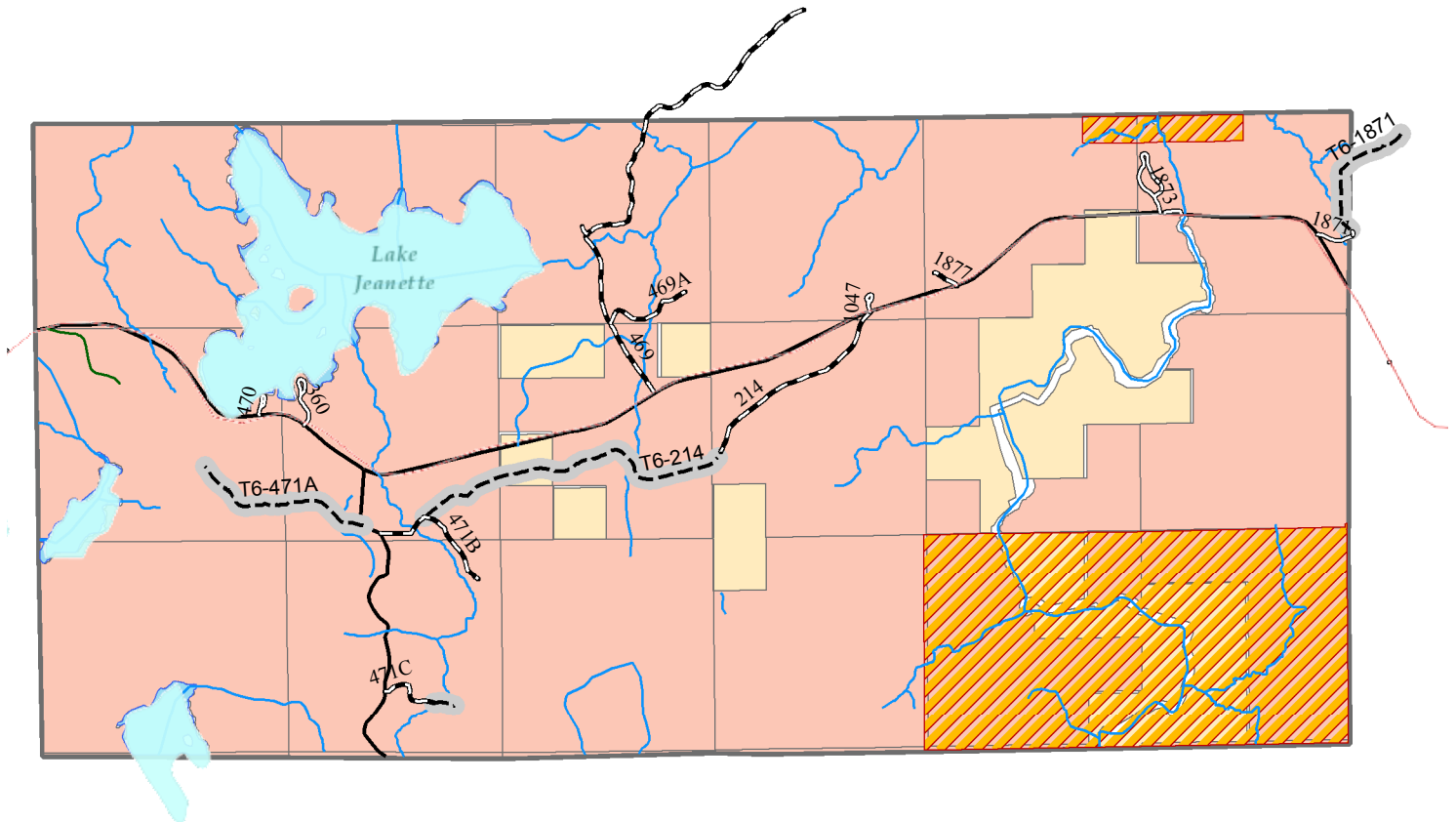


Lake Jeanette State Forest

11,521 Acres

Motor Vehicle Use Classification: Limited/Closed



Sources: Esri, DeLorme, USGS, NPS

Roads and Trails
DNR Roads and Trails
 Minimum Maintenance Road
 System Road
 Designated Nonmotorized Trails
 Snowmobile Trails
 Designated OHV Trails
 Hunter-Walking Trails
 Minnesota State Trails (MS 85.015)
County Roads
 County Roads
USFS Roads and Trails
 Roads Open to All Vehicles, Yearlong

Roads Open to All Vehicles, Seasonal
 Roads Open to Highway Legal Vehicles Only, Yearlong
 Roads Open to Highway Legal Vehicles Only, Seasonal
 Special Designation, Yearlong
 Special Designation, Seasonal
 Trails Open to Vehicles 50' or Less in Width, Yearlong
 Trails Open to Vehicles 50' or Less in Width, Seasonal
 Special Designation, Yearlong
 Special Designation, Seasonal
Water Features
 Rivers and Streams
 Lakes

Other Features
 Boundary Waters Canoe Area Wilderness
 Ruffed Grouse Management Areas
 Areas with Limitations
 Scientific and Natural Areas
 DNR Gravel Pits
Land Ownership
 Lake County
 St. Louis County
 US Government
 DNR-Owned Land
 State Forest Boundaries



0.1 0.3 0.6 0.9 1.2
 Miles

