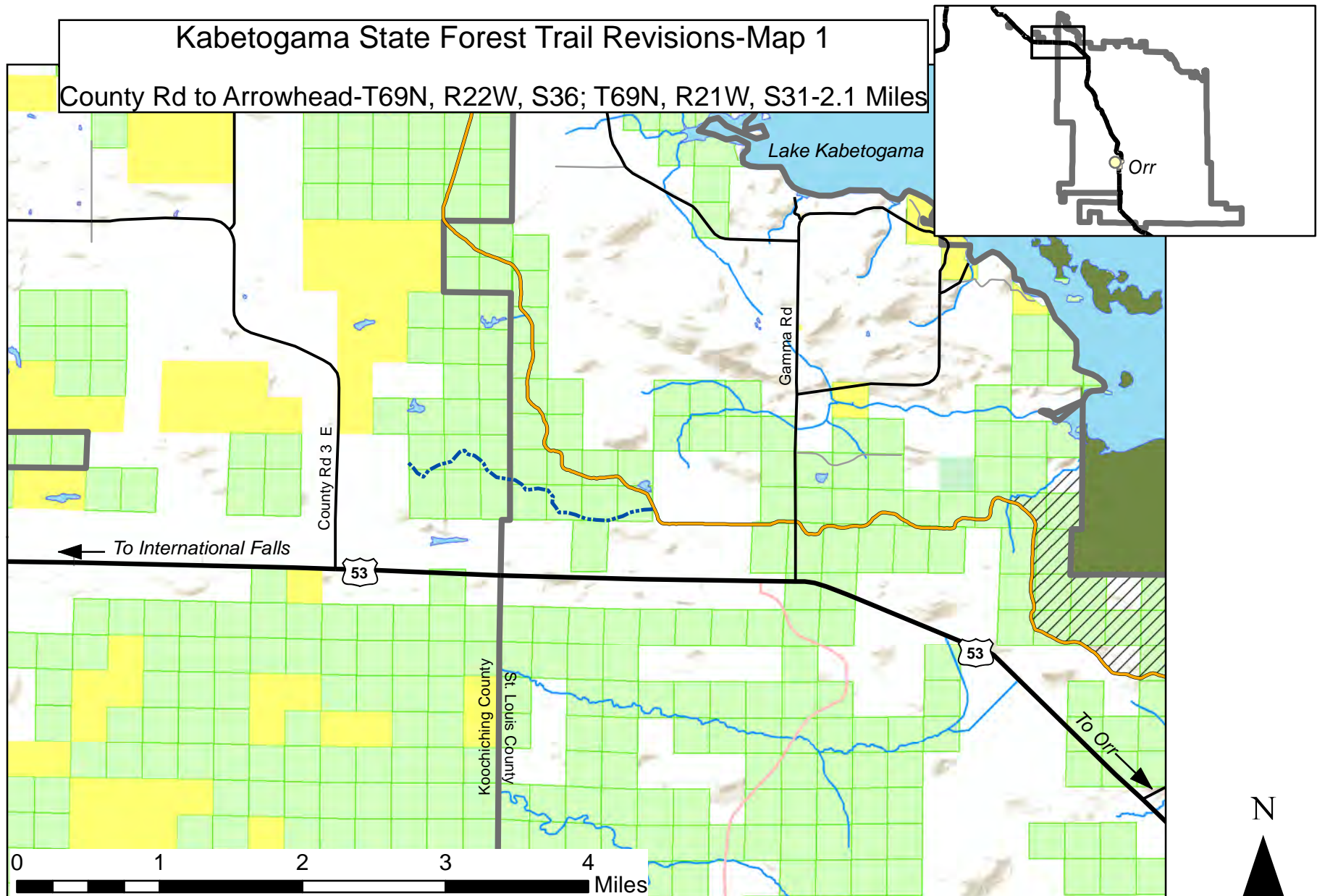


Kabetogama State Forest Trail Revisions-Map 1

County Rd to Arrowhead-T69N, R22W, S36; T69N, R21W, S31-2.1 Miles



Legend

Possible trail connections

- Motorized
- Non-motorized

Current Trails

- Minnesota State Trails
- Hunter Walking Trails
- USFS Trails Open to Vehicles 50' or Less, Yearlong
- USFS Trails Open to Vehicles 50' or Less, Seasonal

Roads

- DNR System Roads
- DNR Minimum Maintenance Roads
- USFS Roads Open to All Vehicles, Yearlong
- USFS Roads Open to All Vehicles, Seasonal
- USFS Roads Open to Highway Legal Vehicles Only, Yearlong
- USFS Roads Open to Highway Legal Vehicles Only, Seasonal
- U.S. Trunk Highway
- MN Trunk Highway
- County Highway

Land Ownership

- Municipal Road
- Township or Other Road
- DNR Forestry
- County
- US Forest Service
- National Park Service
- Federal, other
- Tribal (not public)

Land Management

- Area with limitations
- Embedded Closure
- Ruffed Grouse Management Area
- Scientific and Natural Area
- State Forest Campgrounds and Day Use Areas
- State forest boundary

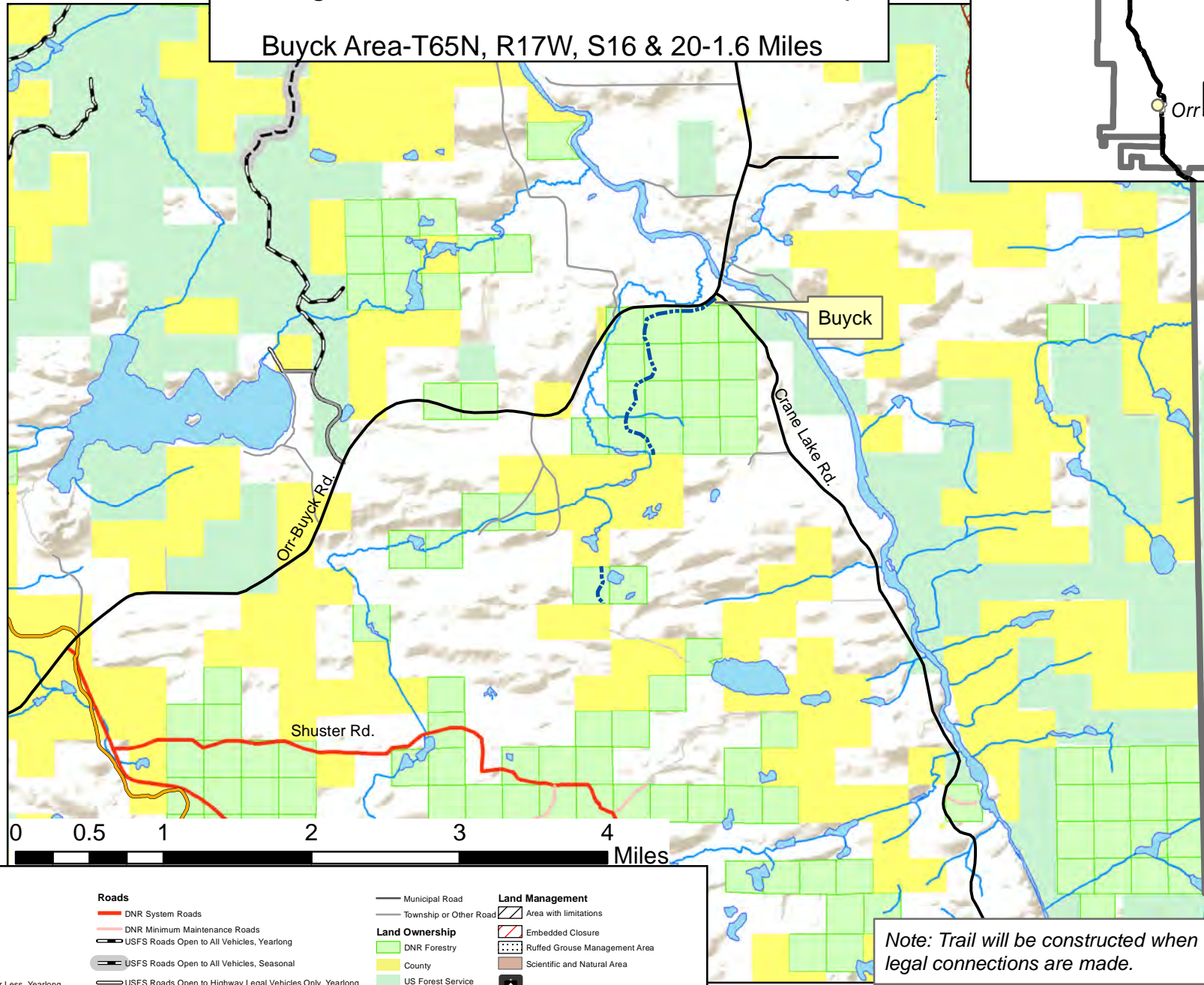
Water Features

- Lake, Pond or Reservoir
- Rivers and Streams

Note: Trail will be constructed when legal connections are made.

Kabetogama State Forest Trail Revisions-Map 2

Buyck Area-T65N, R17W, S16 & 20-1.6 Miles



Note: Trail will be constructed when legal connections are made.

N



Legend

Possible trail connections

- Motorized
- Non-motorized

Current Trails

- Minnesota State Trails
- Hunter Walking Trails
- USFS Trails Open to Vehicles 50' or Less, Yearlong
- USFS Trails Open to Vehicles 50' or Less, Seasonal

Roads

- DNR System Roads
- DNR Minimum Maintenance Roads
- USFS Roads Open to All Vehicles, Yearlong
- USFS Roads Open to All Vehicles, Seasonal
- USFS Roads Open to Highway Legal Vehicles Only, Yearlong
- USFS Roads Open to Highway Legal Vehicles Only, Seasonal
- U.S. Trunk Highway
- MN Trunk Highway
- County Highway

Land Ownership

- Municipal Road
- Township or Other Road
- DNR Forestry
- County
- US Forest Service
- National Park Service
- Federal, other
- Tribal (not public)

Land Management

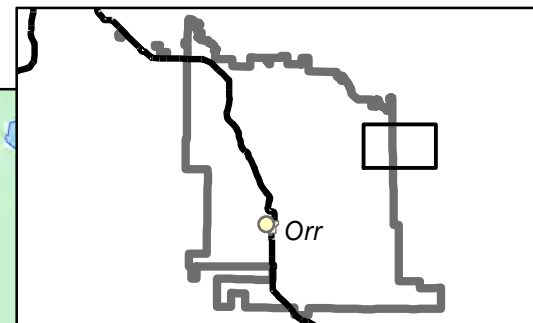
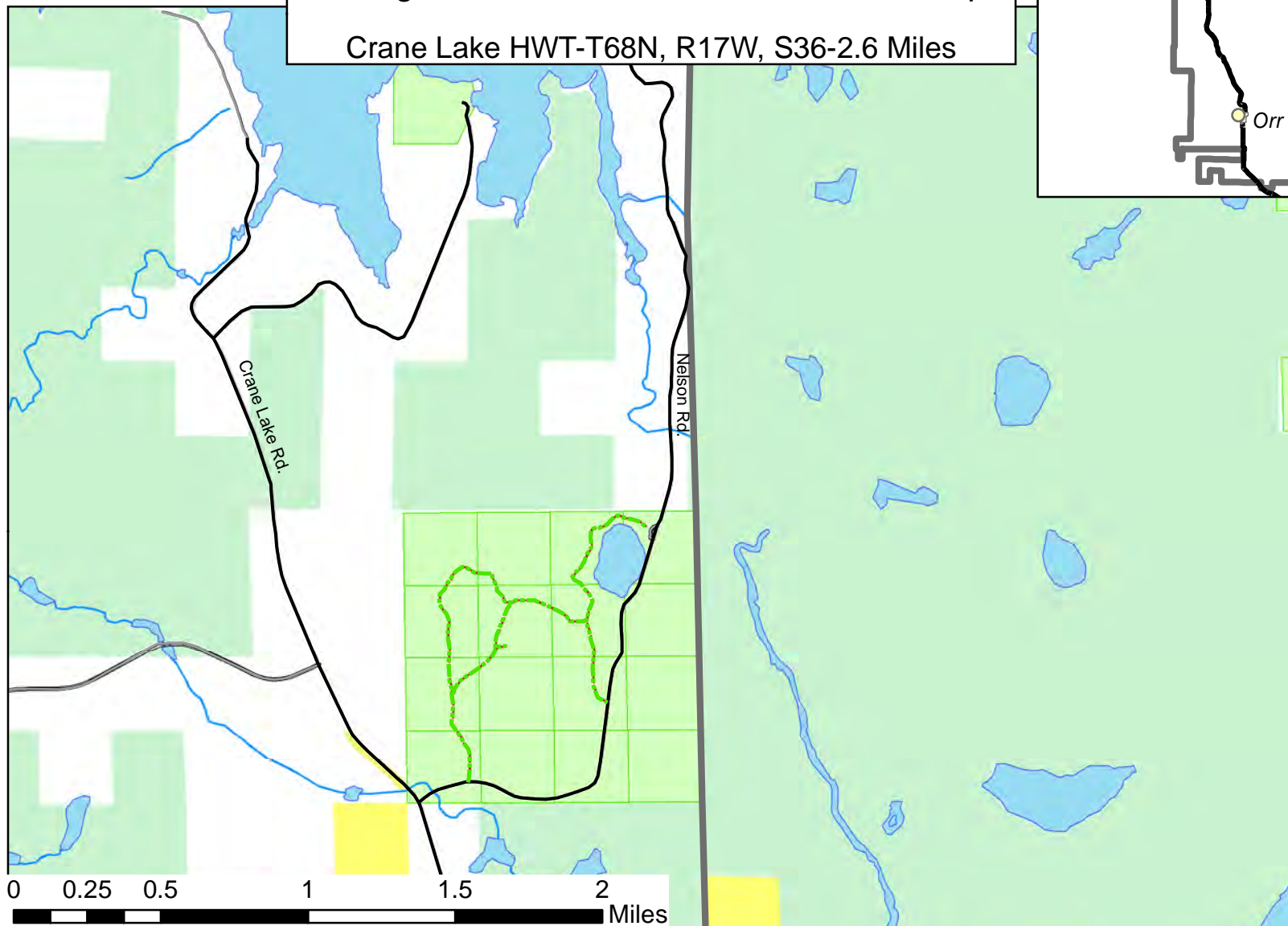
- Area with limitations
- Embedded Closure
- Ruffed Grouse Management Area
- Scientific and Natural Area
- State Forest Campgrounds and Day Use Areas
- State forest boundary

Water Features

- Lake, Pond or Reservoir
- Rivers and Streams

Kabetogama State Forest Trail Revisions-Map 3

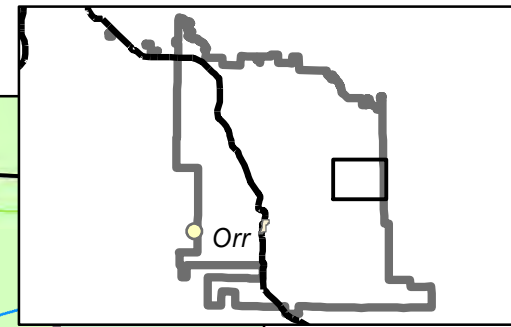
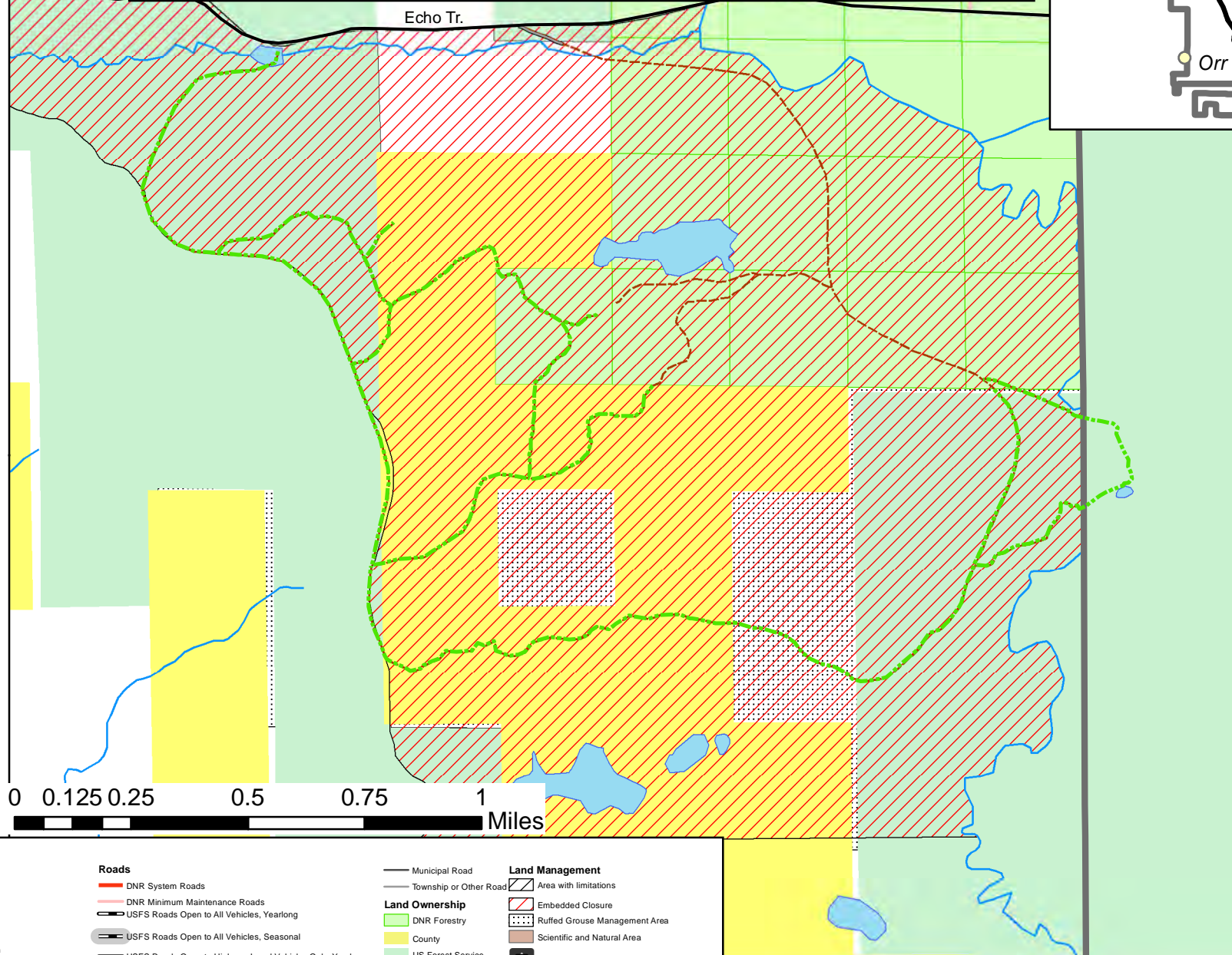
Crane Lake HWT-T68N, R17W, S36-2.6 Miles



Legend			
Possible trail connections			
<ul style="list-style-type: none"> Motorized Non-motorized 			
Current Trails			
<ul style="list-style-type: none"> Minnesota State Trails Hunter Walking Trails USFS Trails Open to Vehicles 50" or Less, Yearlong USFS Trails Open to Vehicles 50" or Less, Seasonal 			
Roads			
<ul style="list-style-type: none"> DNR System Roads DNR Minimum Maintenance Roads USFS Roads Open to All Vehicles, Yearlong USFS Roads Open to All Vehicles, Seasonal USFS Roads Open to Highway Legal Vehicles Only, Yearlong USFS Roads Open to Highway Legal Vehicles Only, Seasonal U.S. Trunk Highway MN Trunk Highway County Highway 			
Land Ownership			
<ul style="list-style-type: none"> Municipal Road Township or Other Road DNR Forestry County US Forest Service National Park Service Federal, other Tribal (not public) 			
Land Management			
<ul style="list-style-type: none"> Area with limitations Embedded Closure Ruffed Grouse Management Area Scientific and Natural Area State Forest Campgrounds and Day Use Areas State forest boundary 			
Water Features			
<ul style="list-style-type: none"> Lake, Pond or Reservoir Rivers and Streams 			

Kabetogama State Forest Trail Revisions-Map 4

Echo HWT-T66N, R17W, S35-36; T65N, R17W, S1&2; T65N, R16W, S6
7.2 Miles



N



Legend

Possible trail connections

- DNR ATV/OHM
- Grant In Aid ATV/OHM
- County ATV/OHM
- USFS ATV/OHM
- HWT-Existing, Proposed Designation

Current Trails

- Minnesota State Trails
- Hunter Walking Trails
- USFS Trails Open to Vehicles 50" or Less in Width, Yearlong
- USFS Trails Open to Vehicles 50" or Less in Width, Seasonal

Roads

- DNR System Roads
- DNR Minimum Maintenance Roads
- USFS Roads Open to All Vehicles, Yearlong
- USFS Roads Open to All Vehicles, Seasonal
- USFS Roads Open to Highway Legal Vehicles Only, Yearlong
- USFS Roads Open to Highway Legal Vehicles Only, Seasonal
- U.S. Trunk Highway
- MN Trunk Highway
- County Highway

Land Ownership

- Municipal Road
- Township or Other Road
- DNR Forestry
- County
- US Forest Service
- National Park Service
- Federal, other
- Tribal (not public)

Land Management

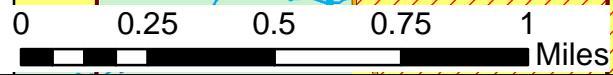
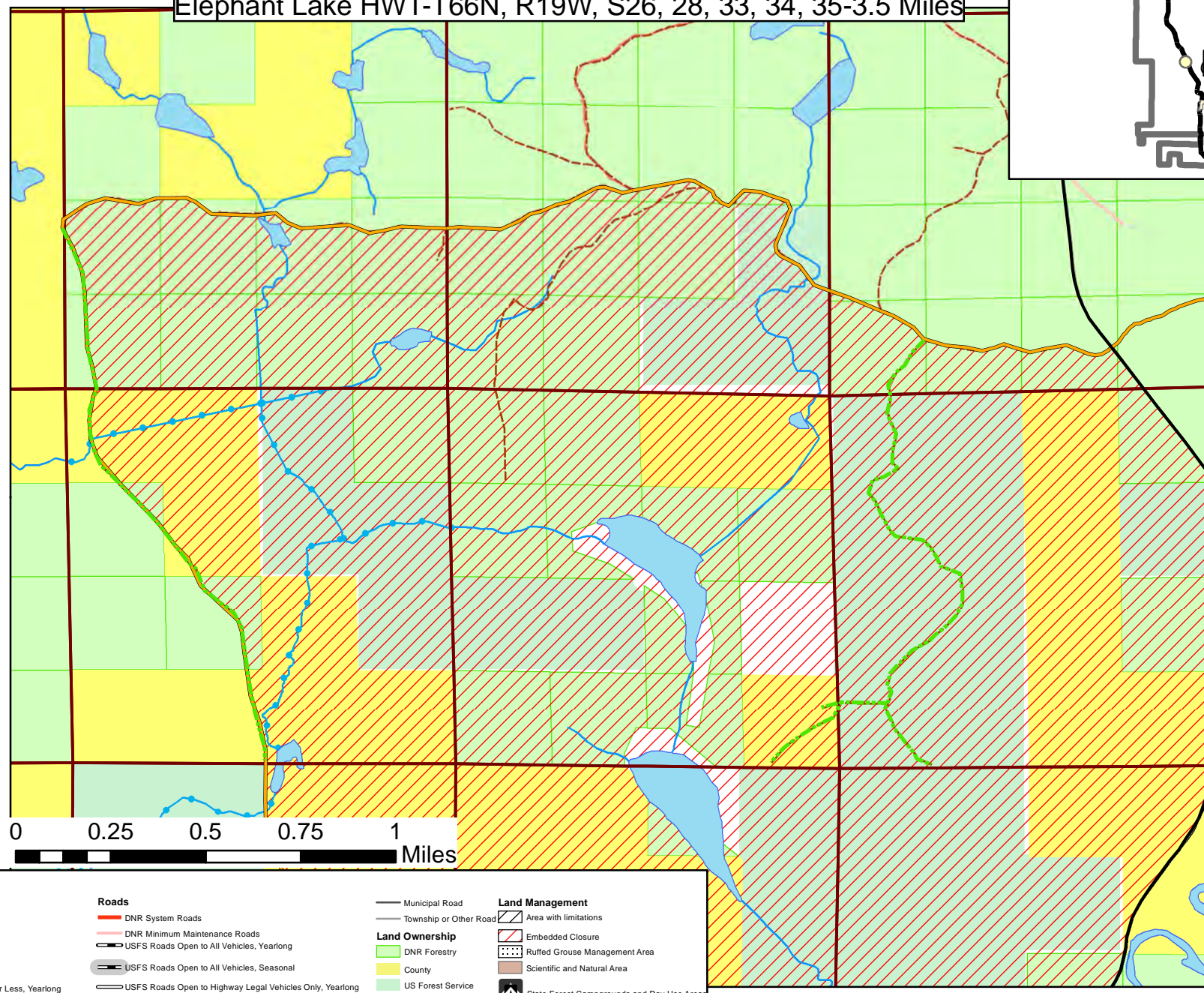
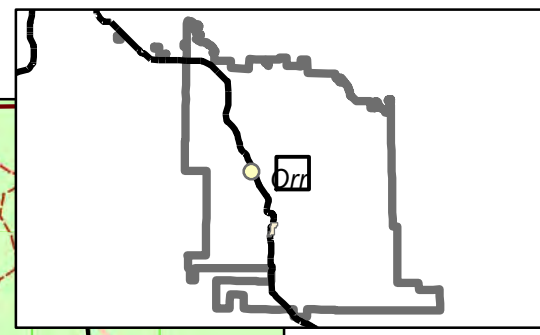
- Area with limitations
- Embedded Closure
- Ruffed Grouse Management Area
- Scientific and Natural Area
- State Forest Campgrounds and Day Use Areas
- State forest boundary

Water Features

- Lake, Pond or Reservoir
- Rivers and Streams
- Designated Trout Streams

Kabetogama State Forest Trail Revisions-Map 5

Elephant Lake HWT-T66N, R19W, S26, 28, 33, 34, 35-3.5 Miles



Legend

Possible trail connections

- Motorized
- Non-motorized

Current Trails

- Minnesota State Trails
- Hunter Walking Trails
- USFS Trails Open to Vehicles 50" or Less, Yearlong
- USFS Trails Open to Vehicles 50" or Less, Seasonal

Roads

- DNR System Roads
- DNR Minimum Maintenance Roads
- USFS Roads Open to All Vehicles, Yearlong
- USFS Roads Open to All Vehicles, Seasonal
- USFS Roads Open to Highway Legal Vehicles Only, Yearlong
- USFS Roads Open to Highway Legal Vehicles Only, Seasonal
- U.S. Trunk Highway
- MN Trunk Highway
- County Highway

Land Ownership

- Municipal Road
- Township or Other Road
- DNR Forestry
- County
- US Forest Service
- National Park Service
- Federal, other
- Tribal (not public)

Land Management

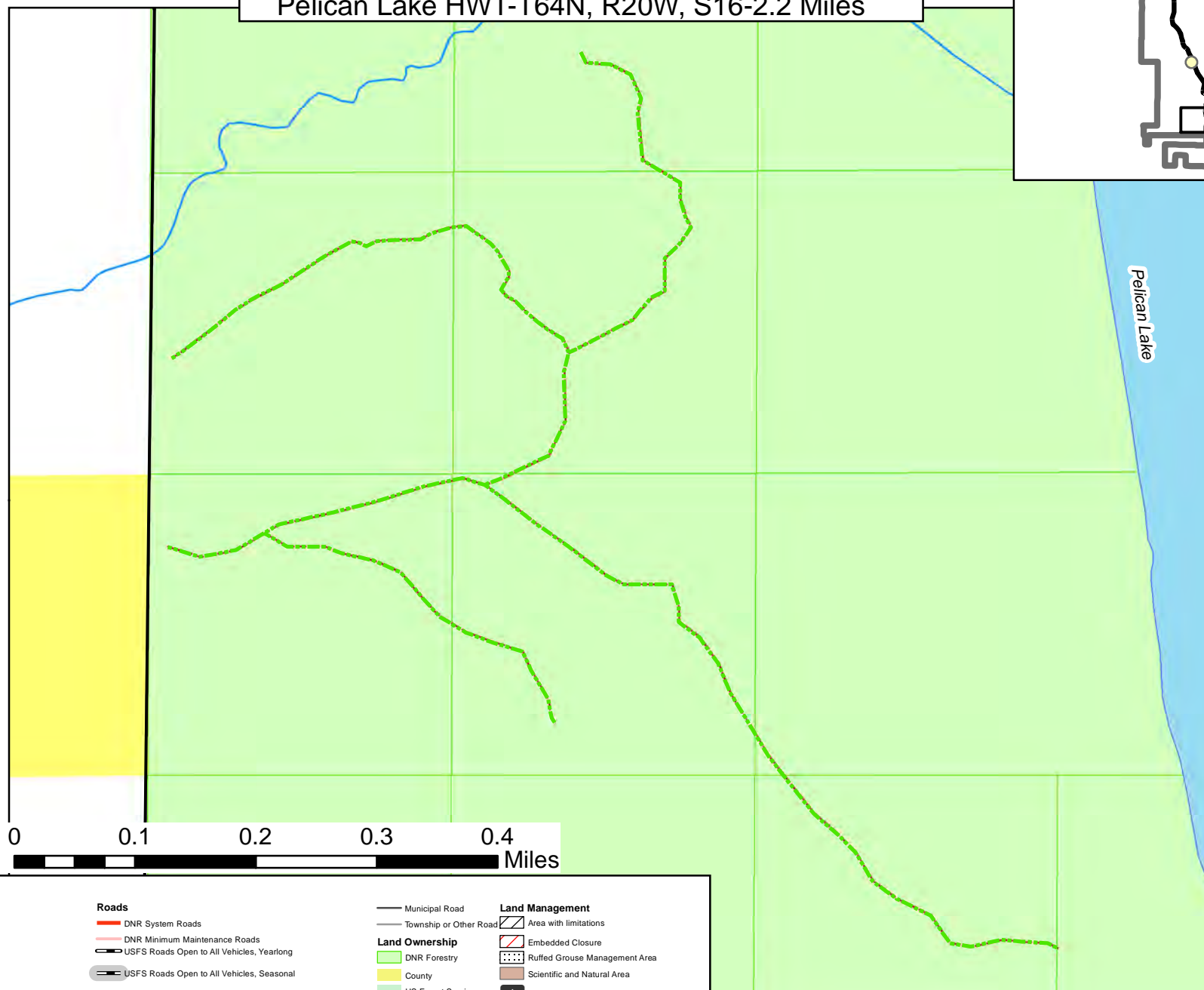
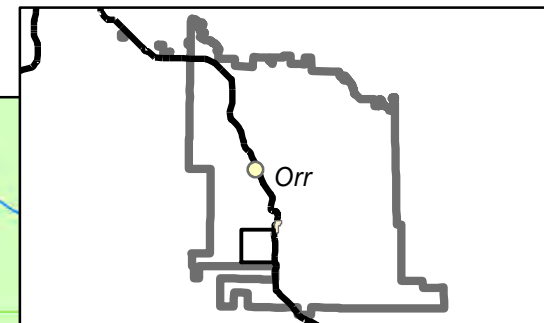
- Area with limitations
- Embedded Closure
- Ruffed Grouse Management Area
- Scientific and Natural Area
- State Forest Campgrounds and Day Use Areas
- State forest boundary

Water Features

- Lake, Pond or Reservoir
- Rivers and Streams

Kabetogama State Forest Trail Revisions-Map 6

Pelican Lake HWT-T64N, R20W, S16-2.2 Miles



Pelican Lake

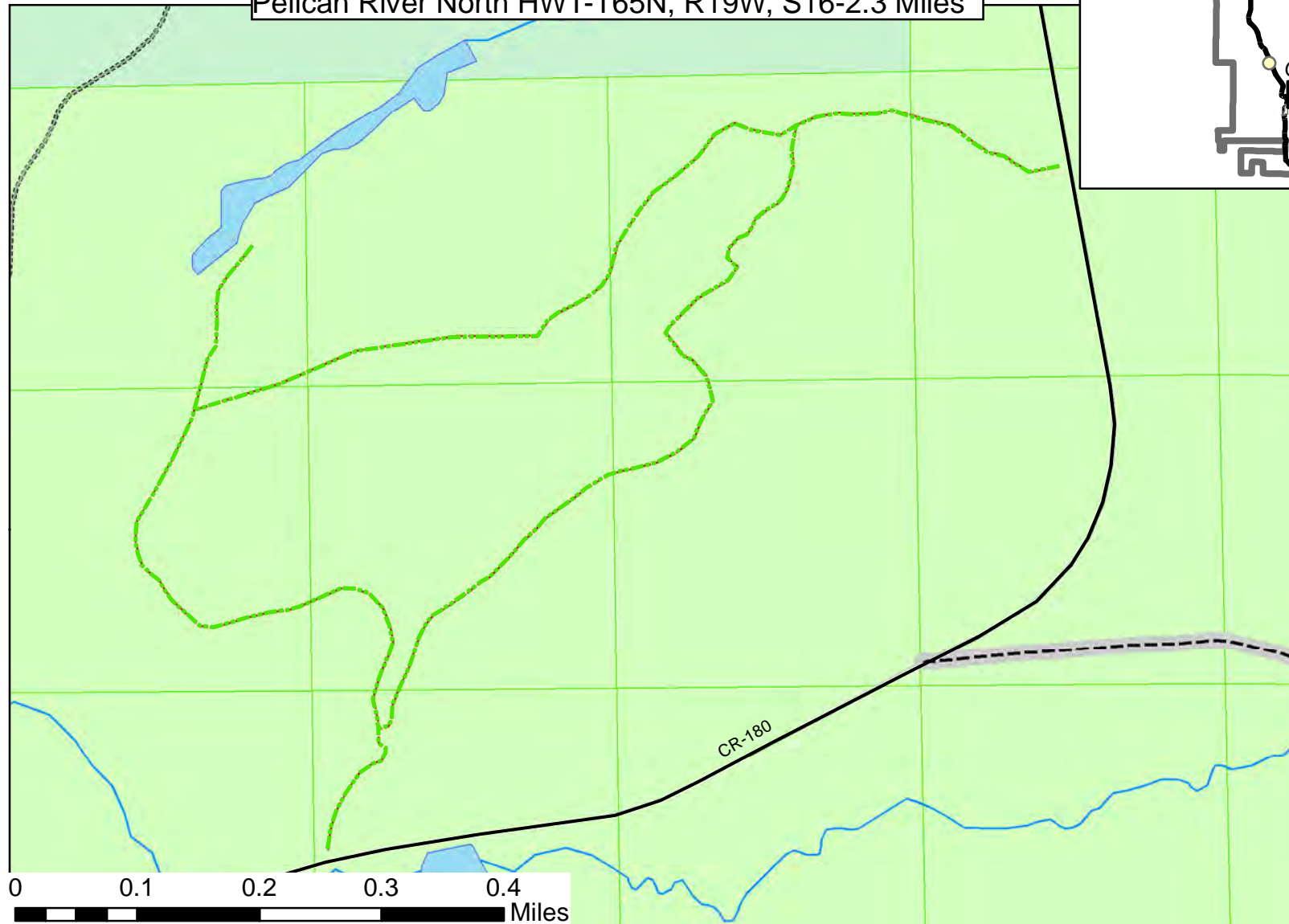
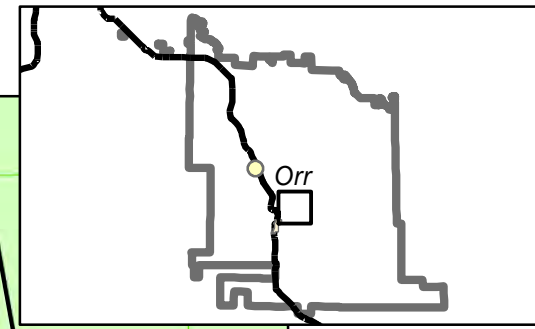
N



Legend			
Possible trail connections			
<ul style="list-style-type: none"> Motorized Non-motorized 			
Current Trails			
<ul style="list-style-type: none"> Minnesota State Trails Hunter Walking Trails USFS Trails Open to Vehicles 50" or Less, Yearlong USFS Trails Open to Vehicles 50" or Less, Seasonal 			
Roads			
<ul style="list-style-type: none"> DNR System Roads DNR Minimum Maintenance Roads USFS Roads Open to All Vehicles, Yearlong USFS Roads Open to All Vehicles, Seasonal USFS Roads Open to Highway Legal Vehicles Only, Yearlong USFS Roads Open to Highway Legal Vehicles Only, Seasonal U.S. Trunk Highway MN Trunk Highway County Highway 			
Land Ownership			
<ul style="list-style-type: none"> Municipal Road Township or Other Road DNR Forestry County US Forest Service National Park Service Federal, other Tribal (not public) 			
Land Management			
<ul style="list-style-type: none"> Area with limitations Embedded Closure Ruffed Grouse Management Area Scientific and Natural Area State Forest Campgrounds and Day Use Areas State forest boundary 			
Water Features			
<ul style="list-style-type: none"> Lake, Pond or Reservoir Rivers and Streams 			

Kabetogama State Forest Trail Revisions-Map 7

Pelican River North HWT-T65N, R19W, S16-2.3 Miles

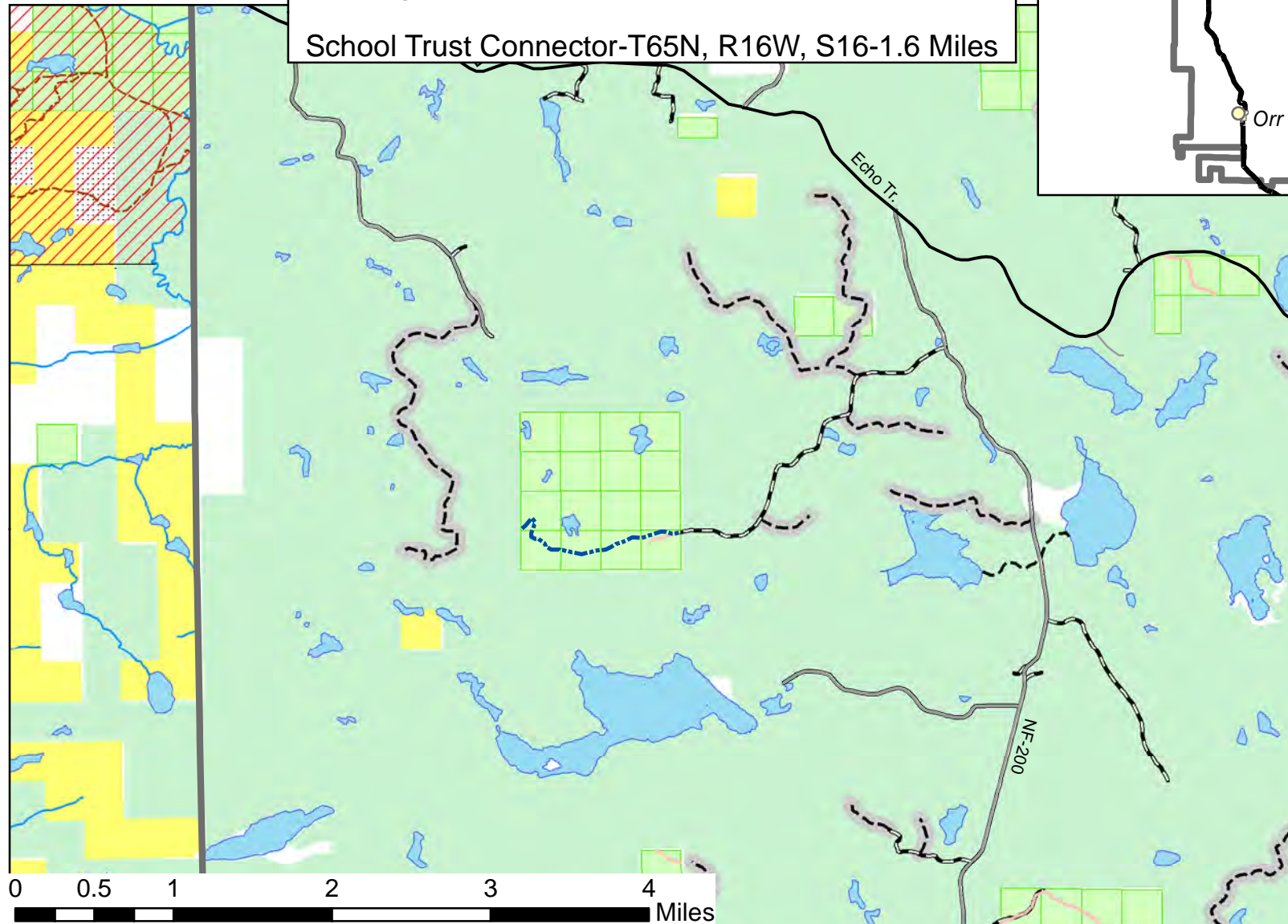
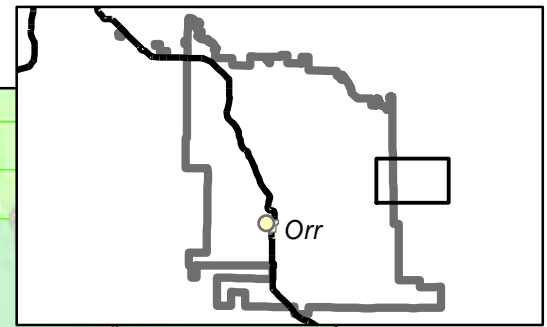


Legend			
Possible trail connections			
<ul style="list-style-type: none"> Motorized Non-motorized 			
Current Trails			
<ul style="list-style-type: none"> Minnesota State Trails Hunter Walking Trails USFS Trails Open to Vehicles 50" or Less, Yearlong USFS Trails Open to Vehicles 50" or Less, Seasonal 			
Roads		Land Ownership	
<ul style="list-style-type: none"> DNR System Roads DNR Minimum Maintenance Roads USFS Roads Open to All Vehicles, Yearlong USFS Roads Open to All Vehicles, Seasonal USFS Roads Open to Highway Legal Vehicles Only, Yearlong USFS Roads Open to Highway Legal Vehicles Only, Seasonal U.S. Trunk Highway MN Trunk Highway County Highway 		<ul style="list-style-type: none"> Municipal Road Township or Other Road DNR Forestry County US Forest Service National Park Service Federal, other Tribal (not public) 	
		Land Management	
		<ul style="list-style-type: none"> Area with limitations Embedded Closure Ruffed Grouse Management Area Scientific and Natural Area State Forest Campgrounds and Day Use Areas State forest boundary 	
		Water Features	
		<ul style="list-style-type: none"> Lake, Pond or Reservoir Rivers and Streams 	



Kabetogama State Forest Trail Revisions-Map 8

School Trust Connector-T65N, R16W, S16-1.6 Miles



Note: Trail will be constructed when legal connections are made.



Legend			
Possible trail connections			
Motorized			
Non-motorized			
Current Trails			
Minnesota State Trails			
Hunter Walking Trails			
USFS Trails Open to Vehicles 50" or Less, Yearlong			
USFS Trails Open to Vehicles 50" or Less, Seasonal			
Roads			
DNR System Roads			
DNR Minimum Maintenance Roads			
USFS Roads Open to All Vehicles, Yearlong			
USFS Roads Open to All Vehicles, Seasonal			
USFS Roads Open to Highway Legal Vehicles Only, Yearlong			
USFS Roads Open to Highway Legal Vehicles Only, Seasonal			
U.S. Trunk Highway			
MN Trunk Highway			
County Highway			
Land Ownership			
Municipal Road			
Township or Other Road			
DNR Forestry			
County			
US Forest Service			
National Park Service			
Federal, other			
Tribal (not public)			
Land Management			
Area with limitations			
Embedded Closure			
Ruffed Grouse Management Area			
Scientific and Natural Area			
State Forest Campgrounds and Day Use Areas			
State forest boundary			
Water Features			
Lake, Pond or Reservoir			
Rivers and Streams			