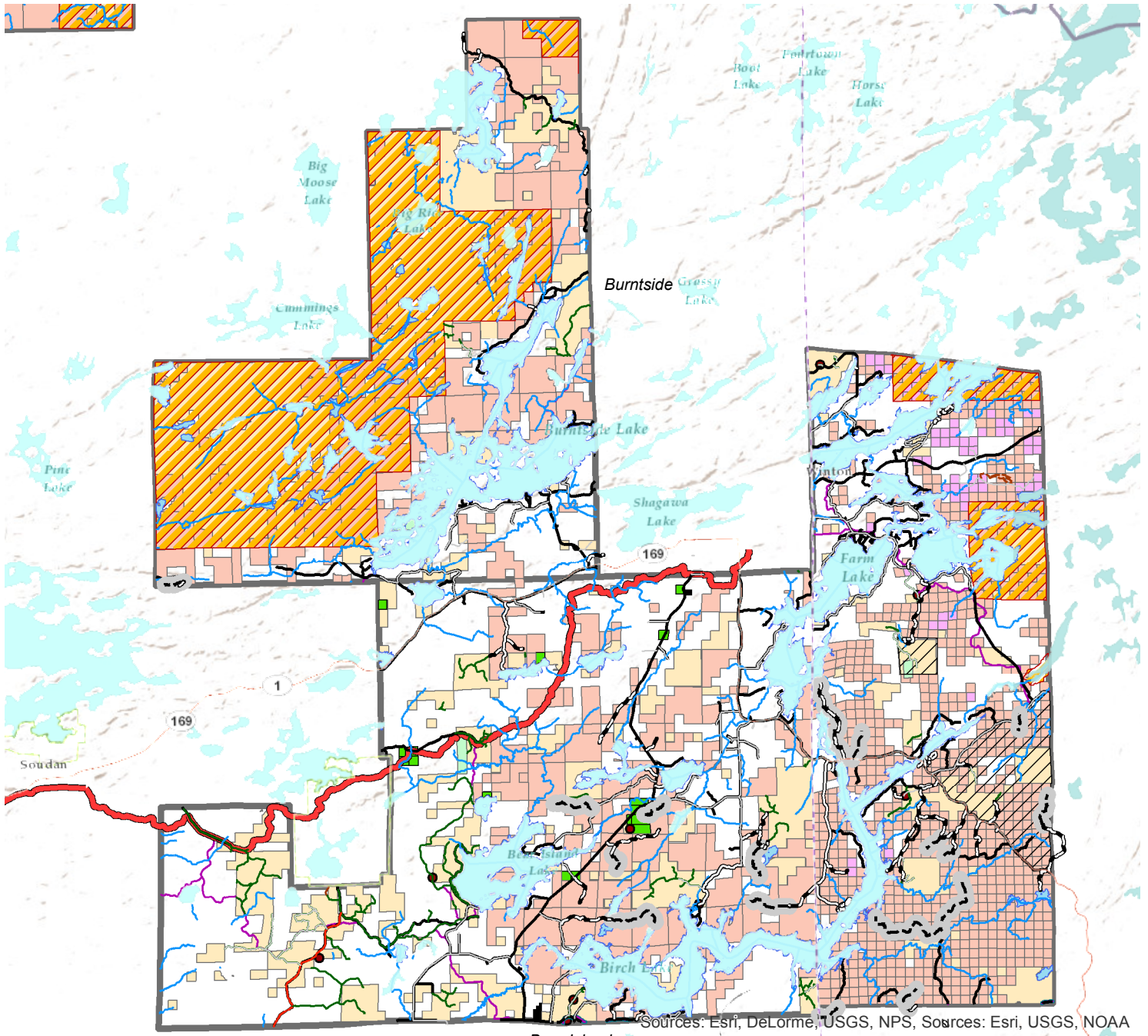


Bear Island and Burntside State Forests

232,629 Acres

Motor Vehicle Use Classification: Limited/Closed



Sources: Esri, DeLorme, USGS, NPS, Sources: Esri, USGS, NOAA

Bear Island

- | | | |
|---|---|--|
| <p>Roads and Trails</p> <p>DNR Roads and Trails</p> <ul style="list-style-type: none"> Minimum Maintenance Road System Road Designated Nonmotorized Trails Snowmobile Trails Designated OHV Trails Hunter-Walking Trails Minnesota State Trails (MS 85.015) <p>County Roads</p> <ul style="list-style-type: none"> County Roads <p>USFS Roads and Trails</p> <ul style="list-style-type: none"> Roads Open to All Vehicles, Yearlong | <ul style="list-style-type: none"> Roads Open to All Vehicles, Seasonal Roads Open to Highway Legal Vehicles Only, Yearlong Roads Open to Highway Legal Vehicles Only, Seasonal Special Designation, Yearlong Special Designation, Seasonal Trails Open to Vehicles 50' or Less in Width, Yearlong Trails Open to Vehicles 50' or Less in Width, Seasonal Special Designation, Yearlong Special Designation, Seasonal <p>Water Features</p> <ul style="list-style-type: none"> Rivers and Streams Lakes | <p>Other Features</p> <ul style="list-style-type: none"> Boundary Waters Canoe Area Wilderness Ruffed Grouse Management Areas Areas with Limitations Scientific and Natural Areas DNR Gravel Pits <p>Land Ownership</p> <ul style="list-style-type: none"> Lake County St. Louis County US Government DNR-Owned Land State Forest Boundaries |
|---|---|--|

