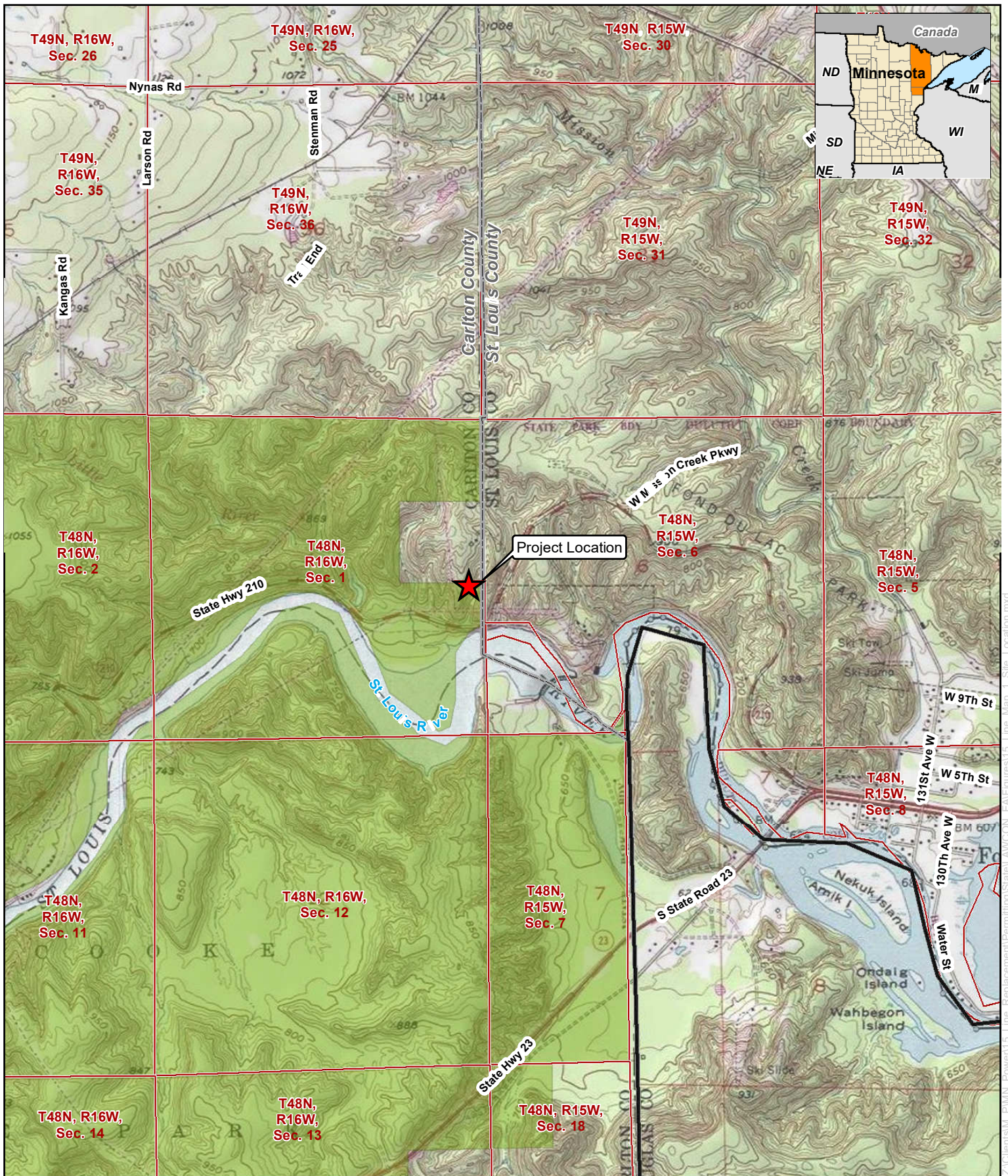


## **Appendix A: Maps**

- Map 1: Project Location - USGS Topographical Map
- Map 2: Project Route Corridor - Aerial Photo-based Map
- Map 3: Project Alternatives
- Map 4: Environmental Features Map
- Map 5: FEMA-Designated Floodplains



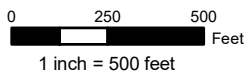
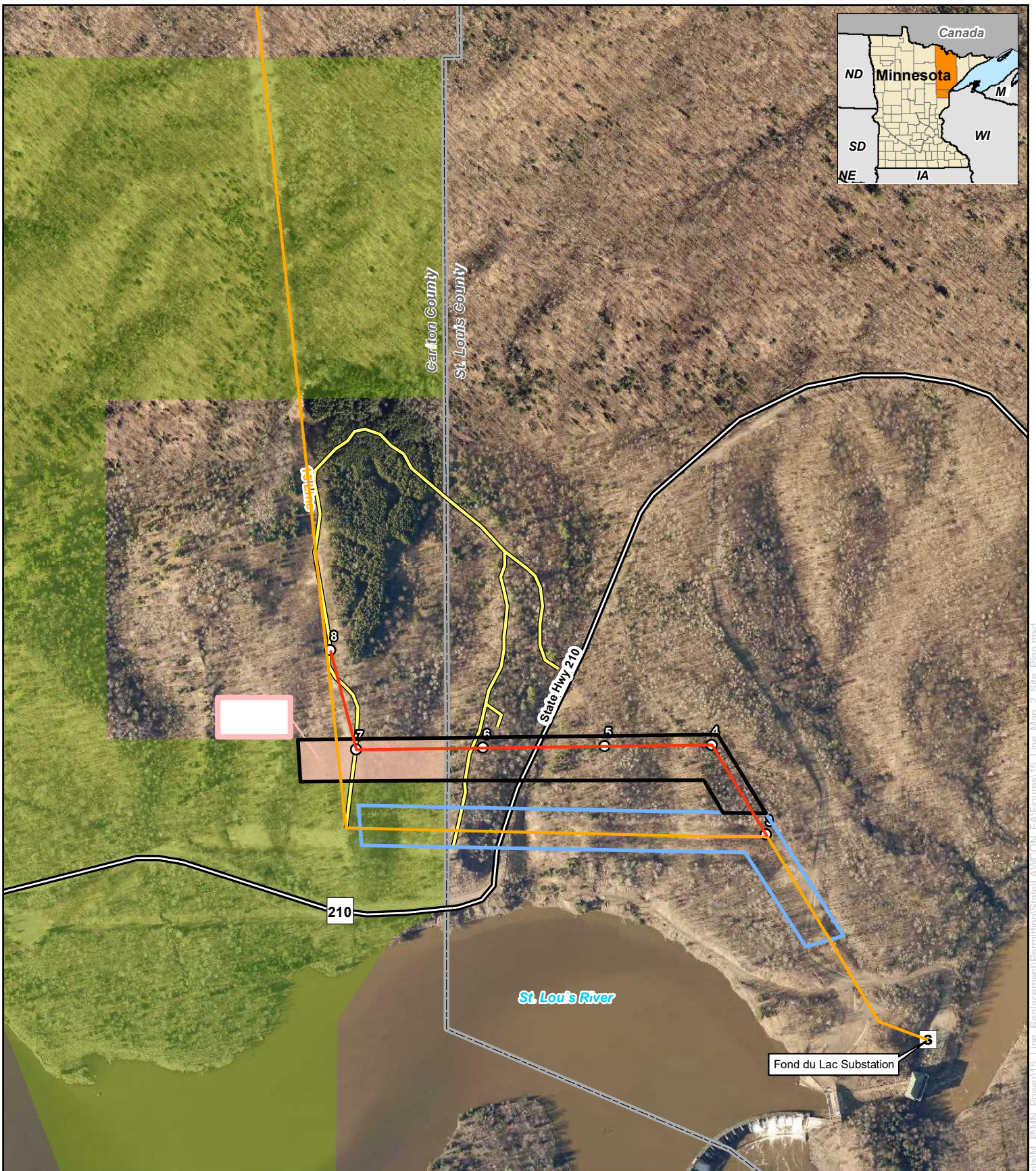
0 1,000 2,000 Feet  
1 inch = 2,000 feet

**minnesota power**  
AN ALLETE COMPANY

For Environmental Review Purposes Only

**Map 1 - Project Location**  
**USGS Topographical Map**  
**ALLETE - Minnesota Power**  
**15 Line Reroute Project**  
**Carlton and St. Louis Counties, Minnesota**

- State Boundary
- County Boundary
- Section Boundary
- Jay Cooke State Park Boundary (Fee Owned)

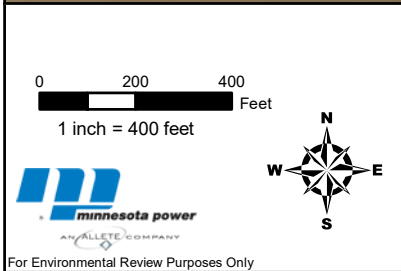
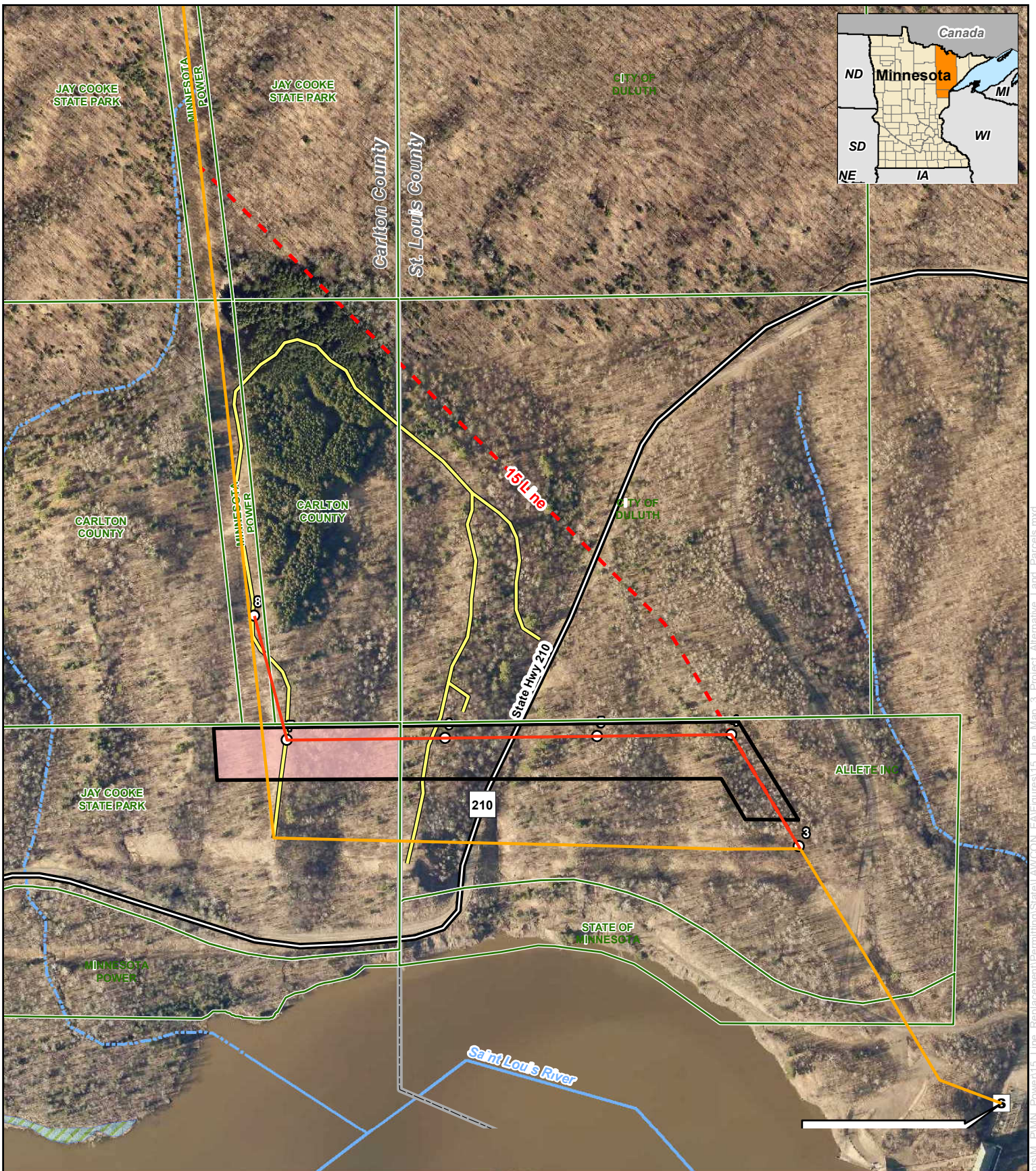


For Environmental Review Purposes Only

**Map 2 - Site Plan**  
**ALLETE - Minnesota Power**  
**15 Line Reroute Project**  
**Carlton and St. Louis Counties, Minnesota**

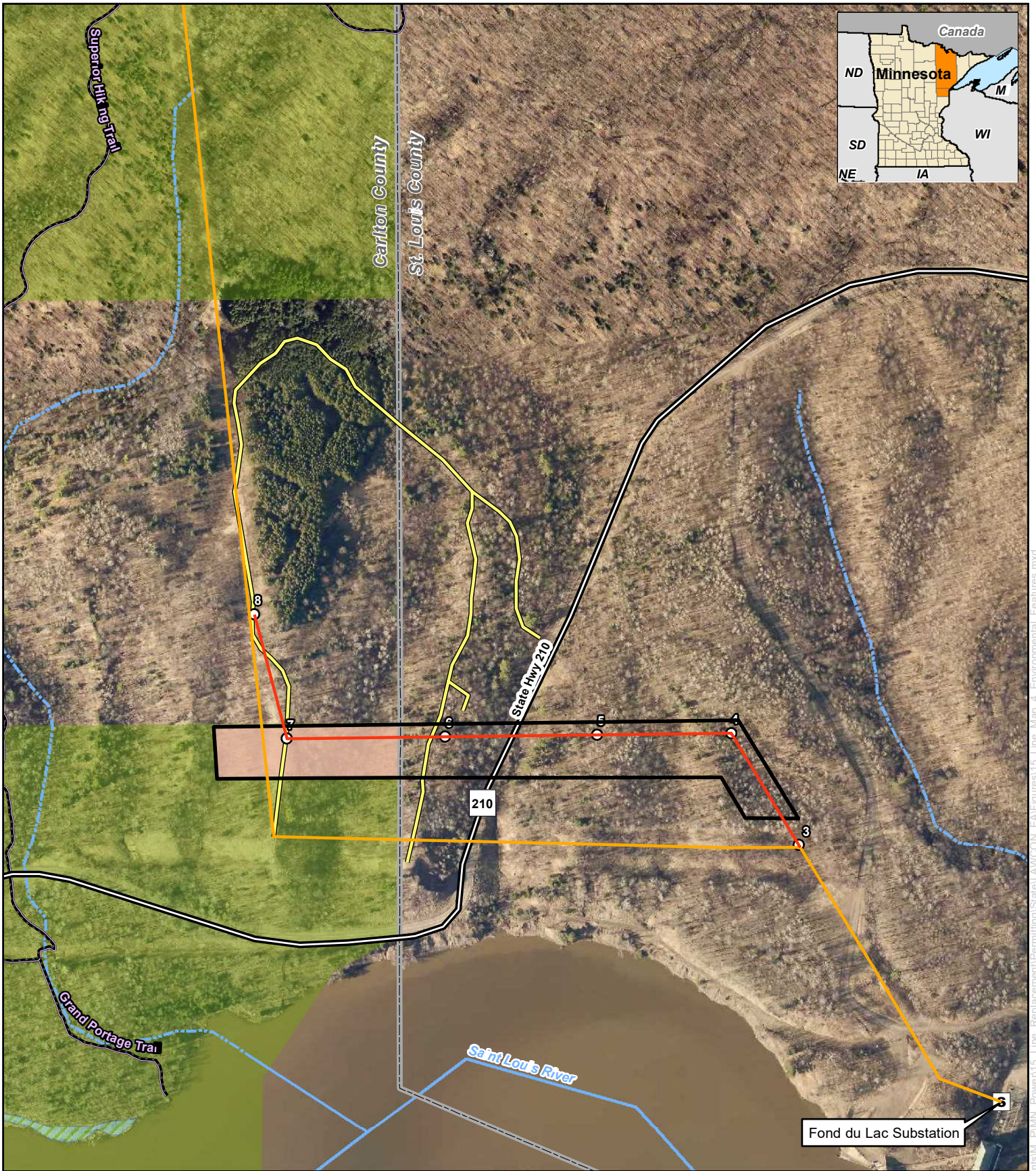
- |                                     |                                                                     |
|-------------------------------------|---------------------------------------------------------------------|
| Proposed Reroute Structure Location | Proposed Transmission Line Right-of-Way within Jay Cooke State Park |
| Proposed Reroute Transmission Line  | Existing Transmission Line Right-of-Way                             |
| Existing Transmission Line          | County Boundary                                                     |
| Access Road                         | Jay Cooke State Park Boundary (Fee Owned)                           |
| State Highway                       | Proposed Transmission Reroute Right-of-Way                          |

Date: (7/10/2018) Source: Z:\Users\MJ\_P\MIN\_Power\15\_Line\_Replacement\Permitting\State\LA\CON\_EX\Figures\15\_Line\_Map\_2\_Site\_Plan.mxd



**Map 3 - Project Alternatives and Land Parcels**  
**ALLETE - Minnesota Power**  
**15 Line Reroute Project**  
**Carlton and St. Louis Counties, Minnesota**

Alternative A		Alternative B - Reroute Transmission Line Option	
○	Proposed Reroute Structure Location	—	Existing Transmission Line
—	Proposed Reroute Transmission Line	—	State Highway
—	Access Road	—	County Boundary
—	Proposed Transmission Reroute Right-of-Way	—	Parcel Boundary
—	Proposed Transmission Line Right-of-Way within Jay Cooke State Park	—	Intermittent Stream
		—	Perennial Stream
		—	NWI Wetland (MNDNR Updated)



0 200 400  
Feet  
1 inch = 400 feet

For Environmental Review Purposes Only

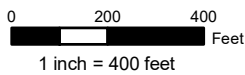
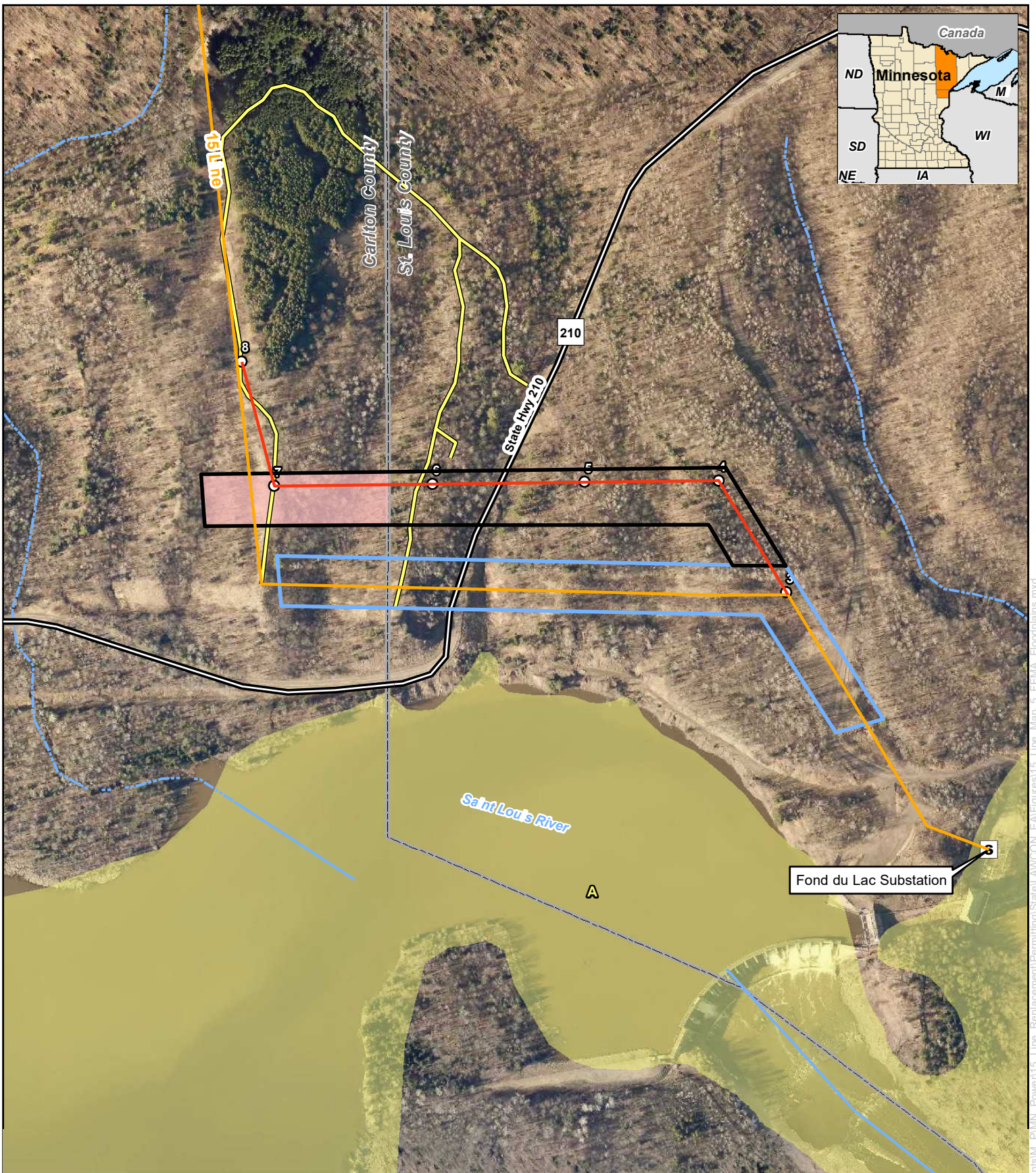
### Map 4 - Environmental Features and Recreation Map

#### ALLETE - Minnesota Power

#### 15 Line Reroute Project













#### Carlton and St. Louis Counties, Minnesota

- Proposed Structure Location
- Proposed Transmission Line Reroute
- Existing Transmission Line
- Access Road
- State Highway
- State Park Trail
- Proposed Transmission Line Right-of-Way
- Proposed Transmission Line Right-of-Way within Jay Cooke State Park
- County Boundary
- Intermittent Stream
- Perennial Stream
- Field Delineated Wetland
- NWI Wetland (MNDNR Updated)



For Environmental Review Purposes Only

**Map 5 - FEMA Designated Floodplains**  
**ALLETE - Minnesota Power**  
**15 Line Reroute Project**  
**Carlton and St. Louis Counties, Minnesota**

-  Proposed Reroute Structure Location
-  Proposed Reroute Transmission Line
-  Existing Transmission Line
-  Access Road
-  State Highway
-  Intermittent Stream
-  Perennial Stream
-  Proposed Transmission Reroute Right-of-Way
-  Proposed Transmission Line Right-of-Way within Jay Cooke State Park
-  Existing Transmission Line Right-of-Way
-  County Boundary
- FEMA Floodzone**
-  Zone A (100 - Year Floodplain)

Date: (7/10/2018) Source: Z:\Clients\11\_P\11\_Min\_Power\15\_Line\_Replacement\Permitting\State\LAYCON\_E\Allfigures\15\_Line\_Map\_5\_FEMA\_Floodplains.mxd