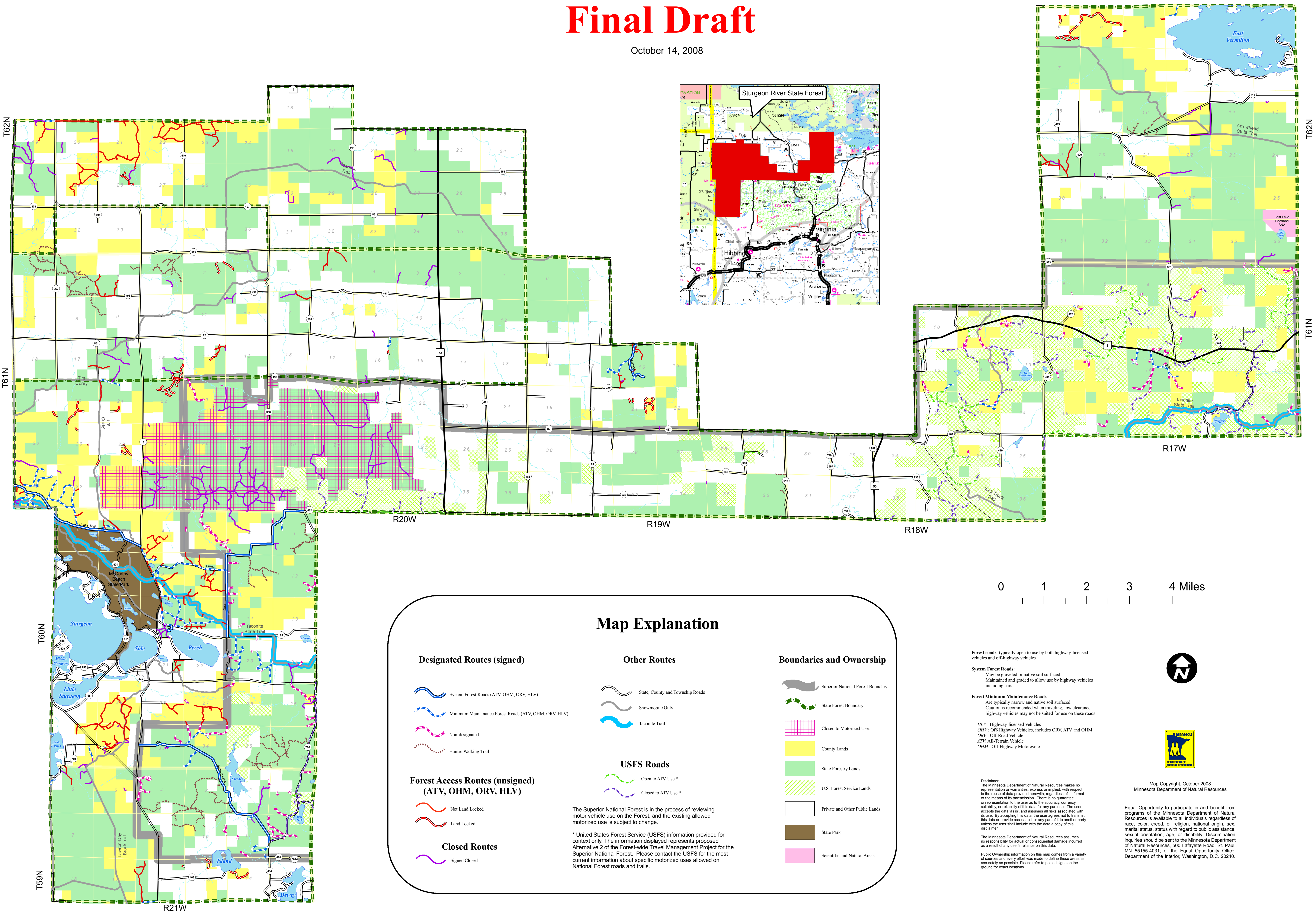


# Sturgeon River State Forest

## Forest Road and Trail Designation Plan

### Final Draft

October 14, 2008



**Forest roads:** typically open to use by both highway-licensed vehicles and off-highway vehicles

**System Forest Roads:**  
May be gravelled or native soil surfaced  
Maintained and graded to allow use by highway vehicles including cars

**Forest Minimum Maintenance Roads:**  
Are typically narrow and native soil surfaced  
Caution is recommended when traveling, low clearance highway vehicles may not be suited for use on these roads

**HLV:** Highway-licensed Vehicles  
**OHV:** Off-Highway Vehicles, includes ORV, ATV and OHM  
**ORV:** Off-Road Vehicle  
**ATV:** All-Terrain Vehicle  
**OHM:** Off-Highway Motorcycle

**Disclaimer:**  
The Minnesota Department of Natural Resources makes no representation or warranties, express or implied, with respect to the reuse of data provided herewith, regardless of its format or the means of its transmission. There is no guarantee or representation to the user as to the accuracy, currency, suitability, or reliability of this data for any purpose. The user accepts the data "as is," and assumes all risks associated with its use. By accepting this data, the user agrees not to transmit this data or provide access to it or any part of it to another party unless the user shall include with the data a copy of this disclaimer.

The Minnesota Department of Natural Resources assumes no responsibility for actual or consequential damage incurred as a result of any user's reliance on this data.

Public Ownership information on this map comes from a variety of sources and every effort was made to define these areas as accurately as possible. Please refer to posted signs on the ground for exact locations.

Map Copyright, October 2008  
Minnesota Department of Natural Resources

Equal Opportunity to participate in and benefit from programs of the Minnesota Department of Natural Resources is available to all individuals regardless of race, color, creed, or religion, national origin, sex, marital status, status with regard to public assistance, sexual orientation, age, or disability. Discrimination inquiries should be sent to the Minnesota Department of Natural Resources, 500 Lafayette Road, St. Paul, MN 55155-4031; or the Equal Opportunity Office, Department of the Interior, Washington, D.C. 20240.