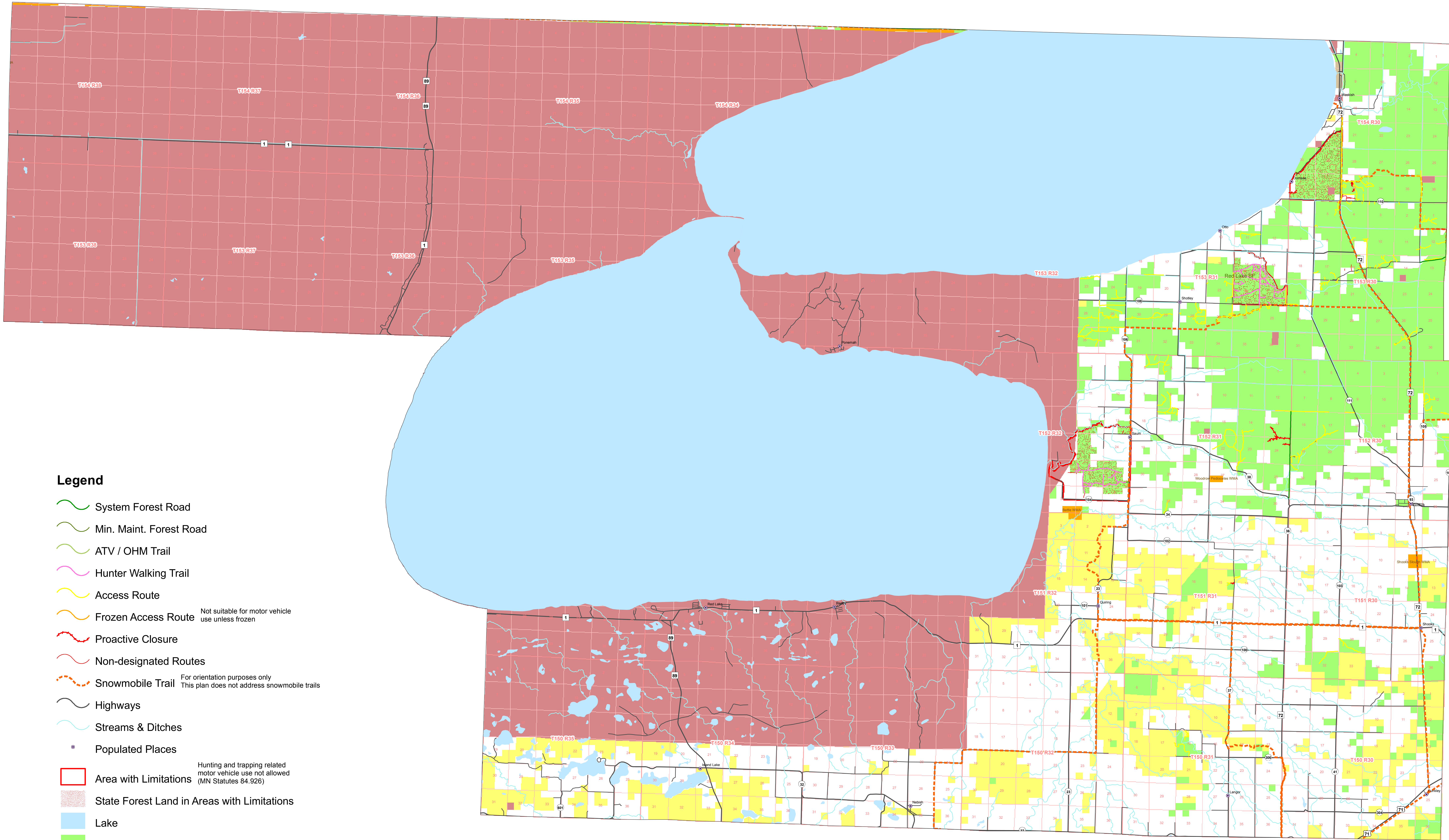
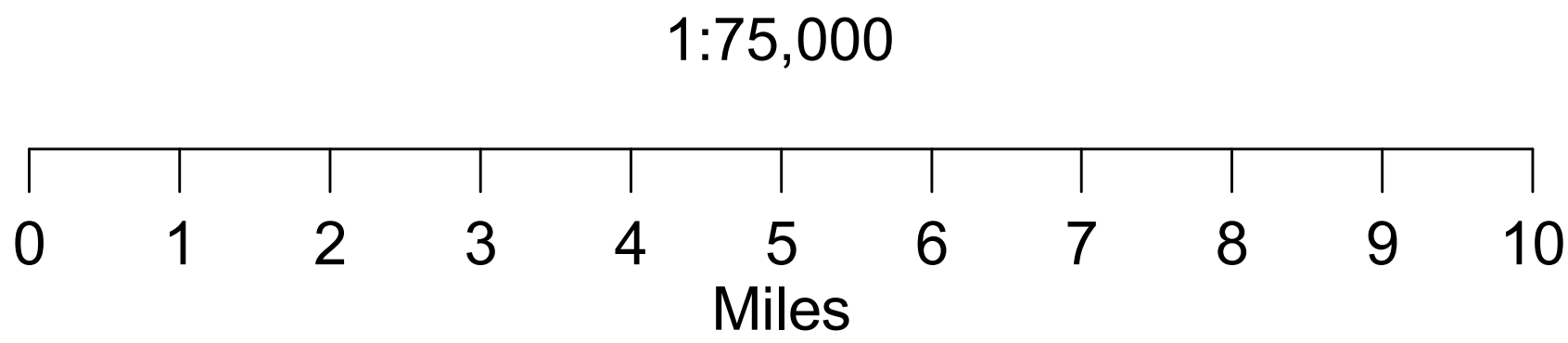


Northern Border State Forest Road & Trail Project
Route Designations
Red Lake State Forest / Central Beltrami County



- Legend**
- System Forest Road
 - Min. Maint. Forest Road
 - ATV / OHM Trail
 - Hunter Walking Trail
 - Access Route
 - Frozen Access Route Not suitable for motor vehicle use unless frozen
 - Proactive Closure
 - Non-designated Routes
 - Snowmobile Trail For orientation purposes only
This plan does not address snowmobile trails
 - Highways
 - Streams & Ditches
 - Populated Places
 - Area with Limitations Hunting and trapping related motor vehicle use not allowed (MN Statutes 84.926)
 - State Forest Land in Areas with Limitations
 - Lake
 - State Forest Land
 - State Wildlife Land
 - State Park Land
 - State Scientific & Natural Area
 - County Tax-forfeited Land
 - Red Lake Band Land See Red Lake Band Disclaimer and Note
 - Township Lines
 - Section Lines



Red Lake Band Disclaimer and Note

Disclaimer:
This data represents current Red Lake Tribal ownership and is subject to change. It is intended for general planning purposes only – data may not be consistent with all surveying and engineering standards. No warranty of accuracy is implied or given.

Note:
Lands belonging to the Red Lake Band of Chippewa Indians are closed to nonband members except by special authorizations of the tribal council. For more information contact the Red Lake Band Department of Natural Resources at (218) 679-3959.

Disclaimer:
The Minnesota Department of Natural Resources makes no representation or warranties, express or implied, with respect to the reuse of data provided herewith, regardless of its format or the means of its transmission. There is no guarantee or representation to the user as to the accuracy, currency, suitability, or reliability of this data for any purpose. The user accepts the data as is, and assumes all risks associated with its use. By accepting this data, the user agrees not to transmit this data or provide access to it or any part of it to another party unless the user shall include with the data a copy of this disclaimer. The Minnesota Department of Natural Resources assumes no responsibility for actual or consequential damage incurred as a result of any user's reliance on this data. Public Ownership information on this map comes from a variety of sources and every effort was made to define these areas as accurately as possible.

Equal Opportunity:
Equal opportunity to participate in and benefit from programs of the Minnesota Department of Natural Resources is available to all individuals regardless of race, color, creed, religion, national origin, sex, marital status, status with regard to public assistance, age, sexual orientation, or disability. Discrimination inquiries should be sent to MN DNR, 500 Lafayette Road, St. Paul, MN 55155-4031, or the Equal Opportunity Office, Department of the Interior, Washington, DC 20240.

Copyright 2008 – Minnesota Department of Natural Resources

Vehicle Descriptions

ATV: All-Terrain Vehicle – motorized flotation-tired vehicles with at least 3 but no more than 6 low pressure tires. Class 1 ATVs have an engine displacement of less than 800 cc and total dry weight of less than 900 pounds. Class 2 ATVs have an engine displacement of less than 800 cc and total dry weight of 900 to 1,500 pounds.

HLV: Highway-Licensed Vehicle – a motorized vehicle that meets the requirements for licensing and use on public highways, including cars, vans, pickups, motorcycles, etc.

OHM: Off-Highway Motorcycle – motorized vehicles traveling on 2 wheels with a seat designed to be straddled and handlebars for steering control. Motorcycles may be legal for highway use and still considered to be OHMs if used on trails or natural terrain.

ORV: Off-Road Vehicle – motorized recreational vehicles (over 1,500 pounds) capable of travel on natural terrain, such as four-wheel-drive trucks. ORV does not include farm, logging, military, emergency, law enforcement, utility, trail grooming, or construction vehicles when used for their intended purposes.

OHV: Off-Highway Vehicle – a generic term that includes ATVs, OHMs, and ORVs.

Route Descriptions

Forest Roads

- + Provide access for resource management activities and public use
- + Are not considered "public highways" and the managing agency is not a "road authority"
- + Are typically open to use by both HLVs and OHVs
- + Are classified as "System" or "Minimum Maintenance" depending on condition and intended use
 - o System Forest Roads
 - May be gravelled or native soil surfaced
 - Maintained and graded to allow use by low clearance HLVs
 - Signed with road name at major intersections
 - o Minimum Maintenance Forest Roads
 - Typically narrow and native soil surfaced
 - Caution is recommended when traveling. Low clearance HLVs may not be suited for use on these roads
 - Will be signed "Road may be impassable. Travel at your own risk."
- + Forest roads may be temporarily closed to motor vehicle use to prevent damage to the road surface. Forest roads on state forest land are typically open to HLVs and OHVs use most of the year. Some forest roads on county and private forest lands have gates that are typically closed to restrict access by HLVs but still allow access by ATVs

Recreational Trails

- + Trails signed, mapped, and maintained for recreational use
- + Various uses may be "primary," "permitted," or "prohibited"
- o ATV and OHM Trails
 - Trails that are signed, mapped, and maintained for use by ATVs and OHMs
 - Use by HLVs and ORVs usually prohibited
- o Hunter Walking Trails
 - Maintained trails primarily for use by hunters on foot
 - Use by motor vehicles and horses prohibited

Non-designated Routes

- + Routes that are neither a forest road nor a recreational trail
- + Width and surface varies and routes may not be suitable for public use
- + Not signed or maintained for public use
- + Available for use in an "as is" condition, with the user responsible for ensuring there is no damage to the route or adjacent resources
- + On state forest lands classified as *managed* or *limited* these routes are available for motor vehicle use under the hunting and trapping exceptions allowed by MN Statutes 84.926
- + Non-designated routes on state forest lands classified as *managed* are referred to as Access Routes and are available for motor vehicle use. It is illegal to operate a motor vehicle on these routes in a manner that causes erosion, rutting, or damage to trees (MN Rules 6100.1950, Subpart 7A). Some Access Routes are only suitable for motor vehicle use when frozen, use under non-frozen conditions will result in rutting. Access Routes that are damaged will be signed as closed to motor vehicle use.

