

Designation of Forest Trails in Huntersville State Forest in Hubbard and Wadena Counties, Minnesota

NOTICE IS HEREBY GIVEN that the Commissioner of Natural Resources orders the designation of forest trails located within the Huntersville State Forest. These designations, pursuant to *Minnesota Statutes*, Section 89.19, Subd. 2, are for specified recreational purposes.

WHEREAS

1. *Minnesota Statutes*, Section 89.19, Subd. 2 authorizes the designation, and changes in designation, of forest trails by written order, specifying public notice and public meeting requirements that must be fulfilled prior to making such designations.
2. *Minnesota Laws 2003*, Chapter 128, Article 1, Section 167, (as amended in 2005 and 2007), and *Minnesota Rules* Chapter 6100.1950, require the Commissioner of Natural Resources to classify all state forest lands with respect to motor vehicle use.
3. The agency published its proposed motor use classification and forest road and trail designations in a draft plan in May 2007. The agency held public meetings and solicited and received written comments and submissions regarding the public's use of forest lands and roads and trails in Huntersville State Forest in Hubbard and Wadena Counties, Minnesota.

4. All public and procedural requirements in *Minnesota Statutes*, and other applicable rules and legal requirements, have been fulfilled.
5. The forest trail designations are both needed and reasonable.

NOW THEREFORE, IT IS ORDERED that the forest trails described below are hereby designated pursuant to authority vested in me by Minnesota law:

1. **All Terrain Vehicle (ATV) / Off-Highway Motorcycle (OHM) Trails** – The approximately 3.6 miles of trail depicted on the map labeled *Exhibit A*, attached hereto and incorporated herein, are designated as ATV/OHM Trails.
2. **Off-Highway Motorcycle (OHM) Trails** – The approximately 50.7 miles of trail depicted on the map labeled *Exhibit B*, attached hereto and incorporated herein, are designated OHM Trails.
3. **Horseback Trails** – The approximately 17.9 miles of trail depicted on the map labeled *Exhibit C*, attached hereto and incorporated herein, are designated Horseback Trails.

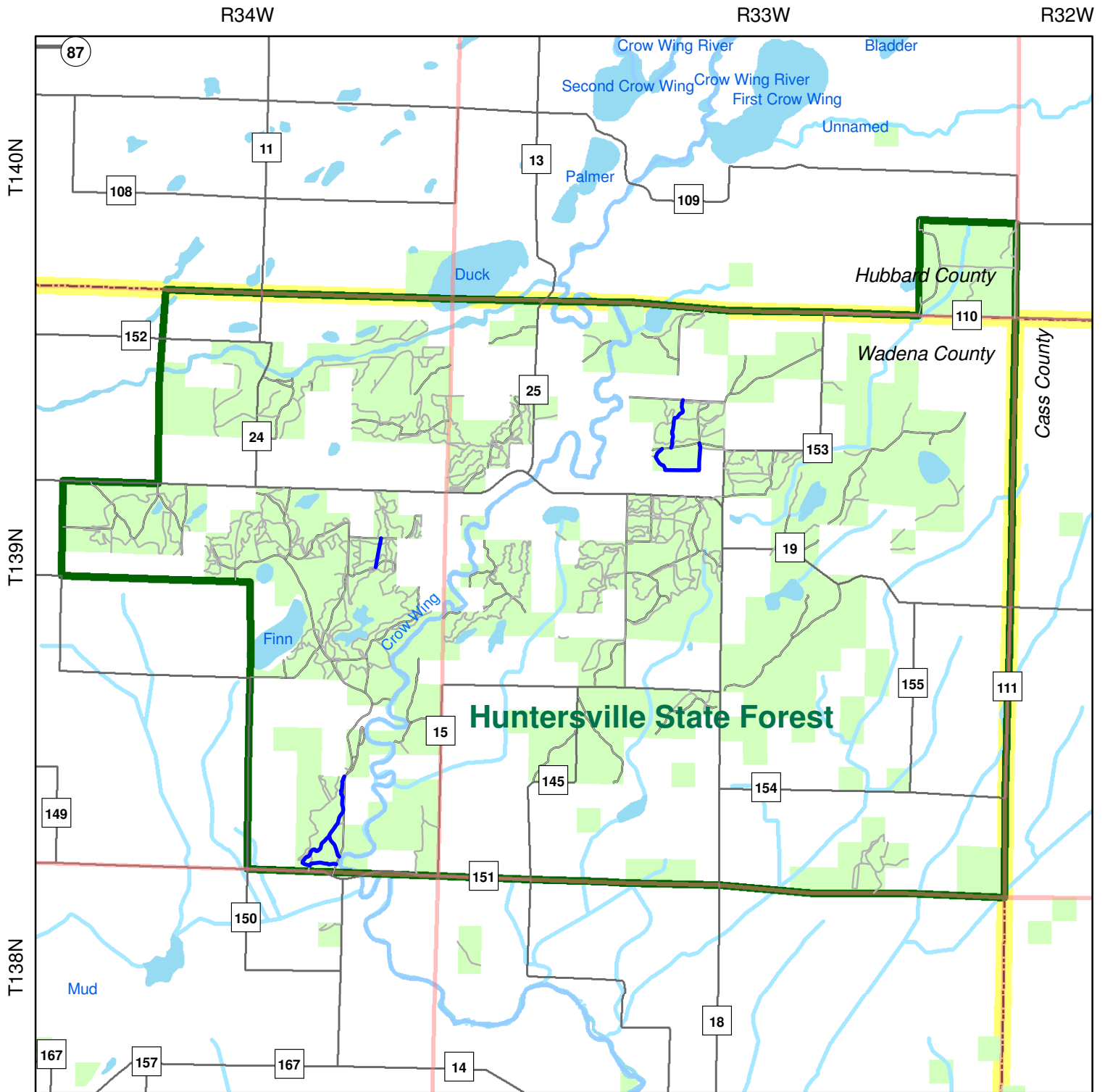
IT IS FURTHER ORDERED that the designation of the forest trails identified in *Exhibits A, B, and C* shall become effective on December 31, 2008.

Dated: November 20, 2007

Mark Holsten, Commissioner

Minnesota Department of Natural Resources

Exhibit A: All-Terrain Vehicle / Off Highway Motorcycle (ATV/OHM) Trail Designation



- ATV/OHM Trail
- PLS Townships
- Major Roads
- State Forest Boundaries
- Major Rivers and Streams
- Major Lakes
- State Forest Lands
- County Boundaries

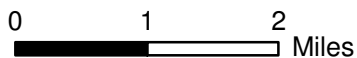
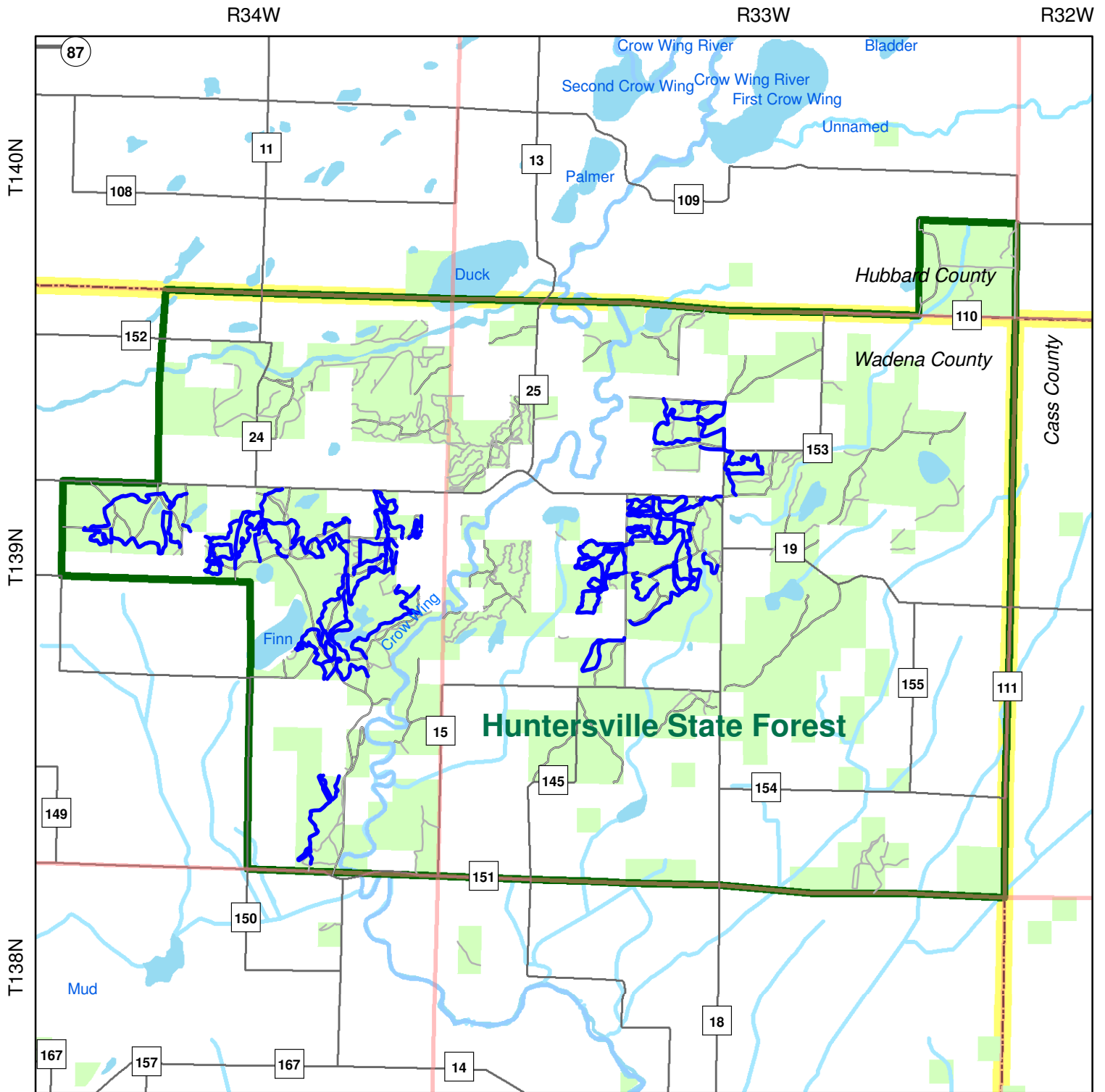


Exhibit B: Off Highway Motorcycle (OHM) Trail Designation



- OHM-only Trail
- PLS Townships
- Major Roads
- State Forest Boundaries
- Major Rivers and Streams
- Major Lakes
- State Forest Lands
- County Boundaries

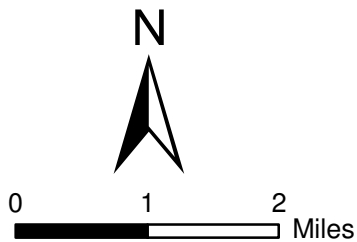
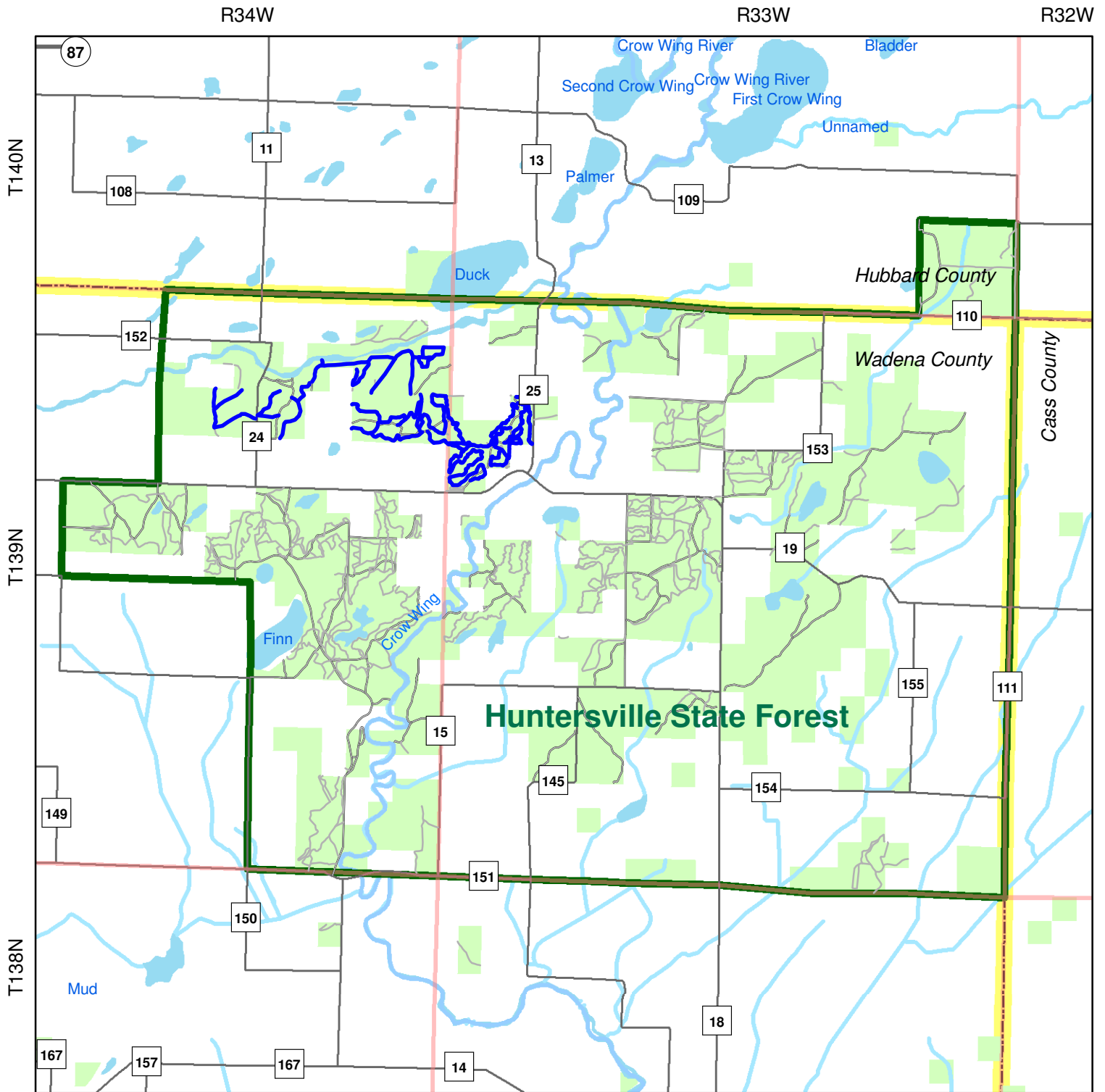


Exhibit C: Horseback Trail Designation



- Horseback Trail
- PLS Townships
- Major Roads
- State Forest Boundaries
- Major Rivers and Streams
- Major Lakes
- State Forest Lands
- County Boundaries

