
 Proposed Restoration Area  
 MnDNR Rivers and Streams



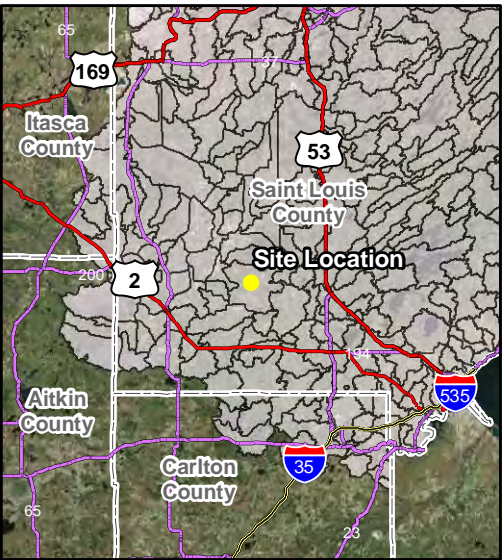
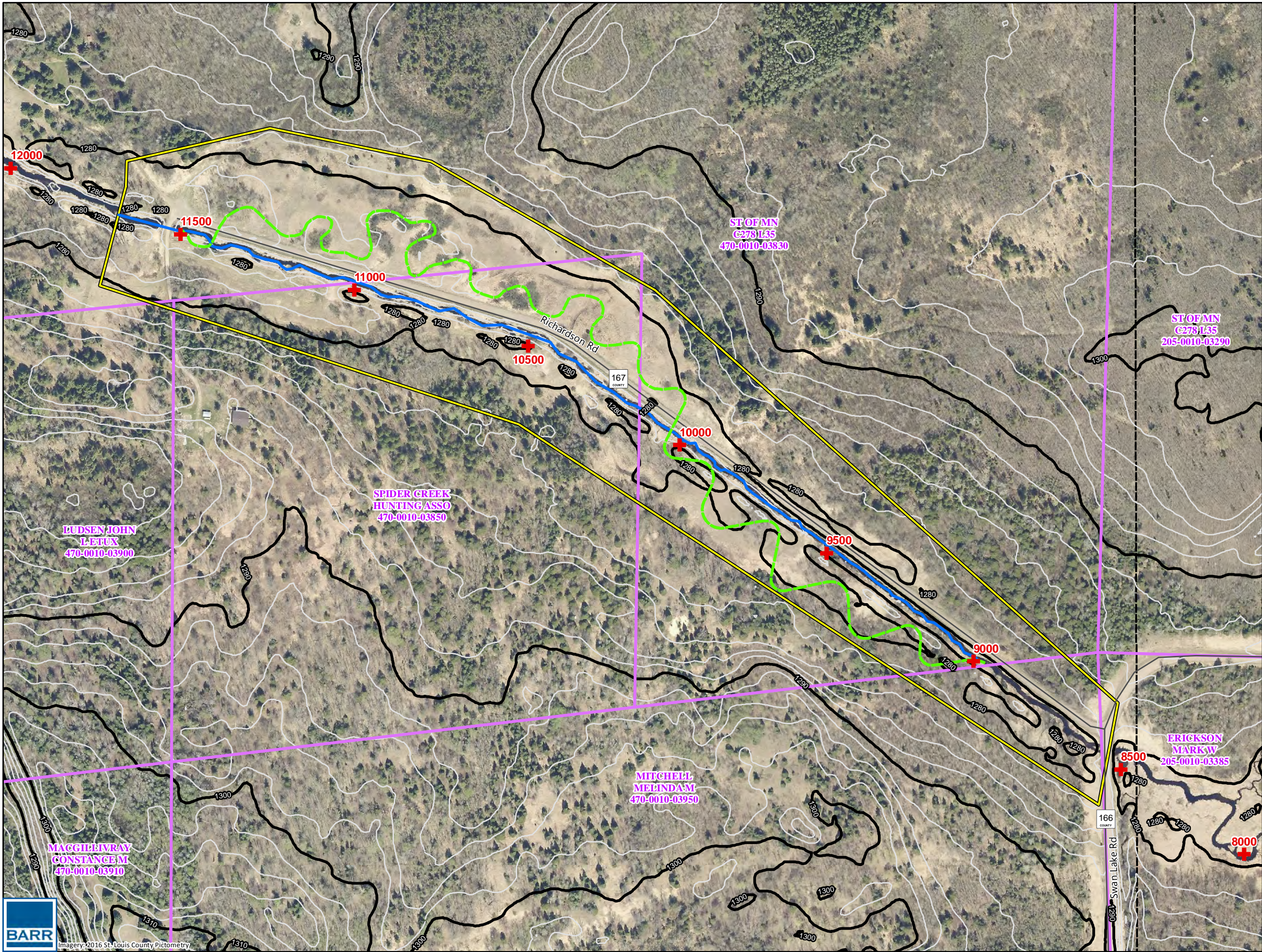
0 1,000 2,000  
 Feet

USGS Topographic Map  
 Spider Creek Restoration EAW  
 U.S. Steel Corporation  
 St. Louis County, MN

FIGURE 2



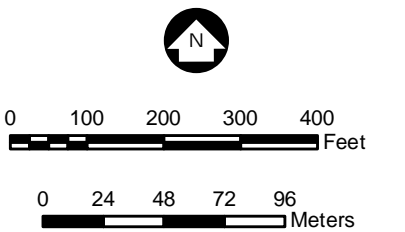




Service Layer Credits: Source: Esri, DigitalGlobe, GeoEye, Earthstar Geographics, CNES/Airbus DS, USDA, USGS, AEX, Getmapping, Aerogrid, IGN, IGP, swisstopo, and the GIS User Community

- Station Points (500 ft Increments)
- Proposed Restoration Channel
- Existing Channel
- Proposed Project Area
- Parcels (August 2015)
- Topographic Lines
  - Index (10 ft Interval)
  - Intermediate (2 ft Interval)

Contours derived from 2012 MN DNR LiDAR  
\*The flood prone width was estimated as 2 times the Maximum Proposed Stream Bankfull Depth.

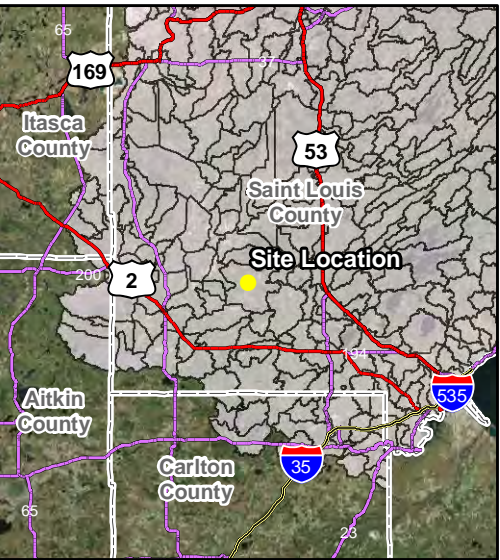
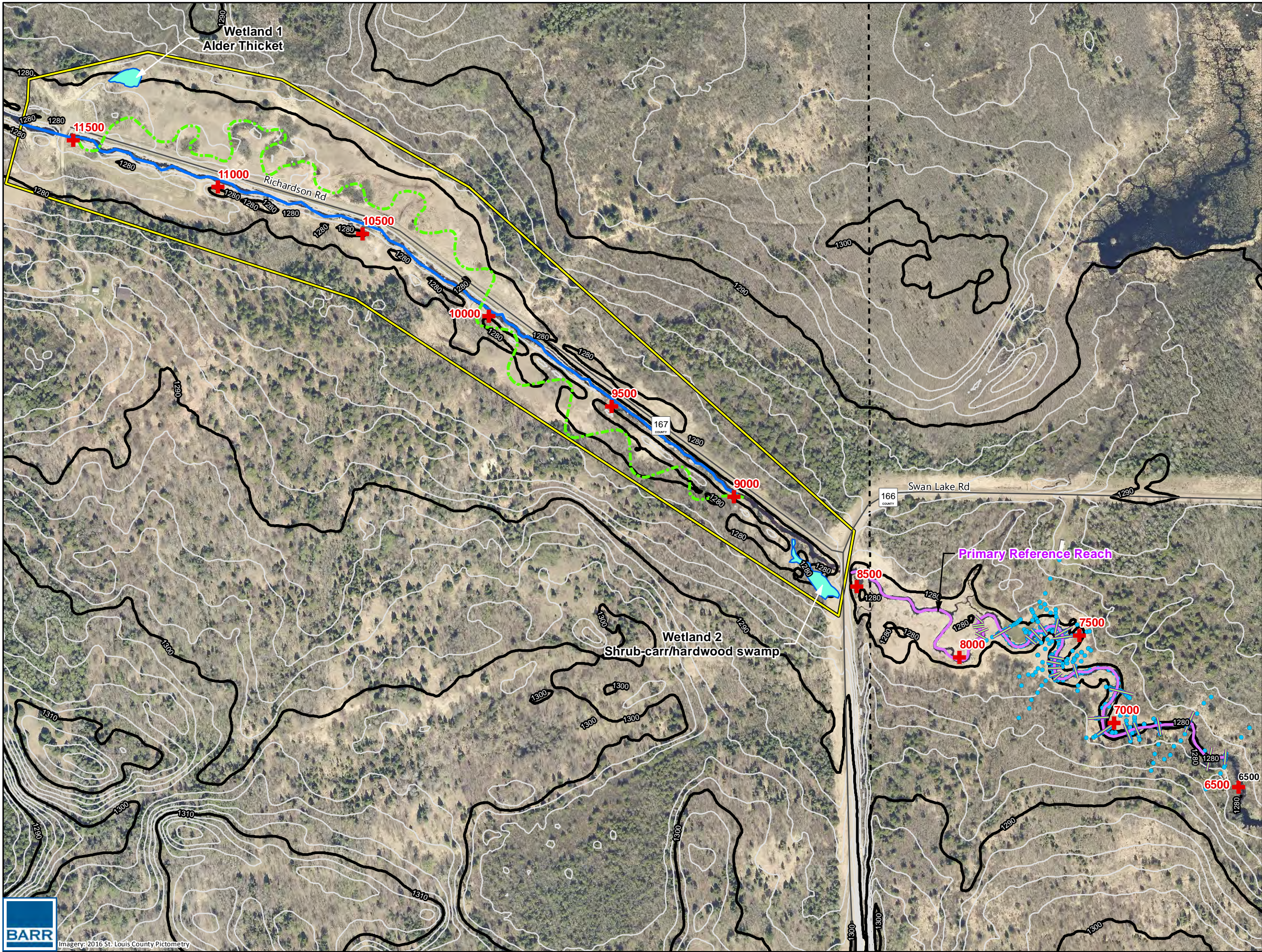


Proposed Restoration Reach  
Spider Creek Restoration EAW  
U.S. Steel Corporation  
St. Louis County, MN

FIGURE 3



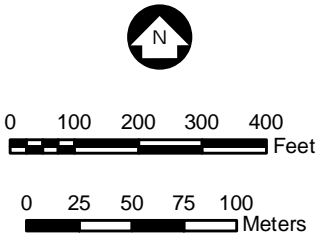




Service Layer Credits: Source: Esri, DigitalGlobe, GeoEye, Earthstar Geographics, CNES/Airbus DS, USDA, USGS, AEX, Getmapping, Aerogrid, IGN, IGP, swisstopo, and the GIS User Community

- Station Points (500 ft Increments)
- Proposed Restoration Channel
- Primary Reference Reach
- Cross Section
- Survey Points
- Existing Channel
- Proposed Project Area
- Delineated Wetlands
- Topographic Lines**
  - Index (10 ft Interval)
  - Intermediate (2 ft Interval)

Contours derived from 2012 MN DNR LiDAR  
\*The flood prone width was estimated as 2 times the Maximum Proposed Stream Bankfull Depth.



1 inch = 300 feet  
1 centimeter = 36 meters

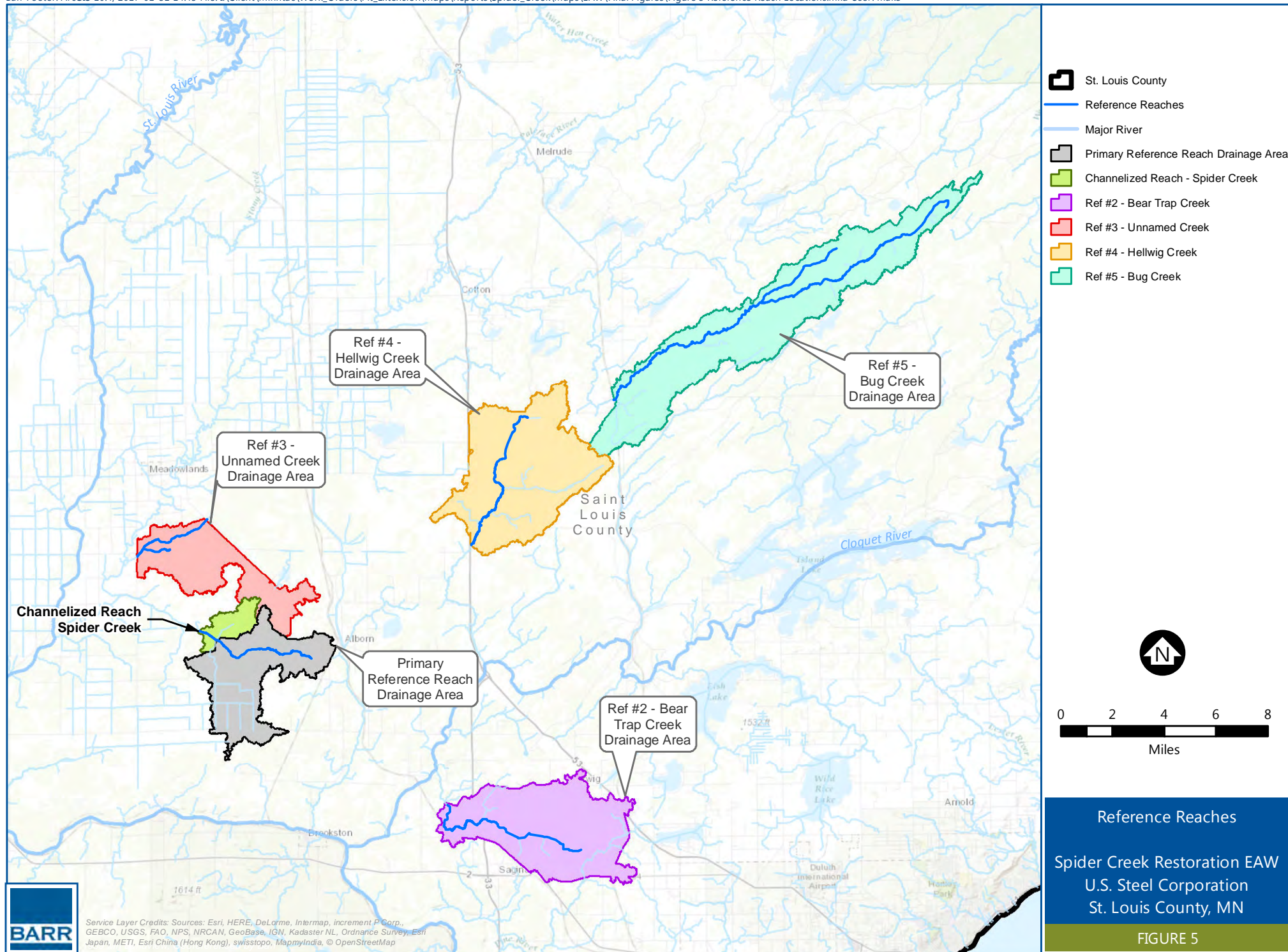
Proposed Restoration Plan

Spider Creek Restoration EAW  
U.S. Steel Corporation  
St. Louis County, MN

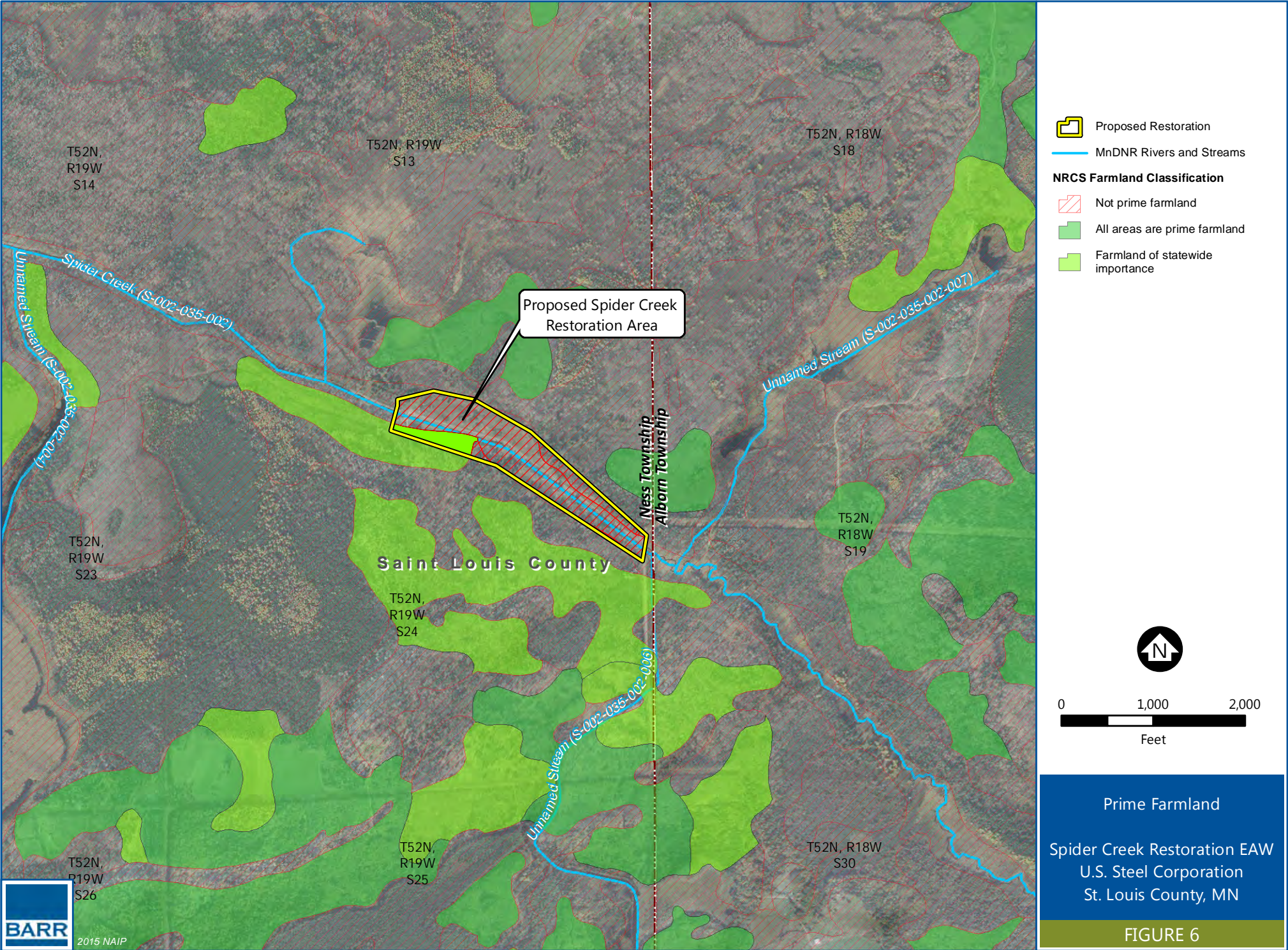
FIGURE 4











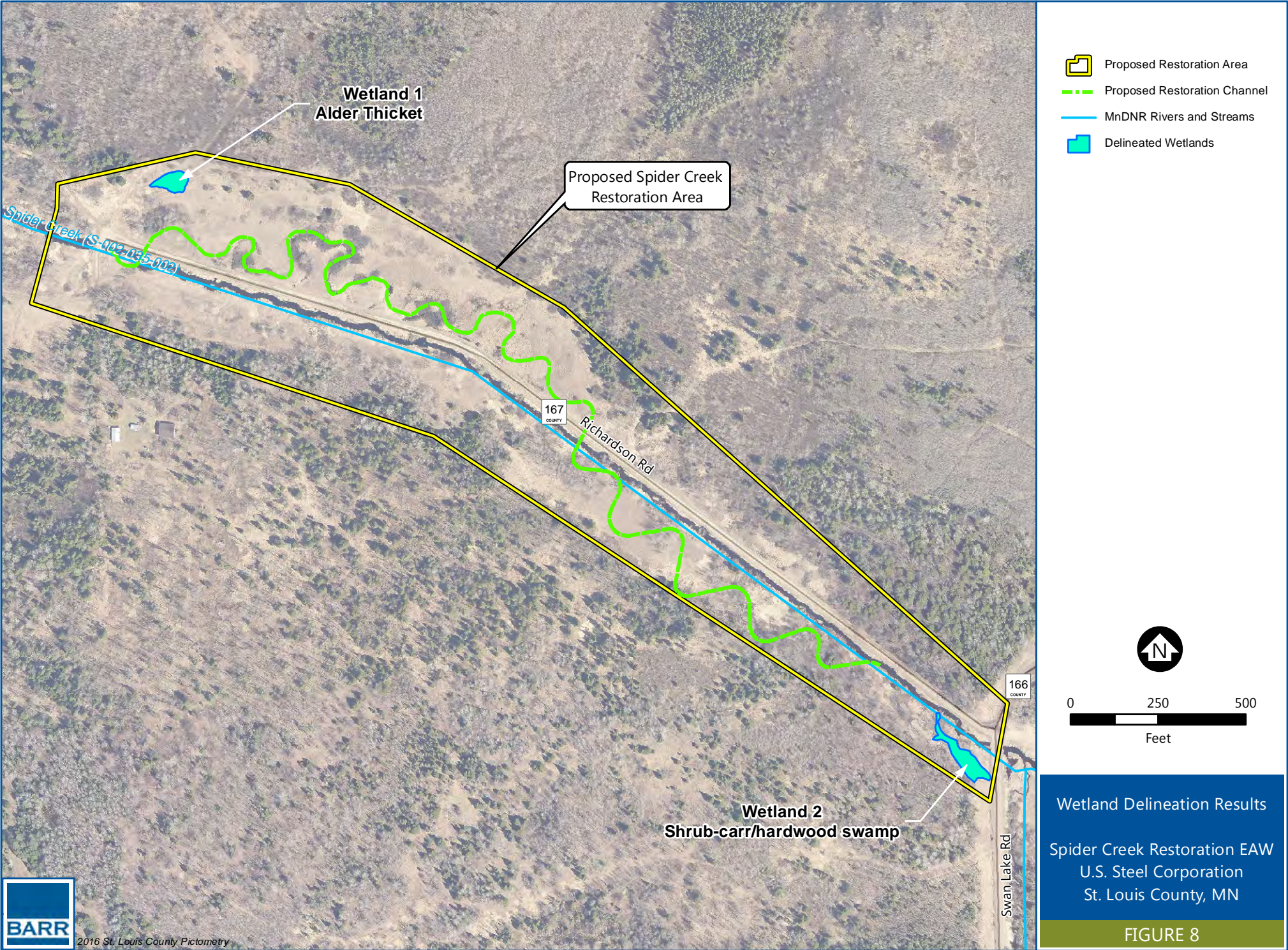




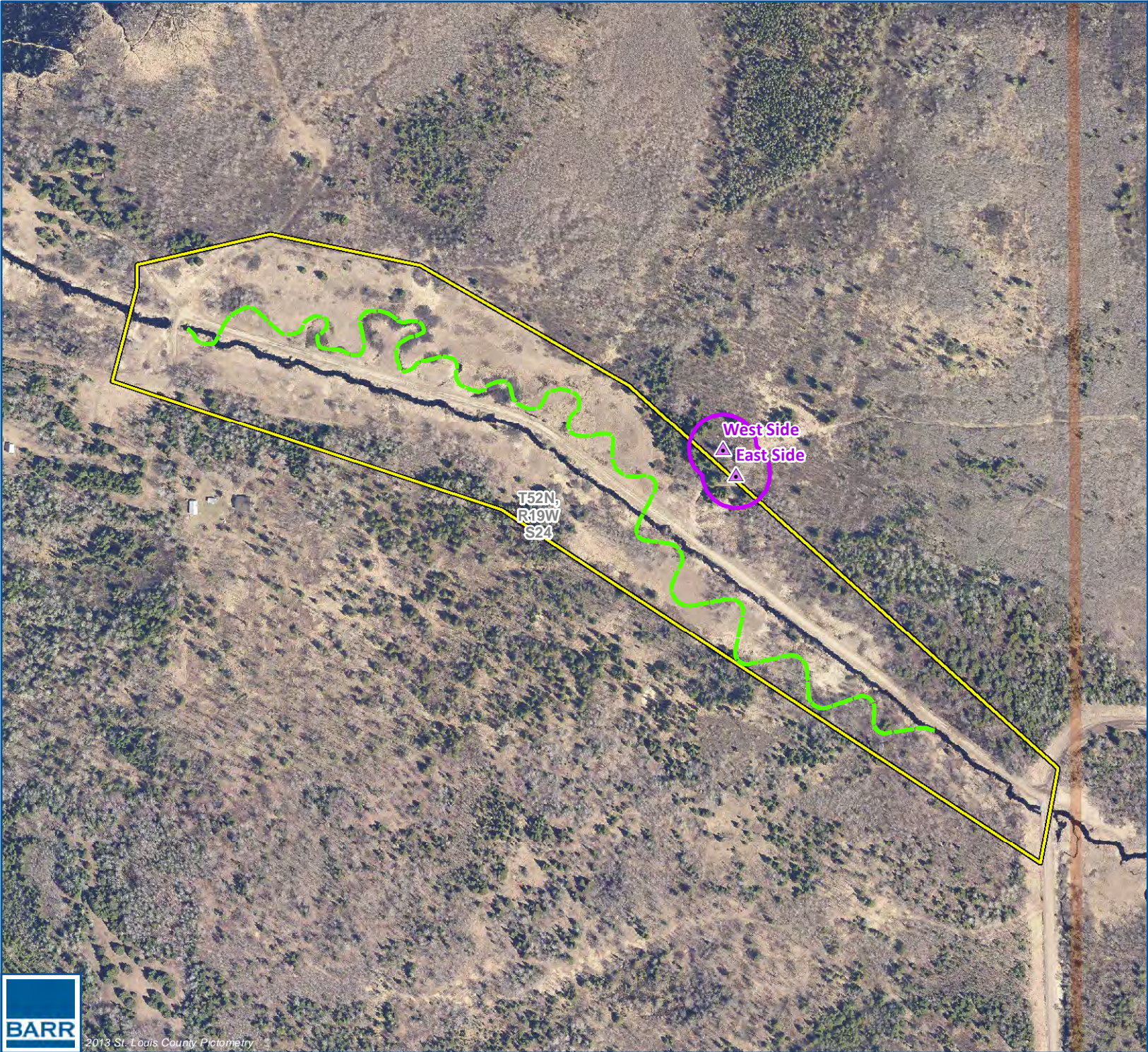
Spider Creek Restoration EAW  
U.S. Steel Corporation  
St. Louis County, MN

FIGURE 7









- Proposed Restoration Channel
- Cultural Resources
- Cultural Resource Exclusion Area (100 ft Buffer)
- Proposed Restoration Area



0 100 200 300 400  
Feet

Cultural Resources  
Survey Results

Spider Creek Restoration EAW  
U.S. Steel Corporation  
St. Louis County, MN

FIGURE 9

