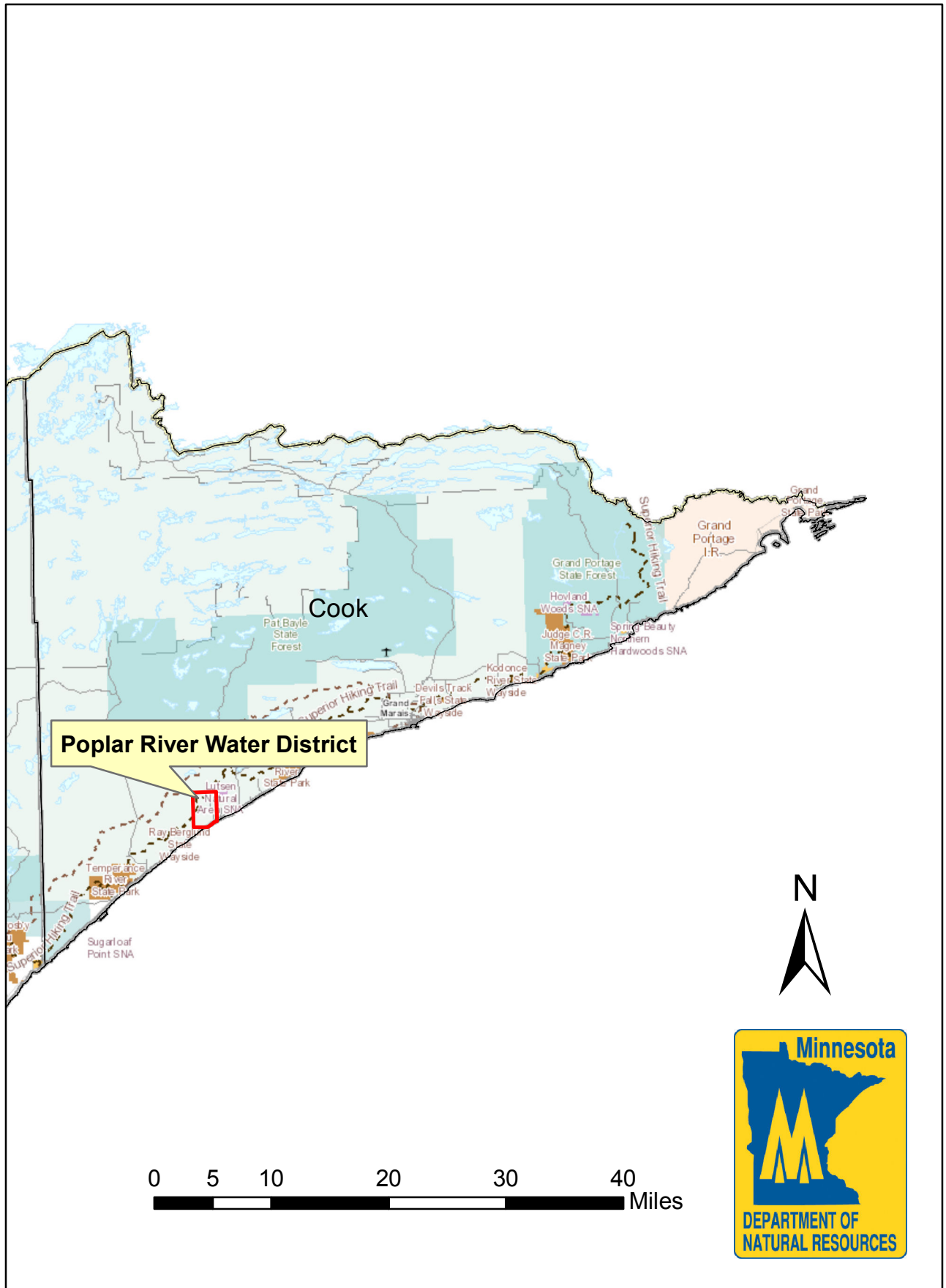
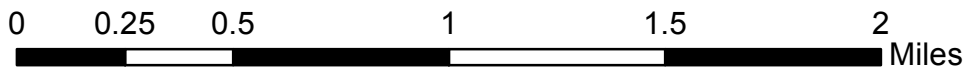
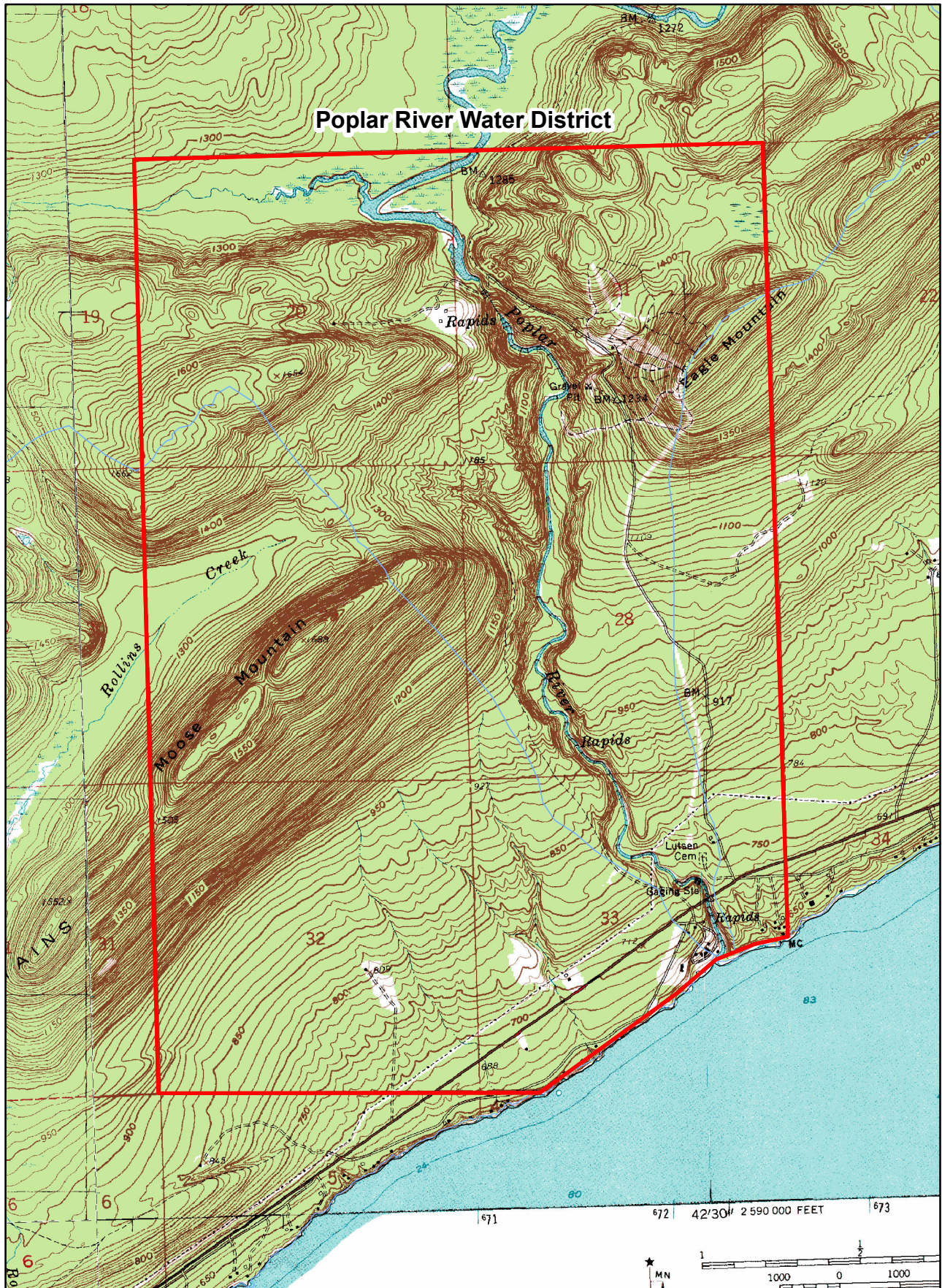
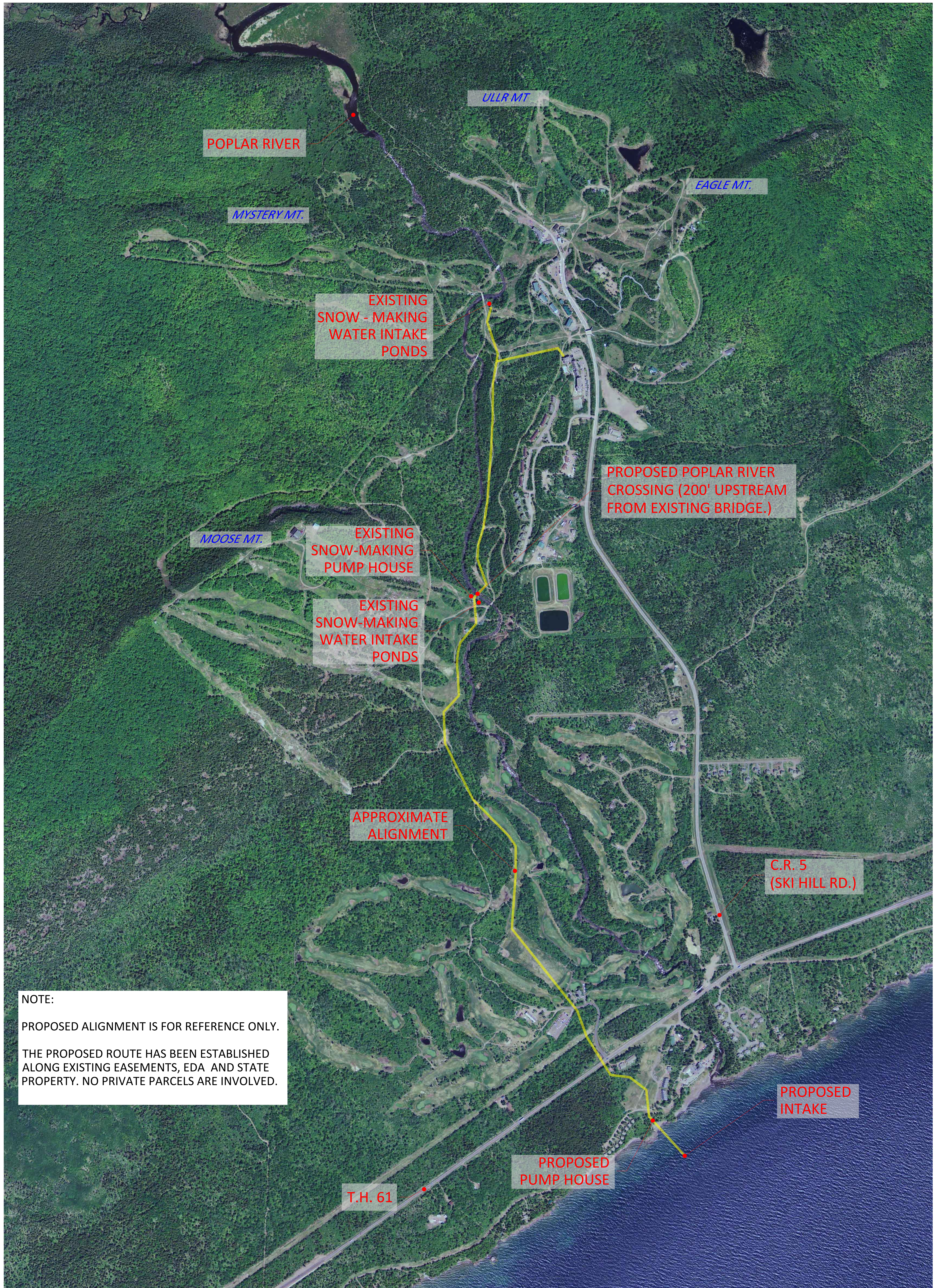


County Map



USGS Map





POPLAR RIVER

ULLR MT.

EAGLE MT.

MYSTERY MT.

EXISTING SNOW-MAKING WATER INTAKE PONDS

PROPOSED POPLAR RIVER CROSSING (200' UPSTREAM FROM EXISTING BRIDGE.)

MOOSE MT.

EXISTING SNOW-MAKING PUMP HOUSE

EXISTING SNOW-MAKING WATER INTAKE PONDS

APPROXIMATE ALIGNMENT

C.R. 5 (SKI HILL RD.)

NOTE:

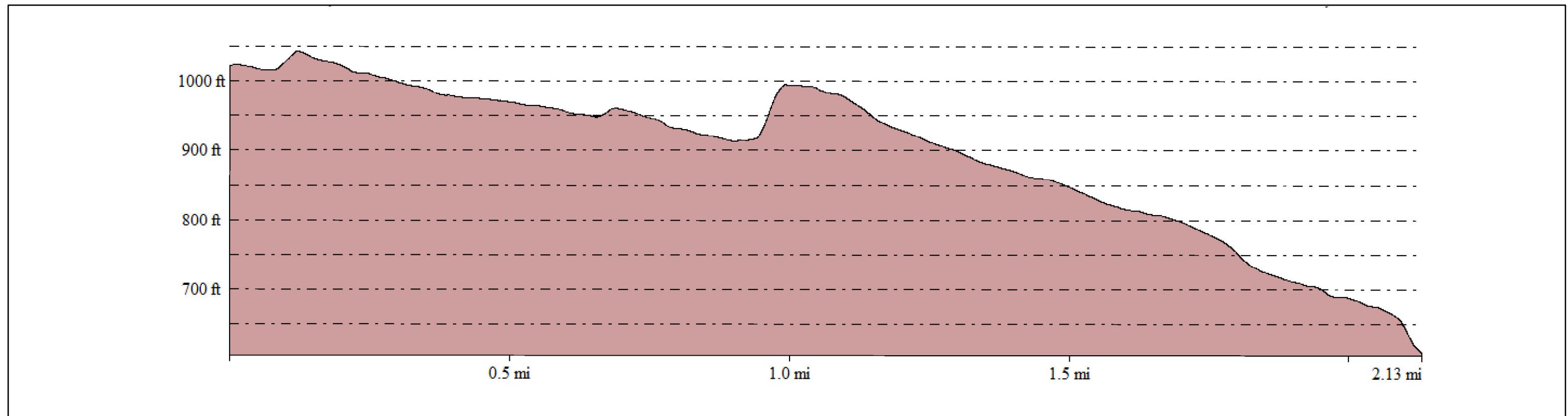
PROPOSED ALIGNMENT IS FOR REFERENCE ONLY.

THE PROPOSED ROUTE HAS BEEN ESTABLISHED ALONG EXISTING EASEMENTS, EDA AND STATE PROPERTY. NO PRIVATE PARCELS ARE INVOLVED.

PROPOSED INTAKE

PROPOSED PUMP HOUSE

T.H. 61



Assignment of soil type

The soil type GIS layer downloaded in the more detailed CZMA format was opened into GeoWEPP to assign the soil type properties to the hillslope elements generated in GeoWEPP. The CZMA data base showed eight distinct soil types within the lower Poplar River watershed, while the STATSGO database (map not shown) had only three soil types within the watershed boundary. The soil parameters contained in the CZMA database include the soil thickness, field capacity, wilting point, hydraulic conductivity, soil erodibility, and soil critical shear strength. A map of the soil map with the overlay of the delineated hillslope elements is presented in Figure 5.

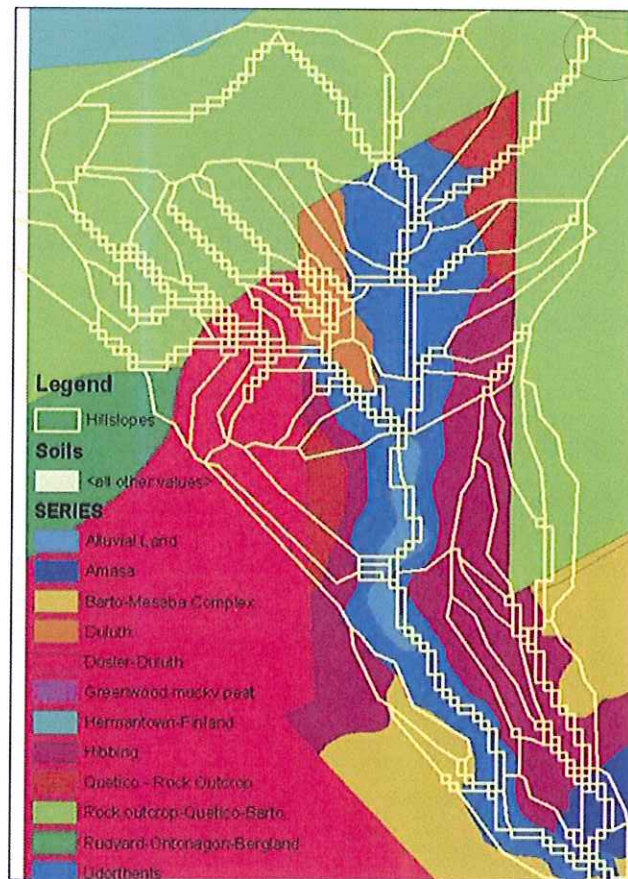


Figure 5. Distribution of soil types with the lower Poplar River watershed using the Coast Zone Management Area soil database.