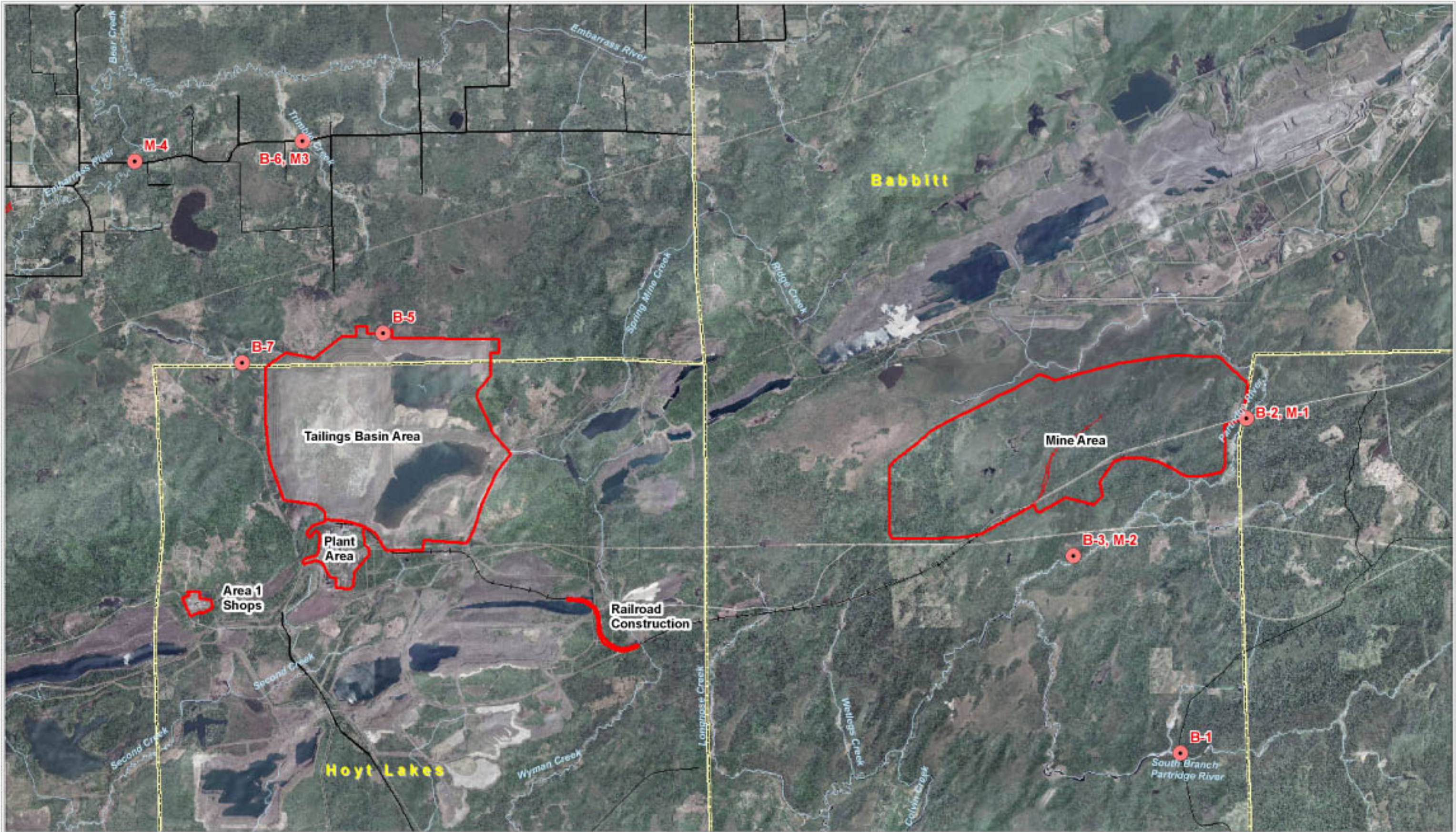


Barri Foster: Date: 12/10/2004 11:30:20 AM File: I:\Client\Polymet\Map\CAW_Drain\Question 11\Figure 11-4 Biological Sampling Locations.mxd User: jpa



- Sampling Locations
(M=Mussel, B=Fish and Invertebrates)
- ▭ Project Boundaries
- ▭ Municipalities

- Railroads**
- Existing
 - Proposed



0 0.5 1 2 Miles

Figure 11-4
BIOLOGICAL SAMPLING
LOCATIONS