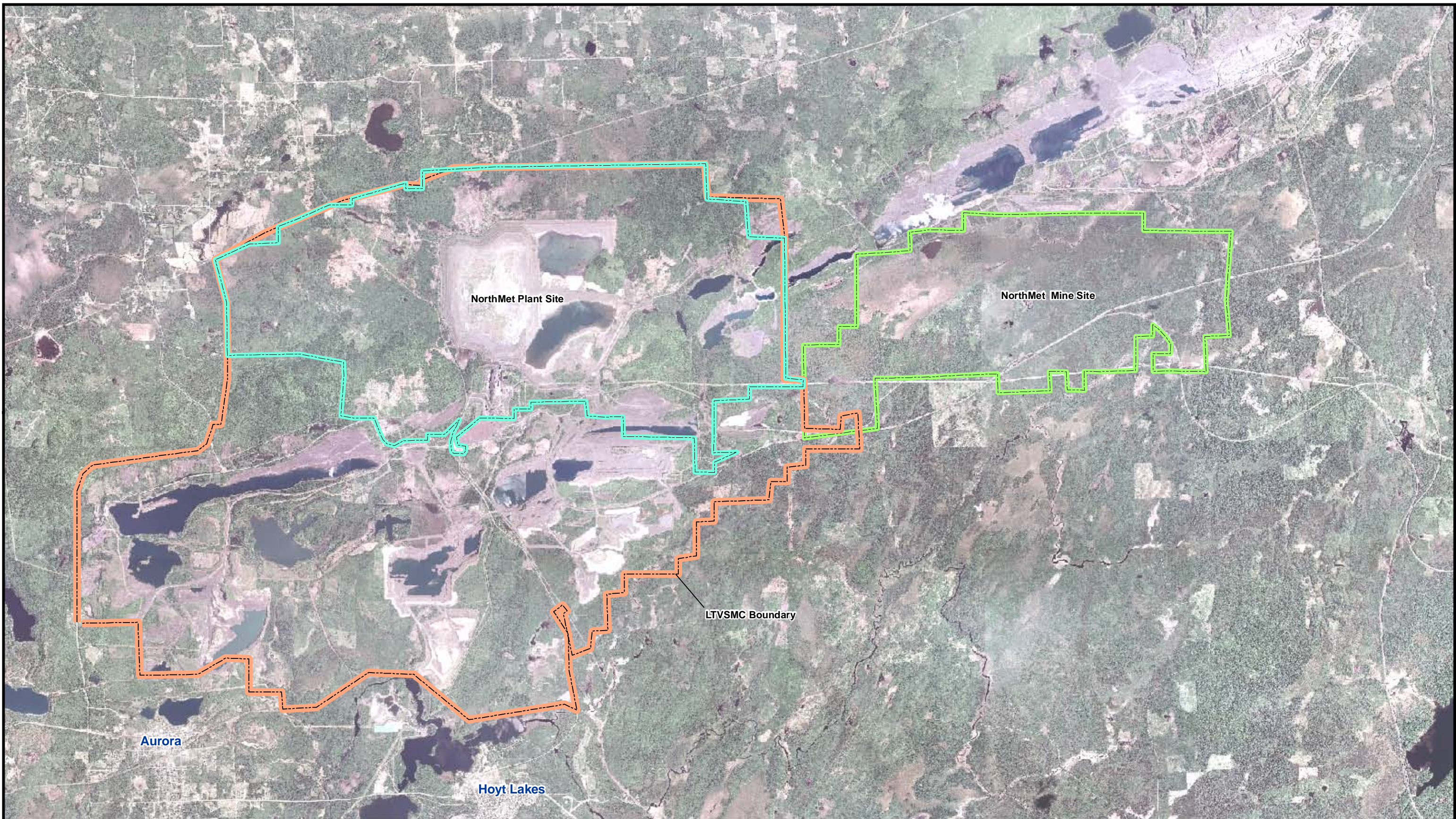


Source: Barr Engineering



Figure 4.6-1
Wind Frequency Distribution Plot for
Hibbing, Minnesota (2001 - 2005)

NorthMet Project
PolyMet Mining, Inc.
St. Louis County, Minnesota
October 2009



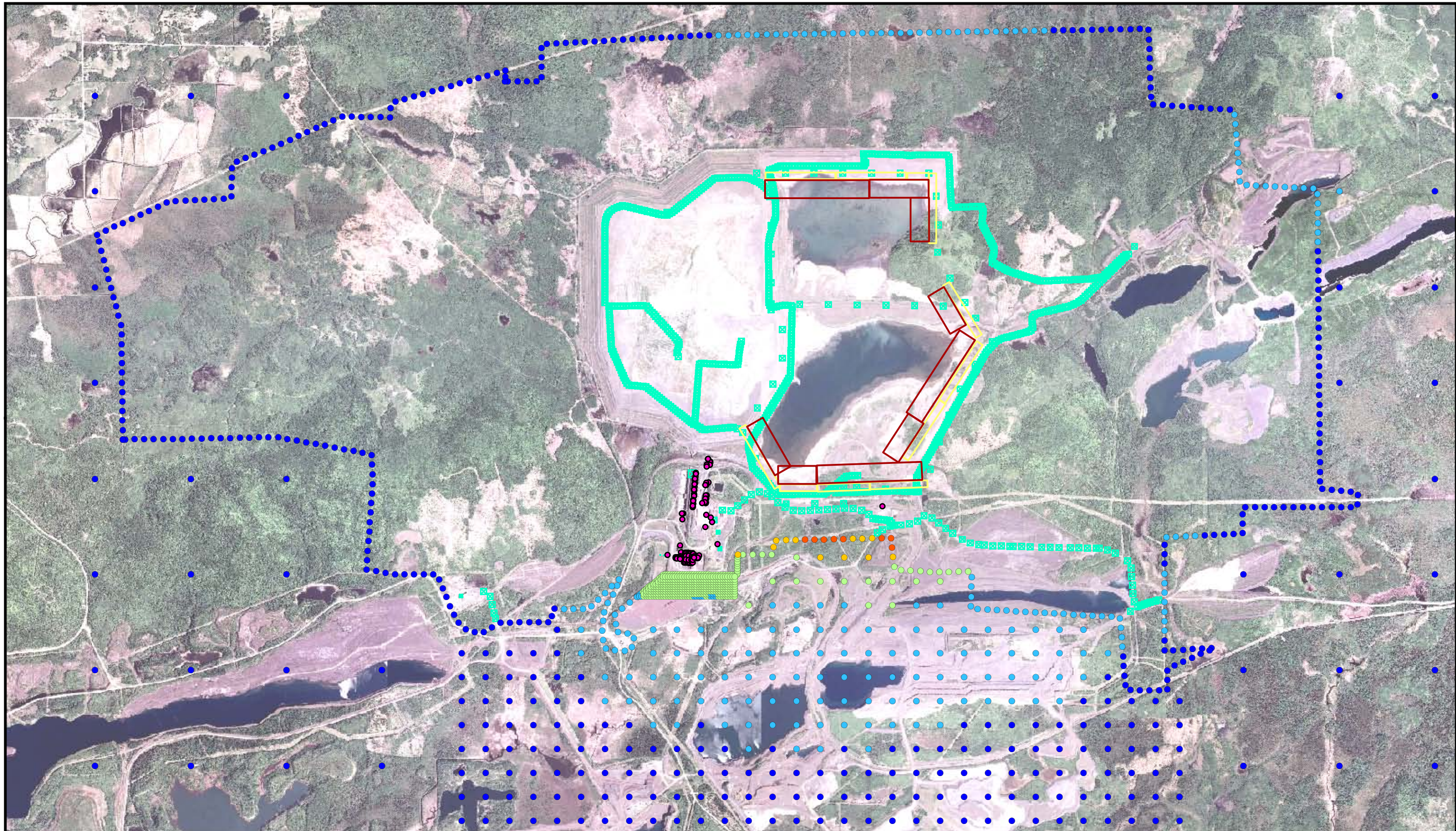
Map Source: Barr Engineering

- LTVSMC Modeling Boundary
- NorthMet Plant Site Modeling Boundary
- NorthMet Mine Site Modeling Boundary



Figure 4.6-2
NorthMet and LTVSMC Modeling
Boundary Locations
NorthMet Project
PolyMet Mining, Inc.
St. Louis County, Minnesota

October 2009



24 Hour H6H Results (ug/m3)

- 34 - 45
 - 46 - 65
 - 66 - 85
 - 86 - 100
 - 101 - 119
- Point Sources
 - LTV Coarse Tailings
 - PolyMet Bulk Tailings
 - Volume Sources

PM10 24 hour NAAQS = 150 ug/m3
Background Concentration of 33 ug/m3 Included

N

0 1,250 2,500 5,000 Feet





Figure 4.6-3
Plot of PM10 NAAQS 24 hour Highest Sixth High Concentrations at Plant Site (Proposed Action)
NorthMet Project
PolyMet Mining, Inc.
St. Louis County, Minnesota
October 2009

