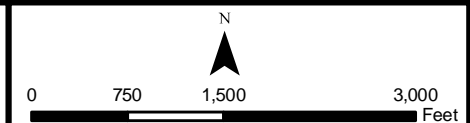


Map Source: Barr Engineering

- Mine Site
- Railroad
- Dunka Road
- Mine to Plant Pipeline

- Stockpile Covered in Previous Years
- Stockpile Covered in Year 20




**Figure 3.2-1**  
**Proposed Facility Locations**  
**(Mine Site Alternative)**  
 NorthMet Project  
 PolyMet Mining, Inc.  
 St. Louis County, Minnesota

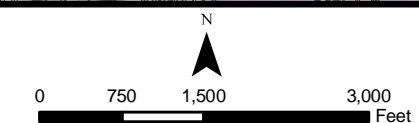
October 2009





Source: Barr Engineering

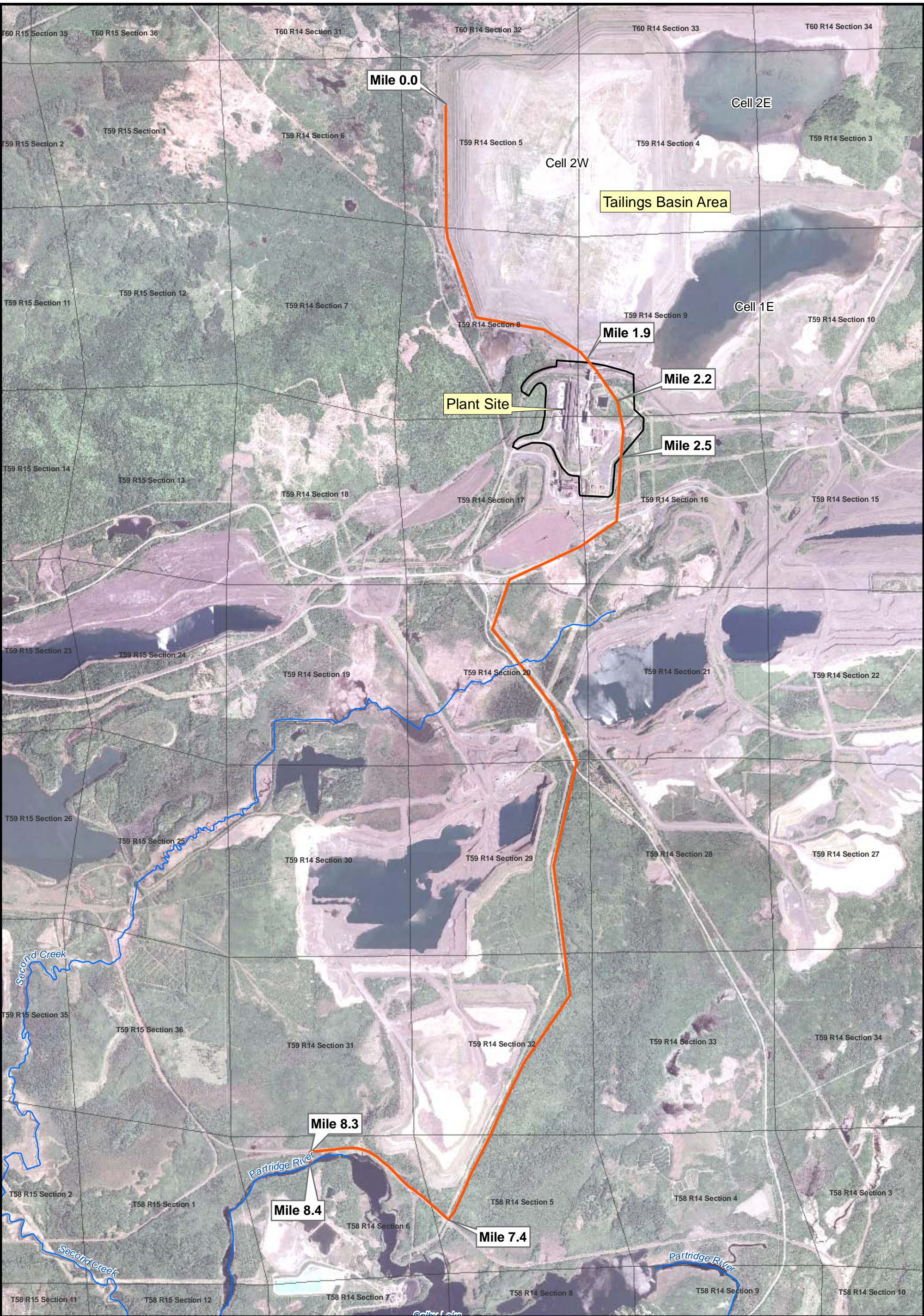
 Approximate Extent of  
Extraction Wells



**Figure 3.2-2**  
**Proposed Extraction Well Locations**  
**(Tailings Basin Alternative)**  
NorthMet Project  
PolyMet Mining, Inc.  
St. Louis County, Minnesota

October 2009

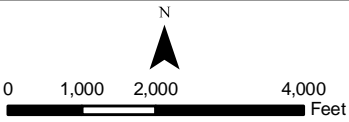




Map Source: Barr Engineering

Proposed Pipeline

Mile	Pipeline Location
0.0	Crosses Tailings Basin Site
1.9	Enters at North Edge of Plant Site
2.2	Begins to Parallel Plant Water Supply Pipeline
2.5	Exits at South Edge of Plant Site
7.4	End of Parallel of Plant Water Supply Pipeline
8.3	Parallels Edge of CN Railroad Right-of-Way
8.4	Crosses Minnesota Power Easement to Partridge River Discharge Site



**Figure 3.2-3**  
**Proposed Pipeline to Partridge River**  
**(Tailings Basin Alternative)**  
**NorthMet Project**  
**PolyMet Mining, Inc.**  
**St. Louis County, Minnesota**

October 2009