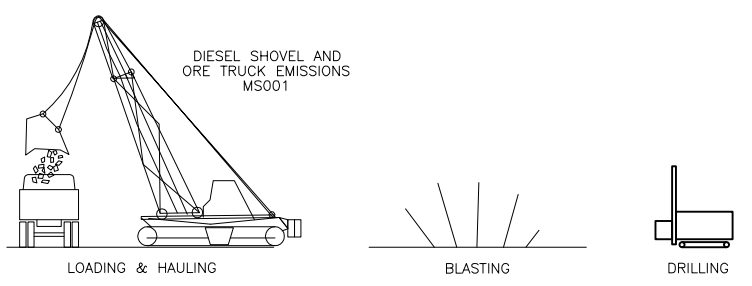


LEGEND
 ----- = OPTIONAL
 [] = DUST CONTROL BOUNDARIES

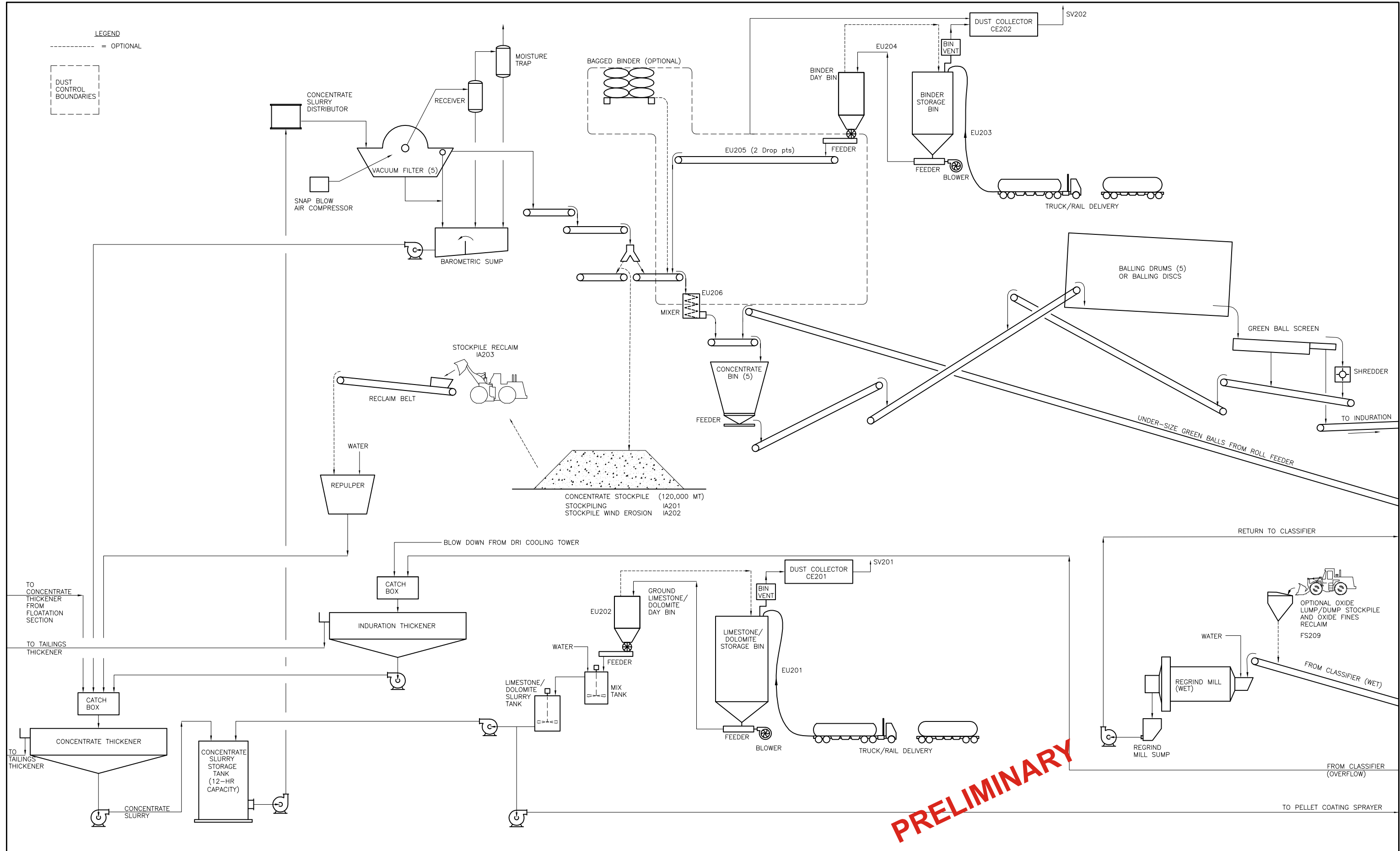


- DRILLING
 OVERBURDEN LOADOUT
 OVERBURDEN UNLOADING (TRUCK)
 WASTE ROCK LOADOUT
 WASTE ROCK UNLOADING (TRUCK)
 CRUDE ORE LOADOUT
 HAUL ROAD EMISSIONS
 SERVICE ROAD EMISSIONS
 OVERBURDEN/WASTE ROCK AREA
 WIND EROSION
 OVERBURDEN/WASTE ROCK DOZER ACTIVITY
- FS001
 IA002
 IA003
 IA004
 IA005
 FS006
 FS007
 FS008
 FS009
 FS010

PRELIMINARY

rig M:\CAD\2331286\11343_5.DWG Plot at 1 02/09/2005 14:03:48

I HEREBY CERTIFY THAT THIS PLAN WAS PREPARED BY ME OR UNDER MY DIRECT SUPERVISION AND THAT I AM A DULY REGISTERED PROFESSIONAL ENGINEER UNDER THE LAWS OF THE STATE OF MINNESOTA. DATE: _____ REG. NO.: _____		BARR Project Office: BARR ENGINEERING CO. 4700 WEST 77TH STREET MINNEAPOLIS, MN. 55435-4803 Ph: 1-800-632-2277 Fax: (612) 832-2601 www.barr.com		Scale: NONE Date: 1/17/05 Drawn: RLG Checked: Designed: Approved:		MINNESOTA STEEL INDUSTRIES FIGURE 23-1		IRON ORE PROCESSING PLANT Nashauk, Minnesota PRELIMINARY PROCESS FLOW DIAGRAM SHEET 1		BARR PROJECT No. 23/31-286 E003 CLIENT PROJECT No. DWG. No. _____ REV. No. B						
NO.	BY	CHK	APP.	DATE	REVISION	DESCRIPTION	DATE	REG. NO.	RELEASED TO/FOR	A	B	C	0	1	2	3



PRELIMINARY

r19 M:\CAD\2331286\11344_5.DWG Plot at 1 02/09/2005 14:04:26

NO.	BY	CHK	APP.	DATE	REVISION DESCRIPTION

I HEREBY CERTIFY THAT THIS PLAN WAS PREPARED BY ME OR UNDER MY DIRECT SUPERVISION AND THAT I AM A DULY REGISTERED PROFESSIONAL ENGINEER UNDER THE LAWS OF THE STATE OF MINNESOTA.

DATE _____ REG. NO. _____

CLIENT	BID	CONSTRUCTION	RELEASED TO/FOR	A	B	C	0	1	2	3

BARR
 Project Office:
BARR ENGINEERING CO.
 4700 WEST 77TH STREET
 MINNEAPOLIS, MN.
 55435-4803
 Corporate Headquarters:
 Minneapolis, Minnesota
 Ph: 1-800-632-2277
 Fax: (612) 832-2601
 www.barr.com

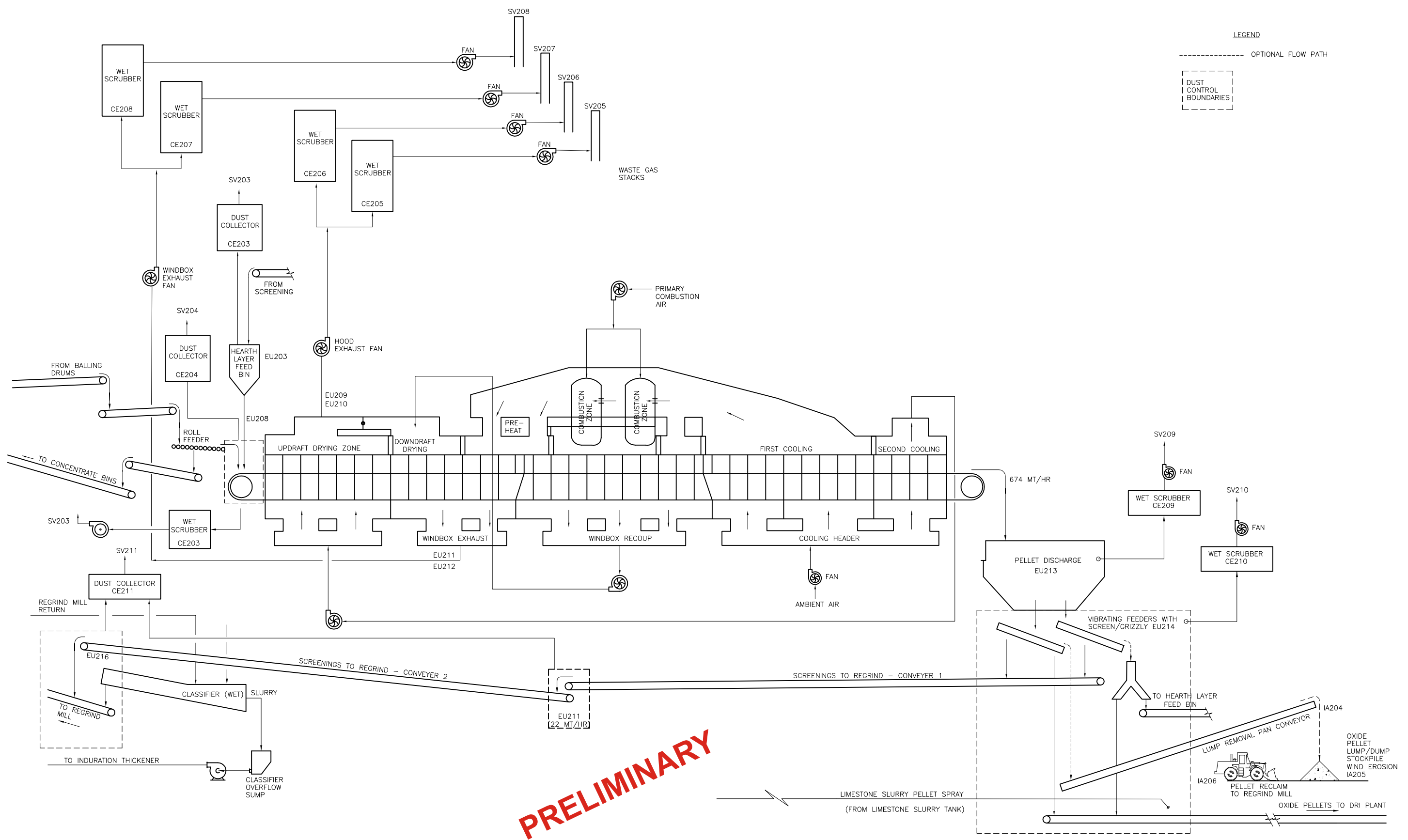
Scale	None
Date	1/17/05
Drawn	RLG
Checked	
Designed	
Approved	

MINNESOTA STEEL INDUSTRIES
 FIGURE 23-1

IRON ORE PROCESSING PLANT
 Nashauk, Minnesota
PRELIMINARY PROCESS FLOW DIAGRAM
 SHEET 2

BARR PROJECT No.	23/31-286 E003
CLIENT PROJECT No.	
DWG. No.	
REV. No.	A

rig: M:\CAD\2331286\11345_BLDWG Plot dt: 1 02/09/2005 14:09:43



PRELIMINARY

NO.	BY	CHK	APP.	DATE	REVISION DESCRIPTION

I HEREBY CERTIFY THAT THIS PLAN WAS PREPARED BY ME OR UNDER MY DIRECT SUPERVISION AND THAT I AM A DULY REGISTERED PROFESSIONAL ENGINEER UNDER THE LAWS OF THE STATE OF MINNESOTA.

DATE: _____ REG. NO. _____

CLIENT	BID	CONSTRUCTION	RELEASED TO/FOR	A	B	C	0	1	2	3

BARR
 Project Office:
BARR ENGINEERING CO.
 4700 WEST 77TH STREET
 MINNEAPOLIS, MN.
 55435-4803
 Corporate Headquarters:
 Minneapolis, Minnesota
 Ph: 1-800-632-2277
 Fax: (612) 832-2601
 www.barr.com

Scale	NONE
Date	1/17/05
Drawn	RLG
Checked	
Designed	
Approved	

MINNESOTA STEEL INDUSTRIES
FIGURE 23-1

IRON ORE PROCESSING PLANT
 Nashauk, Minnesota
PRELIMINARY PROCESS FLOW DIAGRAM
SHEET 3

BARR PROJECT No.	23/31-286 E003
CLIENT PROJECT No.	
DWG. No.	
REV. No.	C

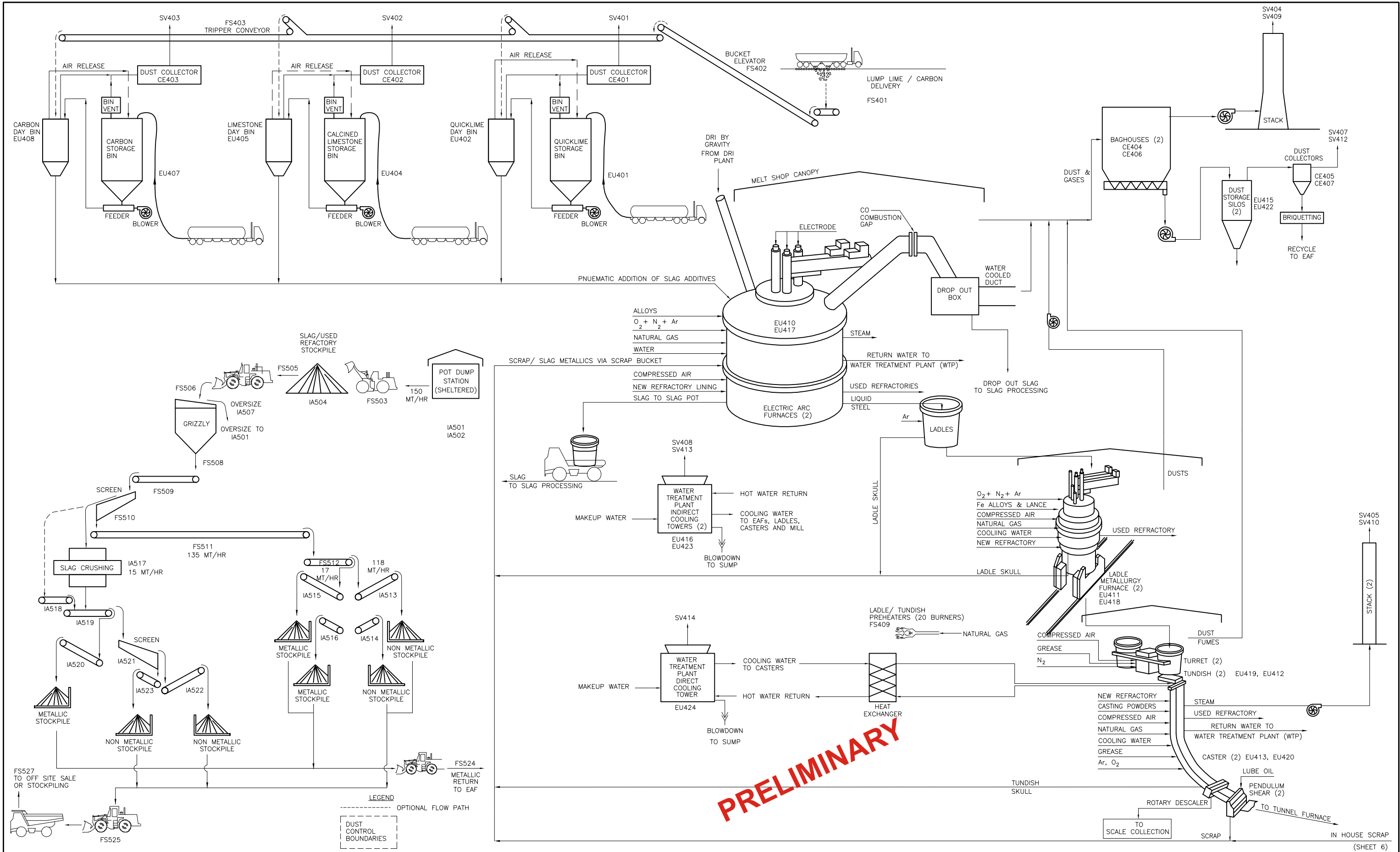


Fig. M:\CAD\2331286\11347_8.DWG Plot at 1 02/09/2005 14:22:03

NO.	BY	CHK	APP.	DATE	REVISION DESCRIPTION

I HEREBY CERTIFY THAT THIS PLAN WAS PREPARED BY ME OR UNDER MY DIRECT SUPERVISION AND THAT I AM A DULY REGISTERED PROFESSIONAL ENGINEER UNDER THE LAWS OF THE STATE OF MINNESOTA.

DATE _____ REG. NO. _____

RELEASED TO/FOR	A	B	C	0	1	2	3

BARR
 Project Office:
 BARR ENGINEERING CO.
 4700 WEST 77TH STREET
 MINNEAPOLIS, MN.
 55435-4803
 Ph: 1-800-632-2277
 Fax: (612) 832-2601
 www.barr.com

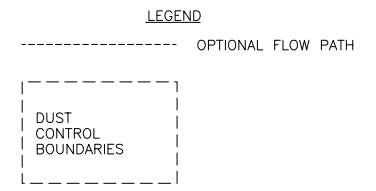
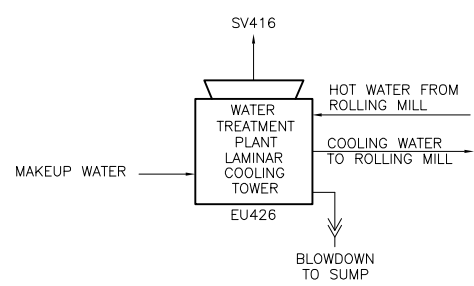
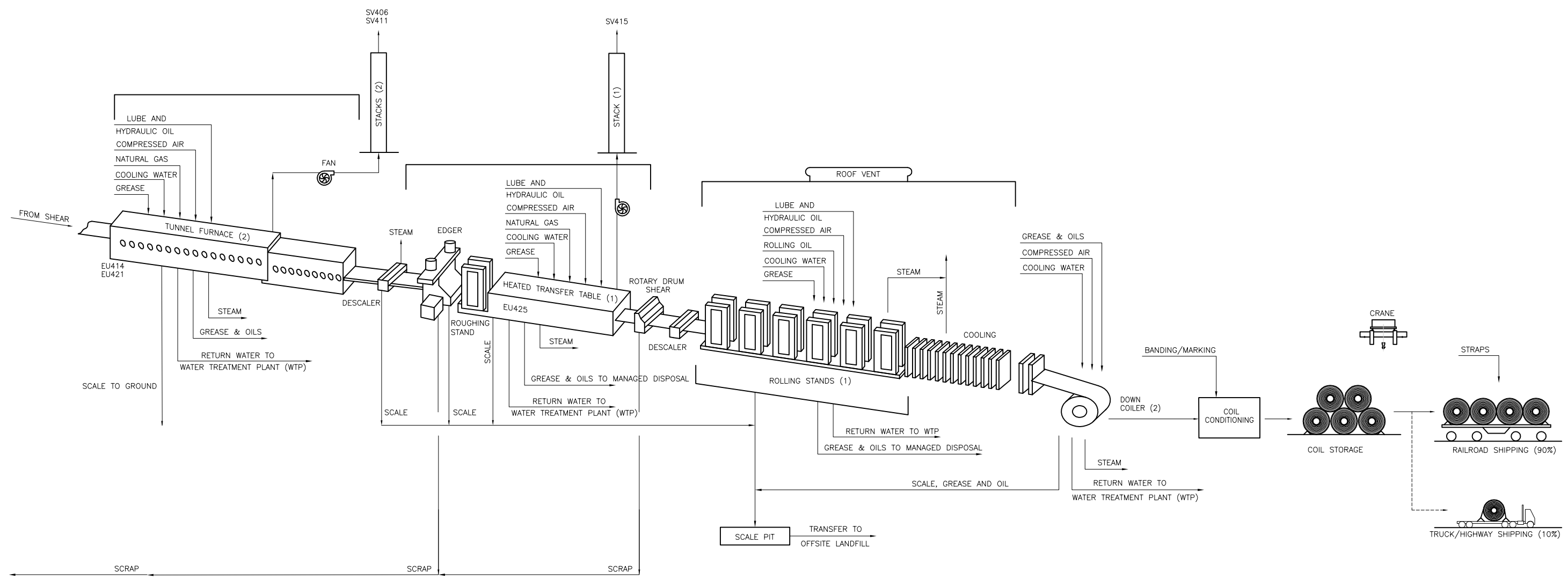
Scale	NONE
Date	1/17/05
Drawn	RLG
Checked	
Designed	
Approved	

MINNESOTA STEEL INDUSTRIES
 FIGURE 23-1

IRON ORE PROCESSING PLANT
 Nashauk, Minnesota
 PRELIMINARY PROCESS FLOW DIAGRAM
 SHEET 5

BARR PROJECT No.	23/31-286 E003
CLIENT PROJECT No.	
DWG. No.	
REV. No.	D

PRELIMINARY



rig M:\CAD\2331286\11346_6.DWG Plot: dt 1 02/09/2005 14:25:03

NO.	BY	CHK	APP.	DATE	REVISION DESCRIPTION

I HEREBY CERTIFY THAT THIS PLAN WAS PREPARED BY ME OR UNDER MY DIRECT SUPERVISION AND THAT I AM A DULY REGISTERED PROFESSIONAL ENGINEER UNDER THE LAWS OF THE STATE OF MINNESOTA.

DATE _____ REG. NO. _____

RELEASED TO/FOR	A	B	C	0	1	2	3

BARR
 Project Office:
BARR ENGINEERING CO.
 4700 WEST 77TH STREET
 MINNEAPOLIS, MN.
 55435-4803
 Corporate Headquarters:
 Minneapolis, Minnesota
 Ph: 1-800-632-2277
 Fax: (612) 832-2601
 www.barr.com

Scale	NONE
Date	1/18/05
Drawn	RLG
Checked	
Designed	
Approved	

MINNESOTA STEEL INDUSTRIES
 FIGURE 23-1

IRON ORE PROCESSING PLANT
 Nashwauk, Minnesota
 PRELIMINARY PROCESS FLOW DIAGRAM
 SHEET 6

BARR PROJECT No.	23/31-286
CLIENT PROJECT No.	
DWG. No.	-
REV. No.	B