

Nemadji State Forest

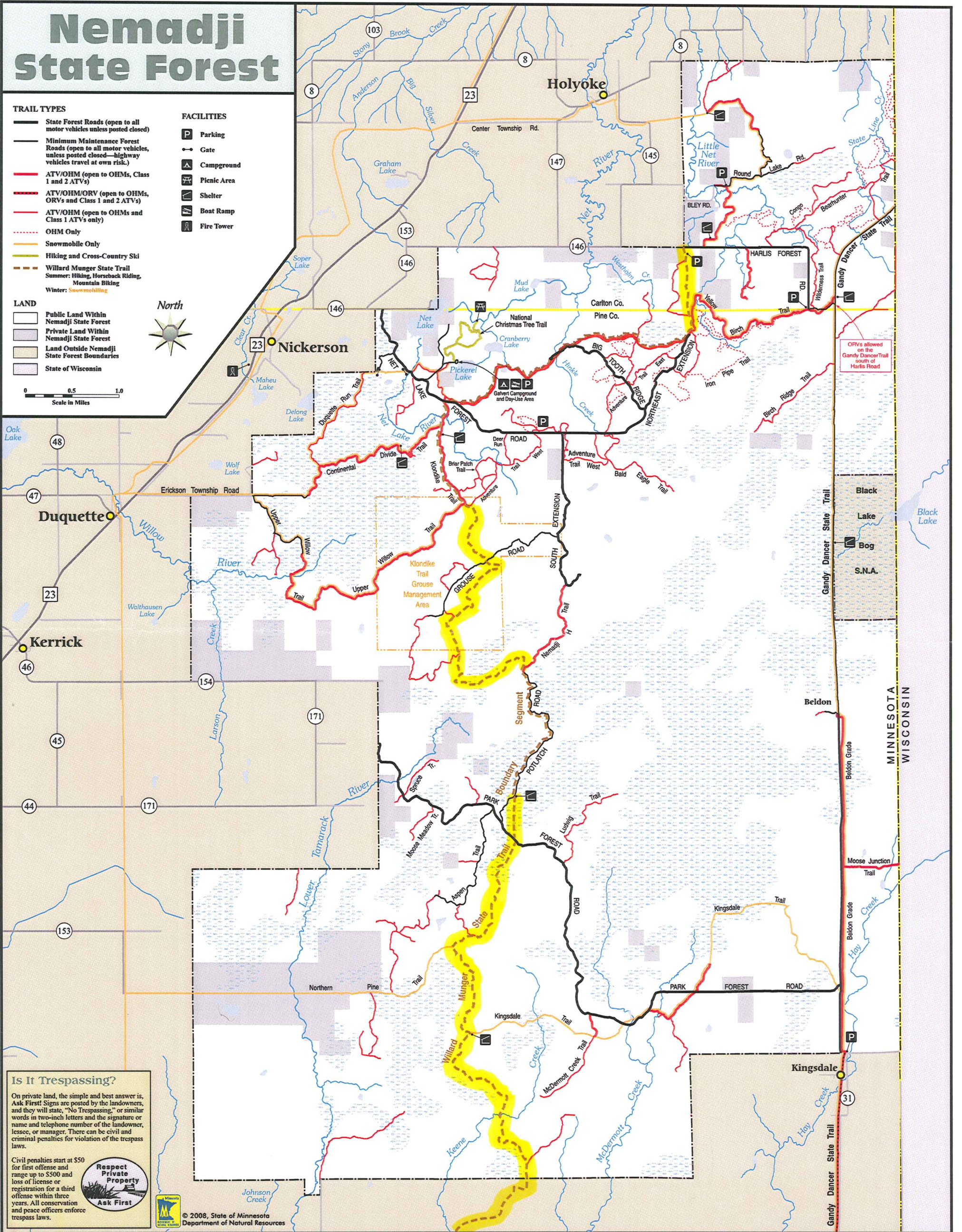
- TRAIL TYPES**
- State Forest Roads (open to all motor vehicles unless posted closed)
 - Minimum Maintenance Forest Roads (open to all motor vehicles, unless posted closed—highway vehicles travel at own risk.)
 - ATV/OHM (open to OHMs, Class 1 and 2 ATVs)
 - ATV/OHM/ORV (open to OHMs, ORVs and Class 1 and 2 ATVs)
 - ATV/OHM (open to OHMs and Class 1 ATVs only)
 - OHM Only
 - Snowmobile Only
 - Hiking and Cross-Country Ski
 - Willard Munger State Trail
Summer: Hiking, Horseback Riding, Mountain Biking
Winter: Snowmobiling

- FACILITIES**
- Parking
 - Gate
 - Campground
 - Picnic Area
 - Shelter
 - Boat Ramp
 - Fire Tower

- LAND**
- Public Land Within Nemadji State Forest
 - Private Land Within Nemadji State Forest
 - Land Outside Nemadji State Forest Boundaries
 - State of Wisconsin



0 0.5 1.0
Scale in Miles



Is It Trespassing?

On private land, the simple and best answer is, Ask First! Signs are posted by the landowners, and they will state, "No Trespassing," or similar words in two-inch letters and the signature or name and telephone number of the landowner, lessee, or manager. There can be civil and criminal penalties for violation of the trespass laws.

Civil penalties start at \$50 for first offense and range up to \$500 and loss of license or registration for a third offense within three years. All conservation and peace officers enforce trespass laws.



© 2008, State of Minnesota
Department of Natural Resources

Figure 4: Matthew Lourey Trail Project within Nemadji State Forest. (Project segments highlighted in yellow.)