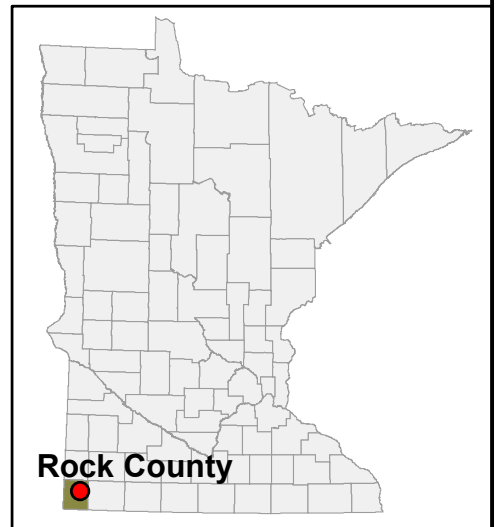


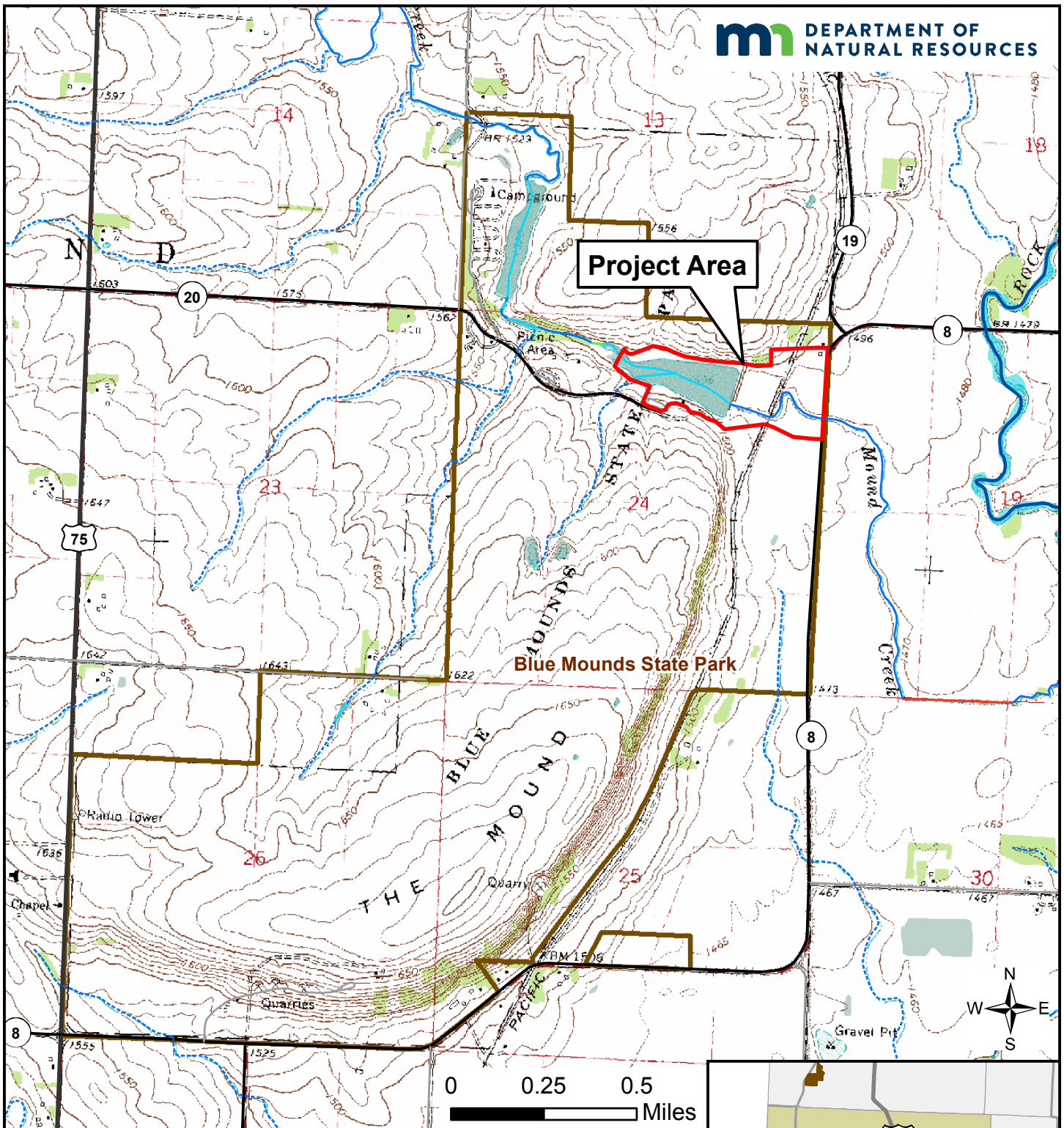
Figure 1. Lower Mound Lake Basin Restoration - Project Location

Legend

- ▮ Proposed Project Area
- ▮ State Park Boundary
- ~ Stream Centerline
- ▮ River Area
- ▮ *Shallow Lake



**Data Source: MN DNR Hydrological data, 1998, and does not represent current conditions affected by recent flood events. Figure created 8/10/2017.*



**Figure 2: Lower Mound Lake Basin Restoration -
Project Area Rock County, USGS 1:24,000**

Legend

- Project Area
- State Park Boundary

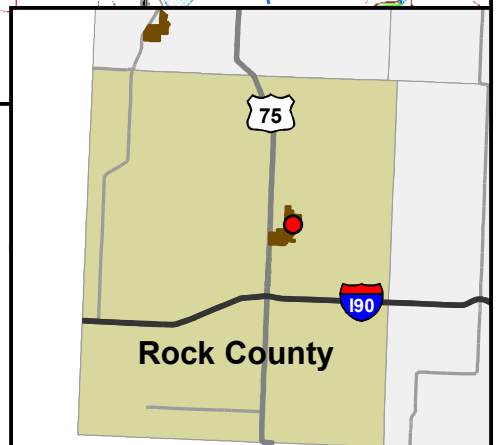
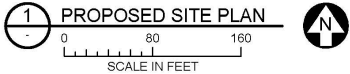
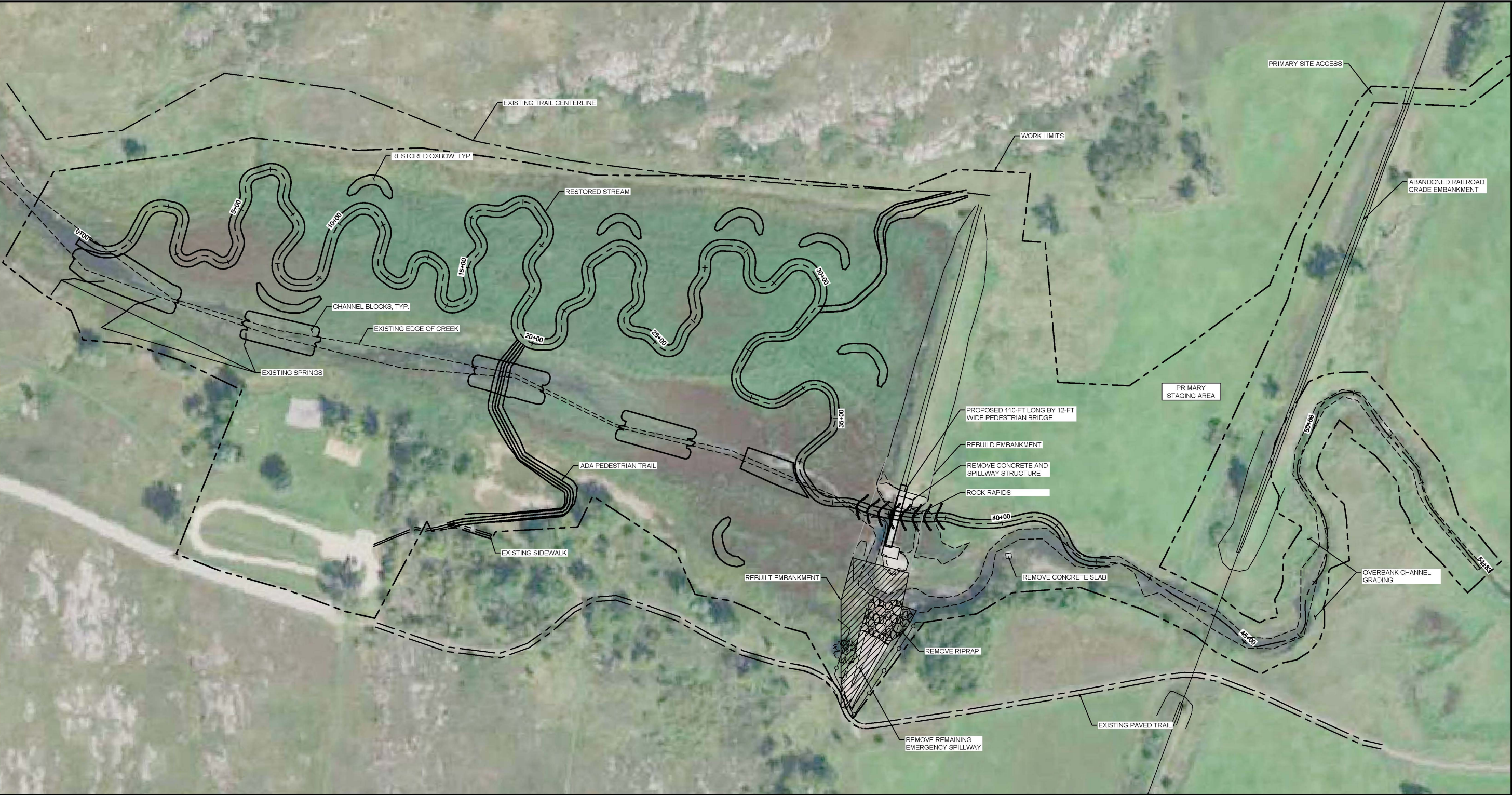


Figure 3. Lower Mound Lake Basin Restoration, Preliminary Design for Proposed Project.



PERMIT
REVIEW

©Copyright 2018, State of Minnesota, Department of Natural Resources



Project Office:
BARR ENGINEERING CO.
4300 MARKETPOINTE DRIVE
Suite 200
MINNEAPOLIS, MN 55435
Ph: 1-800-632-2277
Fax: (652) 832-2601
www.barr.com

I hereby certify that this plan, specification or report was prepared by me or under my direct supervision, and that I am a duly licensed professional engineer under the laws of the state of Minnesota.

Name: _____ License #: _____

Date: _____

Operations Services
Safety
Facilities
Materials
Equipment
Field Operations
Information Management

Lower Mound Lake Basin Restoration
Blue Mounds State Park
DNR Division of Parks & Trails

Rock County Near Luverne

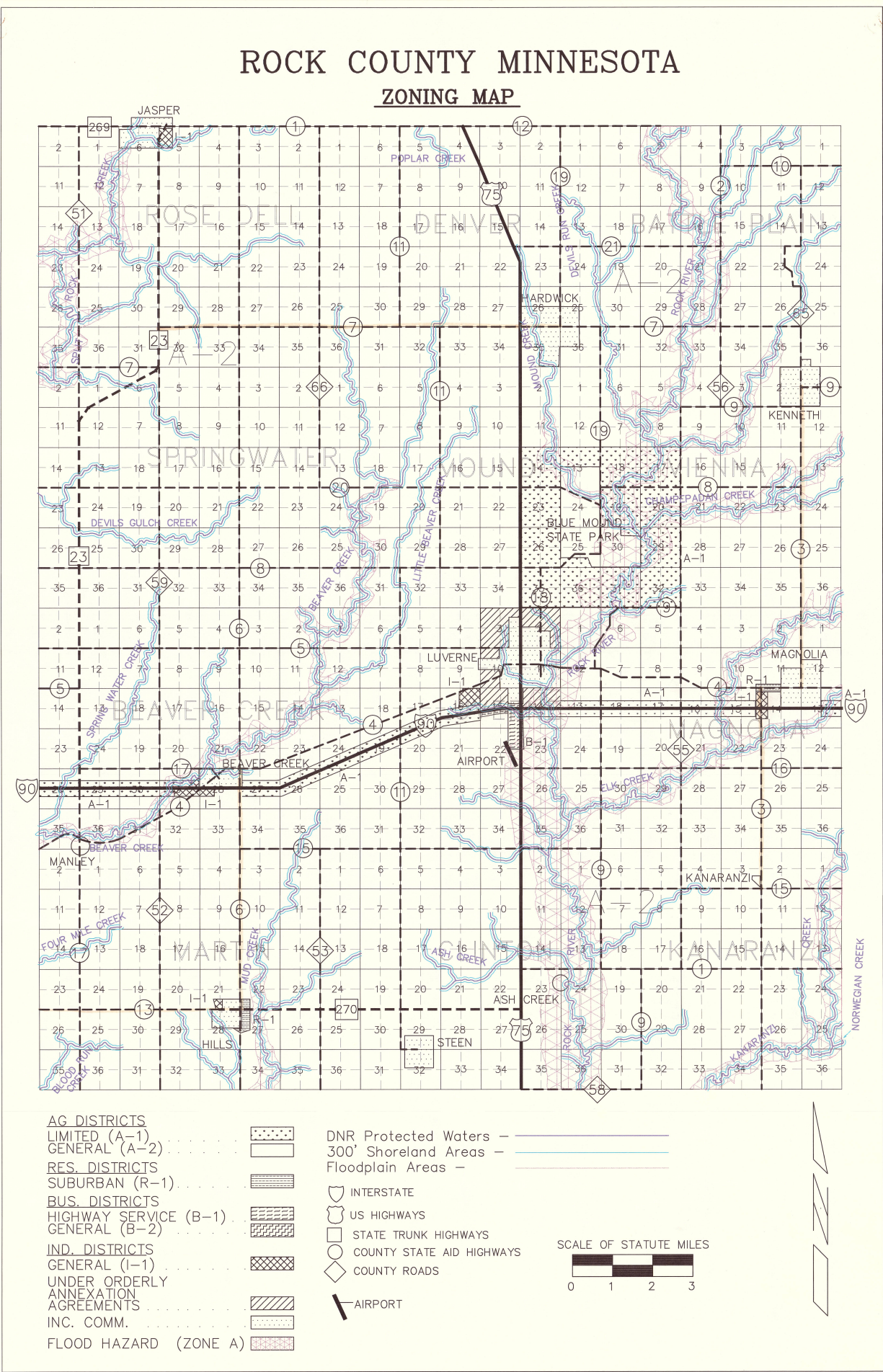
Section: 24 Township: 103 Range: 45

Revisions	
Date	By

Title: PROPOSED SITE PLAN			
Survey:	XX XX/XX	Designed:	XX XX/XX
Drawn:	XX XX/XX	Drawn:	XX XX/XX
Checked:	XX XX/XX	Checked:	XX XX/XX
Horz. datum:	NAD 83	Vert. datum:	NAVD 88

Sheet:	C-101
CC2:	
File #:	

Figure 4. Rock County Flood Hazard Boundary Map



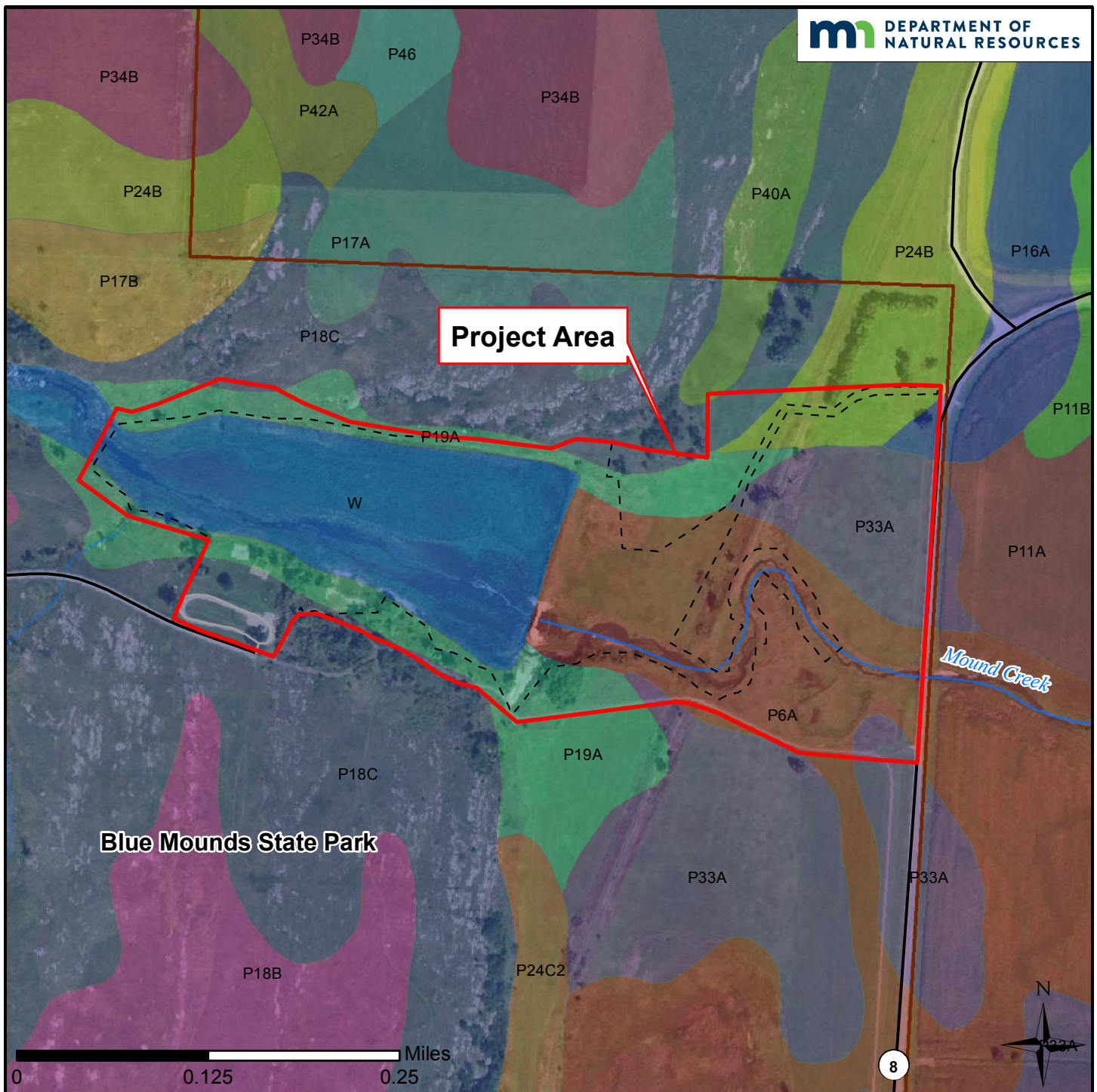


Figure 5. Lower Mound Lake Basin Restoration - NRCS Soil Units in Project Area

Legend

	Proposed Project Area	Soil Units*		P17A		P19A		P34B		P4A	
	Construction Limits		P11A		P17B		P24B		P40A		P6A
	State Park Boundary		P11B		P18B		P24C2		P42A		P7A
			P16A		P18C		P33A		P46		W

*Data Source: MN DNR; U.S. Department of Agriculture, Natural Resources Conservation Service, 2013. This data does not accurately represent current conditions affected by flood events from 2014. Figure updates 2/8/2018.

Document Name: BMSP_NRCSSoils

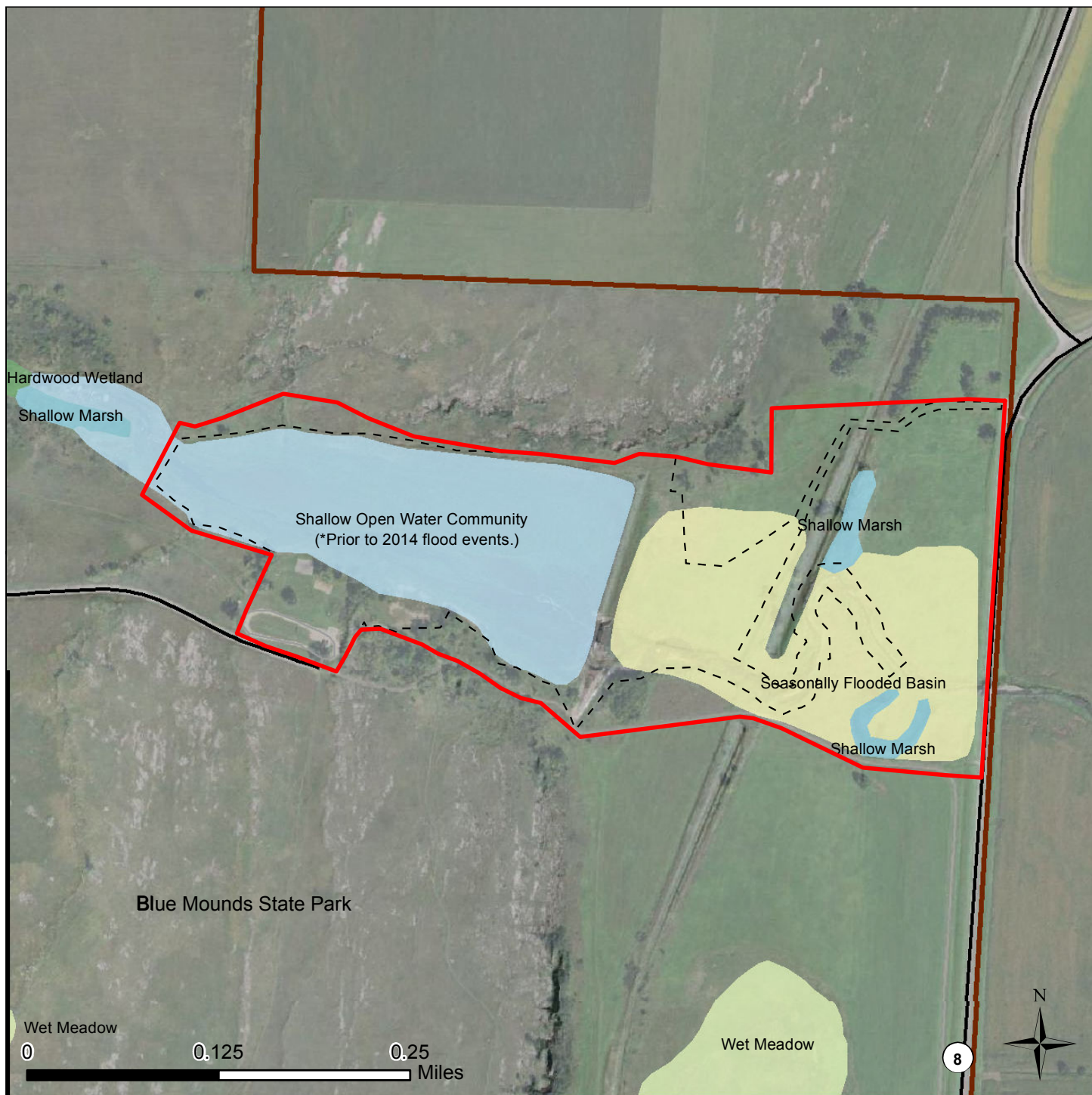


Figure 6: Lower Mound Lake Basin Restoration - NWI Circ. 39, Class 2009-2014

Legend

- | | | |
|-----------------------|--|-------------------------------------|
| Proposed Project Area | National Wetland Inventory (NWI Circ 39)* | 6 - Shrub Swamp |
| Construction Limits | 1 - Seasonally Flooded Basin or Flat | 7 - Wooded Swamp |
| State Park Boundary | 2 - Wet Meadow | 8 - Bogs |
| | 3 - Shallow Marsh | Municipal and Industrial Activities |
| | 4 - Deep Marsh | Riverine Systems |
| | 5 - Shallow Open Water | |

*NWI Data Source: MN DNR, 2015. Southern Minnesota data based on collected data from 2011. This data does not accurately represent current conditions affected by the flood events from 2014. Figure updated 2/8/2018.

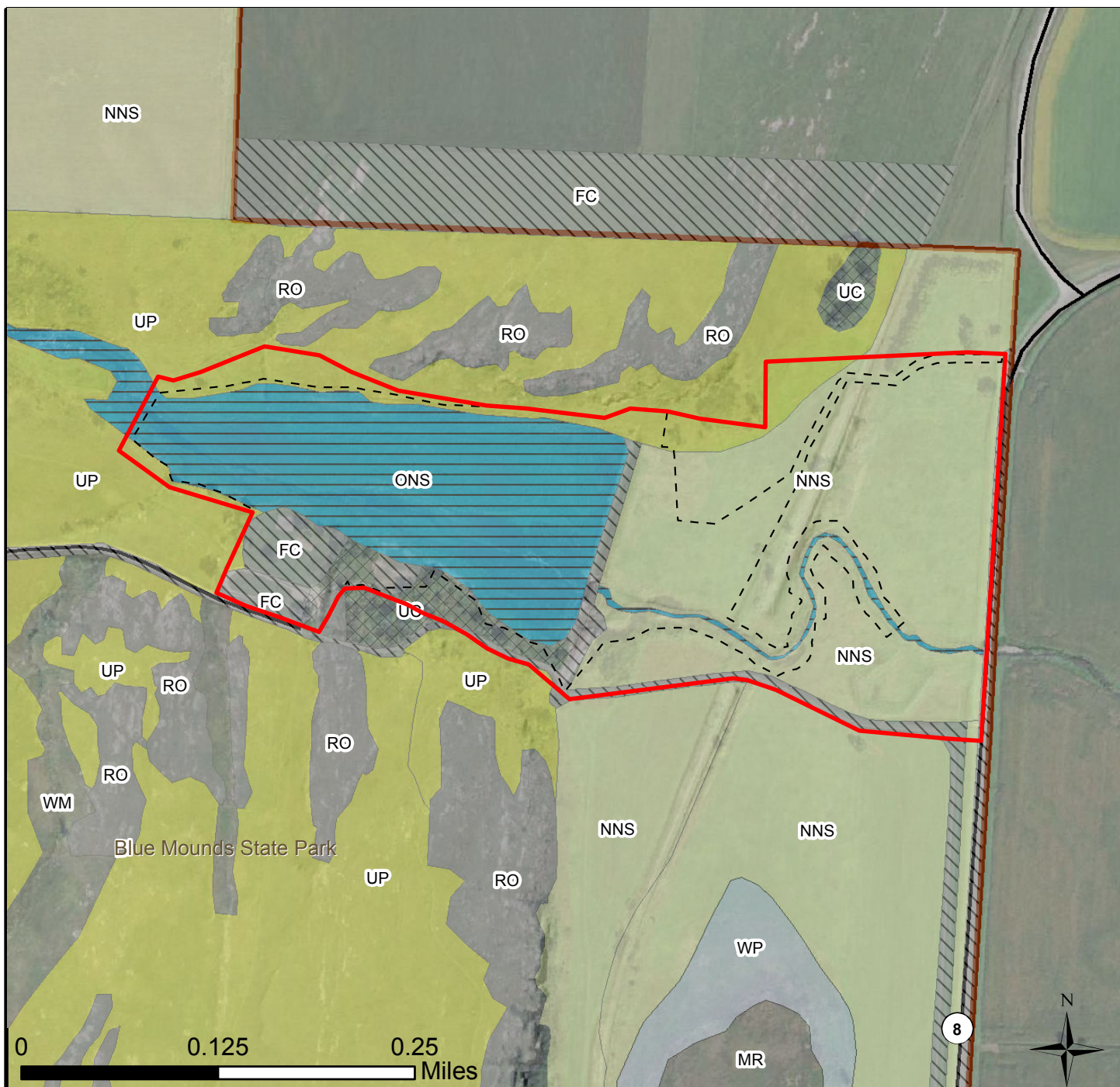


Figure 7: Lower Mound Lake Basin Restoration, Native Plant Communities (NPC) and Land Cover

Legend



Proposed Project Area



Construction Limits



State Park Boundary

DNR NPC and Land Cover*



Rock Outcrop System (RO)



Wetland Prairie System (WP)



Upland Prairie System (UP)



Other Natural System (ONS)



Non-Natural System (NNS)



Facilities System (FC)



Unclassified (UC)

*Data Source: MN DNR, 2014. This data does not accurately represent current conditions affected by the flood events from 2014. Figure updated: 2/8/2018.