

**Exhibit 1. USACE parcel information for the Lock and Dam 2 Protective Island Project Area.**





US Army Corps  
of Engineers®

X:\PROJECTS\UMR\_MVP(O&M)\Locks\_and\_Dams-117601\LD\_2-10\02\_LD2\_Feasibility\LD2\_GIS\island\_Footprint\_06\_21\_19\Maps - 02242020 - TWC

## Lock and Dam 2 Protective Island: Pre-Construction

0 800 1,600 2,400  
Feet

Base Image: USACE 2015 Natural Color



Exhibit 2. Lock and Dam 2 Protective Island Project Area pre-construction condition.

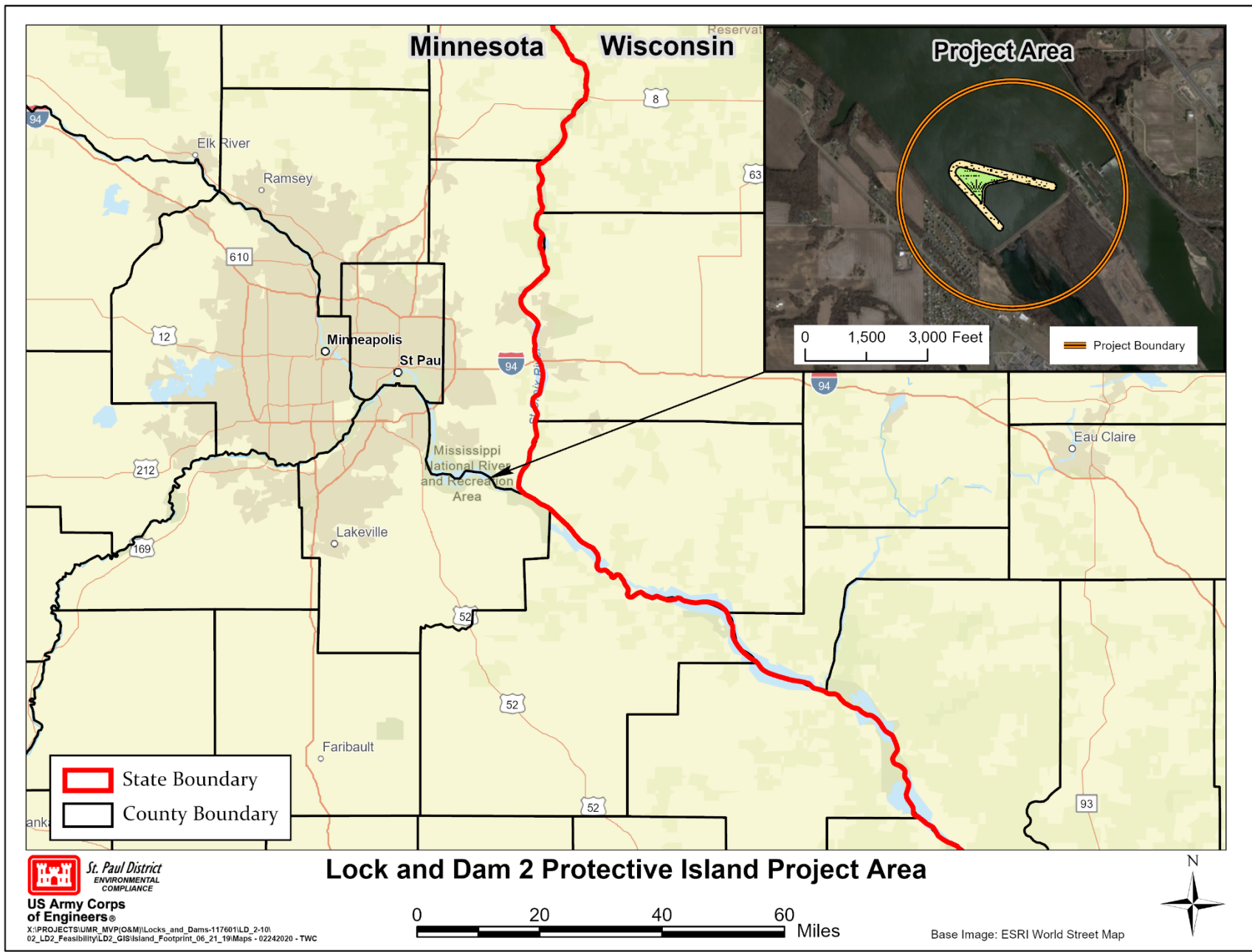


Exhibit 3. Lock and Dam 2 Protective Island Project vicinity map.



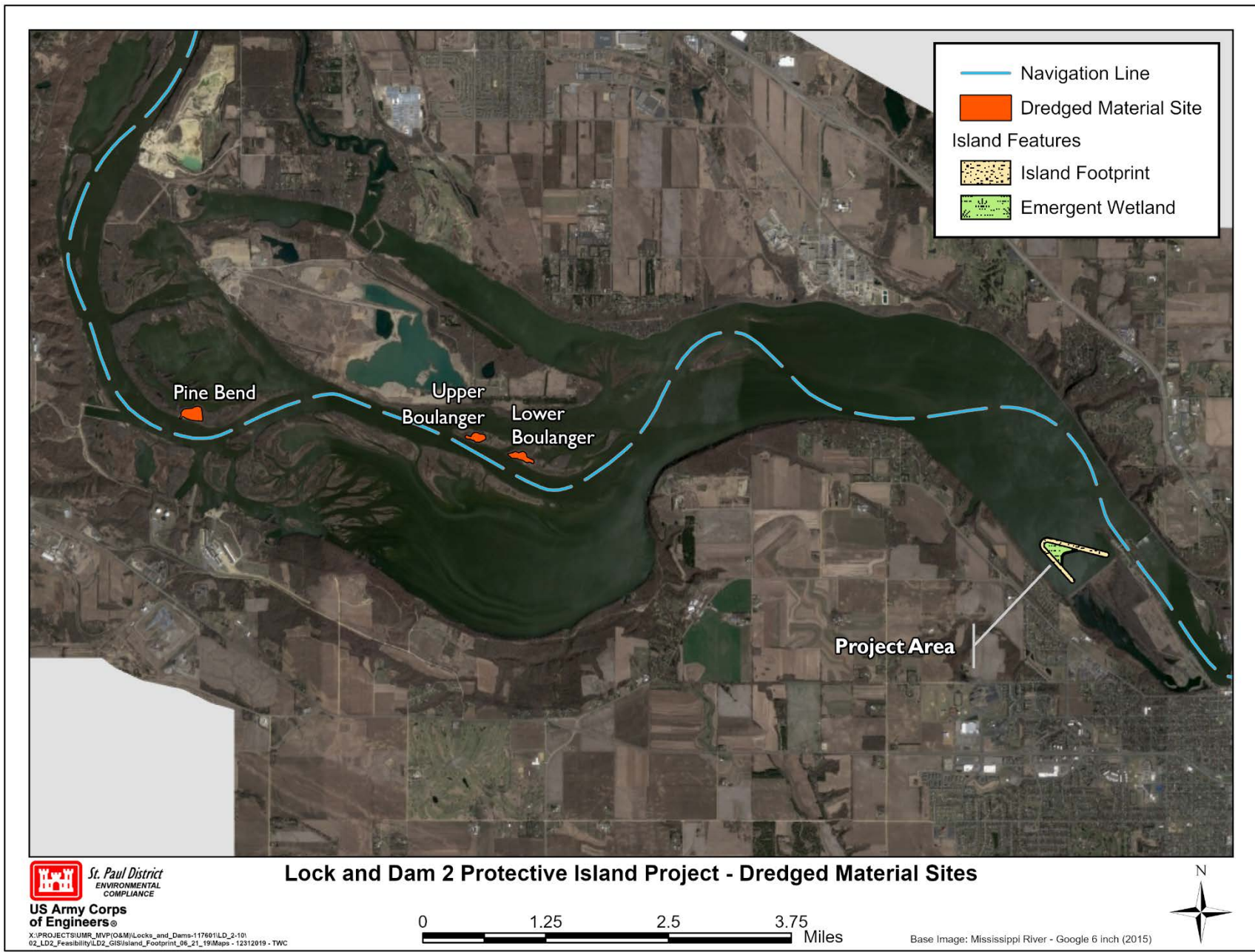
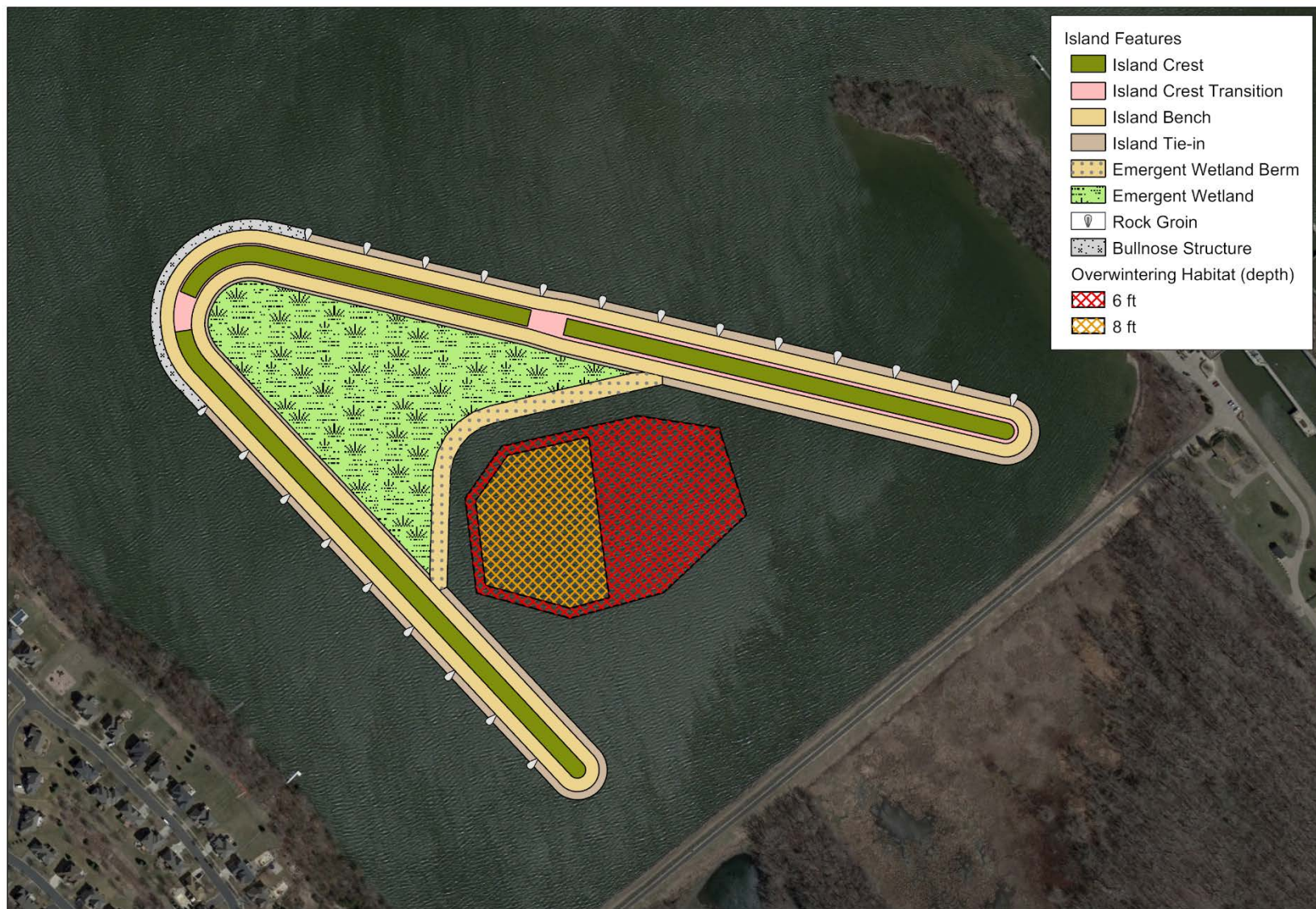


Exhibit 4. Locations of the dredged material placement sites that will be utilized to construct the protective island.





US Army Corps  
of Engineers®

X:\PROJECTS\UMR\_MVP(O&M)\Locks\_and\_Dams-117601\LD\_2-10\02\_LD2\_Feasibility\LD2\_GIS\Island\_Footprint\_06\_21\_19\Maps - 02052020 - TWC

## Lock and Dam 2 Protective Island - Project Features

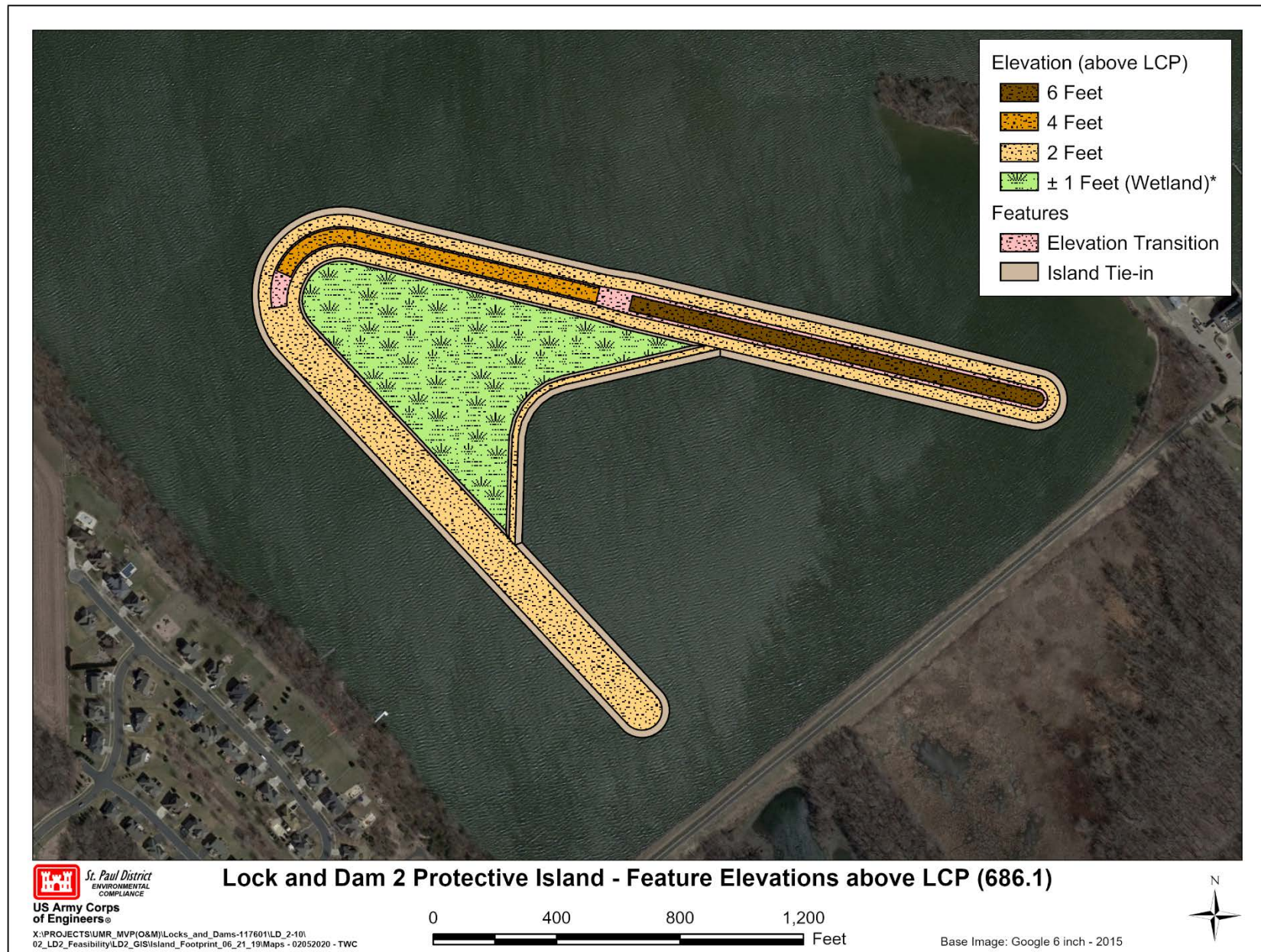
0 400 800 1,200  
Feet

Base Image: Google 6 inch - 2015



**Exhibit 5. Lock and Dam 2 Protective Island Project Proposed Alternative, including the different features to be incorporated.**





\* The elevation of the emergent wetland is set at 0.5 feet below LCP or an elevation 685.6 feet (NAVD 8).

**Exhibit 6. Lock and Dam 2 Protective Island Project proposed elevations and transition zones.**





St. Paul District  
ENVIRONMENTAL  
PLANNING  
US Army Corps  
of Engineers®

X:\PROJECTS\UMR\_MVP(O&M)\Locks\_and\_Dams-117601\LD\_2-10\02\_LD2\_Feasibility\LD2\_GIS\Island\_Footprint\_06\_21\_19\Maps - 02052020 - TWC

## Lock and Dam 2 Protective Island - Vegetation Plan

0 400 800 1,200  
Feet

Base Image: Google 6 inch - 2015



**Exhibit 7. Lock and Dam 2 Protective Island Project proposed vegetation areas and vegetation types.**





St. Paul District  
ENVIRONMENTAL  
PLANNING  
US Army Corps  
of Engineers®

X:\PROJECTS\UMR\_MVP(O&M)\Locks\_and\_Dams-117601\LD\_2-10\02\_LD2\_Feasibility\LD2\_GIS\Island\_Footprint\_06\_21\_19\Maps - 02042020 - TWC

### Lock and Dam 2 Protective Island - Material Composition

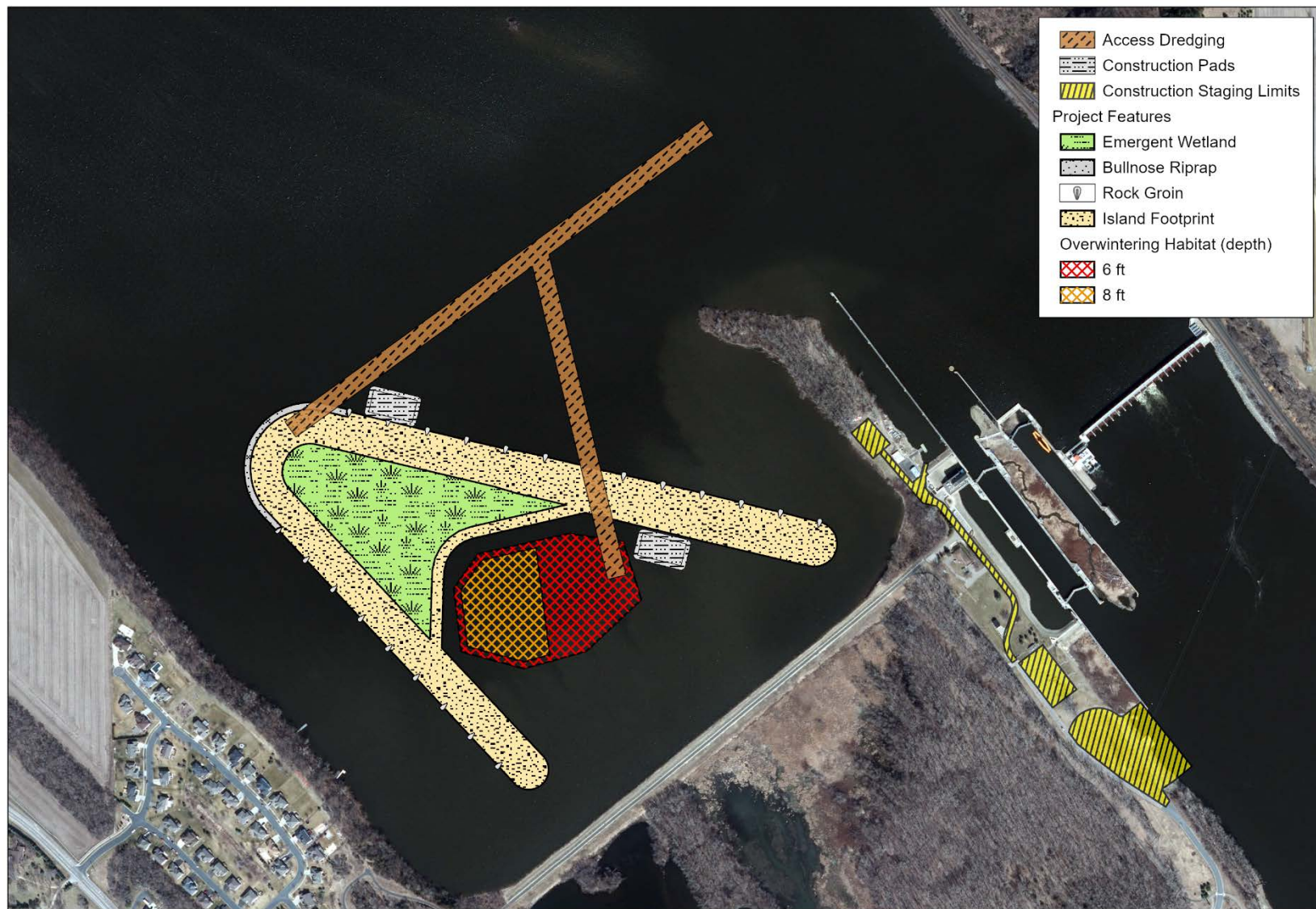
0 400 800 1,200  
Feet

Base Image: Google 6 inch - 2015



**Exhibit 8. Lock and Dam 2 Protective Island Project material composition.**






**St. Paul District**  
 ENVIRONMENTAL  
 COMPLIANCE  
**US Army Corps**  
 of Engineers®

X:\PROJECTS\UMR\_MVP(O&M)\Locks\_and\_Dams\117601\LD\_2-10\02\_LD2\_Feasibility\LD2\_GIS\Island\_Footprint\_06\_21\_19\Maps - 02242020 - TWC

### Lock and Dam 2 Protective Island - Constructability

0 600 1,200 1,800 Feet

Base Image: USACE 2015 Natural Color



**Exhibit 9. Lock and Dam 2 Protective Island Project constructability features.**





St. Paul District  
ENVIRONMENTAL  
COMPLIANCE  
US Army Corps  
of Engineers®

X:\PROJECTS\UMR\_MVP(O&M)\Locks\_and\_Dams-117601\LD\_2-10\02\_LD2\_Feasibility\LD2\_GIS\Island\_Footprint\_06\_21\_19\Maps - 02062020 - TWC

## Lock and Dam 2 Protective Island Project - Alternatives Considered

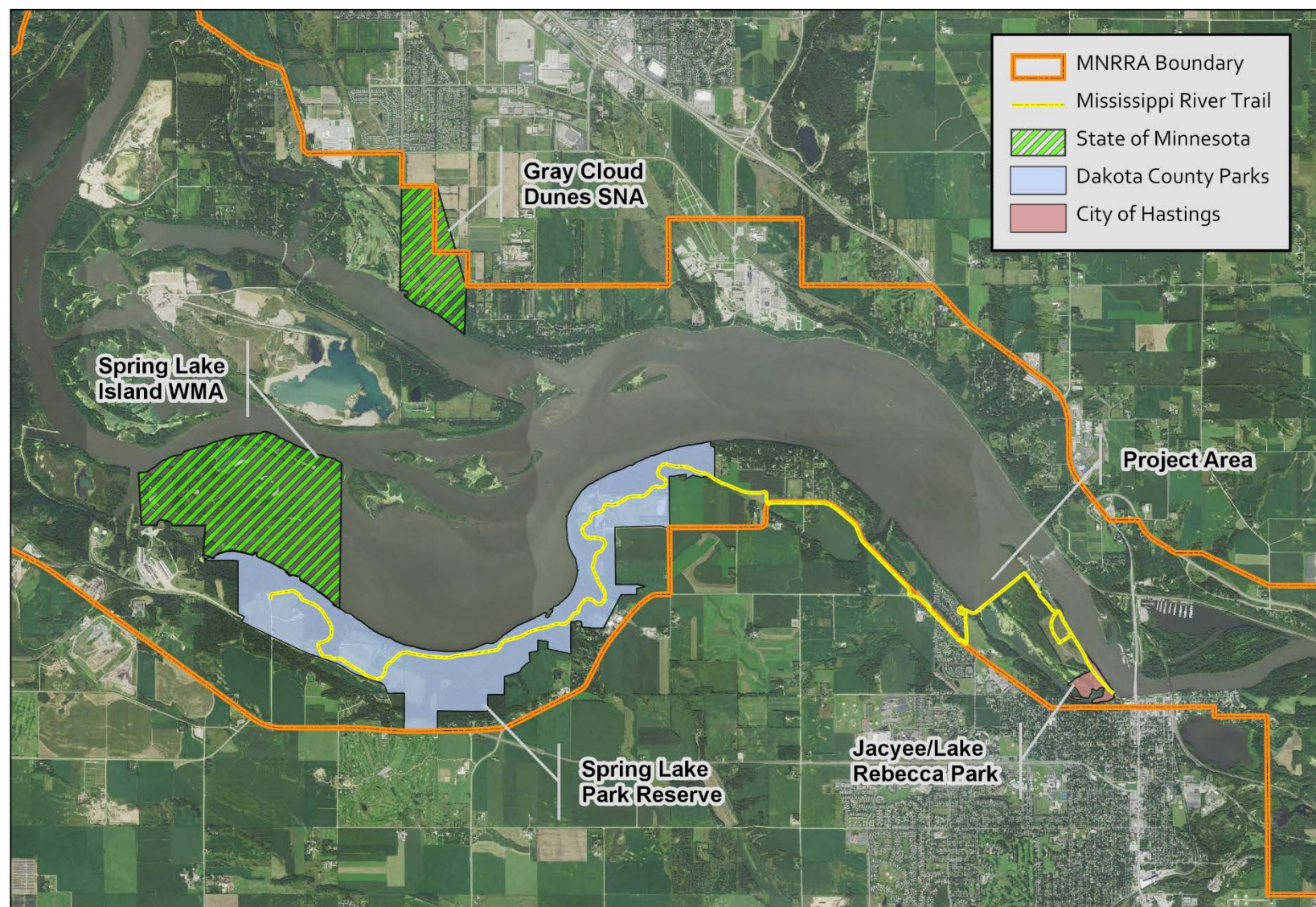
0 400 800 1,200 Feet

Base Image: Google 6 inch - 2015



**Exhibit 10. Alternatives considered for the Lock and Dam 2 Protective Island Project.**





**US Army Corps  
of Engineers®**

X:\PROJECTS\IUMR\_MVP\O&M\Locks\_and\_Dams-11760\LD\_2-101  
02\_LD2\_Feasibility\LD2\_GIS\Island\_Footprint\_05\_21\_19\Mapa - 09262019 - TWC

*St. Paul District*  
ENVIRONMENTAL  
COMPLIANCE

## Lock and Dam 2 Protective Island Project - Area Parks

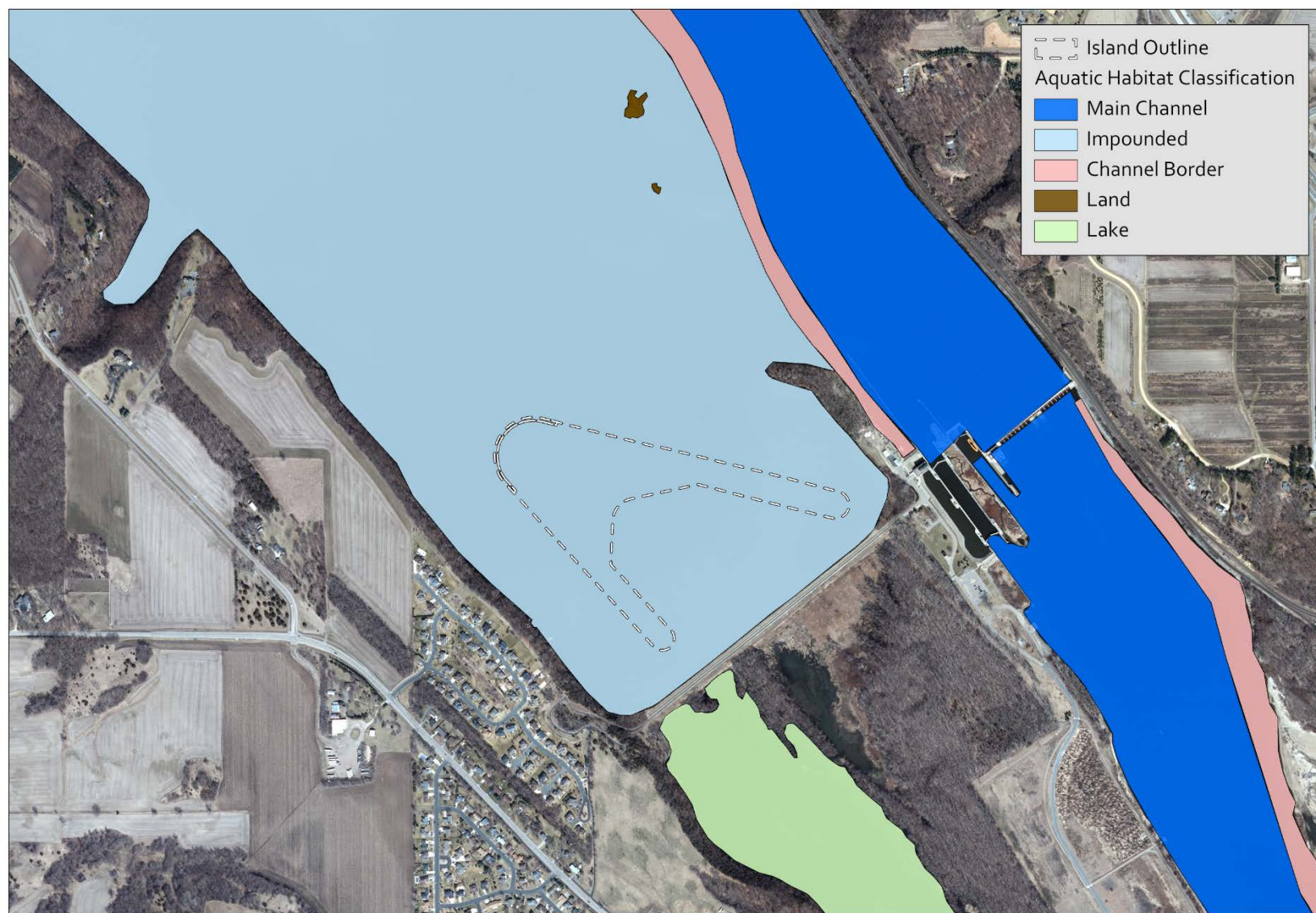
0 1 2 3 Miles

Base Image: Minnesota FSA - 2017



**Exhibit 11. Recreation opportunities around the Lock and Dam 2 Protective Island Project Area.**





X:\PROJECTS\UMR\_MVP(O&M)\Locks\_and\_Dams-117601\LD\_2-10\02\_LD2\_Feasibility\LD2\_GIS\Island\_Footprint\_06\_21\_19\Maps - 09262019 - TWC

## Lock and Dam 2 Protective Island - Aquatic Habitat Classifications

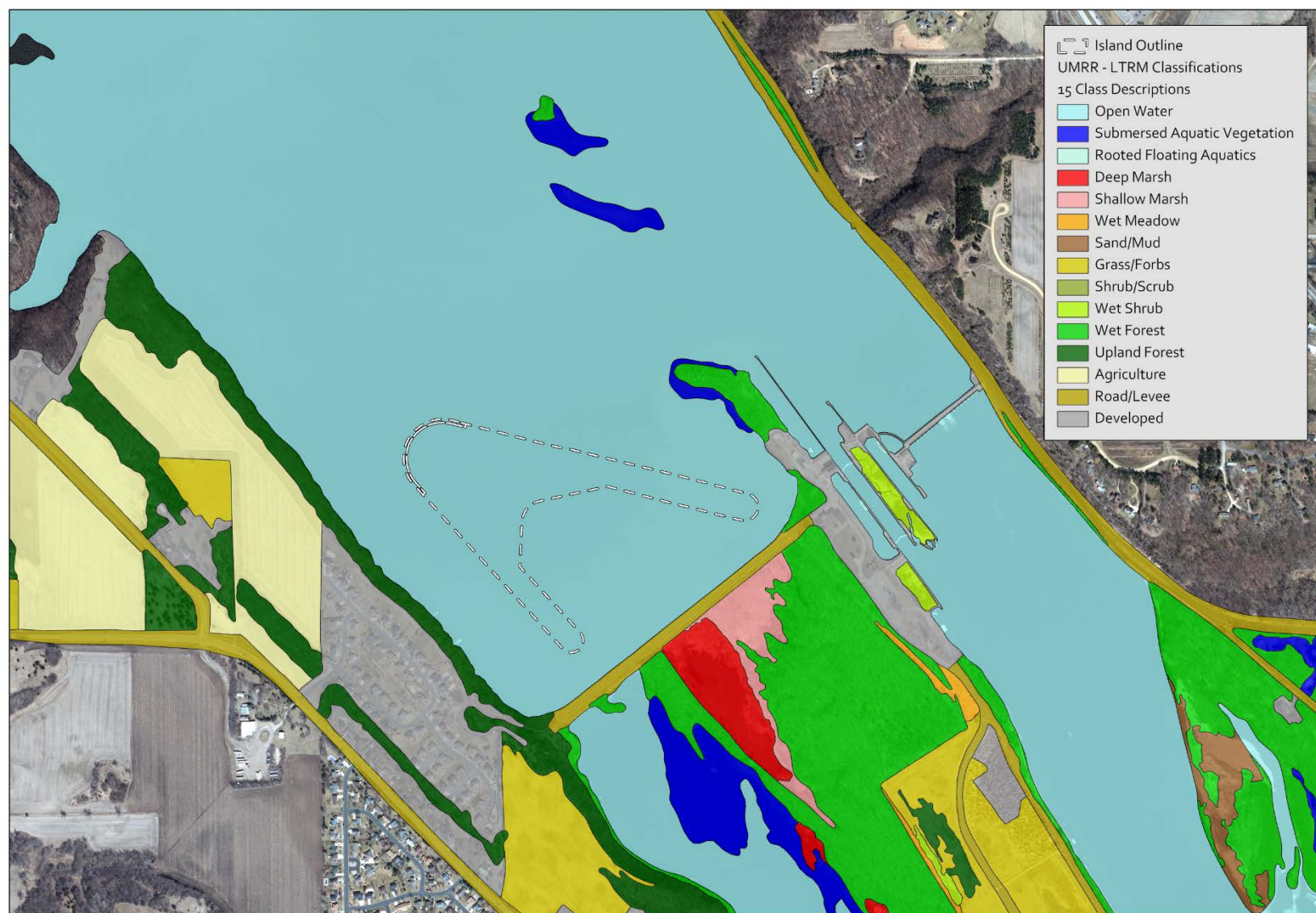
0 1,000 2,000 3,000  
Feet

Base Image: USACE 2015 Natural Color



**Exhibit 12. Aquatic habitat classification of the Lock and Dam 2 Protective Island Project Area.**





US Army Corps  
of Engineers®

X:\PROJECTS\UMR\_MVP(O&M)\Locks\_and\_Dams-117601\LD\_2-10\02\_LD2\_Feasibility\LD2\_GIS\Island\_Footprint\_06\_21\_19\Maps - 09262019 - TWC

## Lock and Dam 2 Protective Island - UMRR LTRM Classifications

0 1,000 2,000 3,000 Feet

Base Image: USACE 2015 Natural Color



**Exhibit 13. UMRR LTRM classifications of the Lock and Dam 2 Protective Island Project Area.**





Exhibit 14. Area of interest for the NRCS WSS tool.



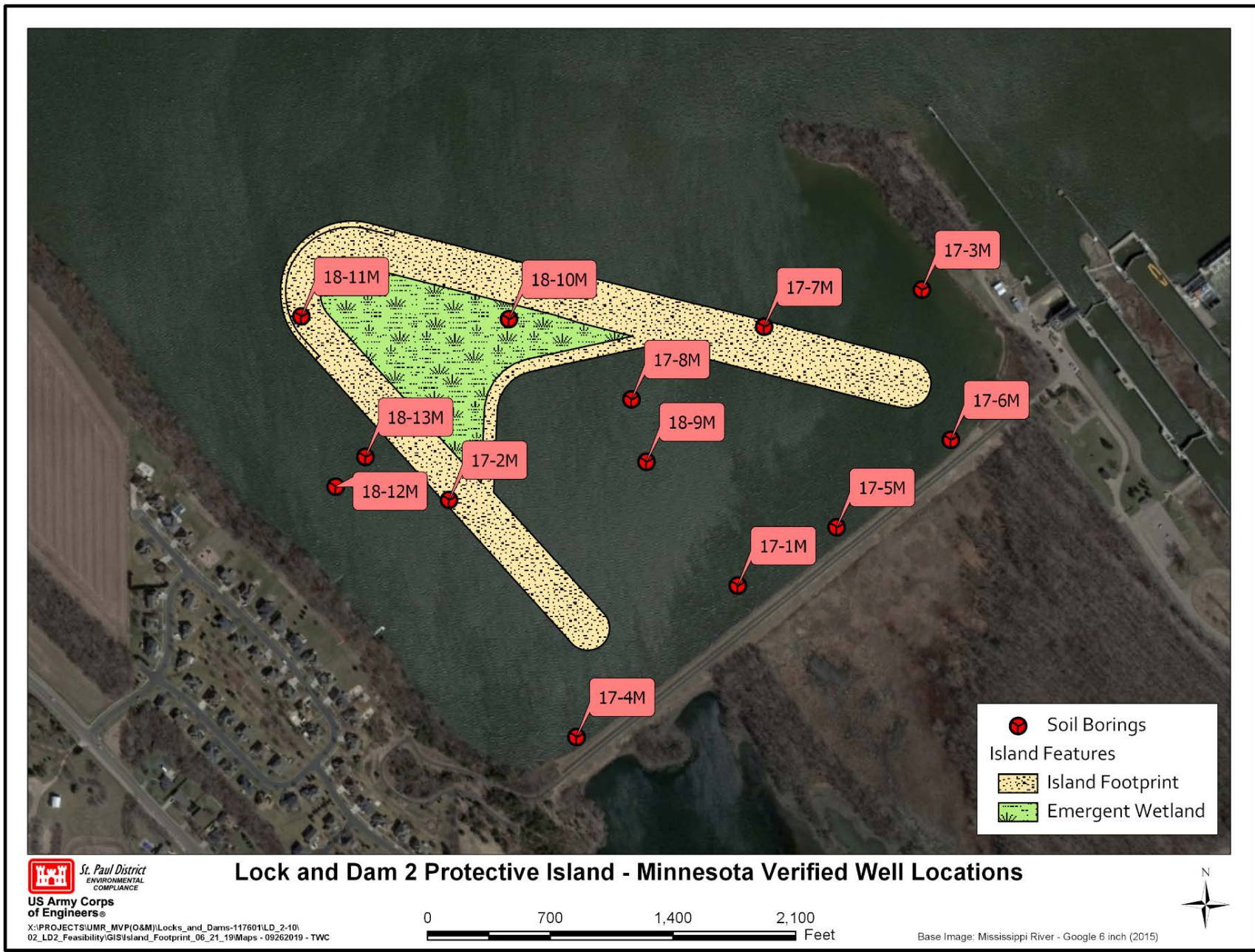


Exhibit 15. Soil boring locations for the Lock and Dam 2 Protective Island Project Area.



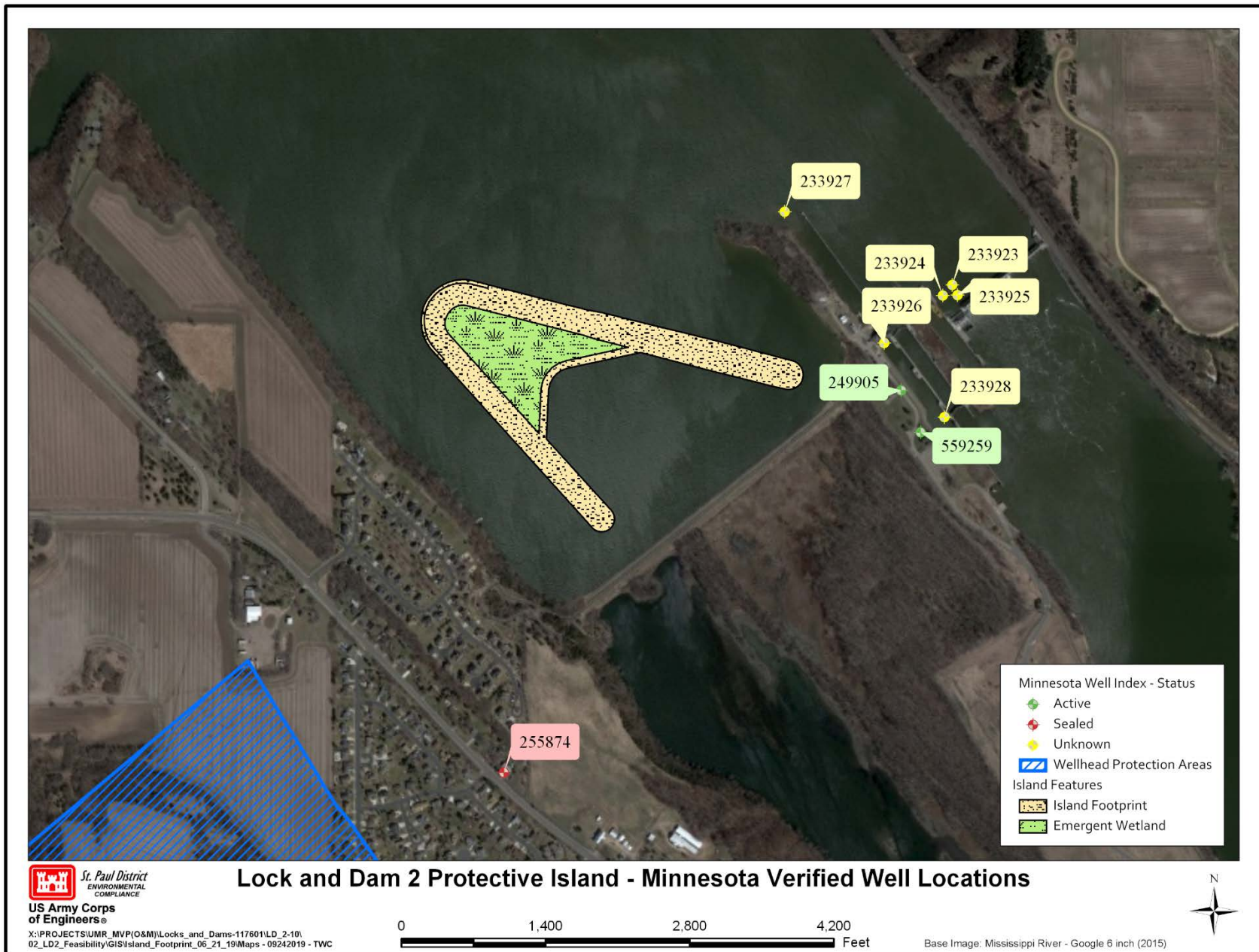
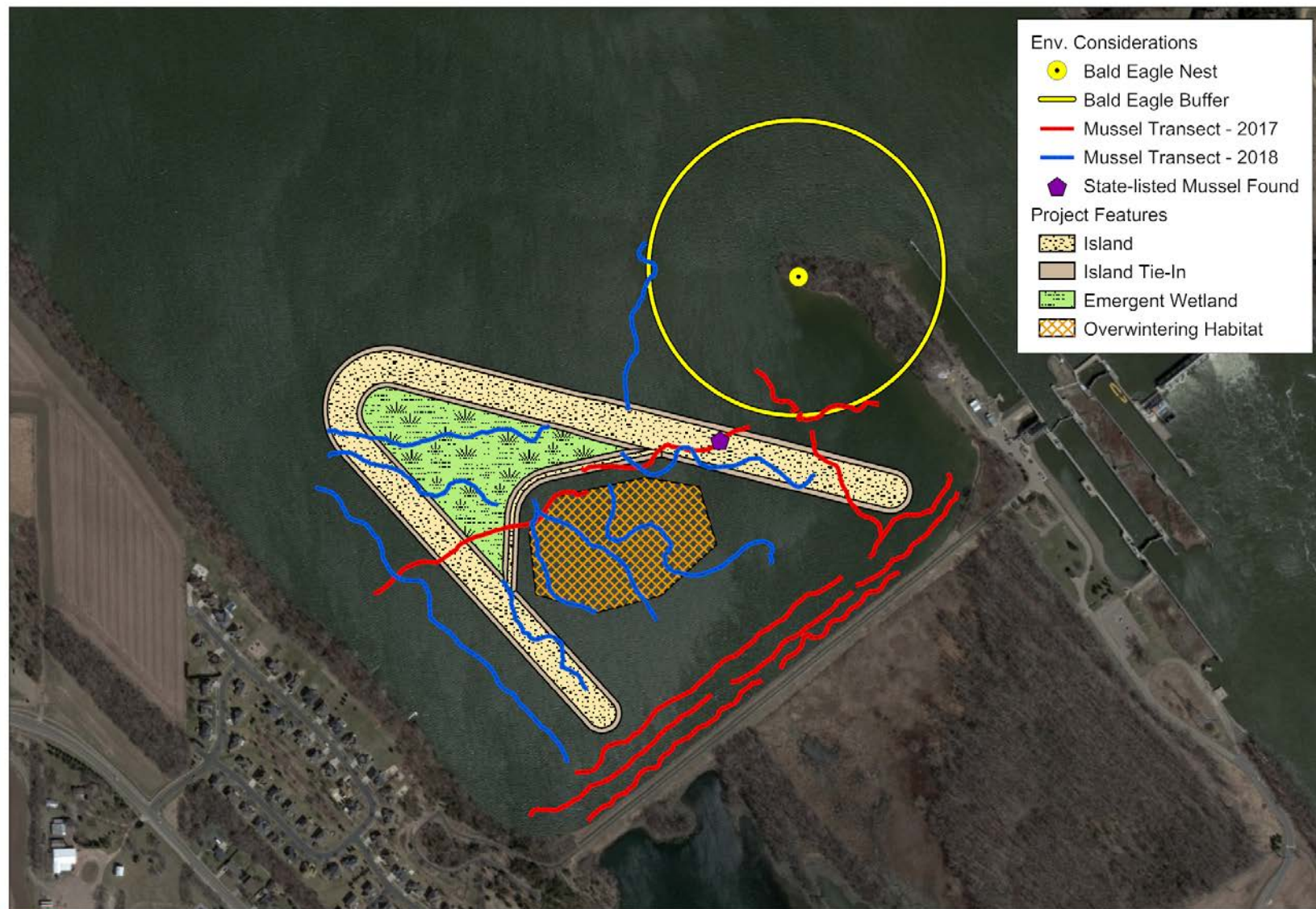


Exhibit 16. Minnesota verified wells near the Lock and Dam 2 Protective Island Project.






**St. Paul District**  
 ENVIRONMENTAL  
 PLANNING  
**US Army Corps**  
 of Engineers®

X:\PROJECTS\UMR\_MVP(O&M)\Locks\_and\_Dams-117601\LD\_2-10\02\_LD2\_Feasibility\LD2\_GIS\Island\_Footprint\_06\_21\_19\Maps - 02112020 - TWC

## Lock and Dam 2 Protective Island - Environmental Considerations

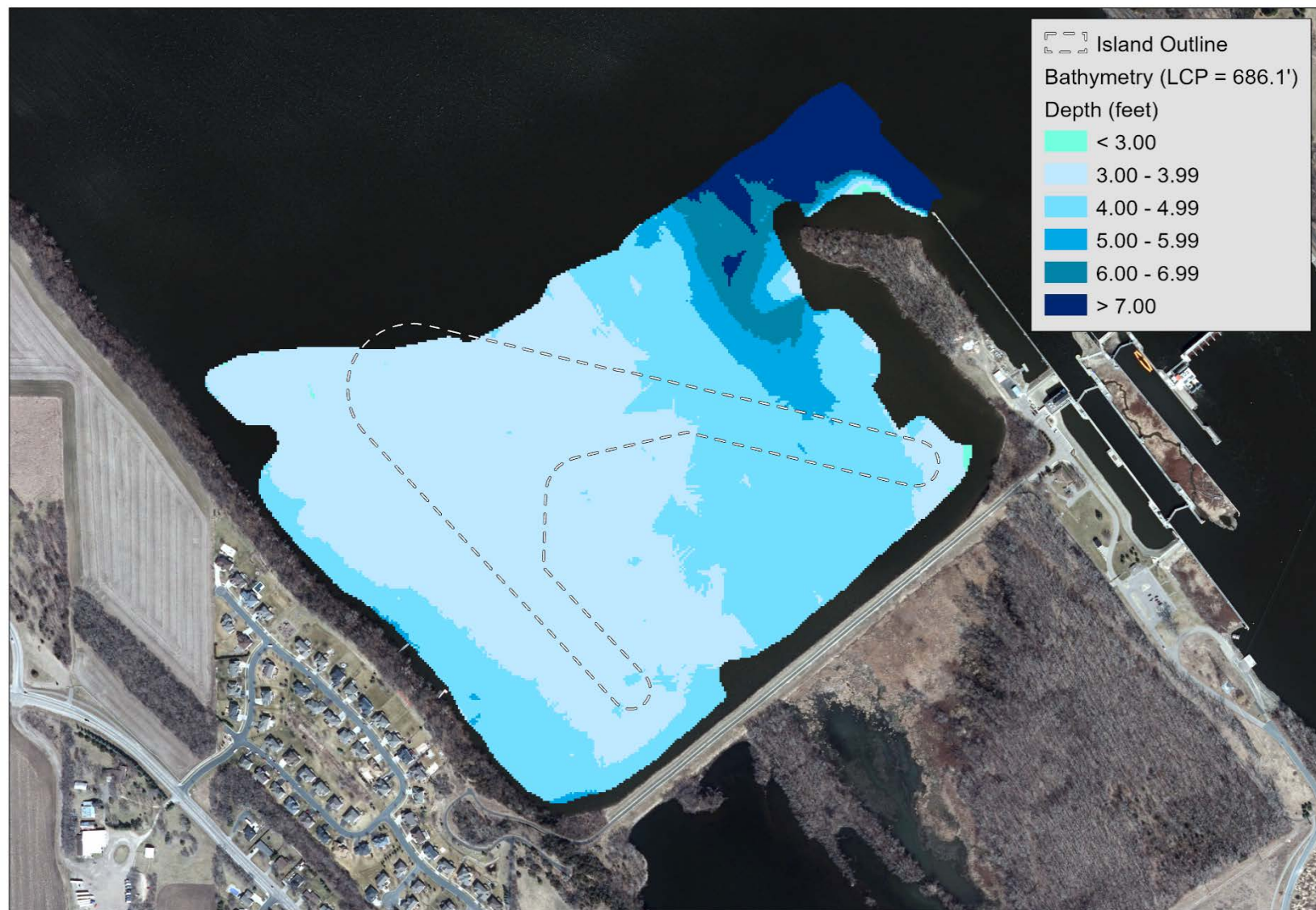
0 600 1,200 1,800 Feet

Base Image: Google 6 inch - 2015



**Exhibit 17. Environmental considerations for the Lock and Dam 2 Protective Island Project.**






**St. Paul District**  
 ENVIRONMENTAL  
 PLANNING  
**US Army Corps**  
 of Engineers®

X:\PROJECTS\UMR\_MVP(O&M)\Locks\_and\_Dams-117601\LD\_2-10\02\_LD2\_Feasibility\LD2\_GIS\Island\_Footprint\_06\_21\_19\Maps - 01162020 - TWC

### Lock and Dam 2 Protective Island - Bathymetry (NAVD 88)

0 600 1,200 1,800 Feet

Base Image: USACE 2015 Natural Color



**Exhibit 18. Bathymetry of the upstream portion of the Lock and Dam 2 Protective Island Project Area.**