

# Figures

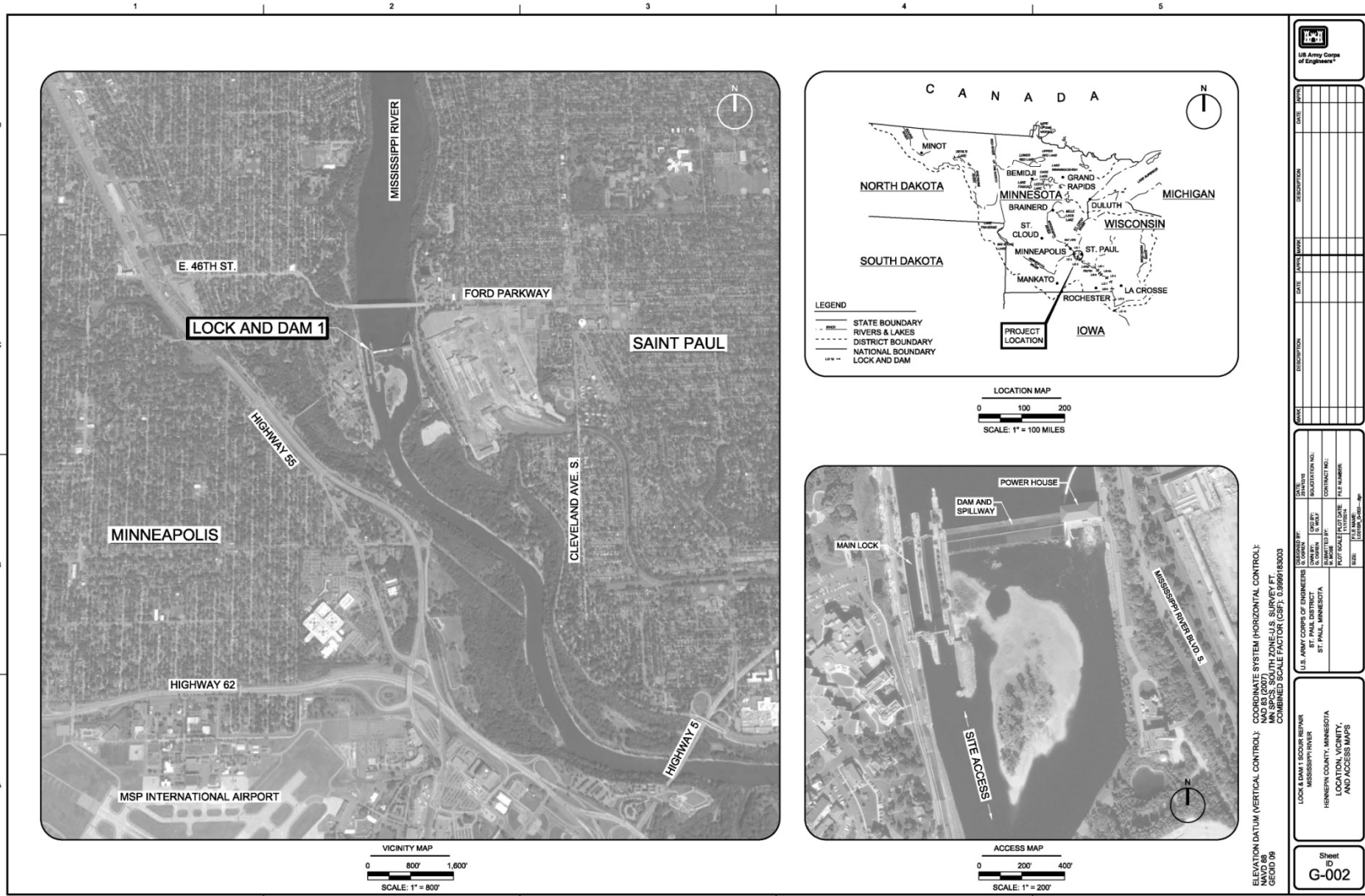


Figure 1.

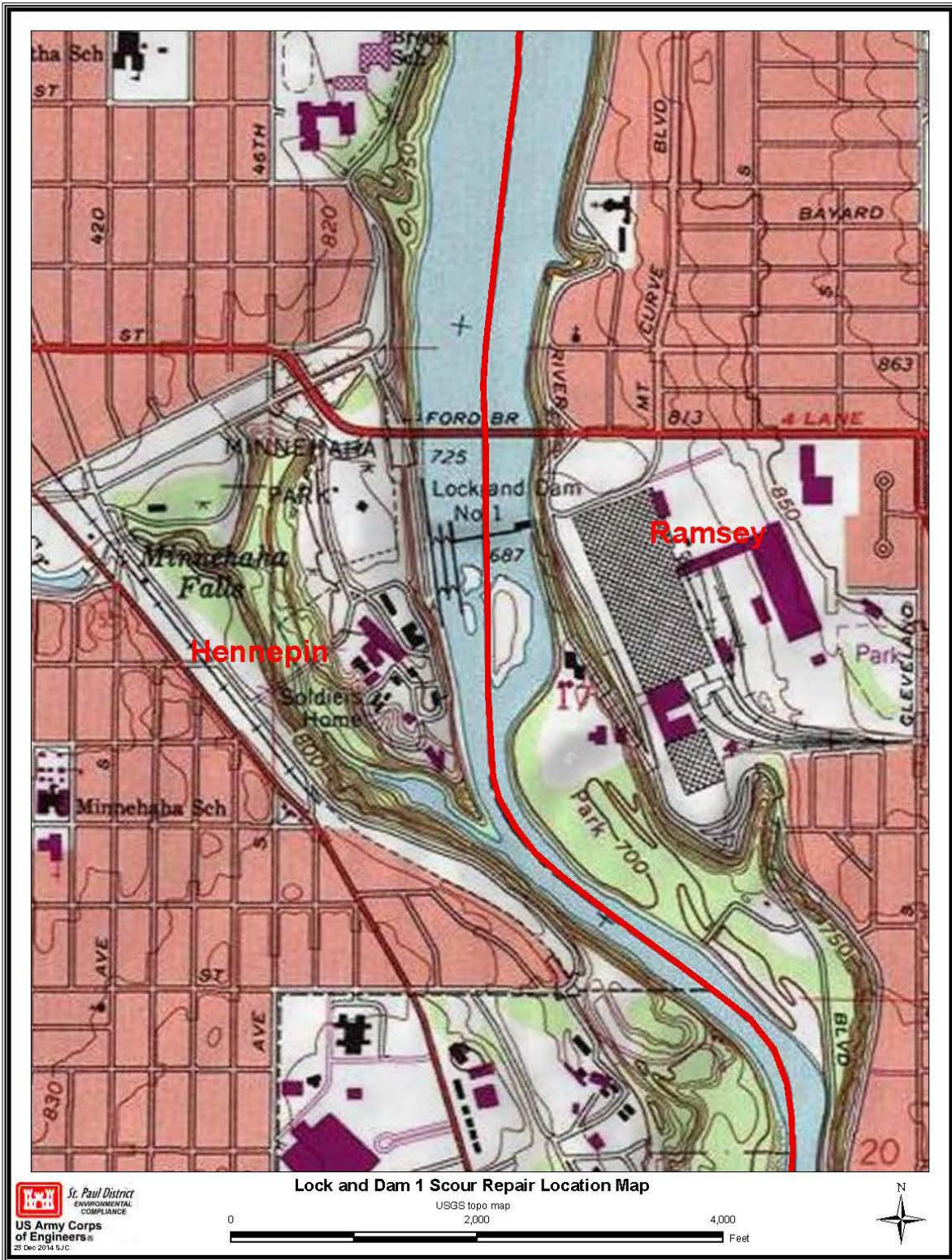


Lock and Dam 1  
Minneapolis, MN

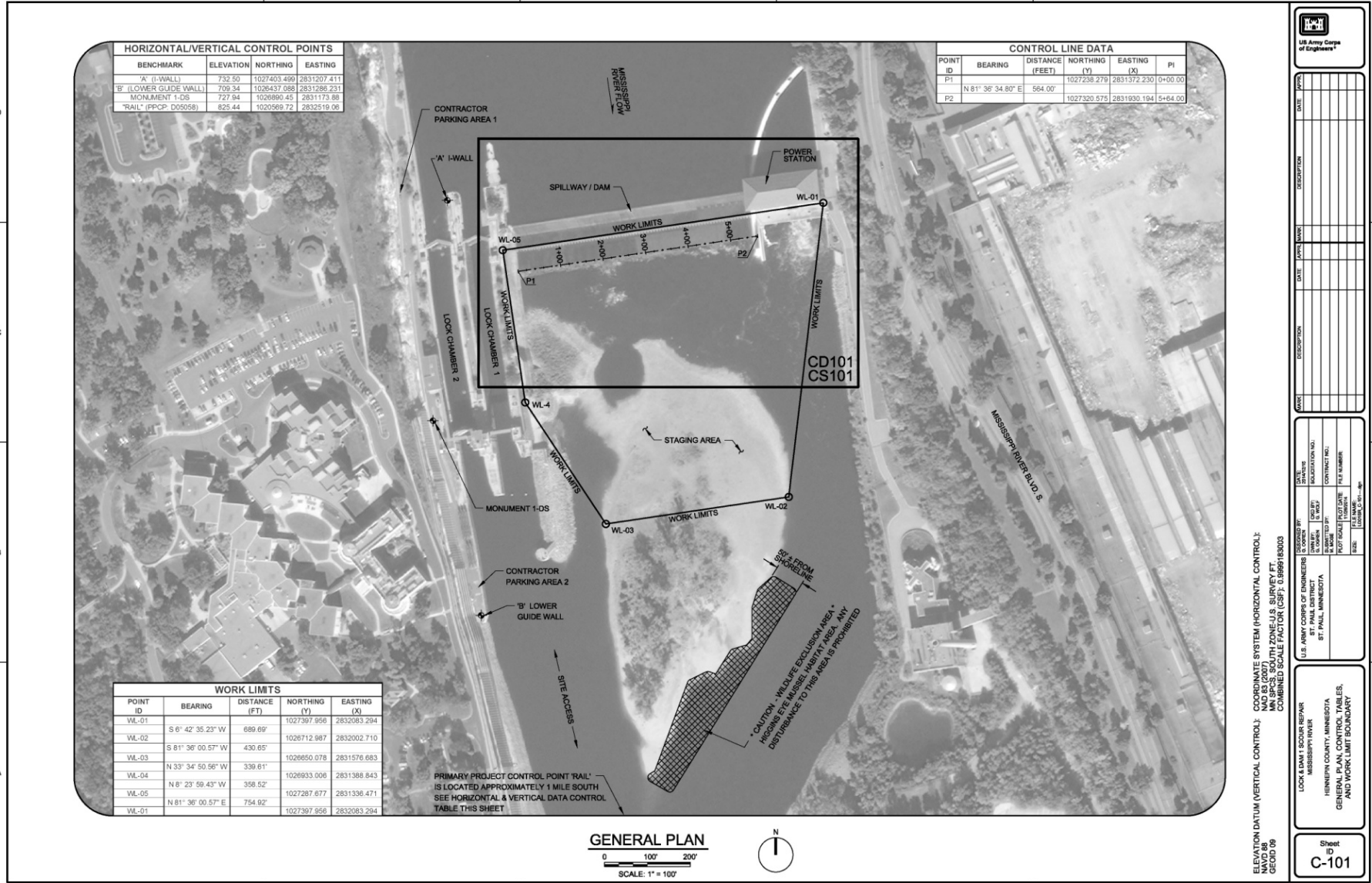
Location of proposed  
construction

Figure 1a.





**Figure 1b. USGS Topo Map**



HORIZONTAL/VERTICAL CONTROL POINTS			
BENCHMARK	ELEVATION	NORTHING	EASTING
'A' (I-WALL)	732.50	1027403.496	2831207.411
'B' (LOWER GUIDE WALL)	709.34	1026437.086	2831286.231
MONUMENT 1-OS	727.94	1026890.451	2831173.88
'RAIL' (PPCP: D05058)	825.44	1020569.72	2832519.06

CONTROL LINE DATA					
POINT ID	BEARING	DISTANCE (FEET)	NORTHING (Y)	EASTING (X)	PI
P1			1027238.276	2831372.230	0+00.00
P2	N 81° 36' 34.80" E	564.00'	1027320.675	2831930.184	5+64.00

WORK LIMITS					
POINT ID	BEARING	DISTANCE (FT)	NORTHING (Y)	EASTING (X)	
WL-01			1027397.956	2832063.294	
WL-02	S 6° 42' 35.23" W	689.69'	1026712.687	2832002.710	
WL-03	S 81° 36' 00.57" W	430.65'	1026650.078	2831576.683	
WL-04	N 33° 34' 50.56" W	339.61'	1026933.006	2831388.843	
WL-05	N 8° 23' 59.43" W	358.52'	1027287.677	2831336.471	
WL-01	N 81° 36' 00.57" E	754.92'	1027397.956	2832063.294	

PRIMARY PROJECT CONTROL POINT 'RAIL' IS LOCATED APPROXIMATELY 1 MILE SOUTH SEE HORIZONTAL & VERTICAL DATA CONTROL TABLE THIS SHEET

**GENERAL PLAN**  
 0 100' 200'  
 SCALE: 1" = 100'



ELEVATION DATUM (VERTICAL CONTROL): CGRS84 NAD 83 (2011)  
 NAD 83 (2011)  
 MN SP-S SOUTH ZONE U.S. SURVEY FT.  
 COMBINED SCALE FACTOR (CSF): 0.9999 60003

DATE	BY	DESCRIPTION

LOCK AND DAM SCOUR REPAIR  
 MISSISSIPPI RIVER  
 HENNING COUNTY, MINNESOTA  
 GENERAL PLAN, CONTROL TABLES,  
 AND WORK LIMIT BOUNDARY

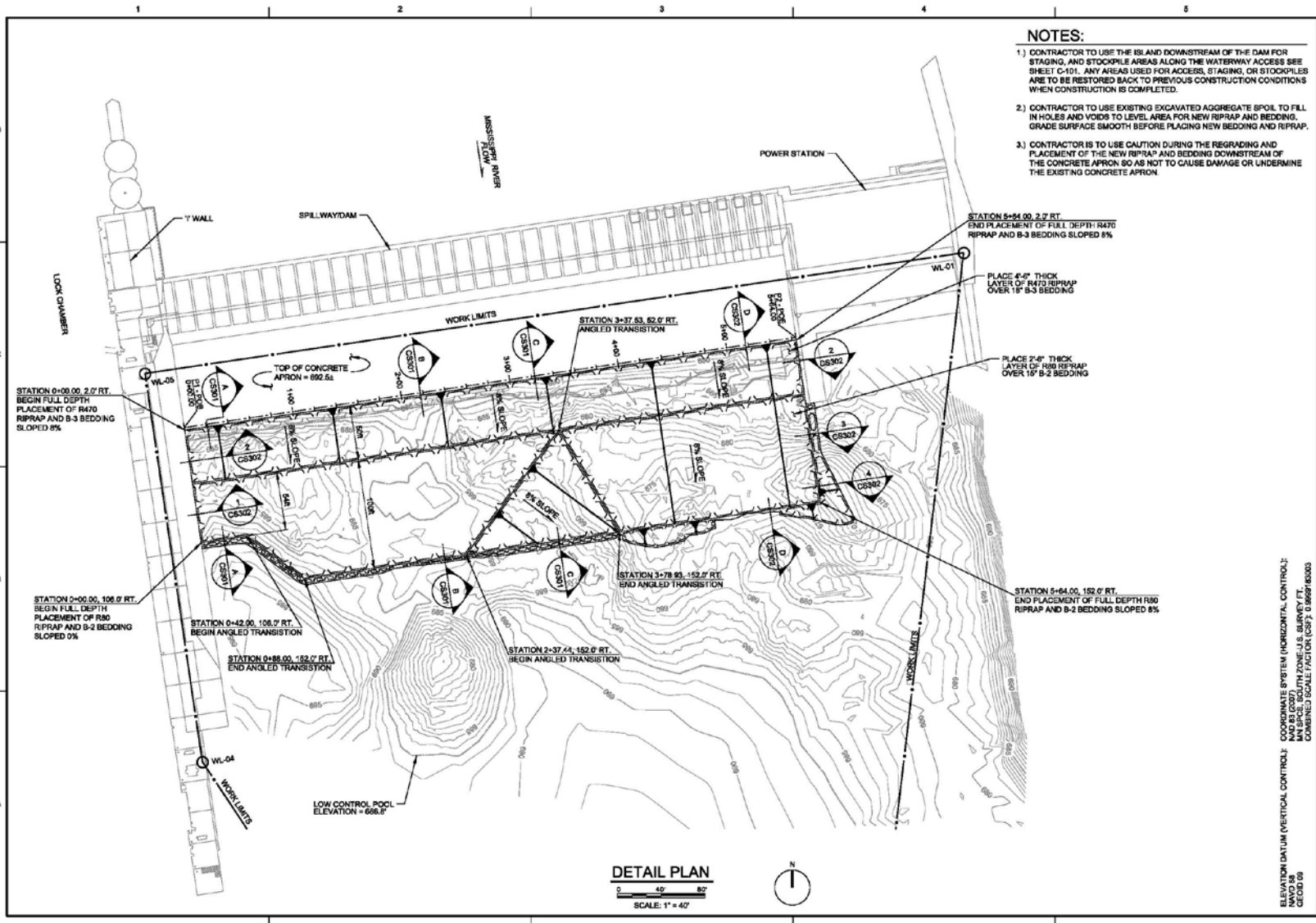
Sheet  
 of  
**C-101**



DATE	BY	DESCRIPTION

DATE	BY	DESCRIPTION

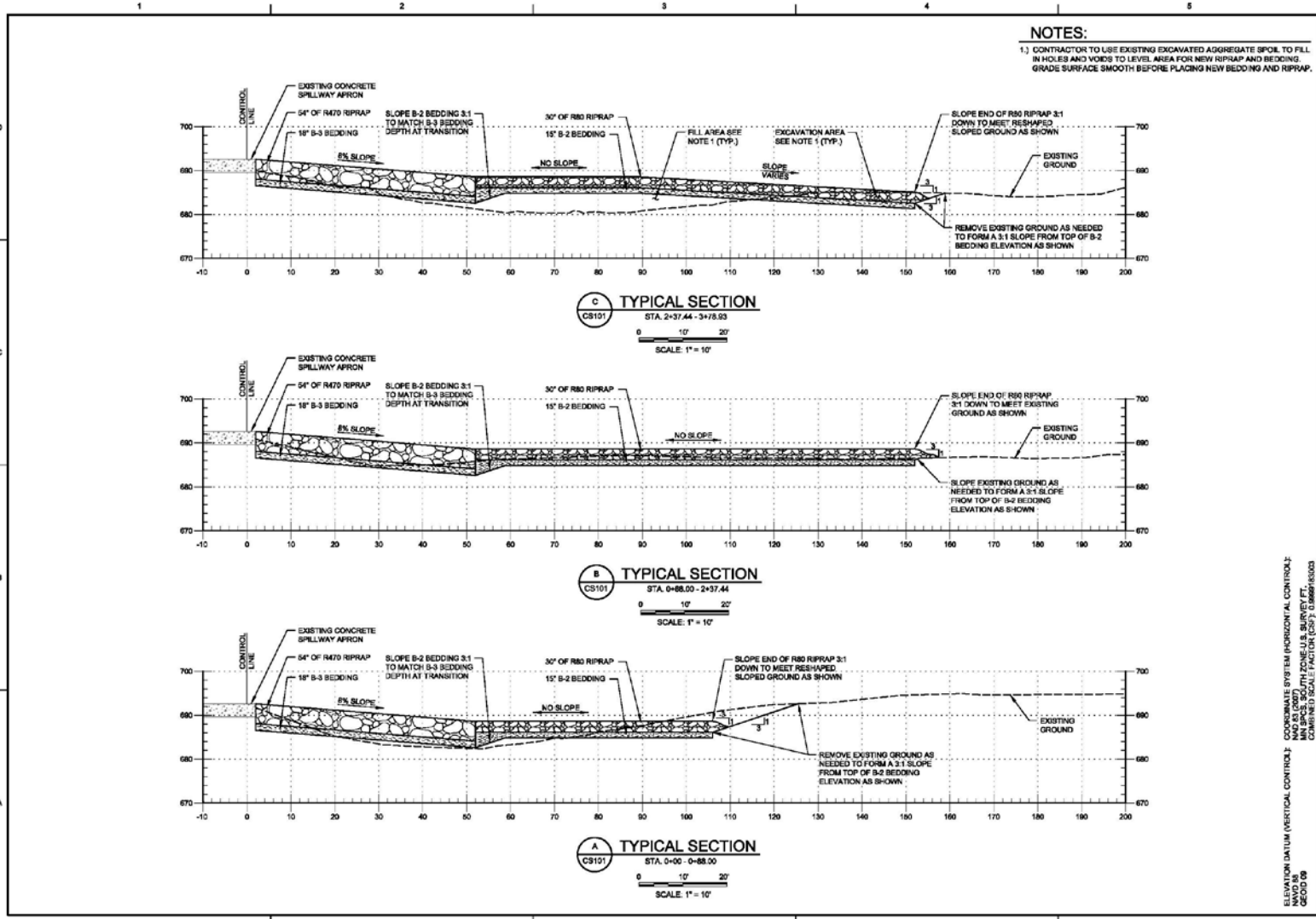
**Figure 2. Scour hole repair placement site at Lock and Dam 1**



		DATE		CONSULTATION	
		DATE		CONSULTATION	
LOCK CHAMBER LOCKER REPAIR MISSISSIPPI RIVER HENNING COUNTY, MINNESOTA DETAIL PLAN		PROJECT NO. DRAWING NO. SHEET NO. CONTRACT NO.	LOCATION DISTRICT DIVISION REGION	DESIGNER CHECKER APPROVER DATE	PROJECT NUMBER DRAWING NUMBER
ELEVATION DATUM (VERTICAL CONTROL): COORDINATE SYSTEM (HORIZONTAL CONTROL): U.S. ARMY CORPS OF ENGINEERS 87 FT. PAUL DISTRICT MINN. SPCS. SOUTH ZONE - U.S. SURVEY FT. COMBINED SCALE FACTOR (CSF): 0.999916003					
Sheet ID <b>CS101</b>					

Figure 3. Scour hole repair placement site at Lock and Dam 1





**US Army Corps of Engineers**

DATE	
DESIGNER	
CHECKER	
DATE	
APPROVER	
DATE	

PROJECT: LOCK AND DAM 1, MISSISSIPPI RIVER, HENNING COUNTY, MISSISSIPPI  
 SHEET: TYPICAL SECTIONS  
 SHEET ID: CS301

ELEVATION DATUM (VERTICAL CONTROL): COORDINATE SYSTEM (HORIZONTAL CONTROL):  
 NAVD 83 (DRED) / NAD 83 (DRED)  
 STATE PLANE (ZONE 18) SURVEY FT.  
 COMBINED SCALE FACTOR (CSF): 0.999978003

Figure 4. Scour hole repair placement site at Lock and Dam 1

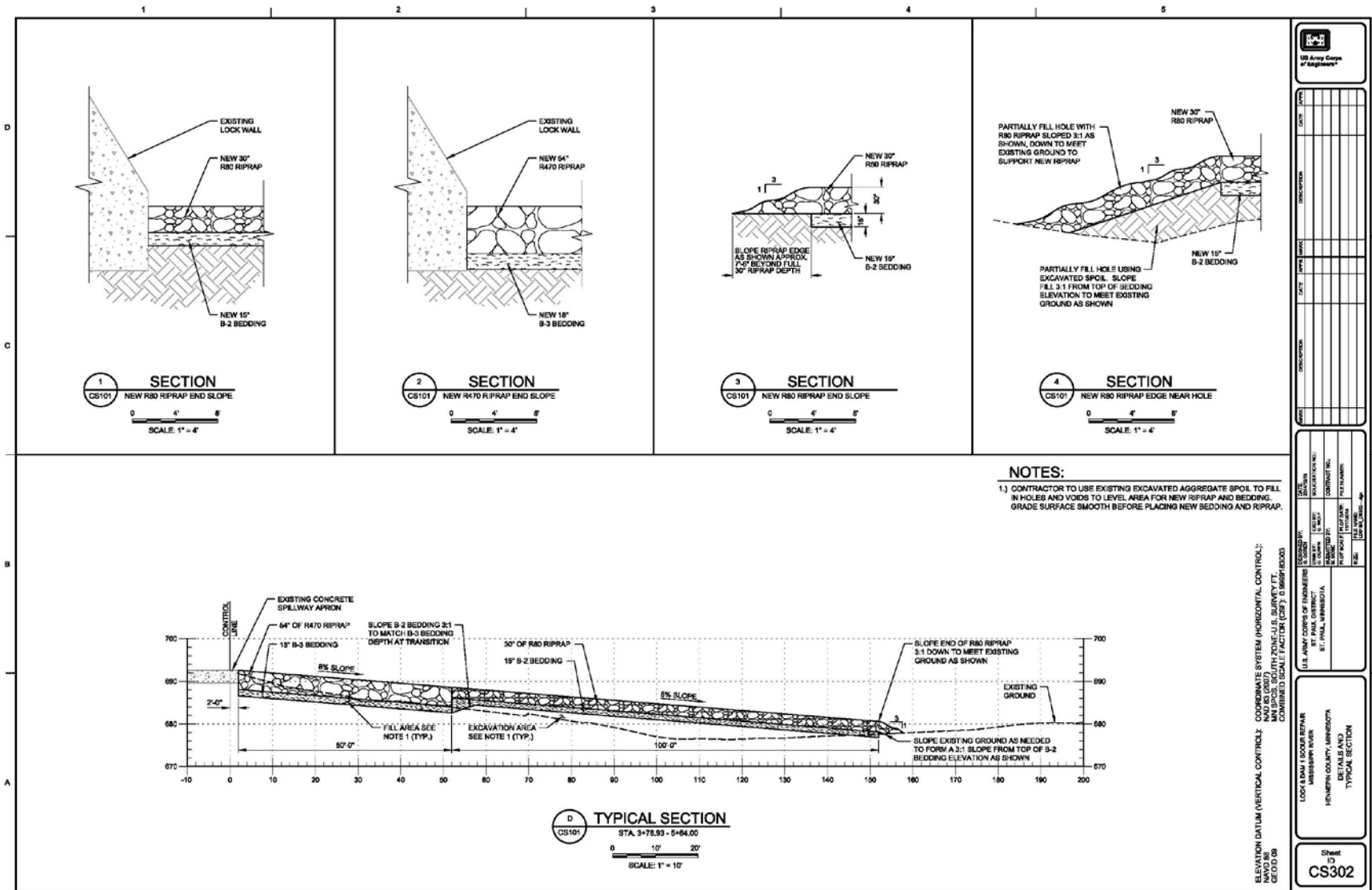


Figure 5. Scour hole repair placement site at Lock and Dam 1