

Figure 1. Charles A. Lindbergh State Park, Tenant Farmer's House Removal, Morrison County

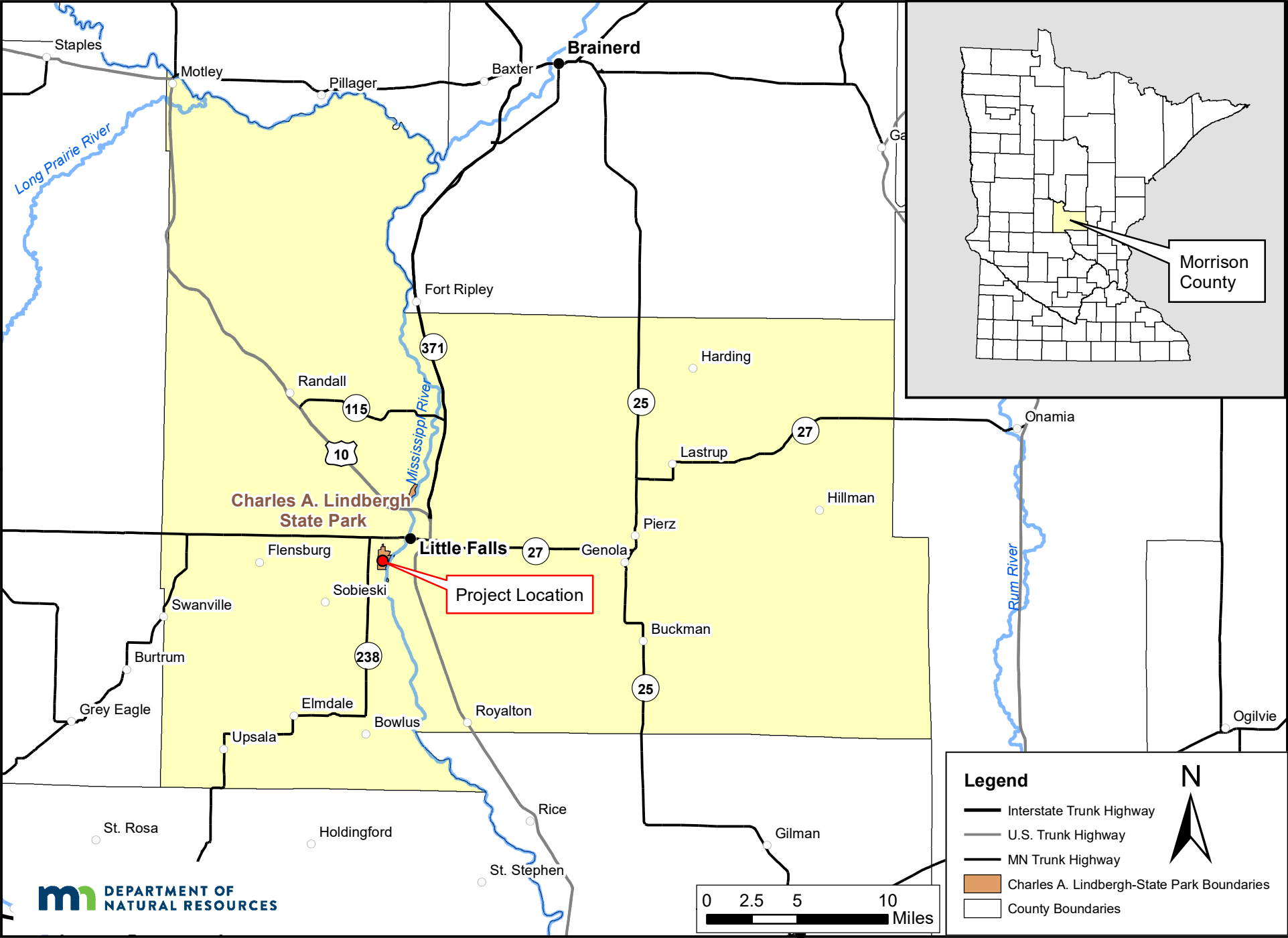


Figure 2. Charles A. Lindbergh State Park, Tenant Farmer's House Removal, USGS 1:24,000

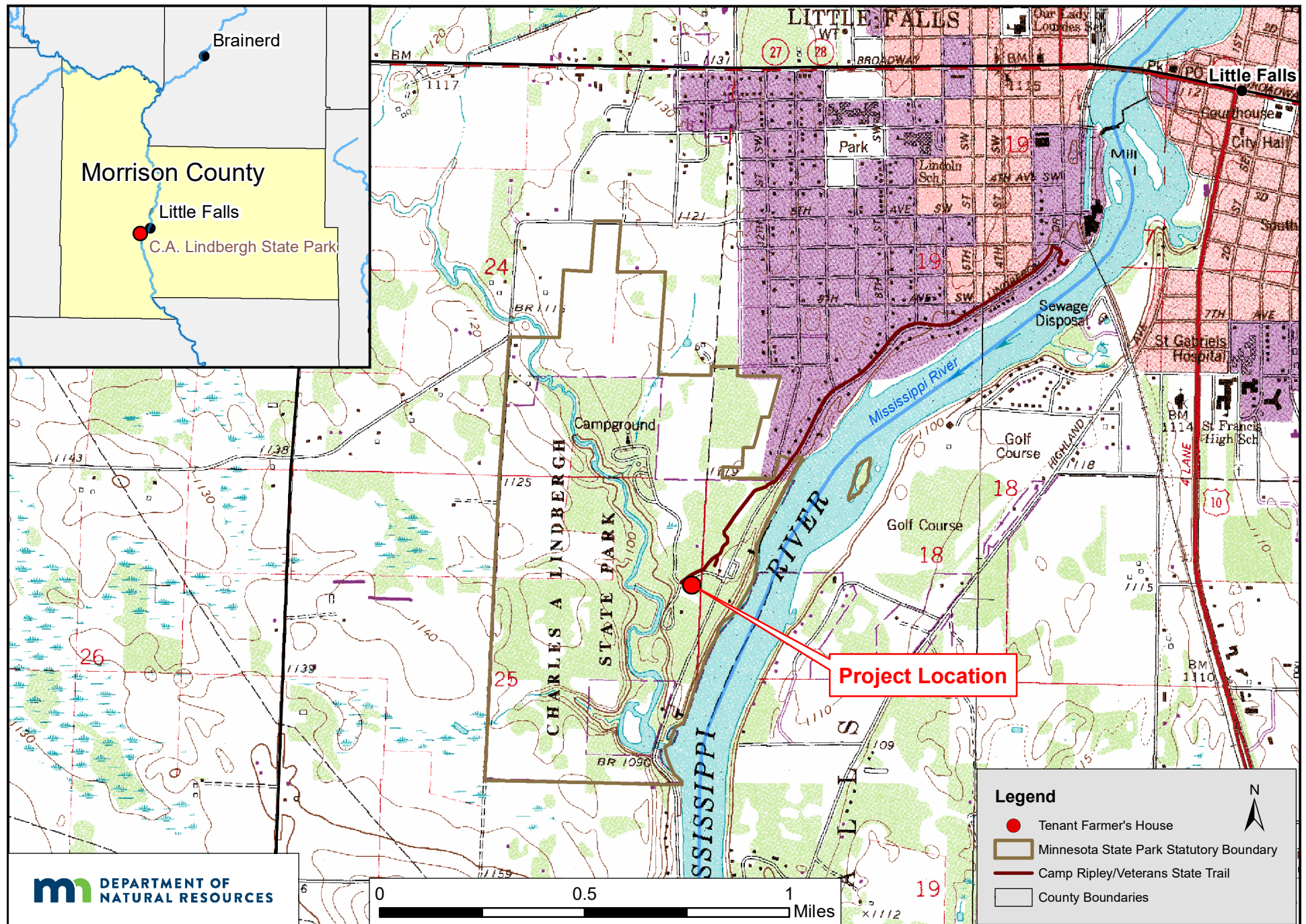
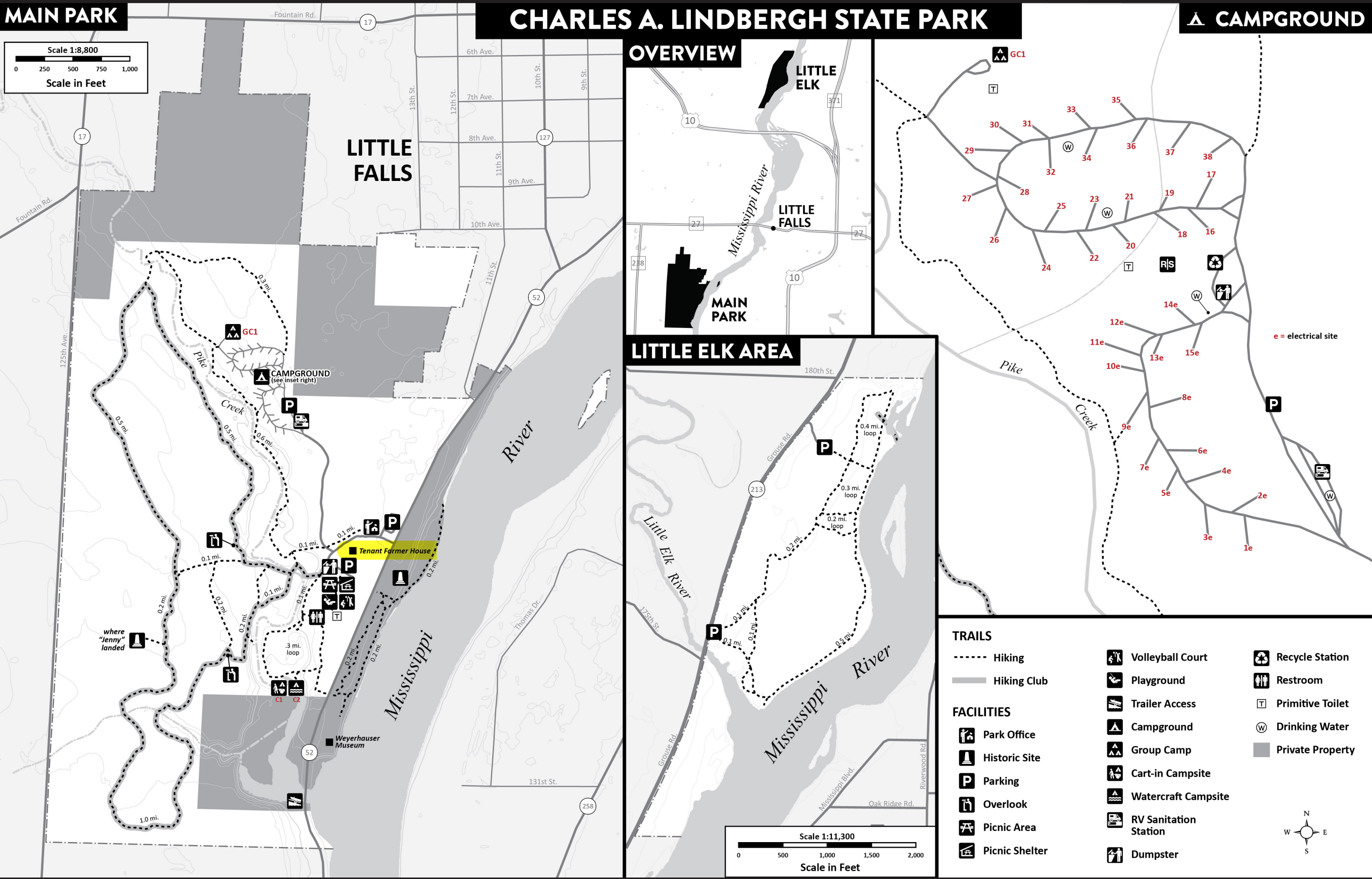


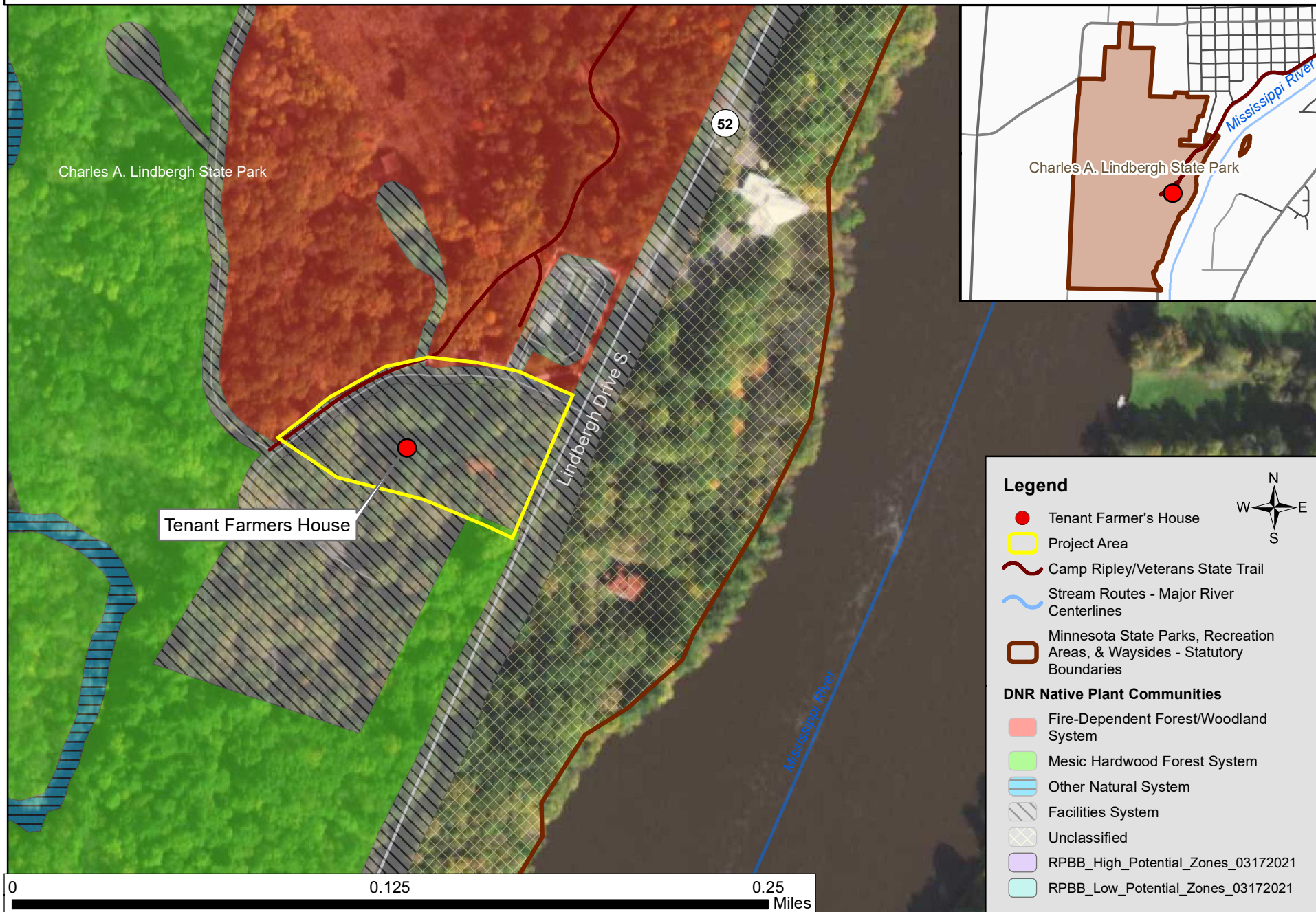


Figure 3. Charles A. Lindbergh State Park Visitor Map



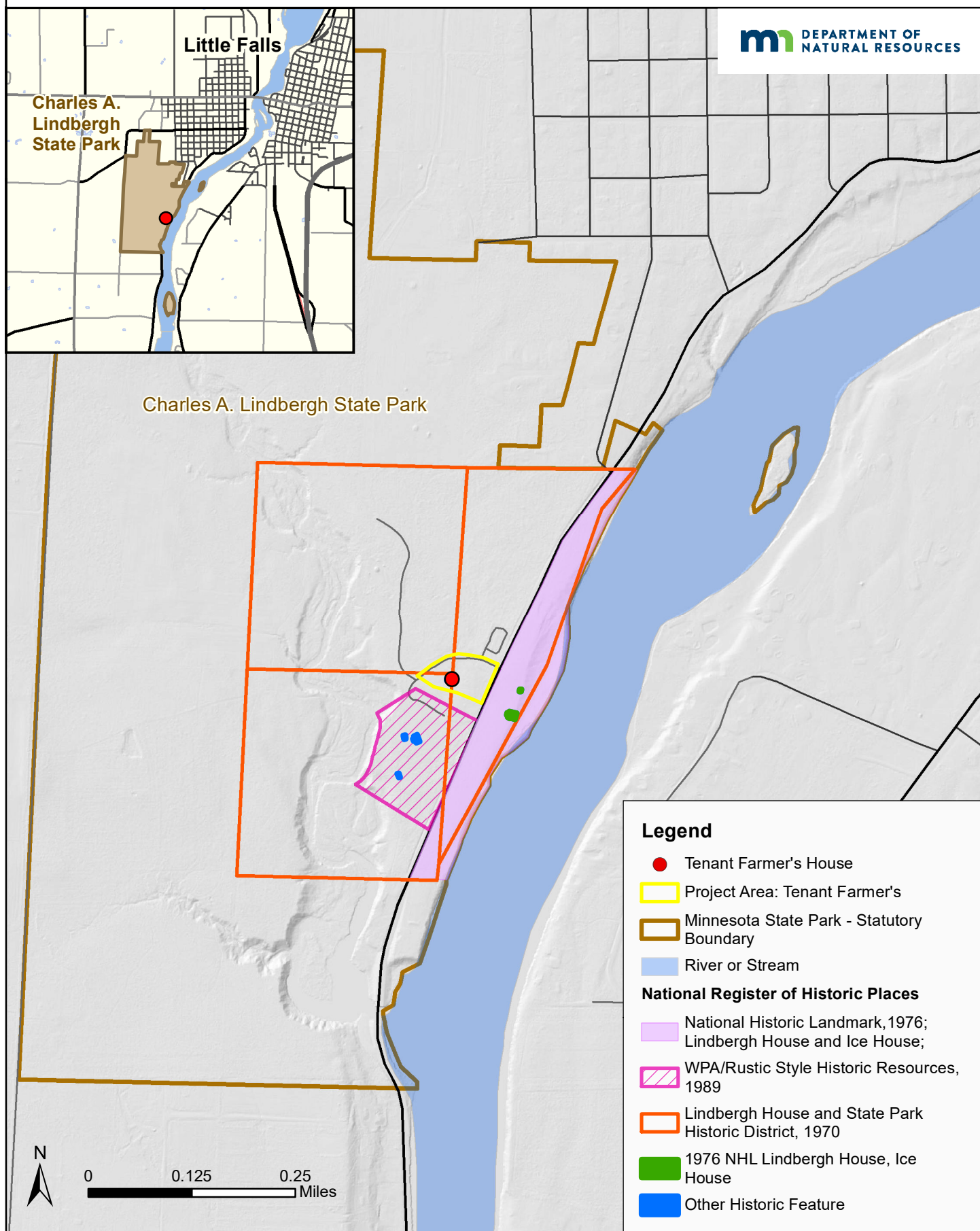


**Figure 4. Charles A. Lindbergh State Park, Tenant Farmer's House Removal - Project Area Native Plant Communities and Cover Types.**





**Figure 5. Charles A. Lindbergh State Park, Tenant Farmer's House Removal - Historic Districts and Features.**



**Figure 6. Photos of the Tenant Farmer's House at Charles A. Lindbergh State Park.**



Tenant Farmer's House, about 1997 after exterior improvements completed.



Tenant Farmer's House, 2020, front view (left) and side view with 1960's addition (right).