

FIGURES

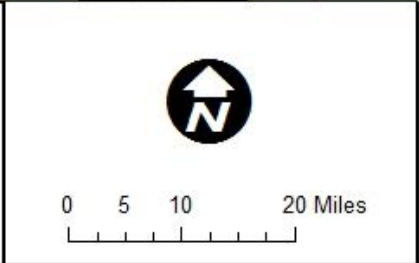


Figure 1. General Project Location

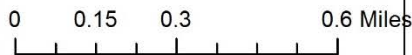
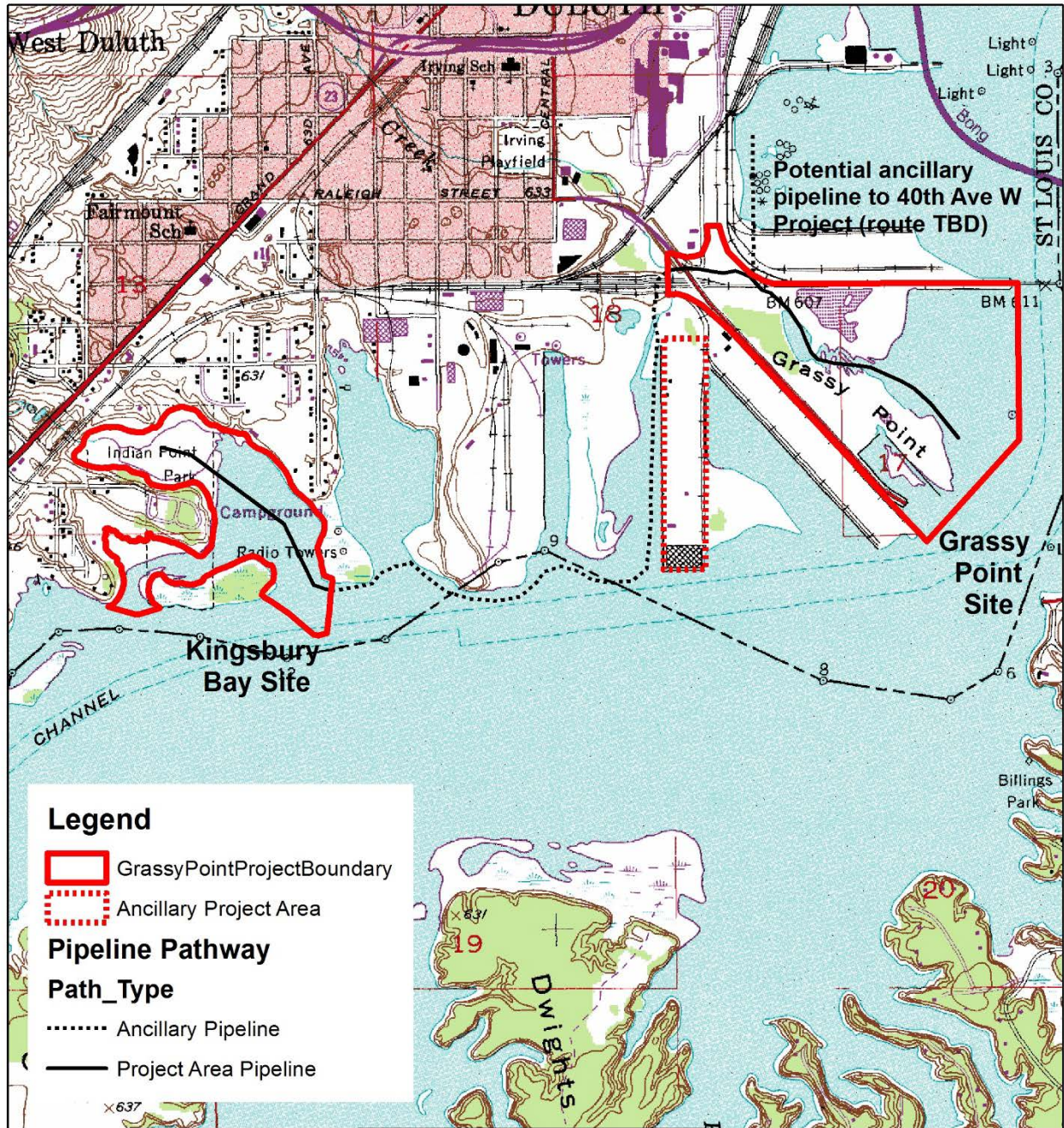
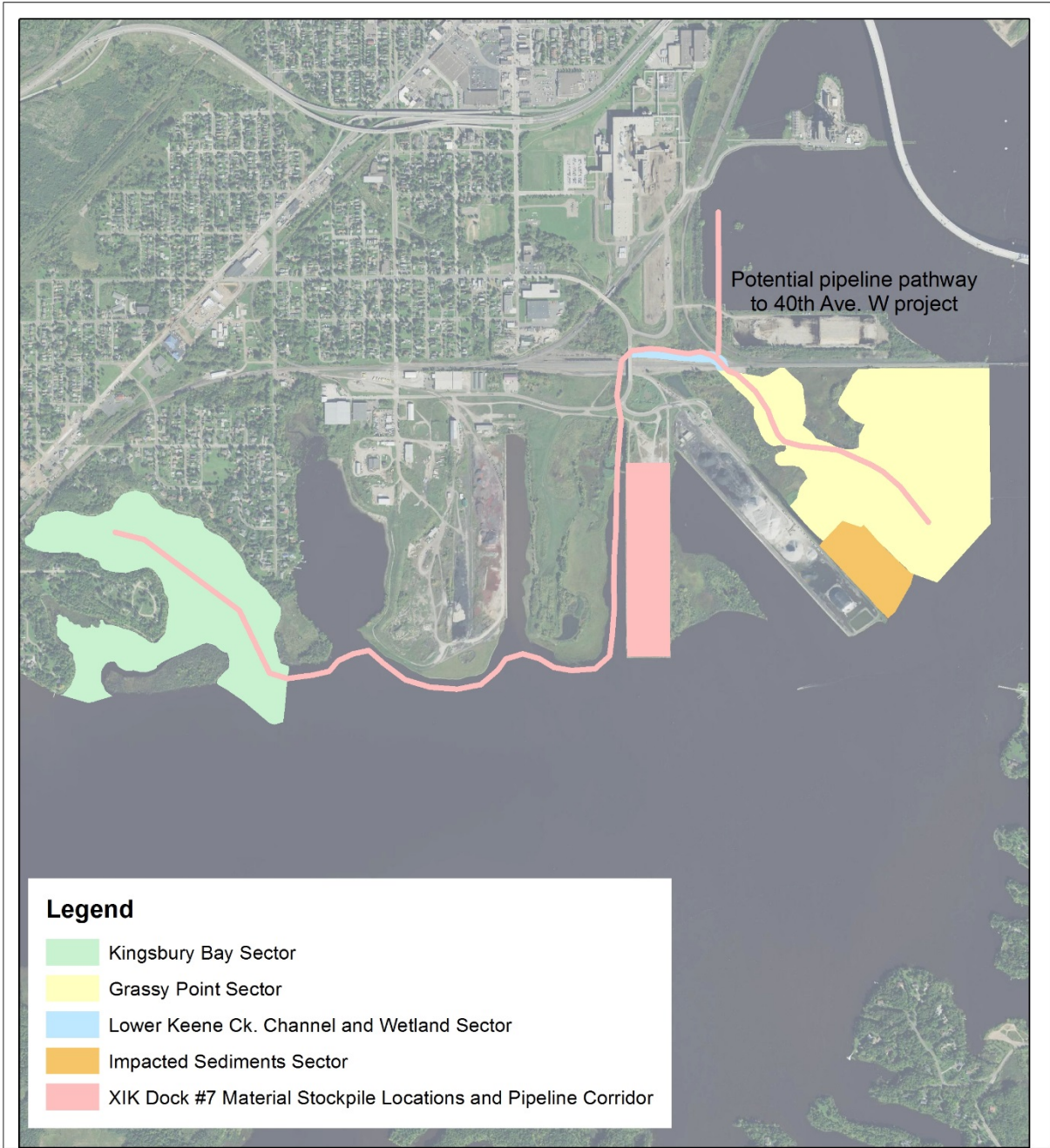
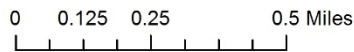


Figure 2.
Kingsbury Bay and
Grassy Point 1:24,000
Topographic Map

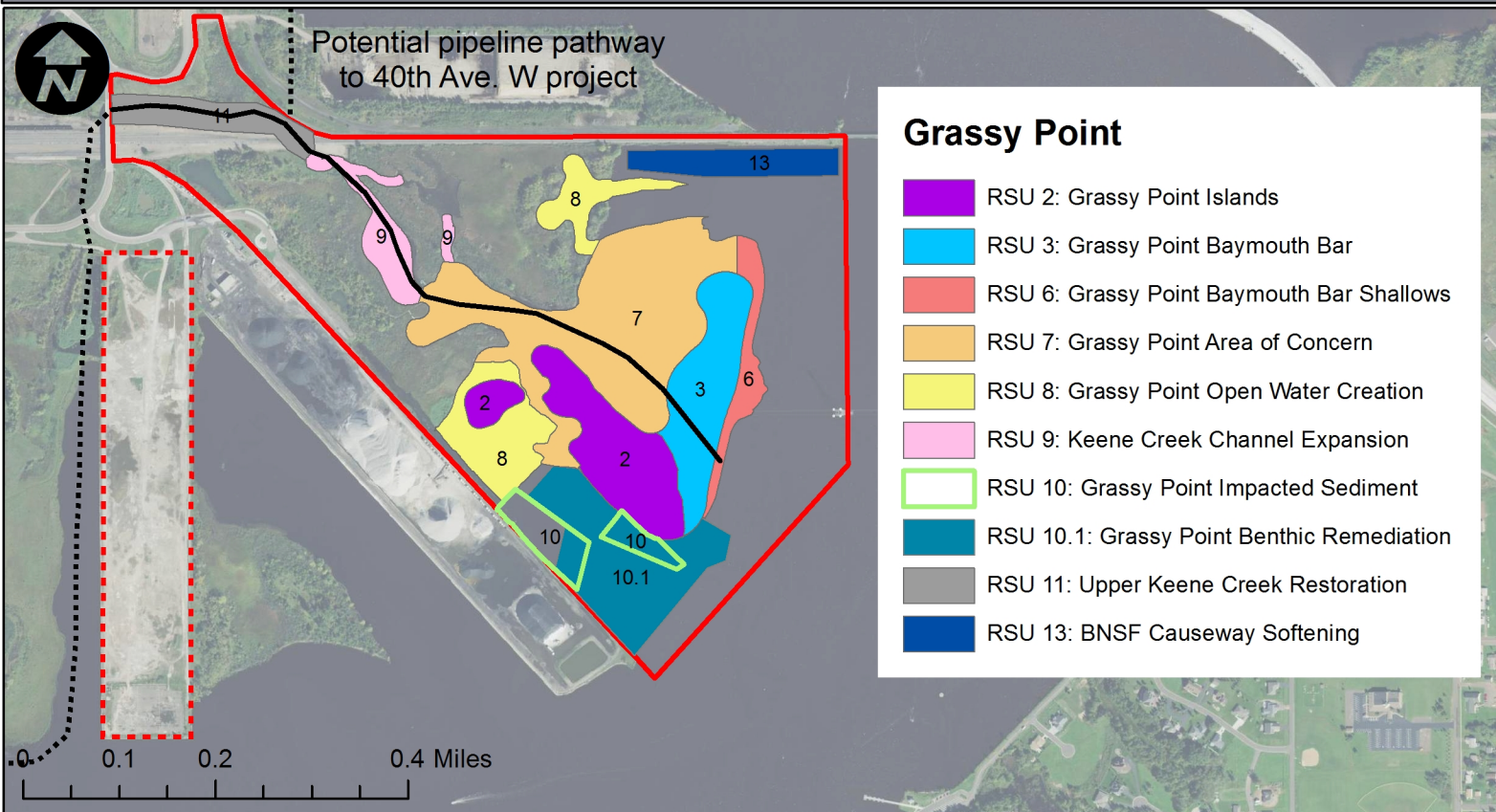
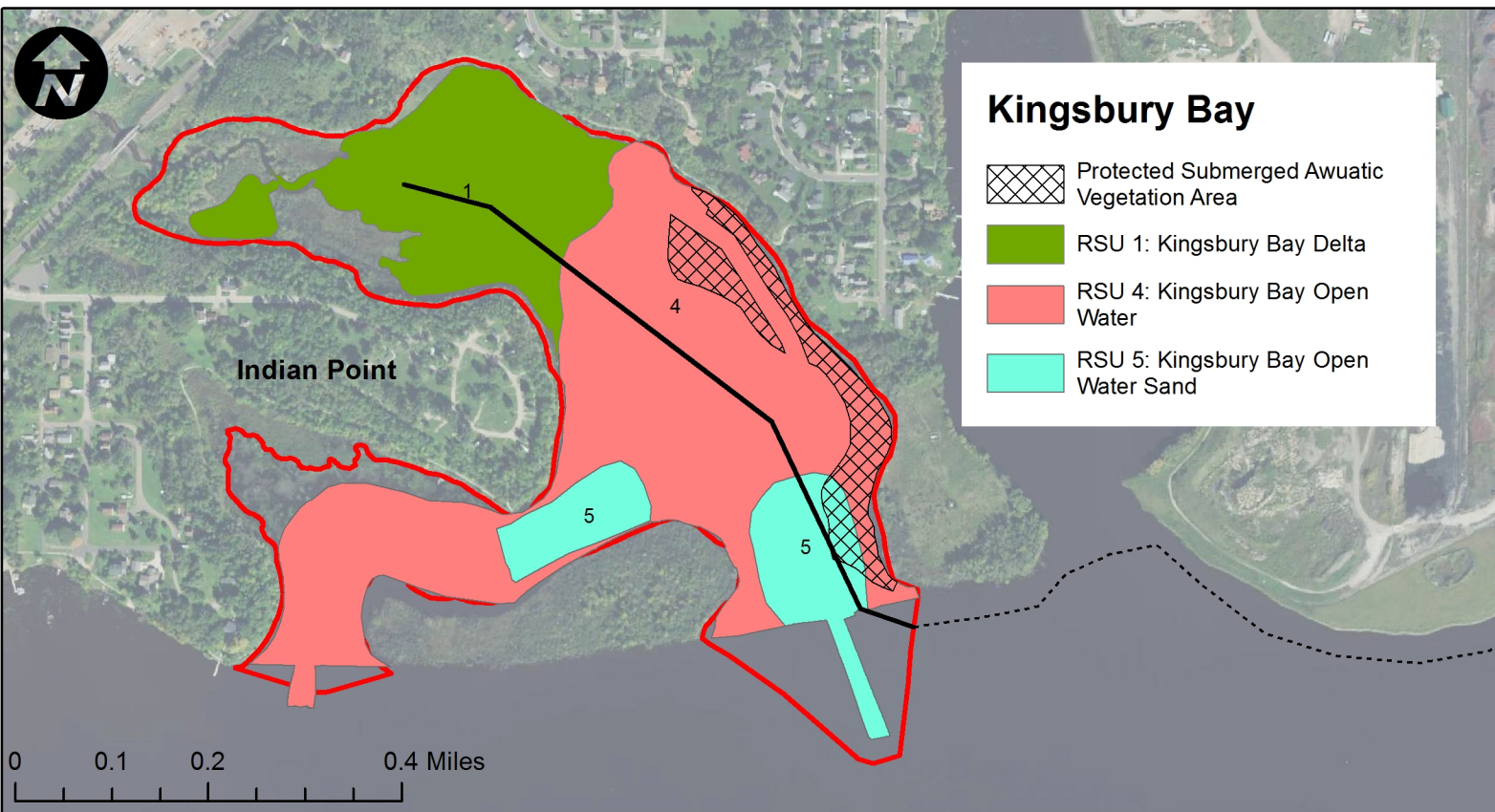


Legend

- Kingsbury Bay Sector
- Grassy Point Sector
- Lower Keene Ck. Channel and Wetland Sector
- Impacted Sediments Sector
- XIK Dock #7 Material Stockpile Locations and Pipeline Corridor



**Figure 3.
Project Sectors**



Legend

- Ancillary Pipeline
- Project Area Pipeline
- ▭ Restoration Project Area
- ▭ Ancillary Project Area (RSU 7: XIK Dock 7)

**Figure 4.
Restoration Site
Units (RSUs)**



Figure 5. Kingsbury Bay Historical Image Comparison

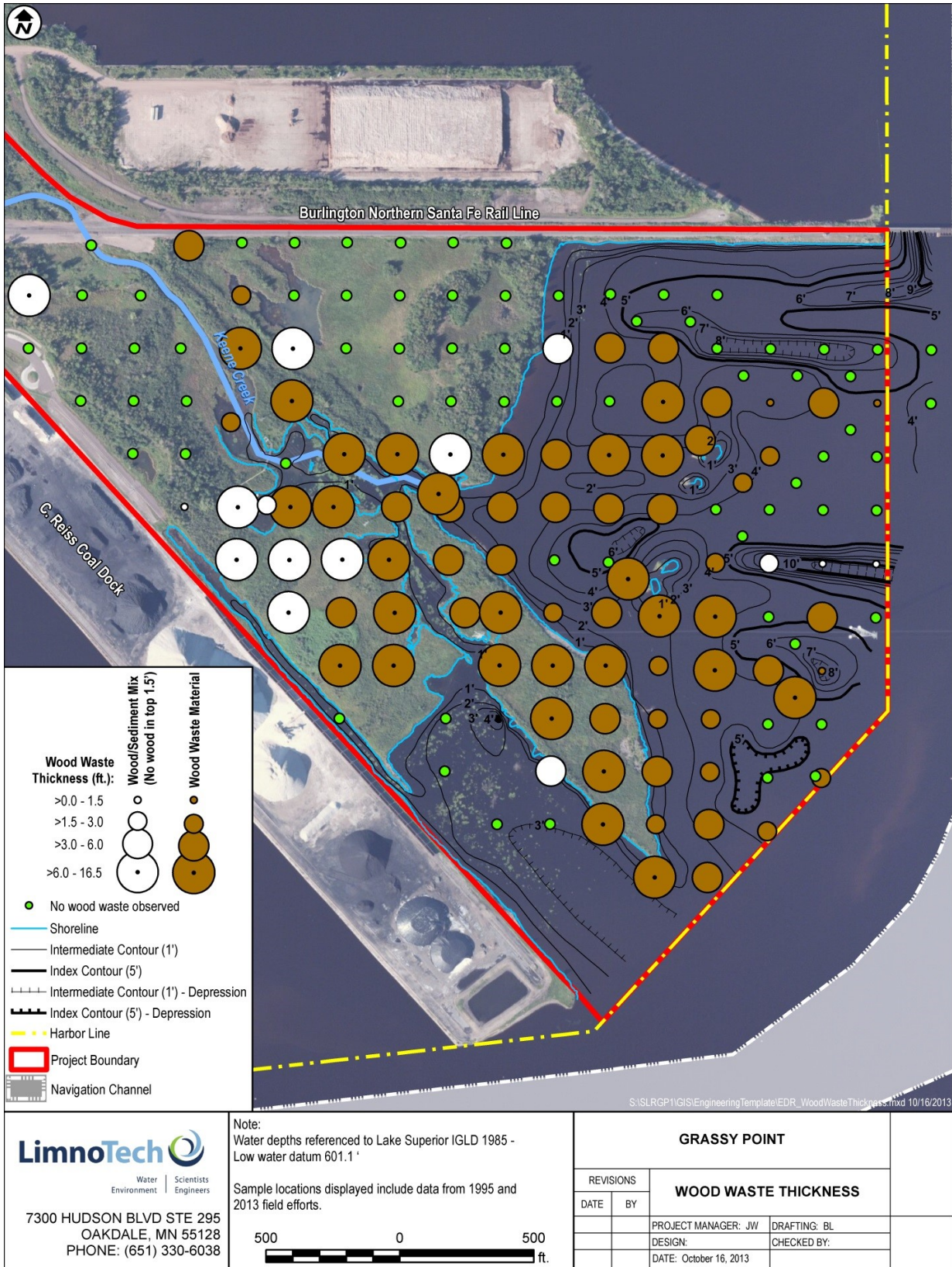


Figure 6. Grassy Point Wood Waste Evaluation

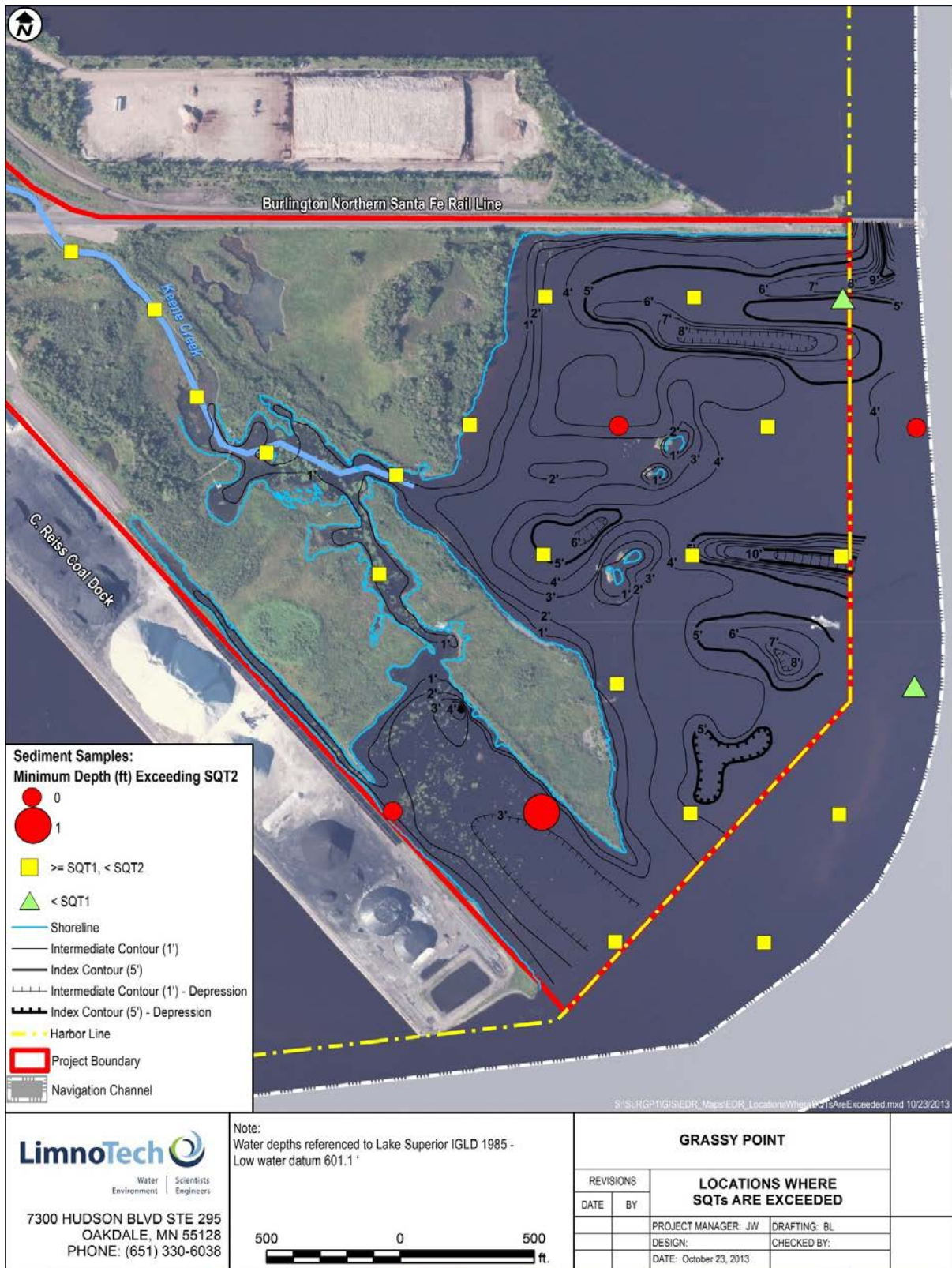


Figure 7. Grassy Point Sediment Sampling Results



Figure 8A. Kingsbury Bay Concept Plan



Figure 8B. Grassy Point Concept Plan



Legend

-  Restoration Project Boundary
-  E16D
-  1020A
-  E24F
-  1026A
-  F155B
-  1028A
-  F155G

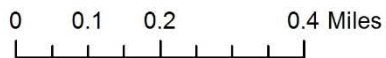
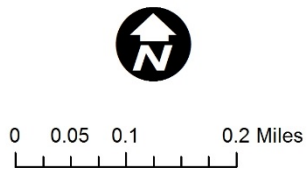
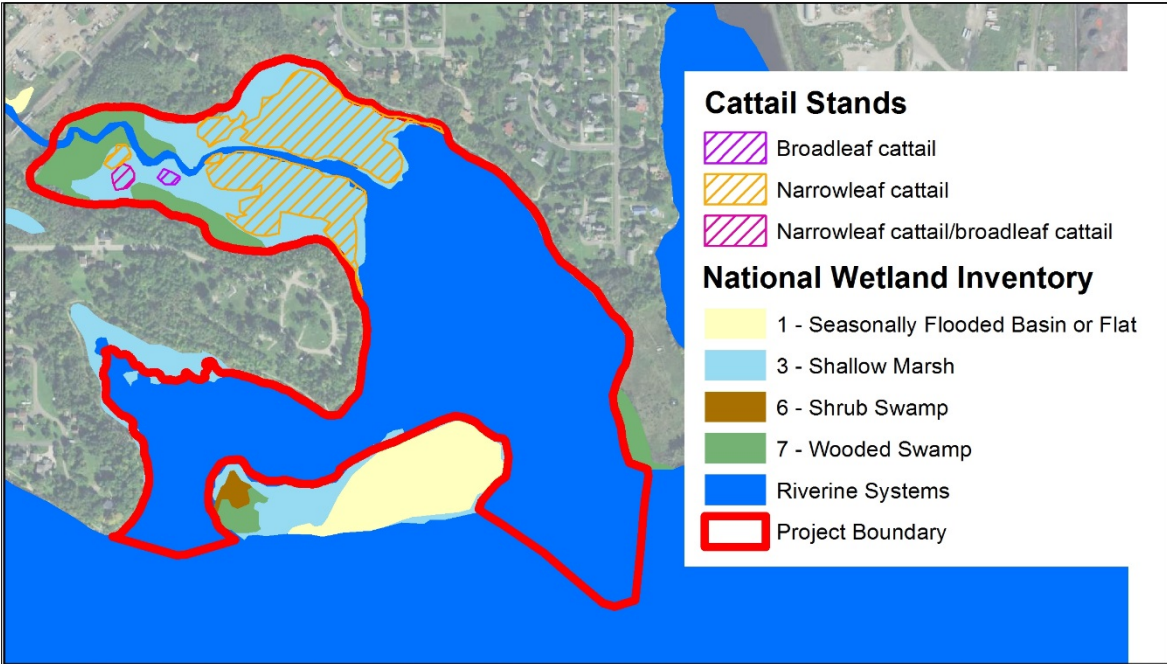


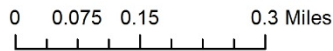
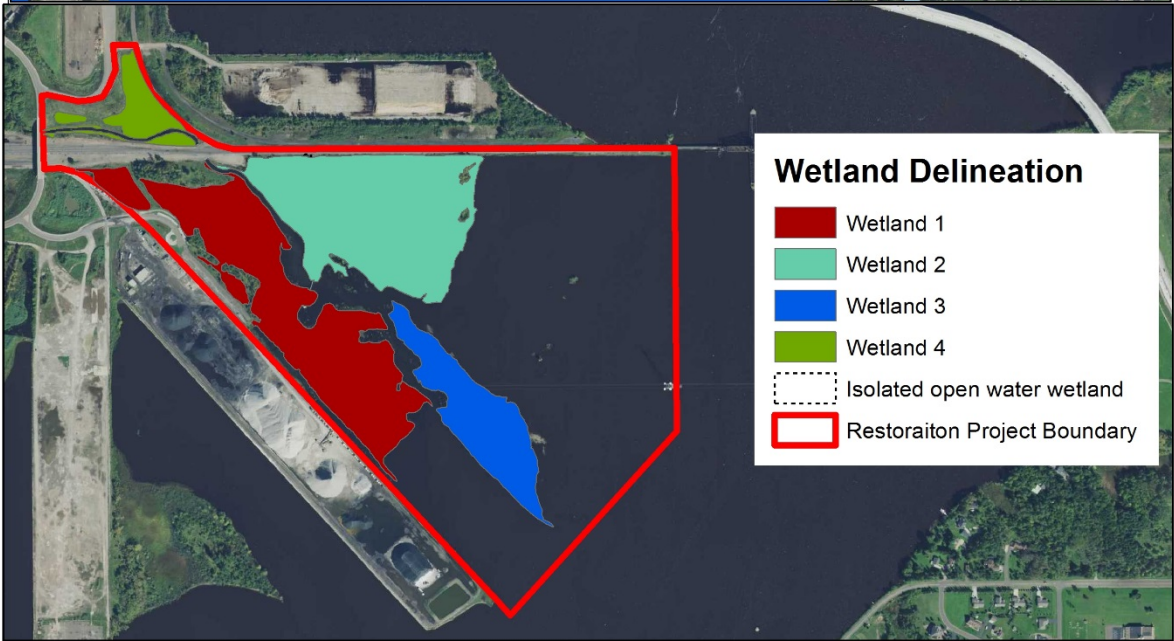
Figure 9
Kingsbury Bay and
Grassy Point
Soils Data



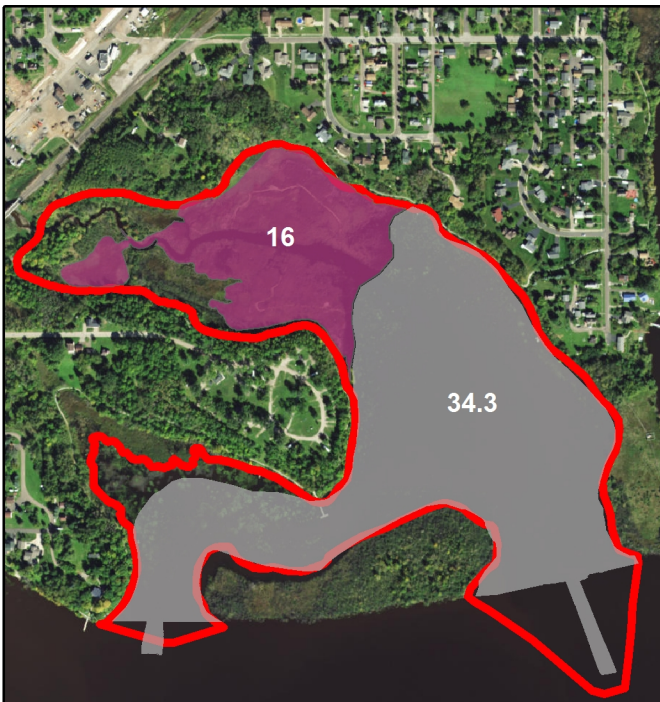
Figure 10. Minnesota Well Index. Approximate Project Boundaries shown in red.



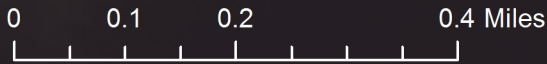
**Figure 11A.
Kingsbury Bay
Wetlands**



**Figure 11B.
Grassy Point
Wetlands**



Associated RSUs	Site	Acres				Description
		Wetland Created	Wetland Converted	Wetland Removed	No Wetland Type Impact	
1	Kingsbury Bay		16.0			Exotic monoculture wetland to open water wetland
4,5	Kingsbury Bay				34.3	Open water wetland - restored bathymetry
8	Grassy Point		7.7			Exotic monoculture wetland to open water wetland
2	Grassy Point			1.4		Exotic monoculture wetland to upland
2	Grassy Point			8.6		Wood waste wetland to upland
3	Grassy Point				8.2	Open water to upland
6,7,13	Grassy Point	22.3				Open water to wetland
7,9	Grassy Point		10.4			Wood impaired wetland to open water wetland
Total		22.3	34.1	10	42.5	



Legend

- Exotic monoculture wetland to open water wetland
- Exotic monoculture wetland to upland
- Open water to upland
- Open water to wetland
- Wood impaired wetland to open water wetland
- Wood waste wetland to upland
- Open water wetland - restored bathymetry
- Restoration Project boundary



**Figure 11C.
Wetland
Conversions**

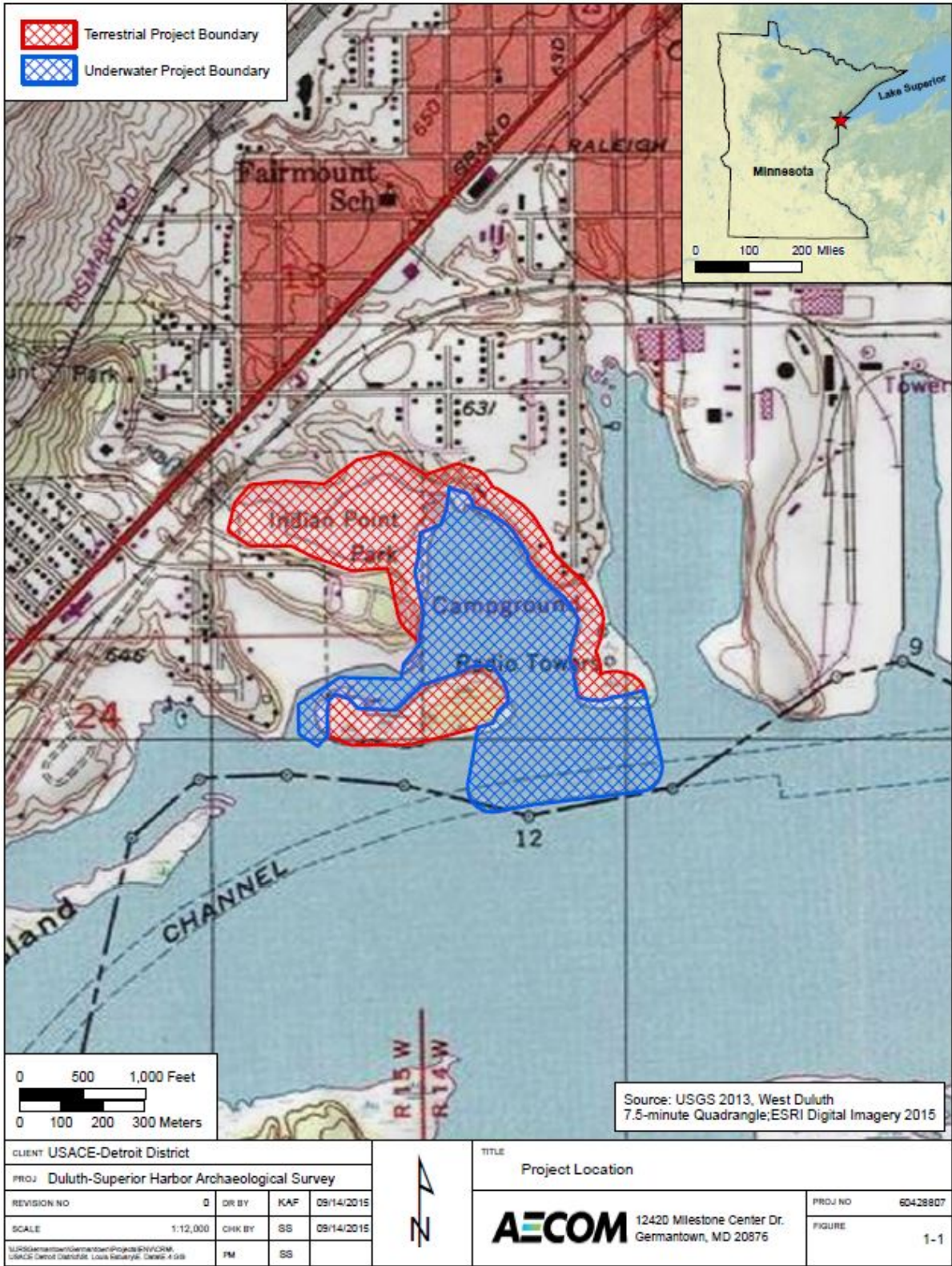


Figure 12A. Kingsbury Bay Archaeological Survey

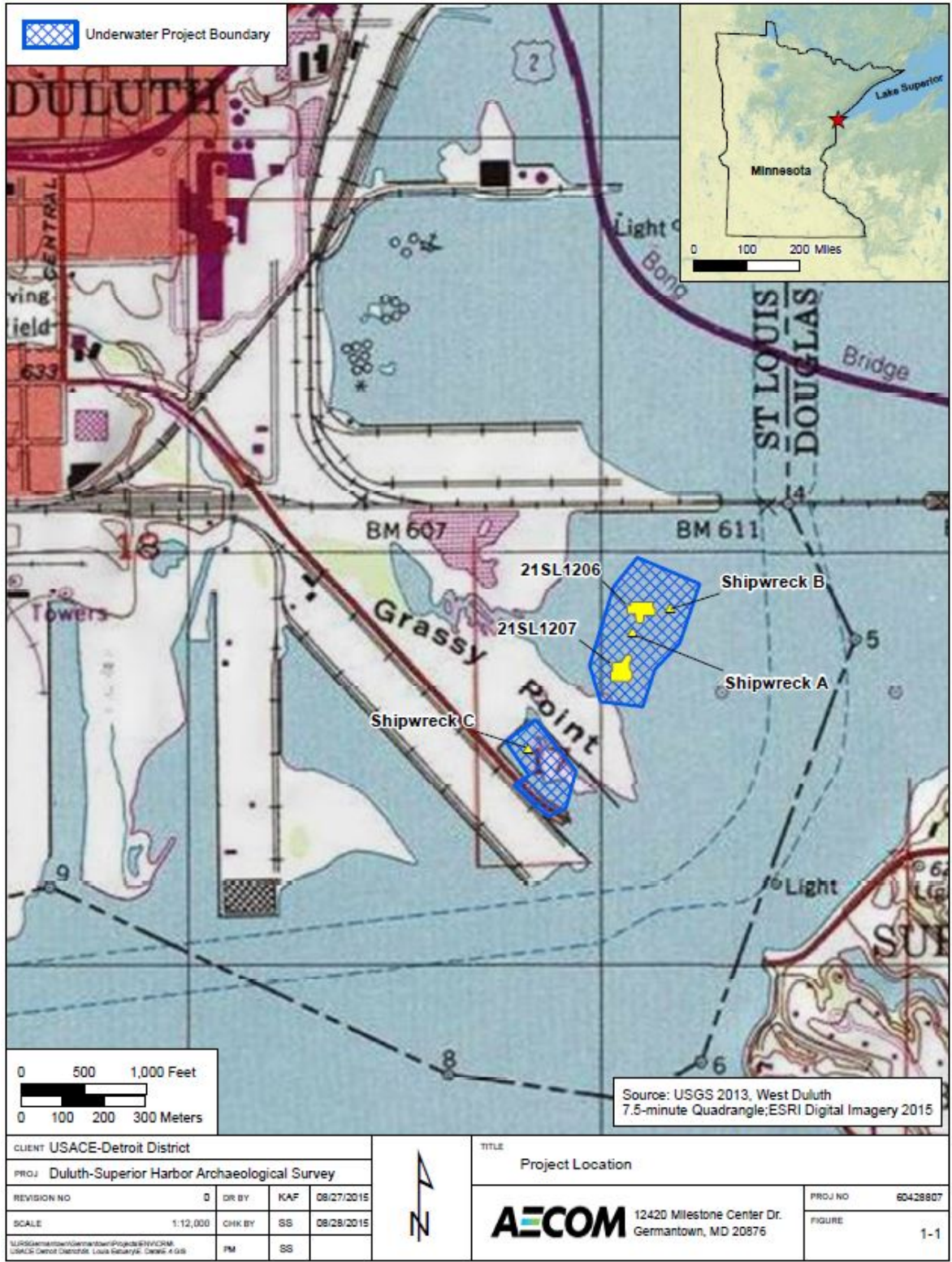
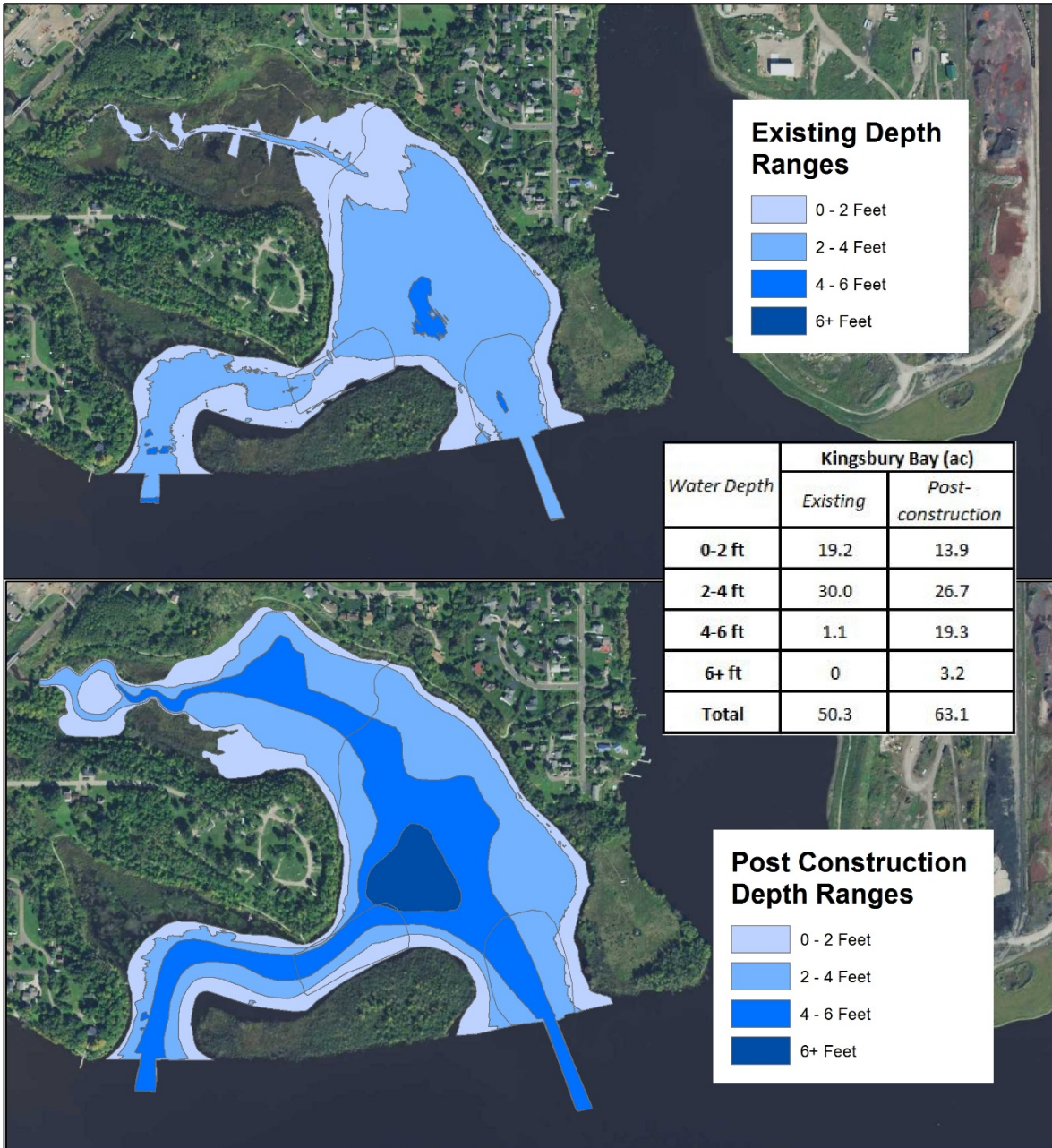
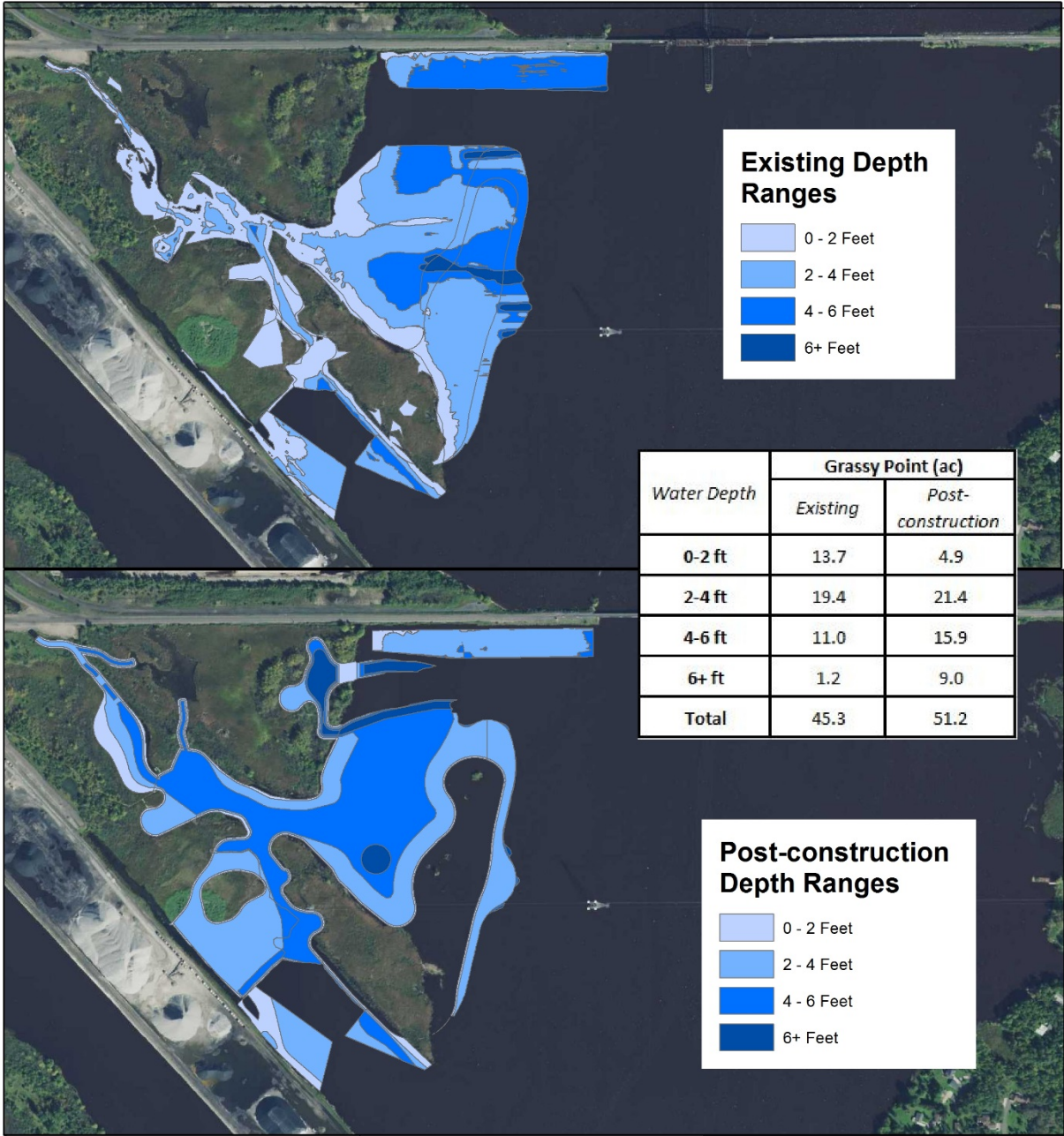


Figure 12B. Grassy Point Archaeological Survey



0 0.05 0.1 0.2 Miles

**Figure 13A.
Kingsbury Bay
Depth Ranges**



**Figure 13B.
Grassy Point
Depth Ranges**

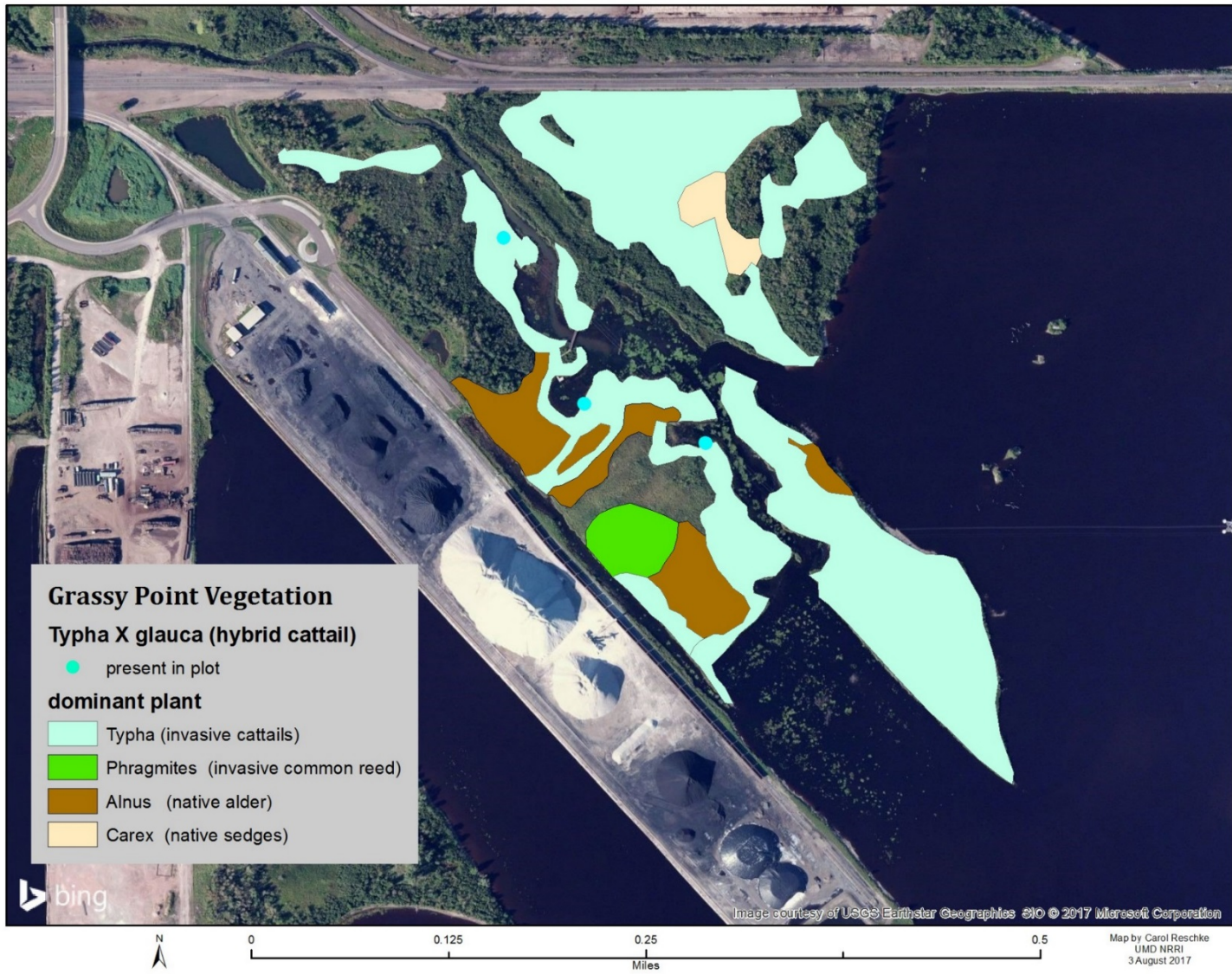


Figure 14. Grassy Point Emergent Vegetation

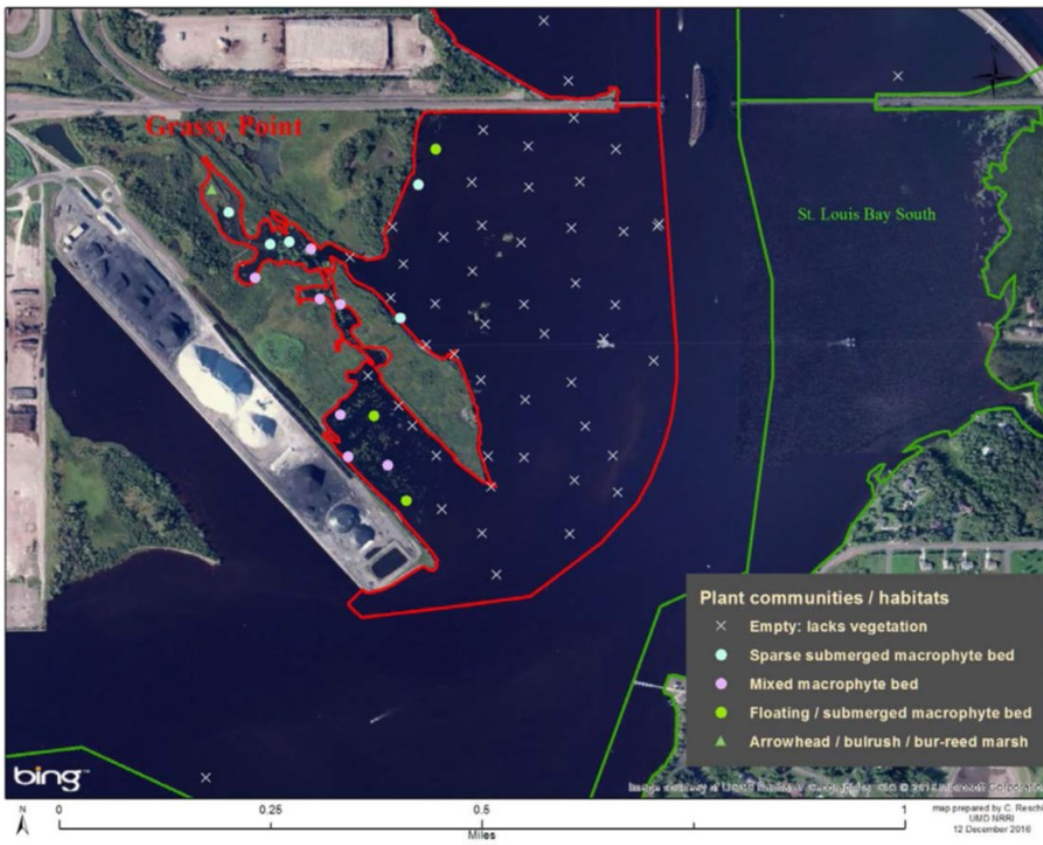


Figure 15. Kingsbury Bay and Grassy Point aquatic plant communities