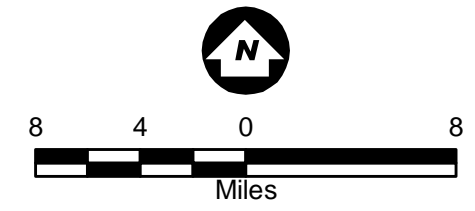


- ### Legend
- Iron Range Study Area
  - Current and Proposed Keetac Footprint
  - County Boundary
- #### Future Wildlife Corridors
- High Quality Corridors
  - Moderate Quality Corridors
- 1 Unaffected Corridors
  - 1 Partially-Impacted Corridors
  - 1 Eliminated Corridors



Source: USGS, Barr, LMIC, MNDNR, National Hydro Dataset, MPCA, Itasca County, EOR, St. Louis County, City of Hibbing, City of Nashwauk, U.S. Steel, and Mn/DOT. 2008 Aerial Photograph

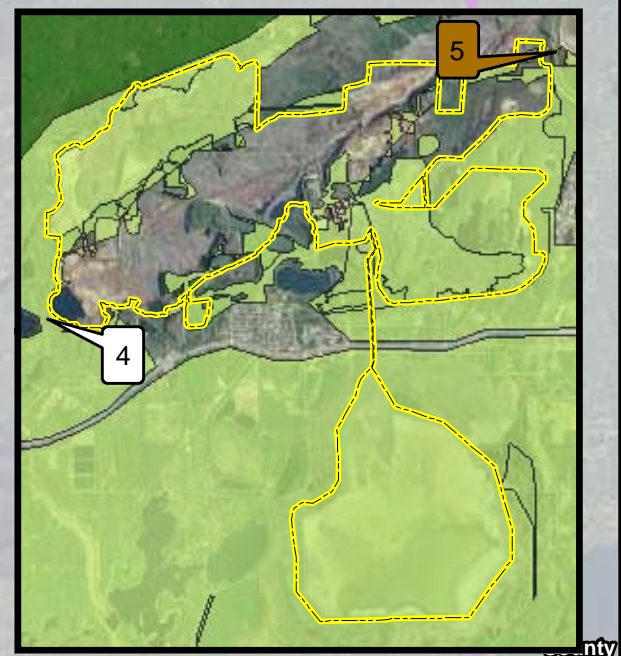


Figure 5.6.7  
 Future Wildlife  
 Travel Corridors  
 U.S. Steel Keetac  
 Keewatin, MN



Model: I:\LEP\2018\MapDocs\5\_Cumulative\_Effects\Figure\_5.6.7\_Future\_Wildlife\_Travel\_Corridors.mxd  
 Date: 10/15/2018 10:15:18 AM