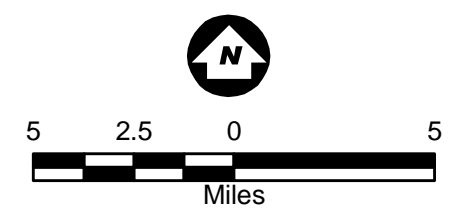
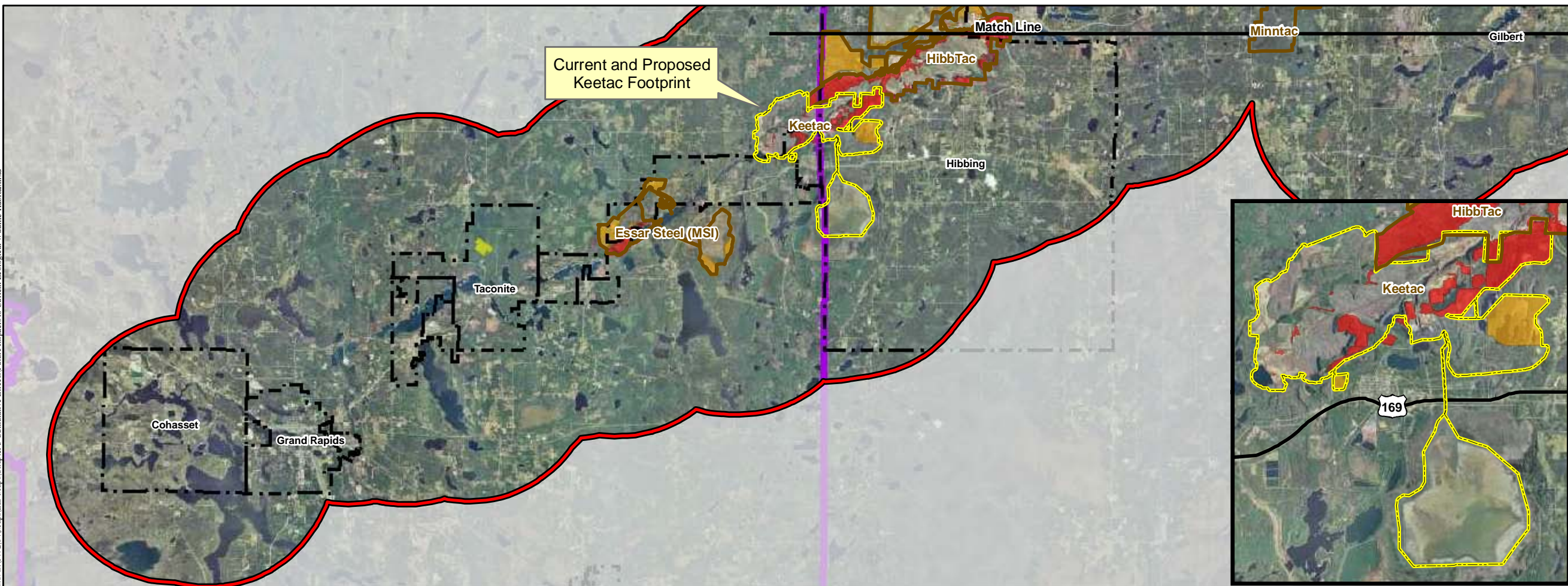


**Legend**

- Current and Proposed Keetac Footprint
- Iron Range Study Area
- County Boundary
- City Boundary
- Future Project Boundaries

**Future Project Impact Areas**

- High
- Moderate
- Other



Source: USGS, Barr, LMIC, MNDNR, National Hydro Dataset, MPCA, Itasca County, St. Louis County, City of Hibbing, City of Nashauk, U.S. Steel, and Mn/DOT. 2008 Aerial Photograph

**Figure 5.6.5**  
 Future Impacts to Current Ecological Wildlife Habitat U.S. Steel Keetac Keewatin, MN



Map: L:\172041\Map\Chapter 5 Cumulative Effects\Future Impacts to Current Ecological Wildlife Habitat.mxd