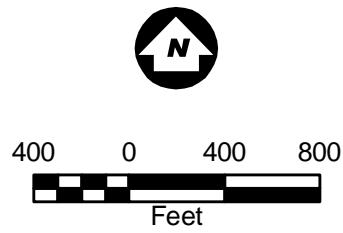
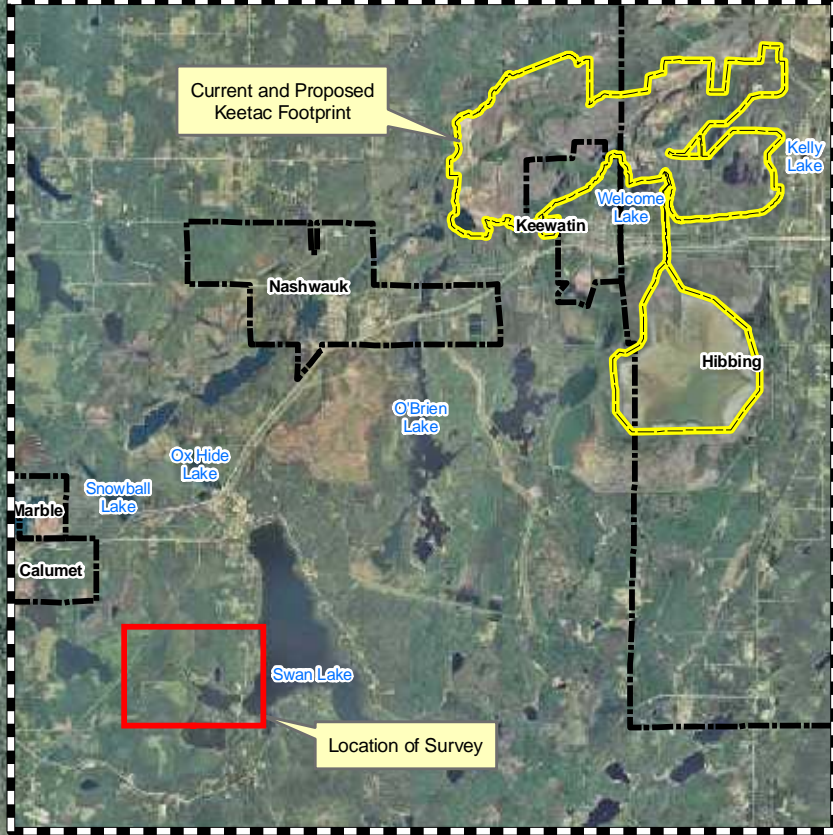


- Legend**
- Current and Proposed Keetac Footprint
 - Wild Rice Survey Routes
 - Wild Rice Extents
 - City Boundary



Source: USGS, Barr, LMIC, MNDNR, National Hydro Dataset, MPCA, Itasca County, St. Louis County, City of Hibbing, City of Nashwauk, U.S. Steel, and Mn/DOT. 2008 Aerial Photograph

Figure 4.7.3
 Wild Rice (*Zizania* sp.)
 Occurrence and Density
 in the Swan River (Swan
 Lake Outlet to the Dam)
 September 11, 2009
 U.S Steel Keetac
 Keewatin, MN



Map: L:\1472\04\Maps\GIS Maps\Chapter 4\Affected Env and Env Consequences\Wild Rice Occurrence and Density in Swan River\Wenck Version.mxd