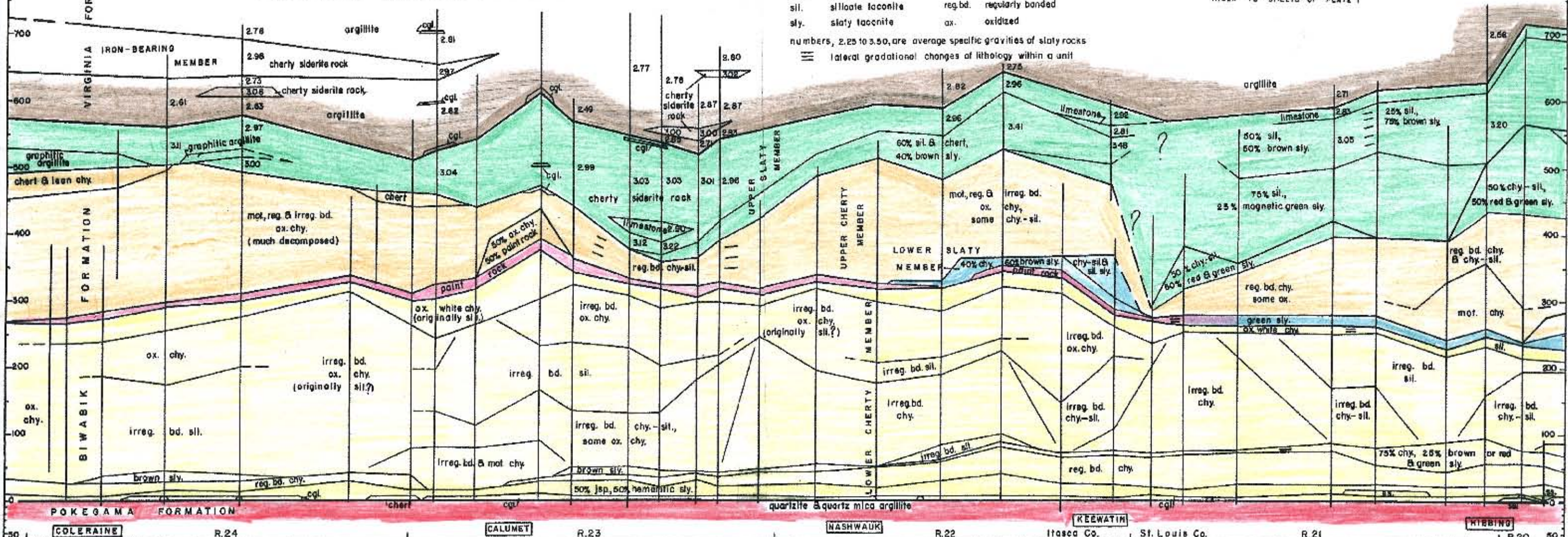


STRATIGRAPHY OF BIWABIK IRON FORMATION SUBCROP, MESABI RANGE, MINNESOTA

Diamond drill holes are projected onto vertical plane following Biwabik-Virginia contact. Datum is base of Biwabik formation.

Horizontal scale 0 2 4 5 miles



KEY

algal structures	ss. iron-bearing sandstone
cgl. conglomerate	irreg. bd. irregularly banded
chy. cherty taconite	lam. laminated
jsp. jaspery taconite	mot. mottled
sil. siliceous taconite	reg. bd. regularly banded
sly. slaty taconite	ox. oxidized

numbers, 2.25 to 3.50, are average specific gravities of slaty rocks

lateral gradational changes of lithology within a unit

From David A. White, The Stratigraphy and Structure of the Mesabi Range, Minnesota. (Minnesota Geological Survey Bulletin No. 38.) Minneapolis: University of Minnesota Press, 1954.

Geology by David A. White, 1953

Legend

- Biwabik Fm
 - Upper Slaty Member
 - Upper Cherty Member
 - Lower Slaty Member
 - Paintrock
 - Lower Cherty Member
- Pokegama Fm. quartzite

Modified from White, 1954 (colored only)

Figure 3.1.1
Mineral Resources
U.S. Steel Keetac
Keewatin, MN



Mod: L:\147204M\Map\Chapter 3\Mineral Resources.mxd