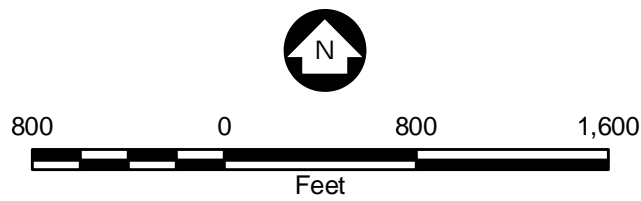


M:\s\147204\Map\GIS\Map\Chapter 6 Significant Impacts\Kelly Lake Noise Receptor Locations.mxd

Legend

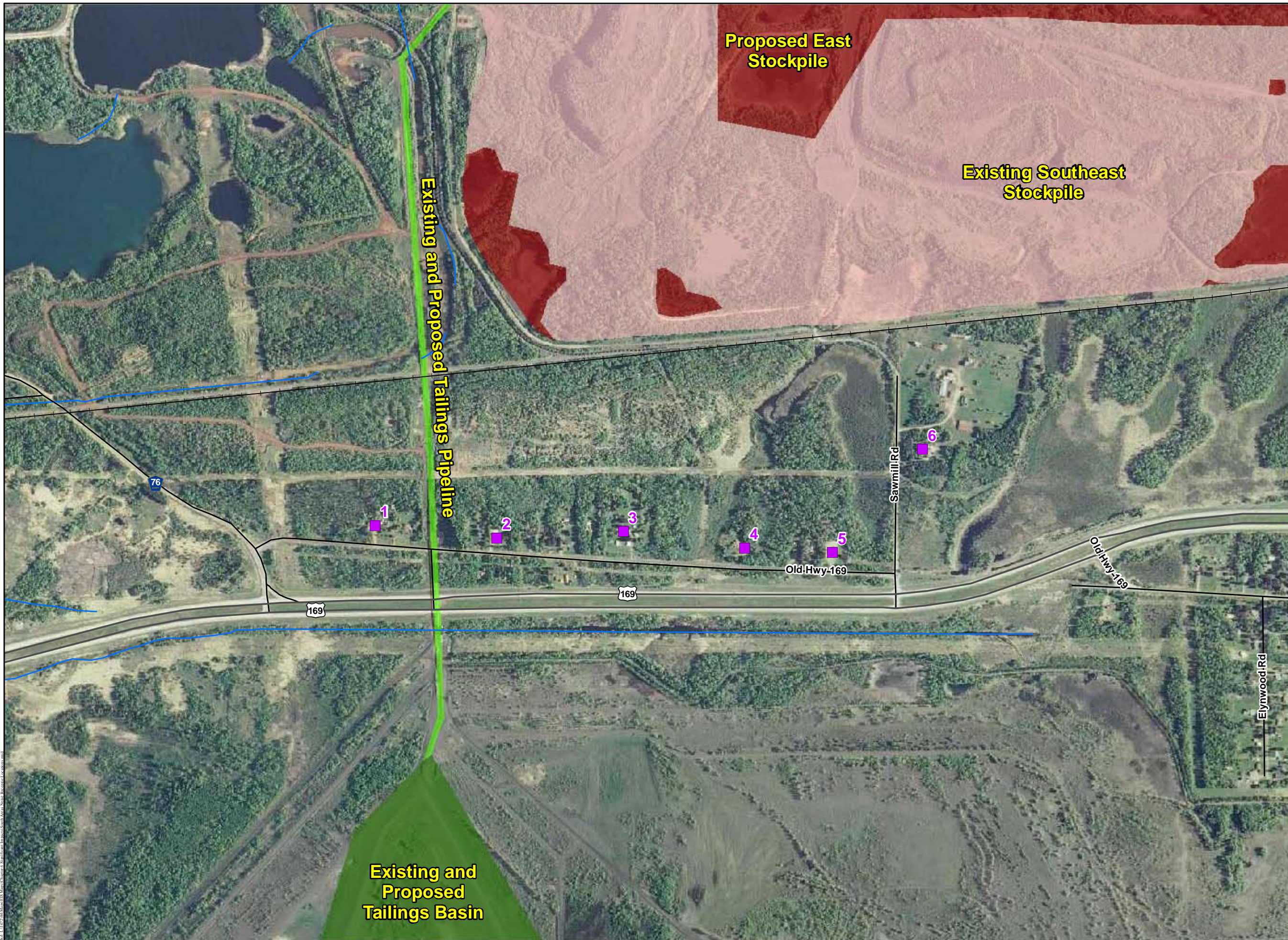
- Noise Receptor Locations
- Project Areas**
- Existing Southeast Stockpile
- Proposed East Stockpile
- Proposed East Mine Pit Expansion
- Streams
- Railroad



Source: USGS, Barr, LMIC, MNDNR, National Hydro Dataset, MPCA, Itasca County, St. Louis County, City of Hibbing, City of Nashauk, U.S. Steel, and Mn/DOT. 2008 Aerial Photograph

Figure 6.9.1
 Kelly Lake Noise
 Receptor Locations
 U.S. Steel Keetac
 Keewatin, MN





Legend

- Noise Receptor Locations
- Project Areas**
- Existing Southeast Stockpile
- Proposed East Stockpile
- Tailings Basin
- Tailings Pipeline
- Streams
- +— Railroad



Source: USGS, Barr, LMIC, MNDNR, National Hydro Dataset, MPCA, Itasca County, St. Louis County, City of Hibbing, City of Nashauk, U.S. Steel, and Mn/DOT. 2008 Aerial Photograph

Figure 6.9.2
South Area Noise
Receptor Locations
U.S. Steel Keetac
Keewatin, MN

