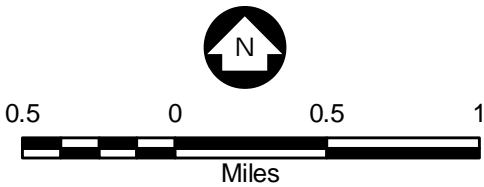


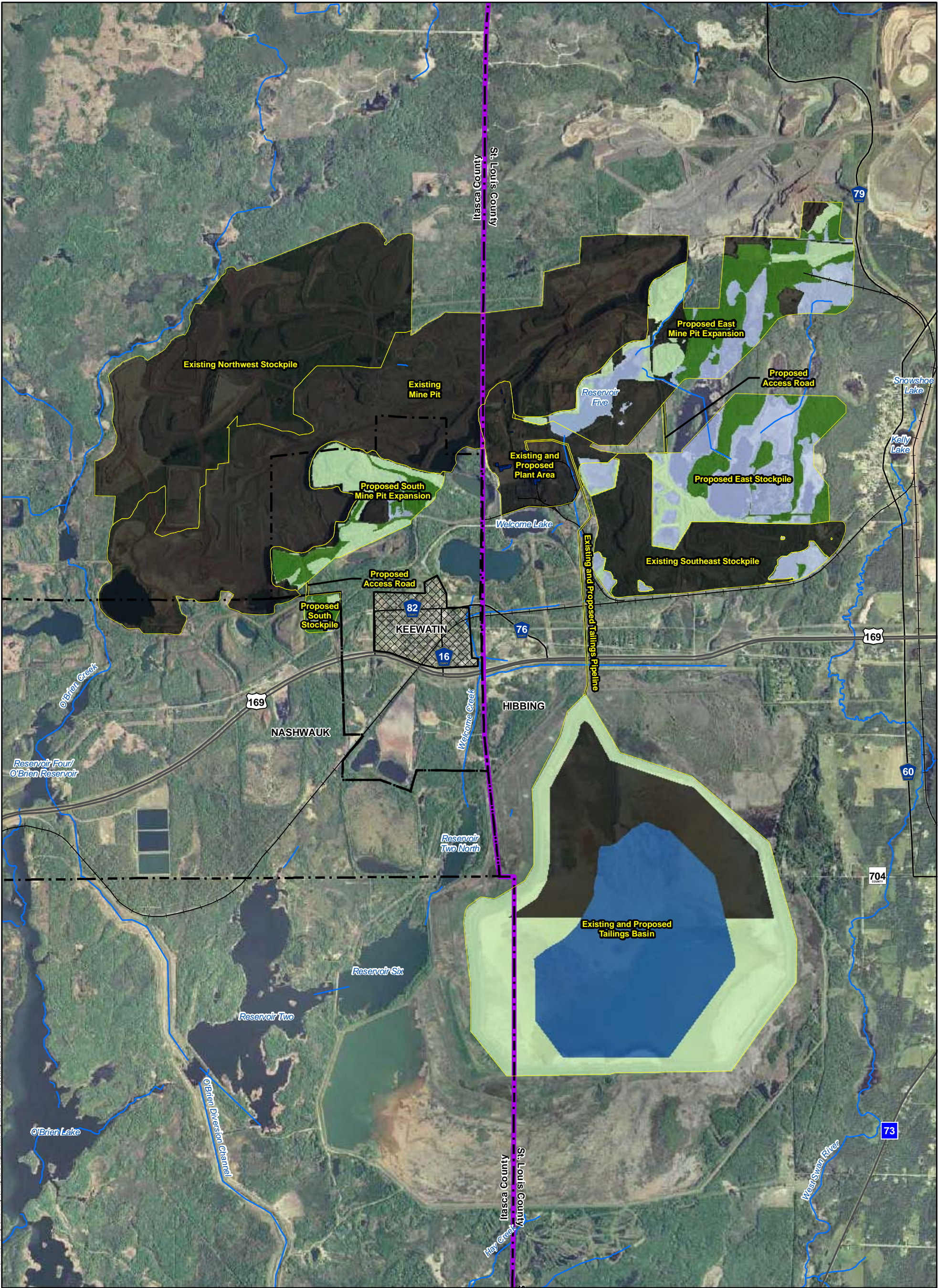
- Legend**
- Project Areas
 - Keewatin Urban Development
 - City Boundary
 - County Boundary
 - Streams
 - Farmland of statewide importance
 - All areas are prime farmland
 - Prime farmland if drained



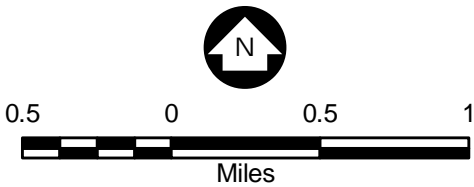
Source: USGS, Barr, LMIC, MNDNR, National Hydro Dataset, MPCA, Itasca County, St. Louis County, City of Hibbing, City of Nashauk, U.S. Steel, and Mn/DOT. 2008 Aerial Photograph

Figure 6.2.1
Prime Farmland Potentially
Impacted by No Action
Alternative and Proposed Project
U.S. Steel Keetac
Keewatin, MN





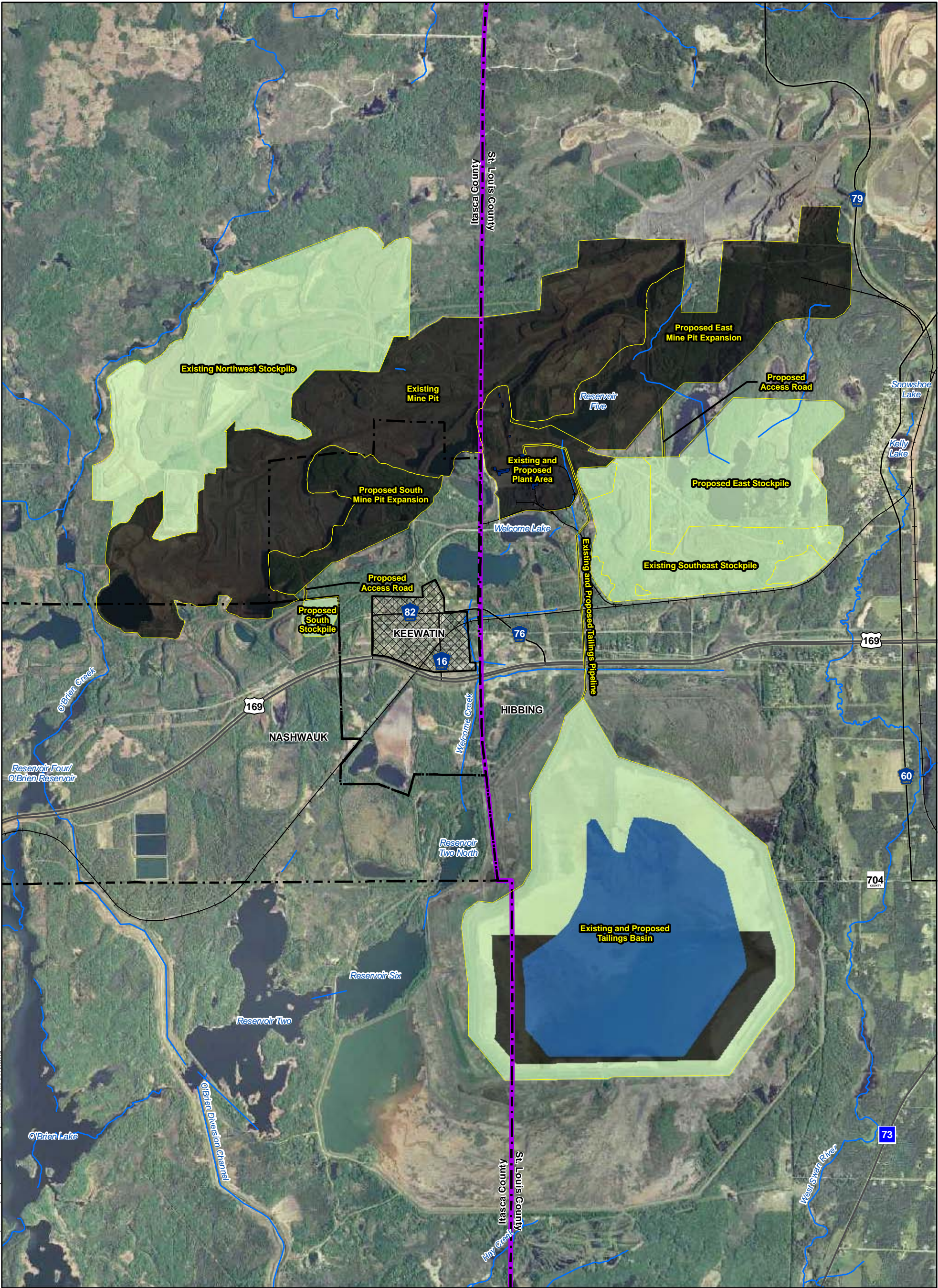
- Legend**
- Project Areas
 - 2021 No Action Alternative Land Cover**
 - Forest
 - Mining Related
 - Open Water
 - Past Mine Feature - Re-Vegetated
 - Wetland
 - Keewatin Urban Development
 - City Boundary
 - County Boundary
 - Streams
 - Railroad



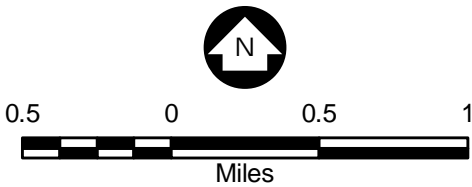
Source: USGS, Barr, LMIC, MNDNR, National Hydro Dataset, MPCA, Itasca County, St. Louis County, City of Hibbing, City of Nashauk, U.S. Steel, and Mn/DOT. 2008 Aerial Photograph

Figure 6.2.2
2021 No Action
Alternative Land Cover
U.S. Steel Keetac
Keewatin, MN





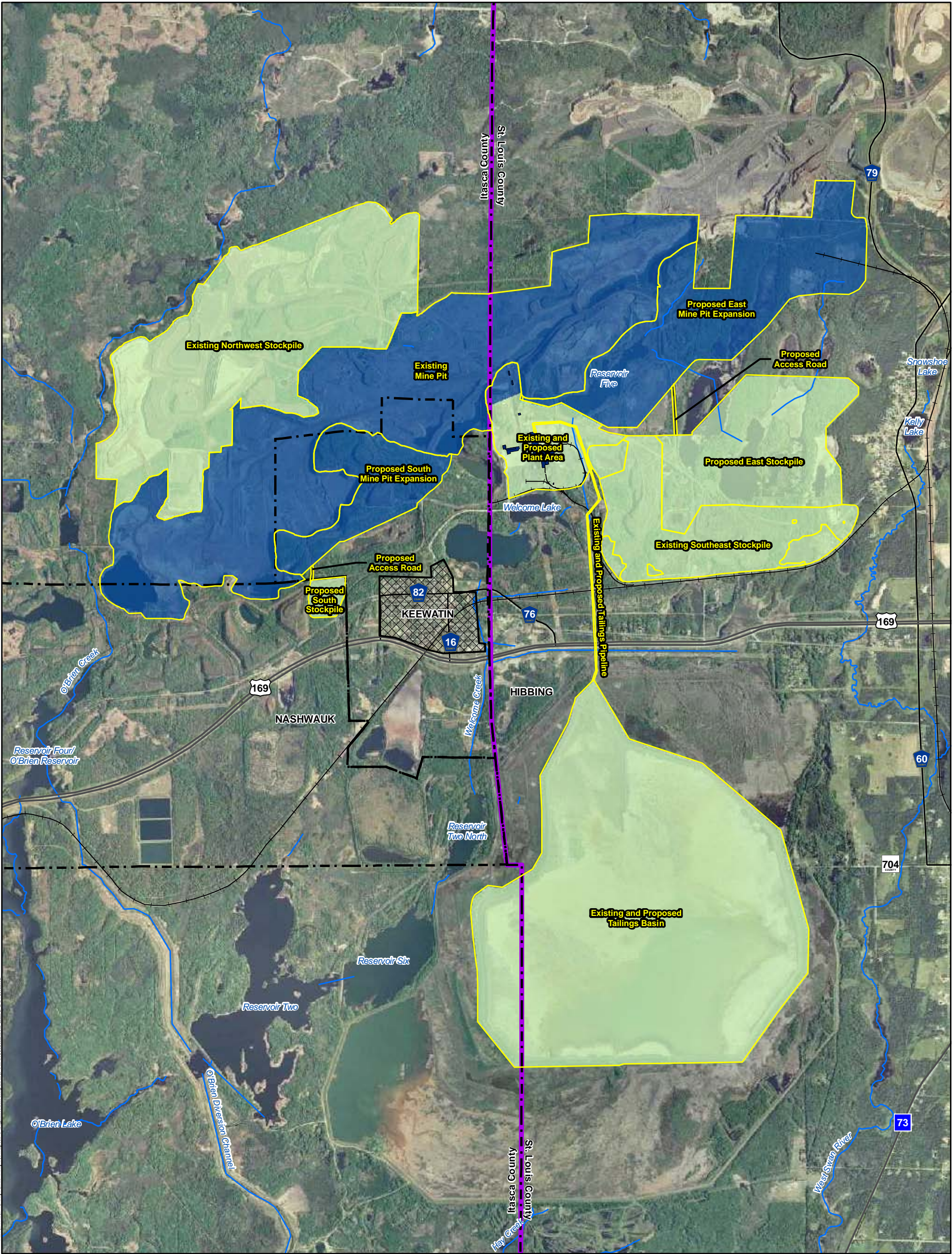
- Legend**
- Project Areas
 - 2036 Land Cover**
 - Forest
 - Mining Related
 - Open Water
 - Past Mine Feature - Re-Vegetated
 - Wetland
 - Keewatin Urban Development
 - City Boundary
 - County Boundary
 - Streams
 - Railroad



Source: USGS, Barr, LMIC, MNDNR, National Hydro Dataset, MPCA, Itasca County, St. Louis County, City of Hibbing, City of Nashauk, U.S. Steel, and Mn/DOT. 2008 Aerial Photograph

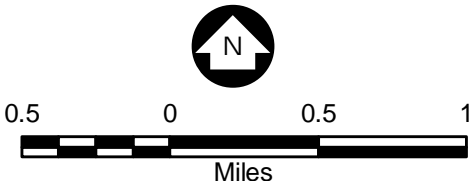
Figure 6.2.3
2036 Land Cover
U.S. Steel Keetac
Keewatin, MN





- Legend**
- Project Areas
 - Post Reclamation Land Cover**
 - Forest
 - Mining Related
 - Open Water
 - Past Mine Feature - Re-Vegetated
 - Wetland
 - Keewatin Urban Development
 - City Boundary
 - County Boundary
 - Streams
 - Railroad

Note: The Post Reclamation Land Cover depicts a worst case scenario in terms of land that would be revegetated. Reclaimed pit walls and the tops of in-pit stockpiles would be revegetated above the final water level. The mine pit would be allowed to naturally re-fill with water to the 1430' (msl) elevation.



Source: USGS, Barr, LMIC, MNDNR, National Hydro Dataset, MPCA, Itasca County, St. Louis County, City of Hibbing, City of Nashwauc, U.S. Steel, and Mn/DOT. 2008 Aerial Photograph

Figure 6.2.4
Post Reclamation
Land Cover
U.S. Steel Keetac
Keewatin, MN

