

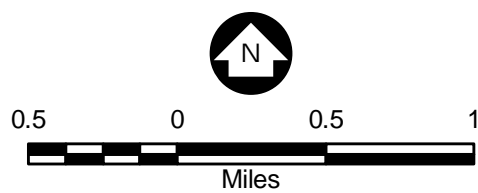
Map: L:\1472\04 Maps\EIS Maps\Chapter 6 Significant Impacts\Figure 6.1.1 Zoning and Nearby Residences.mxd

Legend

Zoning

- No Zoning Map Available
- Residential
- Industrial Zoning District - Mining Allowed
- Public
- Open Space
- Natural Environment Lakes

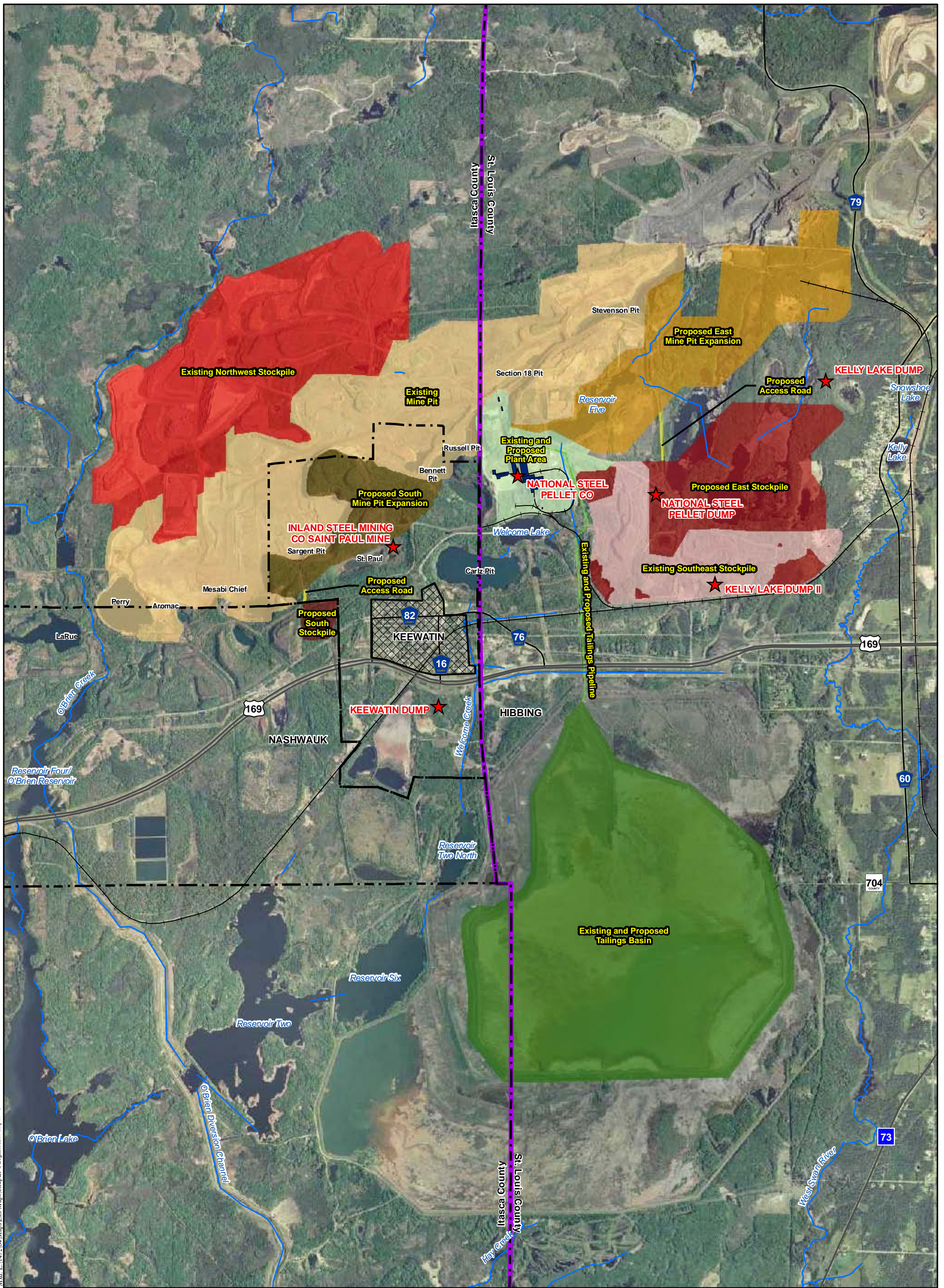
- Current and Proposed Keetac Footprint
- Water bodies
- City Boundary
- County Boundary
- Streams



Source: USGS, Barr, LMIC, MNDNR, National Hydro Dataset, MPCA, Itasca County, St. Louis County, City of Hibbing, City of Nashauk, U.S. Steel, and Mn/DOT. 2008 Aerial Photograph

Figure 6.1.1
Zoning Map
U.S. Steel Keetac
Keewatin, MN





Map: E:\1472\04\Maps\EIS Maps\Chapter 6 Significant Impacts\Environmental Hazards.mxd

Legend

Project Areas

- Existing Southeast Stockpile
- Existing Northwest Stockpile
- Proposed East Stockpile
- Proposed South Stockpile
- Proposed Stockpile Roads
- Existing Mine Pit
- Proposed East Mine Pit Expansion
- Proposed South Mine Pit Expansion
- Plant Area
- Tailings Basin
- Tailings Pipeline

- Keewatin Urban Development
- City Boundary
- County Boundary
- Streams
- Potential Environmental Hazard Sites
- Railroad



Source: USGS, Barr, LMIC, MNDNR, National Hydro Dataset, MPCA, Itasca County, St. Louis County, City of Hibbing, City of Nashauk, U.S. Steel, and Mn/DOT. 2008 Aerial Photograph

Figure 6.1.2
Environmental Hazards
U.S. Steel Keetac
Keewatin, MN

