

Mxd: L:\1472\04\Maps\EIS Maps\Chapter 6 Significant Impacts\Mineral Formations.mxd

Legend

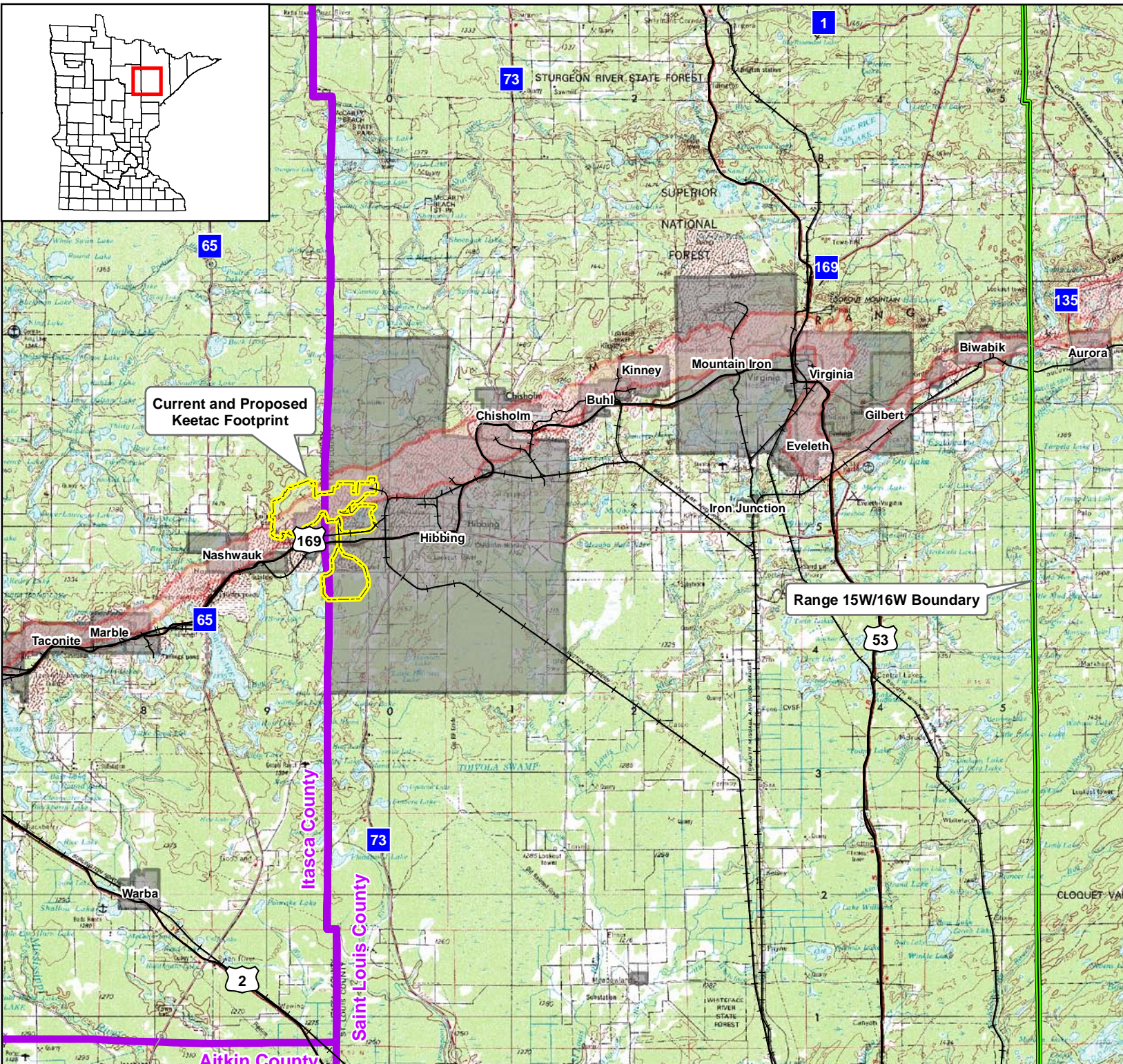
- Project Areas
- Approximate Intrusion
- Approximate Intrusion (Mined out Portion of Pit)
- Approximate Iron Formation Pit Limit
- Surface Crest of Pit
- Biwabik Iron Formation
- Keewatin Urban Development
- City Boundary
- County Boundary
- Streams
- Railroad








Source: USGS, Barr, LMIC, MNDNR, National Hydro Dataset, MPCA, Itasca County, St. Louis County, City of Hibbing, City of Nashauk, U.S. Steel, and Mn/DOT. 2008 Aerial Photograph

Figure 6.17.1
Mineral Formations
U.S. Steel Keetac
Keewatin, MN





Legend

-  Range 15W/16W Boundary
-  Current and Proposed Keetac Footprint
-  County Boundary
-  Biwabik Iron Formation
-  Municipalities



Source: USGS, Barr, LMIC, MNDNR, National Hydro Dataset, MPCA, Itasca County, St. Louis County, City of Hibbing, City of Nashauk, U.S. Steel, and Mn/DOT. 2008 Aerial Photograph

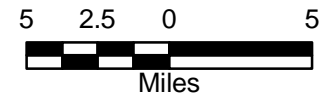


Figure 6.17.2
MndOT Tailings
Acceptance Boundary
U.S. Steel Keetac
Keewatin, MN