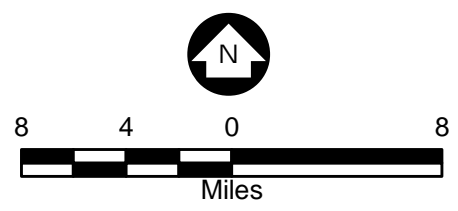


- Legend**
- Iron Range Study Area
  - Current and Proposed Keetac Footprint
  - DNR 2007 Mine Features
  - City Boundary
  - County Boundary
  - Major Highways

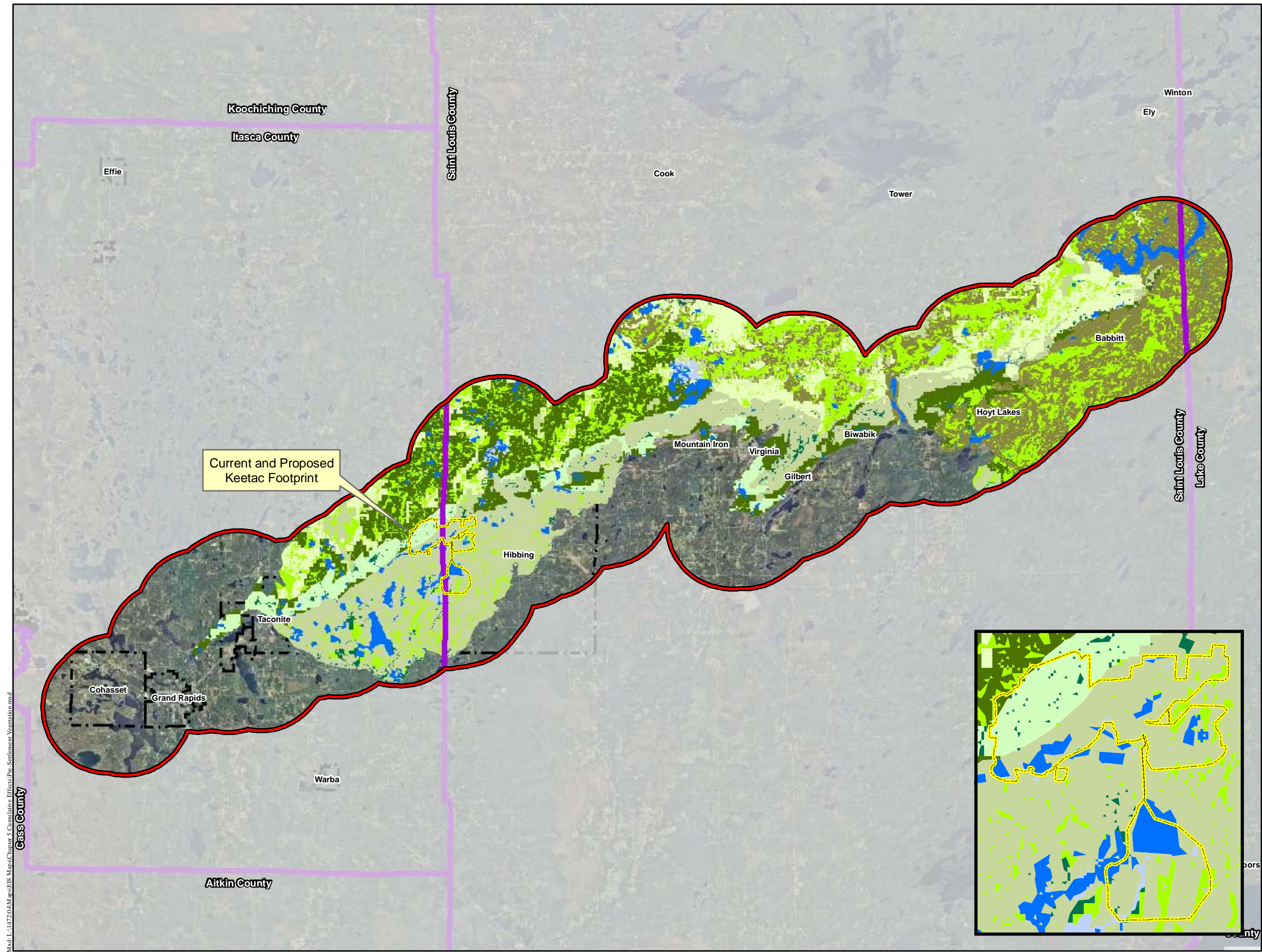


Source: USGS, Barr, LMIC, MNDNR, National Hydro Dataset, MPCA, Itasca County, St. Louis County, City of Hibbing, City of Nashauk, U.S. Steel, and Mn/DOT. 2008 Aerial Photograph

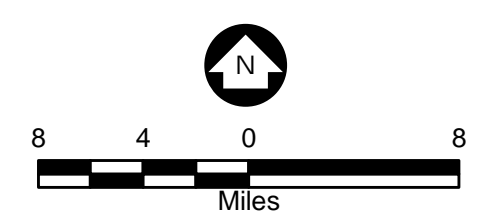


Figure 5.6.1  
Iron Range Study Area  
U.S. Steel Keetac  
Keewatin, MN





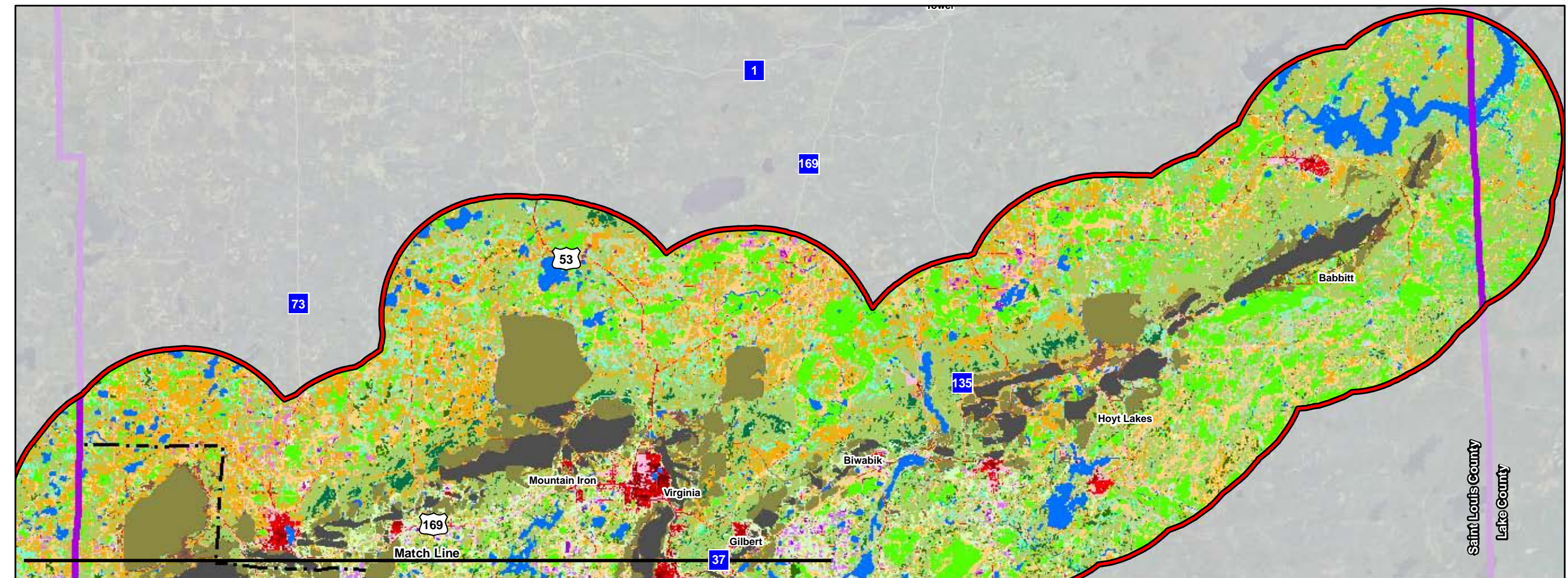
- Legend**
- Iron Range Study Area
  - Current and Proposed Keetac Footprint
  - County Boundary
  - City Boundary
- Pre-Settlement Vegetation (Host and White)**
- Dry mesic jack pine-black spruce
  - Dry-mesic white pine-r. pine
  - Lowland conifer
  - Mesic aspen-birch-fir-spruce
  - Mesic white pine-red pine
  - Non-forested wetland
  - Open water
  - Rich swamp
  - Sugar Maple



Source: USGS, Barr, LMIC, MNDNR, National Hydro Dataset, MPCA, Itasca County, St. Louis County, City of Hibbing, City of Nashauk, U.S. Steel, and Mn/DOT. 2008 Aerial Photograph

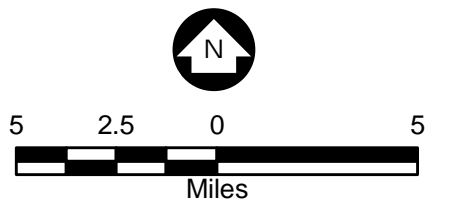
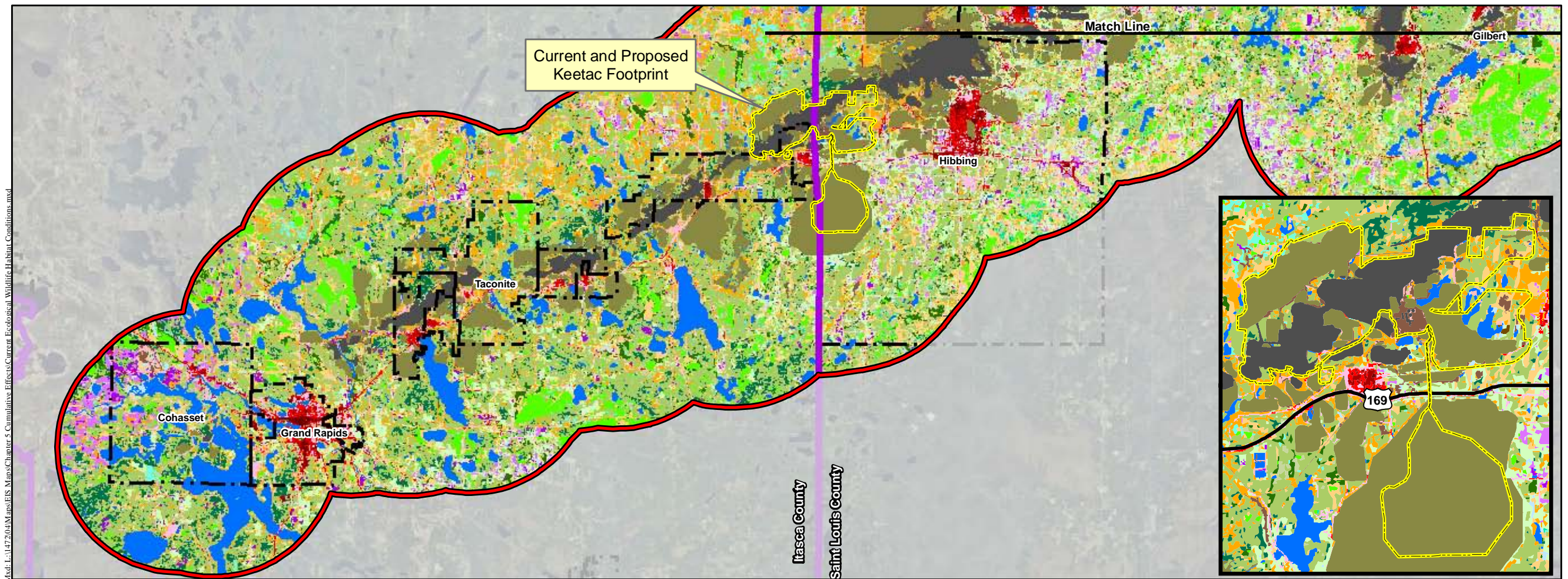
Figure 5.6.2  
Pre-Settlement Vegetation  
U.S. Steel Keetac  
Keewatin, MN





#### Legend

- Iron Range Study Area
  - Current and Proposed Keetac Footprint
  - County Boundary
  - City Boundary
- Existing Land Cover**
- 2007 DNR Mine Feature Shapefile - High Impact
  - 2007 DNR Mine Feature Shapefile - Moderate Impact
  - 20' buffer of MnDOT Railroads - Moderate Impact
  - USGS NLCD 2001 - Barren Land (Rock/Sand/Clay)
  - GAP-Barren Land
  - USGS NLCD 2001 - Developed High Intensity
  - USGS NLCD 2001 - Developed Medium Intensity
  - USGS NLCD 2001 - Developed Low Intensity
  - GAP-Mixed Development
  - USGS NLCD 2001 - Developed Open Space
  - Cropland
  - USGS NLCD 2001 - Cultivated Crops
  - Aquatic (Open Water)
  - Grassland
  - Lowland Conifer Forest
  - Lowland Conifer-Deciduous mix
  - Lowland Deciduous Forest
  - Lowland Shrub
  - Marsh
  - Aspen/White Birch
  - Pine
  - Upland Conifer Forest
  - Upland Conifer-Deciduous mix
  - Upland Deciduous Forest
  - Upland Shrub



Source: USGS, Barr, LMIC, MNDNR, National Hydro Dataset, MPCA, Itasca County, St. Louis County, City of Hibbing, City of Nashwauk, U.S. Steel, and Mn/DOT. 2008 Aerial Photograph






**Figure 5.6.3**  
Current Ecological Wildlife  
Habitat Conditions  
U.S. Steel Keetac  
Keewatin, MN

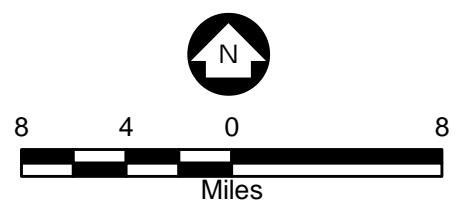


Mod. L:\1472\04\Maps\EIS Maps\Chapter 5 Cumulative Effects\Wildlife Travel Corridors.mxd



**Legend**

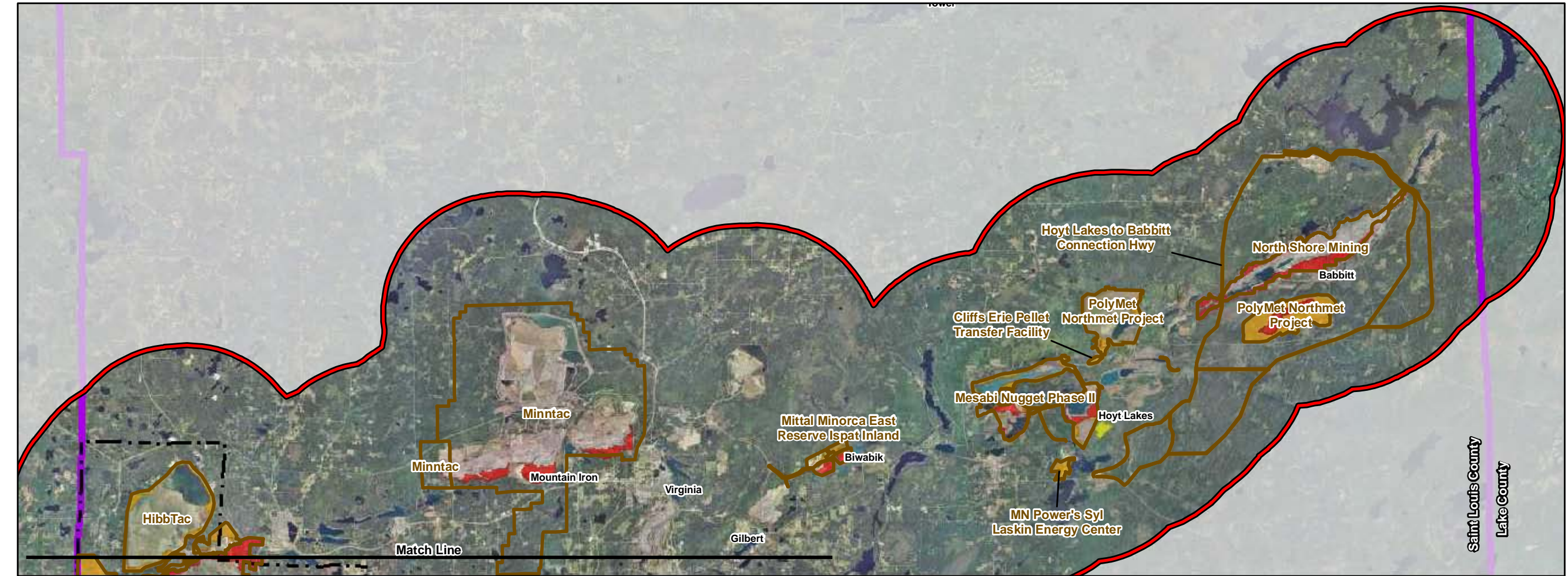
-  Current and Proposed Keetac Footprint
-  Iron Range Study Area
-  County Boundary
-  High Quality Corridors
-  Moderate Quality Corridors



Source: USGS, Barr, LMIC, MNDNR, National Hydro Dataset, MPCA, Itasca County, EOR, St. Louis County, City of Hibbing, City of Nashauk, U.S. Steel, and Mn/DOT. 2008 Aerial Photograph

Figure 5.6.4  
Existing Wildlife  
Travel Corridors  
U.S. Steel Keetac  
Keewatin, MN



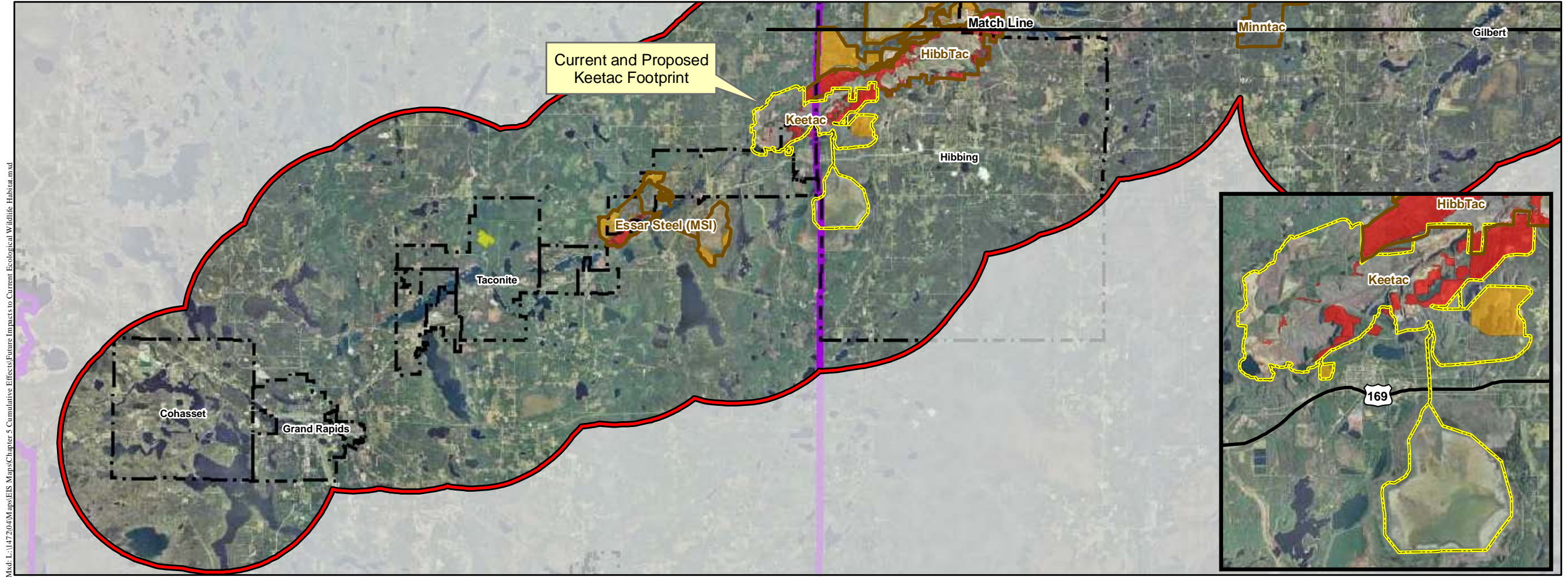


**Legend**

- Current and Proposed Keetac Footprint
- Iron Range Study Area
- County Boundary
- City Boundary
- Future Project Boundaries

**Future Project Impact Areas**

- High
- Moderate
- Other

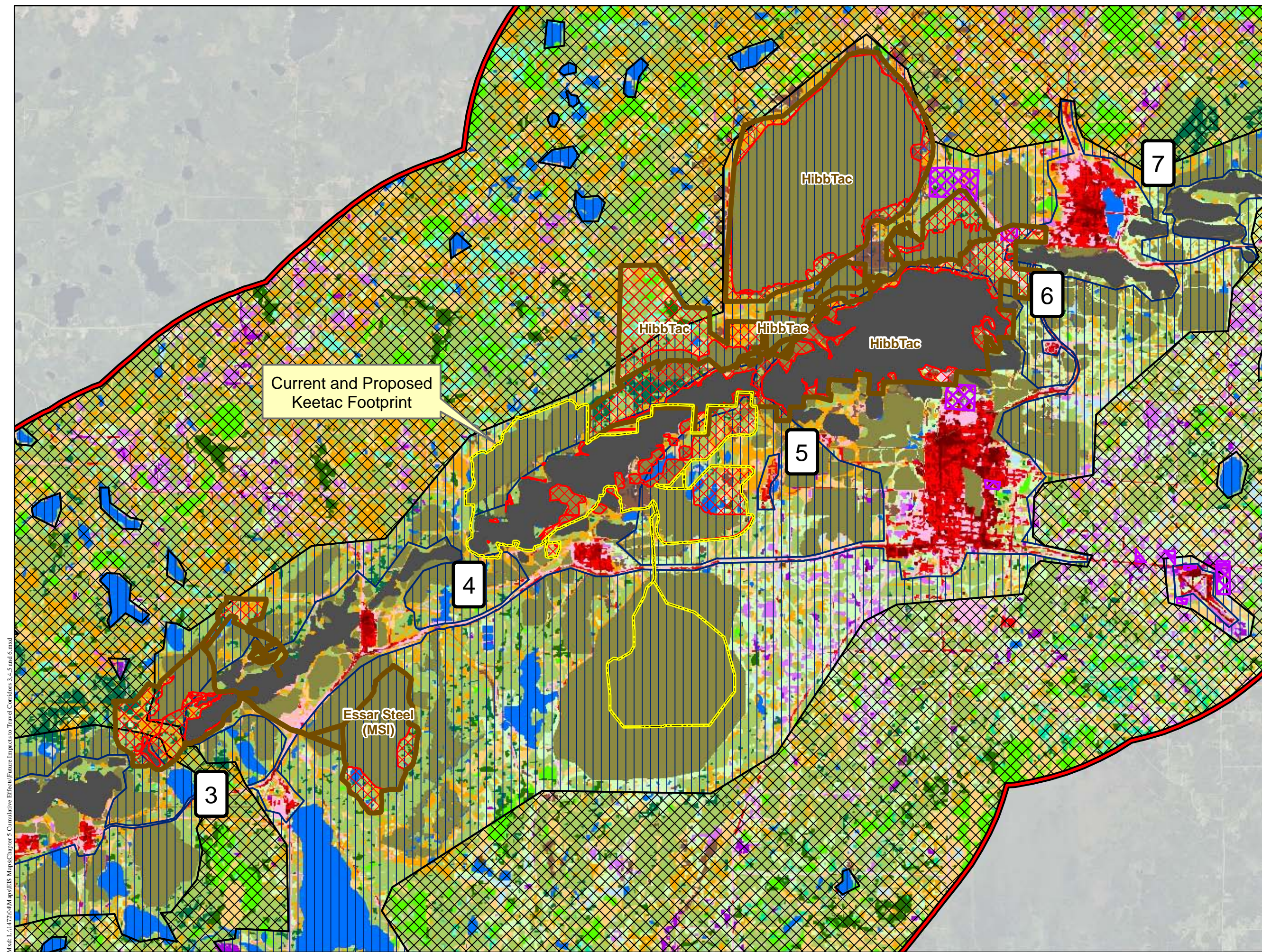


Source: USGS, Barr, LMIC, MNDNR, National Hydro Dataset, MPCA, Itasca County, St. Louis County, City of Hibbing, City of Nashauk, U.S. Steel, and Mn/DOT. 2008 Aerial Photograph

**Figure 5.6.5**  
 Future Impacts to Current  
 Ecological Wildlife Habitat  
 U.S. Steel Keetac  
 Keewatin, MN



Model LA147204Maps\GIS Maps\Chapter 5 Cumulative Effects\Future Impacts to Travel Corridors 3,4,5 and 6.mxd



**Legend**

- Current and Proposed Keetac Footprint
- Iron Range Study Area
- Future Project Boundaries
- Future Project Impacts
- Potential Impacts
- Existing Wildlife Corridors**
  - High Quality Corridors
  - Moderate Quality Corridors
- Existing Land Cover**
  - 2007 DNR Mine Feature Shapefile - High Impact
  - 2007 DNR Mine Feature Shapefile - Moderate Impact
  - 20' buffer of MnDOT Railroads - Moderate Impact
  - USGS NLCD 2001 - Barren Land (Rock/Sand/Clay)
  - GAP-Barren Land
  - USGS NLCD 2001 - Developed High Intensity
  - USGS NLCD 2001 - Developed Medium Intensity
  - USGS NLCD 2001 - Developed Low Intensity
  - GAP-Mixed Development
  - USGS NLCD 2001 - Developed Open Space
  - Cropland
  - USGS NLCD 2001 - Cultivated Crops
  - Aquatic (Open Water)
  - Grassland
  - Lowland Conifer Forest
  - Lowland Conifer-Deciduous mix
  - Lowland Deciduous Forest
  - Lowland Shrub
  - Marsh
  - Aspen/White Birch
  - Pine
  - Upland Conifer Forest
  - Upland Conifer-Deciduous mix
  - Upland Deciduous Forest
  - Upland Shrub

Source: USGS, Barr, LMIC, MNDNR, National Hydro Dataset, MPCA, Itasca County, EOR, St. Louis County, City of Hibbing, City of Nashwauk, U.S. Steel, and Mn/DOT. 2008 Aerial Photograph

**Figure 5.6.6**  
**Future Impacts to Travel**  
**Corridors 3,4,5 and 6**  
**U.S. Steel Keetac**  
**Keewatin, MN**

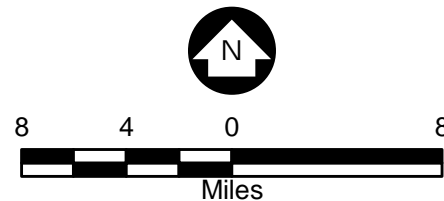


**Legend**

- Iron Range Study Area
- Current and Proposed Keetac Footprint
- County Boundary

**Future Wildlife Corridors**

- High Quality Corridors
- Moderate Quality Corridors
- Unaffected Corridors
- Partially-Impacted Corridors
- Eliminated Corridors



Source: USGS, Barr, LMIC, MNDNR, National Hydro Dataset, MPCA, Itasca County, EOR, St. Louis County, City of Hibbing, City of Nashwauk, U.S. Steel, and Mn/DOT. 2008 Aerial Photograph

Figure 5.6.7  
Future Wildlife  
Travel Corridors  
U.S. Steel Keetac  
Keewatin, MN



Map: 1-1-17-2018-Minnesota-Maps-Chinese-5-Cumulative-Effects-Plan-Wildlife-Travel-Corridors.mxd