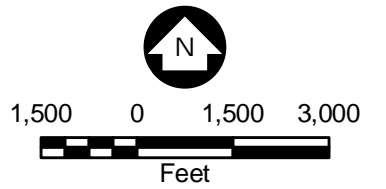


Legend

- Wild Rice Survey Location
- Water Quality Monitoring Location
- City Boundaries
- Roads
- Streams



Source: USGS, Barr, LMIC, MNDNR, National Hydro Dataset, MPCA, Itasca County, St. Louis County, City of Hibbing, City of Nashwauk, U.S. Steel, and Mn/DOT. 2008 Aerial Photograph

Figure 5.4.1
2009 Water Quality and Wild
Rice Monitoring Locations
U.S. Steel Keetac
Keewatin, MN



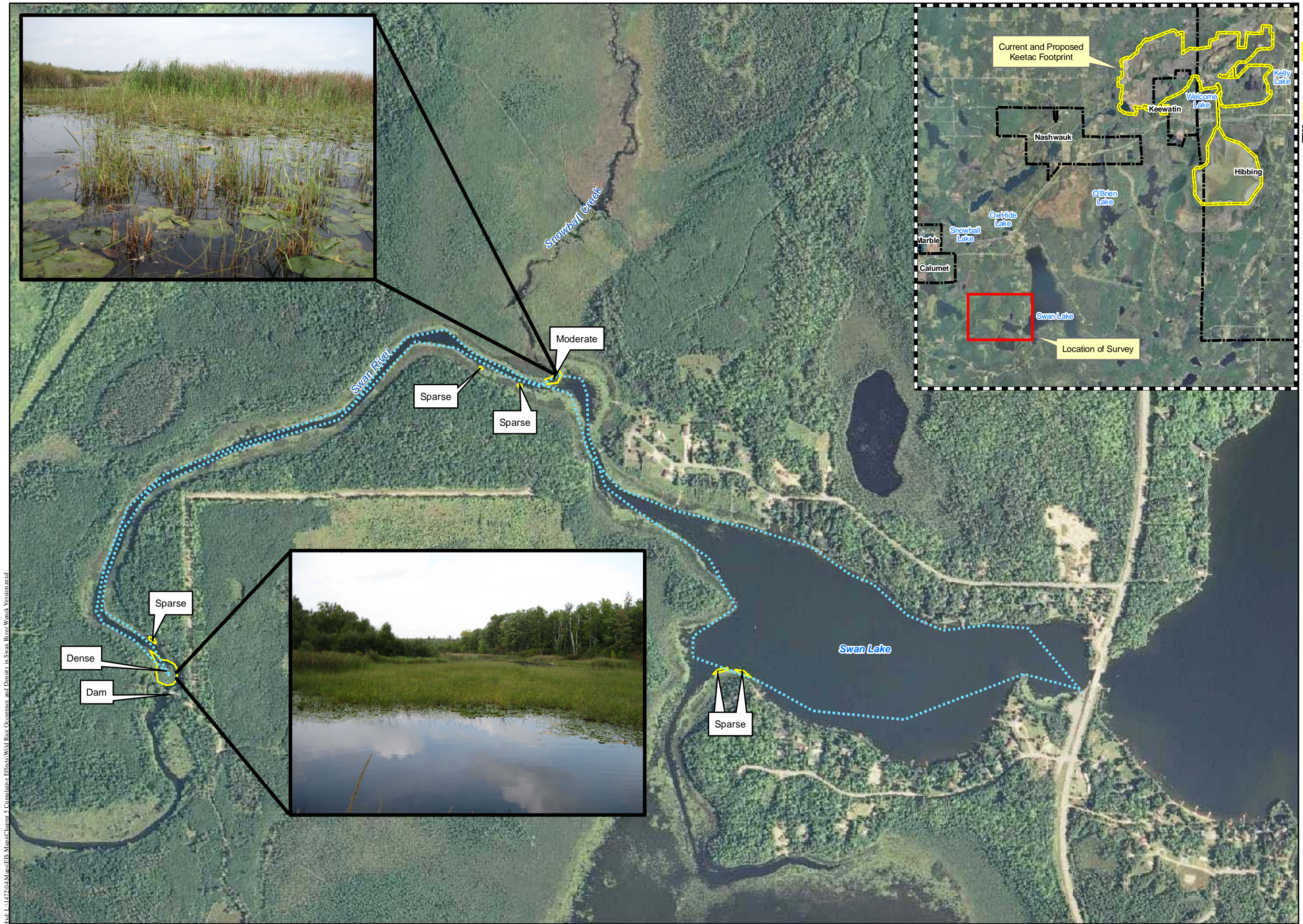
Map 1-11-17-2014 Mpls-St. Paul Chapter 5 Cumulative Effects Wild Rice Monitoring Locations.mxd



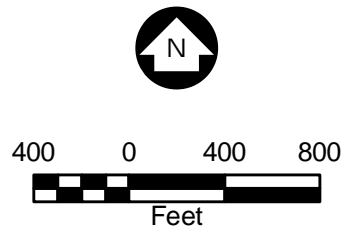
Figure 5.4.2
Ground Wild Rice Survey
Results for Swan Lake
SW Bay, Moose and
Hay Lakes
U.S. Steel Keetac
Keewatin, MN



Mxd: I:\1472\04\Map\GIS Maps\Chapter 5 Cumulative Effects\Wild Rice Occurrence and Density in Swan River Wrench Version.mxd



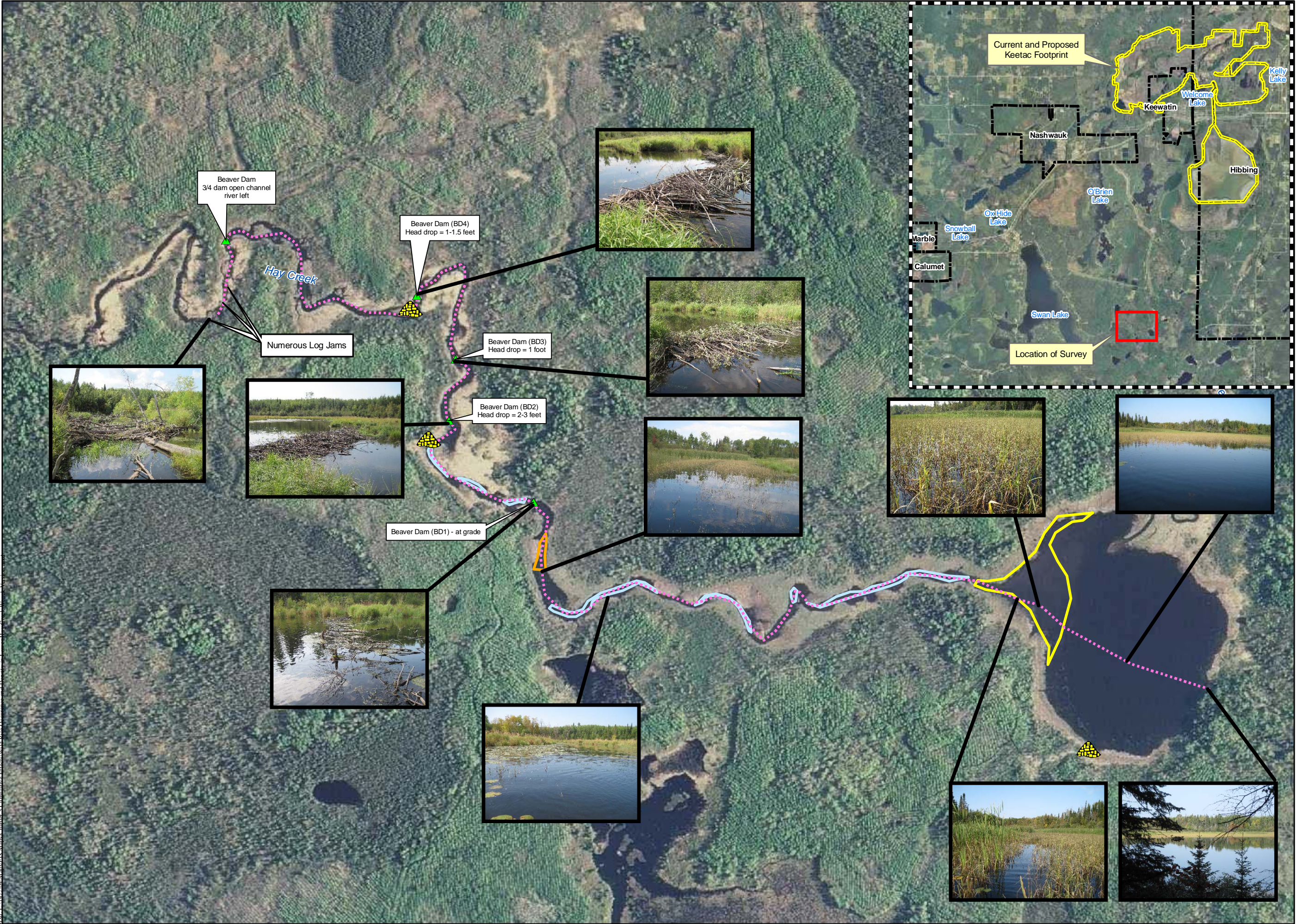
- Legend**
- Current and Proposed Keetac Footprint
 - Wild Rice Survey Routes
 - Wild Rice Extents
 - City Boundary



Source: USGS, Barr, LMIC, MNDNR, National Hydro Dataset, MPCA, Itasca County, St. Louis County, City of Hibbing, City of Nashwauk, U.S. Steel, and Mn/DOT. 2008 Aerial Photograph

Figure 5.4.3
Wild Rice (*Zizania* sp.)
Occurrence and Density
in the Swan River (Swan
Lake Outlet to the Dam)
September 11, 2009
U.S Steel Keetac
Keewatin, MN





Legend

- Beaver Lodges
- Beaver Dams
- Current and Proposed Keetac Footprint
- Wild Rice Survey Routes
- Wild Rice Density**
 - Abundant
 - Moderate
 - Sparse
- City Boundary

North arrow pointing up with 'N'.

Scale bar: 250 0 250 500 Feet

Source: USGS, Barr, LMIC, MNDNR, National Hydro Dataset, MPCA, Itasca County, St. Louis County, City of Hibbing, City of Nashwauk, U.S. Steel, and Mn/DOT. 2008 Aerial Photograph

Figure 5.4.4
Wild Rice (*Zizania* sp.)
Occurrence and Density
in Lower Hay Creek (Hay
Lake to upstream of
confluence with Moose
Creek Outlet)
September 15, 2009
U.S Steel Keetac
Keewatin, MN

