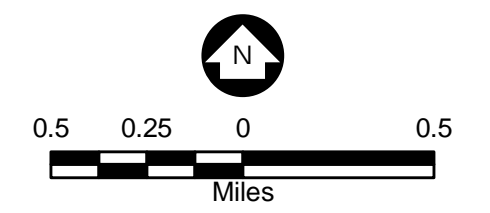


- Legend**
- Ambient Air Quality Boundary
 - Project Areas**
 - Existing Southeast Stockpile
 - Existing Northwest Stockpile
 - Proposed East Stockpile
 - Proposed South Stockpile
 - Proposed Stockpile Roads
 - Existing Mine Pit
 - Proposed East Mine Pit Expansion
 - Proposed South Mine Pit Expansion
 - Plant Area
 - Tailings Basin
 - Tailings Pipeline
 - Keewatin Urban Development
 - County Boundary
 - City Boundary
 - Streams
 - Railroad

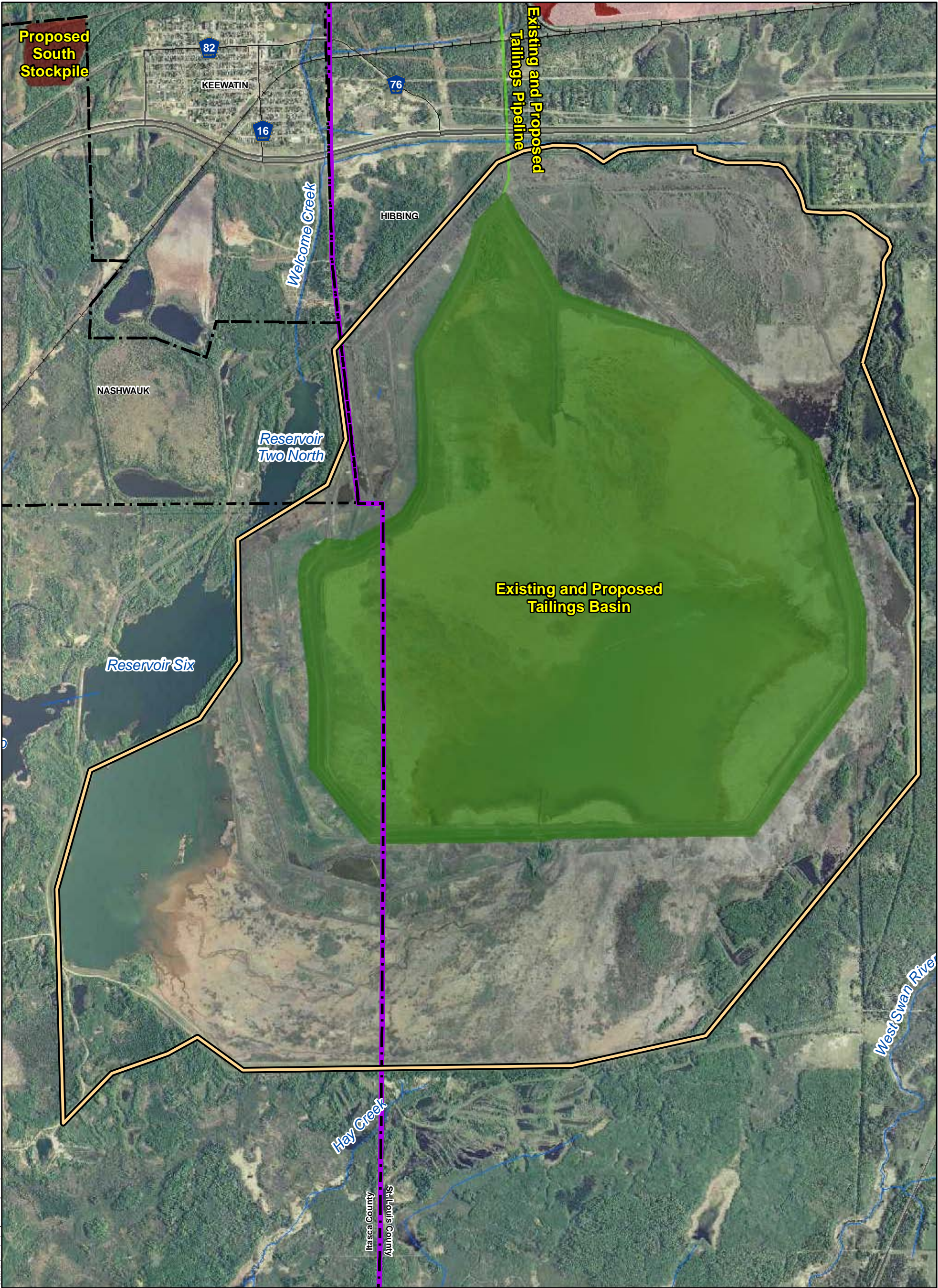


Source: USGS, Barr, LMIC, MNDNR, National Hydro Dataset, MPCA, Itasca County, St. Louis County, City of Hibbing, City of Nashwauk, U.S. Steel, and Mn/DOT. 2008 Aerial Photograph

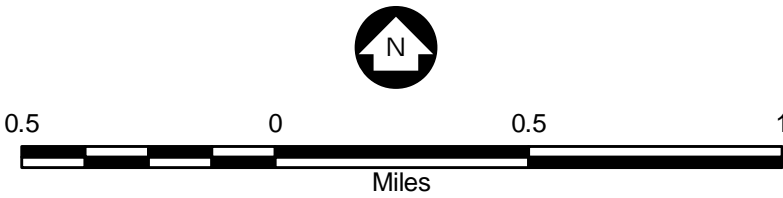
Figure 4.7.6.1
Plant Site Ambient Air
Quality Boundary
U.S. Steel Keetac
Keewatin, MN



\\sl-l-1\7204\Map\GIS Maps\Chapter 4 Affected Env and Env Consequences\Plan Site AA QB.mxd



- Legend**
- Project Areas**
- Existing Southeast Stockpile
 - Proposed East Stockpile
 - Proposed South Stockpile
 - Tailings Basin
 - Tailings Pipeline
 - Ambient Air Quality Boundary
 - City Boundary
 - County Boundary
 - Streams

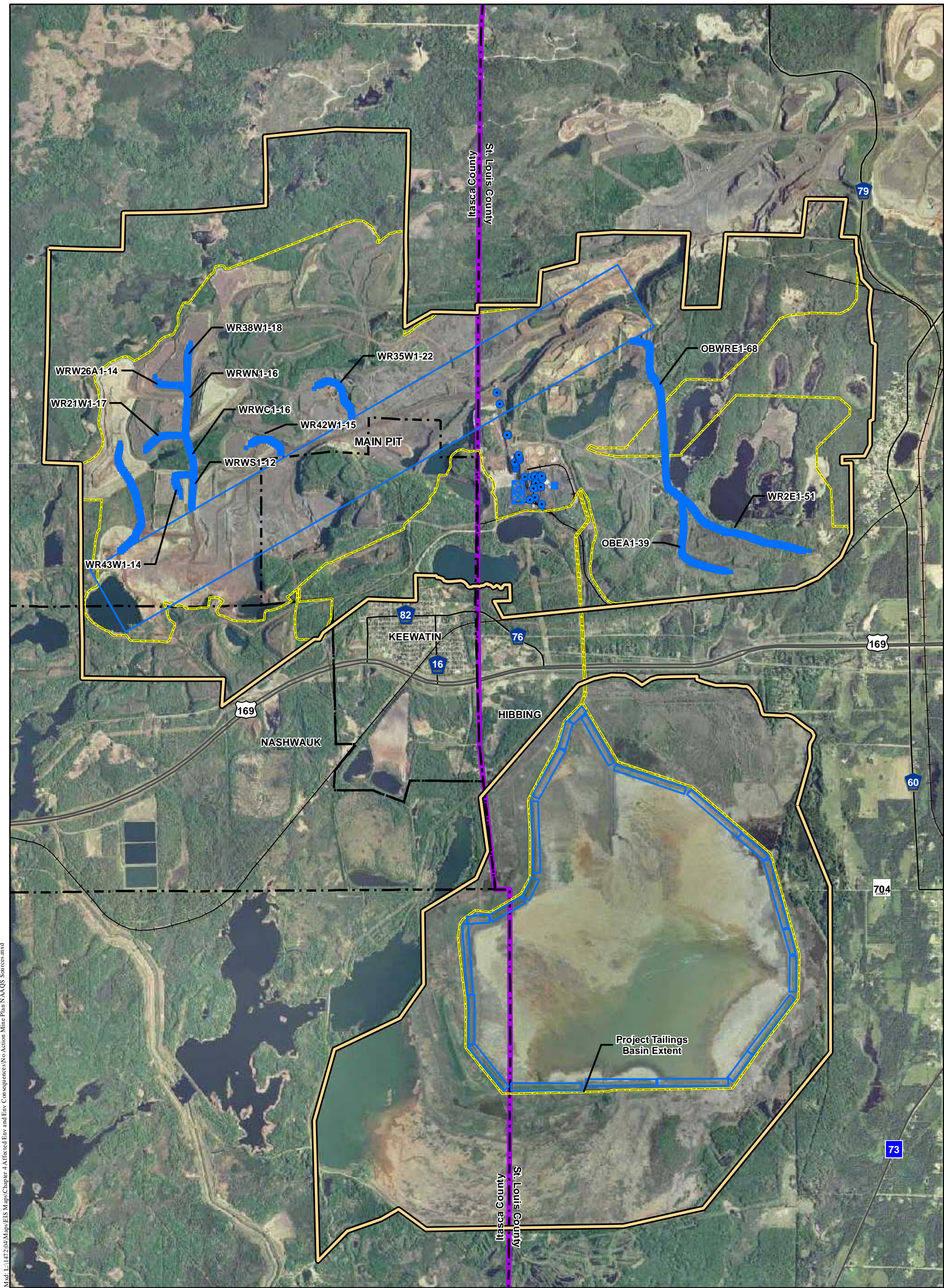


Source: USGS, Barr, LMIC, MNDNR, National Hydro Dataset, MPCA, Itasca County, St. Louis County, City of Hibbing, City of Nashauk, U.S. Steel, and Mn/DOT. 2008 Aerial Photograph

Figure 4.7.6.2
Tailings Basin Ambient
Air Quality Boundary
U.S. Steel Keetac
Keewatin, MN



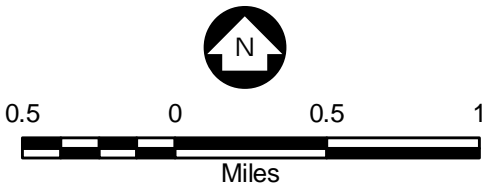
Mxd: L:\147204\Maps\EIS Maps\Chapter 4 Affected Env and Env Consequences\Tailings Basin AAQB.mxd



Mxd: L:\1472\04\Maps\EIS Maps\Chapter 4 A Affected Env and Env Consequences\No Action Mine Plan NAAQS Sources.mxd

Legend

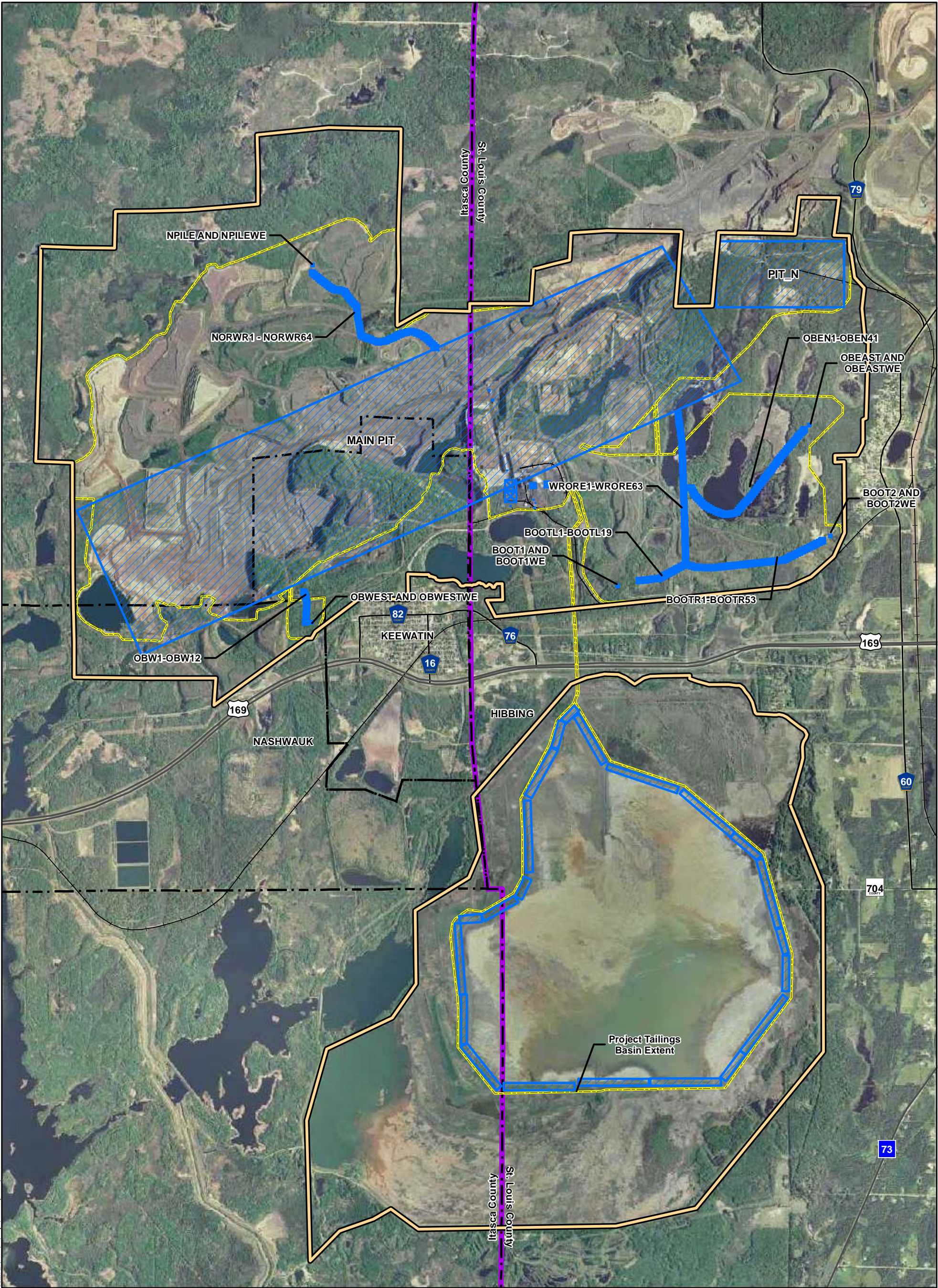
- Current and Proposed Keetac Footprint
- Ambient Air Quality Boundary
- No Action Alternative Sources
- No Action Alternative Sources
- No Action Sources
- City Boundary
- County Boundary
- Railroad



Source: USGS, Barr, LMIC, MNDNR, National Hydro Dataset, MPCA, Itasca County, St. Louis County, City of Hibbing, City of Nashwauc, U.S. Steel, and Mn/DOT. 2008 Aerial Photograph

Figure 4.7.6.3
No Action Mine Plan
NAAQS Sources
U.S. Steel Keetac
Keewatin, MN





Legend

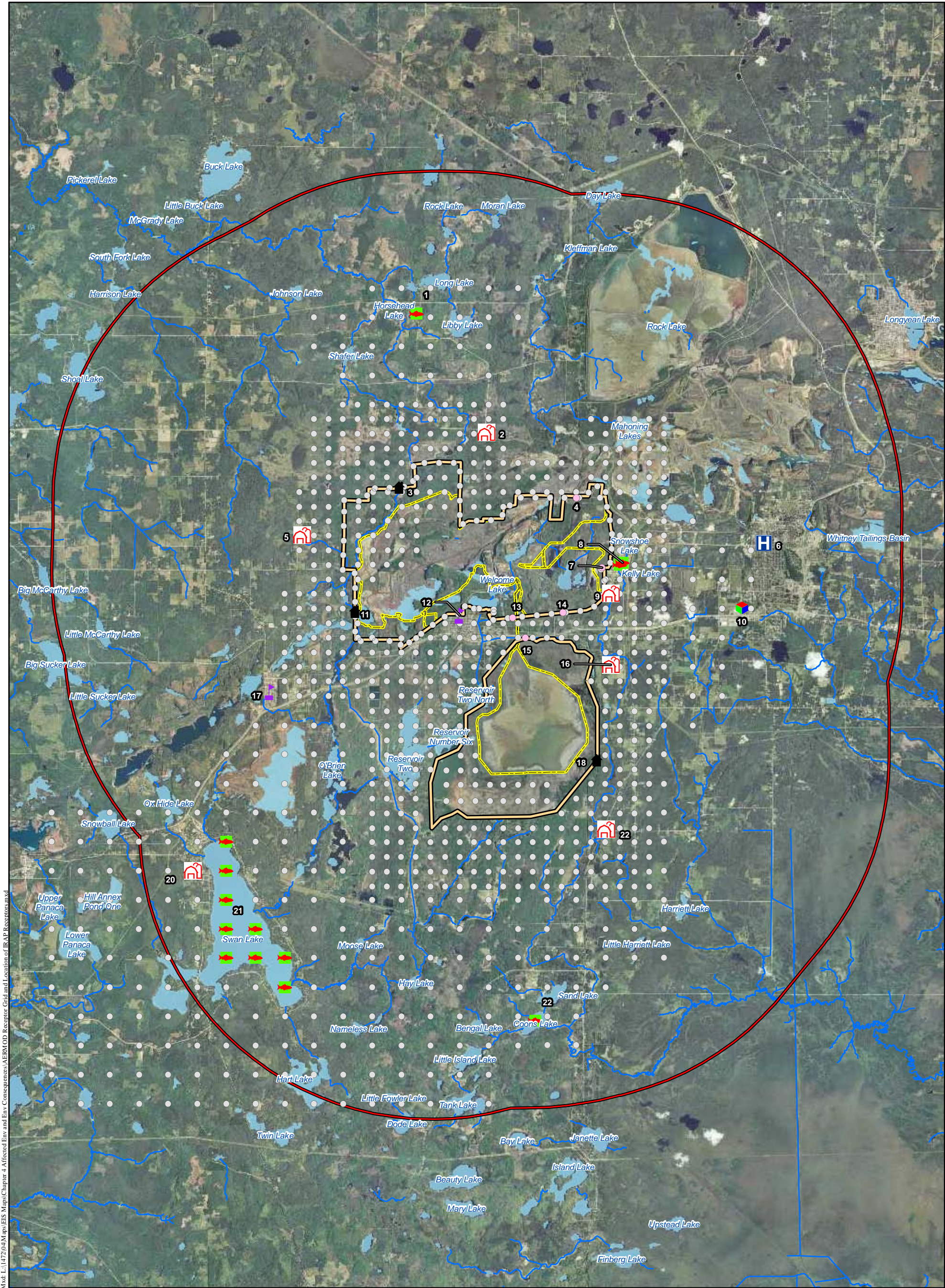
- Current and Proposed Keetac Footprint
- Ambient Air Quality Boundary
- NAAQS Sources
- NAAQS Sources
- City Boundary
- County Boundary



Source: USGS, Barr, LMIC, MNDNR, National Hydro Dataset, MPCA, Itasca County, St. Louis County, City of Hibbing, City of Nashauk, U.S. Steel, and Mn/DOT. 2008 Aerial Photograph

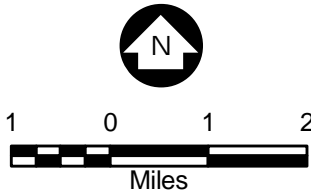
Figure 4.7.6.4
Mine NAAQS Sources
U.S. Steel Keetac
Keewatin, MN





Mod: L:\147204M\Maps\EIS Maps\Chapter 4 Affected Env and Env Consequences\AERMOD Receptor Grid and Location of IRAP Receptors.mxd

- Legend**
 - Ambient Air Quality Boundary
 - 10 Kilometer Radius
 - Current and Proposed Keetac Footprint
 - Streams
 - Water Bodies
 - AERMOD Receptor Node
 - Max SO2 PM10 Receptor
 - Lake Receptor
 - Day Care Receptor
 - Elementary School Receptor
 - Nursing Home Receptor
 - Subsistence Farmer
 - Potential Resident Receptor



Source: USGS, Barr, LMIC, MNDNR, MP&A, Itasca County, St. Louis County, City of Hibbing, City of Nashauk, U.S. Steel, and Mn/DOT. 2008 Aerial Photograph

Figure 4.7.8.1
AERMOD Receptor Grid
and Location of IRAP Receptors
U.S. Steel Keetac
Keewatin, MN

