

M:\d-1\147204\Maps\EIS Maps\Chapter 4 Affected Env and Env Consequences\Wetland Impacts\No Action Alternative.mxd

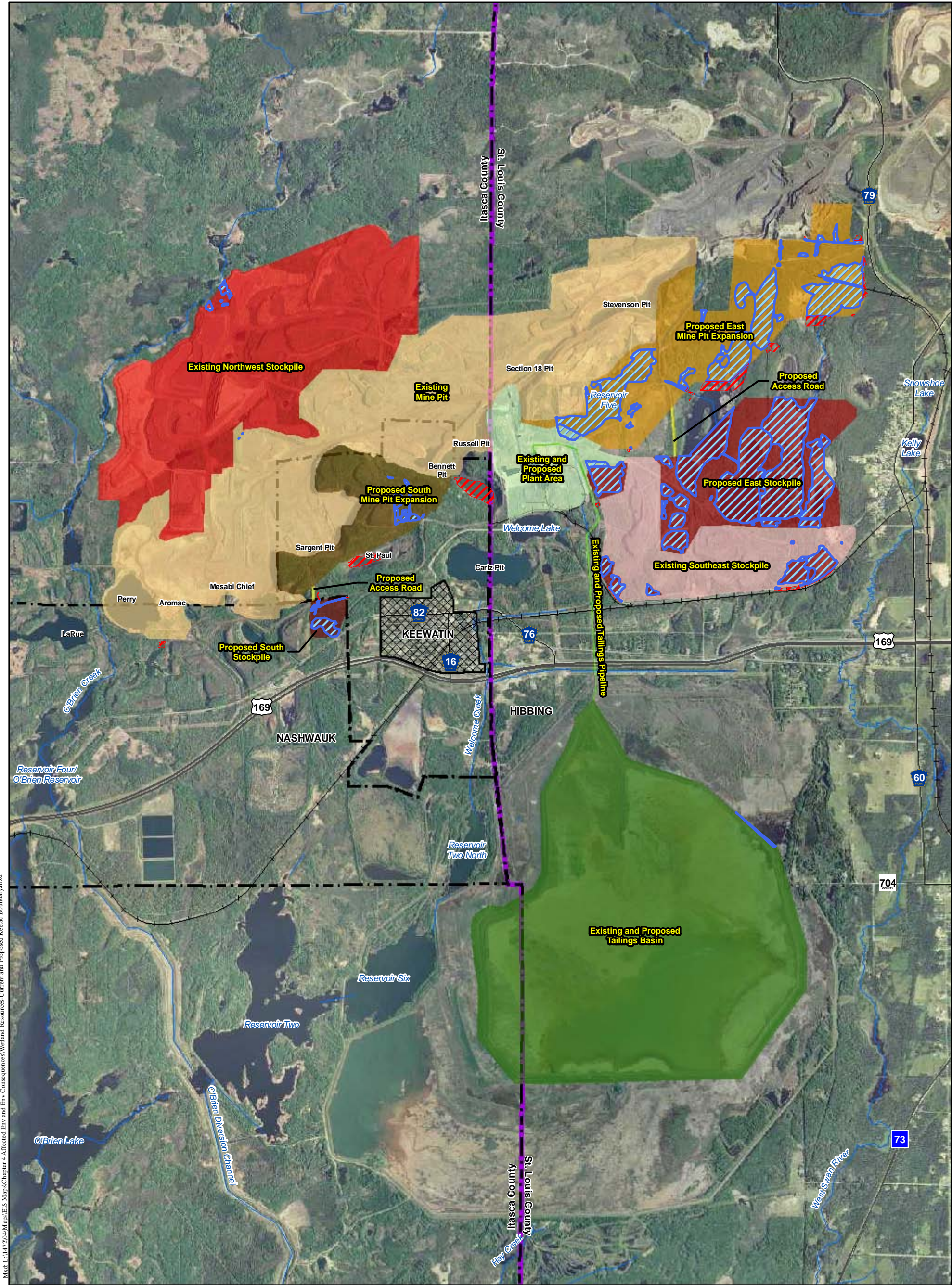
- Legend**
- Current and Proposed Keetac Footprint
  - No Action Alternative Boundary
  - Direct Wetland Impact
  - Indirect Wetland Impact
  - County Boundary
  - City Boundary
  - Keewatin Urban Development
  - Railroad
  - Streams

Source: USGS, Barr, LMIC, MNDNR, National Hydro Dataset, MPCA, Itasca County, St. Louis County, City of Hibbing, City of Nashauk, U.S. Steel, and Mn/DOT. 2008 Aerial Photograph

Figure 4.4.1.1  
Wetland Impacts  
No Action Alternative  
U.S. Steel Keetac  
Keewatin, MN







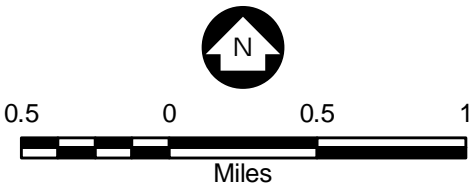
Mxd: L:\147204\Maps\EIS Maps\Chapter 4 Affected Env and Env Consequences\Wetland Resources-Current and Proposed Keetac Boundary.mxd

Legend

Project Areas

- Existing Southeast Stockpile
- Existing Northwest Stockpile
- Proposed East Stockpile
- Proposed South Stockpile
- Proposed Stockpile Roads
- Existing Mine Pit
- Proposed East Mine Pit Expansion
- Proposed South Mine Pit Expansion
- Plant Area
- Tailings Basin
- Tailings Pipeline

- Keewatin Urban Development
- City Boundary
- County Boundary
- Streams
- Direct Wetland Impact
- Indirect Wetland Impact

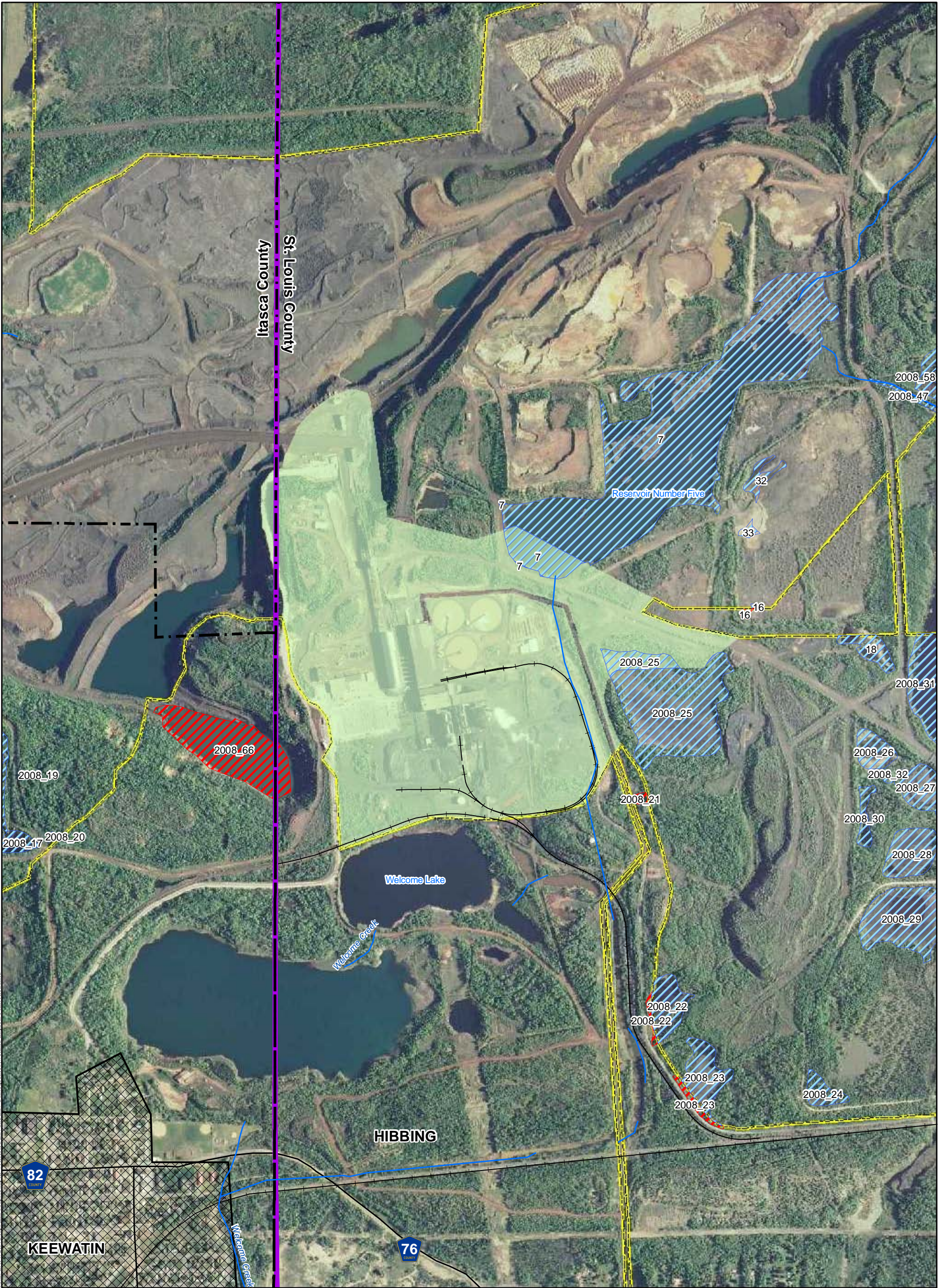


Source: USGS, Barr, LMIC, MNDNR, National Hydro Dataset, MPCA, Itasca County, St. Louis County, City of Hibbing, City of Nashauk, U.S. Steel, and Mn/DOT. 2008 Aerial Photograph

Figure 4.4.1.2  
Wetland Impacts  
Proposed Project  
U.S. Steel Keetac  
Keewatin, MN

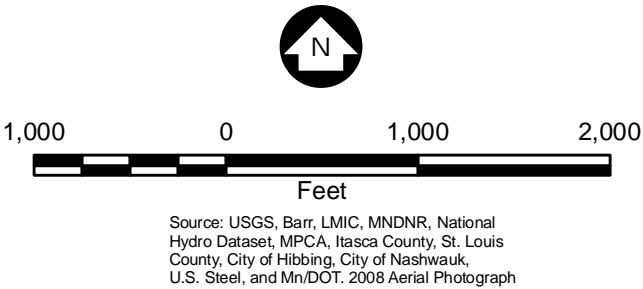






M:\4. L147204\Map\GIS Maps\GIS Chapter 4 Affected Env and Env Consequences\Wetland Impacts-Plant Area.mxd

- Legend**
- Current and Proposed Keetac Footprint
  - Plant Area
  - Direct Wetland Impact
  - Indirect Wetland Impact
  - County Boundary
  - City Boundary
  - Keewatin Urban Development
  - Railroad
  - Streams

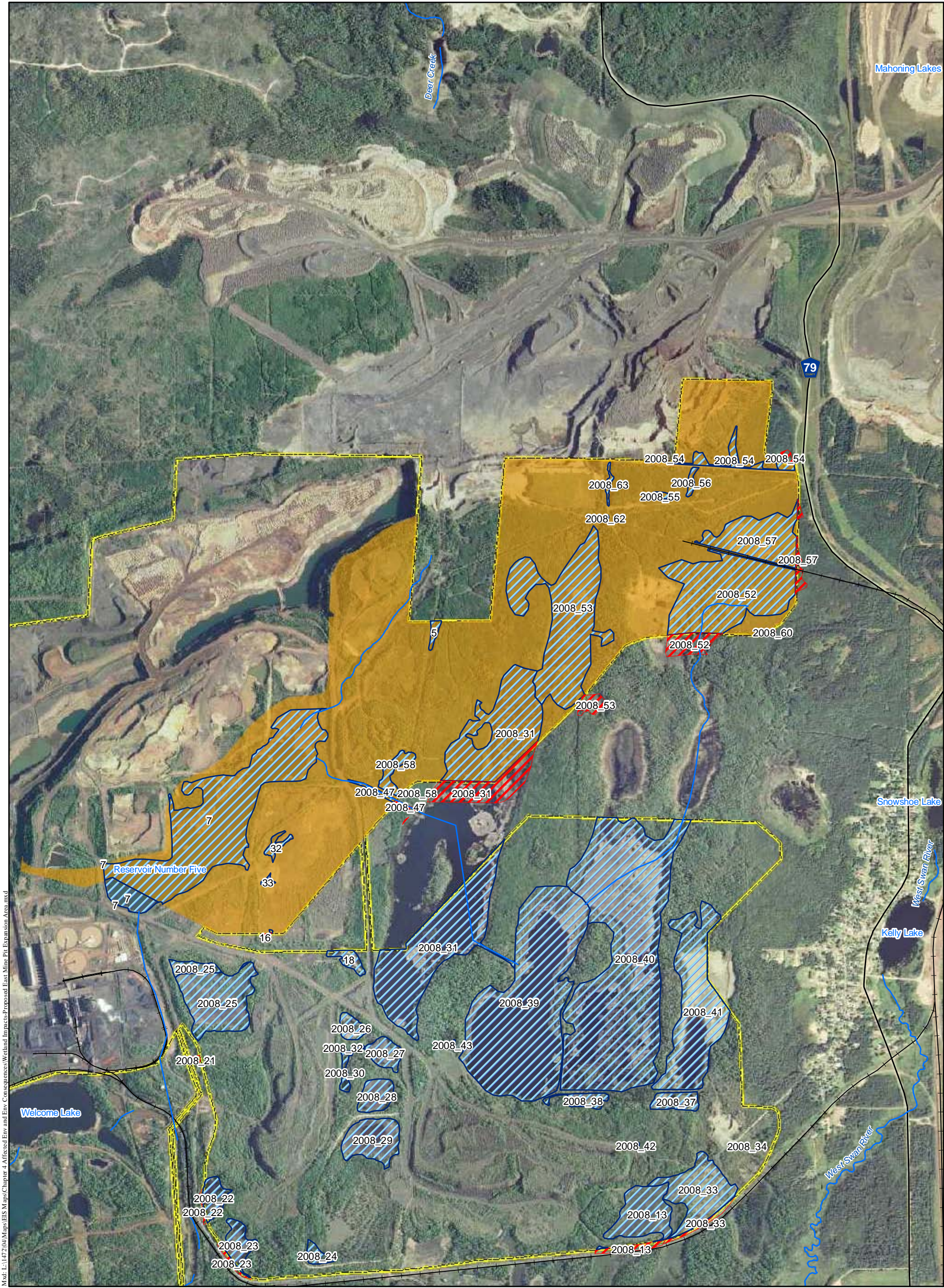


Source: USGS, Barr, LMIC, MNDNR, National Hydro Dataset, MPCA, Itasca County, St. Louis County, City of Hibbing, City of Nashwauk, U.S. Steel, and Mn/DOT. 2008 Aerial Photograph

Figure 4.4.1.3  
Wetland Impacts  
Plant Area  
U.S. Steel Keetac  
Keewatin, MN







Map: L:\1472\04\Maps\EIS Maps\Chapter 4 Affected Env and Env Consequences\Wetland Impacts\Proposed East Mine Pit Expansion Area.mxd

Legend

- Current and Proposed Keetac Footprint
- Direct Wetland Impact
- Indirect Wetland Impact
- Proposed East Mine Pit Expansion
- Streams
- Railroad

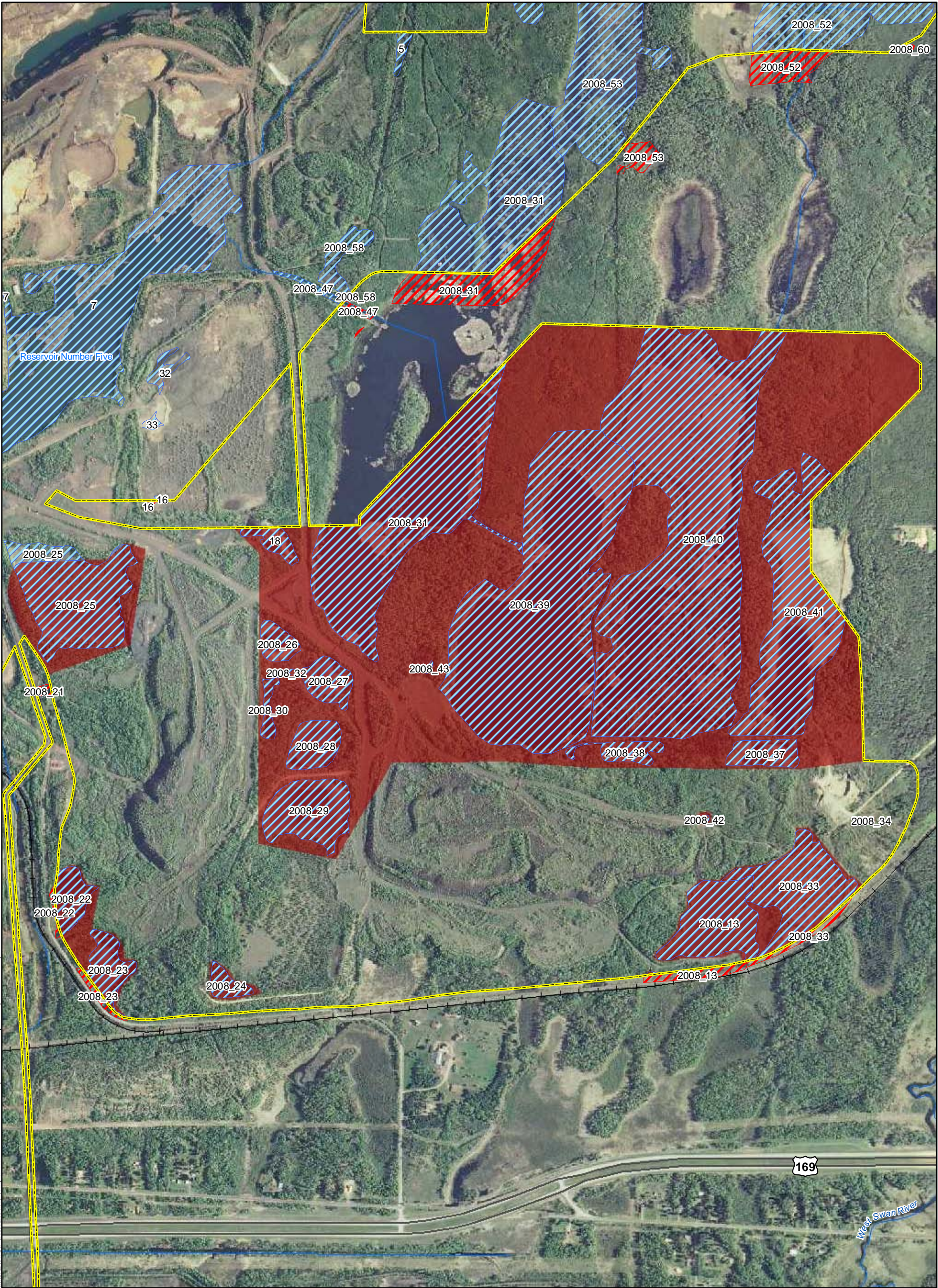


Source: USGS, Barr, LMIC, MNDNR, National Hydro Dataset, MPCA, Itasca County, St. Louis County, City of Hibbing, City of Nashauk, U.S. Steel, and Mn/DOT. 2008 Aerial Photograph

Figure 4.4.1.4  
Wetland Impacts  
Proposed East Mine Pit Expansion  
U.S. Steel Keetac  
Keewatin, MN







Current and Proposed Keetac Footprint

Direct Wetland Impact

Indirect Wetland Impact

Proposed East Stockpile

Keewatin Urban Development

Railroad

Streams

N

1,000

0

1,000

2,000

Feet

Source: USGS, Barr, LMIC, MNDNR, National Hydro Dataset, MPCA, Itasca County, St. Louis County, City of Hibbing, City of Nashwauk, U.S. Steel, and Mn/DOT. 2008 Aerial Photograph

Figure 4.4.1.5

Wetland Impacts

Proposed East Stockpile

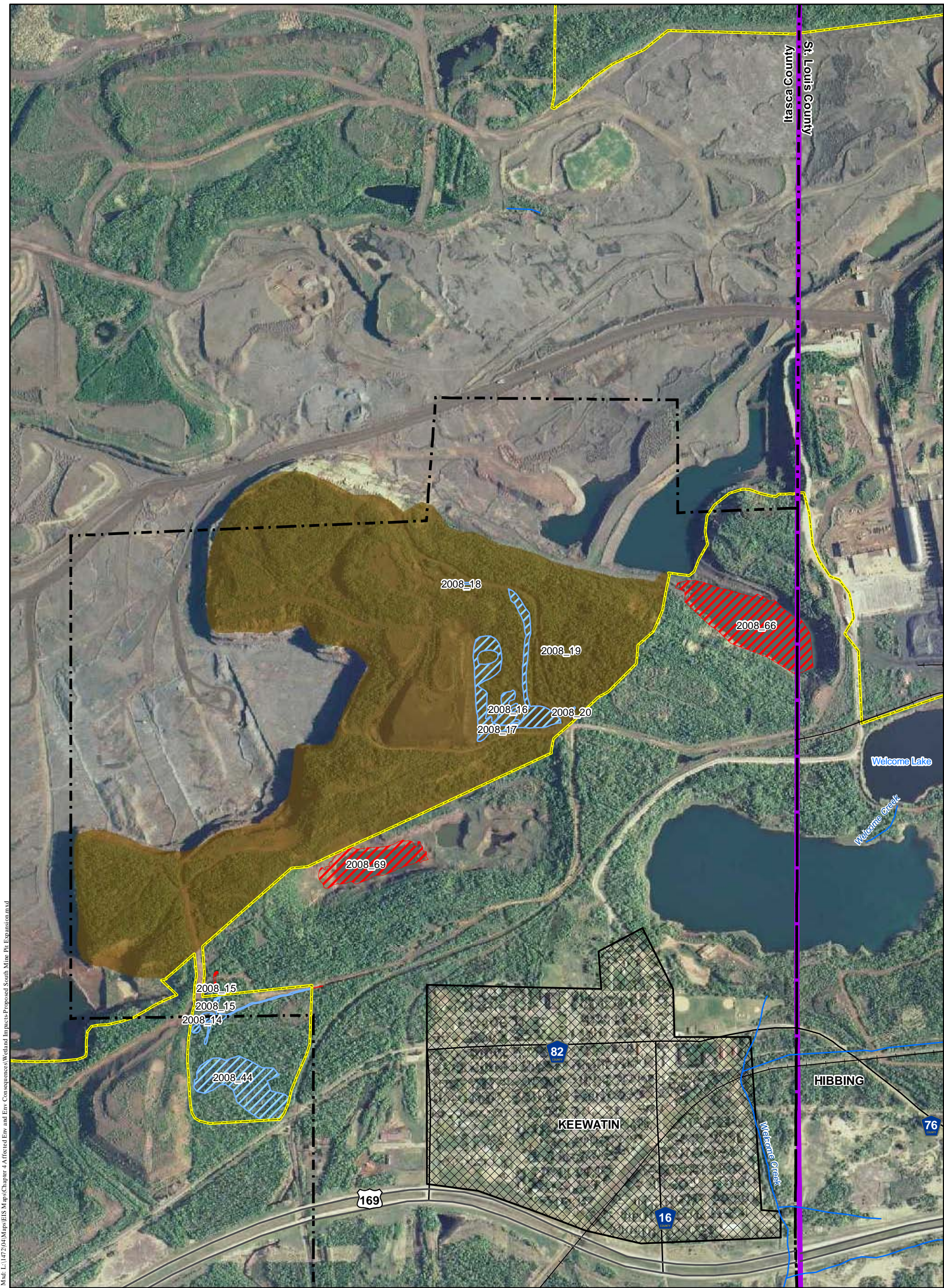
U.S. Steel Keetac

Keewatin, MN

Minnesota

DEPARTMENT OF NATURAL RESOURCES





M:\d1\147204\Maps\EIS Maps\Chapter 4 Affected Env. and Env. Consequences\Wetland Impacts\Proposed South Mine Pit Expansion.mxd

Legend

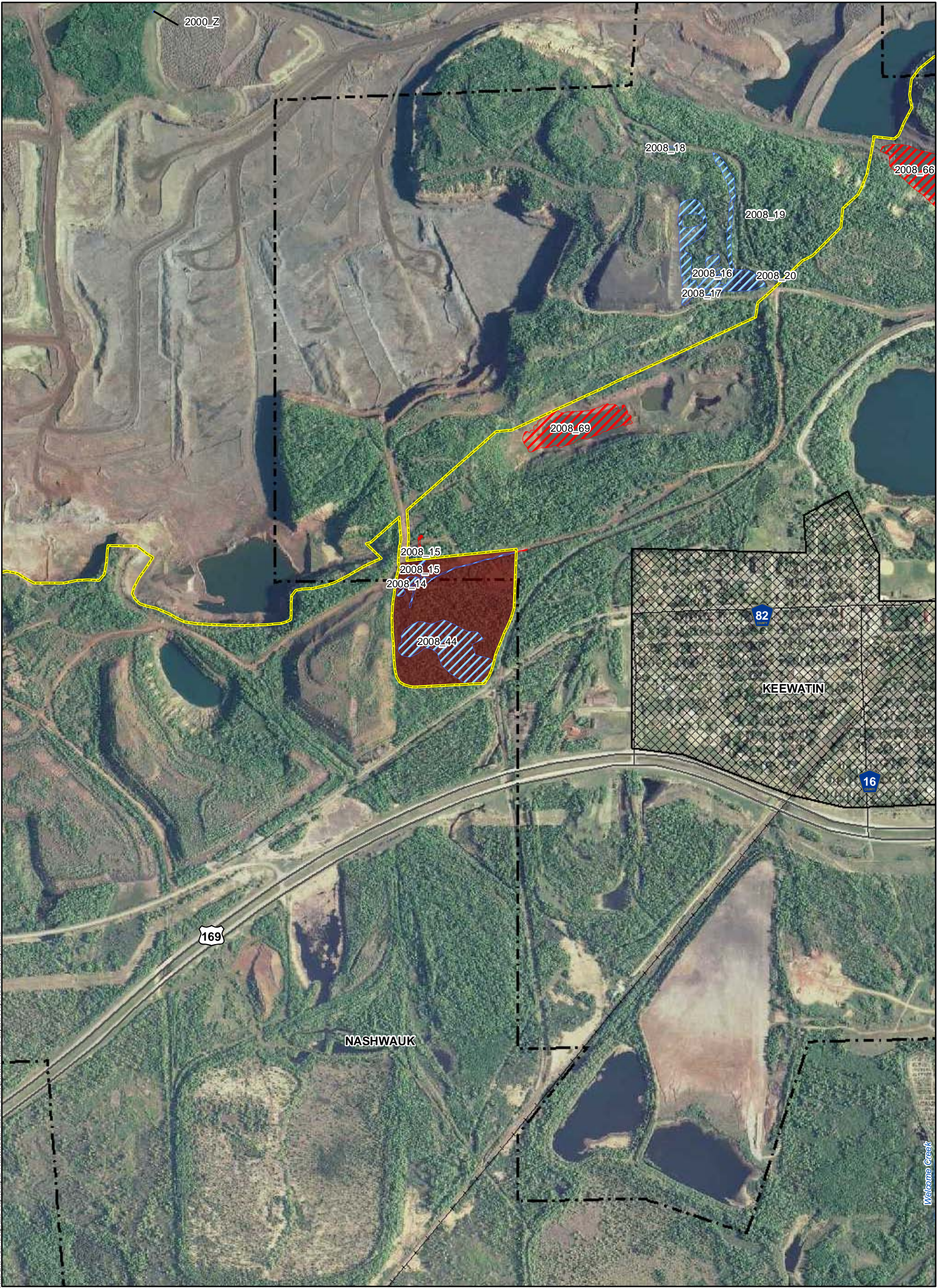
- Current and Proposed Keetac Footprint
- Direct Wetland Impact
- Indirect Wetland Impact
- Proposed South Mine Pit Expansion
- County Boundary
- City Boundary
- Keewatin Urban Development
- Railroad
- Streams

Source: USGS, Barr, LMIC, MNDNR, National Hydro Dataset, MPCA, Itasca County, St. Louis County, City of Hibbing, City of Nashauk, U.S. Steel, and Mn/DOT. 2008 Aerial Photograph

Figure 4.4.1.6  
Wetland Impacts  
Proposed South Mine Pit Expansion  
U.S. Steel Keetac  
Keewatin, MN





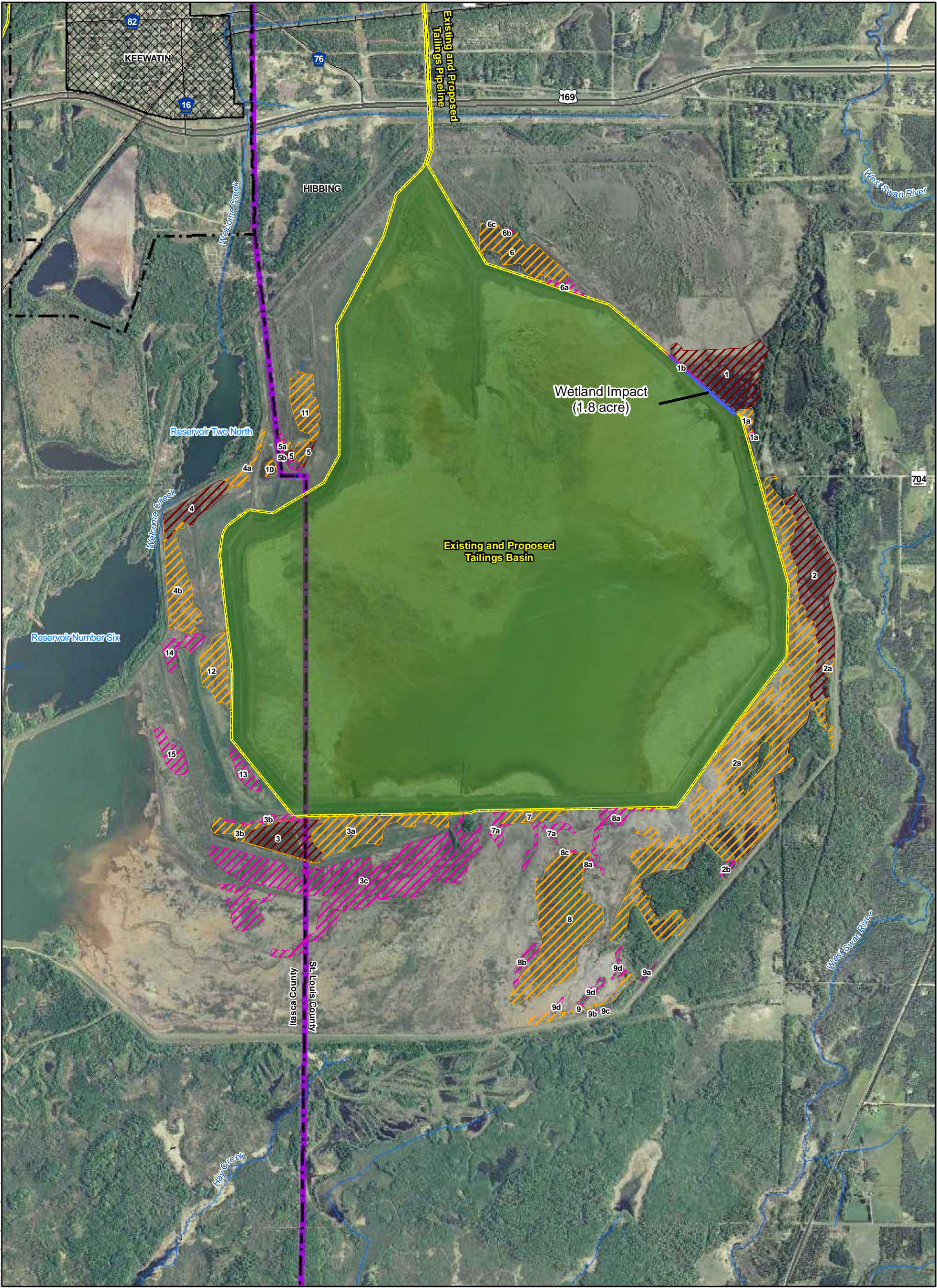


- Legend**
- Current and Proposed Keetac Footprint
  - Direct Wetland Impact
  - Indirect Wetland Impact
  - Proposed South Stockpile
  - City Boundary
  - Keewatin Urban Development
  - Railroad
  - Streams

Figure 4.4.1.7  
Wetland Impacts  
Proposed South Stockpile  
U.S. Steel Keetac  
Keewatin, MN

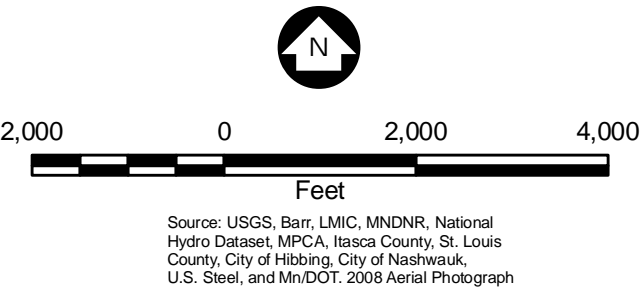






M:\cd L\1472\04\Maps\EIS Maps\Chapter 4 Affected Env and Env Consequences\Wetland Impacts-Tailings Basin.mxd

- Legend**
- Current and Proposed Keetac Footprint
  - Direct Wetland Impact
  - Year 2000 Wetlands
  - Year 2005 Wetlands
  - Year 2008 Wetlands
  - Tailings Basin
  - County Boundary
  - City Boundary
  - Keewatin Urban Development
  - Railroad
  - Streams



Source: USGS, Barr, LMIC, MNDNR, National Hydro Dataset, MPCA, Itasca County, St. Louis County, City of Hibbing, City of Nashauk, U.S. Steel, and Mn/DOT. 2008 Aerial Photograph

Figure 4.4.1.8  
Tailings Basin Wetlands  
U.S. Steel Keetac  
Keewatin, MN

