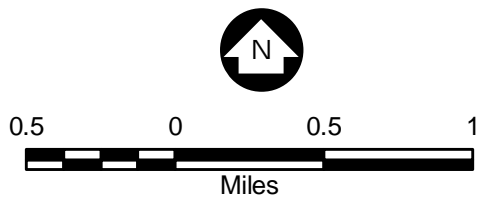


Mxd: L:\1472\04\Maps\EIS\Maps\Chapter 4 Affected Env and Env Consequences\Threatened and Endangered Species.mxd

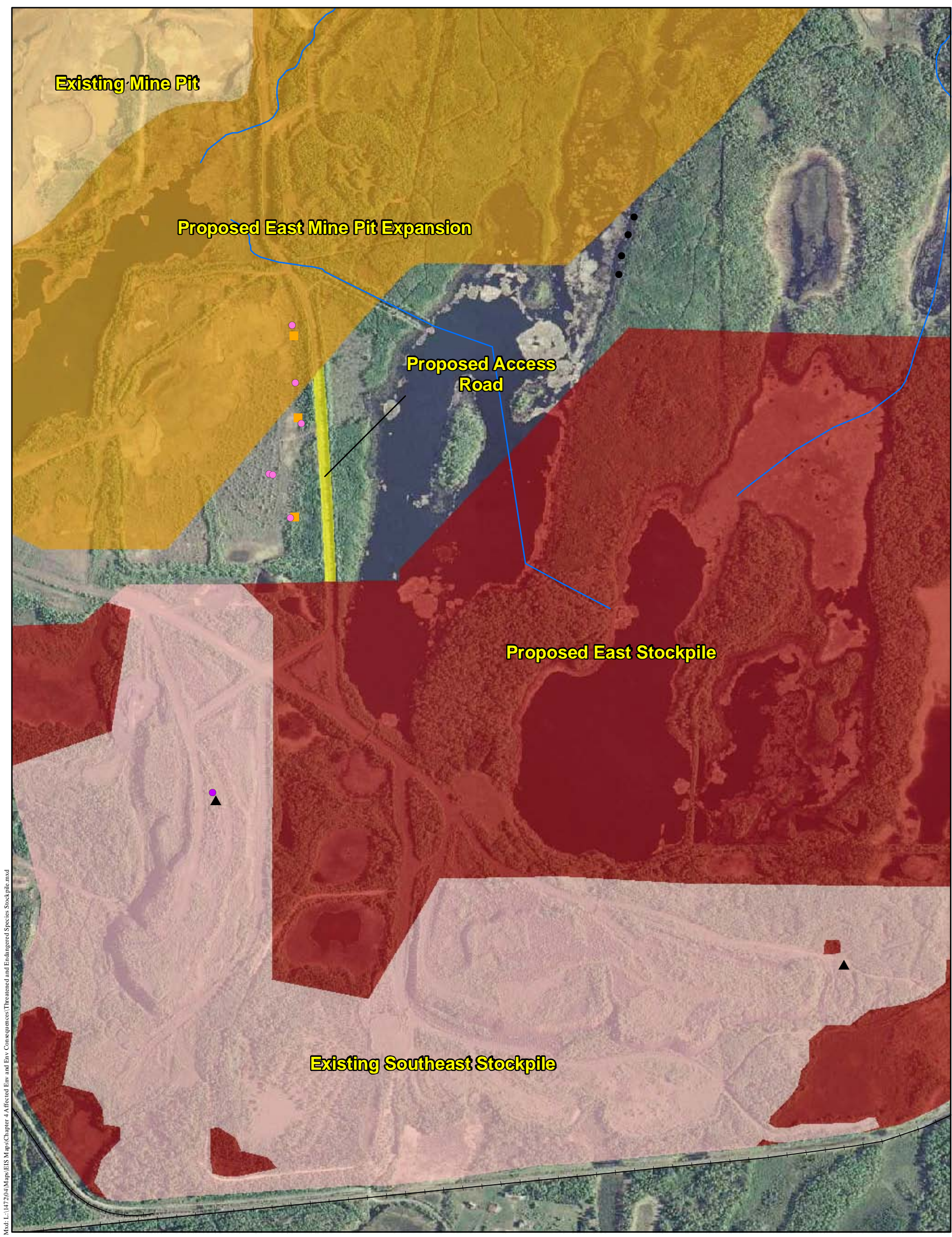
- Legend**
- Project Areas**
- Existing Southeast Stockpile
 - Existing Northwest Stockpile
 - Proposed East Stockpile
 - Proposed South Stockpile
 - Proposed Stockpile Roads
 - Existing Mine Pit
 - Proposed East Mine Pit Expansion
 - Proposed South Mine Pit Expansion
 - Plant Area
 - Tailings Basin
 - Tailings Pipeline
 - County Boundary
 - City Boundary
- Rare Plant Survey**
- Botrychium ascendens
 - Botrychium pallidum
 - Botrychium rugulosum
 - Botrychium spp.
 - Sparganium glomeratum
- NHIS Database**
- Threatened or Endangered Plant
 - Threatened or Endangered Animal
- Other Legend Items:**
- Keewatin Urban Development
 - Streams



Source: USGS, Barr, LMIC, MNDNR, National Hydro Dataset, MPCA, Itasca County, St. Louis County, City of Hibbing, City of Nashauk, U.S. Steel, and Mn/DOT. 2008 Aerial Photograph

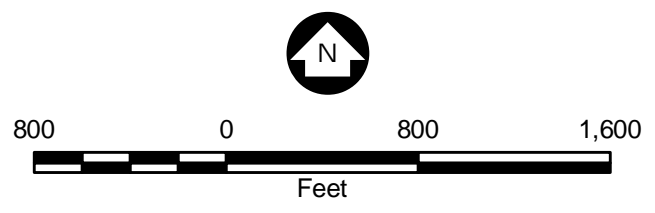
Figure 4.3.1
Threatened and
Endangered Species
U.S. Steel Keetac
Keewatin, MN





Mod: L:\147204\Maps\EIS Maps\Chapter 4A\Focused Env and Env Consequences\Threatened and Endangered Species Stockpile.mxd

- Legend**
- Project Areas**
- Existing Southeast Stockpile
 - Proposed East Stockpile
 - Proposed Stockpile Roads
 - Existing Mine Pit
 - Proposed East Mine Pit Expansion
 - Streams
- Rare Plant Survey**
- Botrychium ascendens
 - Botrychium pallidum
 - Botrychium rugulosum
 - Botrychium spp.
 - Sparganium glomeratum



Source: USGS, Barr, LMIC, MNDNR, National Hydro Dataset, MPCA, Itasca County, St. Louis County, City of Hibbing, City of Nashwauk, U.S. Steel, and Mn/DOT. 2008 Aerial Photograph

Figure 4.3.2
Threatened and Endangered Species Near the Proposed East Stockpile U.S. Steel Keetac Keewatin, MN

