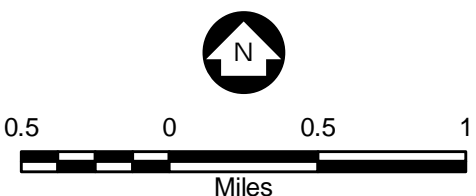


- Legend**
- No Action Alternative Boundaries**
- Existing Northwest Stockpile
 - Existing Southeast Stockpile
 - Existing Mine Pit
 - Existing Plant Area
 - Existing Tailings Basin
 - Existing Tailings Pipeline
 - County Boundary
 - City Boundary
 - Keewatin Urban Development
 - Streams
 - Railroad

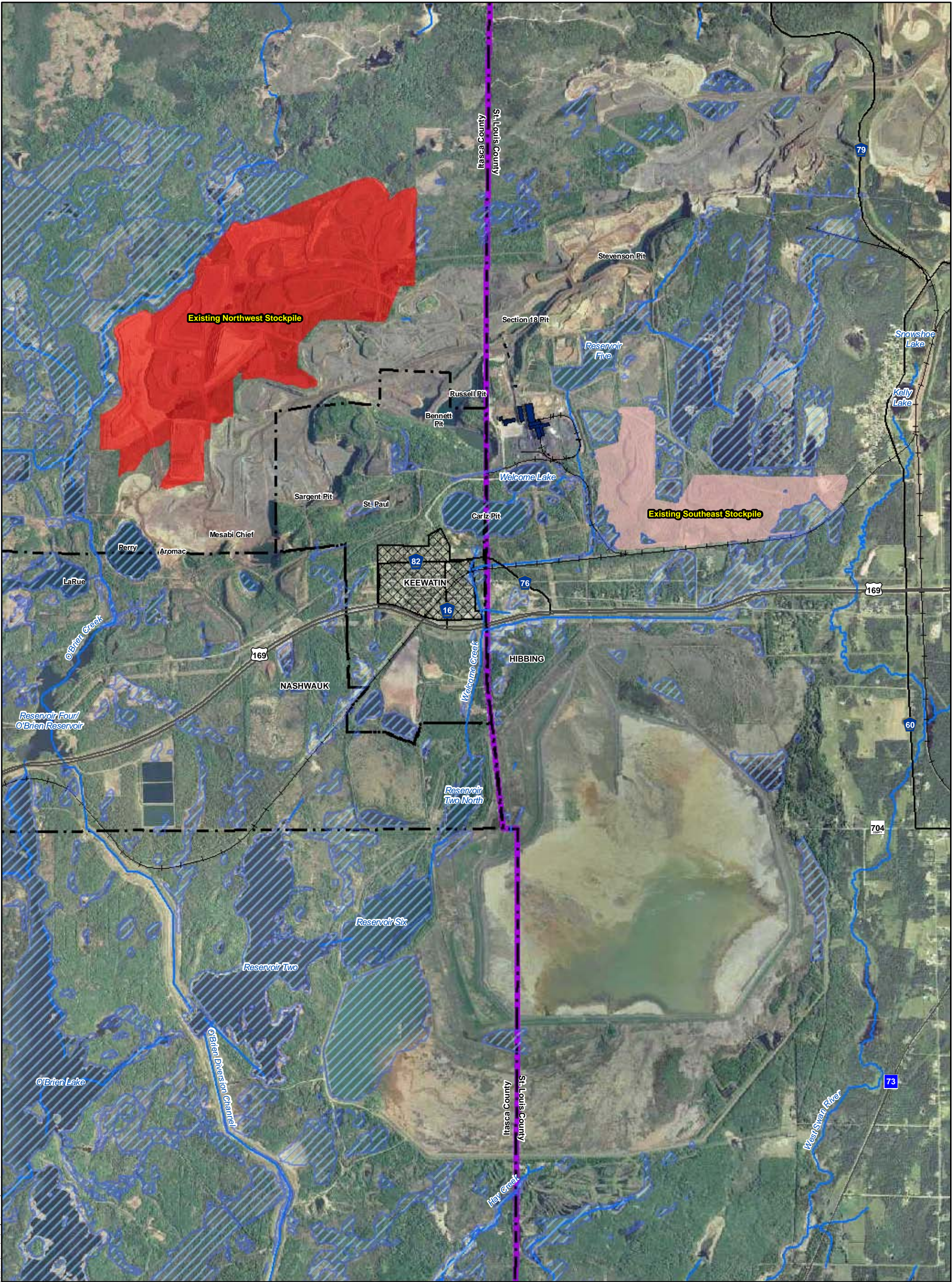


Source: USGS, Barr, LMIC, MNDNR, National Hydro Dataset, MPCA, Itasca County, St. Louis County, City of Hibbing, City of Nashauk, U.S. Steel, and Mn/DOT. 2008 Aerial Photograph

Figure 3.2.1
No Action
Alternative Boundary
U.S. Steel Keetac
Keewatin, MN



Mxd: L:\1472\04\Maps\EIS Maps\Chapter 3\No Action Alternative Boundary.mxd

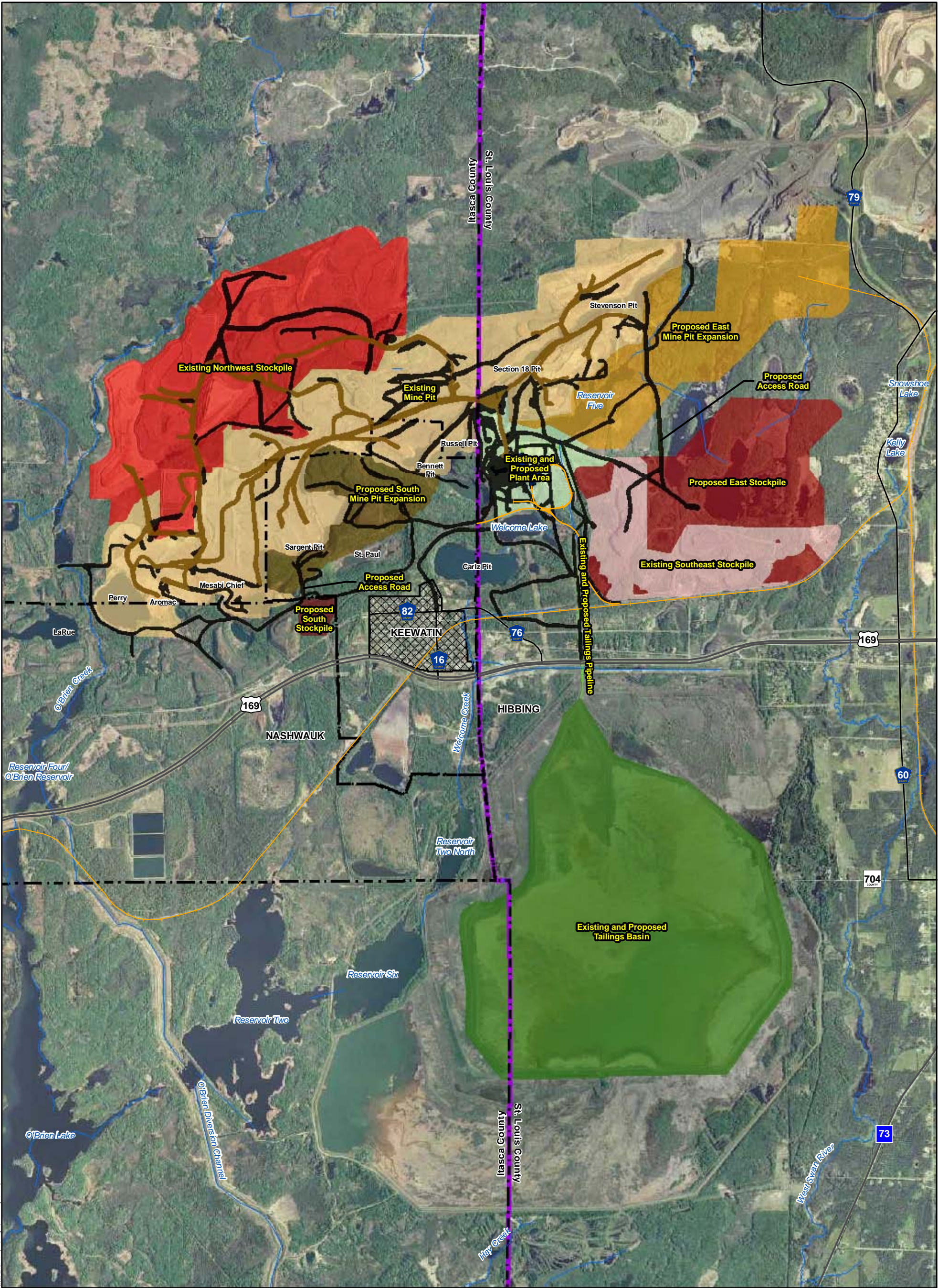


- Legend**
- Project Areas**
- Existing Southeast Stockpile
 - Existing Northwest Stockpile
 - Existing Wetlands
 - City Boundary
 - Keewatin Urban Development
 - County Boundary
 - Streams
 - Railroad

Figure 3.2.2
Existing Utilized Stockpiles
U.S. Steel Keetac
Keewatin, MN

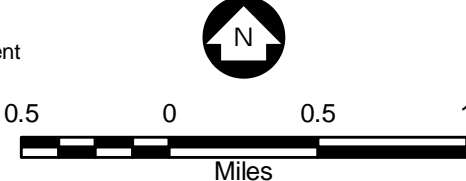


Source: USGS, Barr, LMIC, MNDNR, National Hydro Dataset, MPCA, Itasca County, St. Louis County, City of Hibbing, City of Nashwauk, U.S. Steel, and Mn/DOT. 2008 Aerial Photograph



- Legend**
- Project Areas**
- Existing Southeast Stockpile
 - Existing Northwest Stockpile
 - Proposed East Stockpile
 - Proposed South Stockpile
 - Proposed Stockpile Roads
 - Existing Mine Pit
 - Proposed East Mine Pit Expansion
 - Proposed South Mine Pit Expansion
 - Plant Area
 - Tailings Basin
 - Tailings Pipeline

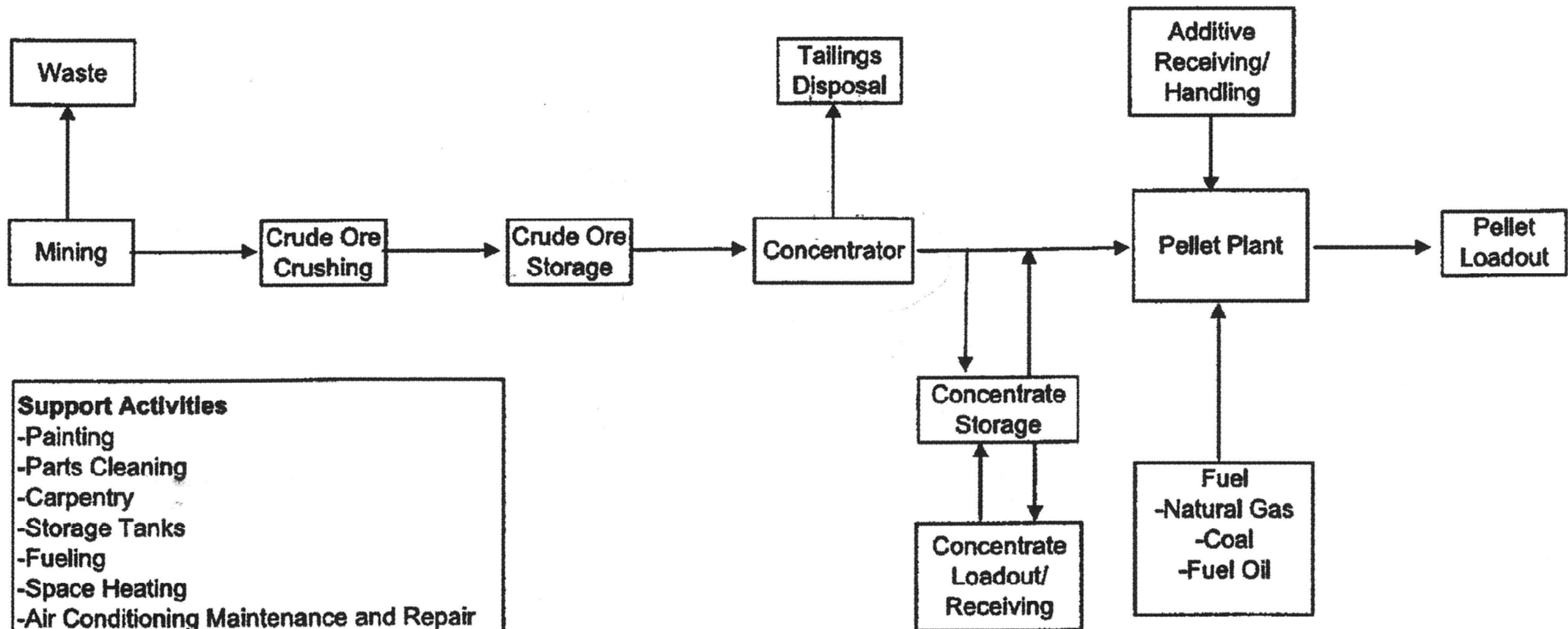
- City Boundary
- County Boundary
- Keewatin Urban Development
- Access Roads
- Haul Roads
- Buildings
- Streams
- Railroad



Source: USGS, Barr, LMIC, MNDNR, National Hydro Dataset, MPCA, Itasca County, St. Louis County, City of Hibbing, City of Nashauk, U.S. Steel, and Mn/DOT. 2008 Aerial Photograph

Figure 3.2.3
Existing Haul Roads,
Access Roads and Plant
U.S. Steel Keetac
Keewatin, MN





Support Activities

- Painting
- Parts Cleaning
- Carpentry
- Storage Tanks
- Fueling
- Space Heating
- Air Conditioning Maintenance and Repair
- Conveyor Belt Repair
- Sewage Treatment
- Dynamometer
- Emergency Generator
- Boilers
- Equipment Maintenance
- Laboratory
- Refractory
- Road Maintenance

Contracted Operations

- Explosives Loading
- Ballast Crushing
- Sewage Treatment
- Conveyor Belt Repair

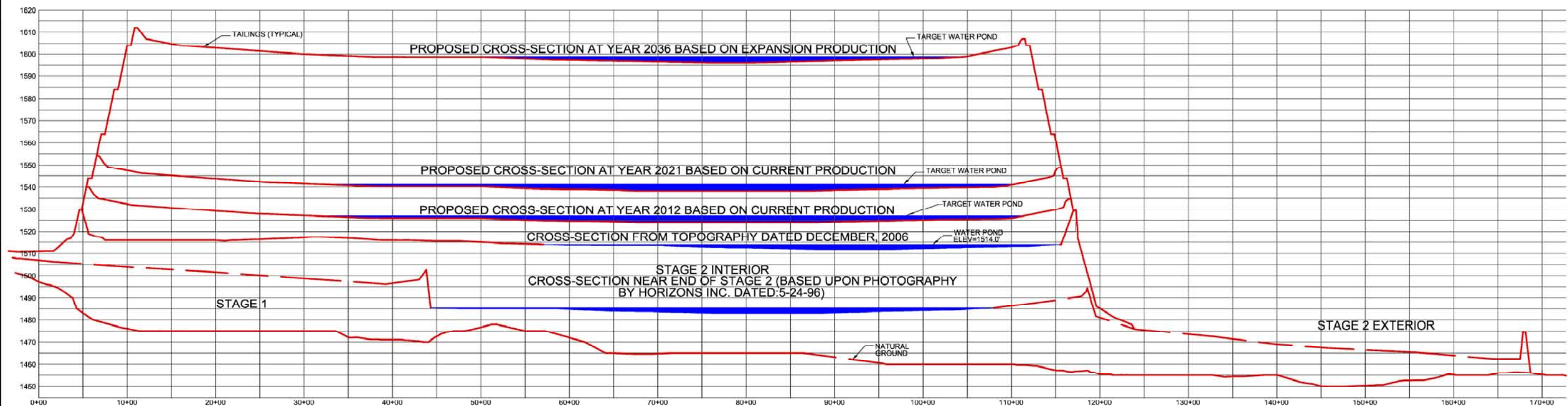
KEETAC OVERALL PROCESS FLOW DIAGRAM

Figure 3.2.4
Process Flow Diagram
U.S. Steel Keetac
Keewatin, MN



TAILINGS BASIN CROSS SECTIONS
2012 THROUGH 2036

UNITED STATES STEEL CORPORATION
TAILINGS BASIN PERMITTING FOR KEETAC
EXPANSION PROJECT
LONG RANGE PLANNING



NOTE: VERTICAL SCALE IS
EXAGGERATED 25 TIMES
LARGER THAN HORIZONTAL
SCALE.

NOTE:
FUTURE CROSS-SECTIONAL INFORMATION IS CONCEPTUAL AND MAY CHANGE
BASED ON ACTUAL TAILINGS PRODUCTION. THESE CROSS-SECTIONS ARE
PRELIMINARY OPINIONS OF PROBABLE CONSTRUCTION.

Figure 3.2.5
Tailings Basin
Cross Section
U.S. Steel Keetac
Keewatin, MN

