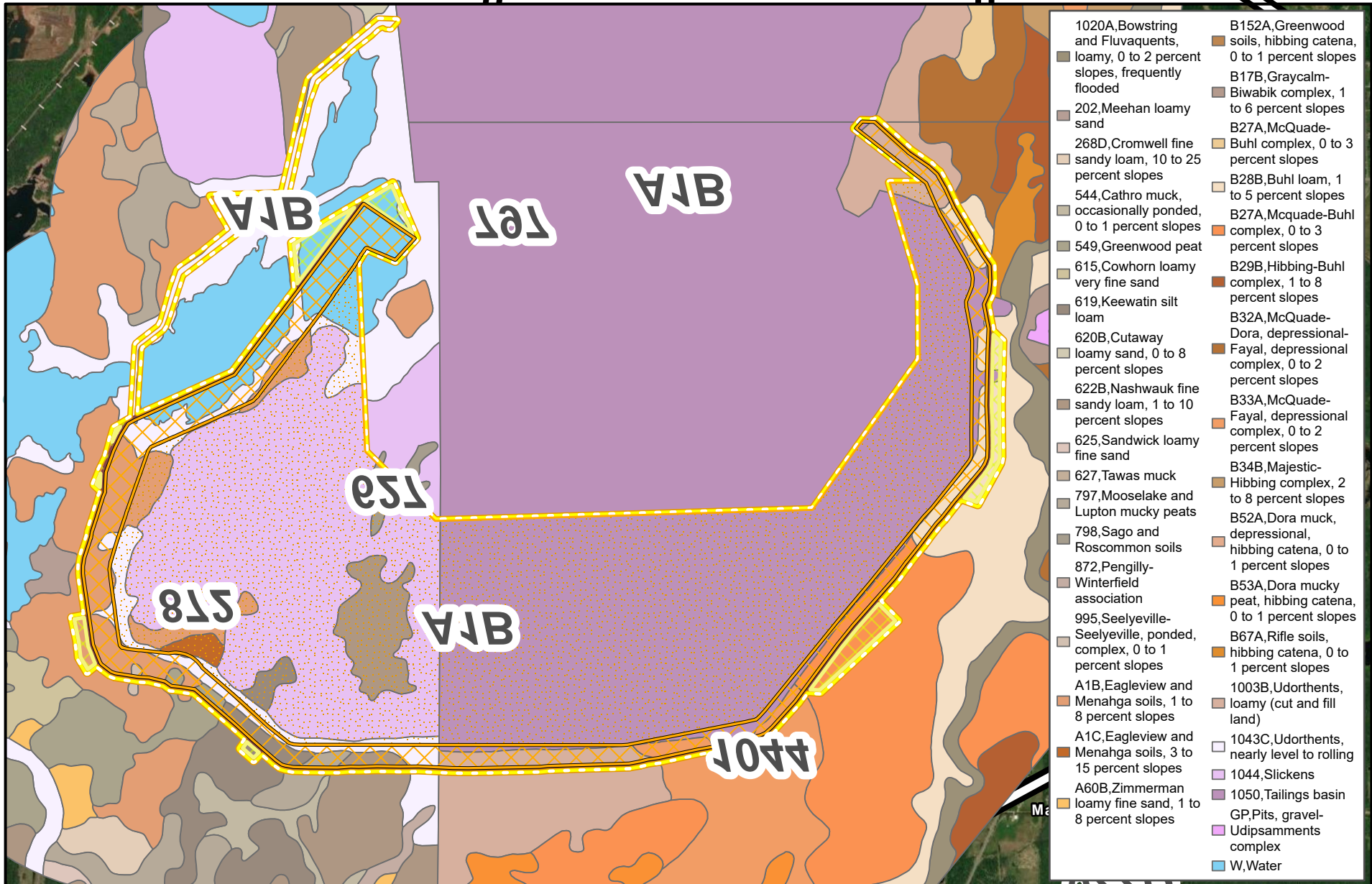


**U.S. Steel Keetac Tailings Storage Facility Project EAW**

**Figures 11.1 through 11.2**

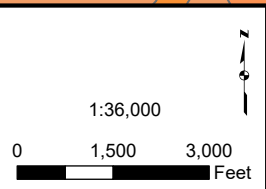
**U.S. Steel Keetac Tailings Storage Facility Project EAW**

**Figure 11.1**



- 1020A, Bowstring and Fluvaquents, loamy, 0 to 2 percent slopes, frequently flooded
- 202, Meehan loamy sand
- 268D, Cromwell fine sandy loam, 10 to 25 percent slopes
- 544, Cathro muck, occasionally ponded, 0 to 1 percent slopes
- 549, Greenwood peat
- 615, Cowhorn loamy very fine sand
- 619, Keewatin silt loam
- 620B, Cutaway loamy sand, 0 to 8 percent slopes
- 622B, Nashauk fine sandy loam, 1 to 10 percent slopes
- 625, Sandwick loamy fine sand
- 627, Tawas muck
- 797, Mooselake and Lupton mucky peats
- 798, Sago and Roscommon soils
- 872, Pengilly-Winterfield association
- 995, Seelyeville-Seelyeville, ponded, complex, 0 to 1 percent slopes
- A1B, Eagleview and Menahga soils, 1 to 8 percent slopes
- A1C, Eagleview and Menahga soils, 3 to 15 percent slopes
- A60B, Zimmerman loamy fine sand, 1 to 8 percent slopes
- B152A, Greenwood soils, hibbing catena, 0 to 1 percent slopes
- B17B, Graycalm-Biwabik complex, 1 to 6 percent slopes
- B27A, McQuade-Buhl complex, 0 to 3 percent slopes
- B28B, Buhl loam, 1 to 5 percent slopes
- B27A, McQuade-Buhl complex, 0 to 3 percent slopes
- B29B, Hibbing-Buhl complex, 1 to 8 percent slopes
- B32A, McQuade-Dora, depressional-Fayal, depressional complex, 0 to 2 percent slopes
- B33A, McQuade-Fayal, depressional complex, 0 to 2 percent slopes
- B34B, Majestic-Hibbing complex, 2 to 8 percent slopes
- B52A, Dora muck, depressional, hibbing catena, 0 to 1 percent slopes
- B53A, Dora mucky peat, hibbing catena, 0 to 1 percent slopes
- B67A, Rifle soils, hibbing catena, 0 to 1 percent slopes
- 1003B, Udorthents, loamy (cut and fill land)
- 1043C, Udorthents, nearly level to rolling
- 1044, Slickens
- 1050, Tailings basin
- GP, Pits, gravel-Udipsamments complex
- W, Water

- Permanent Impacts Area
- Temporary Impacts Area
- Tailings Deposition Area
- Permanent Maintenance Road
- Project Area

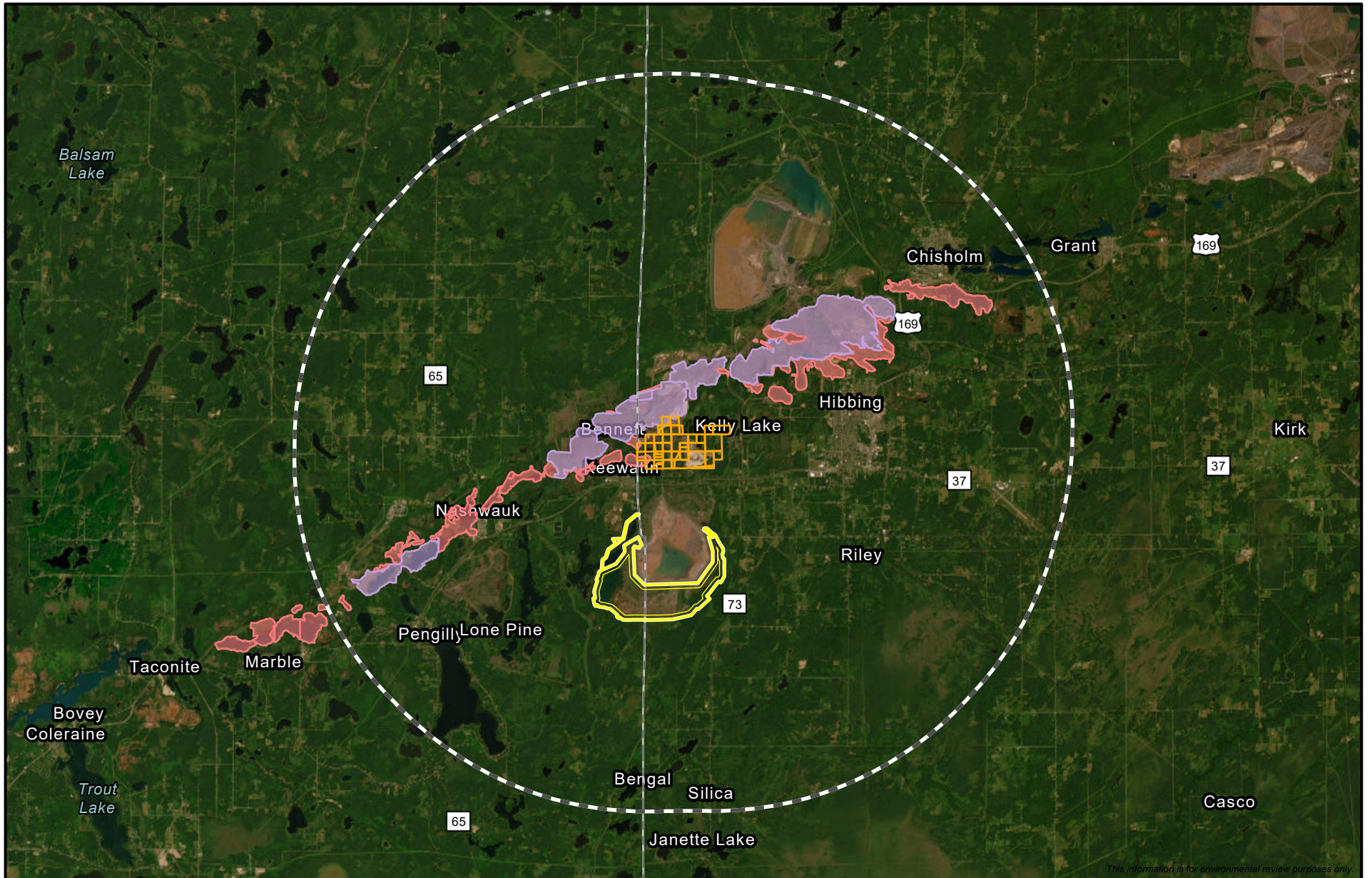


**SSurgo Soils Map**  
**Keetac TSF Project**  
 United States Steel  
 Keewatin, MN



**U.S. Steel Keetac Tailings Storage Facility Project EAW**

**Figure 11.2**



*This information is for environmental review purposes only.*



10 Mile USS Parcel Buffer	Project Area	Open Pit Mine: Natural Hematite Ores
County Boundary	Open Pit Mine: Magnetic Taconite Ores	
USS Parcels with Mining - St. Louis County		

1:253,440

0 2 4 Miles

**Mine Pits within 10 miles of the Keetac Process Facility**  
**Keetac TSF Project**  
 United States Steel  
 Keewatin, MN