

**U.S. Steel Keetac Tailings Storage Facility Project EAW**

**Figures 6.1 through 6.6**

**U.S. Steel Keetac Tailings Storage Facility Project EAW**

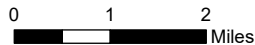
**Figure 6.1**



*This information is for environmental review purposes only.*

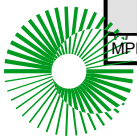
County Boundary

1:126,720



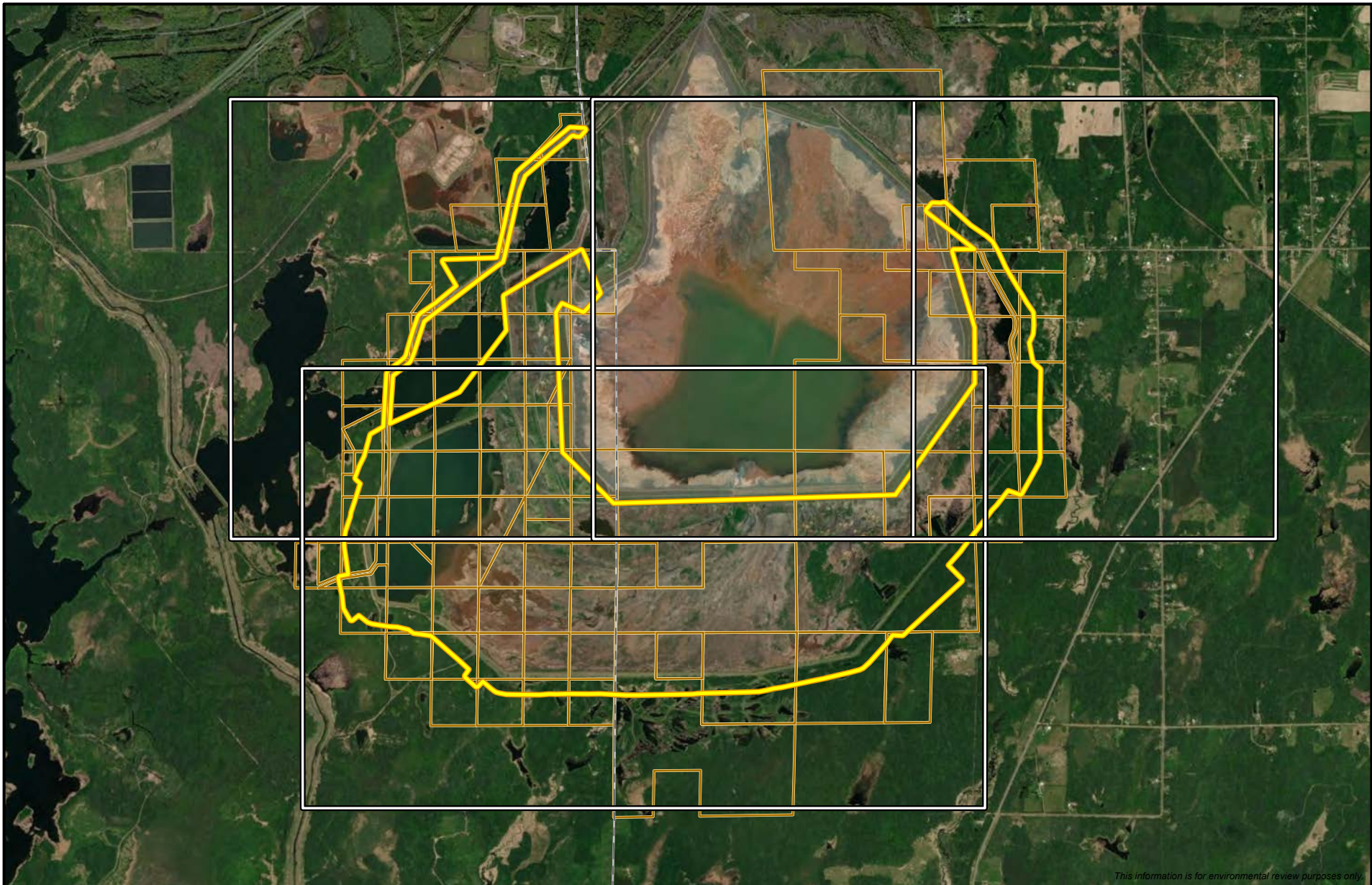
**Keetac Operations  
Keetac TSF Project**  
United States Steel  
Keewatin, MN

EBW






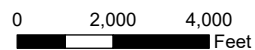
**U.S. Steel Keetac Tailings Storage Facility Project EAW**

**Figure 6.2**

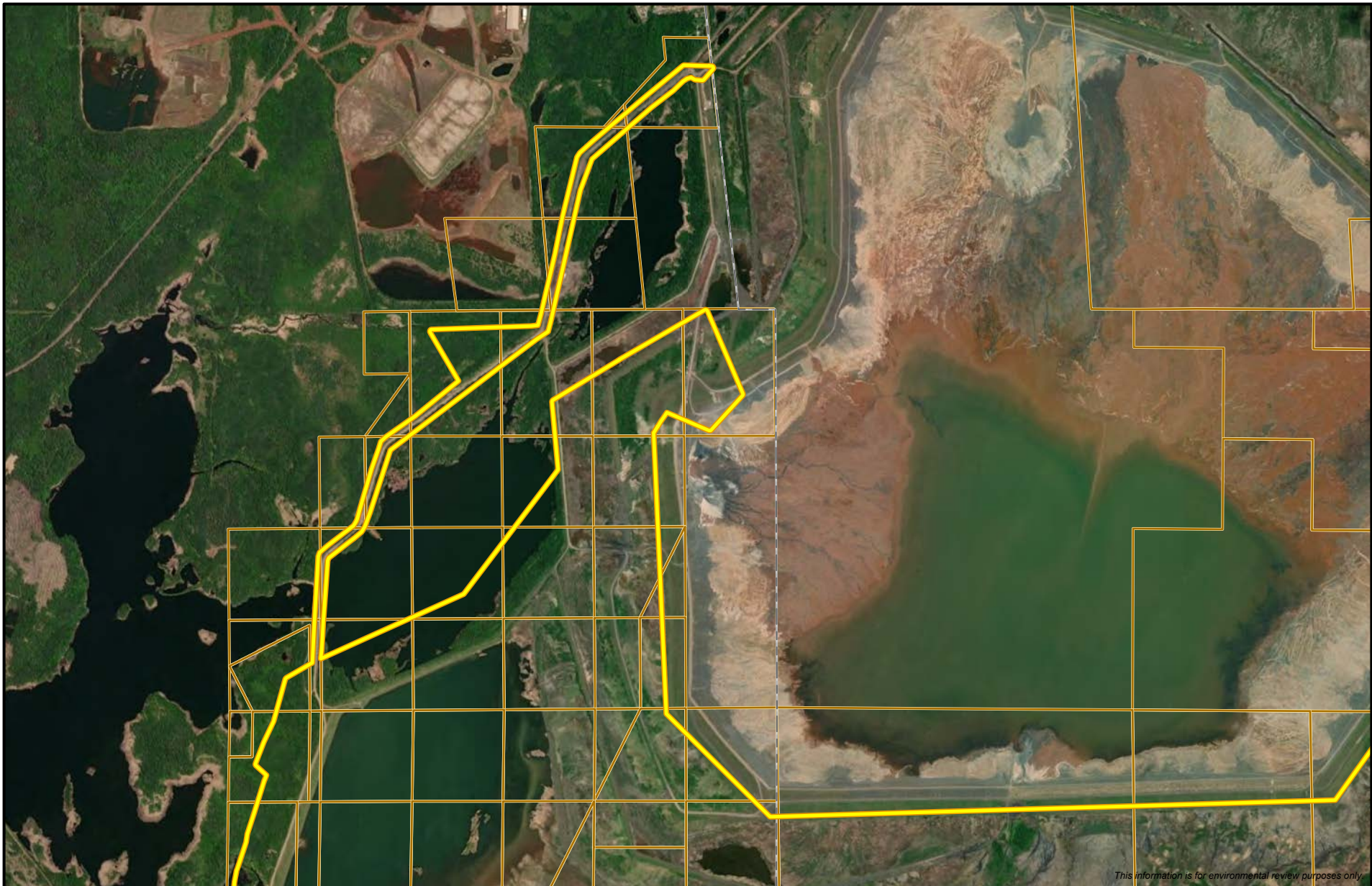


*This information is for environmental review purposes only.*




-  Project Area
-  US Steel Parcel within Project Area
-  County Boundary

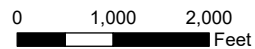


**US Steel Owned Parcels**  
**Keetac TSF Project**  
United States Steel  
St. Louis and Itasca Counties, MN

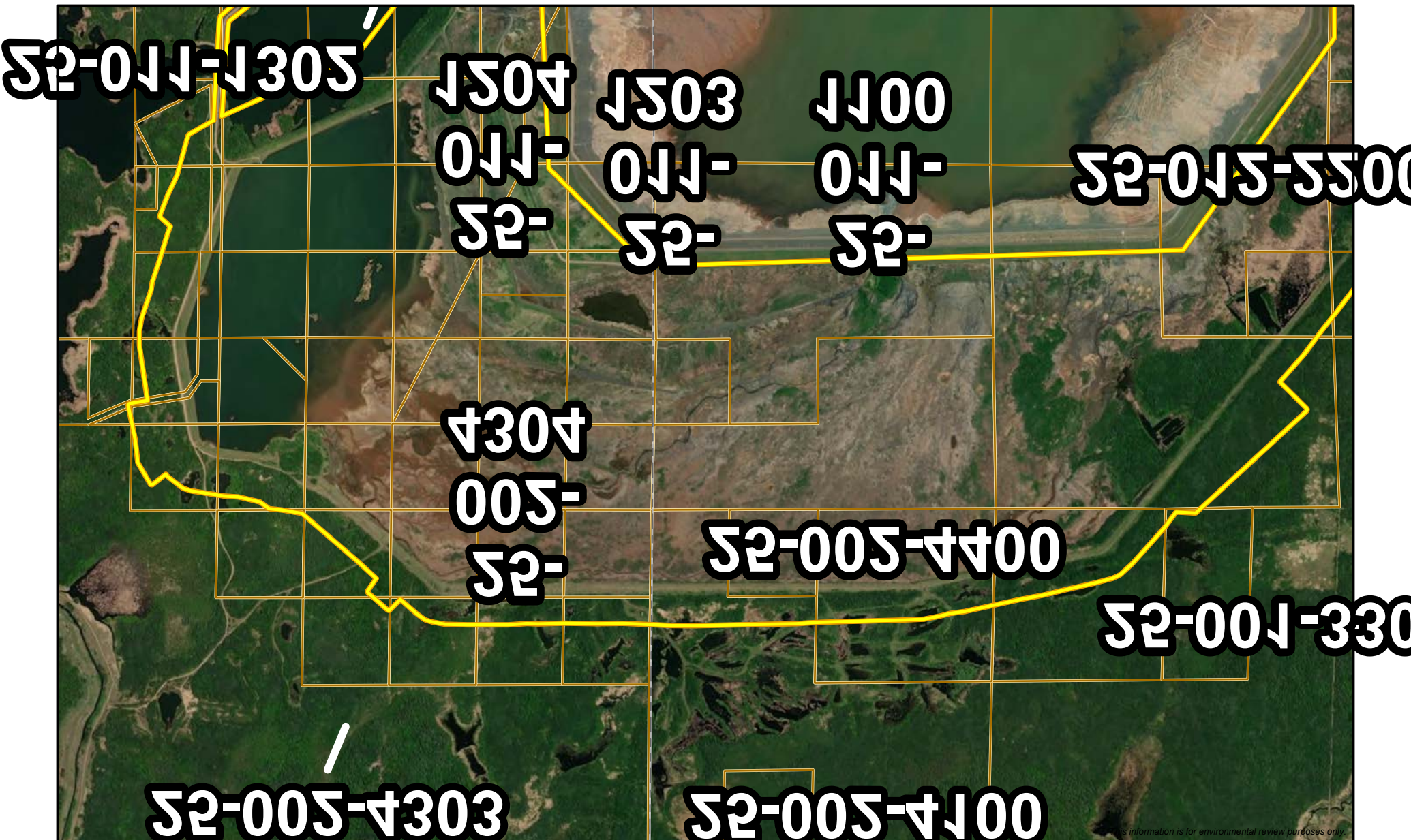





*This information is for environmental review purposes only*

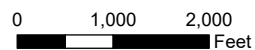
-  Project Area
-  US Steel Parcel within Project Area
-  County Boundary



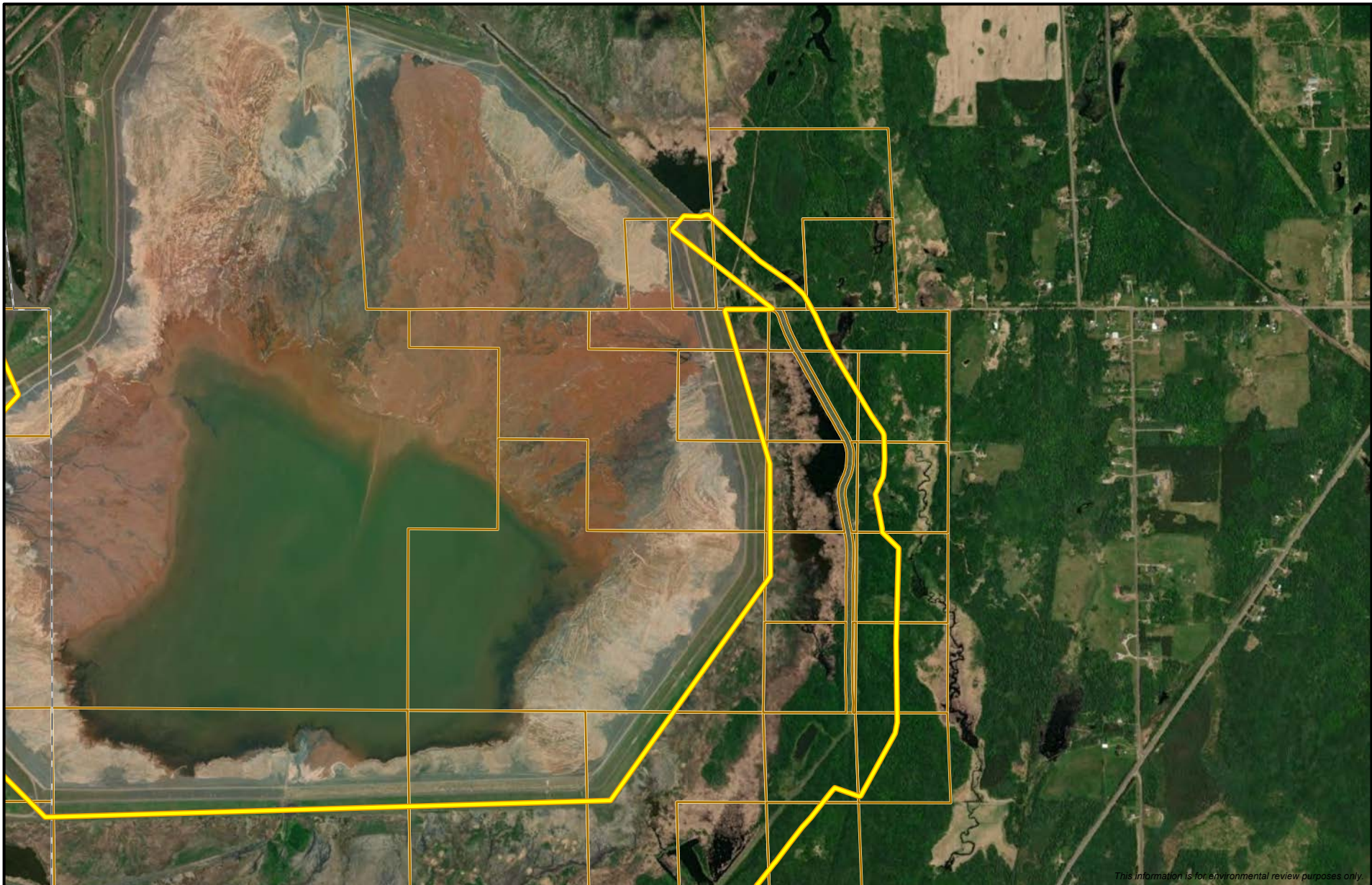
**US Steel Owned Parcels**  
**Keetac TSF Project**  
United States Steel  
St. Louis and Itasca Counties, MN






-  Project Area
-  US Steel Parcel within Project Area
-  County Boundary

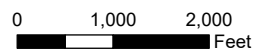


**US Steel Owned Parcels**  
 Keetac Project  
 United States Steel  
 St. Louis and Itasca Counties, MN



*This information is for environmental review purposes only.*

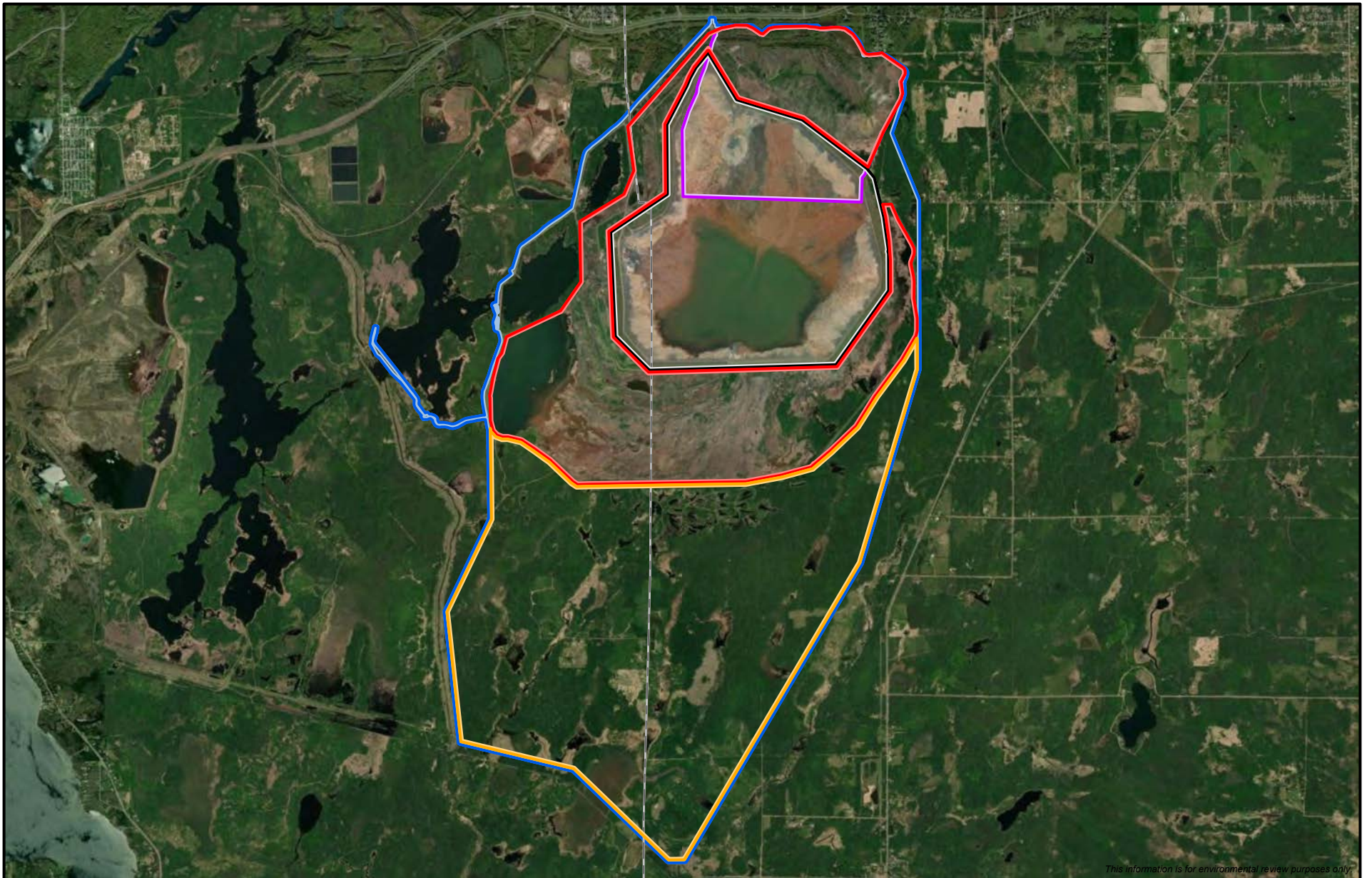
-  Project Area
-  US Steel Parcel within Project Area
-  County Boundary



**US Steel Owned Parcels**  
**Keetac TSF Project**  
United States Steel  
St. Louis and Itasca Counties, MN

**U.S. Steel Keetac Tailings Storage Facility Project EAW**

**Figure 6.3**

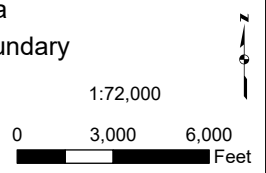


*This information is for environmental review purposes only.*



- Stage 1
- Stage 2 Interior
- Stage 2 Exterior
- Stage 3

- Mining Area
- County Boundary



**Keetac TSF Areas**  
**Keetac TSF Project**  
 United States Steel  
 Keewatin, MN

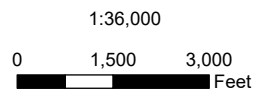
**U.S. Steel Keetac Tailings Storage Facility Project EAW**

**Figure 6.4**



*This information is for environmental review purposes only.*

- |  |  |
|--|--|
|  Permanent Impacts Area                                 |  Project Area             |
|  Temporary Impacts Area                                 |  Separation Facility Area |
|  Permanent Maintenance Road                             |  Mining Area              |
|  Tailings Deposition Area - On Top of Previous Tailings |  County Boundary          |



**Project Footprint and  
Permit to Mine Mining Area  
Keetac TSF Project**  
United States Steel  
Keewatin, MN

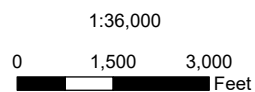
**U.S. Steel Keetac Tailings Storage Facility Project EAW**

**Figure 6.5**



*This information is for environmental review purposes only.*

- Permanent Impact - Dams
- Permanent Impact - Dikes
- Project Area
- County Boundary

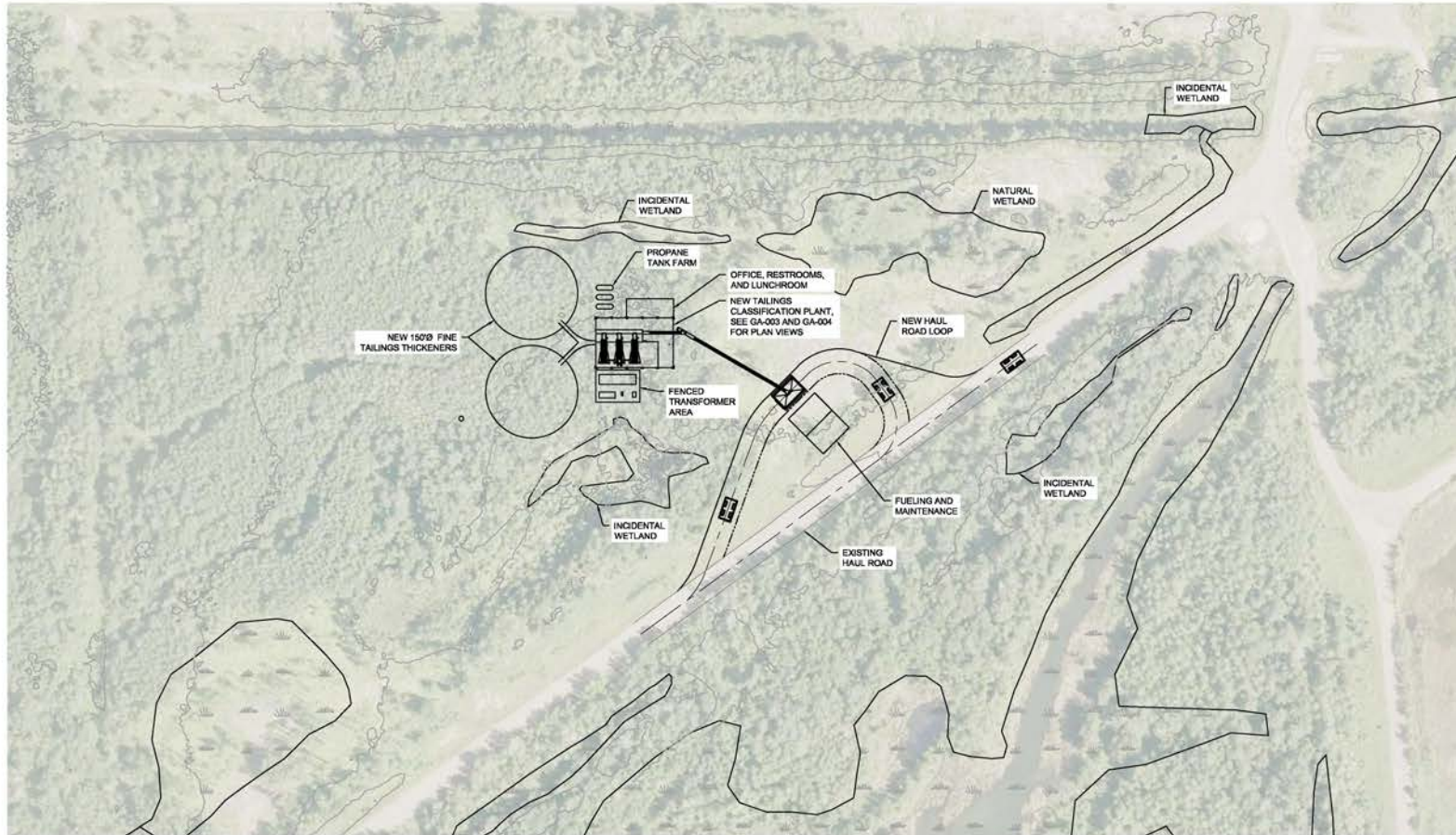


**Permanent Impacts Footprint**  
**Keetac TSF Project**  
 United States Steel  
 Keewatin, MN

**U.S. Steel Keetac Tailings Storage Facility Project EAW**

**Figure 6.6**

CAD: USER: HEPWALBERT FILE: C:\QUICKEN\QUICKEN\11687\BARR\487\11687\BARR\487\11687\GA-002.DWG PLOT SCALE: 1:1 PLOT DATE: 07/20/24 9:58 AM



PLAN: PLANT LAYOUT  
 1" = 1000'

PRELIMINARY DRAFT  
 NOT FOR CONSTRUCTION

				CLIENT BID CONSTRUCTION RECORD				Project Office: BARR ENGINEERING CO. 3128 14TH AVENUE EAST HIBBING, MN 55746 Corporate Headquarters: Hibbing, Minnesota Ph: 1-800-255-1968 Fax: (218) 262-3490 www.barr.com				Scale: AS SHOWN Date: 06/05/2024 Drawn: EMC2 Checked: --- Designed: --- Approved: ---		U.S. STEEL KEEWATIN, MINNESOTA		TAILINGS CLASSIFICATION - KEETAC KEEWATIN, MINNESOTA GENERAL ARRANGEMENT DETAILED PLAN		BARR PROJECT No. 23311550.01 CLIENT PROJECT No. DWG. No. GA-002 REV. No. A	
NO.	BY	CHK	APP	DATE	REVISION DESCRIPTION	RELEASED TO/FOR	A	B	C	0	1	2	3	DATE RELEASED					