

2019 Interstate Island EAW
FIGURES

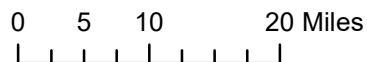
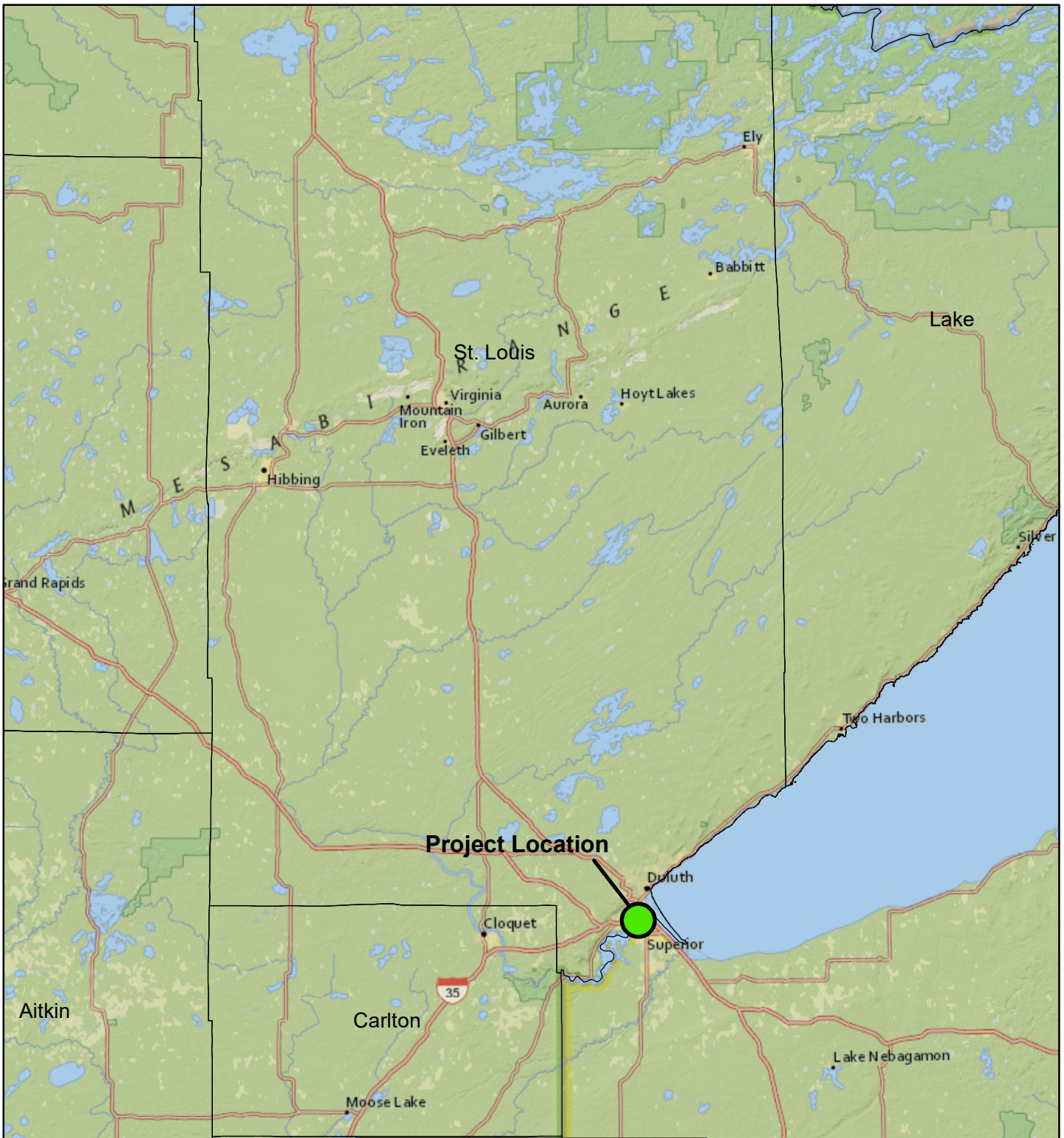
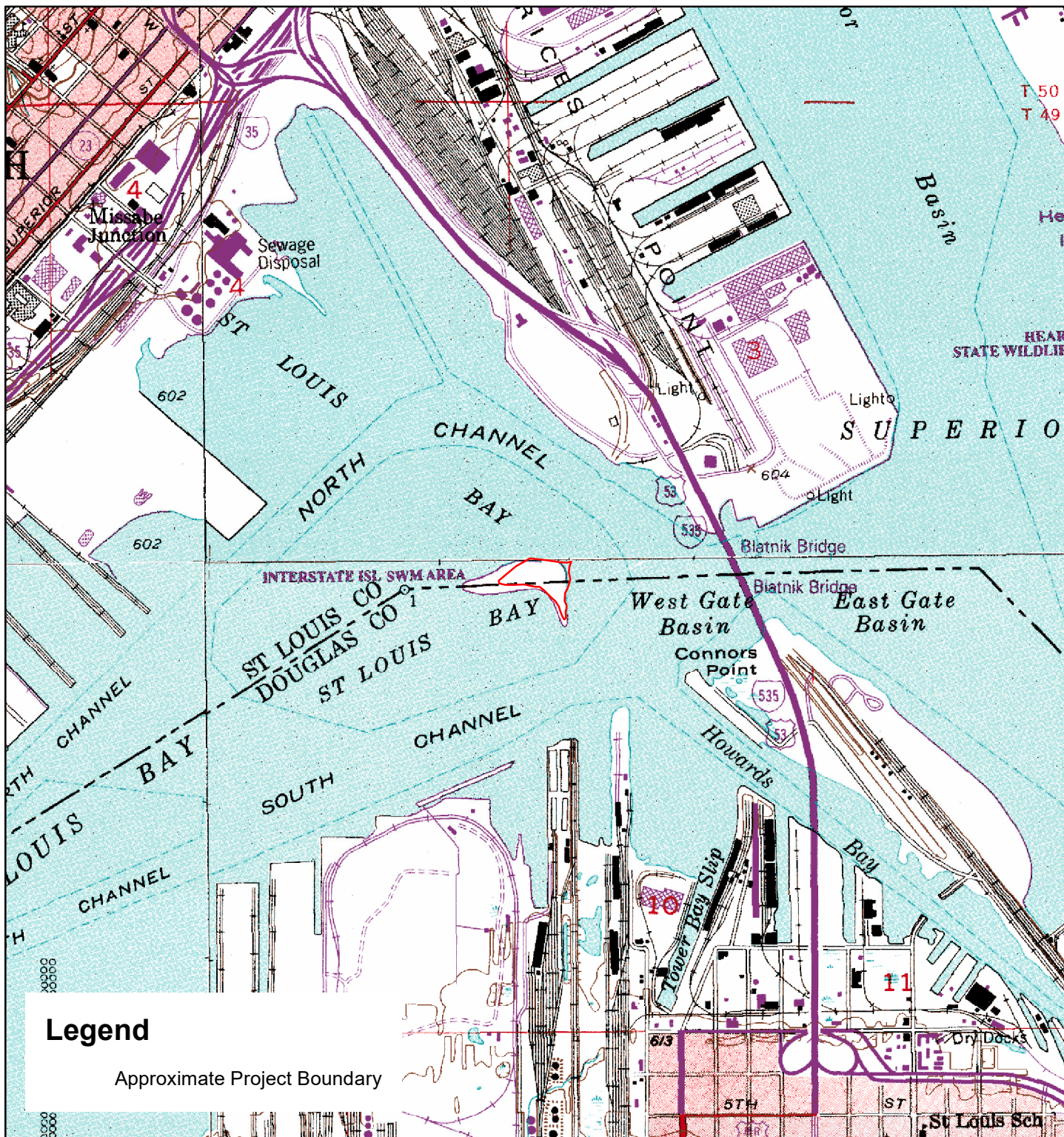


Figure 1. General Project Location



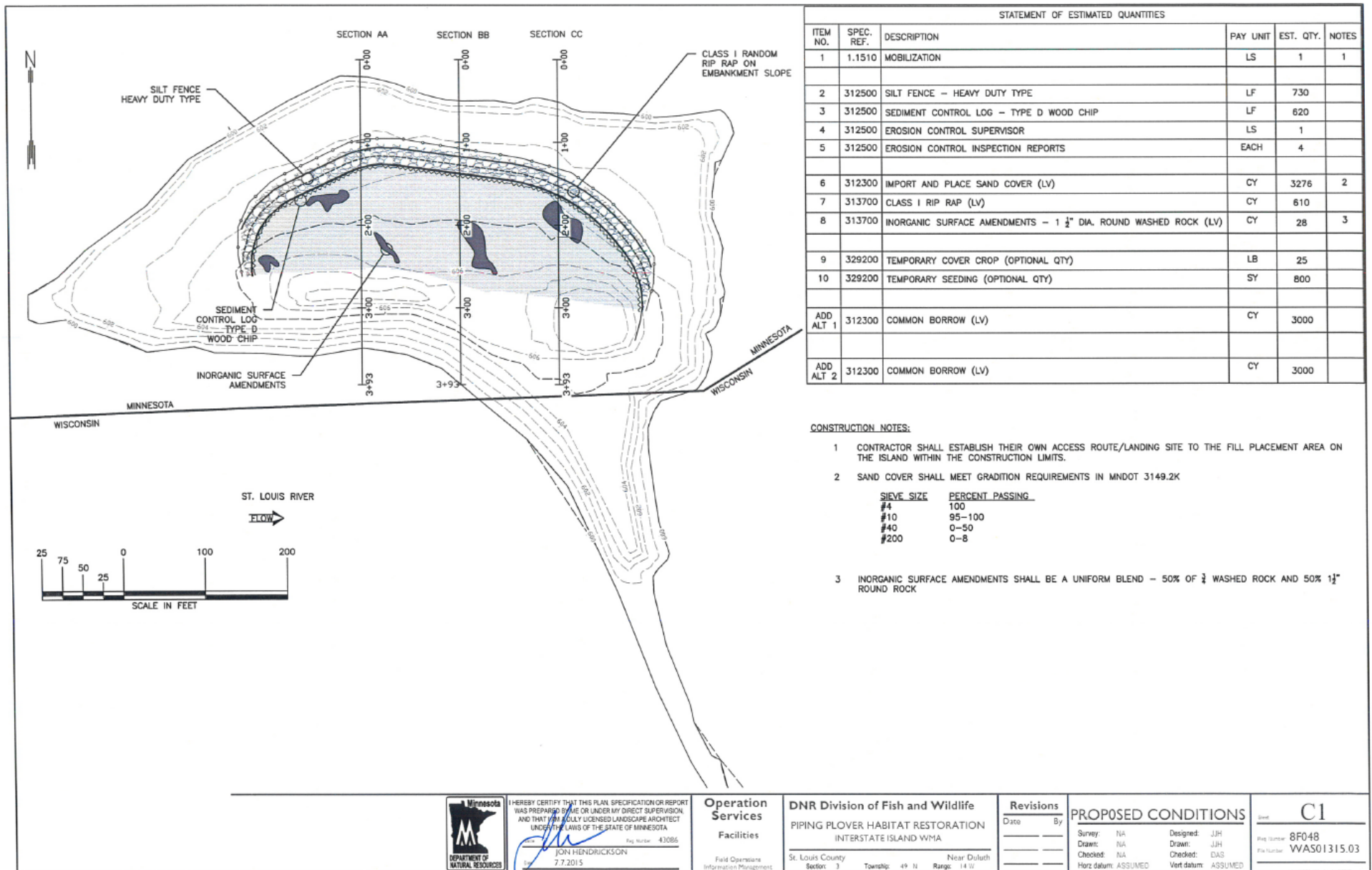


Figure 3. Phase I Construction Plans



Figure 4. Phase I Implementation Photo (September 2015).

Save: 6/7/2019 8:05 AM Iglenderning Plot: 6/7/2019 8:06 AM S:\KOWMIN\LAN1502975-final-dsgn\51-drawings\10-Civil\cad\dwg\exhibit\MN148586-EX4_REVISED.dwg

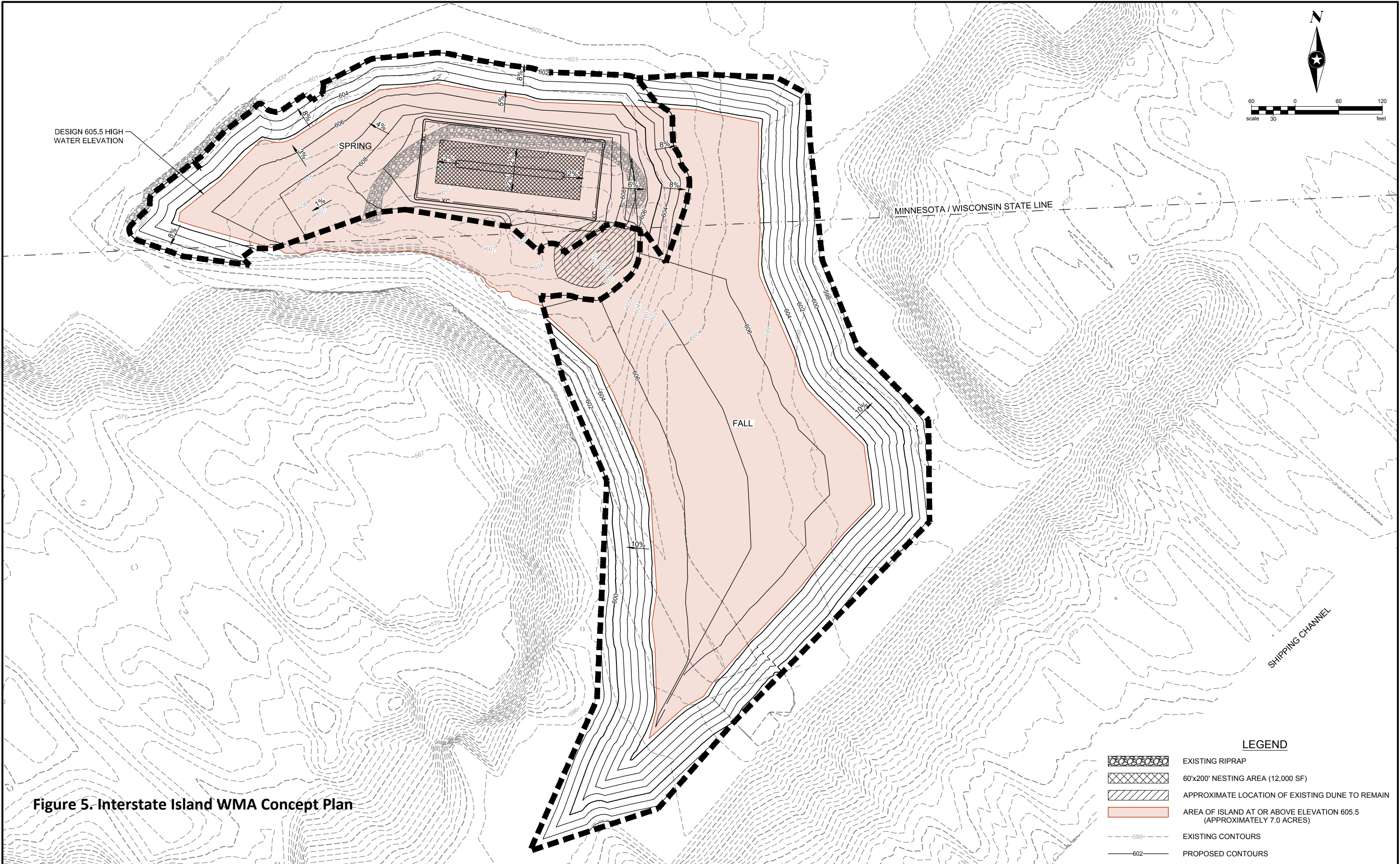


Figure 5. Interstate Island WMA Concept Plan

LEGEND

- EXISTING RIPRAP
- 60'x200' NESTING AREA (12,000 SF)
- APPROXIMATE LOCATION OF EXISTING DUNE TO REMAIN
- AREA OF ISLAND AT OR ABOVE ELEVATION 605.5 (APPROXIMATELY 7.0 ACRES)
- EXISTING CONTOURS
- PROPOSED CONTOURS

DRAWN BY:	KLK				
DESIGNER:	TPY				
CHECKED BY:	DRH				
DESIGN TEAM	NO.	BY	DATE	REVISIONS	

SEH
PHONE: 218.279.3000
418 W SUPERIOR ST
STE 200
DULUTH, MN 55802-1512
www.sehinc.com

I HEREBY CERTIFY THAT THIS PLAN WAS PREPARED BY ME OR UNDER MY DIRECT SUPERVISION AND THAT I AM A DULY LICENSED PROFESSIONAL ENGINEER UNDER THE LAWS OF THE STATE OF MINNESOTA.

Date: XX/XX/XX NAME, XX
Lic. No. XXXXXX

DULUTH,
MINNESOTA

**SITE LAYOUT
CONCEPT PLAN
INTERSTATE ISLAND**

FILE NO.
MNLAN 148586



Figure 6. Nesting area enhancements (gravel, driftwood, grid, fencing)

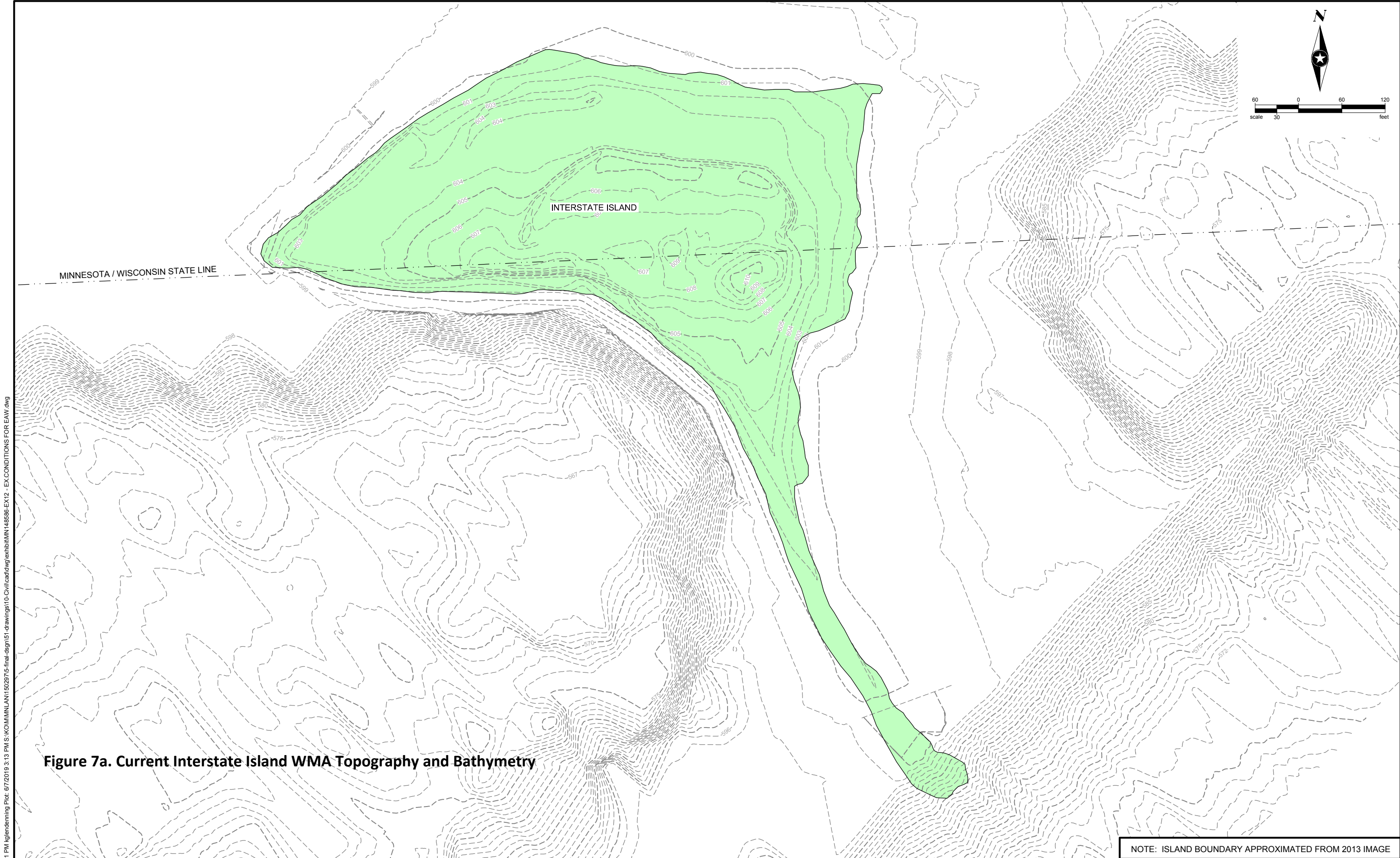


Figure 7a. Current Interstate Island WMA Topography and Bathymetry

NOTE: ISLAND BOUNDARY APPROXIMATED FROM 2013 IMAGE

DRAWN BY:	KLK				
DESIGNER:	TPY				
CHECKED BY:	DRH				
DESIGN TEAM	NO.	BY	DATE	REVISIONS	



PHONE: 218.279.3000
418 W SUPERIOR ST
STE 200
DULUTH, MN 55802-1512
www.sehinc.com

I HEREBY CERTIFY THAT THIS PLAN WAS PREPARED BY ME OR UNDER MY DIRECT SUPERVISION AND THAT I AM A DULY LICENSED PROFESSIONAL ENGINEER UNDER THE LAWS OF THE STATE OF MINNESOTA.

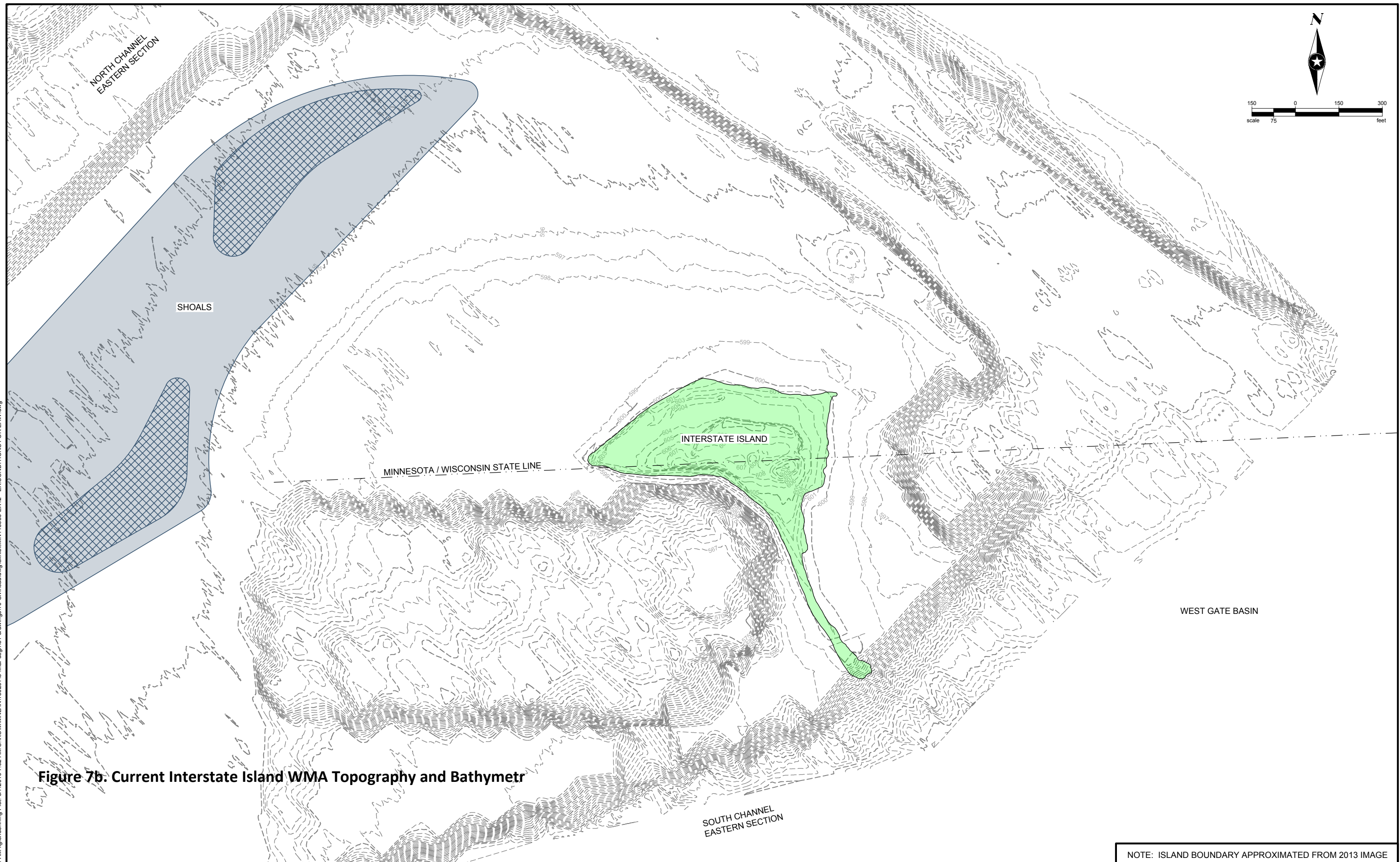
Date: XX/XX/XX

NAME, XX
Lic. No. XXXXXX

DULUTH,
MINNESOTA

EXISTING CONDITIONS
INTERSTATE ISLAND

FILE NO.
MNLAN 148586



NOTE: ISLAND BOUNDARY APPROXIMATED FROM 2013 IMAGE


DRAWN BY: KLG					<div><div>PHONE: 218.279.3000 418 W SUPERIOR ST STE 200 DULUTH, MN 55802-1512 www.sehinc.com</div></div>	<div>I HEREBY CERTIFY THAT THIS PLAN WAS PREPARED BY ME OR UNDER MY DIRECT SUPERVISION AND THAT I AM A DULY LICENSED PROFESSIONAL ENGINEER UNDER THE LAWS OF THE STATE OF MINNESOTA.</div> <div><div>Date: XX/XX/XX</div><div><div>NAME, XX</div><div>Lic. No. XXXXXXX</div></div></div>	DULUTH, MINNESOTA	EXISTING CONDITIONS INTERSTATE ISLAND	FILE NO. MNLAN 148586	<div><div>1</div><div>1</div></div>
DESIGNER: TPY										
CHECKED BY: DRH										
DESIGN TEAM	NO.	BY	DATE	REVISIONS						



Figure 8a. Design Alternative 1, Riprap Shore



Figure 8b. Design Alternative 2, Southwest Fill



Figure 8c. Design Alternative 3, Northwest Fill

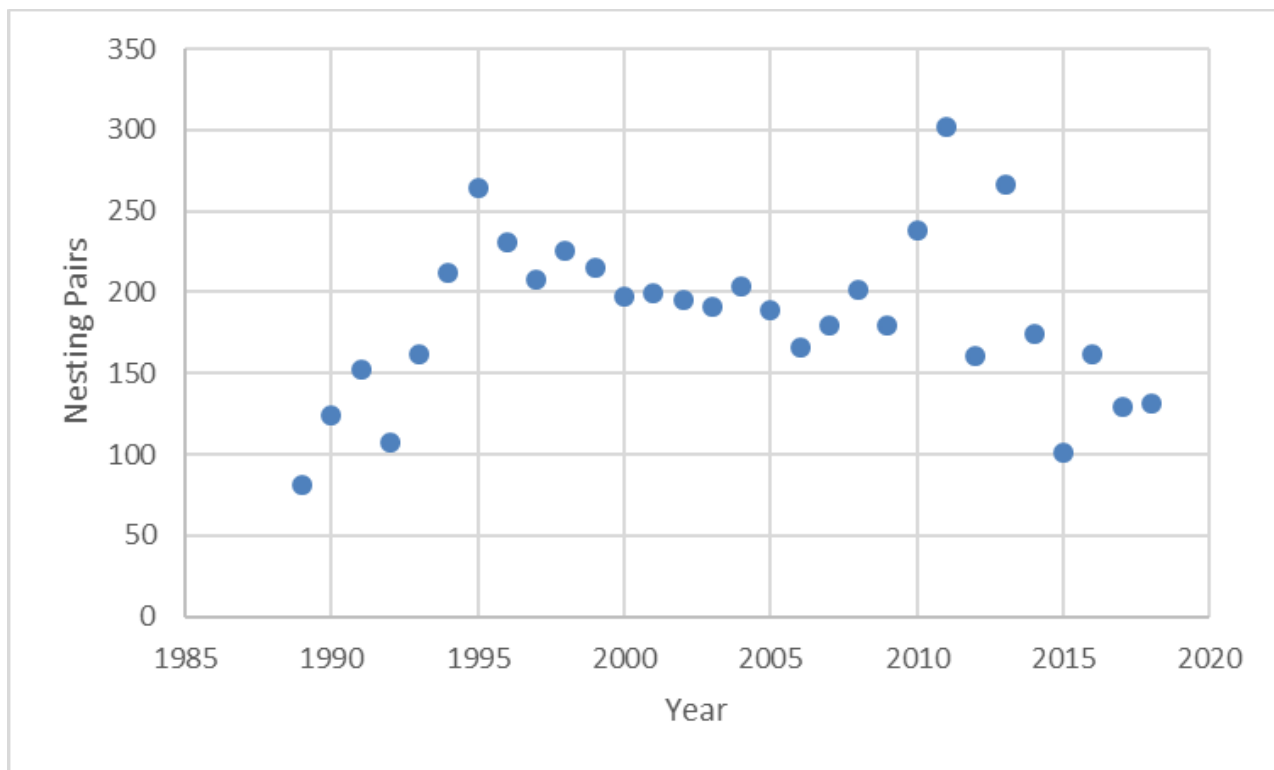


Figure 9. Interstate Island WMA Common Tern nesting counts (1989-2018)