

Exhibits

Exhibit 1: Location Map

Exhibit 2: Project Components Map

Exhibit 3: Land Cover Maps

Exhibit 4: Land Use Map

Exhibit 5: USDA Soils Maps

Exhibit 6: NWI Map

Exhibit 7: Public Waters Maps

Exhibit 8: MPCA Impaired Waters Map

Exhibit 9: MPCA What's in My Neighborhood Map

Exhibit 10: MBS Sites of Biodiversity Significance Map

Exhibit 11: MBS Native Plant Communities Map

Exhibit 12: SHPO Minnesota Statewide Historic Inventory Portal

Exhibit 13: SHPO Office of the State Archaeologist (OSA) Portal

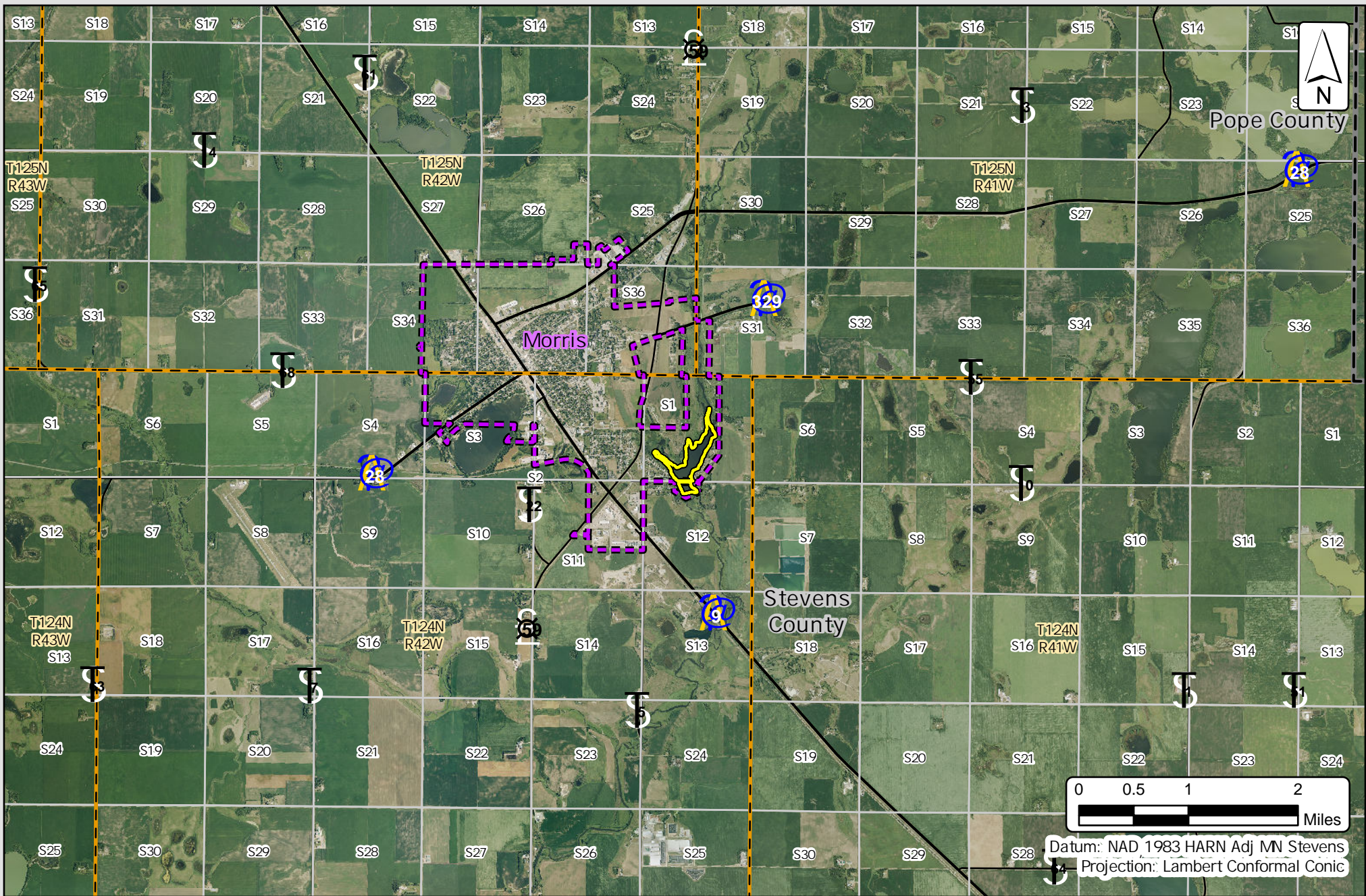


Exhibit 1: Project Location Map
 Crissy Lake Outlet Dam Modification Project
 Pomme de Terre River Association

Legend

- Area of Interest
- US Highway
- State Highway
- County Roads
- Cities
- County
- Townships
- Sections

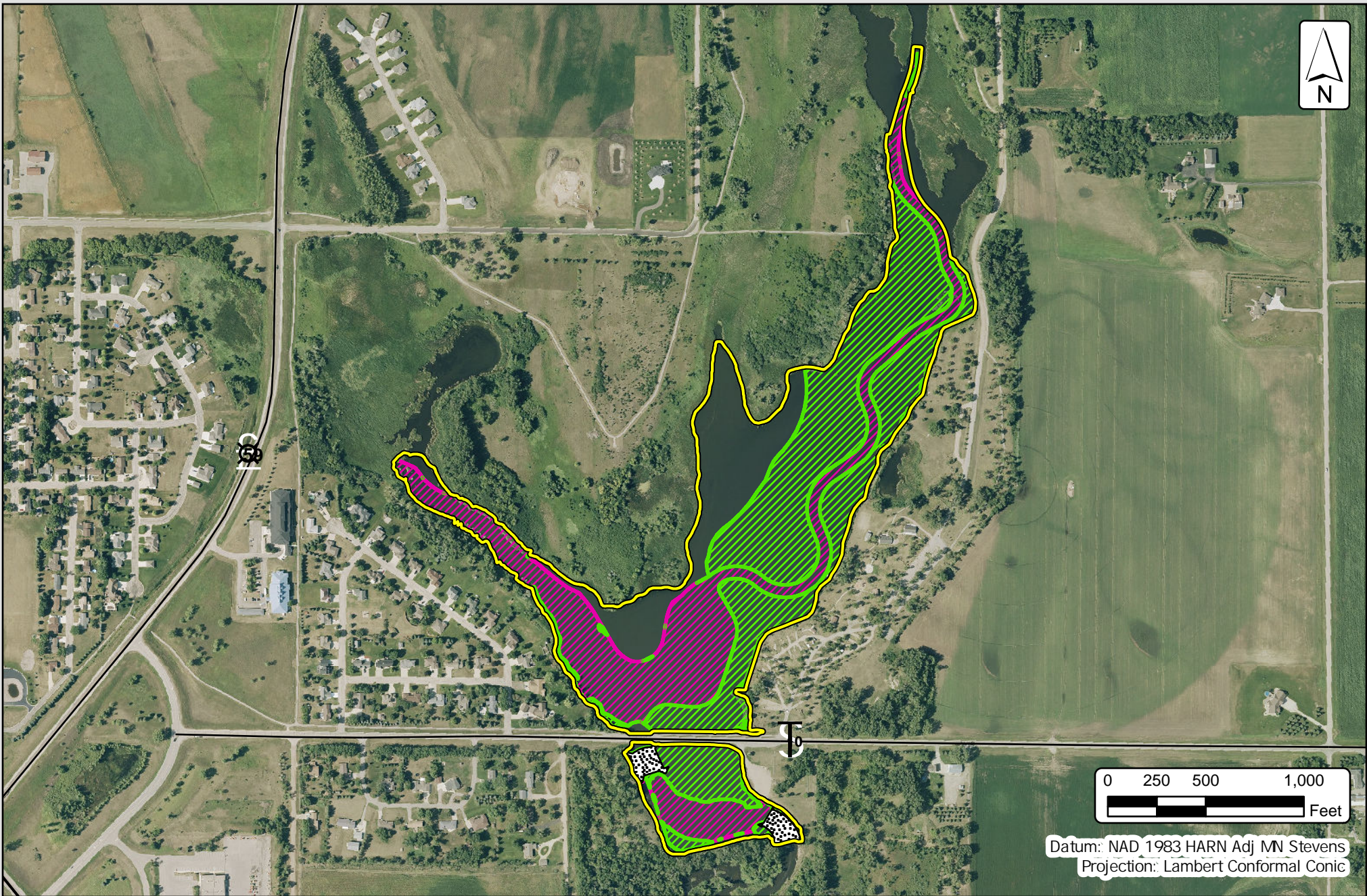


Exhibit 2: Project Components Map

Crissy Lake Outlet Dam Modification Project
Pomme de Terre River Association

Legend

- | | |
|------------------|--------------------------------|
| Area of Interest | Construction Activities |
| US Highway | Excavation |
| State Highway | Fill |
| County Roads | Rock Arch Rapids |

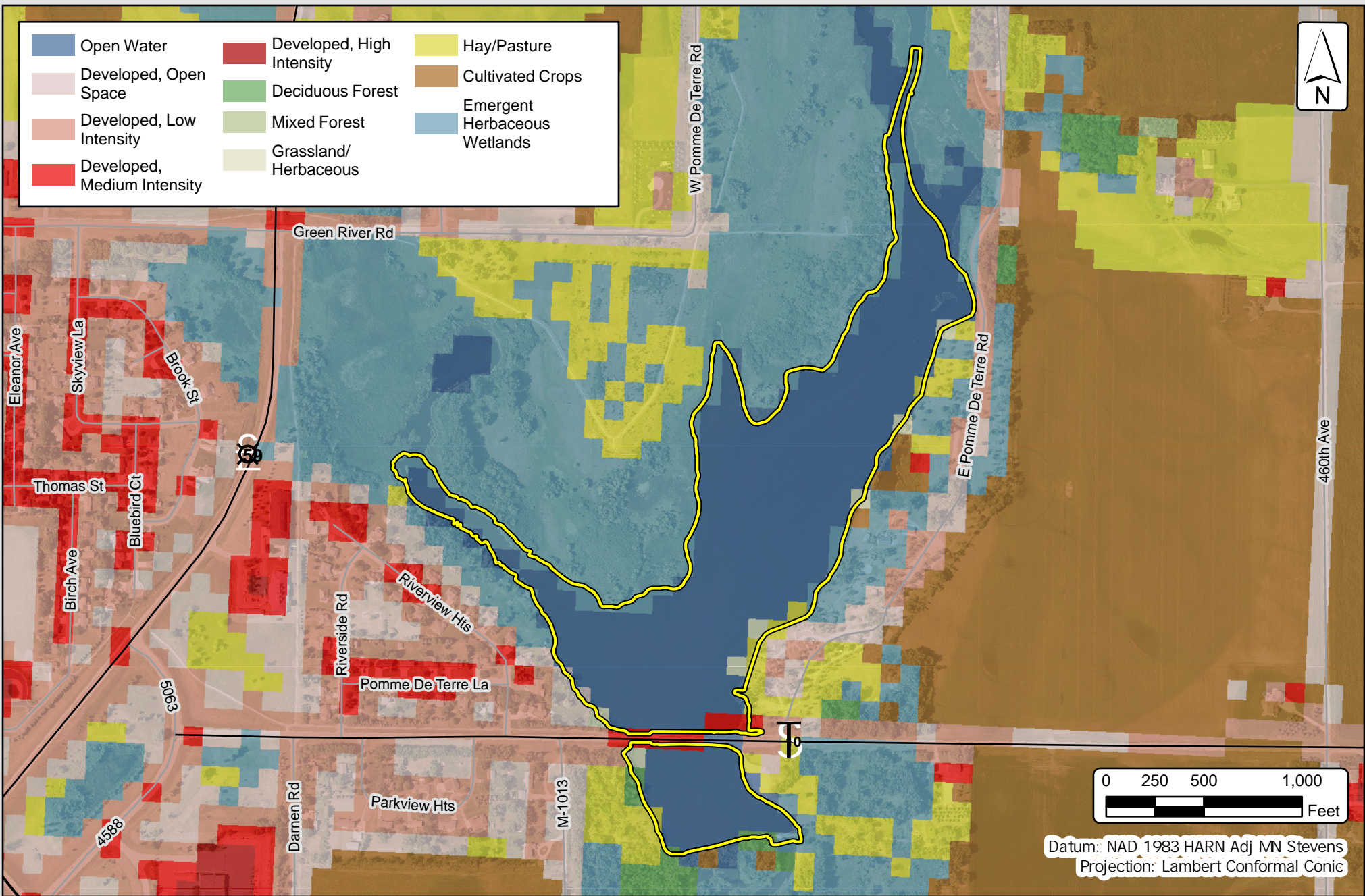
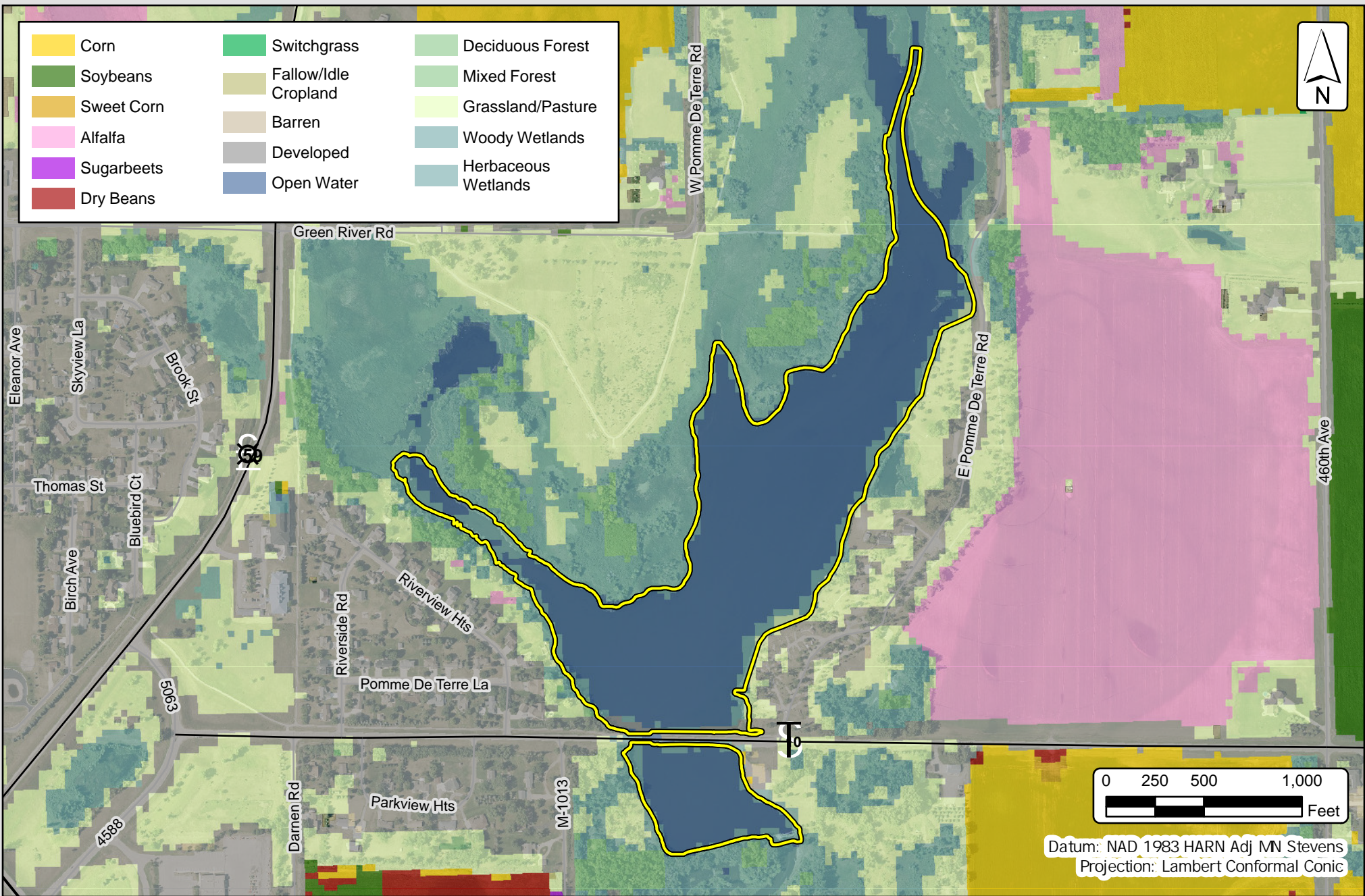


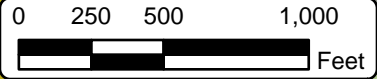
Exhibit 3: Land Cover Map
 Crissy Lake Outlet Dam Modification Project
 Pomme de Terre River Association

Legend

- Area of Interest
- US Highway
- State Highway
- County Roads
- Other Roads



	Corn		Switchgrass		Deciduous Forest
	Soybeans		Fallow/Idle Cropland		Mixed Forest
	Sweet Corn		Barren		Grassland/Pasture
	Alfalfa		Developed		Woody Wetlands
	Sugarbeets		Open Water		Herbaceous Wetlands
	Dry Beans				



Datum: NAD 1983 HARN Adj MN Stevens
 Projection: Lambert Conformal Conic



Exhibit 4: Land Use Map
 Crissy Lake Outlet Dam Modification Project
 Pomme de Terre River Association

Legend

- Area of Interest
- County Roads
- US Highway
- Other Roads
- State Highway

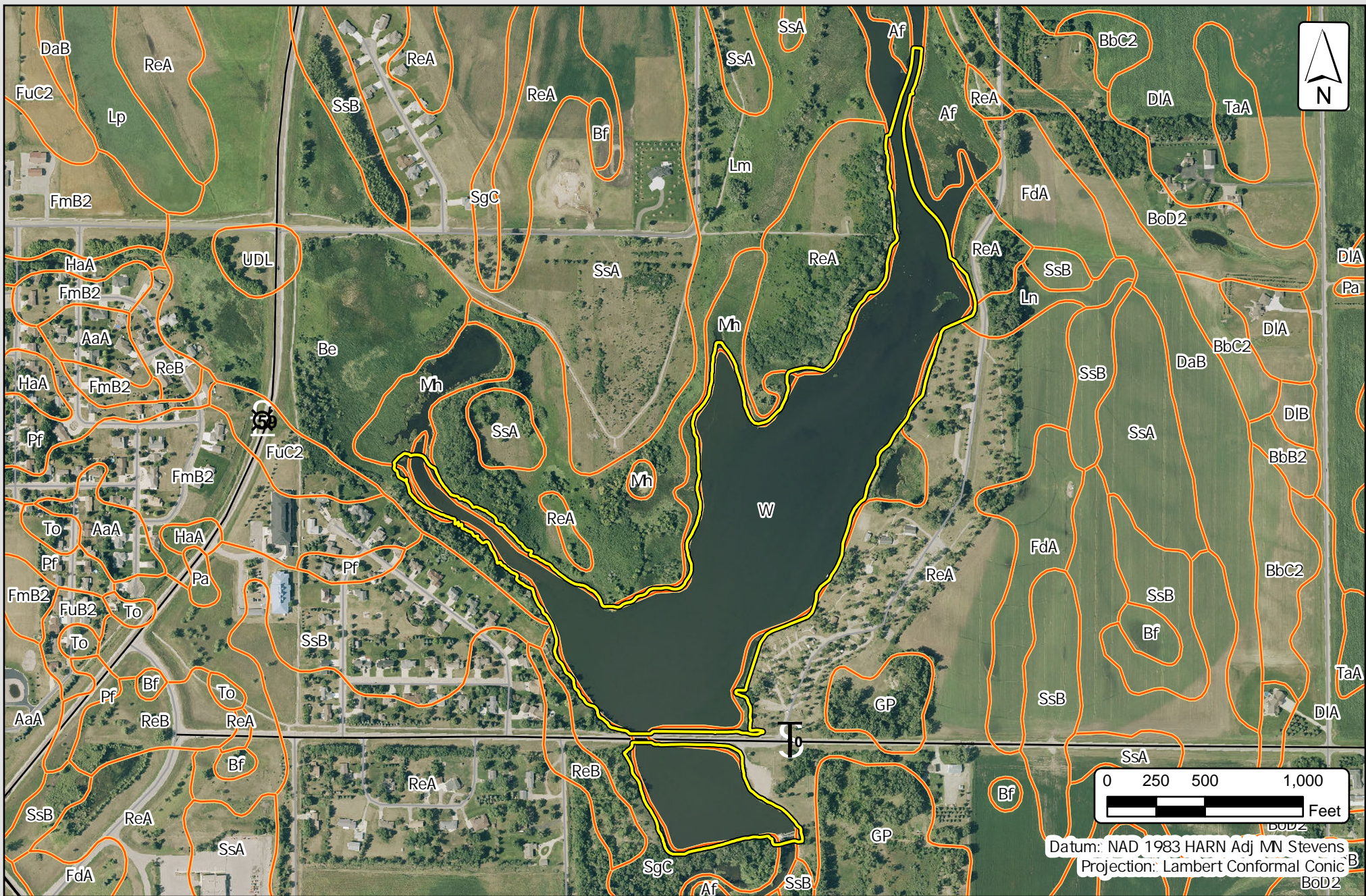


Exhibit 5: USDA Soils Map
 Crissy Lake Outlet Dam Modification Project
 Pomme de Terre River Association

Legend

- | | |
|------------------|---------------|
| Area of Interest | State Highway |
| Map Unit Name | County Roads |
| US Highway | Other Roads |

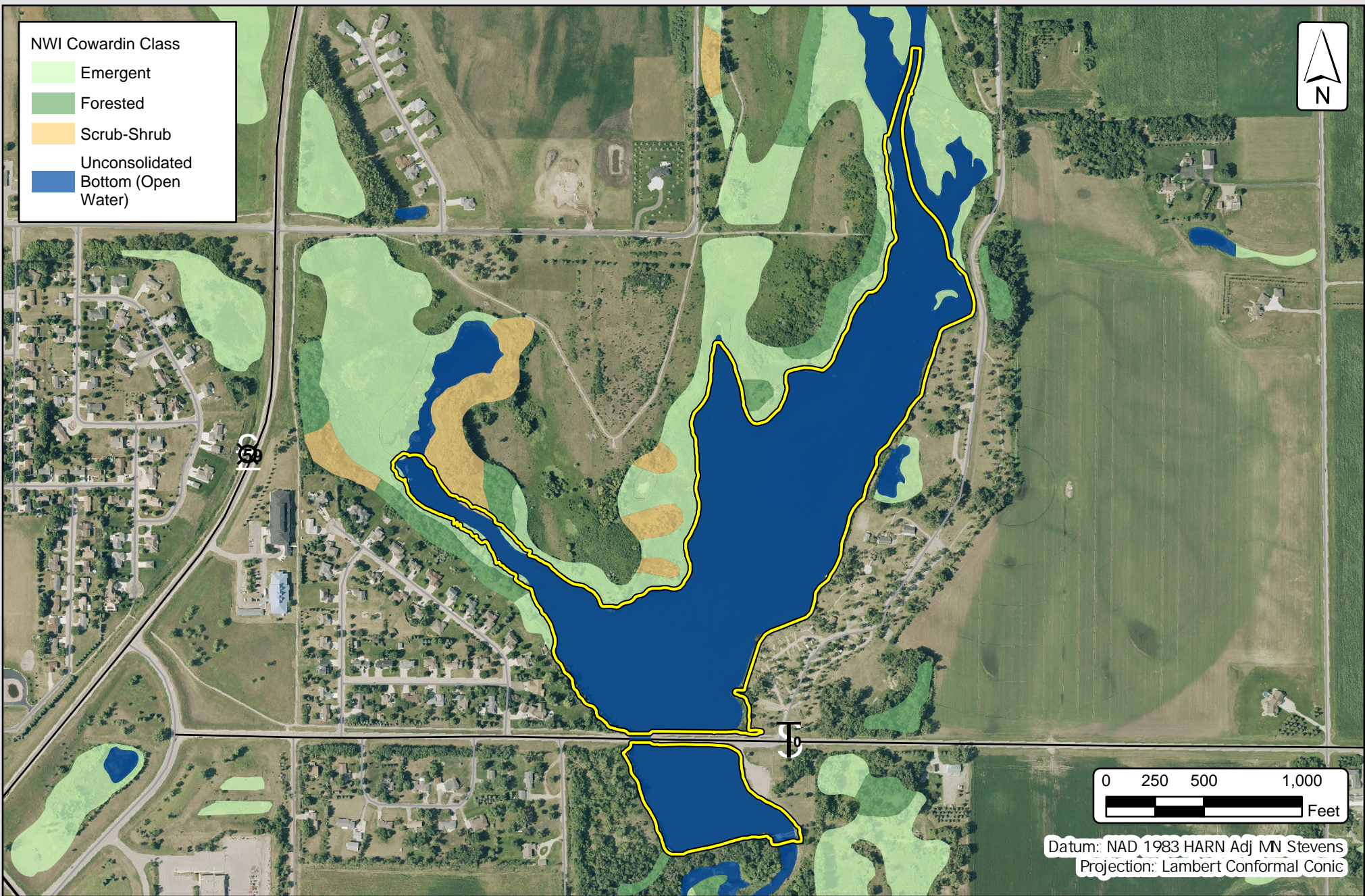
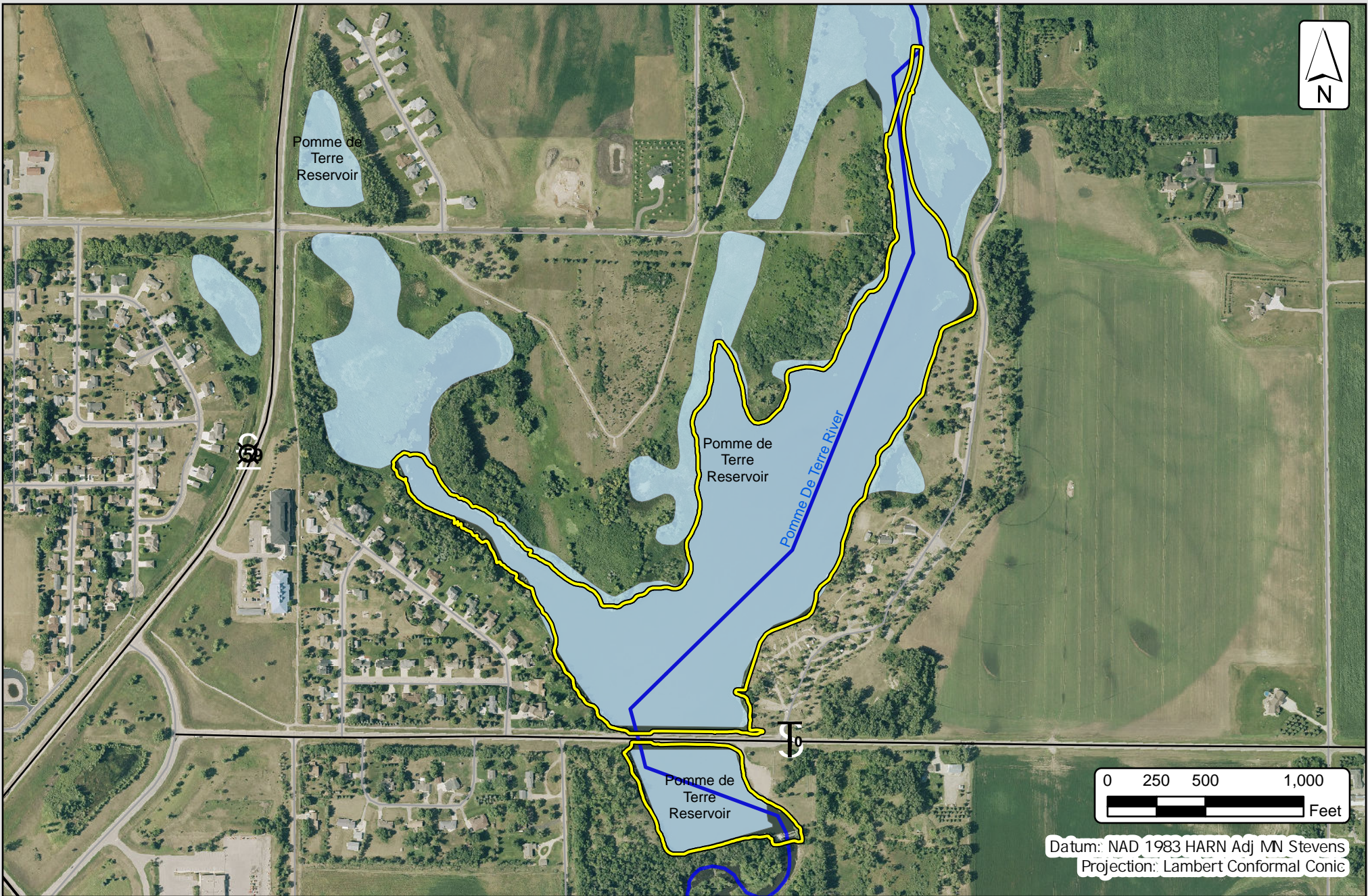


Exhibit 6: National Wetland Inventory Map

Crissy Lake Outlet Dam Modification Project
 Pomme de Terre River Association

Legend

- Area of Interest
- US Highway
- State Highway
- County Roads
- Other Roads



Datum: NAD 1983 HARN Adj MN Stevens
 Projection: Lambert Conformal Conic



Exhibit 7: Public Waters Inventory Map
 Crissy Lake Outlet Dam Modification Project
 Pomme de Terre River Association

Legend

- Area of Interest
- Public Water Basin
- Public Water Watercourse
- US Highway
- State Highway
- County Roads
- Other Roads

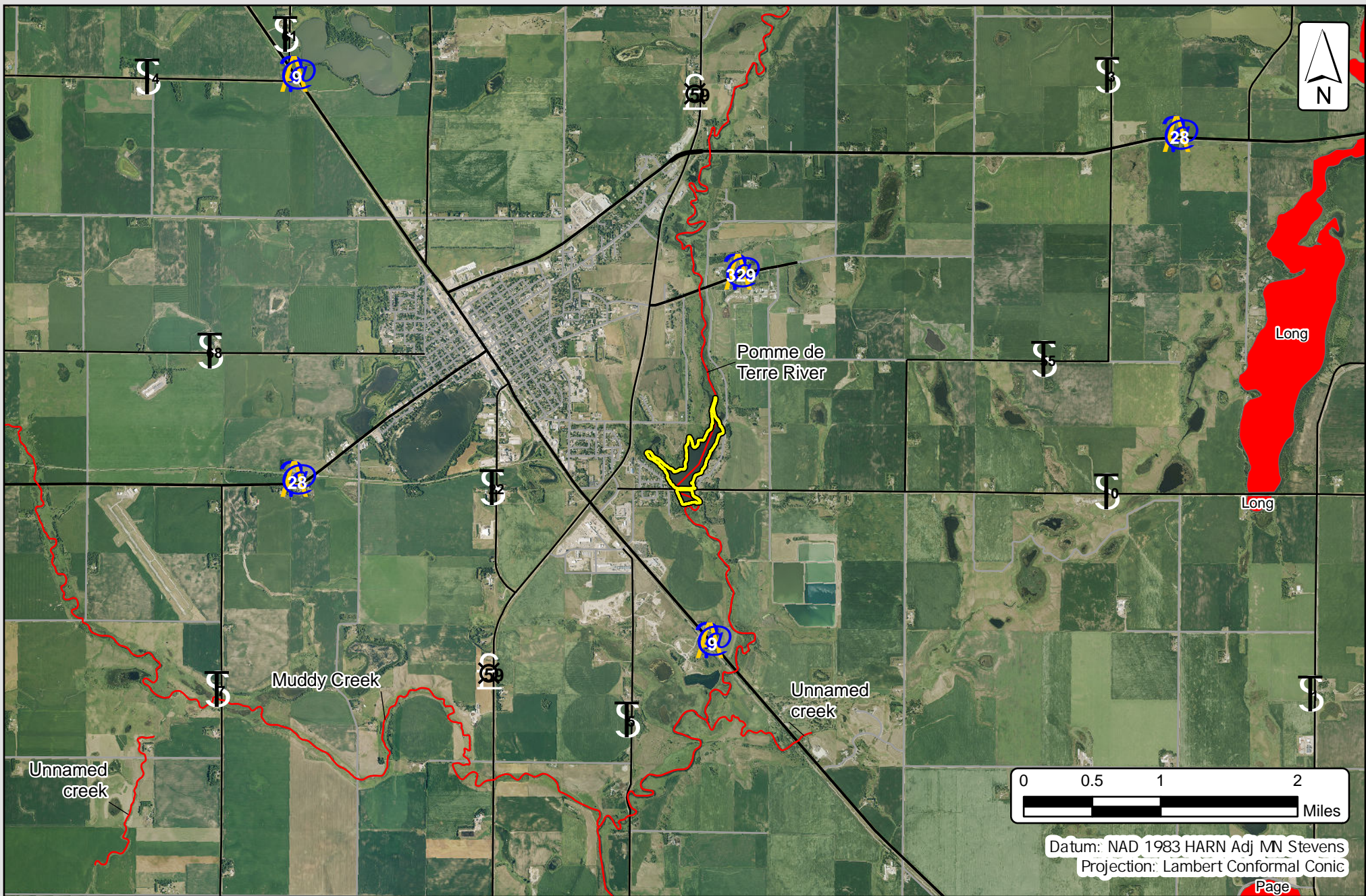


Exhibit 8: MPCA Impaired Waters Map
 Crissy Lake Outlet Dam Modification Project
 Pomme de Terre River Association

Legend	Area of Interest	US Highway
	Impaired Wetlands 2024	State Highway
	Impaired Lakes 2024	County Roads
	Impaired Streams 2024	Other Roads

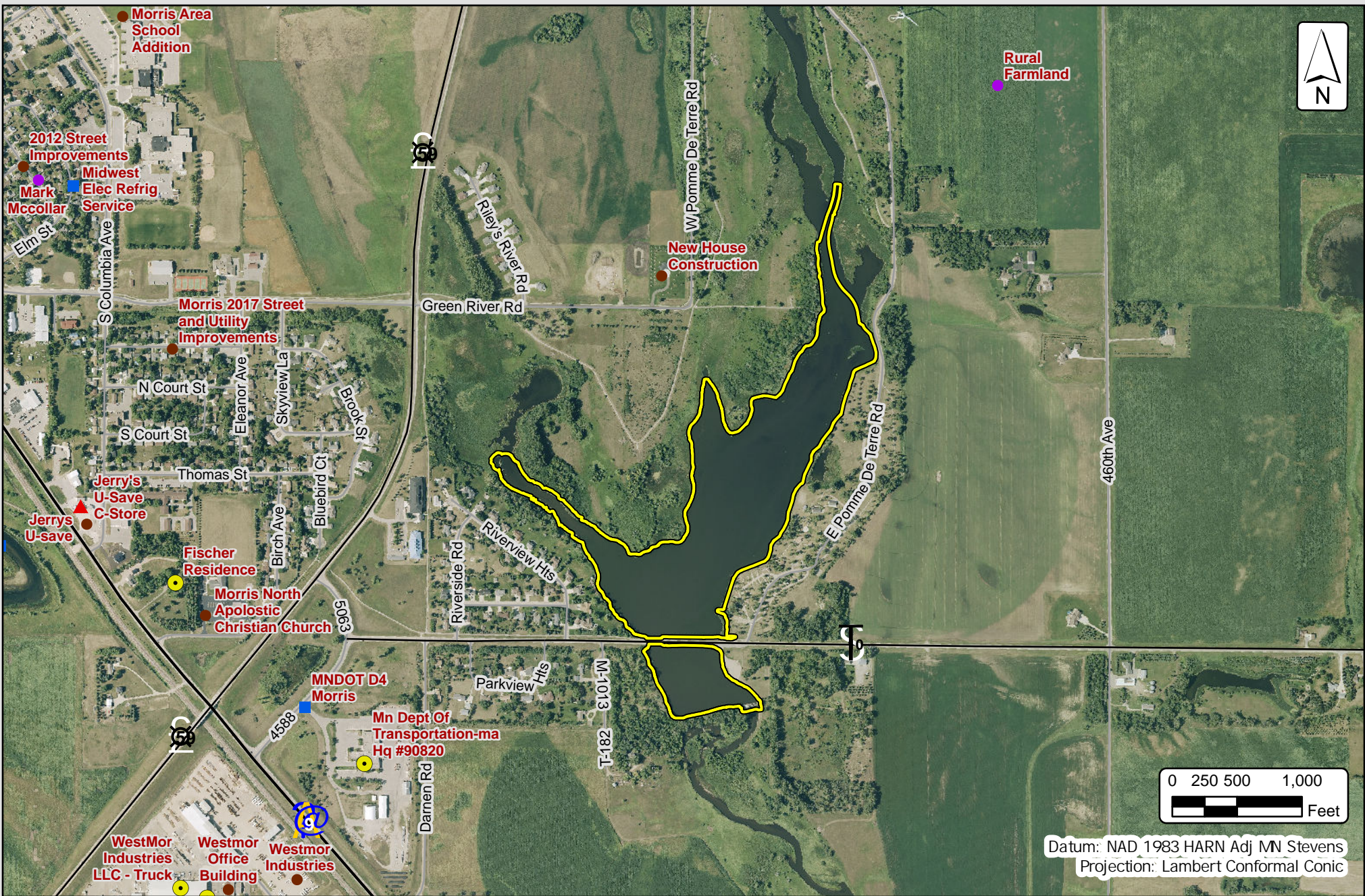


Exhibit 9: MPCA What's in my Neighborhood Map

Crissy Lake Outlet Dam Modification Project
 Pomme de Terre River Association

Legend

- Area of Interest
- Multiple Programs
- Hazardous Waste
- Investigation and Cleanup
- Stormwater
- ▲ Tanks

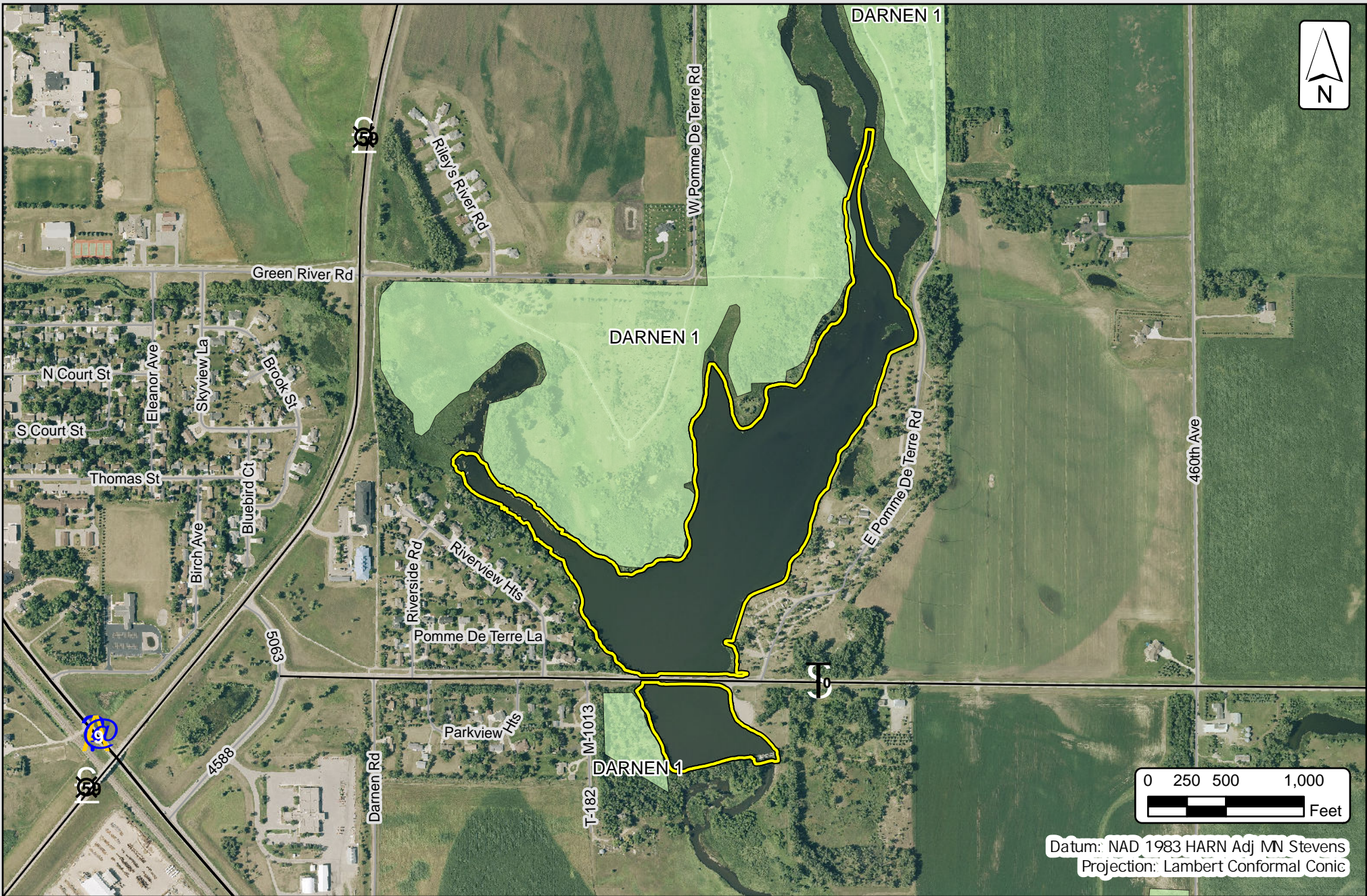


Exhibit 10: MBS Sites of Biodiversity Significance Map

Crissy Lake Outlet Dam Modification Project
 Pomme de Terre River Association

Legend

- Area of Interest
- Outstanding
- High
- Moderate
- Below

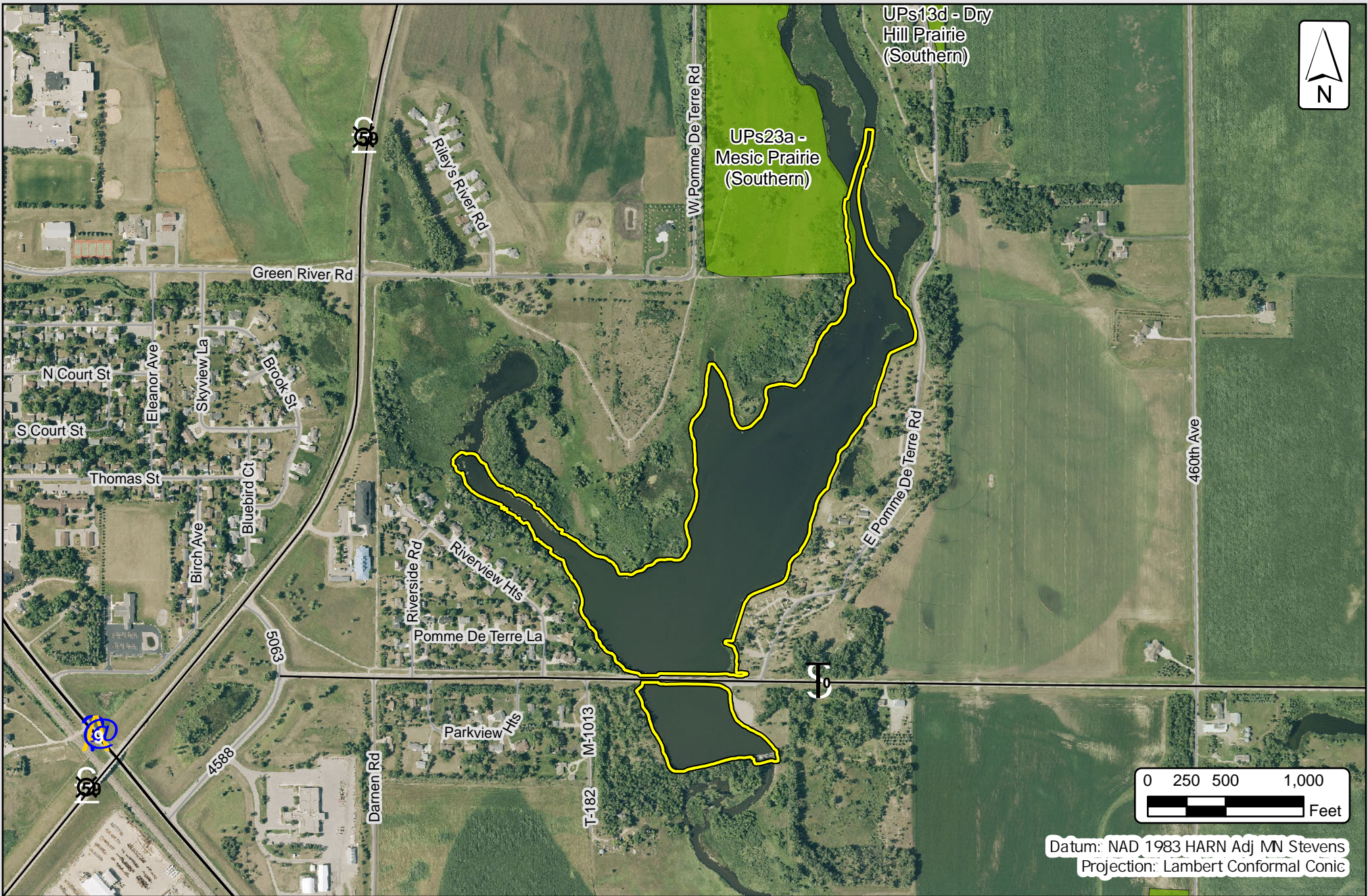


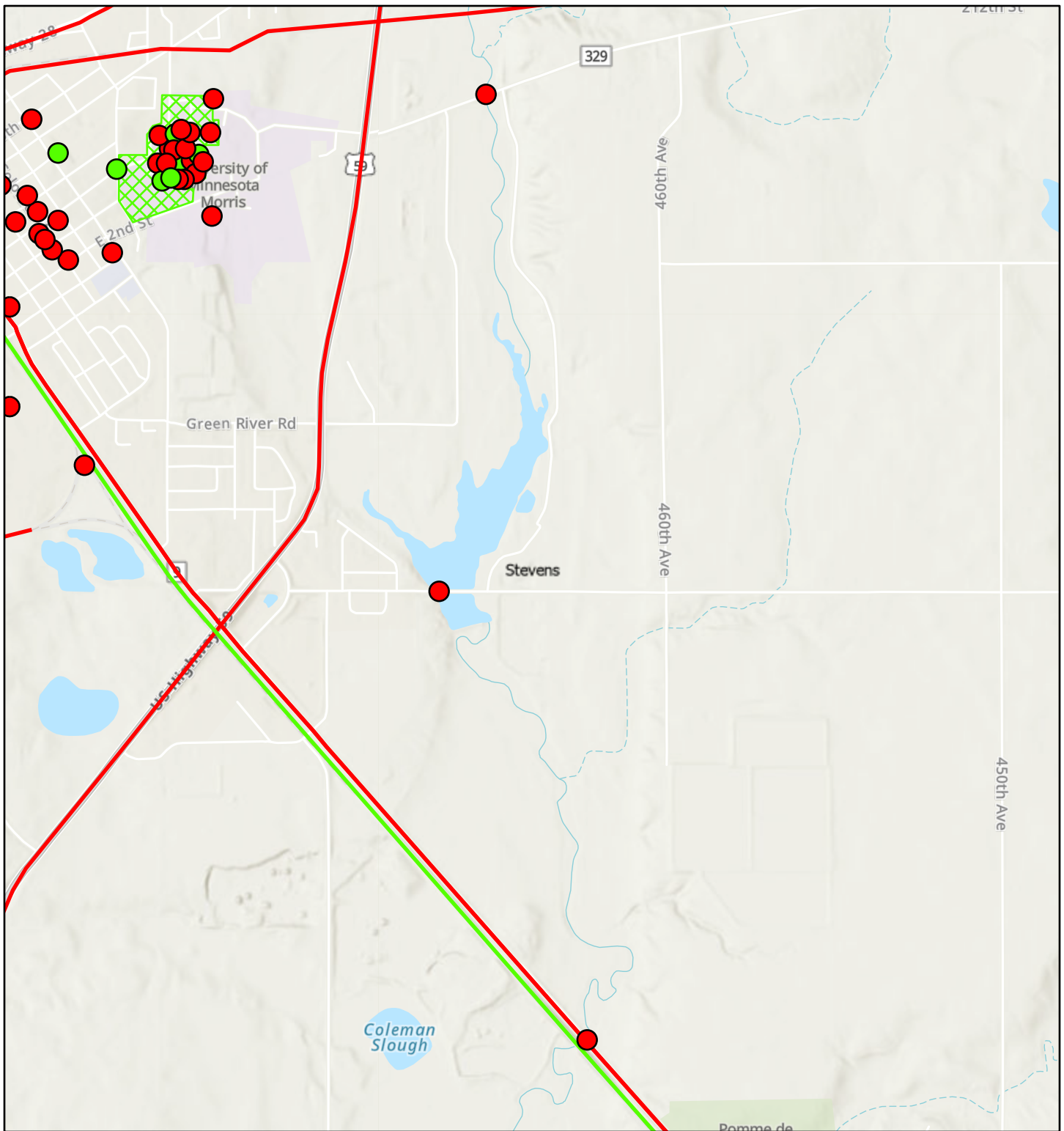
Exhibit 11: MBS Native Plant Communities Map

Crissy Lake Outlet Dam Modification Project
Pomme de Terre River Association

Legend

-  Area of Interest
-  S1-S3
-  Possible S1-S3
-  Not S1-S3
-  Not available at this level

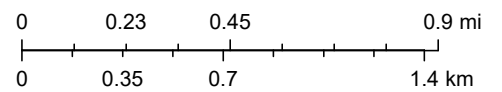
Exhibit 12: SHPO Minnesota Statewide Historic Inventory Portal



12/4/2025

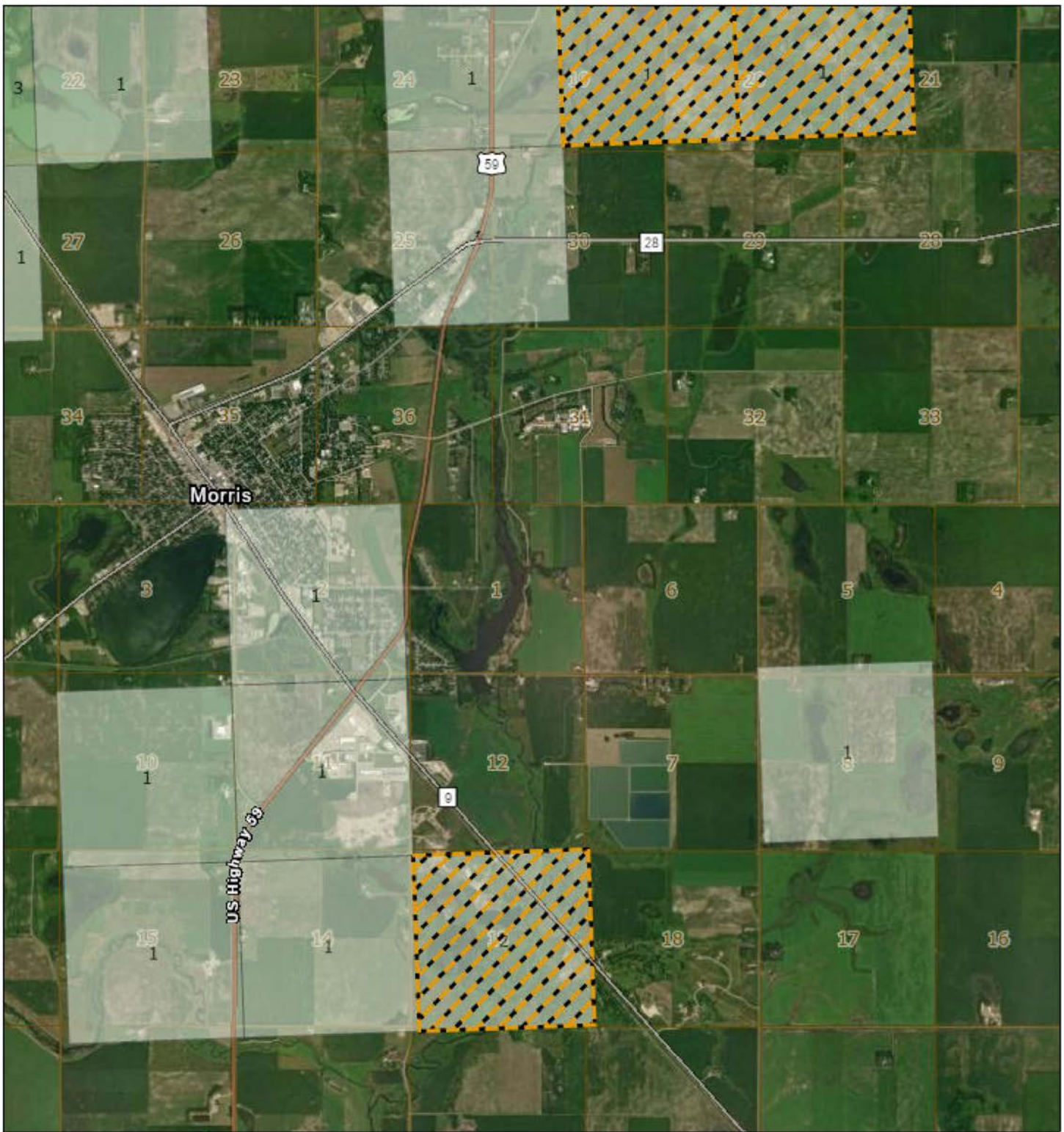
1:37,516

- | | |
|--|--|
| MnSHIP Points | — Inventoried |
| ● NR Listed or Eligible | MnSHIP Polygons |
| ● Inventoried | NR Listed or Eligible |
| MnSHIP Lines | County Boundaries |
| — NR Listed or Eligible | |






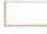
MN Dept Natural Resources, Esri, TomTom, Garmin, SafeGraph, GeoTechnologies, Inc, METI/NASA, USGS, EPA, NPS, USDA, USFWS, Esri, NASA, NGA, USGS, FEMA

Exhibit 13: SHPO Office of the State Archaeologist (OSA) Portal

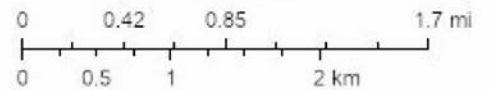


12/4/2025

1:72,575

-  Minnesota Indian Affairs Council Spatial Layer
- OSA Site Summary
-  Fewer than 3
-  3 - 5
-  Public Land Survey Sections

- World Imagery
- Low Resolution 15m Imagery
- High Resolution 60cm Imagery
- High Resolution 30cm Imagery
- Citations



MN Dept Natural Resources, Esri, TomTom, Garmin, SafeGraph, GeoTechnologies, Inc, METINASA, USGS, EPA, NPS, USDA, USFWS, Earthstar Geographics