

**CAMDEN STATE PARK
INSTRUCTOR'S CABIN REMOVAL,
LYON COUNTY PROJECT EAW**

LIST AND TITLE OF FIGURES

- | | |
|-----------------|---|
| FIGURE 1 | CAMDEN STATE PARK INSTRUCTOR'S
CABIN REMOVAL, LYON COUNTY |
| FIGURE 2 | CAMDEN STATE PARK INSTRUCTOR'S
CABIN REMOVAL, USGS 1:24,000 |
| FIGURE 3 | CAMDEN STATE PARK VISITOR MAP
WITH PROJECT LOCATION |
| FIGURE 4 | CAMDEN STATE PARK INSTRUCTOR'S
CABIN REMOVAL, PROJECT SITE |
| FIGURE 5 | CAMDEN STATE PARK INSTRUCTOR'S
CABIN REMOVAL, HISTORIC DISTRICT
BOUNDARY |
| FIGURE 6 | CAMDEN STATE PARK INSTRUCTOR'S
CABIN REMOVAL, PHOTOS |

Figure 1: Camden State Park Instructor's Cabin Removal, Lyon County

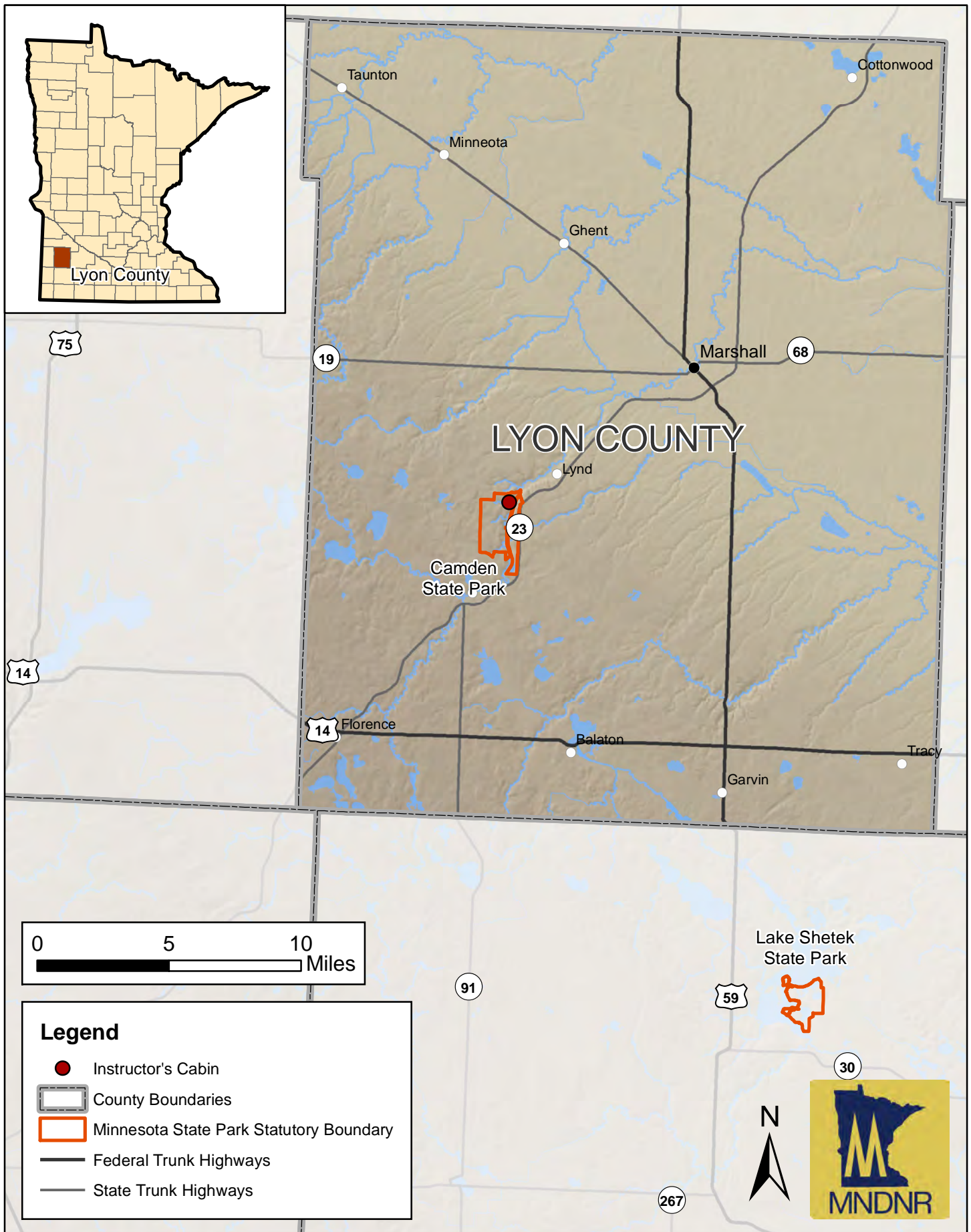


Figure 2: Camden State Park Instructor's Cabin Removal, USGS 1:24,000

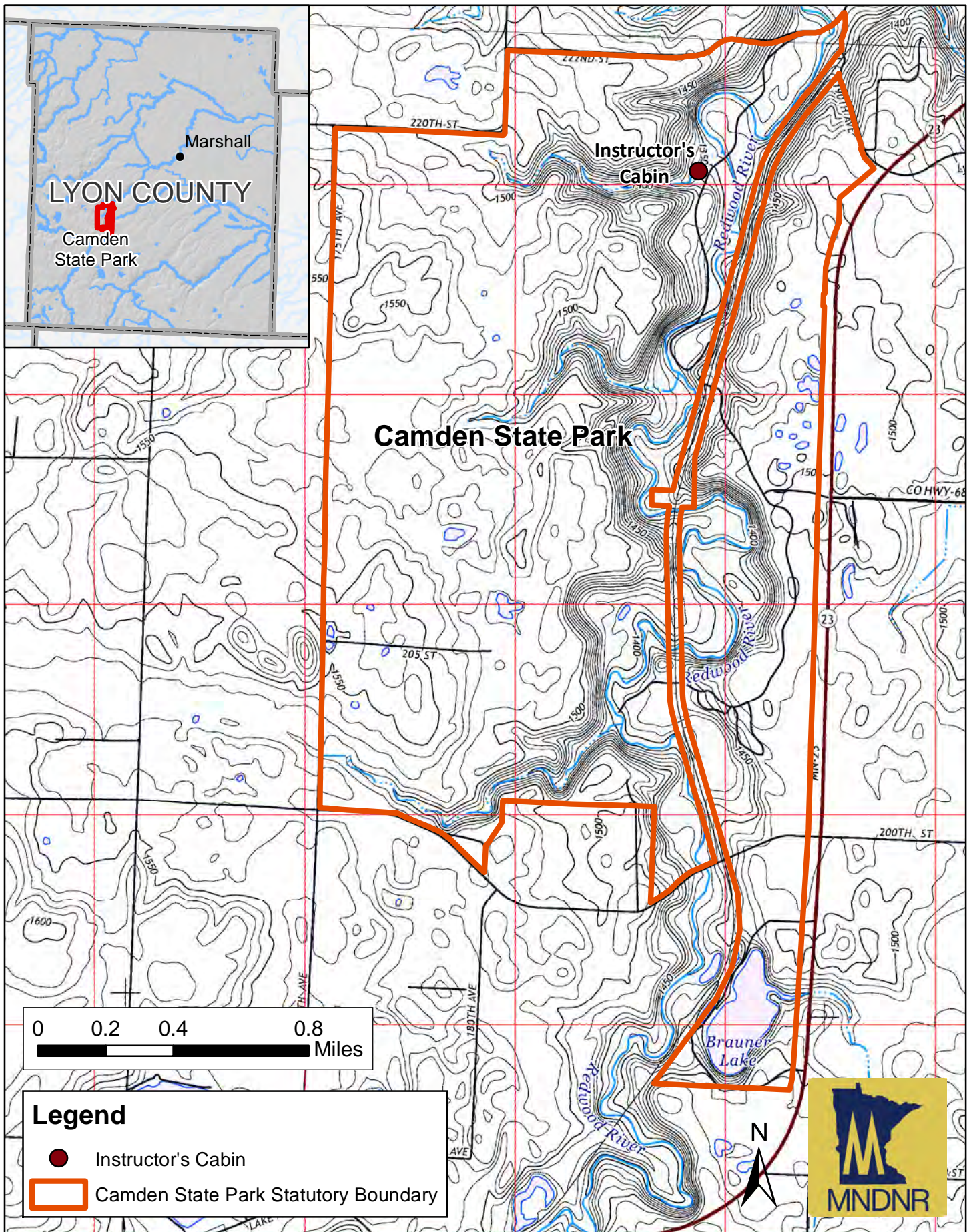


Figure 3. Camden State Park Visitor Map with Project Location

CAMDEN STATE PARK

SUMMER FACILITIES AND FEATURES

- 80 semi-modern campsites (34 with electric hook-up)
- Dump station, flush toilets and showers
- Primitive group camp (50 capacity)
- 3 picnic grounds, two with a shelter
- Spring-filled swimming pond
- 14.9 miles of hiking trails
- 10.2 miles of horseback trail
- 4.7 miles of mountain bike riding trail
- Horse riders' campground
- Historic Redwood Guest Lodge

VISITOR FAVORITES

- Dakota Valley Trail
- Maple-basswood forest
- Bubbling clear springs
- Swimming beach
- Trout fishing
- Brawner Lake
- Bluebirds
- Souvenir items

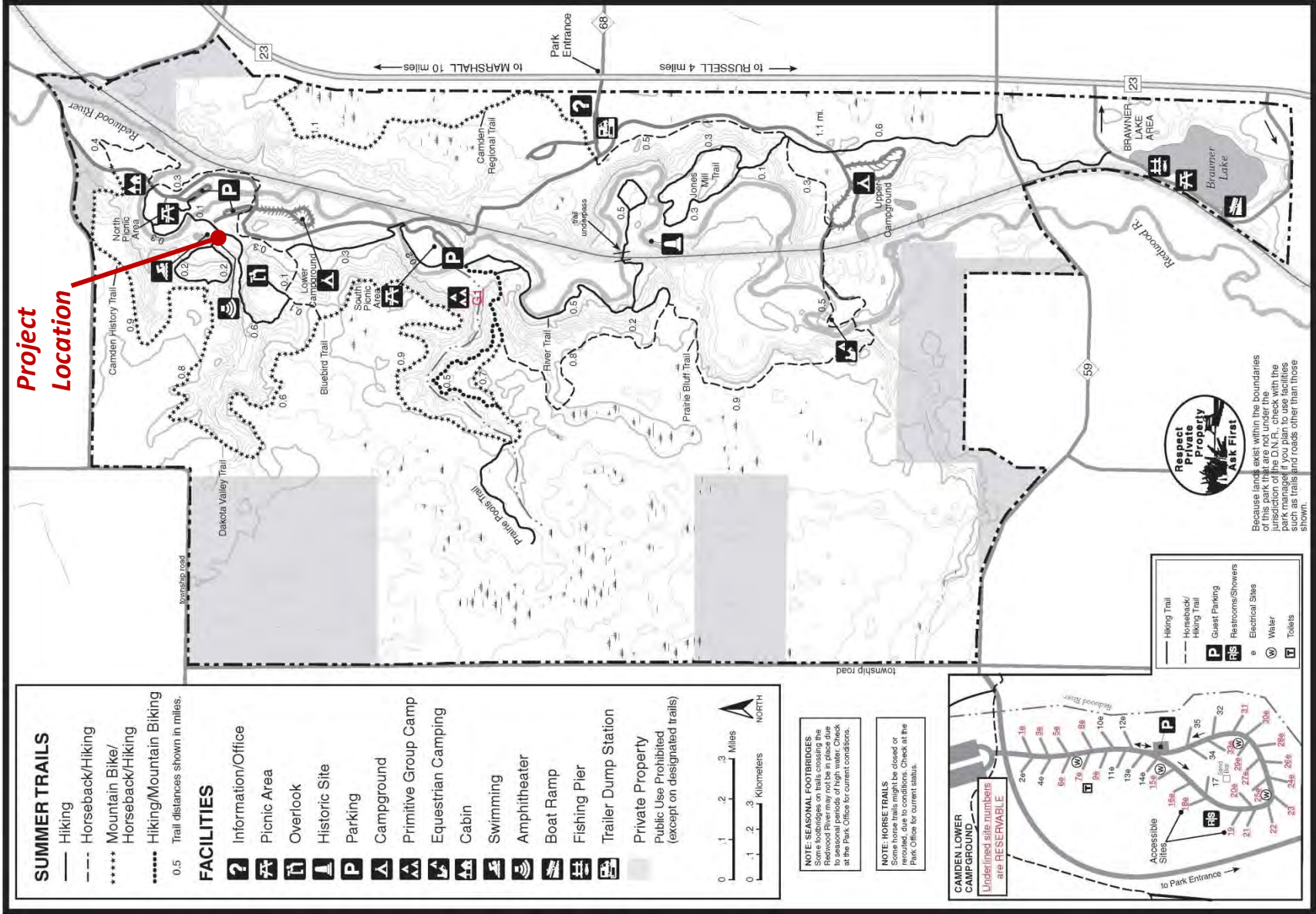


Figure 4: Camden State Park Instructor's Cabin Removal, Project Site

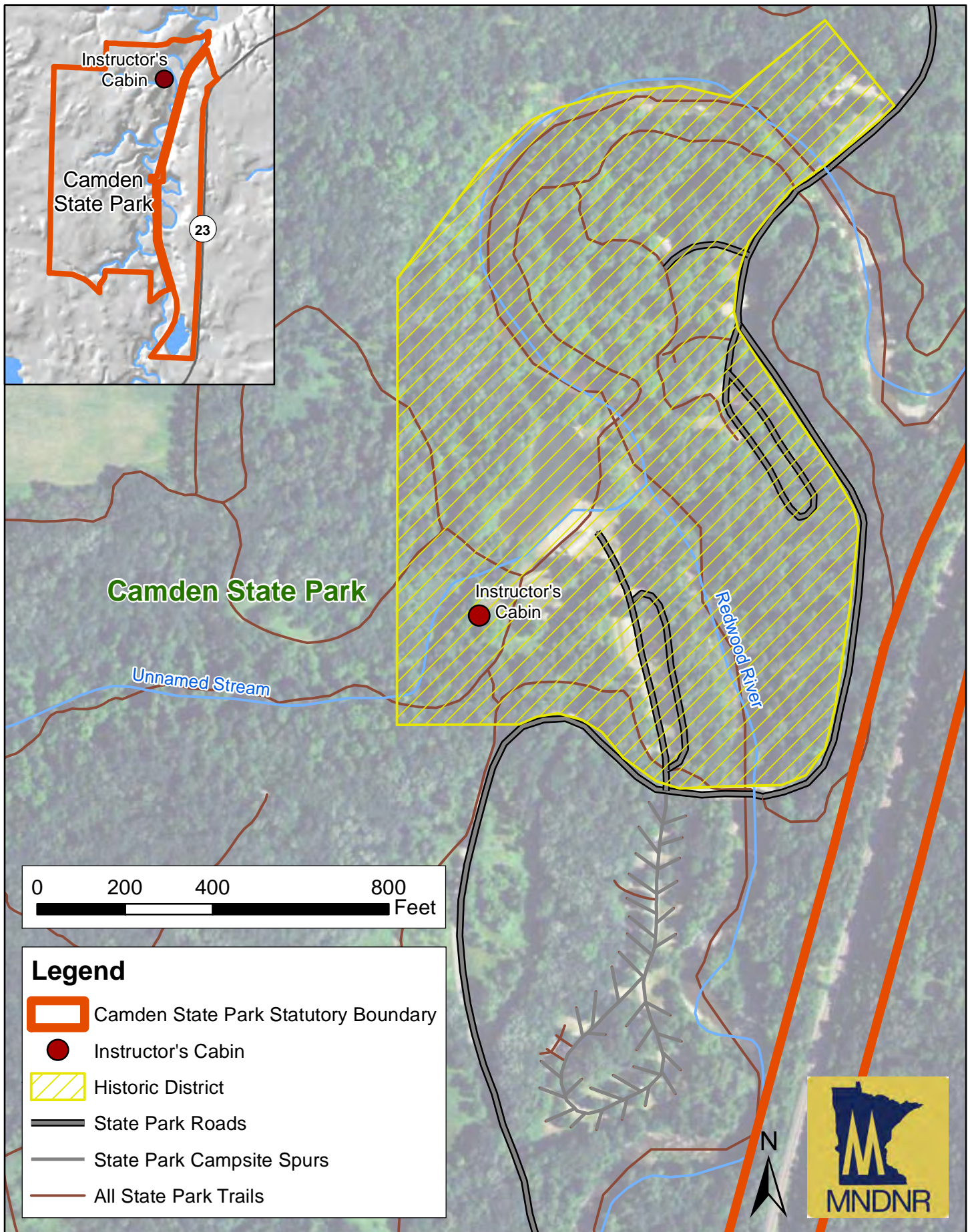
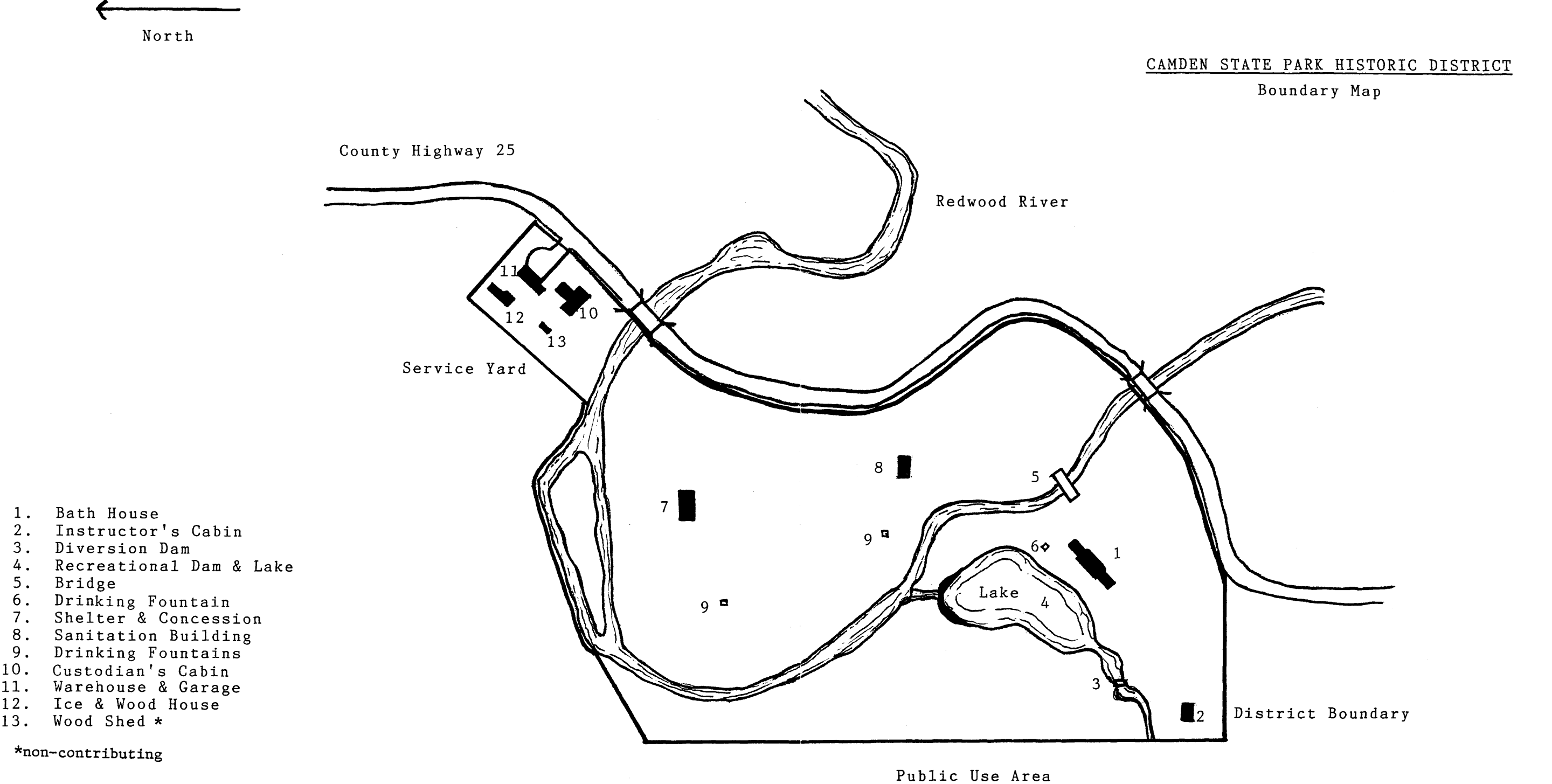


Figure 5: Camden State Park Instructor's Cabin Removal, Historic District Boundary



September 1988

1" = approximately 200 feet

Figure 6: Camden State Park Instructor's Cabin Removal, Photos



Past conditions, 2005 (above), prior to storm damage. Present conditions, 2012 (below), 2015 (right).

