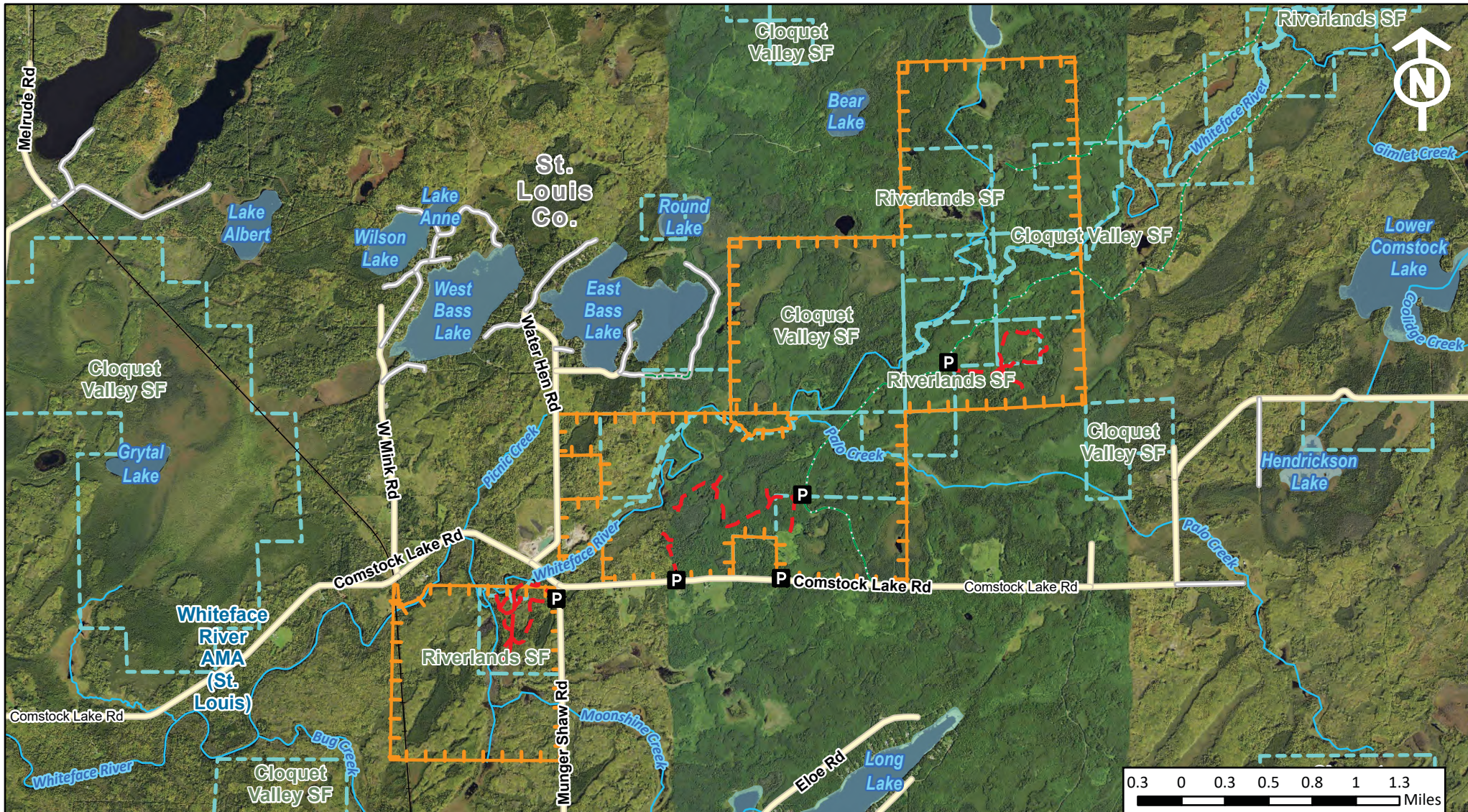


Whiteface River RGMA



-  Ruffed Grouse Management Areas
-  State Forest Land
-  Parking Areas
-  RGMA Access Points
-  County Highway
-  Township or Other Road
-  State Forest Roads
-  Hunter Walking Trails
-  DOT Railroads
-  Public Water Watercourse
-  Public Waters Basins

User Note: There are additional access points along CSAH 52 and the Soderlund State Forest Road (see map)

Directions: From Cotton go 6.7 miles E on CSAH 52 then 0.1 miles S on CSAH 15.



Date: 8/21/2024