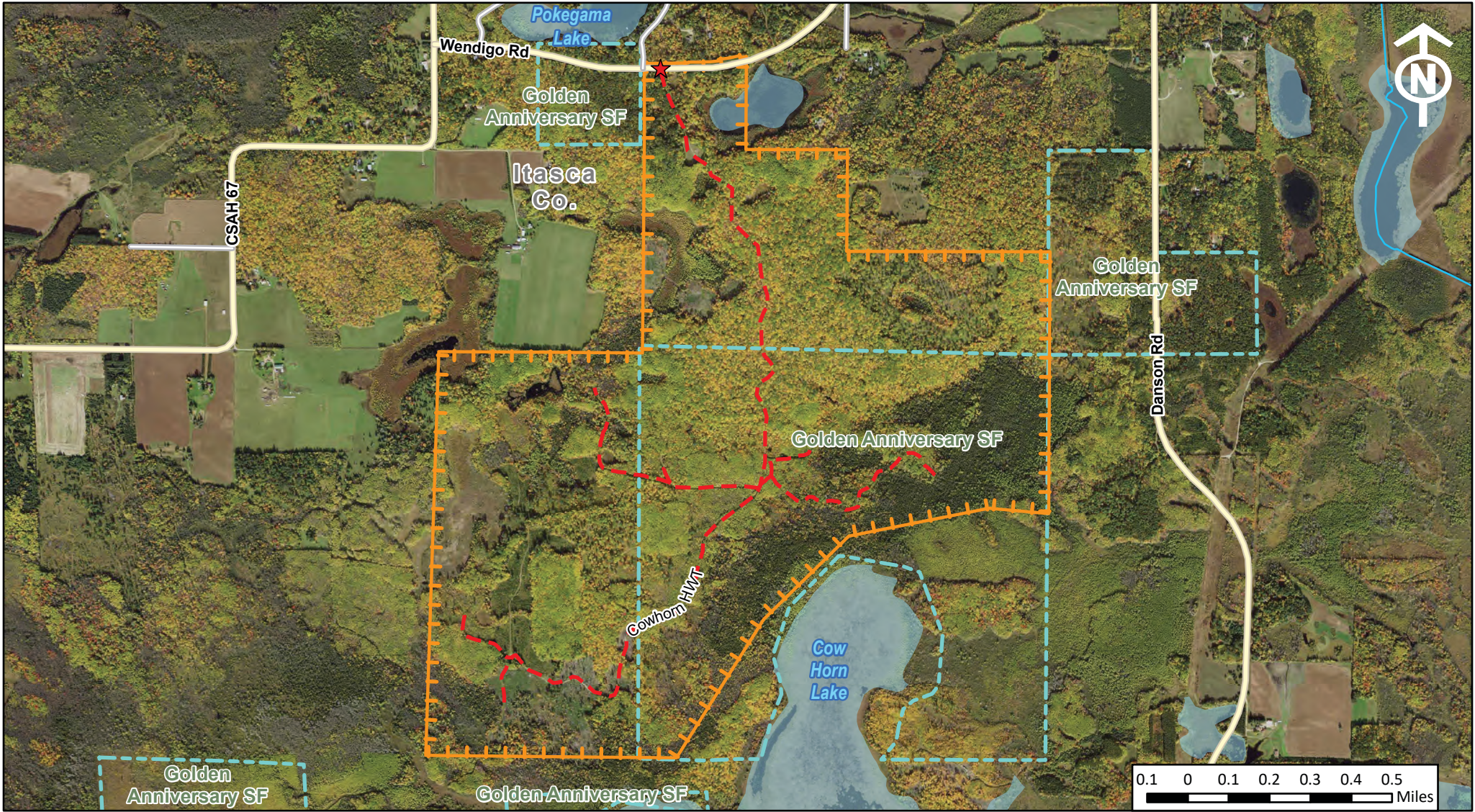


# Cowhorn RGMA



- Ruffed Grouse Management Areas
- State Forest Land
- RGMA Access Points
- County Highway
- Township or Other Road
- Hunter Walking Trails
- Public Water Watercourse
- Public Waters Basins

## User Note:

**Directions:** Approx. 5 miles S of Grand Rapids on Hwy 169, then E onto Hwy 66, approx. 6 miles along south side of Pokagama lake, parking lot on the south side of hwy.



Date: 8/20/2024