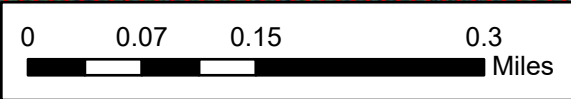
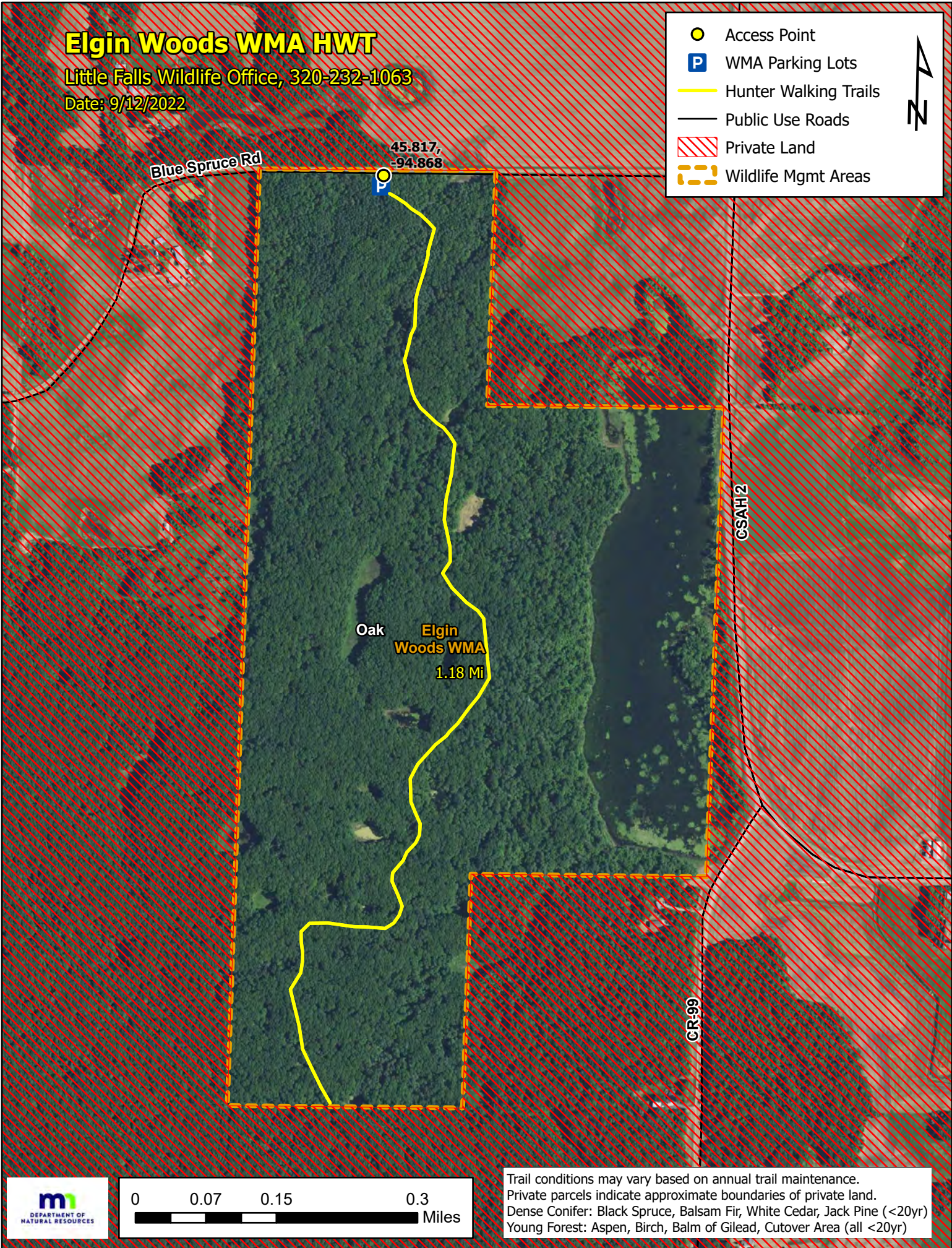


Elgin Woods WMA HWT

Little Falls Wildlife Office, 320-232-1063

Date: 9/12/2022

-  Access Point
-  WMA Parking Lots
-  Hunter Walking Trails
-  Public Use Roads
-  Private Land
-  Wildlife Mgmt Areas



Trail conditions may vary based on annual trail maintenance.
Private parcels indicate approximate boundaries of private land.
Dense Conifer: Black Spruce, Balsam Fir, White Cedar, Jack Pine (<20yr)
Young Forest: Aspen, Birch, Balm of Gilead, Cutover Area (all <20yr)