

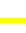



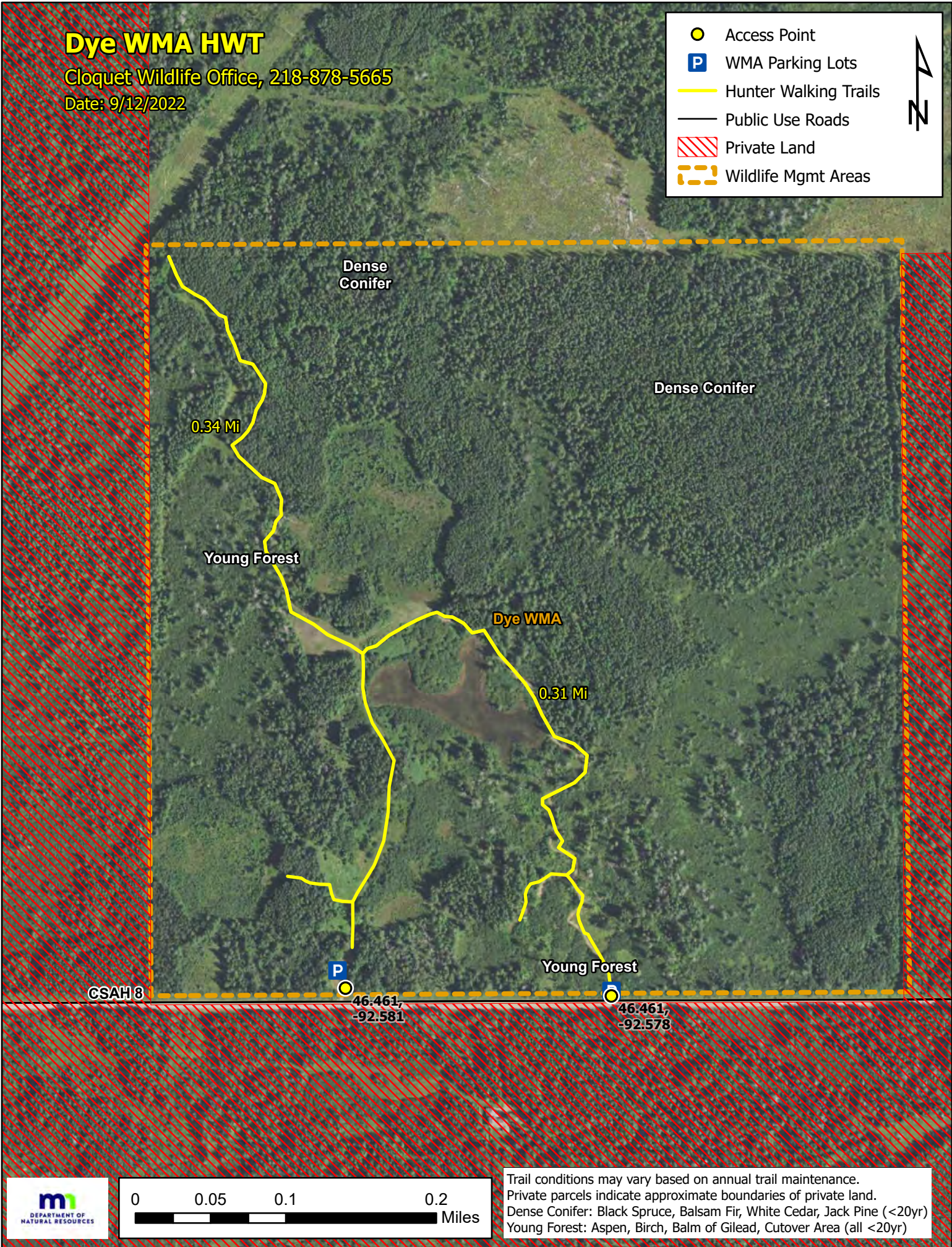



Dye WMA HWT

Cloquet Wildlife Office, 218-878-5665

Date: 9/12/2022

-  Access Point
-  WMA Parking Lots
-  Hunter Walking Trails
-  Public Use Roads
-  Private Land
-  Wildlife Mgmt Areas



CSAH 8

P

46.461,
-92.581

Young Forest

46.461,
-92.578

0.34 Mi

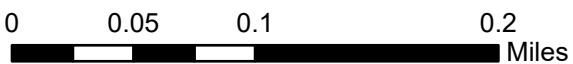
Young Forest

Dense Conifer

Dye WMA

0.31 Mi

Dense Conifer



Trail conditions may vary based on annual trail maintenance.
Private parcels indicate approximate boundaries of private land.
Dense Conifer: Black Spruce, Balsam Fir, White Cedar, Jack Pine (<20yr)
Young Forest: Aspen, Birch, Balm of Gilead, Cutover Area (all <20yr)