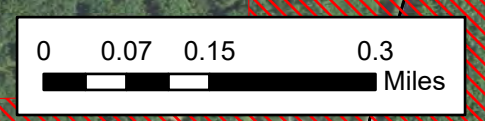
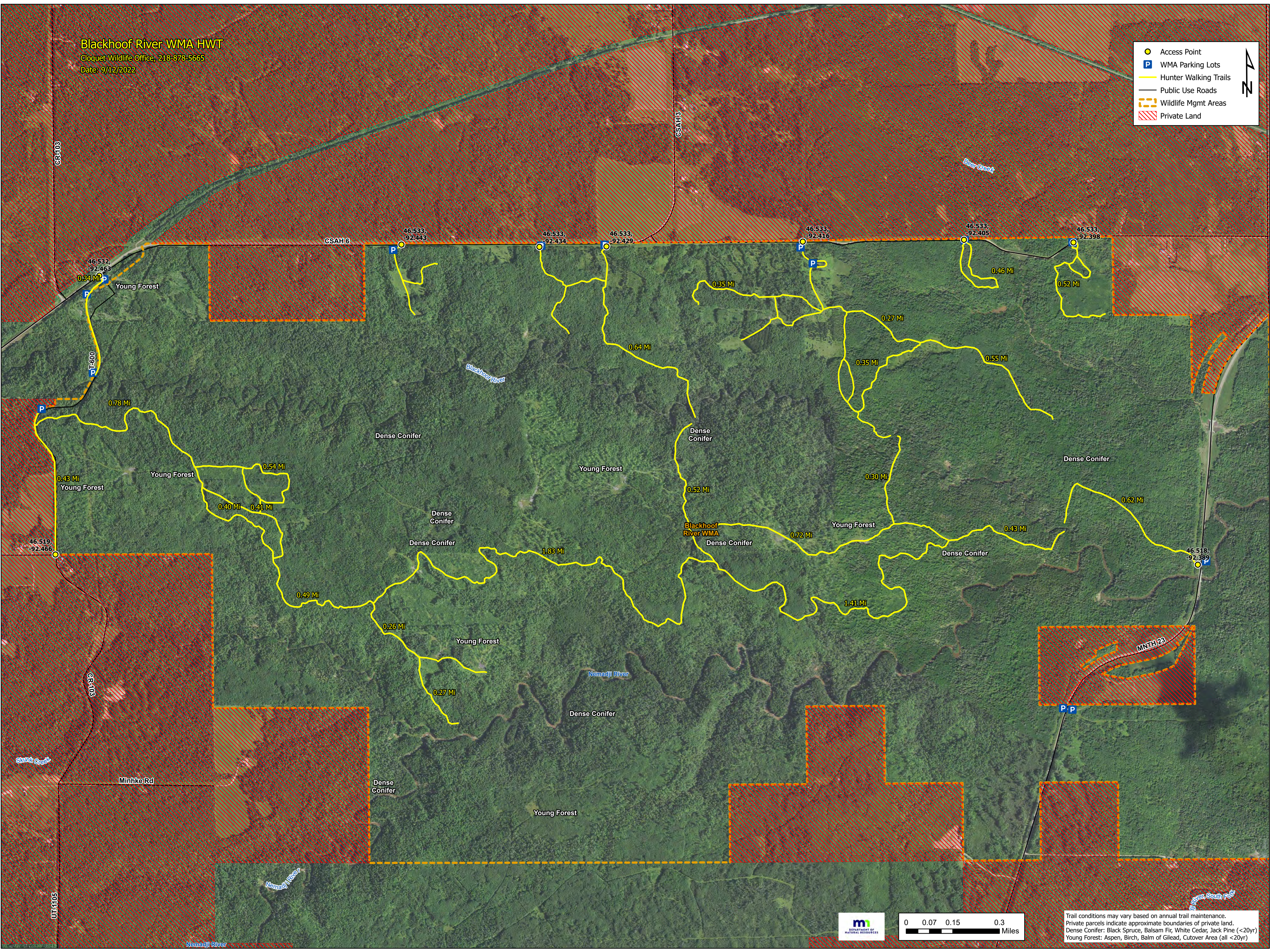


# Blackhoof River WMA HWT

Cloquet Wildlife Office, 218-878-5665

Date: 9/12/2022

- Access Point
- P WMA Parking Lots
- Hunter Walking Trails
- Public Use Roads
- Wildlife Mgmt Areas
- Private Land



Trail conditions may vary based on annual trail maintenance.  
Private parcels indicate approximate boundaries of private land.  
Dense Conifer: Black Spruce, Balsam Fir, White Cedar, Jack Pine (<20yr)  
Young Forest: Aspen, Birch, Balm of Gilead, Cutover Area (all <20yr)