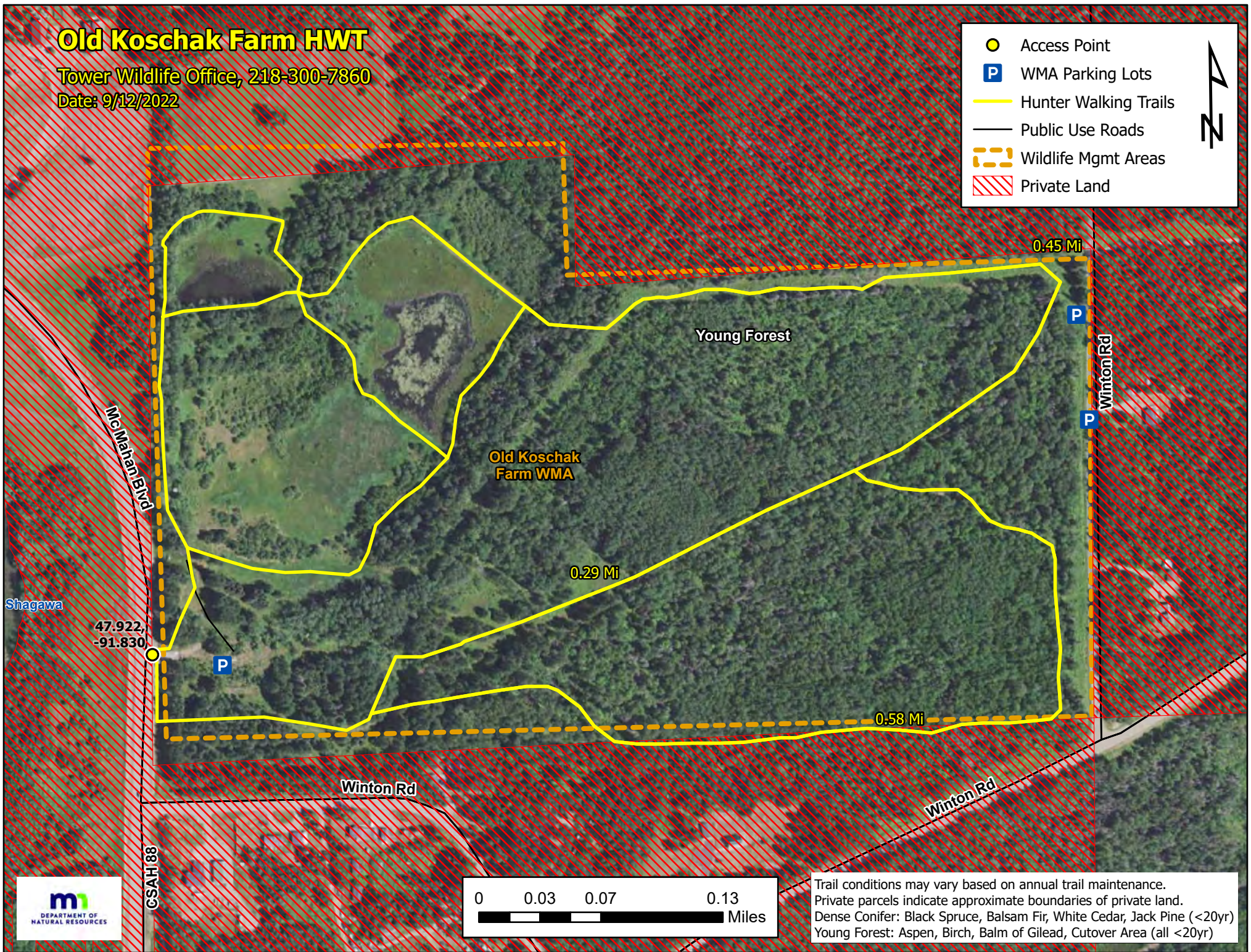


# Old Koschak Farm HWT

Tower Wildlife Office, 218-300-7860

Date: 9/12/2022

- Access Point
- P WMA Parking Lots
- Hunter Walking Trails
- Public Use Roads
- Wildlife Mgmt Areas
- ▨ Private Land



Shagawa

47.922,  
-91.830

P

P

P

Young Forest

Old Koschak  
Farm WMA

0.29 Mi

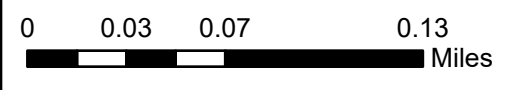
0.45 Mi

0.58 Mi

Winton Rd

Winton Rd

CSAH 88



Trail conditions may vary based on annual trail maintenance.  
Private parcels indicate approximate boundaries of private land.  
Dense Conifer: Black Spruce, Balsam Fir, White Cedar, Jack Pine (<20yr)  
Young Forest: Aspen, Birch, Balm of Gilead, Cutover Area (all <20yr)

