

Anchor Lake HWT

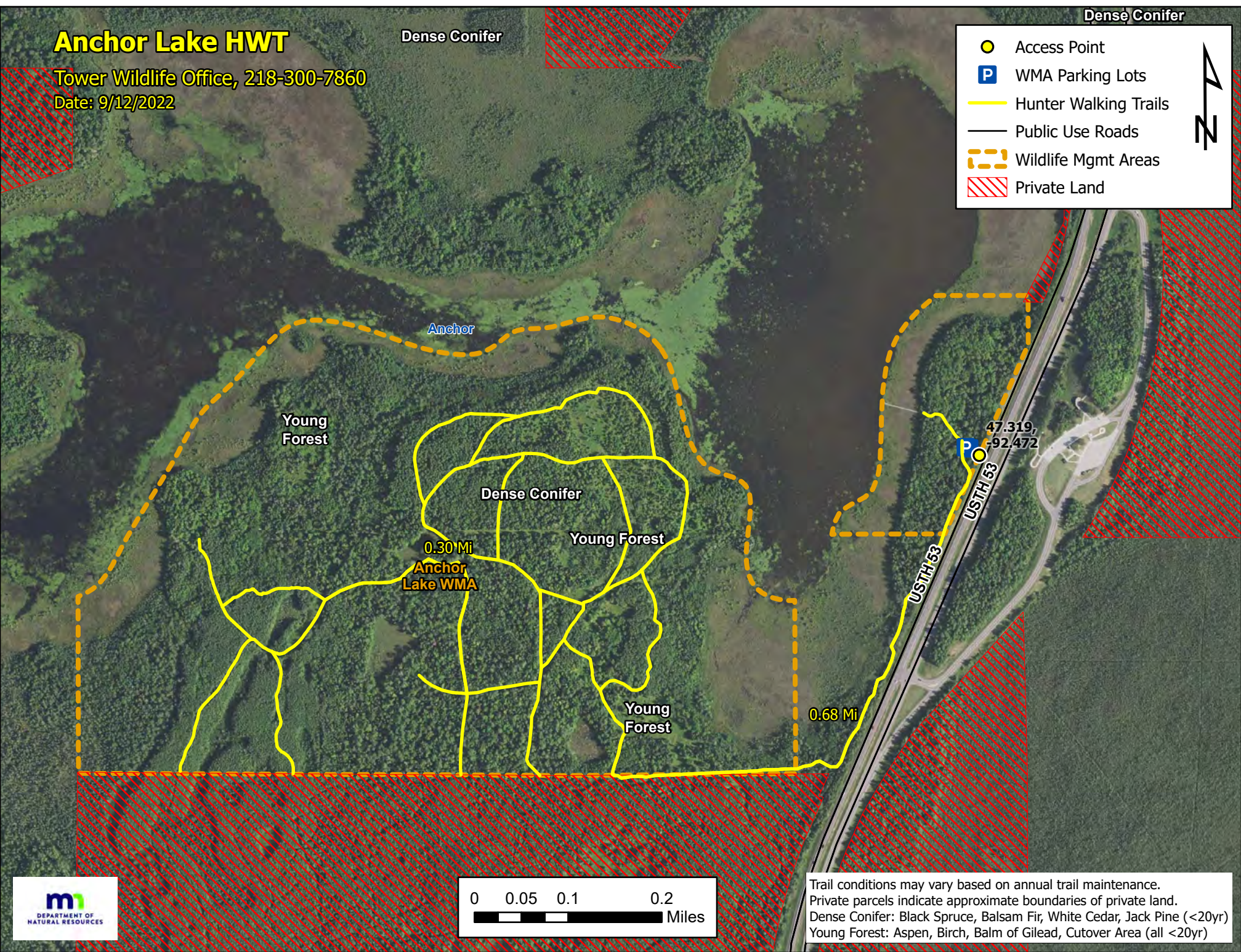
Tower Wildlife Office, 218-300-7860

Date: 9/12/2022

Dense Conifer

Dense Conifer

- Access Point
- P WMA Parking Lots
- Hunter Walking Trails
- Public Use Roads
- - - Wildlife Mgmt Areas
- ▨ Private Land

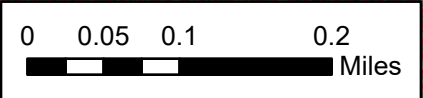


0.30 Mi
Anchor
Lake WMA

47.319,
-92.472

USTH 53
USTH 53

0.68 Mi



Trail conditions may vary based on annual trail maintenance.
Private parcels indicate approximate boundaries of private land.
Dense Conifer: Black Spruce, Balsam Fir, White Cedar, Jack Pine (<20yr)
Young Forest: Aspen, Birch, Balm of Gilead, Cutover Area (all <20yr)

