



Revised May 7, 2013

MINNESOTA

2012 Public Stumpage Price Review and Price Indices

Download from Minnesota DNR – Forestry at URL:

<http://www.dnr.state.mn.us/forestry/timbersales/stumpage.html>

Highlights

In 2012, stumpage sold by public agencies totaled 1.69 million cords with a bid value of \$37.1 million as compared to 2011 with 1.96 million cords sold with a bid value of \$44.0 million, a year-over-year (y/y) volume decrease of 0.27 million cords or 13.7 percent and a y/y revenue decrease of \$6.9 million or 15.7 percent.

Average public stumpage prices received for all-species cord products declined to \$21.57 per cord in 2012 from \$21.88 per cord in 2011, a decrease of 1.4 percent.

In 2012, the public average stumpage price received for aspen was \$25.58 per cord as compared to an average \$25.55 in 2011 (Figure 1).

The public average pine pulp & bolts stumpage price was \$31.23 per cord in 2012 as compared to \$33.33 per cord in 2011, a y/y decrease of 6.3 percent (Figure 2).

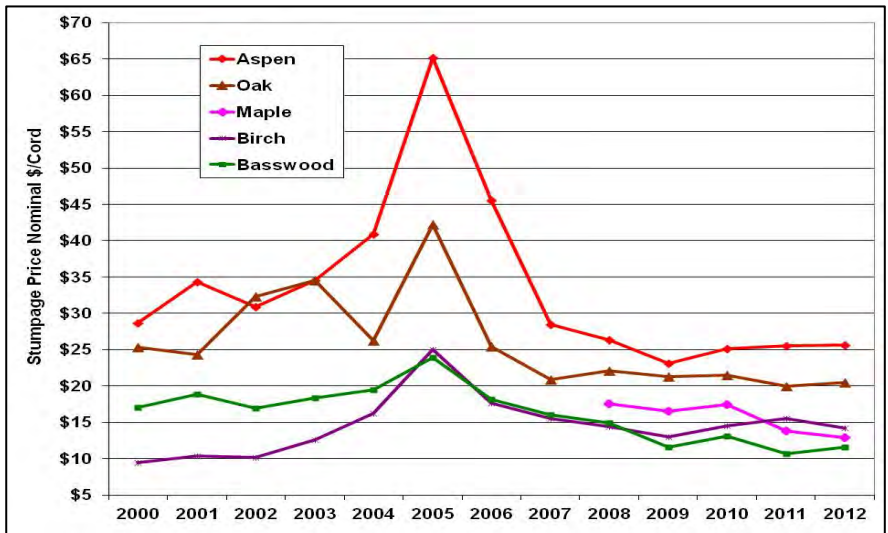


Figure 1. Hardwood pulp & bolts prices, nominal dollars per cord.

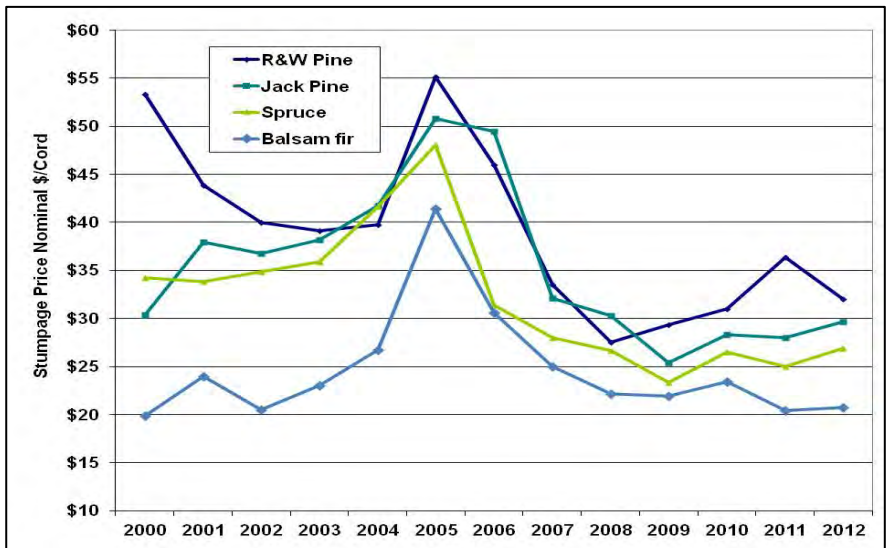


Figure 2. Softwood pulp & bolts prices, nominal dollars per cord.

For information about the Minnesota Stumpage Price Review, contact: Don Deckard, State Forest Economist, Minnesota Department of Natural Resources, Division of Forestry, 500 Lafayette Road - Box 44, St. Paul, Minnesota 55155-4044. Email: donald.deckard@state.mn.us; Office: (651) 259-5287.

Highlights - continued

In 2012, a total 16.1 MMBF of sawtimber was sold by public agencies as compared to 16.4 MMBF sold in 2011, a year-over-year volume decrease of 1.8 percent.

The all-species public average sawtimber stumpage price was \$121.59 per MBF in 2012 as compared to \$145.88 per MBF in 2011, a year-over-year decrease of 16.7 percent (Figure 3).

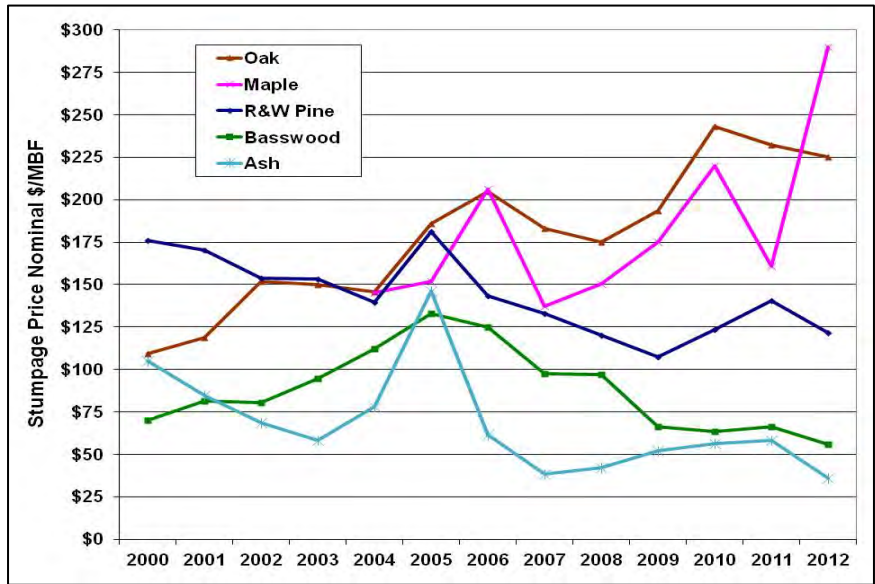


Figure 3. Sawtimber stumpage prices, nominal dollars per mbf.

Stumpage Price Indices

Using the Implicit Price Deflator for Gross Domestic Product (GDP) as baseline inflation (base year 2000=100), the all-agencies all-species Pulpwood Composite Price Index increased from 99.5 in 2011 to 100.2 in 2012, a 0.7 percent increase. The Pulp & Bolts Composite Price Index decreased from 99.4 in 2011 to 93.6 in 2012, a decrease of 5.9 percent. The MBF Composite Price Index decreased from 136.3 in 2011 to 113.6 in 2012, a 16.7 percent decrease (Figure 4).

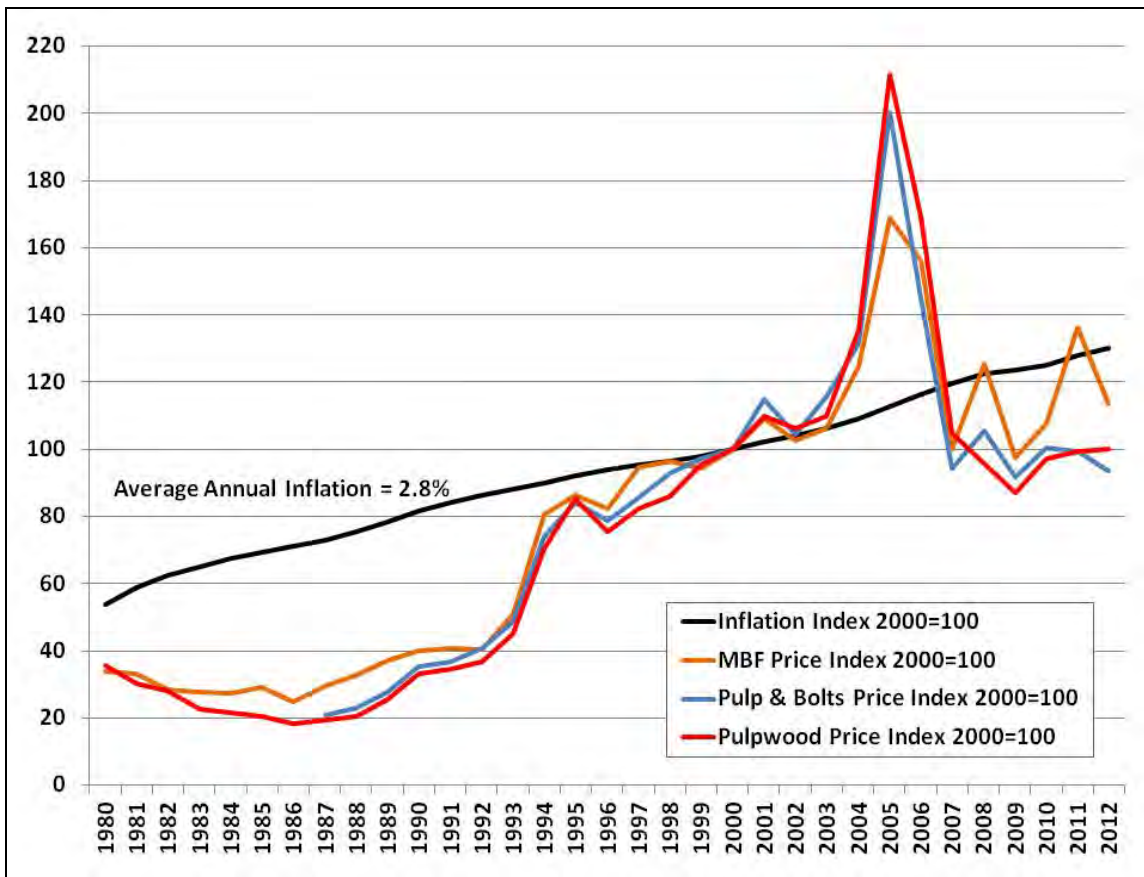


Figure 4. Inflation and Public Stumpage Price Indices, 1980 – 2012.

Methods and Definitions

Methods

This report contains average stumpage prices received by all Minnesota public agencies for the following product classifications: sawtimber, pulp & bolts, pulpwood, fuelwood, and biomass. Information presented may be useful for determining the total volume and value of stumpage sold and for comparing relative volumes and values of stumpage sold during the reporting period by public agencies in Minnesota.

Public agencies have different fiscal years. The reporting period for each agency is included as part of the agencies information. Federal agencies (USFS and BIA) fiscal year runs from October 1 – September 30. The state's (Minnesota DNR) fiscal year runs from July 1 – June 30, but to make the data reported more consistent with the other agencies, the time period for state data included in the report is for **CY2012**. The fiscal year used by the counties is the same as the calendar year. Some agencies report their data based on timber appraisal estimates from timber sales sold, while others report based on actual scale receipts from timber harvested and scaled. The reporting basis for each agency is noted in the report.

DISCLAIMER: The timber sales data includes different products and units of measure by species. Reported volumes and values are adjusted to account for variability in product specifications at the discretion of the state forest economist. The reader should use caution when comparing the prices shown in this report with actual prices received or expected on any specific timber sale. Individual sale prices may vary significantly from the averages shown in this report because of variability in both economic and physical conditions.

Definitions

Average price: volume weighted (mean) total value divided by total volume for each listed species/product group.

Biomass: logging residues including tops, limbs, and cull pieces.

Board foot: a piece of wood 1" thick by 12" long by 12" wide.

Bolt: short length log, in the Lake States usually 100" in length with minimum 6" top diameter. Depending on species and quality, may be suitable for the production of dimensional lumber (2x4s), industrial grade lumber (pallets), for manufacturing turned forest products, or for peeling.

Inflation Index: Base year 2000=100, indexed to general price changes as measured by the Implicit Price Deflator for Gross Domestic Product (GDP) compiled by the U.S. Department of Commerce, Bureau of Economic Analysis.

Cord: unit of cubic volume measure 4-feet wide by 4-feet high by 8-feet in length, or equivalent, containing 128 cubic feet of well stacked roundwood, including bark and air space.

MBF: one thousand board feet; stumpage volume measured using **Scribner** log or tree scale.

MBF Composite Price Index: Base year 2000=100, volume weighted (total all-species MBF value divided by total all-species MBF volume) sawtimber price index.

MMBF: one million board feet; stumpage volume measured using **Scribner** log or tree scale

Pulpwood: stem suitable for fiber used for paper and oriented strand board (OSB) manufacturing.

Pulpwood Composite Price Index: Base year 2000=100, volume weighted (total all-species pulpwood value divided by total all-species pulpwood volume) price index.

Pulp & Bolts: stem containing the mixed products of pulpwood and bolts.

Pulp & Bolts Composite Price Index: Base year 2000=100, volume weighted (total all-species pulp & bolts value divided by total all-species pulp & bolts volume) price index.

Sawtimber: stem suitable for production of graded boards and/or dimension lumber.

Stumpage: value paid to a landowner to harvest standing timber.

2012 SUMMARY TABLE – ALL MINNESOTA PUBLIC AGENCIES

All Agencies Reporting Period: 2012

Reporting Basis: Variable

<u>Species Name</u>	<u>Sawtimber</u>		<u>Pulp and Bolts</u>		<u>Pulpwood</u>		<u>Fuelwood</u>		<u>Biomass</u>	
	<u>MBF</u>	<u>Avg Price</u>	<u>Cords</u>	<u>Avg Price</u>	<u>Cords</u>	<u>Avg Price</u>	<u>Cords</u>	<u>Avg Price</u>	<u>Tons</u>	<u>Avg Price</u>
Aspen	51.0	\$53.48	0.0	\$0.00	816,708.2	\$25.58	46.0	\$2.30	2,550.5	\$1.00
Balm of Gilead	0.0	\$0.00	0.0	\$0.00	9,530.0	\$22.77	0.0	\$0.00	0.0	\$0.00
Birch Species	1.9	\$35.70	36,016.5	\$14.24	71,608.2	\$9.31	171.2	\$4.54	242.1	\$1.00
Ash Species	148.2	\$36.12	7,654.0	\$18.39	17,028.1	\$6.26	1,011.3	\$5.61	0.0	\$0.00
Elm Species	13.1	\$42.45	0.0	\$0.00	37.6	\$5.31	1.0	\$8.00	0.0	\$0.00
Oak Species	1,500.4	\$225.36	39,967.4	\$20.45	5,556.6	\$11.69	689.6	\$9.29	0.0	\$0.00
Basswood	354.3	\$55.87	10,884.4	\$11.58	6,105.0	\$6.61	0.0	\$0.00	0.0	\$0.00
Other Hdwds	1,355.4	\$36.88	16,424.0	\$17.30	41,851.0	\$10.24	2,808.4	\$4.67	82.5	\$1.00
Balsam Fir	0.0	\$0.00	45,191.0	\$20.78	52,064.5	\$14.19	35.0	\$1.57	0.0	\$0.00
White Spruce	259.0	\$83.12	24,615.5	\$24.00	12,494.3	\$15.12	0.0	\$0.00	0.0	\$0.00
Black Spruce	0.0	\$0.00	41,711.2	\$26.91	80,982.9	\$17.77	0.0	\$0.00	0.0	\$0.00
Tamarack	0.0	\$0.00	397.0	\$16.57	42,906.2	\$6.20	844.0	\$2.55	0.0	\$0.00
White Cedar	0.0	\$0.00	0.0	\$0.00	2,633.0	\$5.12	0.0	\$0.00	0.0	\$0.00
Jack Pine	520.0	\$138.95	44,915.0	\$29.84	17,974.1	\$16.03	810.0	\$2.70	70.0	\$1.00
Red Pine	11,545.9	\$121.49	94,157.5	\$32.01	13,211.9	\$10.27	0.0	\$0.00	0.0	\$0.00
White Pine	272.9	\$106.66	3,042.0	\$27.51	1,602.8	\$10.81	0.0	\$0.00	0.0	\$0.00
Maple Species	34.0	\$292.13	13,859.0	\$12.94	46,814.1	\$8.18	10.0	\$4.00	209.0	\$1.00
Mixed Species	0.0	\$0.00	0.0	\$0.00	0.0	\$0.00	2,473.0	\$5.57	70,370.0	\$0.87
All Agencies Grand Totals	16,056.1	\$121.59	378,834.5	\$24.17	1,239,108.5	\$20.89	8,899.5	\$4.98	73,524.1	\$0.88

The Public Stumpage Price Review is compiled by the Division of Forestry in cooperation with all other public land management agencies in Minnesota. Distribution is 100 percent electronic and is available for download from the DNR website along with reports from previous years.

2012 MINNESOTA COUNTIES

Aitkin Co.		Reporting Period: 01/12 to 12/12				Reporting Basis: Appraisal Reports					
<u>Species Name</u>	Sawtimber		Pulp and Bolts		Pulpwood		Fuelwood		Biomass		
	<u>MBF</u>	<u>Avg Price</u>	<u>Cords</u>	<u>Avg Price</u>	<u>Cords</u>	<u>Avg Price</u>	<u>Cords</u>	<u>Avg Price</u>	<u>Tons</u>	<u>Avg Price</u>	
Aspen	48.2	\$54.05	0.0	\$0.00	23,407.6	\$27.02	0.0	\$0.00	0.0	\$0.00	
Balm of Gilead	0.0	\$0.00	0.0	\$0.00	0.0	\$0.00	0.0	\$0.00	0.0	\$0.00	
Birch Species	0.0	\$0.00	470.0	\$14.46	3,303.1	\$12.99	0.0	\$0.00	0.0	\$0.00	
Ash Species	123.1	\$34.10	0.0	\$0.00	960.9	\$12.21	148.0	\$8.07	0.0	\$0.00	
Elm Species	0.0	\$0.00	0.0	\$0.00	0.0	\$0.00	1.0	\$8.00	0.0	\$0.00	
Oak Species	398.3	\$91.46	2,173.4	\$22.13	0.0	\$0.00	452.0	\$11.30	0.0	\$0.00	
Basswood	275.4	\$49.04	1,105.2	\$11.41	0.0	\$0.00	0.0	\$0.00	0.0	\$0.00	
Other Hdwds	83.1	\$28.26	0.0	\$0.00	4,953.8	\$9.58	440.0	\$9.36	0.0	\$0.00	
Balsam Fir	0.0	\$0.00	767.0	\$21.44	0.0	\$0.00	0.0	\$0.00	0.0	\$0.00	
White Spruce	0.0	\$0.00	267.0	\$24.65	0.0	\$0.00	0.0	\$0.00	0.0	\$0.00	
Black Spruce	0.0	\$0.00	0.0	\$0.00	0.0	\$0.00	0.0	\$0.00	0.0	\$0.00	
Tamarack	0.0	\$0.00	0.0	\$0.00	793.0	\$6.00	0.0	\$0.00	0.0	\$0.00	
White Cedar	0.0	\$0.00	0.0	\$0.00	1.0	\$10.00	0.0	\$0.00	0.0	\$0.00	
Jack Pine	0.0	\$0.00	0.0	\$0.00	0.0	\$0.00	0.0	\$0.00	0.0	\$0.00	
Red Pine	0.0	\$0.00	1,088.0	\$27.22	0.0	\$0.00	0.0	\$0.00	0.0	\$0.00	
White Pine	0.0	\$0.00	54.0	\$19.63	0.0	\$0.00	0.0	\$0.00	0.0	\$0.00	
Maple Species	0.0	\$0.00	108.0	\$24.33	6,574.1	\$11.01	0.0	\$0.00	0.0	\$0.00	
Mixed Species	0.0	\$0.00	0.0	\$0.00	0.0	\$0.00	0.0	\$0.00	0.0	\$0.00	
Aitkin Co.	All Species	928.1	\$63.66	6,032.6	\$20.53	39,993.5	\$20.30	1,041.0	\$10.02	0.0	\$0.00

Becker Co. Reporting Period: 01/12 to 12/12**Reporting Basis: Appraisal Reports**

<u>Species Name</u>	<u>Sawtimber</u>		<u>Pulp and Bolts</u>		<u>Pulpwood</u>		<u>Fuelwood</u>		<u>Biomass</u>	
	<u>MBF</u>	<u>Avg Price</u>	<u>Cords</u>	<u>Avg Price</u>	<u>Cords</u>	<u>Avg Price</u>	<u>Cords</u>	<u>Avg Price</u>	<u>Tons</u>	<u>Avg Price</u>
Aspen	0.0	\$0.00	0.0	\$0.00	9,772.0	\$29.41	0.0	\$0.00	0.0	\$0.00
Balm of Gilead	0.0	\$0.00	0.0	\$0.00	32.0	\$14.00	0.0	\$0.00	0.0	\$0.00
Birch Species	0.0	\$0.00	1,412.0	\$10.63	0.0	\$0.00	0.0	\$0.00	0.0	\$0.00
Ash Species	0.0	\$0.00	0.0	\$0.00	0.0	\$0.00	0.0	\$0.00	0.0	\$0.00
Elm Species	0.0	\$0.00	0.0	\$0.00	0.0	\$0.00	0.0	\$0.00	0.0	\$0.00
Oak Species	0.0	\$0.00	133.0	\$13.57	0.0	\$0.00	0.0	\$0.00	0.0	\$0.00
Basswood	0.0	\$0.00	0.0	\$0.00	5.0	\$5.80	0.0	\$0.00	0.0	\$0.00
Other Hdwds	0.0	\$0.00	0.0	\$0.00	0.0	\$0.00	47.0	\$11.85	0.0	\$0.00
Balsam Fir	0.0	\$0.00	0.0	\$0.00	220.0	\$15.40	0.0	\$0.00	0.0	\$0.00
White Spruce	0.0	\$0.00	0.0	\$0.00	134.0	\$12.86	0.0	\$0.00	0.0	\$0.00
Black Spruce	0.0	\$0.00	0.0	\$0.00	0.0	\$0.00	0.0	\$0.00	0.0	\$0.00
Tamarack	0.0	\$0.00	0.0	\$0.00	0.0	\$0.00	0.0	\$0.00	0.0	\$0.00
White Cedar	0.0	\$0.00	0.0	\$0.00	0.0	\$0.00	0.0	\$0.00	0.0	\$0.00
Jack Pine	0.0	\$0.00	1,259.0	\$21.00	0.0	\$0.00	0.0	\$0.00	0.0	\$0.00
Red Pine	15.0	\$107.13	275.0	\$31.51	10.0	\$12.80	0.0	\$0.00	0.0	\$0.00
White Pine	0.0	\$0.00	0.0	\$0.00	134.0	\$12.86	0.0	\$0.00	0.0	\$0.00
Maple Species	0.0	\$0.00	0.0	\$0.00	40.0	\$8.50	0.0	\$0.00	0.0	\$0.00
Mixed Species	0.0	\$0.00	0.0	\$0.00	0.0	\$0.00	0.0	\$0.00	0.0	\$0.00
Becker Co. All Species	15.0	\$107.13	3,079.0	\$16.86	10,347.0	\$28.53	47.0	\$11.85	0.0	\$0.00

Beltrami Co. Reporting Period: 01/12 to 12/12**Reporting Basis: Appraisal Reports**

<u>Species Name</u>	Sawtimber		Pulp and Bolts		Pulpwood		Fuelwood		Biomass	
	<u>MBF</u>	<u>Avg Price</u>	<u>Cords</u>	<u>Avg Price</u>	<u>Cords</u>	<u>Avg Price</u>	<u>Cords</u>	<u>Avg Price</u>	<u>Tons</u>	<u>Avg Price</u>
Aspen	0.0	\$0.00	0.0	\$0.00	15,709.0	\$30.55	0.0	\$0.00	0.0	\$0.00
Balm of Gilead	0.0	\$0.00	0.0	\$0.00	1,201.0	\$31.42	0.0	\$0.00	0.0	\$0.00
Birch Species	0.0	\$0.00	3,287.0	\$15.75	0.0	\$0.00	0.0	\$0.00	0.0	\$0.00
Ash Species	0.0	\$0.00	0.0	\$0.00	0.0	\$0.00	0.0	\$0.00	0.0	\$0.00
Elm Species	0.0	\$0.00	0.0	\$0.00	0.0	\$0.00	0.0	\$0.00	0.0	\$0.00
Oak Species	0.0	\$0.00	0.0	\$0.00	0.0	\$0.00	0.0	\$0.00	0.0	\$0.00
Basswood	0.0	\$0.00	0.0	\$0.00	0.0	\$0.00	0.0	\$0.00	0.0	\$0.00
Other Hdwds	0.0	\$0.00	4,379.0	\$16.82	0.0	\$0.00	410.0	\$2.00	0.0	\$0.00
Balsam Fir	0.0	\$0.00	2,289.0	\$20.05	0.0	\$0.00	0.0	\$0.00	0.0	\$0.00
White Spruce	0.0	\$0.00	0.0	\$0.00	0.0	\$0.00	0.0	\$0.00	0.0	\$0.00
Black Spruce	0.0	\$0.00	0.0	\$0.00	605.0	\$21.91	0.0	\$0.00	0.0	\$0.00
Tamarack	0.0	\$0.00	0.0	\$0.00	0.0	\$0.00	0.0	\$0.00	0.0	\$0.00
White Cedar	0.0	\$0.00	0.0	\$0.00	0.0	\$0.00	0.0	\$0.00	0.0	\$0.00
Jack Pine	0.0	\$0.00	3,362.0	\$30.98	0.0	\$0.00	0.0	\$0.00	0.0	\$0.00
Red Pine	49.2	\$170.02	4,143.0	\$30.41	0.0	\$0.00	0.0	\$0.00	0.0	\$0.00
White Pine	0.0	\$0.00	0.0	\$0.00	0.0	\$0.00	0.0	\$0.00	0.0	\$0.00
Maple Species	0.0	\$0.00	0.0	\$0.00	0.0	\$0.00	0.0	\$0.00	0.0	\$0.00
Mixed Species	0.0	\$0.00	0.0	\$0.00	0.0	\$0.00	0.0	\$0.00	0.0	\$0.00
Beltrami Co. All Species	49.2	\$170.02	17,460.0	\$22.99	17,515.0	\$30.31	410.0	\$2.00	0.0	\$0.00

Carlton Co. Reporting Period: 01/12 to 12/12

Reporting Basis: Appraisal Reports

<u>Species Name</u>	Sawtimber		Pulp and Bolts		Pulpwood		Fuelwood		Biomass	
	<u>MBF</u>	<u>Avg Price</u>	<u>Cords</u>	<u>Avg Price</u>	<u>Cords</u>	<u>Avg Price</u>	<u>Cords</u>	<u>Avg Price</u>	<u>Tons</u>	<u>Avg Price</u>
Aspen	0.0	\$0.00	0.0	\$0.00	10,610.0	\$22.09	0.0	\$0.00	0.0	\$0.00
Balm of Gilead	0.0	\$0.00	0.0	\$0.00	0.0	\$0.00	0.0	\$0.00	0.0	\$0.00
Birch Species	0.0	\$0.00	0.0	\$0.00	434.0	\$10.00	0.0	\$0.00	0.0	\$0.00
Ash Species	0.0	\$0.00	0.0	\$0.00	102.0	\$10.00	0.0	\$0.00	0.0	\$0.00
Elm Species	0.0	\$0.00	0.0	\$0.00	0.0	\$0.00	0.0	\$0.00	0.0	\$0.00
Oak Species	0.0	\$0.00	0.0	\$0.00	0.0	\$0.00	0.0	\$0.00	0.0	\$0.00
Basswood	0.0	\$0.00	0.0	\$0.00	0.0	\$0.00	0.0	\$0.00	0.0	\$0.00
Other Hdwds	0.0	\$0.00	0.0	\$0.00	2,598.0	\$9.96	0.0	\$0.00	0.0	\$0.00
Balsam Fir	0.0	\$0.00	0.0	\$0.00	587.0	\$14.98	0.0	\$0.00	0.0	\$0.00
White Spruce	0.0	\$0.00	0.0	\$0.00	20.0	\$10.70	0.0	\$0.00	0.0	\$0.00
Black Spruce	0.0	\$0.00	0.0	\$0.00	1,010.0	\$15.00	0.0	\$0.00	0.0	\$0.00
Tamarack	0.0	\$0.00	0.0	\$0.00	160.0	\$5.00	0.0	\$0.00	0.0	\$0.00
White Cedar	0.0	\$0.00	0.0	\$0.00	0.0	\$0.00	0.0	\$0.00	0.0	\$0.00
Jack Pine	0.0	\$0.00	0.0	\$0.00	0.0	\$0.00	0.0	\$0.00	0.0	\$0.00
Red Pine	0.0	\$0.00	1,584.0	\$18.17	29.0	\$7.52	0.0	\$0.00	0.0	\$0.00
White Pine	0.0	\$0.00	0.0	\$0.00	0.0	\$0.00	0.0	\$0.00	0.0	\$0.00
Maple Species	0.0	\$0.00	0.0	\$0.00	30.0	\$10.00	0.0	\$0.00	0.0	\$0.00
Mixed Species	0.0	\$0.00	0.0	\$0.00	0.0	\$0.00	0.0	\$0.00	696.0	\$4.50
Carlton Co. All Species	0.0	\$0.00	1,584.0	\$18.17	15,580.0	\$18.68	0.0	\$0.00	696.0	\$4.50

Cass Co. Reporting Period: 01/12 to 12/12**Reporting Basis: Appraisal Reports**

<u>Species Name</u>	<u>Sawtimber</u>		<u>Pulp and Bolts</u>		<u>Pulpwood</u>		<u>Fuelwood</u>		<u>Biomass</u>	
	<u>MBF</u>	<u>Avg Price</u>	<u>Cords</u>	<u>Avg Price</u>	<u>Cords</u>	<u>Avg Price</u>	<u>Cords</u>	<u>Avg Price</u>	<u>Tons</u>	<u>Avg Price</u>
Aspen	0.0	\$0.00	0.0	\$0.00	31,021.0	\$25.32	0.0	\$0.00	0.0	\$0.00
Balm of Gilead	0.0	\$0.00	0.0	\$0.00	456.0	\$19.86	0.0	\$0.00	0.0	\$0.00
Birch Species	0.0	\$0.00	9,733.5	\$17.45	0.0	\$0.00	0.0	\$0.00	0.0	\$0.00
Ash Species	0.0	\$0.00	689.0	\$22.40	0.0	\$0.00	0.0	\$0.00	0.0	\$0.00
Elm Species	0.0	\$0.00	0.0	\$0.00	0.0	\$0.00	0.0	\$0.00	0.0	\$0.00
Oak Species	0.0	\$0.00	13,373.0	\$24.57	0.0	\$0.00	0.0	\$0.00	0.0	\$0.00
Basswood	0.0	\$0.00	3,150.0	\$12.67	0.0	\$0.00	0.0	\$0.00	0.0	\$0.00
Other Hdwds	0.0	\$0.00	0.0	\$0.00	0.0	\$0.00	0.0	\$0.00	0.0	\$0.00
Balsam Fir	0.0	\$0.00	1,891.0	\$21.53	0.0	\$0.00	0.0	\$0.00	0.0	\$0.00
White Spruce	0.0	\$0.00	212.0	\$33.99	0.0	\$0.00	0.0	\$0.00	0.0	\$0.00
Black Spruce	0.0	\$0.00	0.0	\$0.00	382.0	\$20.23	0.0	\$0.00	0.0	\$0.00
Tamarack	0.0	\$0.00	0.0	\$0.00	2,845.0	\$5.60	0.0	\$0.00	0.0	\$0.00
White Cedar	0.0	\$0.00	0.0	\$0.00	0.0	\$0.00	0.0	\$0.00	0.0	\$0.00
Jack Pine	0.0	\$0.00	2,129.0	\$27.70	0.0	\$0.00	0.0	\$0.00	0.0	\$0.00
Red Pine	314.4	\$130.35	1,807.0	\$49.96	112.0	\$16.04	0.0	\$0.00	0.0	\$0.00
White Pine	93.5	\$138.37	0.0	\$0.00	20.0	\$15.85	0.0	\$0.00	0.0	\$0.00
Maple Species	0.0	\$0.00	6,020.0	\$14.23	0.0	\$0.00	0.0	\$0.00	0.0	\$0.00
Mixed Species	0.0	\$0.00	0.0	\$0.00	0.0	\$0.00	500.0	\$2.50	0.0	\$0.00
Cass Co. All Species	407.9	\$132.19	39,004.5	\$21.45	34,836.0	\$23.55	500.0	\$2.50	0.0	\$0.00

Clearwater Co. Reporting Period: 01/12 to 12/12

Reporting Basis: Appraisal Reports

<u>Species Name</u>	Sawtimber		Pulp and Bolts		Pulpwood		Fuelwood		Biomass	
	<u>MBF</u>	<u>Avg Price</u>	<u>Cords</u>	<u>Avg Price</u>	<u>Cords</u>	<u>Avg Price</u>	<u>Cords</u>	<u>Avg Price</u>	<u>Tons</u>	<u>Avg Price</u>
Aspen	0.0	\$0.00	0.0	\$0.00	14,738.0	\$27.73	0.0	\$0.00	0.0	\$0.00
Balm of Gilead	0.0	\$0.00	0.0	\$0.00	188.0	\$11.79	0.0	\$0.00	0.0	\$0.00
Birch Species	0.0	\$0.00	0.0	\$0.00	2,121.0	\$10.70	0.0	\$0.00	0.0	\$0.00
Ash Species	0.0	\$0.00	0.0	\$0.00	240.0	\$6.32	0.0	\$0.00	0.0	\$0.00
Elm Species	0.0	\$0.00	0.0	\$0.00	0.0	\$0.00	0.0	\$0.00	0.0	\$0.00
Oak Species	58.8	\$51.16	1,798.0	\$19.84	791.0	\$16.48	0.0	\$0.00	0.0	\$0.00
Basswood	30.4	\$30.00	0.0	\$0.00	1,969.0	\$6.40	0.0	\$0.00	0.0	\$0.00
Other Hdwds	0.0	\$0.00	0.0	\$0.00	0.0	\$0.00	0.0	\$0.00	0.0	\$0.00
Balsam Fir	0.0	\$0.00	0.0	\$0.00	1,065.0	\$12.41	0.0	\$0.00	0.0	\$0.00
White Spruce	0.0	\$0.00	0.0	\$0.00	589.0	\$14.50	0.0	\$0.00	0.0	\$0.00
Black Spruce	0.0	\$0.00	0.0	\$0.00	0.0	\$0.00	0.0	\$0.00	0.0	\$0.00
Tamarack	0.0	\$0.00	0.0	\$0.00	0.0	\$0.00	0.0	\$0.00	0.0	\$0.00
White Cedar	0.0	\$0.00	0.0	\$0.00	0.0	\$0.00	0.0	\$0.00	0.0	\$0.00
Jack Pine	0.0	\$0.00	0.0	\$0.00	626.0	\$15.35	0.0	\$0.00	0.0	\$0.00
Red Pine	95.8	\$151.87	0.0	\$0.00	1,278.0	\$19.19	0.0	\$0.00	0.0	\$0.00
White Pine	13.6	\$80.51	0.0	\$0.00	92.0	\$12.29	0.0	\$0.00	0.0	\$0.00
Maple Species	0.0	\$0.00	0.0	\$0.00	1,855.0	\$10.86	0.0	\$0.00	0.0	\$0.00
Mixed Species	0.0	\$0.00	0.0	\$0.00	0.0	\$0.00	0.0	\$0.00	0.0	\$0.00
Clearwater Co. All Species	198.6	\$98.51	1,798.0	\$19.84	25,552.0	\$21.05	0.0	\$0.00	0.0	\$0.00

Crow Wing Co. Reporting Period: 01/12 to 12/12

Reporting Basis: Appraisal Reports

<u>Species Name</u>	Sawtimber		Pulp and Bolts		Pulpwood		Fuelwood		Biomass	
	<u>MBF</u>	<u>Avg Price</u>	<u>Cords</u>	<u>Avg Price</u>	<u>Cords</u>	<u>Avg Price</u>	<u>Cords</u>	<u>Avg Price</u>	<u>Tons</u>	<u>Avg Price</u>
Aspen	0.0	\$0.00	0.0	\$0.00	13,877.0	\$31.52	0.0	\$0.00	0.0	\$0.00
Balm of Gilead	0.0	\$0.00	0.0	\$0.00	0.0	\$0.00	0.0	\$0.00	0.0	\$0.00
Birch Species	0.0	\$0.00	2,241.0	\$12.01	0.0	\$0.00	0.0	\$0.00	0.0	\$0.00
Ash Species	0.0	\$0.00	440.0	\$12.83	0.0	\$0.00	0.0	\$0.00	0.0	\$0.00
Elm Species	0.0	\$0.00	0.0	\$0.00	0.0	\$0.00	0.0	\$0.00	0.0	\$0.00
Oak Species	0.0	\$0.00	4,252.0	\$15.54	0.0	\$0.00	0.0	\$0.00	0.0	\$0.00
Basswood	0.0	\$0.00	1,343.0	\$14.52	0.0	\$0.00	0.0	\$0.00	0.0	\$0.00
Other Hdwds	0.0	\$0.00	0.0	\$0.00	0.0	\$0.00	0.0	\$0.00	0.0	\$0.00
Balsam Fir	0.0	\$0.00	89.0	\$22.00	0.0	\$0.00	0.0	\$0.00	0.0	\$0.00
White Spruce	0.0	\$0.00	0.0	\$0.00	0.0	\$0.00	0.0	\$0.00	0.0	\$0.00
Black Spruce	0.0	\$0.00	0.0	\$0.00	210.0	\$7.00	0.0	\$0.00	0.0	\$0.00
Tamarack	0.0	\$0.00	0.0	\$0.00	1,430.0	\$7.00	0.0	\$0.00	0.0	\$0.00
White Cedar	0.0	\$0.00	0.0	\$0.00	0.0	\$0.00	0.0	\$0.00	0.0	\$0.00
Jack Pine	0.0	\$0.00	537.0	\$40.93	0.0	\$0.00	0.0	\$0.00	70.0	\$1.00
Red Pine	291.3	\$128.28	781.0	\$19.69	10.0	\$10.00	0.0	\$0.00	0.0	\$0.00
White Pine	0.0	\$0.00	0.0	\$0.00	0.0	\$0.00	0.0	\$0.00	0.0	\$0.00
Maple Species	0.0	\$0.00	0.0	\$0.00	2,576.0	\$11.88	0.0	\$0.00	0.0	\$0.00
Mixed Species	0.0	\$0.00	0.0	\$0.00	0.0	\$0.00	215.0	\$4.02	3,487.0	\$1.00
Crow Wing Co. All Species	291.3	\$128.28	9,683.0	\$16.26	18,103.0	\$26.50	215.0	\$4.02	3,557.0	\$1.00

Hubbard Co. Reporting Period: 01/12 to 12/12

Reporting Basis: Appraisal Reports

Species Name	Sawtimber		Pulp and Bolts		Pulpwood		Fuelwood		Biomass	
	MBF	Avg Price	Cords	Avg Price	Cords	Avg Price	Cords	Avg Price	Tons	Avg Price
Aspen	0.0	\$0.00	0.0	\$0.00	36,598.0	\$29.01	0.0	\$0.00	0.0	\$0.00
Balm of Gilead	0.0	\$0.00	0.0	\$0.00	170.0	\$10.82	0.0	\$0.00	0.0	\$0.00
Birch Species	0.0	\$0.00	1,525.0	\$12.23	3,491.0	\$10.93	0.0	\$0.00	0.0	\$0.00
Ash Species	0.0	\$0.00	0.0	\$0.00	67.0	\$4.40	0.0	\$0.00	0.0	\$0.00
Elm Species	0.0	\$0.00	0.0	\$0.00	0.0	\$0.00	0.0	\$0.00	0.0	\$0.00
Oak Species	0.0	\$0.00	775.0	\$19.95	1,147.0	\$16.41	0.0	\$0.00	0.0	\$0.00
Basswood	0.0	\$0.00	836.0	\$14.14	690.0	\$11.52	0.0	\$0.00	0.0	\$0.00
Other Hdwds	0.0	\$0.00	0.0	\$0.00	675.0	\$10.78	0.0	\$0.00	0.0	\$0.00
Balsam Fir	0.0	\$0.00	2,307.0	\$19.29	0.0	\$0.00	0.0	\$0.00	0.0	\$0.00
White Spruce	83.9	\$98.19	548.0	\$26.63	167.0	\$15.92	0.0	\$0.00	0.0	\$0.00
Black Spruce	0.0	\$0.00	0.0	\$0.00	360.0	\$10.14	0.0	\$0.00	0.0	\$0.00
Tamarack	0.0	\$0.00	0.0	\$0.00	1,085.0	\$5.07	0.0	\$0.00	0.0	\$0.00
White Cedar	0.0	\$0.00	0.0	\$0.00	0.0	\$0.00	0.0	\$0.00	0.0	\$0.00
Jack Pine	0.0	\$0.00	7,197.0	\$31.85	155.0	\$14.27	415.0	\$3.00	0.0	\$0.00
Red Pine	504.0	\$156.59	3,875.0	\$32.98	270.0	\$19.90	0.0	\$0.00	0.0	\$0.00
White Pine	0.0	\$0.00	0.0	\$0.00	75.0	\$13.96	0.0	\$0.00	0.0	\$0.00
Maple Species	0.0	\$0.00	0.0	\$0.00	337.0	\$6.49	0.0	\$0.00	0.0	\$0.00
Mixed Species	0.0	\$0.00	0.0	\$0.00	0.0	\$0.00	125.0	\$2.76	2,104.0	\$1.63
Hubbard Co. All Species	587.9	\$148.25	17,063.0	\$27.08	45,287.0	\$25.58	540.0	\$2.94	2,104.0	\$1.63

Itasca Co. Reporting Period: 01/12 to 12/12

Reporting Basis: Appraisal Reports

<u>Species Name</u>	Sawtimber		Pulp and Bolts		Pulpwood		Fuelwood		Biomass	
	<u>MBF</u>	<u>Avg Price</u>	<u>Cords</u>	<u>Avg Price</u>	<u>Cords</u>	<u>Avg Price</u>	<u>Cords</u>	<u>Avg Price</u>	<u>Tons</u>	<u>Avg Price</u>
Aspen	0.0	\$0.00	0.0	\$0.00	38,419.0	\$24.87	7.0	\$4.00	0.0	\$0.00
Balm of Gilead	0.0	\$0.00	0.0	\$0.00	779.0	\$21.20	0.0	\$0.00	0.0	\$0.00
Birch Species	0.0	\$0.00	5,866.0	\$11.40	0.0	\$0.00	4.0	\$4.00	0.0	\$0.00
Ash Species	0.0	\$0.00	2,284.0	\$14.60	0.0	\$0.00	10.0	\$6.00	0.0	\$0.00
Elm Species	0.0	\$0.00	0.0	\$0.00	0.0	\$0.00	0.0	\$0.00	0.0	\$0.00
Oak Species	0.0	\$0.00	711.0	\$24.16	0.0	\$0.00	36.0	\$5.08	0.0	\$0.00
Basswood	0.0	\$0.00	418.0	\$10.33	0.0	\$0.00	0.0	\$0.00	0.0	\$0.00
Other Hdwds	0.0	\$0.00	0.0	\$0.00	0.0	\$0.00	0.0	\$0.00	0.0	\$0.00
Balsam Fir	0.0	\$0.00	5,993.0	\$25.46	0.0	\$0.00	0.0	\$0.00	0.0	\$0.00
White Spruce	0.0	\$0.00	3,035.0	\$28.70	0.0	\$0.00	0.0	\$0.00	0.0	\$0.00
Black Spruce	0.0	\$0.00	1,718.0	\$24.80	0.0	\$0.00	0.0	\$0.00	0.0	\$0.00
Tamarack	0.0	\$0.00	0.0	\$0.00	1,724.0	\$4.57	0.0	\$0.00	0.0	\$0.00
White Cedar	0.0	\$0.00	0.0	\$0.00	0.0	\$0.00	0.0	\$0.00	0.0	\$0.00
Jack Pine	0.0	\$0.00	5,035.0	\$41.85	0.0	\$0.00	2.0	\$10.00	0.0	\$0.00
Red Pine	0.0	\$0.00	13,104.0	\$43.44	0.0	\$0.00	0.0	\$0.00	0.0	\$0.00
White Pine	0.0	\$0.00	468.0	\$46.12	0.0	\$0.00	0.0	\$0.00	0.0	\$0.00
Maple Species	0.0	\$0.00	0.0	\$0.00	2,972.0	\$8.41	10.0	\$4.00	0.0	\$0.00
Mixed Species	0.0	\$0.00	0.0	\$0.00	0.0	\$0.00	0.0	\$0.00	1,345.0	\$1.00
Itasca Co. All Species	0.0	\$0.00	38,632.0	\$31.21	43,894.0	\$22.90	69.0	\$5.03	1,345.0	\$1.00

Koochiching Co. Reporting Period: 01/12 to 12/12

Reporting Basis: Appraisal Reports

<u>Species Name</u>	Sawtimber		Pulp and Bolts		Pulpwood		Fuelwood		Biomass	
	<u>MBF</u>	<u>Avg Price</u>	<u>Cords</u>	<u>Avg Price</u>	<u>Cords</u>	<u>Avg Price</u>	<u>Cords</u>	<u>Avg Price</u>	<u>Tons</u>	<u>Avg Price</u>
Aspen	0.0	\$0.00	0.0	\$0.00	71,775.0	\$27.03	0.0	\$0.00	0.0	\$0.00
Balm of Gilead	0.0	\$0.00	0.0	\$0.00	3,038.0	\$23.37	0.0	\$0.00	0.0	\$0.00
Birch Species	0.0	\$0.00	0.0	\$0.00	3,989.5	\$5.29	0.0	\$0.00	0.0	\$0.00
Ash Species	0.0	\$0.00	0.0	\$0.00	2,497.0	\$5.53	50.0	\$5.10	0.0	\$0.00
Elm Species	0.0	\$0.00	0.0	\$0.00	0.0	\$0.00	0.0	\$0.00	0.0	\$0.00
Oak Species	0.0	\$0.00	0.0	\$0.00	0.0	\$0.00	0.0	\$0.00	0.0	\$0.00
Basswood	0.0	\$0.00	0.0	\$0.00	95.0	\$5.42	0.0	\$0.00	0.0	\$0.00
Other Hdwds	0.0	\$0.00	0.0	\$0.00	0.0	\$0.00	200.0	\$2.40	0.0	\$0.00
Balsam Fir	0.0	\$0.00	0.0	\$0.00	13,260.0	\$15.84	0.0	\$0.00	0.0	\$0.00
White Spruce	0.0	\$0.00	0.0	\$0.00	0.0	\$0.00	0.0	\$0.00	0.0	\$0.00
Black Spruce	0.0	\$0.00	0.0	\$0.00	15,611.0	\$21.68	0.0	\$0.00	0.0	\$0.00
Tamarack	0.0	\$0.00	0.0	\$0.00	2,854.0	\$6.01	0.0	\$0.00	0.0	\$0.00
White Cedar	0.0	\$0.00	0.0	\$0.00	248.0	\$4.13	0.0	\$0.00	0.0	\$0.00
Jack Pine	0.0	\$0.00	974.0	\$35.12	0.0	\$0.00	0.0	\$0.00	0.0	\$0.00
Red Pine	0.0	\$0.00	0.0	\$0.00	548.0	\$14.59	0.0	\$0.00	0.0	\$0.00
White Pine	0.0	\$0.00	0.0	\$0.00	70.0	\$16.41	0.0	\$0.00	0.0	\$0.00
Maple Species	0.0	\$0.00	0.0	\$0.00	395.0	\$5.99	0.0	\$0.00	0.0	\$0.00
Mixed Species	0.0	\$0.00	0.0	\$0.00	0.0	\$0.00	0.0	\$0.00	130.0	\$0.50
Koochiching Co. All Species	0.0	\$0.00	974.0	\$35.12	114,380.5	\$22.94	250.0	\$2.94	130.0	\$0.50

Lake Co. Reporting Period: 01/12 to 12/12

Reporting Basis: Appraisal Reports

Species Name	Sawtimber		Pulp and Bolts		Pulpwood		Fuelwood		Biomass	
	MBF	Avg Price	Cords	Avg Price	Cords	Avg Price	Cords	Avg Price	Tons	Avg Price
Aspen	0.0	\$0.00	0.0	\$0.00	4,407.0	\$21.91	0.0	\$0.00	0.0	\$0.00
Balm of Gilead	0.0	\$0.00	0.0	\$0.00	144.0	\$7.90	0.0	\$0.00	0.0	\$0.00
Birch Species	0.0	\$0.00	0.0	\$0.00	1,818.0	\$9.25	0.0	\$0.00	0.0	\$0.00
Ash Species	4.0	\$97.00	0.0	\$0.00	593.0	\$6.42	0.0	\$0.00	0.0	\$0.00
Elm Species	0.0	\$0.00	0.0	\$0.00	0.0	\$0.00	0.0	\$0.00	0.0	\$0.00
Oak Species	0.0	\$0.00	0.0	\$0.00	0.0	\$0.00	0.0	\$0.00	0.0	\$0.00
Basswood	0.0	\$0.00	0.0	\$0.00	269.0	\$7.51	0.0	\$0.00	0.0	\$0.00
Other Hdwds	2.0	\$77.50	0.0	\$0.00	2,963.0	\$7.75	0.0	\$0.00	0.0	\$0.00
Balsam Fir	0.0	\$0.00	0.0	\$0.00	1,141.0	\$11.01	0.0	\$0.00	0.0	\$0.00
White Spruce	0.0	\$0.00	0.0	\$0.00	236.0	\$13.81	0.0	\$0.00	0.0	\$0.00
Black Spruce	0.0	\$0.00	0.0	\$0.00	627.0	\$17.70	0.0	\$0.00	0.0	\$0.00
Tamarack	0.0	\$0.00	0.0	\$0.00	110.0	\$7.00	0.0	\$0.00	0.0	\$0.00
White Cedar	0.0	\$0.00	0.0	\$0.00	200.0	\$4.00	0.0	\$0.00	0.0	\$0.00
Jack Pine	0.0	\$0.00	0.0	\$0.00	0.0	\$0.00	0.0	\$0.00	0.0	\$0.00
Red Pine	0.0	\$0.00	0.0	\$0.00	186.0	\$8.55	0.0	\$0.00	0.0	\$0.00
White Pine	0.0	\$0.00	24.0	\$25.00	0.0	\$0.00	0.0	\$0.00	0.0	\$0.00
Maple Species	0.0	\$0.00	0.0	\$0.00	0.0	\$0.00	0.0	\$0.00	0.0	\$0.00
Mixed Species	0.0	\$0.00	0.0	\$0.00	0.0	\$0.00	0.0	\$0.00	0.0	\$0.00
Lake Co. All Species	6.0	\$90.50	24.0	\$25.00	12,694.0	\$13.66	0.0	\$0.00	0.0	\$0.00

Pine Co. Reporting Period: 01/12 to 12/12

Reporting Basis: Appraisal Reports

<u>Species Name</u>	Sawtimber		Pulp and Bolts		Pulpwood		Fuelwood		Biomass	
	<u>MBF</u>	<u>Avg Price</u>	<u>Cords</u>	<u>Avg Price</u>	<u>Cords</u>	<u>Avg Price</u>	<u>Cords</u>	<u>Avg Price</u>	<u>Tons</u>	<u>Avg Price</u>
Aspen	0.0	\$0.00	0.0	\$0.00	5,185.0	\$37.43	0.0	\$0.00	0.0	\$0.00
Balm of Gilead	0.0	\$0.00	0.0	\$0.00	0.0	\$0.00	0.0	\$0.00	0.0	\$0.00
Birch Species	0.0	\$0.00	1,189.0	\$19.81	0.0	\$0.00	0.0	\$0.00	0.0	\$0.00
Ash Species	0.0	\$0.00	4,241.0	\$20.35	0.0	\$0.00	0.0	\$0.00	0.0	\$0.00
Elm Species	0.0	\$0.00	0.0	\$0.00	0.0	\$0.00	0.0	\$0.00	0.0	\$0.00
Oak Species	0.0	\$0.00	427.0	\$43.71	0.0	\$0.00	0.0	\$0.00	0.0	\$0.00
Basswood	0.0	\$0.00	5.0	\$10.20	0.0	\$0.00	0.0	\$0.00	0.0	\$0.00
Other Hdwds	0.0	\$0.00	0.0	\$0.00	3,405.0	\$7.65	0.0	\$0.00	0.0	\$0.00
Balsam Fir	0.0	\$0.00	5.0	\$19.60	0.0	\$0.00	0.0	\$0.00	0.0	\$0.00
White Spruce	0.0	\$0.00	0.0	\$0.00	0.0	\$0.00	0.0	\$0.00	0.0	\$0.00
Black Spruce	0.0	\$0.00	0.0	\$0.00	0.0	\$0.00	0.0	\$0.00	0.0	\$0.00
Tamarack	0.0	\$0.00	0.0	\$0.00	0.0	\$0.00	0.0	\$0.00	0.0	\$0.00
White Cedar	0.0	\$0.00	0.0	\$0.00	0.0	\$0.00	0.0	\$0.00	0.0	\$0.00
Jack Pine	0.0	\$0.00	0.0	\$0.00	80.0	\$15.85	0.0	\$0.00	0.0	\$0.00
Red Pine	0.0	\$0.00	0.0	\$0.00	0.0	\$0.00	0.0	\$0.00	0.0	\$0.00
White Pine	0.0	\$0.00	0.0	\$0.00	0.0	\$0.00	0.0	\$0.00	0.0	\$0.00
Maple Species	0.0	\$0.00	1,446.0	\$19.53	0.0	\$0.00	0.0	\$0.00	0.0	\$0.00
Mixed Species	0.0	\$0.00	0.0	\$0.00	0.0	\$0.00	0.0	\$0.00	0.0	\$0.00
Pine Co. All Species	0.0	\$0.00	7,313.0	\$21.46	8,670.0	\$25.53	0.0	\$0.00	0.0	\$0.00

St. Louis Co. Reporting Period: 01/12 to 12/12

Reporting Basis: Appraisal Reports

Species Name	Sawtimber		Pulp and Bolts		Pulpwood		Fuelwood		Biomass	
	MBF	Avg Price	Cords	Avg Price	Cords	Avg Price	Cords	Avg Price	Tons	Avg Price
Aspen	0.0	\$0.00	0.0	\$0.00	82,382.0	\$28.96	0.0	\$0.00	0.0	\$0.00
Balm of Gilead	0.0	\$0.00	0.0	\$0.00	2,184.0	\$25.98	0.0	\$0.00	0.0	\$0.00
Birch Species	0.0	\$0.00	0.0	\$0.00	23,131.0	\$12.49	0.0	\$0.00	0.0	\$0.00
Ash Species	0.0	\$0.00	0.0	\$0.00	2,939.0	\$5.94	0.0	\$0.00	0.0	\$0.00
Elm Species	0.0	\$0.00	0.0	\$0.00	0.0	\$0.00	0.0	\$0.00	0.0	\$0.00
Oak Species	0.0	\$0.00	0.0	\$0.00	137.0	\$11.69	0.0	\$0.00	0.0	\$0.00
Basswood	0.0	\$0.00	0.0	\$0.00	983.0	\$7.91	0.0	\$0.00	0.0	\$0.00
Other Hdwds	0.0	\$0.00	0.0	\$0.00	0.0	\$0.00	0.0	\$0.00	0.0	\$0.00
Balsam Fir	0.0	\$0.00	21,114.0	\$18.12	0.0	\$0.00	0.0	\$0.00	0.0	\$0.00
White Spruce	0.0	\$0.00	6,544.0	\$24.82	0.0	\$0.00	0.0	\$0.00	0.0	\$0.00
Black Spruce	0.0	\$0.00	20,970.0	\$26.96	0.0	\$0.00	0.0	\$0.00	0.0	\$0.00
Tamarack	0.0	\$0.00	0.0	\$0.00	4,137.0	\$5.12	0.0	\$0.00	0.0	\$0.00
White Cedar	0.0	\$0.00	0.0	\$0.00	0.0	\$0.00	0.0	\$0.00	0.0	\$0.00
Jack Pine	0.0	\$0.00	3,154.0	\$23.33	0.0	\$0.00	0.0	\$0.00	0.0	\$0.00
Red Pine	0.0	\$0.00	5,250.0	\$42.37	0.0	\$0.00	0.0	\$0.00	0.0	\$0.00
White Pine	0.0	\$0.00	326.0	\$34.80	0.0	\$0.00	0.0	\$0.00	0.0	\$0.00
Maple Species	0.0	\$0.00	0.0	\$0.00	12,211.0	\$7.78	0.0	\$0.00	0.0	\$0.00
Mixed Species	0.0	\$0.00	0.0	\$0.00	0.0	\$0.00	0.0	\$0.00	0.0	\$0.00
St. Louis Co. All Species	0.0	\$0.00	57,358.0	\$24.71	128,104.0	\$22.44	0.0	\$0.00	0.0	\$0.00

Wadena Co. Reporting Period: 01/12 to 12/12

Reporting Basis: Appraisal Reports

Species Name	Sawtimber		Pulp and Bolts		Pulpwood		Fuelwood		Biomass	
	MBF	Avg Price	Cords	Avg Price	Cords	Avg Price	Cords	Avg Price	Tons	Avg Price
Aspen	0.0	\$0.00	0.0	\$0.00	9.0	\$21.22	0.0	\$0.00	0.0	\$0.00
Balm of Gilead	0.0	\$0.00	0.0	\$0.00	0.0	\$0.00	0.0	\$0.00	0.0	\$0.00
Birch Species	0.0	\$0.00	0.0	\$0.00	3.0	\$8.67	0.0	\$0.00	0.0	\$0.00
Ash Species	0.0	\$0.00	0.0	\$0.00	0.0	\$0.00	0.0	\$0.00	0.0	\$0.00
Elm Species	0.0	\$0.00	0.0	\$0.00	0.0	\$0.00	0.0	\$0.00	0.0	\$0.00
Oak Species	0.0	\$0.00	0.0	\$0.00	0.0	\$0.00	0.0	\$0.00	0.0	\$0.00
Basswood	0.0	\$0.00	0.0	\$0.00	0.0	\$0.00	0.0	\$0.00	0.0	\$0.00
Other Hardwoods	0.0	\$0.00	0.0	\$0.00	0.0	\$0.00	0.0	\$0.00	0.0	\$0.00
Balsam Fir	0.0	\$0.00	0.0	\$0.00	0.0	\$0.00	0.0	\$0.00	0.0	\$0.00
White Spruce	0.0	\$0.00	0.0	\$0.00	0.0	\$0.00	0.0	\$0.00	0.0	\$0.00
Black Spruce	0.0	\$0.00	0.0	\$0.00	0.0	\$0.00	0.0	\$0.00	0.0	\$0.00
Tamarack	0.0	\$0.00	0.0	\$0.00	0.0	\$0.00	0.0	\$0.00	0.0	\$0.00
White Cedar	0.0	\$0.00	0.0	\$0.00	0.0	\$0.00	0.0	\$0.00	0.0	\$0.00
Jack Pine	0.0	\$0.00	456.0	\$45.14	0.0	\$0.00	0.0	\$0.00	0.0	\$0.00
Red Pine	0.0	\$0.00	39.0	\$39.28	0.0	\$0.00	0.0	\$0.00	0.0	\$0.00
White Pine	0.0	\$0.00	0.0	\$0.00	0.0	\$0.00	0.0	\$0.00	0.0	\$0.00
Maple Species	0.0	\$0.00	0.0	\$0.00	0.0	\$0.00	0.0	\$0.00	0.0	\$0.00
Mixed Species	0.0	\$0.00	0.0	\$0.00	0.0	\$0.00	0.0	\$0.00	200.0	\$1.00
Wadena Co. All Species	0.0	\$0.00	495.0	\$44.67	12.0	\$18.08	0.0	\$0.00	200.0	\$1.00

2012 MINNESOTA FEDERAL AGENCIES

USDI - BIA	Reporting Period: 01/12 to 12/12				Reporting Basis: Scale Receipts						
	Sawtimber		Pulp and Bolts		Pulpwood		Fuelwood		Biomass		
	Species Name	MBF	Avg Price	Cords	Avg Price	Cords	Avg Price	Cords	Avg Price	Tons	Avg Price
	Aspen	0.0	\$0.00	0.0	\$0.00	33,131.8	\$16.87	0.0	\$0.00	0.0	\$0.00
	Balm of Gilead	0.0	\$0.00	0.0	\$0.00	427.0	\$11.04	0.0	\$0.00	0.0	\$0.00
	Birch Species	0.0	\$0.00	0.0	\$0.00	1,214.7	\$6.72	136.2	\$4.77	0.0	\$0.00
	Ash Species	0.0	\$0.00	0.0	\$0.00	150.4	\$5.07	653.3	\$5.07	0.0	\$0.00
	Elm Species	0.0	\$0.00	0.0	\$0.00	26.6	\$6.02	0.0	\$0.00	0.0	\$0.00
	Oak Species	6.1	\$79.67	0.0	\$0.00	688.8	\$6.17	36.6	\$5.00	0.0	\$0.00
	Basswood	0.0	\$0.00	18.2	\$16.81	229.0	\$5.96	0.0	\$0.00	0.0	\$0.00
	Other Hdws	0.0	\$0.00	0.0	\$0.00	328.2	\$7.91	663.4	\$4.39	0.0	\$0.00
	Balsam Fir	0.0	\$0.00	0.0	\$0.00	1,019.5	\$11.56	0.0	\$0.00	0.0	\$0.00
	White Spruce	0.0	\$0.00	255.5	\$17.12	654.3	\$10.65	0.0	\$0.00	0.0	\$0.00
	Black Spruce	0.0	\$0.00	333.2	\$24.59	21.9	\$18.36	0.0	\$0.00	0.0	\$0.00
	Tamarack	0.0	\$0.00	0.0	\$0.00	486.7	\$3.68	0.0	\$0.00	0.0	\$0.00
	White Cedar	0.0	\$0.00	0.0	\$0.00	86.9	\$6.38	0.0	\$0.00	0.0	\$0.00
	Jack Pine	0.0	\$0.00	356.7	\$23.07	1,601.1	\$9.60	0.0	\$0.00	0.0	\$0.00
	Red Pine	142.7	\$88.59	1,552.5	\$25.63	1,943.3	\$9.40	0.0	\$0.00	0.0	\$0.00
	White Pine	151.4	\$94.92	25.0	\$25.48	218.8	\$11.15	0.0	\$0.00	0.0	\$0.00
	Maple Species	0.0	\$0.00	0.0	\$0.00	0.0	\$0.00	0.0	\$0.00	0.0	\$0.00
	Mixed Species	0.0	\$0.00	0.0	\$0.00	0.0	\$0.00	0.0	\$0.00	0.0	\$0.00
USDI - BIA	All Species	300.2	\$91.60	2,541.1	\$24.21	42,229.0	\$15.12	1,489.5	\$4.74	0.0	\$0.00

Chippewa N.F. Reporting Period: 10/11 to 09/12

Reporting Basis: Appraisal Reports

<u>Species Name</u>	<u>Sawtimber</u>		<u>Pulp and Bolts</u>		<u>Pulpwood</u>		<u>Fuelwood</u>		<u>Biomass</u>	
	<u>MBF</u>	<u>Avg Price</u>	<u>Cords</u>	<u>Avg Price</u>	<u>Cords</u>	<u>Avg Price</u>	<u>Cords</u>	<u>Avg Price</u>	<u>Tons</u>	<u>Avg Price</u>
Aspen	0.0	\$0.00	0.0	\$0.00	40,970.0	\$33.50	0.0	\$0.00	0.0	\$0.00
Balm of Gilead	0.0	\$0.00	0.0	\$0.00	0.0	\$0.00	0.0	\$0.00	0.0	\$0.00
Birch Species	0.0	\$0.00	0.0	\$0.00	0.0	\$0.00	0.0	\$0.00	0.0	\$0.00
Ash Species	0.0	\$0.00	0.0	\$0.00	0.0	\$0.00	0.0	\$0.00	0.0	\$0.00
Elm Species	0.0	\$0.00	0.0	\$0.00	0.0	\$0.00	0.0	\$0.00	0.0	\$0.00
Oak Species	0.0	\$0.00	0.0	\$0.00	0.0	\$0.00	0.0	\$0.00	0.0	\$0.00
Basswood	0.0	\$0.00	0.0	\$0.00	0.0	\$0.00	0.0	\$0.00	0.0	\$0.00
Other Hdwds	1,238.0	\$36.81	12,045.0	\$17.47	0.0	\$0.00	1,038.0	\$4.05	0.0	\$0.00
Balsam Fir	0.0	\$0.00	3,136.0	\$35.36	0.0	\$0.00	0.0	\$0.00	0.0	\$0.00
White Spruce	41.0	\$59.51	508.0	\$22.06	0.0	\$0.00	0.0	\$0.00	0.0	\$0.00
Black Spruce	0.0	\$0.00	0.0	\$0.00	0.0	\$0.00	0.0	\$0.00	0.0	\$0.00
Tamarack	0.0	\$0.00	0.0	\$0.00	134.0	\$8.94	0.0	\$0.00	0.0	\$0.00
White Cedar	0.0	\$0.00	0.0	\$0.00	0.0	\$0.00	0.0	\$0.00	0.0	\$0.00
Jack Pine	520.0	\$138.95	0.0	\$0.00	0.0	\$0.00	0.0	\$0.00	0.0	\$0.00
Red Pine	7,021.0	\$128.49	15,913.0	\$29.36	0.0	\$0.00	0.0	\$0.00	0.0	\$0.00
White Pine	0.0	\$0.00	0.0	\$0.00	0.0	\$0.00	0.0	\$0.00	0.0	\$0.00
Maple Species	0.0	\$0.00	0.0	\$0.00	0.0	\$0.00	0.0	\$0.00	0.0	\$0.00
Mixed Species	0.0	\$0.00	0.0	\$0.00	0.0	\$0.00	0.0	\$0.00	1,011.0	\$0.33
Chippewa N.F. All Species	8,820.0	\$115.91	31,602.0	\$25.31	41,104.0	\$33.42	1,038.0	\$4.05	1,011.0	\$0.33

Superior N.F. Reporting Period: 01/12 to 12/12

Reporting Basis: Appraisal Reports

Species Name	Sawtimber		Pulp and Bolts		Pulpwood		Fuelwood		Biomass	
	MBF	Avg Price	Cords	Avg Price	Cords	Avg Price	Cords	Avg Price	Tons	Avg Price
Aspen	0.0	\$0.00	0.0	\$0.00	55,939.0	\$15.54	0.0	\$0.00	0.0	\$0.00
Balm of Gilead	0.0	\$0.00	0.0	\$0.00	0.0	\$0.00	0.0	\$0.00	0.0	\$0.00
Birch Species	0.0	\$0.00	718.0	\$16.56	15,067.0	\$4.76	0.0	\$0.00	0.0	\$0.00
Ash Species	0.0	\$0.00	0.0	\$0.00	0.0	\$0.00	0.0	\$0.00	0.0	\$0.00
Elm Species	0.0	\$0.00	0.0	\$0.00	0.0	\$0.00	0.0	\$0.00	0.0	\$0.00
Oak Species	0.0	\$0.00	0.0	\$0.00	0.0	\$0.00	0.0	\$0.00	0.0	\$0.00
Basswood	0.0	\$0.00	0.0	\$0.00	0.0	\$0.00	0.0	\$0.00	0.0	\$0.00
Other Hdwds	0.0	\$0.00	0.0	\$0.00	0.0	\$0.00	0.0	\$0.00	0.0	\$0.00
Balsam Fir	0.0	\$0.00	0.0	\$0.00	10,671.0	\$11.67	0.0	\$0.00	0.0	\$0.00
White Spruce	0.0	\$0.00	4,738.0	\$25.78	8,091.0	\$16.40	0.0	\$0.00	0.0	\$0.00
Black Spruce	0.0	\$0.00	0.0	\$0.00	8,000.0	\$16.40	0.0	\$0.00	0.0	\$0.00
Tamarack	0.0	\$0.00	397.0	\$16.57	0.0	\$0.00	0.0	\$0.00	0.0	\$0.00
White Cedar	0.0	\$0.00	0.0	\$0.00	0.0	\$0.00	0.0	\$0.00	0.0	\$0.00
Jack Pine	0.0	\$0.00	5,766.0	\$22.46	4,158.0	\$8.40	0.0	\$0.00	0.0	\$0.00
Red Pine	0.0	\$0.00	3,760.0	\$29.20	4,563.0	\$8.34	0.0	\$0.00	0.0	\$0.00
White Pine	0.0	\$0.00	1,680.0	\$17.52	934.0	\$9.18	0.0	\$0.00	0.0	\$0.00
Maple Species	0.0	\$0.00	0.0	\$0.00	6,807.0	\$5.76	0.0	\$0.00	0.0	\$0.00
Mixed Species	0.0	\$0.00	0.0	\$0.00	0.0	\$0.00	210.0	\$10.00	305.0	\$1.49
Superior N.F. All Species	0.0	\$0.00	17,059.0	\$24.00	114,230.0	\$12.69	210.0	\$10.00	305.0	\$1.49

MnDNR Reporting Period: 01/12 to 12/12

Reporting Basis: Appraisal Reports

Species Name	Sawtimber		Pulp and Bolts		Pulpwood		Fuelwood		Biomass	
	MBF	Avg Price	Cords	Avg Price	Cords	Avg Price	Cords	Avg Price	Tons	Avg Price
Aspen	2.8	\$43.73	0.0	\$0.00	328,757.8	\$24.93	39.0	\$2.00	2,550.5	\$1.00
Balm of Gilead	0.0	\$0.00	0.0	\$0.00	911.0	\$17.13	0.0	\$0.00	0.0	\$0.00
Birch Species	1.9	\$35.70	9,575.0	\$12.69	17,035.9	\$8.93	31.0	\$3.56	242.1	\$1.00
Ash Species	21.1	\$36.36	0.0	\$0.00	9,478.8	\$5.93	150.0	\$5.66	0.0	\$0.00
Elm Species	13.1	\$42.45	0.0	\$0.00	11.0	\$3.62	0.0	\$0.00	0.0	\$0.00
Oak Species	1,037.2	\$287.52	16,325.0	\$17.50	2,792.8	\$9.76	165.0	\$5.65	0.0	\$0.00
Basswood	48.5	\$110.89	4,009.0	\$9.35	1,865.0	\$4.33	0.0	\$0.00	0.0	\$0.00
Other Hardwoods	32.3	\$59.10	0.0	\$0.00	26,928.0	\$11.00	10.0	\$4.00	82.5	\$1.00
Balsam Fir	0.0	\$0.00	7,600.0	\$18.85	24,101.0	\$14.70	35.0	\$1.57	0.0	\$0.00
White Spruce	134.1	\$80.92	8,508.0	\$20.58	2,603.0	\$12.64	0.0	\$0.00	0.0	\$0.00
Black Spruce	0.0	\$0.00	18,690.0	\$27.08	54,156.0	\$16.93	0.0	\$0.00	0.0	\$0.00
Tamarack	0.0	\$0.00	0.0	\$0.00	27,147.5	\$6.60	844.0	\$2.55	0.0	\$0.00
White Cedar	0.0	\$0.00	0.0	\$0.00	2,097.1	\$5.29	0.0	\$0.00	0.0	\$0.00
Jack Pine	0.0	\$0.00	14,689.3	\$28.77	11,354.0	\$19.79	393.0	\$2.35	0.0	\$0.00
Red Pine	3,112.5	\$98.39	40,986.0	\$28.73	4,262.6	\$8.83	0.0	\$0.00	0.0	\$0.00
White Pine	14.4	\$48.80	465.0	\$40.89	59.0	\$16.01	0.0	\$0.00	0.0	\$0.00
Maple Species	34.0	\$292.13	6,285.0	\$9.99	13,017.0	\$7.34	0.0	\$0.00	209.0	\$1.00
Mixed Species	0.0	\$0.00	0.0	\$0.00	0.0	\$0.00	1,423.0	\$6.48	61,092.0	\$0.80
MnDNR All Species	4,451.9	\$142.58	127,132.3	\$23.21	526,577.5	\$20.14	3,090.0	\$4.65	64,176.1	\$0.81