

2021 Minnesota Public Agencies Stumpage Price Review and Price Indices

August 3, 2022

Download at URL: <http://www.dnr.state.mn.us/forestry/timbersales/stumpage.html>

Highlights

- In 2021, all species and products stumpage sold by public agencies in Minnesota totaled 1.651 million cord equivalents with a value of \$44.774 million compared to 1.635 million cord equivalents sold with a value of \$40.716 million in 2020. This amounts to a year-over-year volume increase of 15,125 cord equivalents or 0.9 percent and a year-over-year value increase of \$4.057 million or 10 percent (Figure 1). In 2021, the average all species and products sell price was \$27.12 per cord equivalent compared to \$24.89 in 2020, a price increase of \$2.23 per cord equivalent or 9 percent.

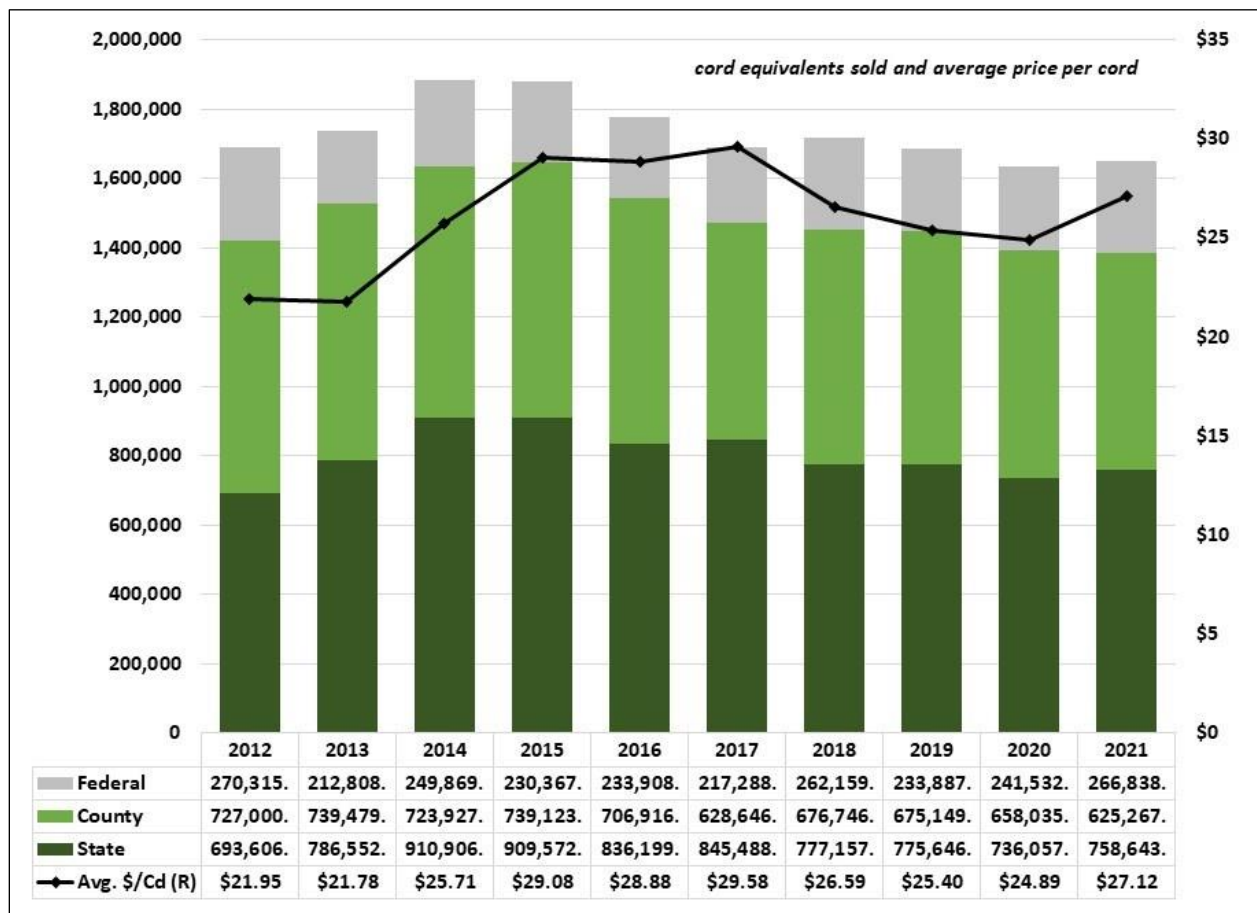


Figure 1: Volume sold by ownership category and average sell price per cord equivalent, 2012-2021. (a)

a) Product categories: sawtimber, pulp & bolts, pulpwood, fuelwood, and biomass.

- In 2021, the average stumpage price received by public agencies for all-species hardwood pulpwood and sawbolt cord products increased to \$26.73 per cord from \$25.52 per cord in 2020, a price increase of \$1.21 per cord or 4.8 percent. In 2021, the average public agencies aspen stumpage price received was \$30.73 per cord compared to \$30.14 per cord in 2020, a price increase of \$0.59 per cord or 2 percent (Figure 2, Table 2, page 6).

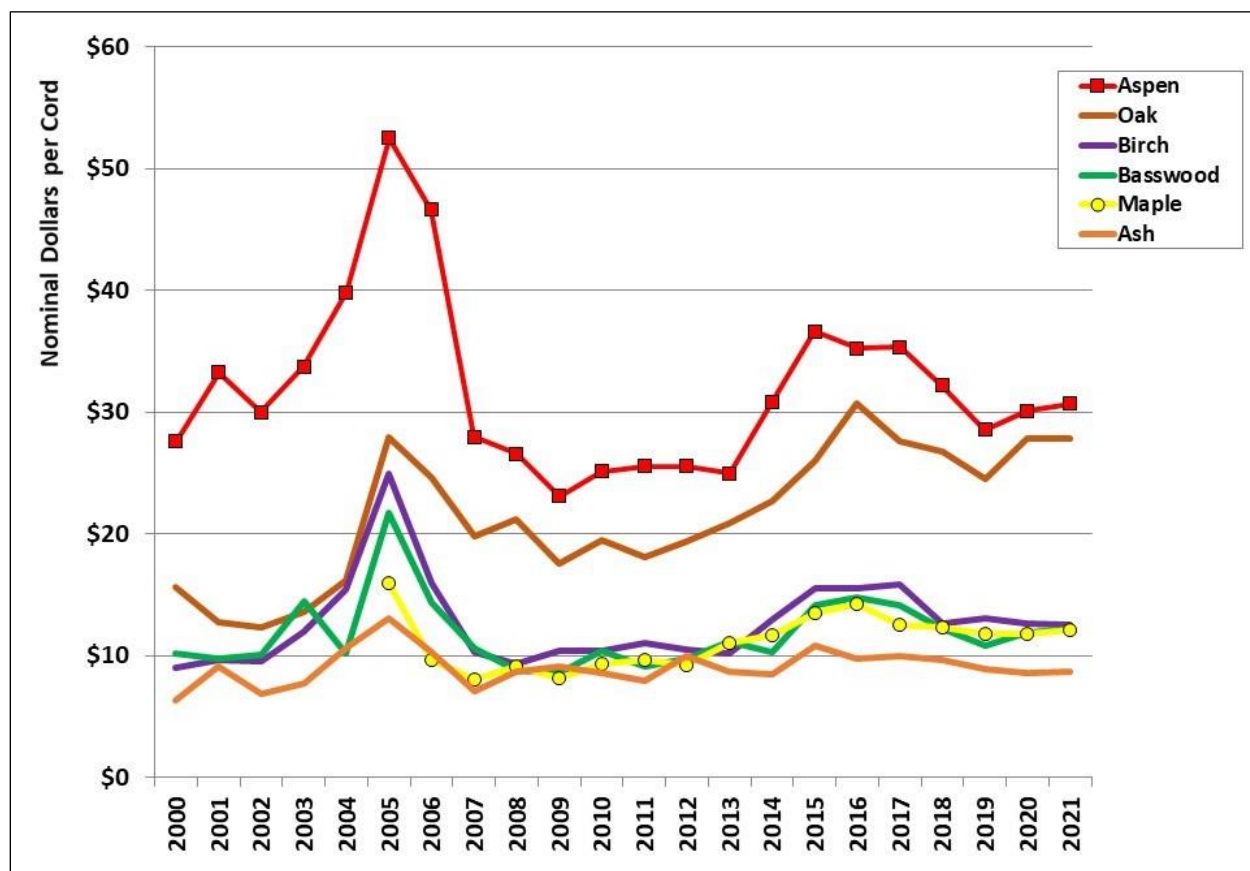


Figure 2: Hardwood cord product prices by species group, 2000-2021. (a)

a) Product categories: pulp & bolts and pulpwood only.

- In 2021, the average stumpage price received by public agencies for all-species softwood pulpwood and sawbolt cord products increased to \$21.64 per cord from \$21.61 per cord in 2020, a price increase of \$0.03 per cord or 0.1 percent. In 2021, the average public agencies red pine cord products stumpage price was \$36.67 per cord compared to \$31.61 per cord in 2020, a year-over-year price increase of \$5.06 per cord or 16 percent. In 2021, the average public agencies black spruce cord products stumpage price was \$17.60 per cord compared to \$20.84 per cord in 2020, a year-over-year price decrease of \$3.24 per cord or 15.5 percent (Figure 3, Table 2, page 6). The large year-over-year decline in black spruce is primarily attributable to the permanent closure of the Verso-Duluth paper mill in mid-CY2020.

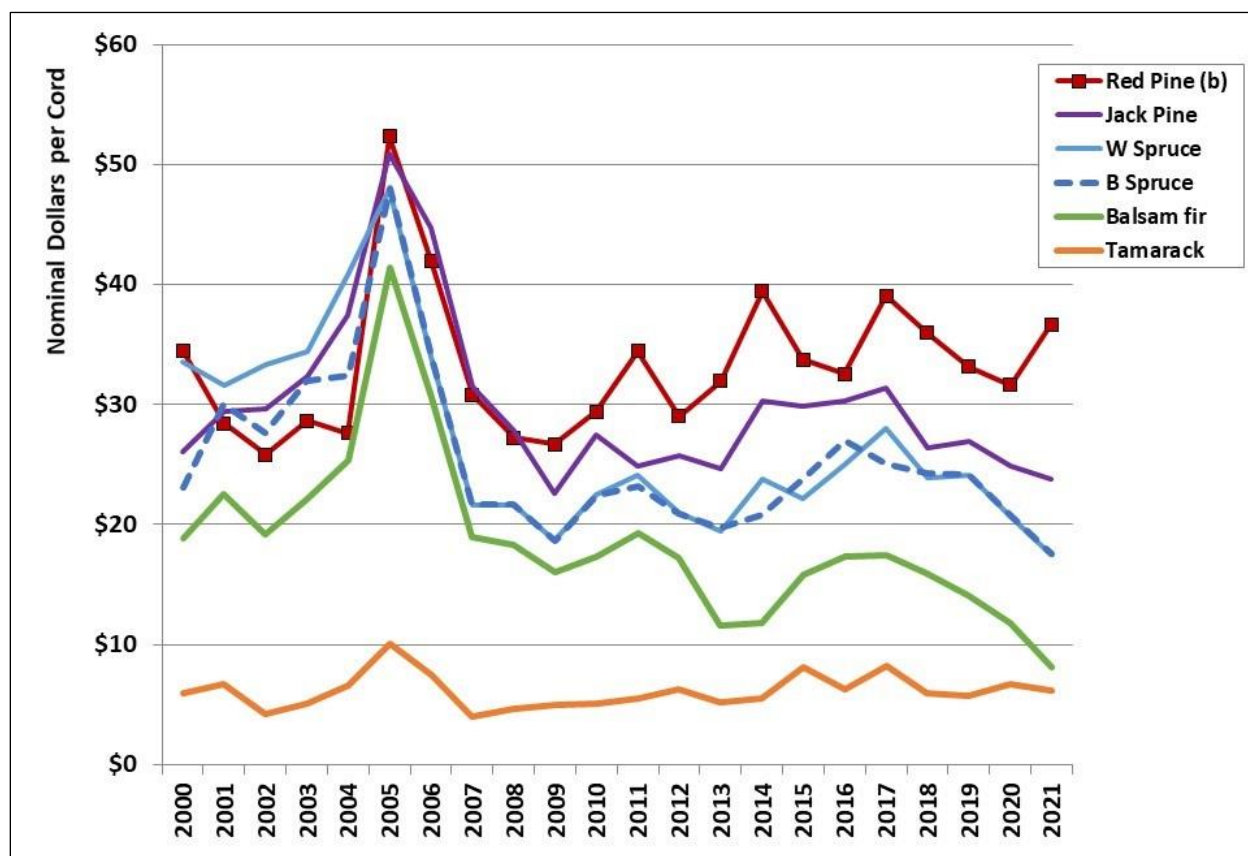


Figure 3: Softwood cord product prices by species group, 2000-2021. (a)

a) Product categories: pulpwood and pulp & bolts only.

b) Includes white pine through 2010.

- In 2021, the average stumpage price received by public agencies for all-species sawtimber increased to \$140.73 per Mbf compared to \$125.95 per Mbf in 2020, a year-over-year price increase of \$14.78 per Mbf or 11.7 percent. In 2021, the average price of red pine sawtimber increased to \$149.11 per Mbf compared to \$128.10 per Mbf in 2020, a price increase of \$21.01 per Mbf or 16.4 percent. In 2021, the average price of oak sawtimber decreased to \$108.64 compared to \$161.13 in 2020, a price decrease of \$52.49 per Mbf or 32.6 percent (Figure 4, Table 3, page 7).

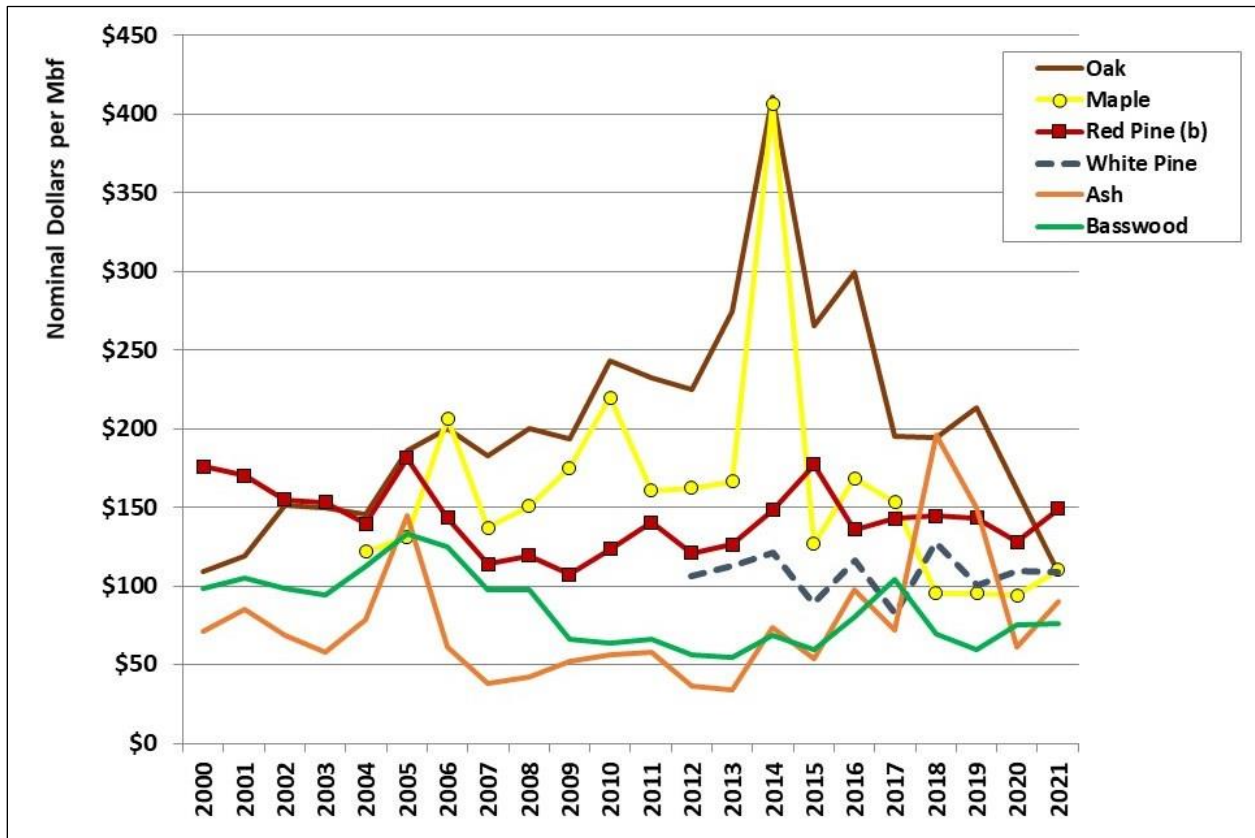


Figure 4: Sawtimber stumpage prices by species group, 2000-2021. (a)

a) Sawtimber units of measure include both Scribner log rule and cords converted to thousand board feet (Mbf) at two cords per Mbf.

b) Includes white pine through 2011.

Inflation Adjusted Stumpage Price Indices

The Implicit Price Deflator for Gross Domestic Product (GDP) is baseline inflation (all indices base year 2000=100). In 2021, the Inflation Index increased to 151.7, a 4.2 percent increase year-over-year. In 2021, the all-public-agencies Aspen Cord Price Index increased 2 percent year-over-year to 111.3. The Black Spruce Cord Price Index decreased 15.5 percent year-over-year to 76.4. The Red Pine Mbf Price Index increased 16.4 percent year-over-year to 84.7. The Mbf Composite Price Index increased 11.7 percent year-over-year to 131.5 (Figure 5, Table 1).

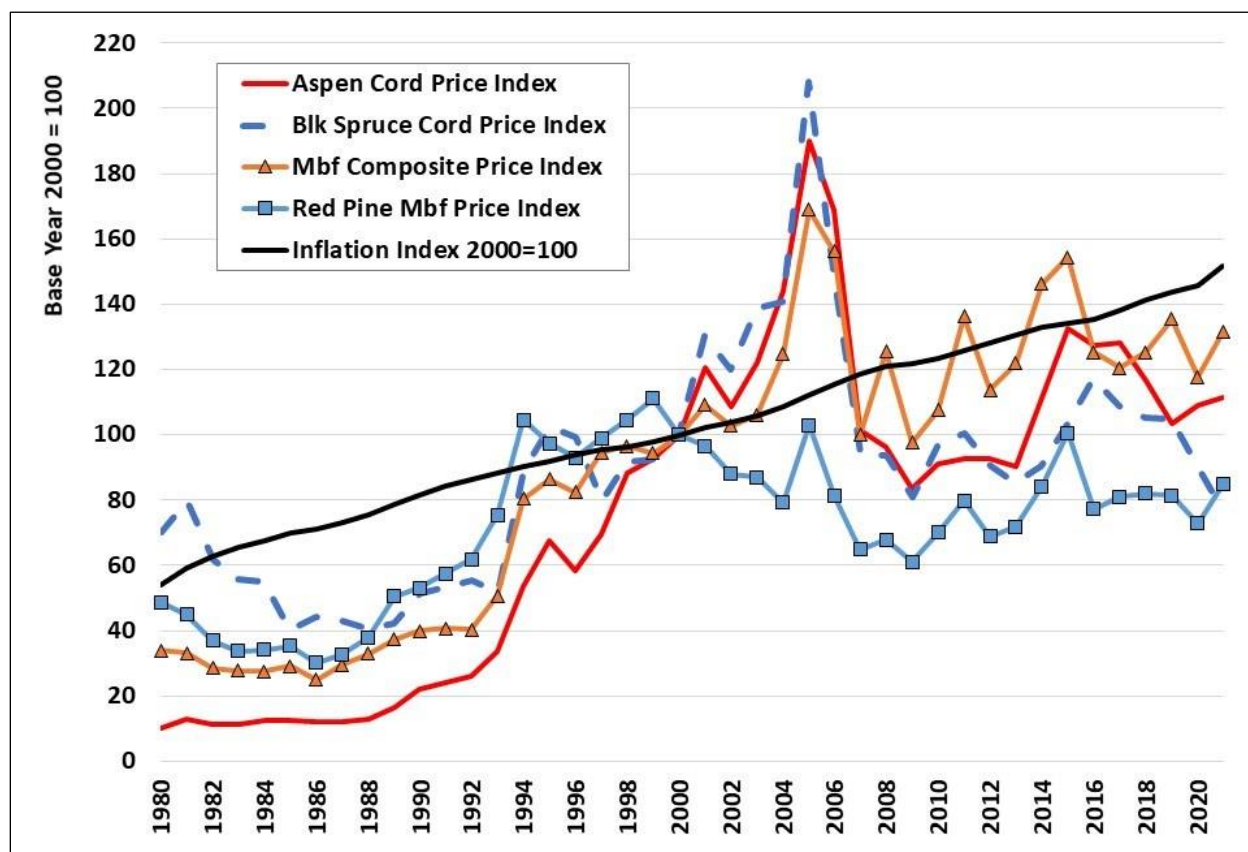


Figure 5: Inflation adjusted public agencies stumpage price indices, 1980-2021.

Table 1: Public stumpage price indices and inflation, base year 2000 = 100.

Price Index	2017	2018	2019	2020	2021	Y/Y Δ	Y/Y Δ%
Aspen Cord Price Index	128.0	116.6	103.4	109.1	111.3	2.1	2.0%
Black Spruce Cord Price Index	108.7	105.4	104.9	90.5	76.4	(14.1)	-15.5%
Red Pine Mbf Price Index	81.1	82.0	81.4	72.8	84.7	11.9	16.4%
Mbf Composite Price Index	120.4	125.2	135.4	117.7	131.5	13.8	11.7%
Inflation Index	138.1	141.4	143.9	145.7	151.7	6.1	4.2%

Historical Prices

Table 2: Statewide average prices received for stumpage sold in cords by public agencies in Minnesota, 10-year history.

Cord Products (Nominal \$/Cord) (a)	2012	2013	2014	2015	2016	2017	2018	2019	2020	2021	21/20 Δ\$YoY	21/20 Δ%YoY
Ash	\$10.02	\$8.66	\$8.51	\$10.88	\$9.81	\$9.98	\$9.68	\$8.92	\$8.55	\$8.69	\$0.14	1.6%
Aspen	\$25.59	\$24.99	\$30.80	\$36.64	\$35.23	\$35.36	\$32.20	\$28.55	\$30.14	\$30.73	\$0.59	2.0%
Balm	\$22.77	\$20.56	\$24.80	\$27.68	\$27.46	\$30.56	\$25.55	\$25.59	\$25.22	\$26.26	\$1.04	4.1%
Birch	\$10.54	\$10.18	\$13.00	\$15.60	\$15.53	\$15.92	\$12.66	\$13.11	\$12.64	\$12.57	(\$0.07)	-0.6%
Oak	\$19.38	\$20.89	\$22.68	\$26.06	\$30.76	\$27.62	\$26.82	\$24.50	\$27.81	\$27.88	\$0.07	0.3%
Basswood	\$9.79	\$11.13	\$10.30	\$14.19	\$14.78	\$14.18	\$12.19	\$10.86	\$11.96	\$12.19	\$0.23	1.9%
Maple	\$9.27	\$11.10	\$11.72	\$13.50	\$14.26	\$12.57	\$12.34	\$11.76	\$11.82	\$12.12	\$0.30	2.5%
Mixed/Other Hdws	\$12.23	\$10.71	\$13.90	\$14.08	\$16.58	\$16.34	\$12.40	\$12.53	\$11.73	\$13.43	\$1.70	14.5%
Balsam fir	\$17.25	\$11.54	\$11.83	\$15.84	\$17.33	\$17.39	\$15.94	\$14.12	\$11.81	\$8.13	(\$3.68)	-31.2%
W Spruce	\$21.01	\$19.41	\$23.78	\$22.12	\$24.99	\$27.97	\$23.90	\$24.14	\$20.66	\$17.54	(\$3.12)	-15.1%
B Spruce	\$20.87	\$19.68	\$20.84	\$23.79	\$27.02	\$25.05	\$24.29	\$24.18	\$20.84	\$17.60	(\$3.24)	-15.5%
Tamarack	\$6.30	\$5.17	\$5.54	\$8.09	\$6.26	\$8.17	\$5.98	\$5.73	\$6.72	\$6.17	(\$0.55)	-8.2%
Cedar	\$5.12	\$7.86	\$6.34	\$6.41	\$6.85	\$6.56	\$7.87	\$7.36	\$6.93	\$6.18	(\$0.75)	-10.8%
Jack Pine	\$25.75	\$24.67	\$30.31	\$29.85	\$30.24	\$31.36	\$26.43	\$26.95	\$24.85	\$23.78	(\$1.07)	-4.3%
Red Pine	\$29.02	\$31.93	\$39.42	\$33.71	\$32.52	\$39.03	\$35.95	\$33.14	\$31.62	\$36.67	\$5.05	16.0%
White Pine	\$21.74	\$30.06	\$23.23	\$38.66	\$27.02	\$16.64	\$17.44	\$27.03	\$27.34	\$33.10	\$5.76	21.1%
Hdwd Cd Composite	\$21.81	\$21.37	\$25.77	\$30.17	\$29.91	\$29.99	\$27.27	\$24.40	\$25.52	\$26.73	\$1.21	4.7%
Sftwd Cd Composite	\$21.31	\$20.89	\$22.03	\$23.84	\$24.33	\$26.45	\$23.07	\$23.21	\$21.61	\$21.64	\$0.03	0.1%

a) Combined pulpwood and pulp & bolts products.

2021 Minnesota Public Agencies Stumpage Price Review

Table 3: Statewide average prices received for sawtimber stumpage sold by public agencies in Minnesota, 10-year history.

Sawtimber Products (Nominal \$/Mbf) (a)	2012	2013	2014	2015	2016	2017	2018	2019	2020	2021	21/20 Δ\$YoY	21/20 Δ%YoY
Ash	\$36.12	\$34.06	\$73.41	\$54.17	\$97.67	\$72.20	\$196.37	\$149.81	\$61.14	\$89.96	\$28.82	47.1%
Aspen												
Birch	\$35.70	\$36.97	\$47.04	\$42.84	\$45.24	\$43.00	\$61.23	\$53.33	\$51.69	\$80.54	\$28.85	55.8%
Elm	\$42.45	\$41.41	\$42.19	\$42.50	\$42.54	\$39.77	\$54.75	\$54.07	\$72.91	\$43.99	(\$28.92)	-39.7%
Oak	\$225.36	\$274.54	\$411.34	\$265.54	\$299.03	\$195.16	\$194.63	\$213.20	\$161.13	\$108.64	(\$52.49)	-32.6%
Basswood	\$55.87	\$54.44	\$68.87	\$59.24	\$80.40	\$104.38	\$69.55	\$59.18	\$75.34	\$76.32	\$0.98	1.3%
Maple	\$162.50	\$166.65	\$406.70	\$126.70	\$168.50	\$153.04	\$95.21	\$95.21	\$94.29	\$110.28	\$15.99	17.0%
Mixed/Other Hdws	\$36.88	\$28.56	\$65.40	\$47.87	\$47.04	\$50.28	\$47.30	\$78.78	\$67.78	\$72.59	\$4.81	7.1%
Balsam fir		\$66.51										
W Spruce	\$83.12	\$87.57	\$61.12	\$74.68	\$73.59	\$67.58	\$76.14	\$83.77	\$82.53	\$96.89	\$14.36	17.4%
Cedar												
Jack Pine	\$138.95	\$112.00	\$89.56	\$105.00	\$118.77	\$139.76	\$109.56	\$109.34	\$105.86	\$103.91	(\$1.95)	-1.8%
Red Pine	\$121.15	\$126.48	\$148.33	\$177.16	\$135.87	\$142.72	\$144.41	\$143.27	\$128.10	\$149.11	\$21.01	16.4%
White Pine	\$106.66	\$112.79	\$121.29	\$88.92	\$116.02	\$82.28	\$127.44	\$100.32	\$109.90	\$109.09	(\$0.81)	-0.7%
MBF Composite	\$121.59	\$130.39	\$156.53	\$165.13	\$133.99	\$128.87	\$134.00	\$144.87	\$125.95	\$140.73	\$14.78	11.7%

a) Scribner scale.

Historical Sales Values

In 2021, stumpage sold by public agencies increased to \$44.741 million compared to \$40.659 million 2020, a year-over-year increase of \$4.082 million or 10 percent. (Figure 6, Table 4).

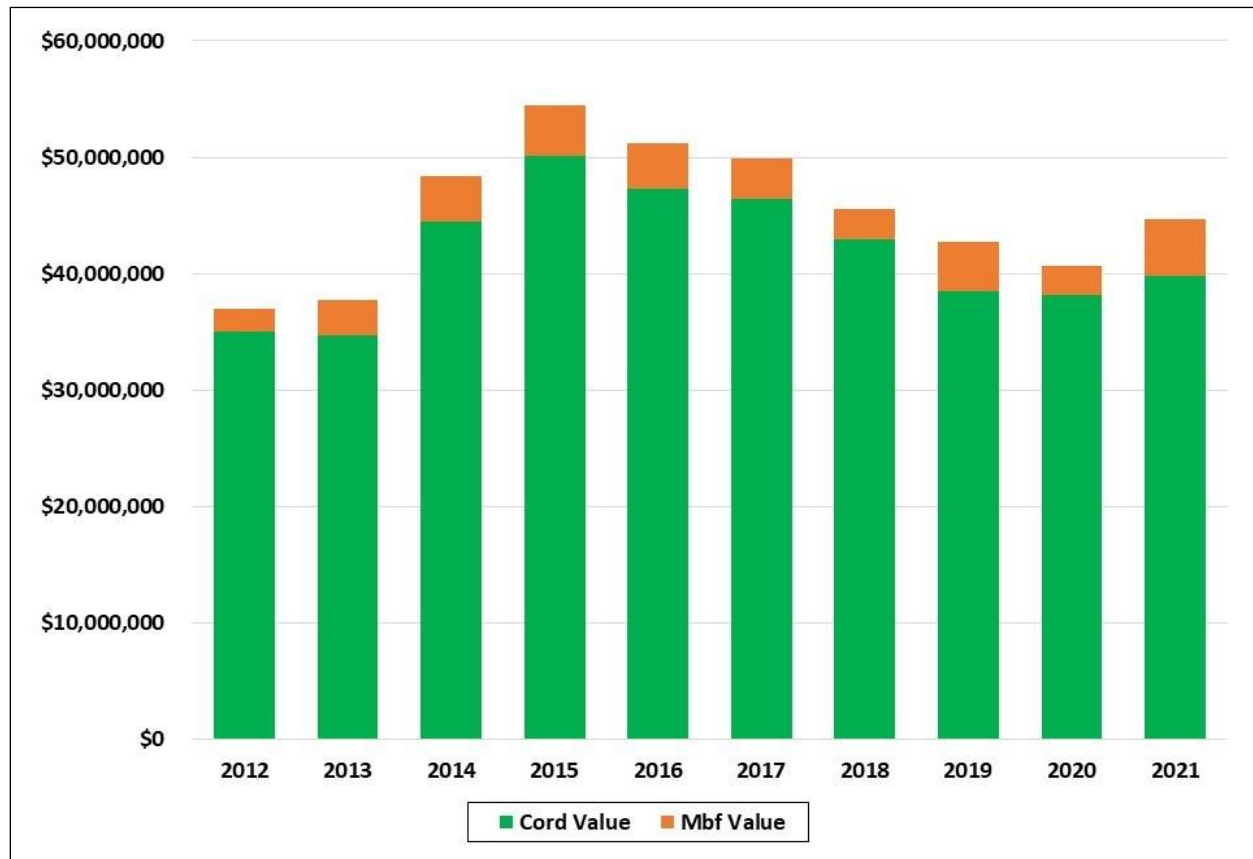


Figure 6: Minnesota public agencies value of cord and sawtimber products sold, 2012-2021. (a)
a) Product categories: sawtimber, pulp & bolts, and pulpwood.

Table 4: Minnesota public agencies stumpage value sold, 2012-2021. (a)

Year	Cord Value	Mbf Value	Total Value	Δ\$ YoY	Δ%YoY
2012	\$35,047,126	\$1,952,204	\$36,999,330	---	---
2013	\$34,731,261	\$3,002,852	\$37,734,113	\$734,783	2.0%
2014	\$44,457,180	\$3,887,081	\$48,344,261	\$10,610,148	28.1%
2015	\$50,112,024	\$4,369,446	\$54,481,471	\$6,137,210	12.7%
2016	\$47,327,421	\$3,898,130	\$51,225,551	(\$3,255,920)	-6.0%
2017	\$46,464,399	\$3,479,238	\$49,943,637	(\$1,281,915)	-2.5%
2018	\$42,903,113	\$2,624,607	\$45,527,720	(\$4,415,916)	-8.8%
2019	\$38,490,782	\$4,220,263	\$42,711,044	(\$2,816,676)	-6.2%
2020	\$38,153,471	\$2,505,732	\$40,659,203	(\$2,051,841)	-4.8%
2021	\$39,823,145	\$4,918,211	\$44,741,356	\$4,082,153	10.0%

a) Product categories: sawtimber, pulp & bolts, and pulpwood.

Historical Sales Volumes

In 2021, Minnesota public agencies sold 1,634,810 cord equivalents of sawtimber, pulp & bolts, and pulpwood compared to sales of 1,604,238 cord equivalents in 2020, a sales volume increase of 30,573 cord equivalents or 1.9 percent year-over-year (Figure 7, Table 5, page 10). In 2021, aspen/balm of Gilead sold volume increased to 892,181 cords from 808,412 cords in 2020, an 83,769-cord or 10.4 percent increase year-over-year. In 2021, pine volume sold increased to 238,090 cord equivalents from 211,770 cord equivalents in 2020, a 26,320-cord or 12.4 percent increase. In 2021, spruce volume sold decreased to 112,704 cord equivalents from 161,935 cord equivalents in 2020, a 49,230-cord or 30.4 percent decrease.

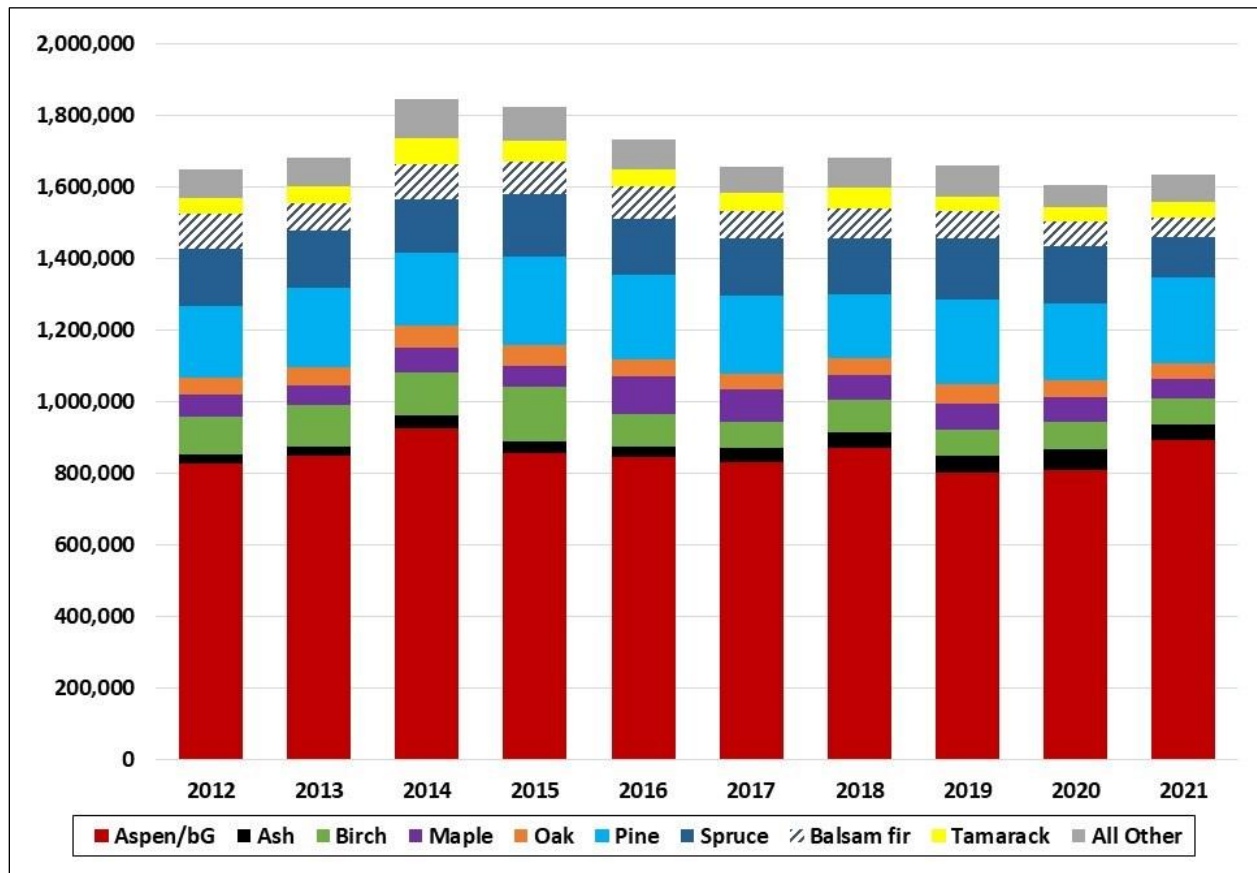


Figure 7: All public agencies volume sold by species group, 2012-2021. (a)
a) Product categories: sawtimber, pulp & bolts, and pulpwood.

Table 5: Minnesota public agencies volume sold by species group in cord equivalents, 2012-2021. (a)

Year	Aspen/bG	Ash	Birch	Maple	Oak	Pine	Spruce	Balsam fir	Tamarack	All Other	Total Sold
2012	826,340	24,979	107,629	60,741	48,525	199,581	160,322	97,256	43,303	81,381	1,650,055
2013	849,626	25,730	114,661	55,874	51,912	220,209	160,644	75,940	45,471	81,498	1,681,563
2014	927,010	32,801	122,493	67,117	62,050	202,962	152,298	95,889	71,717	110,434	1,844,771
2015	855,460	32,223	153,171	59,020	59,129	247,082	174,975	88,934	59,133	95,955	1,825,081
2016	845,524	30,523	89,247	105,016	47,710	234,485	159,245	89,715	47,926	83,316	1,732,707
2017	830,713	38,434	75,171	90,992	44,143	217,267	158,623	77,439	50,127	74,922	1,657,831
2018	869,353	45,762	88,672	72,080	44,965	178,919	156,359	84,440	56,198	85,993	1,682,741
2019	800,258	47,100	73,902	71,450	56,122	237,315	168,165	76,970	40,868	87,666	1,659,817
2020	808,412	57,387	78,960	67,231	48,980	211,770	161,935	68,331	40,214	61,018	1,604,238
2021	892,181	44,496	70,752	54,157	46,455	238,090	112,704	54,985	44,335	76,656	1,634,810
21/20 Δ\$	83,769	(12,892)	(8,209)	(13,074)	(2,525)	26,320	(49,230)	(13,346)	4,121	15,638	30,573
21/20 Δ%	10.4%	-22.5%	-10.4%	-19.4%	-5.2%	12.4%	-30.4%	-19.5%	10.2%	25.6%	1.9%

a) Product categories: sawtimber, pulp & bolts, and pulpwood.

Data and Methods

This report presents average stumpage prices received by all Minnesota public agencies for the following product classifications: sawtimber, pulp & bolts, pulpwood, fuelwood, and biomass. All data are self-reported by individual agency representatives facilitated by a DNR-led survey. Price and volume data and summary analyses presented in this report may be useful for determining the total volume and value of stumpage sold and for comparing relative volumes and values of stumpage sold over time.

DISCLAIMER—Public agencies follow different fiscal years and there is some variability in product specifications, e.g. sawtimber, pulp & bolts, pulpwood, fuelwood, and biomass.

The reporting period for each agency is included as part of the agencies information. The fiscal year used by the counties is the calendar year. The state's (Minnesota DNR Forestry) fiscal year runs from July 1 to June 30. To make the data reported more consistent with the other agencies, state data included in the report is for **CY2021**. Federal agencies (USFS and BIA) fiscal year runs from October 1 – September 30. However, USDI-BIA data is reported by calendar year.

Federal agencies softwood sawtimber specifications include bolts to a six-inch top dib and hardwood bolts to an eight-inch top dib. Virtually all other agencies report pulp and bolts as a standalone product category for species that are frequently purchased by sawmills. Self-reported product category volumes and values are “normalized”, at the discretion of the state forest economist, to account for variability in self-reported product specifications. In addition, some agencies report their data based on timber appraisal estimates from timber sales sold while others report based on actual scale receipts from timber harvested and scaled. The reporting basis for each agency is noted in the report.

The reader should use caution when comparing the prices shown in this report with actual prices received or expected on a specific timber sale. Individual sale prices may vary significantly (± 30 percent or more) from the averages shown in this report due to variability in local markets, road access costs, haul distance, sale/site specific conditions, and operational constraints.

Conversion Factors

One thousand board feet (Mbf) = 2 cords.

One cord mixed species = 2.3 green tons (average 50 percent aspen).

Definitions

Average price—volume weighted average, equals total value divided by total volume for each listed species group and product classification.

Biomass—dead trees and logging residues including tops, limbs, and cull reported in green tons.

Board foot—a piece of wood 1” thick by 12” long by 12” wide.

Bolt—short length log, in the Lake States usually 100” in length with minimum 6” top dib. Depending on species and quality, may be suitable for the production of dimensional lumber (2x4s), industrial grade lumber (pallets), for manufacturing turned forest products, or for peeling.

Inflation Index—base year 2000=100, indexed to general price changes as measured by the Implicit Price Deflator for Gross Domestic Product (GDP) compiled by the U.S. Department of Commerce, Bureau of Economic Analysis.

Cord (Standard)—cubic volume measure 4-feet wide by 4-feet high by 8-feet in length, or equivalent containing 128 cubic feet of well stacked roundwood, including bark and air space, with an average of 79 cubic feet of solid wood. By state statute, fuelwood is measured in standard cords.

Cord (100-inch)—cubic volume measure 4-feet wide by 4-feet high by 8.3-feet (100-inch) in length, or equivalent containing 133.3 cubic feet of well stacked roundwood, including bark and air space, with an average of 82.3 cubic feet solid wood. In Minnesota, the vast majority of roundwood products are cut to 100-inch in length.

Mbf—one thousand board feet; stumpage volume measured using Scribner log or tree scale.

Mbf Composite Price Index—base year 2000=100, volume weighted (total all-species MBF value divided by total all-species MBF volume) sawtimber price index.

MMbf—one million board feet; stumpage volume measured using Scribner log or tree scale.

Pulpwood—stem suitable for fiber used for paper and oriented strand board (OSB) manufacturing.

Pulp & Bolts—stem containing the mixed products of pulpwood and bolts.

Sawtimber—stem suitable for production of cants, crossties, dimension lumber, graded boards, or ungraded boards.

Stumpage—value paid to a landowner to harvest standing timber.

Contact

Don Deckard, Ph.D., State Forest Economist
MNDNR Division of Forestry
500 Lafayette Road North
Saint Paul, Minnesota 55155-4044
Desk: (651) 259-5287
Email: donald.deckard@state.mn.us

The following tables were produced using Microsoft Access reporting tools.

2021 All Public Agencies Average Sold Prices Summary

All Agencies		Reporting Period: Multiple				Reporting Basis: Multiple				
Species Name	Sawtimber		Pulp and Bolts		Pulpwood		Fuelwood		Biomass	
	MBF	Avg Price	Cords	Avg Price	Cords	Avg Price	Cords	Avg Price	Tons	Avg Price
Aspen	0.0	\$0.00	0.0	\$0.00	858,809.8	\$30.73	5.0	\$2.50	0.0	\$0.00
Balm of Gilead	0.0	\$0.00	25.0	\$42.60	33,346.2	\$26.25	0.0	\$0.00	0.0	\$0.00
Birch Species	17.9	\$80.54	31,380.9	\$17.28	39,334.8	\$8.82	181.1	\$2.81	0.0	\$0.00
Ash Species	10.9	\$89.96	24,128.6	\$10.32	20,345.3	\$6.75	63.9	\$3.38	0.0	\$0.00
Elm Species	2.8	\$43.99	5.7	\$15.00	187.2	\$7.74	0.0	\$0.00	0.0	\$0.00
Oak Species	544.1	\$108.64	39,930.8	\$29.63	5,436.4	\$15.02	350.2	\$3.63	0.0	\$0.00
Basswood	459.1	\$76.32	23,366.8	\$12.89	3,623.0	\$7.67	86.4	\$4.15	0.0	\$0.00
Mixed/Other Hdws	7.4	\$72.59	22,627.0	\$16.13	13,489.0	\$8.90	512.9	\$4.41	0.0	\$0.00
Balsam fir	0.0	\$0.00	14,892.7	\$12.03	40,092.2	\$6.68	129.4	\$1.28	0.0	\$0.00
White Spruce	58.0	\$96.89	22,425.1	\$19.62	10,759.8	\$13.22	116.6	\$2.00	0.0	\$0.00
Black Spruce	0.0	\$0.00	1,676.5	\$28.23	77,726.8	\$17.38	21.6	\$2.50	0.0	\$0.00
Tamarack	0.0	\$0.00	7,423.7	\$7.27	36,911.2	\$5.94	4,055.1	\$2.03	0.0	\$0.00
White Cedar	0.0	\$0.00	1,055.2	\$10.77	6,124.9	\$5.39	0.0	\$0.00	0.0	\$0.00
Jack Pine	4,326.0	\$103.91	33,358.2	\$24.78	2,051.6	\$7.51	508.2	\$2.43	0.0	\$0.00
Red Pine	28,619.9	\$149.11	116,747.5	\$39.81	13,522.6	\$9.52	1,826.1	\$1.62	0.0	\$0.00
White Pine	818.9	\$109.09	4,855.6	\$33.24	24.8	\$5.99	0.0	\$0.00	0.0	\$0.00
Maple Species	82.8	\$110.28	18,661.4	\$16.22	35,330.0	\$9.96	0.0	\$0.00	0.0	\$0.00
Mixed Species	0.0	\$0.00	691.0	\$8.68	4,547.3	\$2.89	196.0	\$1.98	18,141.2	\$0.80
All Agencies All Species	34,947.8	\$140.73	363,251.7	\$25.65	1,201,662.9	\$25.39	8,052.5	\$2.22	18,141.2	\$0.80

Average Sale Prices Reported by Agency

MINNESOTA COUNTIES 2021

Agency Name: Aikin Co.			Reporting Period: 01/21 to 12/21				Reporting Basis: Appraisal Reports			
Species Name	Sawtimber		Pulp and Bolts		Pulpwood		Fuelwood		Biomass	
	MBF	Avg Price	Cords	Avg Price	Cords	Avg Price	Cords	Avg Price	Tons	Avg Price
Aspen	0.0	\$0.00	0.0	\$0.00	19,549.0	\$35.56	0.0	\$0.00	0.0	\$0.00
Balm of Gilead	0.0	\$0.00	25.0	\$42.60	0.0	\$0.00	0.0	\$0.00	0.0	\$0.00
Birch Species	0.0	\$0.00	2,134.0	\$11.39	33.0	\$8.35	0.0	\$0.00	0.0	\$0.00
Ash Species	0.0	\$0.00	2,040.0	\$8.19	90.0	\$8.00	10.0	\$4.00	0.0	\$0.00
Elm Species	0.0	\$0.00	0.0	\$0.00	0.0	\$0.00	0.0	\$0.00	0.0	\$0.00
Oak Species	46.0	\$58.48	3,385.0	\$20.85	0.0	\$0.00	0.0	\$0.00	0.0	\$0.00
Basswood	30.0	\$55.50	1,881.0	\$9.80	0.0	\$0.00	0.0	\$0.00	0.0	\$0.00
Mixed/Other Hdwds	0.0	\$0.00	4,976.0	\$11.72	979.0	\$10.16	129.0	\$6.55	0.0	\$0.00
Balsam fir	0.0	\$0.00	240.0	\$20.53	0.0	\$0.00	0.0	\$0.00	0.0	\$0.00
White Spruce	0.0	\$0.00	585.0	\$15.47	0.0	\$0.00	0.0	\$0.00	0.0	\$0.00
Black Spruce	0.0	\$0.00	0.0	\$0.00	15.0	\$12.00	0.0	\$0.00	0.0	\$0.00
Tamarack	0.0	\$0.00	0.0	\$0.00	10.0	\$6.00	0.0	\$0.00	0.0	\$0.00
White Cedar	0.0	\$0.00	0.0	\$0.00	0.0	\$0.00	0.0	\$0.00	0.0	\$0.00
Jack Pine	0.0	\$0.00	40.0	\$18.50	0.0	\$0.00	0.0	\$0.00	0.0	\$0.00
Red Pine	0.0	\$0.00	390.0	\$37.36	0.0	\$0.00	0.0	\$0.00	0.0	\$0.00
White Pine	0.0	\$0.00	10.0	\$21.75	0.0	\$0.00	0.0	\$0.00	0.0	\$0.00
Maple Species	0.0	\$0.00	5,869.0	\$12.32	0.0	\$0.00	0.0	\$0.00	0.0	\$0.00
Mixed Species	0.0	\$0.00	0.0	\$0.00	0.0	\$0.00	0.0	\$0.00	0.0	\$0.00
Aikin Co. All Species	76.0	\$57.30	21,575.0	\$13.50	20,676.0	\$34.16	139.0	\$6.37	0.0	\$0.00

2021 Minnesota Public Agencies Stumpage Price Review

Agency Name: Becker Co.

Reporting Period:01/21 to 12/21

Reporting Basis:Appraisal Reports

Species Name	Sawtimber		Pulp and Bolts		Pulpwood		Fuelwood		Biomass	
	MBF	Avg Price	Cords	Avg Price	Cords	Avg Price	Cords	Avg Price	Tons	Avg Price
Aspen	0.0	\$0.00	0.0	\$0.00	7,625.0	\$32.76	0.0	\$0.00	0.0	\$0.00
Balm of Gilead	0.0	\$0.00	0.0	\$0.00	0.0	\$0.00	0.0	\$0.00	0.0	\$0.00
Birch Species	0.0	\$0.00	1,847.0	\$14.21	0.0	\$0.00	0.0	\$0.00	0.0	\$0.00
Ash Species	0.0	\$0.00	0.0	\$0.00	0.0	\$0.00	0.0	\$0.00	0.0	\$0.00
Elm Species	0.0	\$0.00	0.0	\$0.00	0.0	\$0.00	0.0	\$0.00	0.0	\$0.00
Oak Species	0.0	\$0.00	565.0	\$27.89	0.0	\$0.00	0.0	\$0.00	0.0	\$0.00
Basswood	0.0	\$0.00	0.0	\$0.00	0.0	\$0.00	0.0	\$0.00	0.0	\$0.00
Mixed/Other Hdws	0.0	\$0.00	68.0	\$11.86	0.0	\$0.00	0.0	\$0.00	0.0	\$0.00
Balsam fir	0.0	\$0.00	125.0	\$8.29	0.0	\$0.00	0.0	\$0.00	0.0	\$0.00
White Spruce	0.0	\$0.00	60.0	\$12.67	0.0	\$0.00	0.0	\$0.00	0.0	\$0.00
Black Spruce	0.0	\$0.00	0.0	\$0.00	0.0	\$0.00	0.0	\$0.00	0.0	\$0.00
Tamarack	0.0	\$0.00	0.0	\$0.00	0.0	\$0.00	0.0	\$0.00	0.0	\$0.00
White Cedar	0.0	\$0.00	0.0	\$0.00	0.0	\$0.00	0.0	\$0.00	0.0	\$0.00
Jack Pine	0.0	\$0.00	1,558.0	\$13.23	0.0	\$0.00	0.0	\$0.00	0.0	\$0.00
Red Pine	0.0	\$0.00	1,284.0	\$23.34	0.0	\$0.00	0.0	\$0.00	0.0	\$0.00
White Pine	0.0	\$0.00	0.0	\$0.00	0.0	\$0.00	0.0	\$0.00	0.0	\$0.00
Maple Species	0.0	\$0.00	0.0	\$0.00	0.0	\$0.00	0.0	\$0.00	0.0	\$0.00
Mixed Species	0.0	\$0.00	0.0	\$0.00	0.0	\$0.00	0.0	\$0.00	0.0	\$0.00
Becker Co. All Species	0.0	\$0.00	5,507.0	\$17.28	7,625.0	\$32.76	0.0	\$0.00	0.0	\$0.00

2021 Minnesota Public Agencies Stumpage Price Review

Agency Name: Beltrami Co.

Reporting Period: 01/21 to 12/21

Reporting Basis: Appraisal Reports

Species Name	Sawtimber		Pulp and Bolts		Pulpwood		Fuelwood		Biomass	
	MBF	Avg Price	Cords	Avg Price	Cords	Avg Price	Cords	Avg Price	Tons	Avg Price
Aspen	0.0	\$0.00	0.0	\$0.00	14,647.0	\$38.32	0.0	\$0.00	0.0	\$0.00
Balm of Gilead	0.0	\$0.00	0.0	\$0.00	474.0	\$36.24	0.0	\$0.00	0.0	\$0.00
Birch Species	0.0	\$0.00	1,366.0	\$14.08	380.0	\$10.56	0.0	\$0.00	0.0	\$0.00
Ash Species	0.0	\$0.00	0.0	\$0.00	503.0	\$11.09	0.0	\$0.00	0.0	\$0.00
Elm Species	0.0	\$0.00	0.0	\$0.00	0.0	\$0.00	0.0	\$0.00	0.0	\$0.00
Oak Species	0.0	\$0.00	100.0	\$17.80	546.0	\$16.91	0.0	\$0.00	0.0	\$0.00
Basswood	0.0	\$0.00	2,017.0	\$14.57	0.0	\$0.00	0.0	\$0.00	0.0	\$0.00
Mixed/Other Hdws	0.0	\$0.00	730.0	\$12.04	350.0	\$2.50	0.0	\$0.00	0.0	\$0.00
Balsam fir	0.0	\$0.00	222.0	\$10.40	582.0	\$9.08	0.0	\$0.00	0.0	\$0.00
White Spruce	0.0	\$0.00	200.0	\$11.40	77.0	\$10.14	0.0	\$0.00	0.0	\$0.00
Black Spruce	0.0	\$0.00	0.0	\$0.00	205.0	\$5.41	0.0	\$0.00	0.0	\$0.00
Tamarack	0.0	\$0.00	0.0	\$0.00	2,040.0	\$4.89	0.0	\$0.00	0.0	\$0.00
White Cedar	0.0	\$0.00	0.0	\$0.00	0.0	\$0.00	0.0	\$0.00	0.0	\$0.00
Jack Pine	0.0	\$0.00	1,858.0	\$19.93	146.0	\$11.11	0.0	\$0.00	0.0	\$0.00
Red Pine	1,409.1	\$133.00	2,083.6	\$40.29	1,352.0	\$12.07	0.0	\$0.00	0.0	\$0.00
White Pine	39.0	\$97.74	40.4	\$27.33	0.0	\$0.00	0.0	\$0.00	0.0	\$0.00
Maple Species	0.0	\$0.00	1,058.0	\$14.61	0.0	\$0.00	0.0	\$0.00	0.0	\$0.00
Mixed Species	0.0	\$0.00	0.0	\$0.00	373.0	\$4.49	0.0	\$0.00	0.0	\$0.00
Beltrami Co. All Species	1,448.1	\$132.05	9,675.0	\$20.81	21,675.0	\$29.29	0.0	\$0.00	0.0	\$0.00

Agency Name: Carlton Co.**Reporting Period: 01/21 to 12/21****Reporting Basis: Appraisal Reports**

<u>Species Name</u>	Sawtimber		Pulp and Bolts		Pulpwood		Fuelwood		Biomass	
	<u>MBF</u>	<u>Avg Price</u>	<u>Cords</u>	<u>Avg Price</u>	<u>Cords</u>	<u>Avg Price</u>	<u>Cords</u>	<u>Avg Price</u>	<u>Tons</u>	<u>Avg Price</u>
Aspen	0.0	\$0.00	0.0	\$0.00	8,960.0	\$31.34	0.0	\$0.00	0.0	\$0.00
Balm of Gilead	0.0	\$0.00	0.0	\$0.00	0.0	\$0.00	0.0	\$0.00	0.0	\$0.00
Birch Species	0.0	\$0.00	610.0	\$21.80	0.0	\$0.00	0.0	\$0.00	0.0	\$0.00
Ash Species	0.0	\$0.00	0.0	\$0.00	0.0	\$0.00	0.0	\$0.00	0.0	\$0.00
Elm Species	0.0	\$0.00	0.0	\$0.00	0.0	\$0.00	0.0	\$0.00	0.0	\$0.00
Oak Species	0.0	\$0.00	0.0	\$0.00	0.0	\$0.00	0.0	\$0.00	0.0	\$0.00
Basswood	0.0	\$0.00	0.0	\$0.00	0.0	\$0.00	0.0	\$0.00	0.0	\$0.00
Mixed/Other Hdws	0.0	\$0.00	2,310.0	\$16.40	0.0	\$0.00	0.0	\$0.00	0.0	\$0.00
Balsam fir	0.0	\$0.00	0.0	\$0.00	10.0	\$10.00	0.0	\$0.00	0.0	\$0.00
White Spruce	0.0	\$0.00	0.0	\$0.00	50.0	\$10.00	0.0	\$0.00	0.0	\$0.00
Black Spruce	0.0	\$0.00	0.0	\$0.00	0.0	\$0.00	0.0	\$0.00	0.0	\$0.00
Tamarack	0.0	\$0.00	0.0	\$0.00	0.0	\$0.00	0.0	\$0.00	0.0	\$0.00
White Cedar	0.0	\$0.00	0.0	\$0.00	0.0	\$0.00	0.0	\$0.00	0.0	\$0.00
Jack Pine	0.0	\$0.00	0.0	\$0.00	0.0	\$0.00	0.0	\$0.00	0.0	\$0.00
Red Pine	0.0	\$0.00	805.0	\$36.25	0.0	\$0.00	0.0	\$0.00	0.0	\$0.00
White Pine	0.0	\$0.00	0.0	\$0.00	0.0	\$0.00	0.0	\$0.00	0.0	\$0.00
Maple Species	0.0	\$0.00	0.0	\$0.00	10.0	\$10.00	0.0	\$0.00	0.0	\$0.00
Mixed Species	0.0	\$0.00	0.0	\$0.00	0.0	\$0.00	0.0	\$0.00	0.0	\$0.00
Carlton Co. All Species	0.0	\$0.00	3,725.0	\$21.58	9,030.0	\$31.18	0.0	\$0.00	0.0	\$0.00

2021 Minnesota Public Agencies Stumpage Price Review

Agency Name: Cass Co.

Reporting Period: 01/21 to 12/21

Reporting Basis: Appraisal Reports

<u>Species Name</u>	Sawtimber		Pulp and Bolts		Pulpwood		Fuelwood		Biomass	
	<u>MBF</u>	<u>Avg Price</u>	<u>Cords</u>	<u>Avg Price</u>	<u>Cords</u>	<u>Avg Price</u>	<u>Cords</u>	<u>Avg Price</u>	<u>Tons</u>	<u>Avg Price</u>
Aspen	0.0	\$0.00	0.0	\$0.00	31,689.0	\$37.06	0.0	\$0.00	0.0	\$0.00
Balm of Gilead	0.0	\$0.00	0.0	\$0.00	40.0	\$11.30	0.0	\$0.00	0.0	\$0.00
Birch Species	0.0	\$0.00	3,881.0	\$19.53	0.0	\$0.00	0.0	\$0.00	0.0	\$0.00
Ash Species	0.0	\$0.00	1,269.0	\$13.85	0.0	\$0.00	0.0	\$0.00	0.0	\$0.00
Elm Species	0.0	\$0.00	0.0	\$0.00	0.0	\$0.00	0.0	\$0.00	0.0	\$0.00
Oak Species	0.0	\$0.00	10,176.0	\$43.56	0.0	\$0.00	0.0	\$0.00	0.0	\$0.00
Basswood	0.0	\$0.00	1,511.0	\$18.53	0.0	\$0.00	0.0	\$0.00	0.0	\$0.00
Mixed/Other Hdws	0.0	\$0.00	683.0	\$17.22	0.0	\$0.00	260.0	\$2.50	0.0	\$0.00
Balsam fir	0.0	\$0.00	0.0	\$0.00	231.0	\$8.41	0.0	\$0.00	0.0	\$0.00
White Spruce	0.0	\$0.00	278.0	\$20.56	0.0	\$0.00	0.0	\$0.00	0.0	\$0.00
Black Spruce	0.0	\$0.00	0.0	\$0.00	0.0	\$0.00	0.0	\$0.00	0.0	\$0.00
Tamarack	0.0	\$0.00	0.0	\$0.00	1,970.0	\$4.87	0.0	\$0.00	0.0	\$0.00
White Cedar	0.0	\$0.00	0.0	\$0.00	0.0	\$0.00	0.0	\$0.00	0.0	\$0.00
Jack Pine	0.0	\$0.00	2,315.0	\$33.14	0.0	\$0.00	0.0	\$0.00	0.0	\$0.00
Red Pine	1,908.5	\$175.13	0.0	\$0.00	0.0	\$0.00	0.0	\$0.00	0.0	\$0.00
White Pine	0.0	\$0.00	0.0	\$0.00	0.0	\$0.00	0.0	\$0.00	0.0	\$0.00
Maple Species	0.0	\$0.00	2,617.0	\$17.89	0.0	\$0.00	0.0	\$0.00	0.0	\$0.00
Mixed Species	0.0	\$0.00	0.0	\$0.00	0.0	\$0.00	0.0	\$0.00	0.0	\$0.00
Cass Co. All Species	1,908.5	\$175.13	22,730.0	\$31.05	33,930.0	\$34.97	260.0	\$2.50	0.0	\$0.00

2021 Minnesota Public Agencies Stumpage Price Review

Agency Name: Clearwater Co.

Reporting Period: 01/21 to 12/21

Reporting Basis: Appraisal Reports

<u>Species Name</u>	Sawtimber		Pulp and Bolts		Pulpwood		Fuelwood		Biomass	
	<u>MBF</u>	<u>Avg Price</u>	<u>Cords</u>	<u>Avg Price</u>	<u>Cords</u>	<u>Avg Price</u>	<u>Cords</u>	<u>Avg Price</u>	<u>Tons</u>	<u>Avg Price</u>
Aspen	0.0	\$0.00	0.0	\$0.00	7,120.0	\$30.97	0.0	\$0.00	0.0	\$0.00
Balm of Gilead	0.0	\$0.00	0.0	\$0.00	0.0	\$0.00	0.0	\$0.00	0.0	\$0.00
Birch Species	17.8	\$80.73	0.0	\$0.00	1,538.0	\$15.11	0.0	\$0.00	0.0	\$0.00
Ash Species	9.7	\$84.97	0.0	\$0.00	0.0	\$0.00	0.0	\$0.00	0.0	\$0.00
Elm Species	0.0	\$0.00	0.0	\$0.00	0.0	\$0.00	0.0	\$0.00	0.0	\$0.00
Oak Species	431.9	\$77.12	0.0	\$0.00	2,683.0	\$15.25	0.0	\$0.00	0.0	\$0.00
Basswood	424.8	\$77.78	1,534.0	\$15.02	0.0	\$0.00	0.0	\$0.00	0.0	\$0.00
Mixed/Other Hdws	0.0	\$0.00	402.0	\$15.44	0.0	\$0.00	0.0	\$0.00	0.0	\$0.00
Balsam fir	0.0	\$0.00	0.0	\$0.00	0.0	\$0.00	0.0	\$0.00	0.0	\$0.00
White Spruce	0.0	\$0.00	0.0	\$0.00	0.0	\$0.00	0.0	\$0.00	0.0	\$0.00
Black Spruce	0.0	\$0.00	0.0	\$0.00	111.0	\$11.90	0.0	\$0.00	0.0	\$0.00
Tamarack	0.0	\$0.00	20.4	\$10.50	1,034.0	\$7.00	0.0	\$0.00	0.0	\$0.00
White Cedar	0.0	\$0.00	0.0	\$0.00	0.0	\$0.00	0.0	\$0.00	0.0	\$0.00
Jack Pine	0.0	\$0.00	0.0	\$0.00	0.0	\$0.00	0.0	\$0.00	0.0	\$0.00
Red Pine	106.8	\$112.93	0.0	\$0.00	16.0	\$16.78	0.0	\$0.00	0.0	\$0.00
White Pine	286.0	\$120.20	0.0	\$0.00	0.0	\$0.00	0.0	\$0.00	0.0	\$0.00
Maple Species	70.1	\$73.57	0.0	\$0.00	1,048.0	\$15.01	0.0	\$0.00	0.0	\$0.00
Mixed Species	0.0	\$0.00	0.0	\$0.00	0.0	\$0.00	0.0	\$0.00	0.0	\$0.00
Clearwater Co. All Species	1,347.1	\$89.23	1,956.4	\$15.06	13,550.0	\$22.82	0.0	\$0.00	0.0	\$0.00

2021 Minnesota Public Agencies Stumpage Price Review

Agency Name: Crow Wing Co.

Reporting Period: 01/21 to 12/21

Reporting Basis: Appraisal Reports

Species Name	Sawtimber		Pulp and Bolts		Pulpwood		Fuelwood		Biomass	
	MBF	Avg Price	Cords	Avg Price	Cords	Avg Price	Cords	Avg Price	Tons	Avg Price
Aspen	0.0	\$0.00	0.0	\$0.00	15,620.0	\$34.47	0.0	\$0.00	0.0	\$0.00
Balm of Gilead	0.0	\$0.00	0.0	\$0.00	0.0	\$0.00	0.0	\$0.00	0.0	\$0.00
Birch Species	0.0	\$0.00	1,810.0	\$19.44	0.0	\$0.00	0.0	\$0.00	0.0	\$0.00
Ash Species	0.0	\$0.00	635.0	\$12.04	0.0	\$0.00	0.0	\$0.00	0.0	\$0.00
Elm Species	0.0	\$0.00	0.0	\$0.00	0.0	\$0.00	0.0	\$0.00	0.0	\$0.00
Oak Species	0.0	\$0.00	3,980.0	\$21.20	355.0	\$20.14	0.0	\$0.00	0.0	\$0.00
Basswood	0.0	\$0.00	1,975.0	\$15.54	0.0	\$0.00	0.0	\$0.00	0.0	\$0.00
Mixed/Other Hdws	0.0	\$0.00	510.0	\$13.98	0.0	\$0.00	0.0	\$0.00	0.0	\$0.00
Balsam fir	0.0	\$0.00	0.0	\$0.00	0.0	\$0.00	105.0	\$1.00	0.0	\$0.00
White Spruce	0.0	\$0.00	0.0	\$0.00	10.0	\$12.00	0.0	\$0.00	0.0	\$0.00
Black Spruce	0.0	\$0.00	0.0	\$0.00	0.0	\$0.00	0.0	\$0.00	0.0	\$0.00
Tamarack	0.0	\$0.00	0.0	\$0.00	0.0	\$0.00	0.0	\$0.00	0.0	\$0.00
White Cedar	0.0	\$0.00	0.0	\$0.00	0.0	\$0.00	0.0	\$0.00	0.0	\$0.00
Jack Pine	0.0	\$0.00	60.0	\$23.00	0.0	\$0.00	0.0	\$0.00	0.0	\$0.00
Red Pine	1,490.0	\$184.58	0.0	\$0.00	0.0	\$0.00	0.0	\$0.00	0.0	\$0.00
White Pine	167.5	\$103.50	0.0	\$0.00	0.0	\$0.00	0.0	\$0.00	0.0	\$0.00
Maple Species	0.0	\$0.00	0.0	\$0.00	2,590.0	\$11.78	0.0	\$0.00	0.0	\$0.00
Mixed Species	0.0	\$0.00	0.0	\$0.00	0.0	\$0.00	0.0	\$0.00	3,069.0	\$1.00
Crow Wing Co. All Species	1,657.5	\$176.38	8,970.0	\$18.55	18,575.0	\$31.02	105.0	\$1.00	3,069.0	\$1.00

2021 Minnesota Public Agencies Stumpage Price Review

Agency Name: Hubbard Co.

Reporting Period: 01/21 to 12/21

Reporting Basis: Appraisal Reports

Species Name	Sawtimber		Pulp and Bolts		Pulpwood		Fuelwood		Biomass	
	MBF	Avg Price	Cords	Avg Price	Cords	Avg Price	Cords	Avg Price	Tons	Avg Price
Aspen	0.0	\$0.00	0.0	\$0.00	31,237.0	\$38.83	0.0	\$0.00	0.0	\$0.00
Balm of Gilead	0.0	\$0.00	0.0	\$0.00	0.0	\$0.00	0.0	\$0.00	0.0	\$0.00
Birch Species	0.0	\$0.00	0.0	\$0.00	3,196.0	\$11.11	0.0	\$0.00	0.0	\$0.00
Ash Species	0.0	\$0.00	0.0	\$0.00	120.0	\$2.79	0.0	\$0.00	0.0	\$0.00
Elm Species	0.0	\$0.00	0.0	\$0.00	0.0	\$0.00	0.0	\$0.00	0.0	\$0.00
Oak Species	0.0	\$0.00	996.0	\$18.25	0.0	\$0.00	0.0	\$0.00	0.0	\$0.00
Basswood	0.0	\$0.00	0.0	\$0.00	771.0	\$5.40	0.0	\$0.00	0.0	\$0.00
Mixed/Other Hdws	0.0	\$0.00	0.0	\$0.00	0.0	\$0.00	0.0	\$0.00	0.0	\$0.00
Balsam fir	0.0	\$0.00	210.0	\$12.53	0.0	\$0.00	0.0	\$0.00	0.0	\$0.00
White Spruce	55.0	\$97.73	140.0	\$37.27	0.0	\$0.00	0.0	\$0.00	0.0	\$0.00
Black Spruce	0.0	\$0.00	0.0	\$0.00	0.0	\$0.00	0.0	\$0.00	0.0	\$0.00
Tamarack	0.0	\$0.00	0.0	\$0.00	0.0	\$0.00	0.0	\$0.00	0.0	\$0.00
White Cedar	0.0	\$0.00	0.0	\$0.00	0.0	\$0.00	0.0	\$0.00	0.0	\$0.00
Jack Pine	0.0	\$0.00	1,470.0	\$35.77	55.0	\$10.17	0.0	\$0.00	0.0	\$0.00
Red Pine	0.0	\$0.00	1,785.0	\$47.05	0.0	\$0.00	0.0	\$0.00	0.0	\$0.00
White Pine	60.0	\$110.26	0.0	\$0.00	0.0	\$0.00	0.0	\$0.00	0.0	\$0.00
Maple Species	0.0	\$0.00	0.0	\$0.00	765.0	\$7.32	0.0	\$0.00	0.0	\$0.00
Mixed Species	0.0	\$0.00	0.0	\$0.00	0.0	\$0.00	0.0	\$0.00	0.0	\$0.00
Hubbard Co. All Species	115.0	\$104.27	4,601.0	\$35.34	36,144.0	\$34.84	0.0	\$0.00	0.0	\$0.00

2021 Minnesota Public Agencies Stumpage Price Review

Agency Name: Itasca Co.

Reporting Period: 01/21 to 12/21

Reporting Basis: Appraisal Reports

Species Name	Sawtimber		Pulp and Bolts		Pulpwood		Fuelwood		Biomass	
	MBF	Avg Price	Cords	Avg Price	Cords	Avg Price	Cords	Avg Price	Tons	Avg Price
Aspen	0.0	\$0.00	0.0	\$0.00	53,107.0	\$35.06	0.0	\$0.00	0.0	\$0.00
Balm of Gilead	0.0	\$0.00	0.0	\$0.00	1,255.0	\$22.75	0.0	\$0.00	0.0	\$0.00
Birch Species	0.0	\$0.00	0.0	\$0.00	1,512.0	\$10.44	0.0	\$0.00	0.0	\$0.00
Ash Species	0.0	\$0.00	2,083.0	\$13.28	0.0	\$0.00	0.0	\$0.00	0.0	\$0.00
Elm Species	0.0	\$0.00	0.0	\$0.00	0.0	\$0.00	0.0	\$0.00	0.0	\$0.00
Oak Species	0.0	\$0.00	497.0	\$23.57	0.0	\$0.00	0.0	\$0.00	0.0	\$0.00
Basswood	0.0	\$0.00	1,481.0	\$13.35	0.0	\$0.00	0.0	\$0.00	0.0	\$0.00
Mixed/Other Hdws	0.0	\$0.00	0.0	\$0.00	0.0	\$0.00	0.0	\$0.00	0.0	\$0.00
Balsam fir	0.0	\$0.00	0.0	\$0.00	3,593.0	\$9.33	0.0	\$0.00	0.0	\$0.00
White Spruce	0.0	\$0.00	0.0	\$0.00	0.0	\$0.00	0.0	\$0.00	0.0	\$0.00
Black Spruce	0.0	\$0.00	0.0	\$0.00	7,208.0	\$20.15	0.0	\$0.00	0.0	\$0.00
Tamarack	0.0	\$0.00	0.0	\$0.00	5,574.0	\$5.67	0.0	\$0.00	0.0	\$0.00
White Cedar	0.0	\$0.00	0.0	\$0.00	0.0	\$0.00	0.0	\$0.00	0.0	\$0.00
Jack Pine	0.0	\$0.00	3,587.0	\$34.25	0.0	\$0.00	0.0	\$0.00	0.0	\$0.00
Red Pine	0.0	\$0.00	13,034.0	\$52.99	0.0	\$0.00	0.0	\$0.00	0.0	\$0.00
White Pine	0.0	\$0.00	334.0	\$35.55	0.0	\$0.00	0.0	\$0.00	0.0	\$0.00
Maple Species	0.0	\$0.00	0.0	\$0.00	1,948.0	\$8.57	0.0	\$0.00	0.0	\$0.00
Mixed Species	0.0	\$0.00	0.0	\$0.00	0.0	\$0.00	0.0	\$0.00	0.0	\$0.00
Itasca Co. All Species	0.0	\$0.00	21,016.0	\$42.09	74,197.0	\$28.75	0.0	\$0.00	0.0	\$0.00

2021 Minnesota Public Agencies Stumpage Price Review

Agency Name: Koochiching Co.

Reporting Period: 01/21 to 12/21

Reporting Basis: Appraisal Reports

<u>Species Name</u>	Sawtimber		Pulp and Bolts		Pulpwood		Fuelwood		Biomass	
	<u>MBF</u>	<u>Avg Price</u>	<u>Cords</u>	<u>Avg Price</u>	<u>Cords</u>	<u>Avg Price</u>	<u>Cords</u>	<u>Avg Price</u>	<u>Tons</u>	<u>Avg Price</u>
Aspen	0.0	\$0.00	0.0	\$0.00	66,784.0	\$35.01	0.0	\$0.00	0.0	\$0.00
Balm of Gilead	0.0	\$0.00	0.0	\$0.00	3,641.0	\$32.40	0.0	\$0.00	0.0	\$0.00
Birch Species	0.0	\$0.00	0.0	\$0.00	3,575.0	\$6.72	0.0	\$0.00	0.0	\$0.00
Ash Species	0.0	\$0.00	0.0	\$0.00	7,045.0	\$7.76	15.0	\$3.33	0.0	\$0.00
Elm Species	0.0	\$0.00	0.0	\$0.00	0.0	\$0.00	0.0	\$0.00	0.0	\$0.00
Oak Species	0.0	\$0.00	0.0	\$0.00	0.0	\$0.00	2.0	\$3.00	0.0	\$0.00
Basswood	0.0	\$0.00	0.0	\$0.00	716.0	\$6.53	0.0	\$0.00	0.0	\$0.00
Mixed/Other Hdws	0.0	\$0.00	0.0	\$0.00	0.0	\$0.00	0.0	\$0.00	0.0	\$0.00
Balsam fir	0.0	\$0.00	0.0	\$0.00	5,753.0	\$7.60	0.0	\$0.00	0.0	\$0.00
White Spruce	0.0	\$0.00	0.0	\$0.00	0.0	\$0.00	0.0	\$0.00	0.0	\$0.00
Black Spruce	0.0	\$0.00	0.0	\$0.00	16,706.0	\$24.25	0.0	\$0.00	0.0	\$0.00
Tamarack	0.0	\$0.00	0.0	\$0.00	3,648.0	\$5.80	0.0	\$0.00	0.0	\$0.00
White Cedar	0.0	\$0.00	0.0	\$0.00	619.0	\$5.21	0.0	\$0.00	0.0	\$0.00
Jack Pine	2,550.0	\$115.47	0.0	\$0.00	0.0	\$0.00	0.0	\$0.00	0.0	\$0.00
Red Pine	0.0	\$0.00	3,321.0	\$44.70	0.0	\$0.00	0.0	\$0.00	0.0	\$0.00
White Pine	0.0	\$0.00	2.0	\$23.00	0.0	\$0.00	0.0	\$0.00	0.0	\$0.00
Maple Species	0.0	\$0.00	0.0	\$0.00	876.0	\$9.02	0.0	\$0.00	0.0	\$0.00
Mixed Species	0.0	\$0.00	0.0	\$0.00	0.0	\$0.00	196.0	\$1.98	0.0	\$0.00
Koochiching Co. All Species	2,550.0	\$115.47	3,323.0	\$44.68	109,363.0	\$27.62	213.0	\$2.08	0.0	\$0.00

2021 Minnesota Public Agencies Stumpage Price Review

Agency Name: Lake Co.

Reporting Period: 01/21 to 12/21

Reporting Basis: Appraisal Reports

<u>Species Name</u>	Sawtimber		Pulp and Bolts		Pulpwood		Fuelwood		Biomass	
	<u>MBF</u>	<u>Avg Price</u>	<u>Cords</u>	<u>Avg Price</u>	<u>Cords</u>	<u>Avg Price</u>	<u>Cords</u>	<u>Avg Price</u>	<u>Tons</u>	<u>Avg Price</u>
Aspen	0.0	\$0.00	0.0	\$0.00	2,118.0	\$19.75	0.0	\$0.00	0.0	\$0.00
Balm of Gilead	0.0	\$0.00	0.0	\$0.00	59.0	\$12.12	0.0	\$0.00	0.0	\$0.00
Birch Species	0.0	\$0.00	0.0	\$0.00	2,071.0	\$9.09	0.0	\$0.00	0.0	\$0.00
Ash Species	0.0	\$0.00	0.0	\$0.00	462.0	\$3.80	0.0	\$0.00	0.0	\$0.00
Elm Species	0.0	\$0.00	0.0	\$0.00	0.0	\$0.00	0.0	\$0.00	0.0	\$0.00
Oak Species	0.0	\$0.00	0.0	\$0.00	0.0	\$0.00	0.0	\$0.00	0.0	\$0.00
Basswood	0.0	\$0.00	0.0	\$0.00	5.0	\$5.40	0.0	\$0.00	0.0	\$0.00
Mixed/Other Hdws	0.0	\$0.00	0.0	\$0.00	0.0	\$0.00	0.0	\$0.00	0.0	\$0.00
Balsam fir	0.0	\$0.00	0.0	\$0.00	1,248.0	\$3.16	0.0	\$0.00	0.0	\$0.00
White Spruce	0.0	\$0.00	0.0	\$0.00	534.0	\$9.55	0.0	\$0.00	0.0	\$0.00
Black Spruce	0.0	\$0.00	0.0	\$0.00	49.0	\$10.89	0.0	\$0.00	0.0	\$0.00
Tamarack	0.0	\$0.00	0.0	\$0.00	0.0	\$0.00	0.0	\$0.00	0.0	\$0.00
White Cedar	0.0	\$0.00	0.0	\$0.00	0.0	\$0.00	0.0	\$0.00	0.0	\$0.00
Jack Pine	0.0	\$0.00	0.0	\$0.00	0.0	\$0.00	0.0	\$0.00	0.0	\$0.00
Red Pine	0.0	\$0.00	151.0	\$17.77	0.0	\$0.00	0.0	\$0.00	0.0	\$0.00
White Pine	0.0	\$0.00	40.0	\$36.00	0.0	\$0.00	0.0	\$0.00	0.0	\$0.00
Maple Species	0.0	\$0.00	0.0	\$0.00	4,686.0	\$9.53	0.0	\$0.00	0.0	\$0.00
Mixed Species	0.0	\$0.00	0.0	\$0.00	0.0	\$0.00	0.0	\$0.00	0.0	\$0.00
Lake Co. All Species	0.0	\$0.00	191.0	\$21.59	11,232.0	\$10.45	0.0	\$0.00	0.0	\$0.00

2021 Minnesota Public Agencies Stumpage Price Review

Agency Name: Pine Co.

Reporting Period: 01/21 to 12/21

Reporting Basis: Appraisal Reports

<u>Species Name</u>	Sawtimber		Pulp and Bolts		Pulpwood		Fuelwood		Biomass	
	<u>MBF</u>	<u>Avg Price</u>	<u>Cords</u>	<u>Avg Price</u>	<u>Cords</u>	<u>Avg Price</u>	<u>Cords</u>	<u>Avg Price</u>	<u>Tons</u>	<u>Avg Price</u>
Aspen	0.0	\$0.00	0.0	\$0.00	3,168.0	\$34.73	0.0	\$0.00	0.0	\$0.00
Balm of Gilead	0.0	\$0.00	0.0	\$0.00	0.0	\$0.00	0.0	\$0.00	0.0	\$0.00
Birch Species	0.0	\$0.00	453.0	\$18.43	0.0	\$0.00	0.0	\$0.00	0.0	\$0.00
Ash Species	0.0	\$0.00	139.0	\$16.74	0.0	\$0.00	0.0	\$0.00	0.0	\$0.00
Elm Species	0.0	\$0.00	0.0	\$0.00	0.0	\$0.00	0.0	\$0.00	0.0	\$0.00
Oak Species	0.0	\$0.00	304.0	\$33.41	0.0	\$0.00	0.0	\$0.00	0.0	\$0.00
Basswood	0.0	\$0.00	58.0	\$11.93	0.0	\$0.00	0.0	\$0.00	0.0	\$0.00
Mixed/Other Hdws	0.0	\$0.00	10.0	\$15.00	0.0	\$0.00	0.0	\$0.00	0.0	\$0.00
Balsam fir	0.0	\$0.00	0.0	\$0.00	0.0	\$0.00	0.0	\$0.00	0.0	\$0.00
White Spruce	0.0	\$0.00	0.0	\$0.00	0.0	\$0.00	0.0	\$0.00	0.0	\$0.00
Black Spruce	0.0	\$0.00	0.0	\$0.00	0.0	\$0.00	0.0	\$0.00	0.0	\$0.00
Tamarack	0.0	\$0.00	0.0	\$0.00	0.0	\$0.00	0.0	\$0.00	0.0	\$0.00
White Cedar	0.0	\$0.00	0.0	\$0.00	0.0	\$0.00	0.0	\$0.00	0.0	\$0.00
Jack Pine	0.0	\$0.00	0.0	\$0.00	0.0	\$0.00	0.0	\$0.00	0.0	\$0.00
Red Pine	0.0	\$0.00	0.0	\$0.00	28.0	\$3.57	0.0	\$0.00	0.0	\$0.00
White Pine	0.0	\$0.00	0.0	\$0.00	0.0	\$0.00	0.0	\$0.00	0.0	\$0.00
Maple Species	0.0	\$0.00	972.0	\$18.12	0.0	\$0.00	0.0	\$0.00	0.0	\$0.00
Mixed Species	0.0	\$0.00	0.0	\$0.00	0.0	\$0.00	0.0	\$0.00	0.0	\$0.00
Pine Co. All Species	0.0	\$0.00	1,936.0	\$20.29	3,196.0	\$34.46	0.0	\$0.00	0.0	\$0.00

2021 Minnesota Public Agencies Stumpage Price Review

Agency Name: St. Louis Co.

Reporting Period: 01/21 to 12/21

Reporting Basis: Appraisal Reports

Species Name	Sawtimber		Pulp and Bolts		Pulpwood		Fuelwood		Biomass	
	MBF	Avg Price	Cords	Avg Price	Cords	Avg Price	Cords	Avg Price	Tons	Avg Price
Aspen	0.0	\$0.00	0.0	\$0.00	76,316.0	\$33.37	0.0	\$0.00	0.0	\$0.00
Balm of Gilead	0.0	\$0.00	0.0	\$0.00	942.0	\$34.56	0.0	\$0.00	0.0	\$0.00
Birch Species	0.0	\$0.00	0.0	\$0.00	9,668.0	\$8.92	0.0	\$0.00	0.0	\$0.00
Ash Species	0.0	\$0.00	0.0	\$0.00	2,007.0	\$5.42	0.0	\$0.00	0.0	\$0.00
Elm Species	0.0	\$0.00	0.0	\$0.00	0.0	\$0.00	0.0	\$0.00	0.0	\$0.00
Oak Species	0.0	\$0.00	0.0	\$0.00	596.0	\$15.50	0.0	\$0.00	0.0	\$0.00
Basswood	0.0	\$0.00	0.0	\$0.00	412.0	\$10.81	0.0	\$0.00	0.0	\$0.00
Mixed/Other Hdws	0.0	\$0.00	0.0	\$0.00	0.0	\$0.00	0.0	\$0.00	0.0	\$0.00
Balsam fir	0.0	\$0.00	0.0	\$0.00	8,385.0	\$7.49	0.0	\$0.00	0.0	\$0.00
White Spruce	0.0	\$0.00	0.0	\$0.00	3,867.0	\$21.76	0.0	\$0.00	0.0	\$0.00
Black Spruce	0.0	\$0.00	0.0	\$0.00	14,411.0	\$22.81	0.0	\$0.00	0.0	\$0.00
Tamarack	0.0	\$0.00	0.0	\$0.00	3,462.0	\$4.93	0.0	\$0.00	0.0	\$0.00
White Cedar	0.0	\$0.00	0.0	\$0.00	0.0	\$0.00	0.0	\$0.00	0.0	\$0.00
Jack Pine	0.0	\$0.00	3,106.0	\$19.69	0.0	\$0.00	0.0	\$0.00	0.0	\$0.00
Red Pine	0.0	\$0.00	8,530.0	\$21.50	0.0	\$0.00	0.0	\$0.00	0.0	\$0.00
White Pine	0.0	\$0.00	1,631.0	\$40.32	0.0	\$0.00	0.0	\$0.00	0.0	\$0.00
Maple Species	0.0	\$0.00	0.0	\$0.00	6,034.0	\$6.00	0.0	\$0.00	0.0	\$0.00
Mixed Species	0.0	\$0.00	0.0	\$0.00	386.0	\$5.00	0.0	\$0.00	128.0	\$1.00
St. Louis Co. All Species	0.0	\$0.00	13,267.0	\$23.39	126,486.0	\$25.47	0.0	\$0.00	128.0	\$1.00

2021 Minnesota Public Agencies Stumpage Price Review

Agency Name: Wadena Co.

Reporting Period: 01/21 to 12/21

Reporting Basis: Appraisal Reports

<u>Species Name</u>	Sawtimber		Pulp and Bolts		Pulpwood		Fuelwood		Biomass	
	<u>MBF</u>	<u>Avg Price</u>	<u>Cords</u>	<u>Avg Price</u>	<u>Cords</u>	<u>Avg Price</u>	<u>Cords</u>	<u>Avg Price</u>	<u>Tons</u>	<u>Avg Price</u>
Aspen	0.0	\$0.00	0.0	\$0.00	360.0	\$34.48	0.0	\$0.00	0.0	\$0.00
Balm of Gilead	0.0	\$0.00	0.0	\$0.00	0.0	\$0.00	0.0	\$0.00	0.0	\$0.00
Birch Species	0.0	\$0.00	0.0	\$0.00	60.0	\$11.88	0.0	\$0.00	0.0	\$0.00
Ash Species	0.0	\$0.00	0.0	\$0.00	0.0	\$0.00	0.0	\$0.00	0.0	\$0.00
Elm Species	0.0	\$0.00	0.0	\$0.00	0.0	\$0.00	0.0	\$0.00	0.0	\$0.00
Oak Species	0.0	\$0.00	0.0	\$0.00	0.0	\$0.00	0.0	\$0.00	0.0	\$0.00
Basswood	0.0	\$0.00	0.0	\$0.00	0.0	\$0.00	0.0	\$0.00	0.0	\$0.00
Mixed/Other Hdws	0.0	\$0.00	0.0	\$0.00	0.0	\$0.00	0.0	\$0.00	0.0	\$0.00
Balsam fir	0.0	\$0.00	0.0	\$0.00	0.0	\$0.00	0.0	\$0.00	0.0	\$0.00
White Spruce	0.0	\$0.00	0.0	\$0.00	0.0	\$0.00	0.0	\$0.00	0.0	\$0.00
Black Spruce	0.0	\$0.00	0.0	\$0.00	0.0	\$0.00	0.0	\$0.00	0.0	\$0.00
Tamarack	0.0	\$0.00	0.0	\$0.00	0.0	\$0.00	0.0	\$0.00	0.0	\$0.00
White Cedar	0.0	\$0.00	0.0	\$0.00	0.0	\$0.00	0.0	\$0.00	0.0	\$0.00
Jack Pine	0.0	\$0.00	295.0	\$32.66	0.0	\$0.00	40.0	\$2.00	0.0	\$0.00
Red Pine	0.0	\$0.00	50.0	\$22.08	0.0	\$0.00	0.0	\$0.00	0.0	\$0.00
White Pine	0.0	\$0.00	0.0	\$0.00	0.0	\$0.00	0.0	\$0.00	0.0	\$0.00
Maple Species	0.0	\$0.00	0.0	\$0.00	0.0	\$0.00	0.0	\$0.00	0.0	\$0.00
Mixed Species	0.0	\$0.00	0.0	\$0.00	0.0	\$0.00	0.0	\$0.00	0.0	\$0.00
Wadena Co. All Species	0.0	\$0.00	345.0	\$31.13	420.0	\$31.25	40.0	\$2.00	0.0	\$0.00

MINNESOTA FEDERAL AGENCIES 2021

Agency Name: USDI - BIA

Reporting Period: 01/21 to 12/21

Reporting Basis: Scale Receipts

Species Name	Sawtimber		Pulp and Bolts		Pulpwood		Fuelwood		Biomass	
	MBF	Avg Price	Cords	Avg Price	Cords	Avg Price	Cords	Avg Price	Tons	Avg Price
Aspen	0.0	\$0.00	0.0	\$0.00	36,743.6	\$21.16	0.0	\$0.00	0.0	\$0.00
Balm of Gilead	0.0	\$0.00	0.0	\$0.00	1,513.0	\$20.04	0.0	\$0.00	0.0	\$0.00
Birch Species	0.0	\$0.00	38.4	\$12.57	1,920.0	\$7.64	0.0	\$0.00	0.0	\$0.00
Ash Species	0.0	\$0.00	369.2	\$25.20	1,241.0	\$6.11	0.0	\$0.00	0.0	\$0.00
Elm Species	0.0	\$0.00	0.0	\$0.00	7.0	\$7.80	0.0	\$0.00	0.0	\$0.00
Oak Species	0.0	\$0.00	0.0	\$0.00	0.0	\$0.00	148.2	\$5.85	0.0	\$0.00
Basswood	0.0	\$0.00	0.0	\$0.00	0.0	\$0.00	0.0	\$0.00	0.0	\$0.00
Mixed/Other Hdws	0.0	\$0.00	0.0	\$0.00	779.0	\$6.00	0.0	\$0.00	0.0	\$0.00
Balsam fir	0.0	\$0.00	72.7	\$14.33	1,770.8	\$13.74	0.0	\$0.00	0.0	\$0.00
White Spruce	0.0	\$0.00	327.9	\$23.54	961.8	\$15.31	0.0	\$0.00	0.0	\$0.00
Black Spruce	0.0	\$0.00	1,676.5	\$28.23	142.3	\$24.40	0.0	\$0.00	0.0	\$0.00
Tamarack	0.0	\$0.00	0.0	\$0.00	338.2	\$7.27	0.0	\$0.00	0.0	\$0.00
White Cedar	0.0	\$0.00	0.0	\$0.00	3,841.3	\$5.32	0.0	\$0.00	0.0	\$0.00
Jack Pine	0.0	\$0.00	5.4	\$23.73	19.2	\$10.94	0.0	\$0.00	0.0	\$0.00
Red Pine	154.1	\$113.35	2,725.6	\$26.32	502.5	\$10.45	0.0	\$0.00	0.0	\$0.00
White Pine	21.0	\$108.84	0.0	\$0.00	0.4	\$26.15	0.0	\$0.00	0.0	\$0.00
Maple Species	0.0	\$0.00	0.0	\$0.00	128.0	\$7.81	0.0	\$0.00	0.0	\$0.00
Mixed Species	0.0	\$0.00	0.0	\$0.00	0.0	\$0.00	0.0	\$0.00	0.0	\$0.00
USDI BIA All Species	175.1	\$112.81	5,215.7	\$26.41	49,908.1	\$18.17	148.2	\$5.85	0.0	\$0.00

2021 Minnesota Public Agencies Stumpage Price Review

Agency Name: Chippewa N.F.

Reporting Period: 10/20 to 09/21

Reporting Basis: Appraisal Reports

<u>Species Name</u>	Sawtimber		Pulp and Bolts		Pulpwood		Fuelwood		Biomass	
	<u>MBF</u>	<u>Avg Price</u>	<u>Cords</u>	<u>Avg Price</u>	<u>Cords</u>	<u>Avg Price</u>	<u>Cords</u>	<u>Avg Price</u>	<u>Tons</u>	<u>Avg Price</u>
Aspen	0.0	\$0.00	0.0	\$0.00	32,682.0	\$31.52	0.0	\$0.00	0.0	\$0.00
Balm of Gilead	0.0	\$0.00	0.0	\$0.00	0.0	\$0.00	0.0	\$0.00	0.0	\$0.00
Birch Species	0.0	\$0.00	0.0	\$0.00	0.0	\$0.00	0.0	\$0.00	0.0	\$0.00
Ash Species	0.0	\$0.00	0.0	\$0.00	0.0	\$0.00	0.0	\$0.00	0.0	\$0.00
Elm Species	0.0	\$0.00	0.0	\$0.00	0.0	\$0.00	0.0	\$0.00	0.0	\$0.00
Oak Species	0.0	\$0.00	0.0	\$0.00	0.0	\$0.00	0.0	\$0.00	0.0	\$0.00
Basswood	0.0	\$0.00	0.0	\$0.00	0.0	\$0.00	0.0	\$0.00	0.0	\$0.00
Mixed/Other Hdws	0.0	\$0.00	12,938.0	\$18.08	0.0	\$0.00	0.0	\$0.00	0.0	\$0.00
Balsam fir	0.0	\$0.00	3,582.0	\$17.43	0.0	\$0.00	0.0	\$0.00	0.0	\$0.00
White Spruce	0.0	\$0.00	148.0	\$24.11	592.0	\$10.60	0.0	\$0.00	0.0	\$0.00
Black Spruce	0.0	\$0.00	0.0	\$0.00	0.0	\$0.00	0.0	\$0.00	0.0	\$0.00
Tamarack	0.0	\$0.00	0.0	\$0.00	0.0	\$0.00	0.0	\$0.00	0.0	\$0.00
White Cedar	0.0	\$0.00	0.0	\$0.00	0.0	\$0.00	0.0	\$0.00	0.0	\$0.00
Jack Pine	574.0	\$111.95	0.0	\$0.00	0.0	\$0.00	0.0	\$0.00	0.0	\$0.00
Red Pine	0.0	\$0.00	30,200.0	\$36.62	0.0	\$0.00	0.0	\$0.00	0.0	\$0.00
White Pine	0.0	\$0.00	0.0	\$0.00	0.0	\$0.00	0.0	\$0.00	0.0	\$0.00
Maple Species	0.0	\$0.00	0.0	\$0.00	0.0	\$0.00	0.0	\$0.00	0.0	\$0.00
Mixed Species	0.0	\$0.00	0.0	\$0.00	0.0	\$0.00	0.0	\$0.00	0.0	\$0.00
Chippewa N.F. All Species	574.0	\$111.95	46,868.0	\$30.00	33,274.0	\$31.15	0.0	\$0.00	0.0	\$0.00

2021 Minnesota Public Agencies Stumpage Price Review

Agency Name: Superior N.F.

Reporting Period: 10/20 to 09/21

Reporting Basis: Appraisal Reports

<u>Species Name</u>	Sawtimber		Pulp and Bolts		Pulpwood		Fuelwood		Biomass	
	<u>MBF</u>	<u>Avg Price</u>	<u>Cords</u>	<u>Avg Price</u>	<u>Cords</u>	<u>Avg Price</u>	<u>Cords</u>	<u>Avg Price</u>	<u>Tons</u>	<u>Avg Price</u>
Aspen	0.0	\$0.00	0.0	\$0.00	45,120.3	\$22.98	0.0	\$0.00	0.0	\$0.00
Balm of Gilead	0.0	\$0.00	0.0	\$0.00	252.0	\$21.00	0.0	\$0.00	0.0	\$0.00
Birch Species	0.0	\$0.00	2,197.0	\$14.16	4,401.2	\$2.86	0.0	\$0.00	0.0	\$0.00
Ash Species	0.0	\$0.00	0.0	\$0.00	20.0	\$6.30	0.0	\$0.00	0.0	\$0.00
Elm Species	0.0	\$0.00	0.0	\$0.00	0.0	\$0.00	0.0	\$0.00	0.0	\$0.00
Oak Species	0.0	\$0.00	0.0	\$0.00	0.0	\$0.00	0.0	\$0.00	0.0	\$0.00
Basswood	0.0	\$0.00	0.0	\$0.00	0.0	\$0.00	0.0	\$0.00	0.0	\$0.00
Mixed/Other Hdws	0.0	\$0.00	0.0	\$0.00	11,357.3	\$9.18	0.0	\$0.00	0.0	\$0.00
Balsam fir	0.0	\$0.00	0.0	\$0.00	4,875.6	\$2.74	0.0	\$0.00	0.0	\$0.00
White Spruce	0.0	\$0.00	1,838.0	\$20.21	2,734.5	\$5.42	0.0	\$0.00	0.0	\$0.00
Black Spruce	0.0	\$0.00	0.0	\$0.00	0.0	\$0.00	0.0	\$0.00	0.0	\$0.00
Tamarack	0.0	\$0.00	0.0	\$0.00	0.0	\$0.00	0.0	\$0.00	0.0	\$0.00
White Cedar	0.0	\$0.00	0.0	\$0.00	0.0	\$0.00	0.0	\$0.00	0.0	\$0.00
Jack Pine	1,202.0	\$75.53	2,365.0	\$18.75	0.0	\$0.00	0.0	\$0.00	0.0	\$0.00
Red Pine	12,599.0	\$143.98	7,020.0	\$28.87	11,624.1	\$9.19	0.0	\$0.00	0.0	\$0.00
White Pine	0.0	\$0.00	1,778.0	\$32.40	0.0	\$0.00	0.0	\$0.00	0.0	\$0.00
Maple Species	0.0	\$0.00	0.0	\$0.00	2,262.0	\$8.08	0.0	\$0.00	0.0	\$0.00
Mixed Species	0.0	\$0.00	691.0	\$8.68	3,788.3	\$2.52	0.0	\$0.00	0.0	\$0.00
Superior N.F. All Species	13,801.0	\$138.02	15,889.0	\$23.84	86,435.3	\$15.29	0.0	\$0.00	0.0	\$0.00

MnDNR FORESTRY [STATE] 2021**Agency Name: MnDNR Forestry****Reporting Period: 01/21 to 12/21****Reporting Basis: Appraisal Reports**

Species Name	Sawtimber		Pulp and Bolts		Pulpwood		Fuelwood		Biomass	
	MBF	Avg Price	Cords	Avg Price	Cords	Avg Price	Cords	Avg Price	Tons	Avg Price
Aspen	0.0	\$0.00	0.0	\$0.00	405,963.9	\$28.83	5.0	\$2.50	0.0	\$0.00
Balm of Gilead	0.0	\$0.00	0.0	\$0.00	25,170.2	\$25.52	0.0	\$0.00	0.0	\$0.00
Birch Species	0.1	\$47.00	17,044.5	\$18.09	10,980.6	\$10.10	181.1	\$2.81	0.0	\$0.00
Ash Species	1.2	\$130.26	17,593.4	\$9.54	8,857.3	\$6.29	38.9	\$3.24	0.0	\$0.00
Elm Species	2.8	\$43.99	5.7	\$15.00	180.2	\$7.74	0.0	\$0.00	0.0	\$0.00
Oak Species	66.2	\$349.17	19,927.8	\$26.47	1,256.4	\$12.03	200.0	\$2.00	0.0	\$0.00
Basswood	4.3	\$76.79	12,909.8	\$11.71	1,719.0	\$8.42	86.4	\$4.15	0.0	\$0.00
Mixed/Other Hdws	7.4	\$72.59	0.0	\$0.00	23.7	\$7.44	123.9	\$6.17	0.0	\$0.00
Balsam fir	0.0	\$0.00	10,441.0	\$10.03	13,643.8	\$5.78	24.4	\$2.50	0.0	\$0.00
White Spruce	3.0	\$81.40	18,848.2	\$19.55	1,933.5	\$8.15	116.6	\$2.00	0.0	\$0.00
Black Spruce	0.0	\$0.00	0.0	\$0.00	38,879.5	\$11.96	21.6	\$2.50	0.0	\$0.00
Tamarack	0.0	\$0.00	7,403.3	\$7.26	18,835.0	\$6.38	4,055.1	\$2.03	0.0	\$0.00
White Cedar	0.0	\$0.00	1,055.2	\$10.77	1,664.6	\$5.63	0.0	\$0.00	0.0	\$0.00
Jack Pine	0.0	\$0.00	16,698.8	\$23.92	1,831.4	\$7.11	468.2	\$2.47	0.0	\$0.00
Red Pine	10,952.4	\$148.57	45,368.3	\$44.07	0.0	\$0.00	1,826.1	\$1.62	0.0	\$0.00
White Pine	245.4	\$101.50	1,020.2	\$22.87	24.4	\$5.66	0.0	\$0.00	0.0	\$0.00
Maple Species	12.7	\$312.91	8,145.4	\$18.48	14,983.0	\$11.69	0.0	\$0.00	0.0	\$0.00
Mixed Species	0.0	\$0.00	0.0	\$0.00	0.0	\$0.00	0.0	\$0.00	14,944.2	\$0.76
MnDNR Forestry All Species	11,295.5	\$148.79	176,461.6	\$24.18	545,946.5	\$24.58	7,147.3	\$2.08	14,944.2	\$0.76