

2020 Minnesota Public Agencies Stumpage Price Review and Price Indices

October 28, 2021 (Figure 5 fixed Nov. 12, 2021)

Download at URL: <http://www.dnr.state.mn.us/forestry/timbersales/stumpage.html>

Highlights

- In 2020, all species and products stumpage sold by public agencies in Minnesota totaled 1.635 million cord equivalents with a value of \$40.717 million compared to 1.685 million cord equivalents sold with a value of \$42.792 million in 2019. This amounts to a year-over-year volume decrease of 49,059 cord equivalents or 2.9 percent and a year-over-year value decrease of \$2.075 million or 4.8 percent (Figure 1). In 2020, the average all species and products sell price was \$24.89 per cord equivalent compared to \$25.40 in 2019, a price decrease of \$0.51 per cord equivalent or 2 percent.

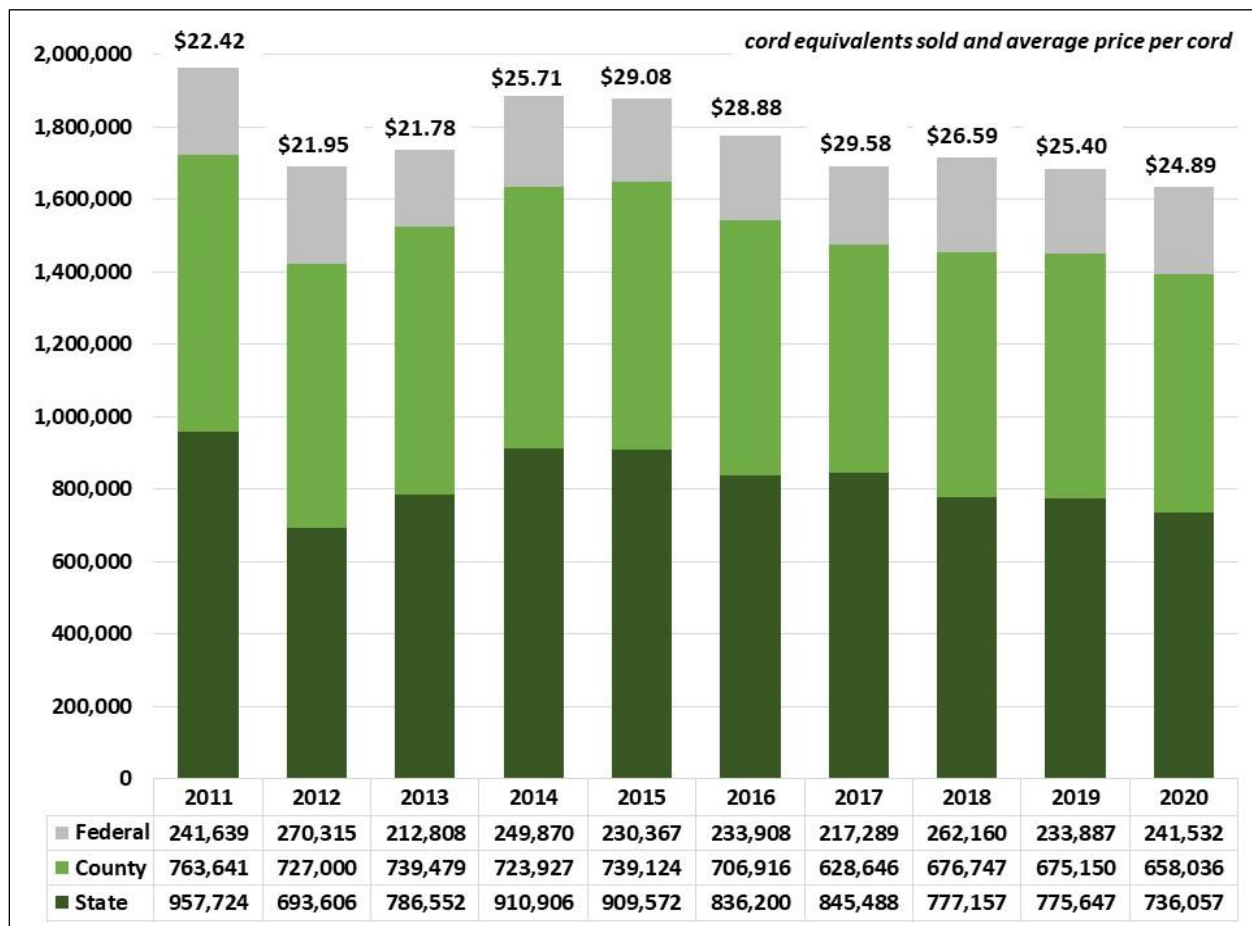


Figure 1: Volume sold by ownership category and average sell price per cord equivalent, 2011-2020. (a)
a) Product categories: sawtimber, pulp & bolts, pulpwood, fuelwood, and biomass.

- In 2020, the average stumpage price received by public agencies for all-species hardwood sawbolts and pulpwood cord products increased to \$25.52 per cord from \$24.40 per cord in 2019, a price increase of \$1.12 per cord or 4.6 percent. In 2020, the average public agencies aspen stumpage price received was \$30.14 per cord compared to \$28.55 per cord in 2019, a price increase of \$1.95 per cord or 5.6 percent (Figure 2, Table 2, page 6).

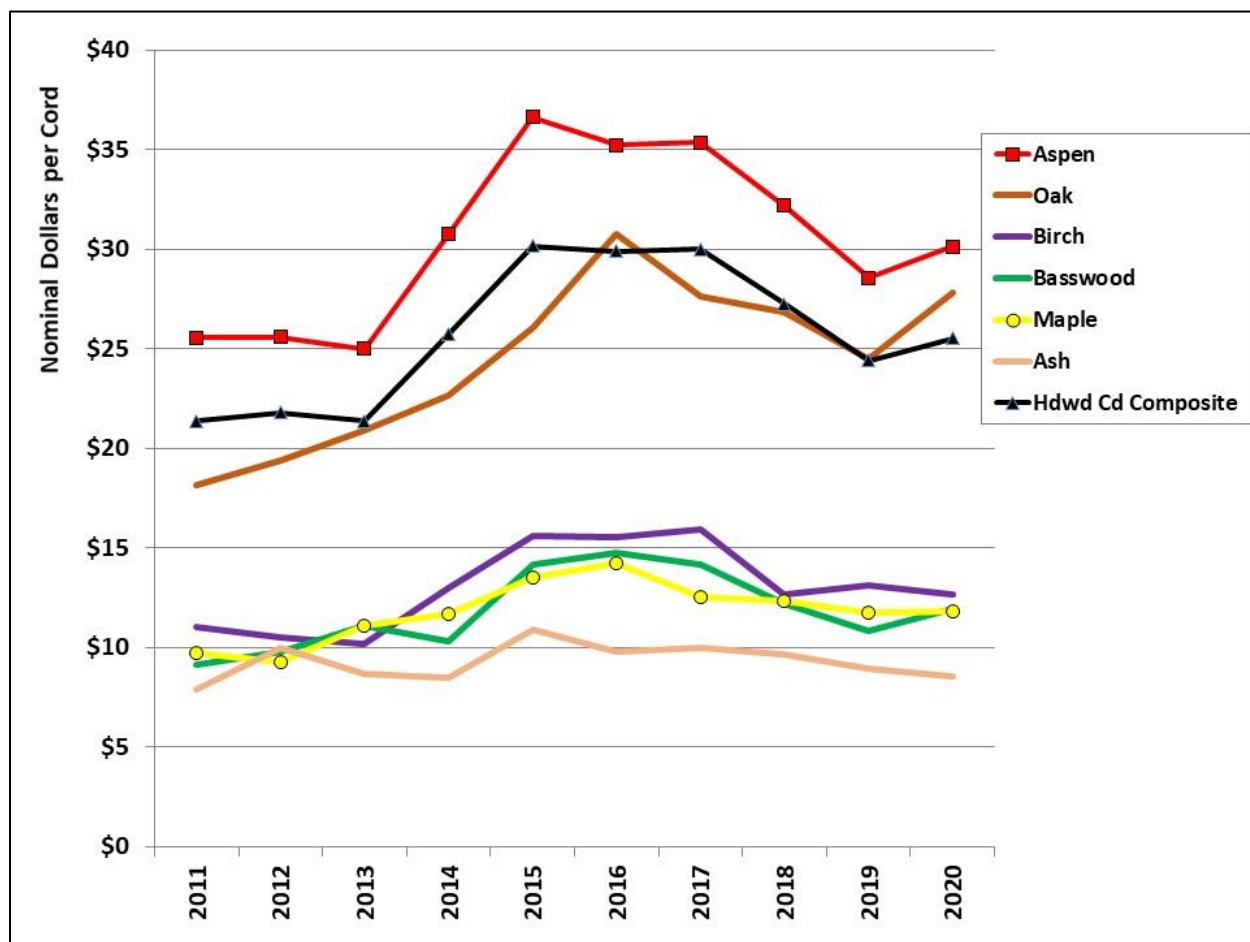


Figure 2: Hardwood cord product prices by species group, 2011-2020. (a)

a) Product categories: pulp & bolts and pulpwood only.

- In 2020, the average stumpage price received by public agencies for all-species softwood sawbolts and pulpwood cord products decreased to \$21.61 per cord from \$23.21 per cord in 2019, a price decrease of \$1.60 per cord or 6.9 percent. In 2020, the average public agencies red pine cord products stumpage price was \$31.61 per cord compared to \$33.14 per cord in 2019, a year-over-year price decrease of \$1.52 per cord or 4.6 percent. In 2020, the average public agencies black spruce cord products stumpage price was \$20.84 per cord compared to \$24.18 per cord in 2019, a year-over-year price decrease of \$3.34 per cord or 13.8 percent (Figure 3, Table 2, page 6). The large year-over-year decline in black spruce is primarily attributable to the permanent closure of the Verso-Duluth paper mill in mid-CY2020.

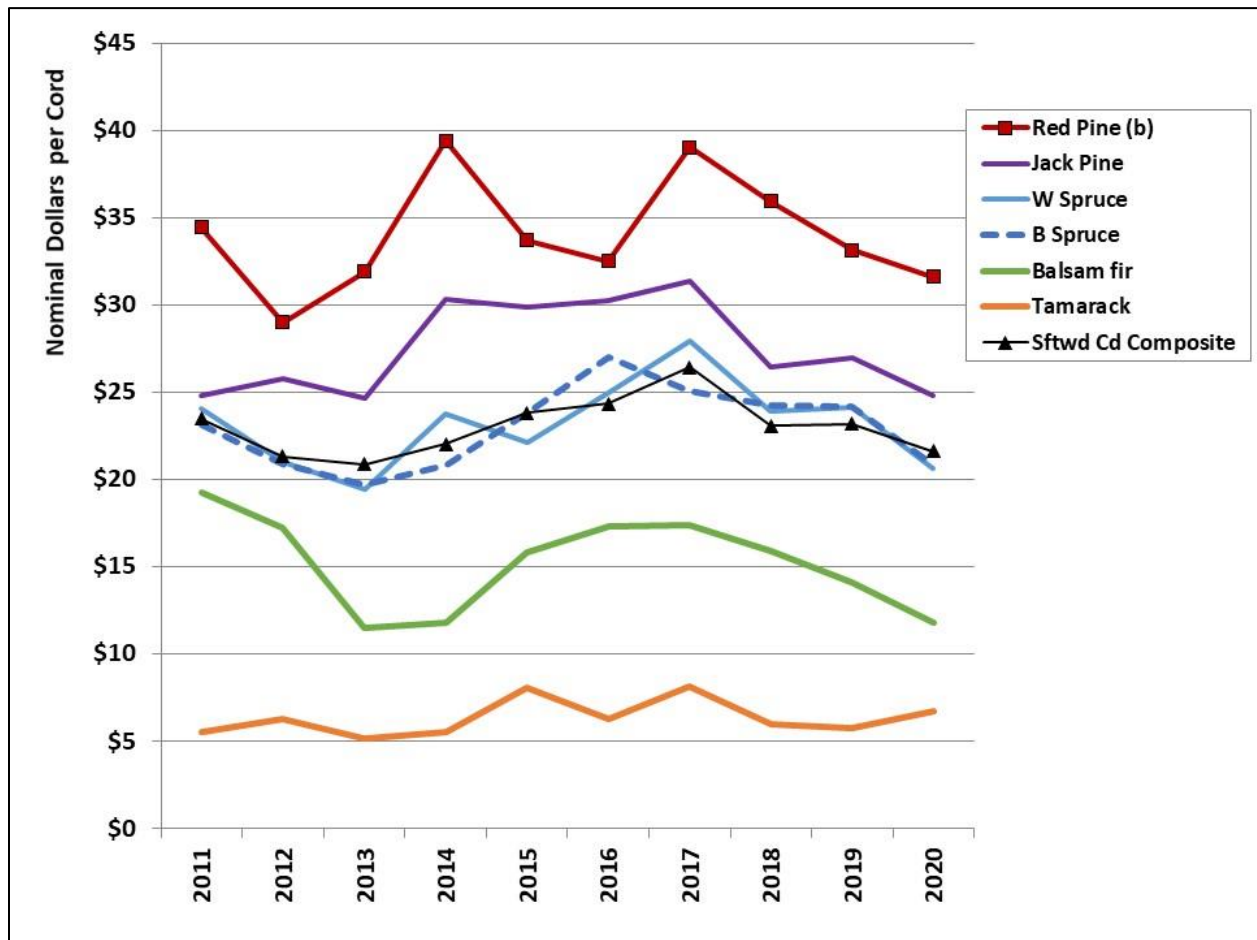


Figure 3: Softwood cord product prices by species group, 2011-2020. (a)

a) Product categories: pulp & bolts and pulpwood only.

b) Includes white pine through 2010.

- In 2020, the average stumpage price received by public agencies for all-species sawtimber decreased to \$125.95 per Mbf compared to \$144.87 per Mbf in 2019, a year-over-year price decrease of \$18.92 per Mbf or 13.1 percent. In 2020, the average price of red pine sawtimber decreased to \$128.10 per Mbf compared to \$143.27 per Mbf in 2019, a price decrease of \$15.17 per Mbf or 10.6 percent. In 2020, the average price of oak sawtimber decreased to \$161.13 compared to \$213.20 in 2019, a price decrease of \$52.07 per Mbf or 24.4 percent (Figure 4, Table 3, page 7).

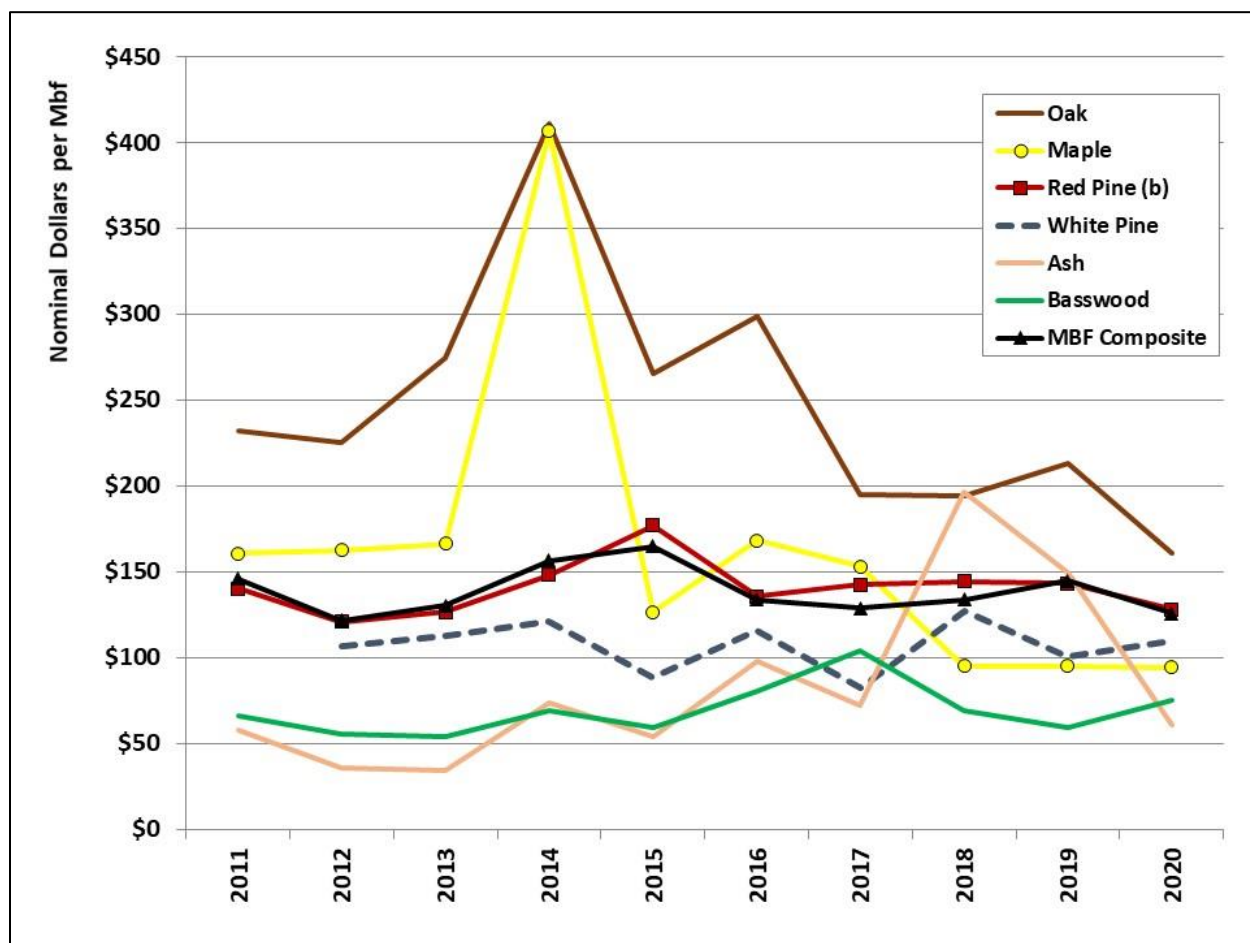


Figure 4: Sawtimber stumpage prices by species group, 2011-2020. (a)

a) Sawtimber units of measure include both Scribner log rule and cords converted to thousand board feet (Mbf) at two cords per Mbf.

b) Includes white pine through 2011.

Inflation Adjusted Stumpage Price Indices

The Implicit Price Deflator for Gross Domestic Product (GDP) is baseline inflation (all indices base year 2000=100). In 2020, the Inflation Index increased to 145.6, a 1.2 percent increase year-over-year. In 2020, the all-agencies Aspen Cord Price Index increased 5.6 percent year-over-year to 109.1. The Black Spruce Cord Price Index decreased 13.8 percent year-over-year to 90.5. The Red Pine Mbf Price Index decreased 10.6 percent year-over-year to 72.8. The Mbf Composite Price Index decreased 13.1 percent year-over-year to 117.7 (Figure 5, Table 1).

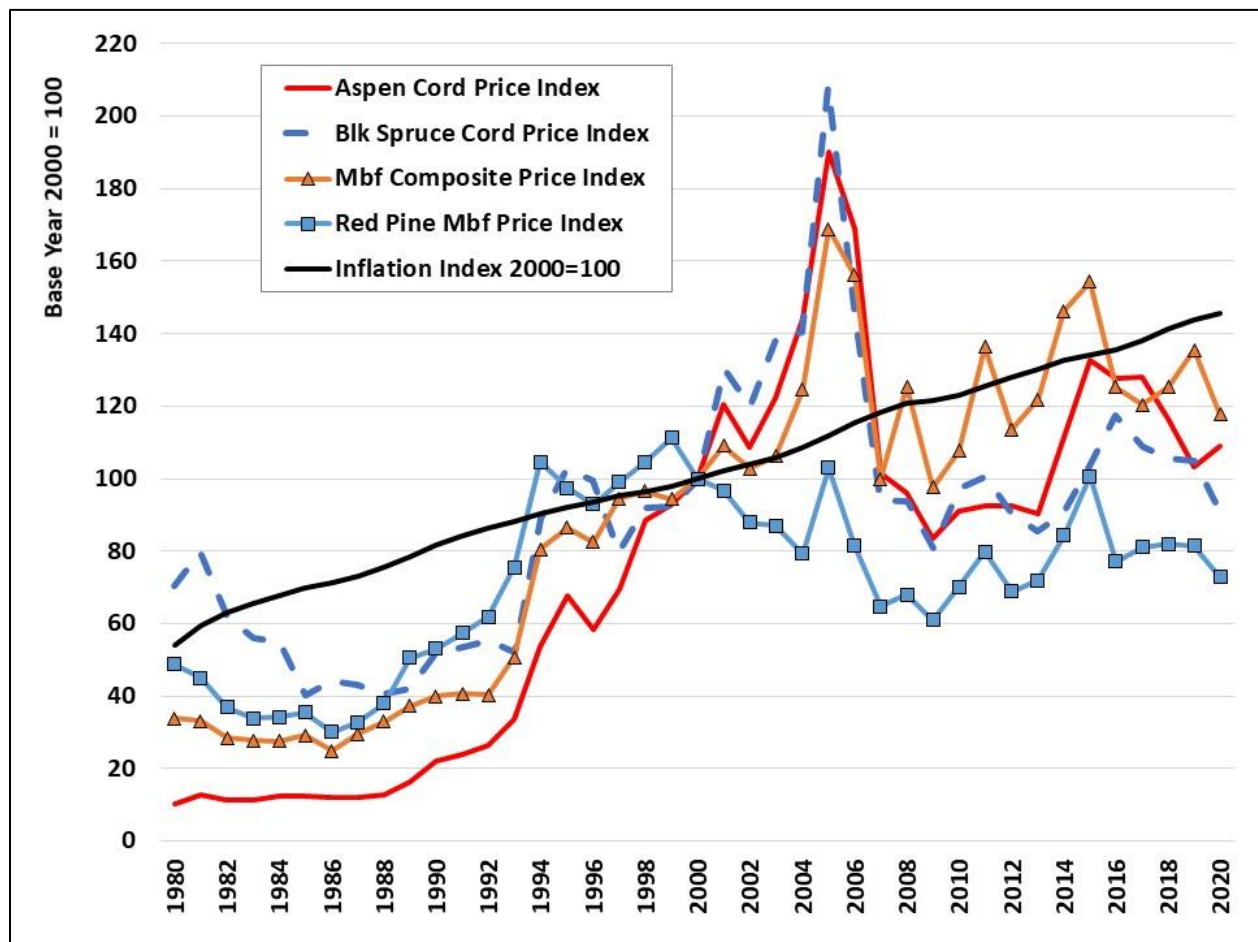


Figure 5: Inflation adjusted public agencies stumpage price indices, 1980-2020.

Table 1: Public stumpage price indices and inflation, base year 2000 = 100.

Price Index	2016	2017	2018	2019	2020	Y/Y Δ	Y/Y Δ%
Aspen Cord Price Index	127.6	128.0	116.6	103.4	109.1	5.8	5.6%
Black Spruce Cord Price Index	117.3	108.7	105.4	104.9	90.5	(14.5)	-13.8%
Red Pine Mbf Price Index	77.2	81.1	82.0	81.4	72.8	(8.6)	-10.6%
Mbf Composite Price Index	125.2	120.4	125.2	135.4	117.7	(17.7)	-13.1%
Inflation Index	135.5	138.1	141.4	143.9	145.6	1.7	1.2%

Historical Prices

Table 2: Statewide average prices received for stumpage sold in cords by public agencies in Minnesota, 10-year history.

Cord Products (Nominal \$/Cord) (a)	2011	2012	2013	2014	2015	2016	2017	2018	2019	2020	20/19 Δ\$YoY	20/19 Δ%YoY
Ash	\$7.92	\$10.02	\$8.66	\$8.51	\$10.88	\$9.81	\$9.98	\$9.68	\$8.92	\$8.55	(\$0.37)	-3.8%
Aspen	\$25.55	\$25.59	\$24.99	\$30.80	\$36.64	\$35.23	\$35.36	\$32.20	\$28.55	\$30.14	\$1.59	4.9%
Balm	\$20.01	\$22.77	\$20.56	\$24.80	\$27.68	\$27.46	\$30.56	\$25.55	\$25.59	\$25.22	(\$0.37)	-1.4%
Birch	\$11.06	\$10.54	\$10.18	\$13.00	\$15.60	\$15.53	\$15.92	\$12.66	\$13.11	\$12.64	(\$0.47)	-3.7%
Oak	\$18.14	\$19.38	\$20.89	\$22.68	\$26.06	\$30.76	\$27.62	\$26.82	\$24.50	\$27.81	\$3.31	12.3%
Basswood	\$9.15	\$9.79	\$11.13	\$10.30	\$14.19	\$14.78	\$14.18	\$12.19	\$10.86	\$11.96	\$1.10	9.0%
Maple	\$9.71	\$9.27	\$11.10	\$11.72	\$13.50	\$14.26	\$12.57	\$12.34	\$11.76	\$11.82	\$0.06	0.5%
Mixed/Other Hdws	\$11.84	\$12.23	\$10.71	\$13.90	\$14.08	\$16.58	\$16.34	\$12.40	\$12.53	\$11.73	(\$0.80)	-6.5%
Balsam fir	\$19.25	\$17.25	\$11.54	\$11.83	\$15.84	\$17.33	\$17.39	\$15.94	\$14.12	\$11.81	(\$2.31)	-14.5%
W Spruce	\$24.08	\$21.01	\$19.41	\$23.78	\$22.12	\$24.99	\$27.97	\$23.90	\$24.14	\$20.66	(\$3.48)	-14.6%
B Spruce	\$23.14	\$20.87	\$19.68	\$20.84	\$23.79	\$27.02	\$25.05	\$24.29	\$24.18	\$20.84	(\$3.34)	-13.8%
Tamarack	\$5.51	\$6.30	\$5.17	\$5.54	\$8.09	\$6.26	\$8.17	\$5.98	\$5.73	\$6.72	\$0.99	16.6%
Cedar	\$8.21	\$5.12	\$7.86	\$6.34	\$6.41	\$6.85	\$6.56	\$7.87	\$7.36	\$6.93	(\$0.43)	-5.5%
Jack Pine	\$24.85	\$25.75	\$24.67	\$30.31	\$29.85	\$30.24	\$31.36	\$26.43	\$26.95	\$24.85	(\$2.10)	-7.9%
Red Pine (b)	\$34.45	\$29.02	\$31.93	\$39.42	\$33.71	\$32.52	\$39.03	\$35.95	\$33.14	\$31.62	(\$1.52)	-4.2%
White Pine	\$31.42	\$21.74	\$30.06	\$23.23	\$38.66	\$27.02	\$16.64	\$17.44	\$27.03	\$27.34	\$0.31	1.8%
Hdwd Cd Composite	\$21.36	\$21.81	\$21.37	\$25.77	\$30.17	\$29.91	\$29.99	\$27.27	\$24.40	\$25.52	\$1.12	4.1%
Sftwd Cd Composite	\$23.48	\$21.31	\$20.89	\$22.03	\$23.84	\$24.33	\$26.45	\$23.07	\$23.21	\$21.61	(\$1.60)	-6.9%

a) Combined pulpwood and pulp & bolts products.

b) Includes white pine through 2010.

2020 Minnesota Public Agencies Stumpage Price Review

Table 3: Statewide average prices received for sawtimber stumpage sold by public agencies in Minnesota, 10-year history.

Sawtimber (Nominal \$/Mbf) (a)	2011	2012	2013	2014	2015	2016	2017	2018	2019	2020	20/19 Δ\$YoY	20/19 Δ%YoY
Ash	\$58.09	\$36.12	\$34.06	\$73.41	\$54.17	\$97.67	\$72.20	\$196.37	\$149.81	\$61.14	(\$88.67)	-45.2%
Aspen												
Birch	\$42.15	\$35.70	\$36.97	\$47.04	\$42.84	\$45.24	\$43.00	\$61.23	\$53.33	\$51.69	(\$1.64)	-2.7%
Elm	\$60.43	\$42.45	\$41.41	\$42.19	\$42.50	\$42.54	\$39.77	\$54.75	\$54.07	\$72.91	\$18.84	34.4%
Oak	\$232.20	\$225.36	\$274.54	\$411.34	\$265.54	\$299.03	\$195.16	\$194.63	\$213.20	\$161.13	(\$52.07)	-26.8%
Basswood	\$66.11	\$55.87	\$54.44	\$68.87	\$59.24	\$80.40	\$104.38	\$69.55	\$59.18	\$75.34	\$16.16	23.2%
Maple	\$160.78	\$162.50	\$166.65	\$406.70	\$126.70	\$168.50	\$153.04	\$95.21	\$95.21	\$94.29	(\$0.92)	-1.0%
Mixed/Other Hdws	\$48.31	\$36.88	\$28.56	\$65.40	\$47.87	\$47.04	\$50.28	\$47.30	\$78.78	\$67.78	(\$11.00)	-23.3%
Balsam fir			\$66.51									
W Spruce	\$64.23	\$83.12	\$87.57	\$61.12	\$74.68	\$73.59	\$67.58	\$76.14	\$83.77	\$82.53	(\$1.24)	-1.6%
Cedar												
Jack Pine	\$145.76	\$138.95	\$112.00	\$89.56	\$105.00	\$118.77	\$139.76	\$109.56	\$109.34	\$105.86	(\$3.48)	-3.2%
Red Pine (b)	\$140.46	\$121.15	\$126.48	\$148.33	\$177.16	\$135.87	\$142.72	\$144.41	\$143.27	\$128.10	(\$15.17)	-10.5%
White Pine		\$106.66	\$112.79	\$121.29	\$88.92	\$116.02	\$82.28	\$127.44	\$100.32	\$109.90	\$9.58	7.5%
MBF Composite	\$145.88	\$121.59	\$130.39	\$156.53	\$165.13	\$133.99	\$128.87	\$134.00	\$144.87	\$125.95	(\$18.92)	-14.1%

a) Scribner scale.

b) Includes white pine through 2011.

Historical Sales Values

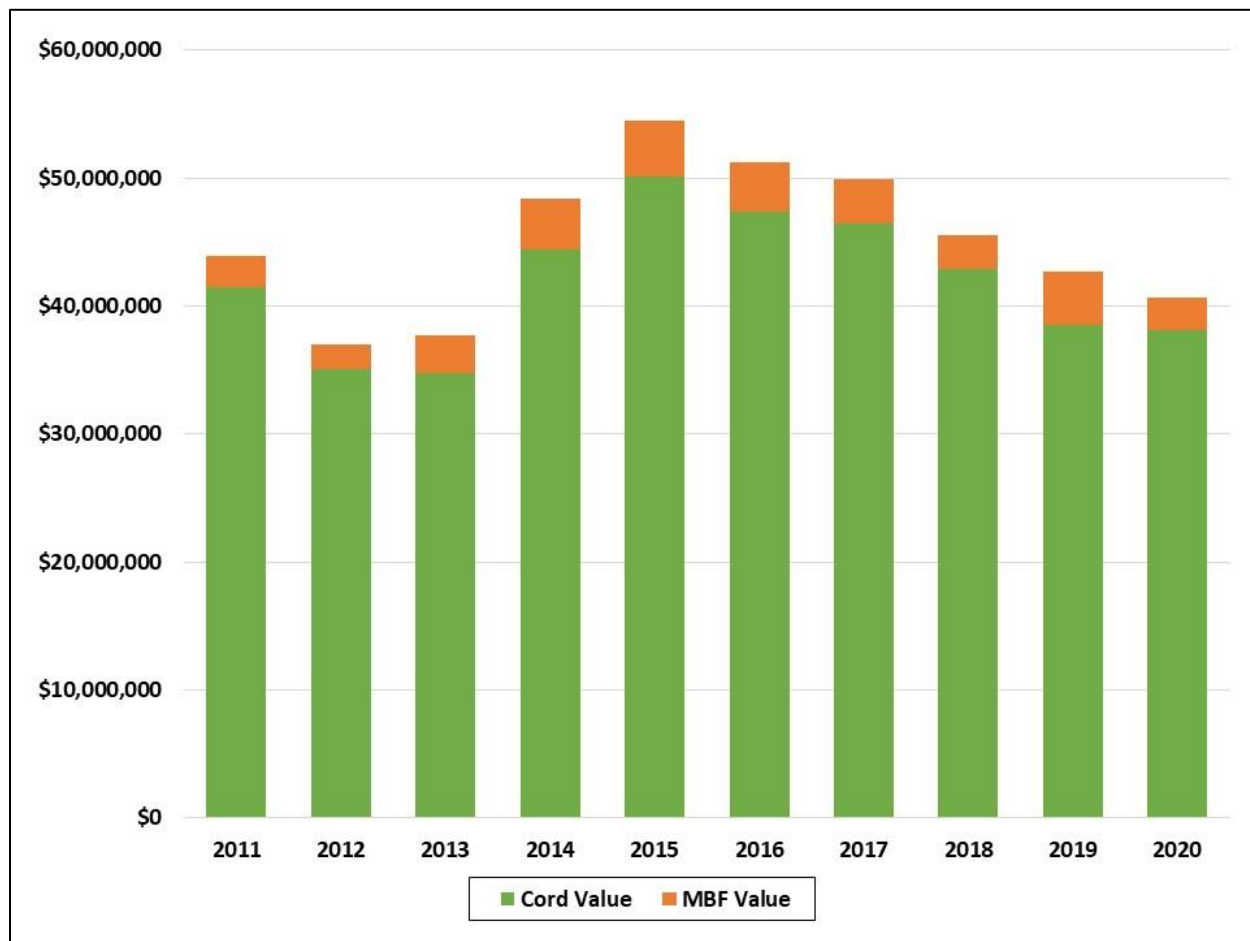


Figure 6: Minnesota public agencies value of cord and sawtimber products sold, 2011-2020. (a)
a) Product categories: sawtimber, pulp & bolts, and pulpwood.

Table 4: Minnesota public agencies stumpage value sold, 2010-2019.

Year	Cord Value	MBF Value	Total Value	Δ\$ YoY	Δ% YoY
2011	\$41,490,200	\$2,394,396	\$43,884,596	---	---
2012	\$35,047,126	\$1,952,204	\$36,999,330	(\$6,885,266)	-15.7%
2013	\$34,731,261	\$3,002,852	\$37,734,113	\$734,783	2.0%
2014	\$44,457,180	\$3,887,081	\$48,344,261	\$10,610,148	28.1%
2015	\$50,112,024	\$4,369,446	\$54,481,471	\$6,137,210	12.7%
2016	\$47,327,421	\$3,898,130	\$51,225,551	(\$3,255,920)	-6.0%
2017	\$46,464,399	\$3,479,238	\$49,943,637	(\$1,281,915)	-2.5%
2018	\$42,903,113	\$2,624,607	\$45,527,720	(\$4,415,916)	-8.8%
2019	\$38,490,782	\$4,220,263	\$42,711,044	(\$2,816,676)	-6.2%
2020	\$38,153,471	\$2,505,732	\$40,659,203	(\$2,051,841)	-4.8%

Historical Sales Volumes

In 2020, Minnesota public agencies sold 1,604,238 cord equivalents of sawtimber, pulp & bolts, and pulpwood compared to sales of 1,659,817 cord equivalents in 2019, a sales volume decrease of 55,579 cord equivalents or 3.3 percent year-over-year (Figure 7, Table 5, page 10). In 2020, aspen/balm of Gilead sold volume increased to 808,412 cords from 800,258 cords in 2019, an 8,154-cord or one (1) percent increase year-over-year. In 2020, pine volume sold decreased to 211,770 cord equivalents from 237,315 cord equivalents in 2019, a 25,546-cord or 10.8 percent decrease. In 2020, spruce volume sold decreased to 161,935 cord equivalents from 168,165 cord equivalents in 2019, a 6,230-cord or 3.7 percent decrease.

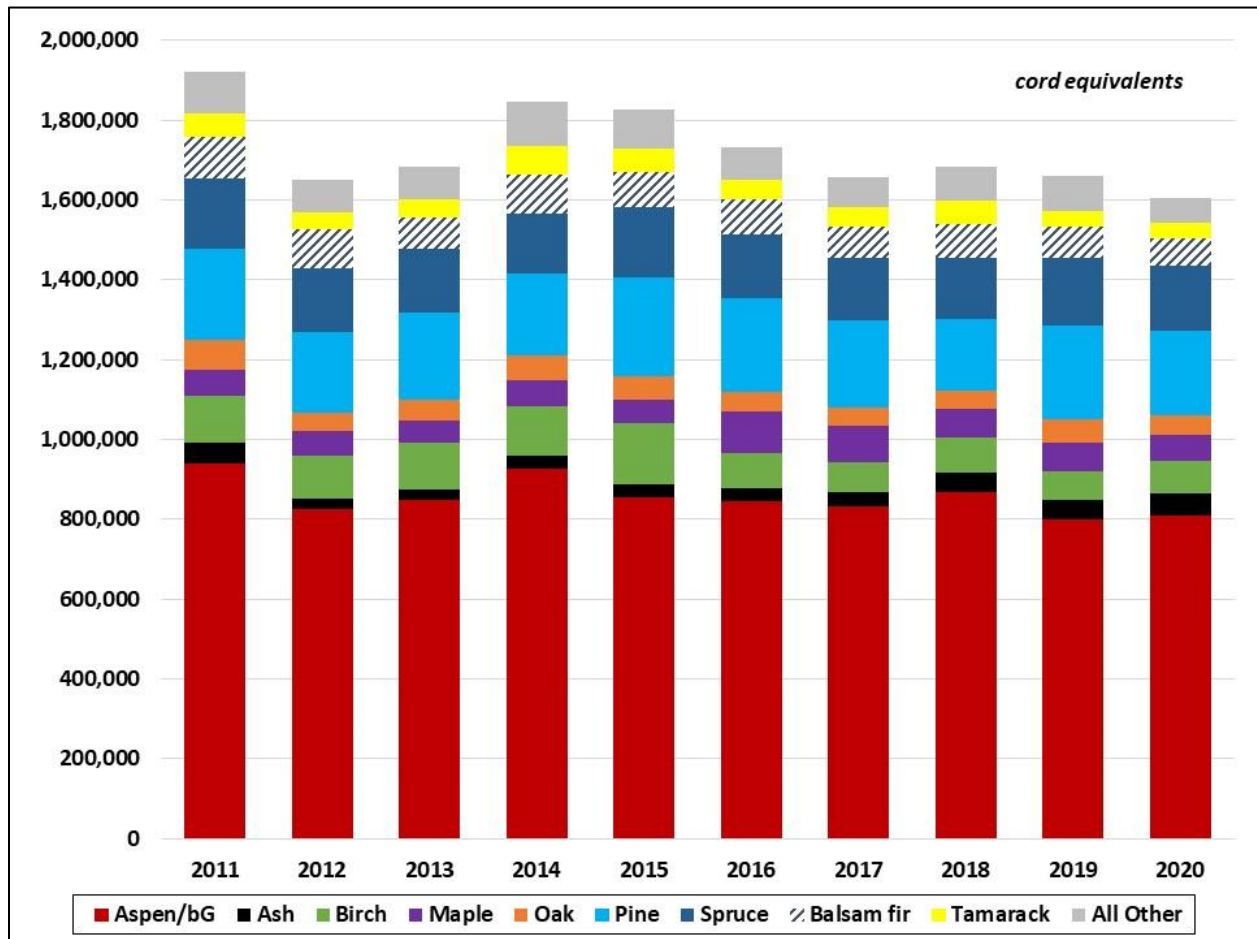


Figure 7: All public agencies volume sold by species group, 2011-2020. (a)

a) Product categories: sawtimber, pulp & bolts, and pulpwood.

Table 5: Minnesota public agencies volume sold by species group in cord equivalents, 2011-2020. (a)

Year	Aspen/bG	Ash	Birch	Maple	Oak	Pine	Spruce	Balsam fir	Tamarack	All Other	Total Sold
2011	940,669	50,223	119,533	63,752	74,256	227,487	176,260	106,658	58,118	104,144	1,921,100
2012	826,340	24,979	107,629	60,741	48,525	199,581	160,322	97,256	43,303	81,381	1,650,055
2013	849,626	25,730	114,661	55,874	51,912	220,209	160,644	75,940	45,471	81,498	1,681,563
2014	927,010	32,801	122,493	67,117	62,050	202,962	152,298	95,889	71,717	110,434	1,844,771
2015	855,460	32,223	153,171	59,020	59,129	247,082	174,975	88,934	59,133	95,955	1,825,081
2016	845,524	30,523	89,247	105,016	47,710	234,485	159,245	89,715	47,926	83,316	1,732,707
2017	830,713	38,434	75,171	90,992	44,143	217,267	158,623	77,439	50,127	74,922	1,657,831
2018	869,353	45,762	88,672	72,080	44,965	178,919	156,359	84,440	56,198	85,993	1,682,741
2019	800,258	47,100	73,902	71,450	56,122	237,315	168,165	76,970	40,868	87,666	1,659,817
2020	808,412	57,387	78,960	67,231	48,980	211,770	161,935	68,331	40,214	61,018	1,604,238
20/19 Δ\$	8,154	10,287	5,058	(4,219)	(7,142)	(25,546)	(6,230)	(8,639)	(654)	(26,649)	(55,579)
20/19 Δ%	1.0%	21.8%	6.8%	-5.9%	-12.7%	-10.8%	-3.7%	-11.2%	-1.6%	-30.4%	-3.3%

a) Product categories: sawtimber, pulp & bolts, and pulpwood.

Data and Methods

This report presents average stumpage prices received by all Minnesota public agencies for the following product classifications: sawtimber, pulp & bolts, pulpwood, fuelwood, and biomass. All data are self-reported by individual agency representatives facilitated by a DNR-led survey. Price and volume data and summary analyses presented in this report may be useful for determining the total volume and value of stumpage sold and for comparing relative volumes and values of stumpage sold over time.

DISCLAIMER—Public agencies follow different fiscal years and there is some variability in product specifications, e.g. sawtimber, pulp & bolts, pulpwood, fuelwood, and biomass.

The reporting period for each agency is included as part of the agencies information. The fiscal year used by the counties is the same as the calendar year. The state's (Minnesota DNR Forestry) fiscal year runs from July 1 to June 30. To make the data reported more consistent with the other agencies, state data included in the report is for **CY2020**. Federal agencies (USFS and BIA) fiscal year runs from October 1 – September 30. However, USDI-BIA data is reported by calendar year.

Federal agencies softwood sawtimber specifications include bolts to a six-inch top dib and hardwood bolts to an eight-inch top dib. Virtually all other agencies report pulp and bolts as a standalone product category for species that are frequently purchased by sawmills. Self-reported product category volumes and values are “normalized”, at the discretion of the state forest economist, to account for variability in self-reported product specifications. In addition, some agencies report their data based on timber appraisal estimates from timber sales sold while others report based on actual scale receipts from timber harvested and scaled. The reporting basis for each agency is noted in the report.

The reader should use caution when comparing the prices shown in this report with actual prices received or expected on a specific timber sale. Individual sale prices may vary significantly (± 30 percent or more) from the averages shown in this report due to variability in local markets, road access costs, haul distance, sale/site specific conditions, and operational constraints.

Definitions

Average price—volume weighted average, equals total value divided by total volume for each listed species group and product classification.

Biomass—dead trees and logging residues including tops, limbs, and cull reported in green tons.

Board foot—a piece of wood 1” thick by 12” long by 12” wide.

Bolt—short length log, in the Lake States usually 100” in length with minimum 6” top dib. Depending on species and quality, may be suitable for the production of dimensional lumber (2x4s), industrial grade lumber (pallets), for manufacturing turned forest products, or for peeling.

Inflation Index—base year 2000=100, indexed to general price changes as measured by the Implicit Price Deflator for Gross Domestic Product (GDP) compiled by the U.S. Department of Commerce, Bureau of Economic Analysis.

Cord (Standard)—cubic volume measure 4-feet wide by 4-feet high by 8-feet in length, or equivalent containing 128 cubic feet of well stacked roundwood, including bark and air space, with an average of 79 cubic feet of solid wood. By state statute, fuelwood is measured in standard cords.

Cord (100-inch)—cubic volume measure 4-feet wide by 4-feet high by 8.3-feet (100-inch) in length, or equivalent containing 133.3 cubic feet of well stacked roundwood, including bark and air space, with an average of 82.3 cubic feet solid wood. In Minnesota, the vast majority of roundwood products are cut to 100-inch in length.

Mbf—one thousand board feet; stumpage volume measured using Scribner log or tree scale.

Mbf Composite Price Index—base year 2000=100, volume weighted (total all-species MBF value divided by total all-species MBF volume) sawtimber price index.

MMbf—one million board feet; stumpage volume measured using Scribner log or tree scale.

Pulpwood—stem suitable for fiber used for paper and oriented strand board (OSB) manufacturing.

Pulp & Bolts—stem containing the mixed products of pulpwood and bolts.

Sawtimber—stem suitable for production of graded boards and/or dimension lumber.

Stumpage—value paid to a landowner to harvest standing timber.

Contact

Don Deckard, Ph.D., State Forest Economist
MNDNR Division of Forestry
500 Lafayette Road North
Saint Paul, Minnesota 55155-4044
Desk: (651) 259-5287
Email: donald.deckard@state.mn.us

The following tables were produced using Microsoft Access reporting tools.

2020 All Public Agencies Average Sale Prices Summary

All Agencies		Reporting Period: Multiple				Reporting Basis: Multiple				
Species Name	Sawtimber		Pulp and Bolts		Pulpwood		Fuelwood		Biomass	
	MBF	Avg Price	Cords	Avg Price	Cords	Avg Price	Cords	Avg Price	Tons	Avg Price
Aspen	0.0	\$0.00	7,370.0	\$37.54	768,587.8	\$30.07	100.0	\$5.00	0.0	\$0.00
Balm of Gilead	0.0	\$0.00	6,421.4	\$31.82	26,032.7	\$23.60	0.0	\$0.00	0.0	\$0.00
Birch Species	7.6	\$51.69	29,916.5	\$18.74	49,028.4	\$8.92	22.6	\$2.76	0.0	\$0.00
Ash Species	8.6	\$61.14	27,531.2	\$11.37	29,839.0	\$5.94	111.3	\$6.00	0.0	\$0.00
Elm Species	7.6	\$72.91	0.2	\$13.50	118.5	\$9.17	0.0	\$0.00	0.0	\$0.00
Oak Species	897.7	\$161.13	42,822.8	\$29.31	4,361.7	\$13.14	576.3	\$2.44	0.0	\$0.00
Basswood	221.1	\$75.34	25,551.4	\$13.05	6,002.6	\$7.34	0.0	\$0.00	0.0	\$0.00
Mixed/Other Hdws	42.0	\$67.78	12,928.9	\$12.37	12,131.0	\$11.05	16,974.1	\$1.39	0.0	\$0.00
Balsam fir	0.0	\$0.00	15,228.1	\$18.46	53,102.8	\$9.90	165.0	\$1.00	0.0	\$0.00
White Spruce	1,004.1	\$82.53	30,397.5	\$26.40	28,264.8	\$14.48	111.1	\$2.00	0.0	\$0.00
Black Spruce	28.9	\$78.32	0.0	\$0.00	101,206.3	\$20.84	490.0	\$1.01	0.0	\$0.00
Tamarack	0.0	\$0.00	9,819.0	\$10.40	30,395.2	\$5.53	3,227.4	\$3.24	0.0	\$0.00
White Cedar	0.0	\$0.00	191.2	\$21.25	2,262.6	\$5.72	0.0	\$0.00	0.0	\$0.00
Jack Pine	58.0	\$105.86	39,019.7	\$25.61	4,233.3	\$17.82	1,320.1	\$2.41	0.0	\$0.00
Red Pine	17,192.0	\$128.10	100,453.7	\$36.93	24,645.7	\$10.00	100.0	\$2.50	0.0	\$0.00
White Pine	403.6	\$109.90	7,295.8	\$29.77	814.2	\$5.57	0.0	\$0.00	0.0	\$0.00
Maple Species	23.9	\$94.29	27,925.7	\$13.84	39,257.7	\$10.38	3.0	\$2.00	0.0	\$0.00
Mixed Species	0.0	\$0.00	133.7	\$19.96	1,156.2	\$7.61	737.0	\$3.87	17,133.4	\$0.79
All Agencies: All Species	19,895.1	\$125.95	383,006.8	\$25.09	1,181,440.5	\$24.16	23,937.9	\$1.83	17,133.4	\$0.79

Average Sale Prices Reported by Agency

MINNESOTA COUNTIES 2020

Agency Name: Aikin Co.			Reporting Period: 01/20 to 12/20				Reporting Basis: Appraisal Reports			
Species Name	Sawtimber		Pulp and Bolts		Pulpwood		Fuelwood		Biomass	
	MBF	Avg Price	Cords	Avg Price	Cords	Avg Price	Cords	Avg Price	Tons	Avg Price
Aspen	0.0	\$0.00	0.0	\$0.00	22,735.4	\$31.76	0.0	\$0.00	0.0	\$0.00
Balm of Gilead	0.0	\$0.00	0.0	\$0.00	0.0	\$0.00	0.0	\$0.00	0.0	\$0.00
Birch Species	6.0	\$44.10	1,200.0	\$9.67	36.0	\$5.75	0.0	\$0.00	0.0	\$0.00
Ash Species	0.0	\$0.00	0.0	\$0.00	5,251.5	\$4.51	0.0	\$0.00	0.0	\$0.00
Elm Species	0.0	\$0.00	0.0	\$0.00	0.0	\$0.00	0.0	\$0.00	0.0	\$0.00
Oak Species	258.5	\$77.67	2,499.3	\$13.09	530.0	\$12.46	0.0	\$0.00	0.0	\$0.00
Basswood	42.5	\$67.17	3,509.0	\$8.92	1.0	\$8.00	0.0	\$0.00	0.0	\$0.00
Mixed/Other Hdwds	13.0	\$58.78	5,750.0	\$10.33	357.0	\$8.51	683.0	\$7.47	0.0	\$0.00
Balsam fir	0.0	\$0.00	0.0	\$0.00	97.0	\$18.95	0.0	\$0.00	0.0	\$0.00
White Spruce	0.0	\$0.00	575.0	\$31.50	20.0	\$20.88	0.0	\$0.00	0.0	\$0.00
Black Spruce	0.0	\$0.00	0.0	\$0.00	475.0	\$12.13	0.0	\$0.00	0.0	\$0.00
Tamarack	0.0	\$0.00	0.0	\$0.00	1,180.0	\$6.00	5.0	\$5.00	0.0	\$0.00
White Cedar	0.0	\$0.00	0.0	\$0.00	0.0	\$0.00	0.0	\$0.00	0.0	\$0.00
Jack Pine	0.0	\$0.00	105.0	\$35.16	0.0	\$0.00	0.0	\$0.00	0.0	\$0.00
Red Pine	0.0	\$0.00	960.0	\$52.04	0.0	\$0.00	0.0	\$0.00	0.0	\$0.00
White Pine	0.0	\$0.00	0.0	\$0.00	0.0	\$0.00	0.0	\$0.00	0.0	\$0.00
Maple Species	0.0	\$0.00	6,648.0	\$9.42	1,295.0	\$6.93	0.0	\$0.00	0.0	\$0.00
Mixed Species	0.0	\$0.00	0.0	\$0.00	133.2	\$19.33	13.0	\$9.62	0.0	\$0.00
Aikin Co.:All Species	320.0	\$74.88	21,246.3	\$12.68	32,111.1	\$24.36	701.0	\$7.49	0.0	\$0.00

Agency Name: Becker Co.**Reporting Period: 01/20 to 12/20****Reporting Basis: Appraisal Reports**

<u>Species Name</u>	Sawtimber		Pulp and Bolts		Pulpwood		Fuelwood		Biomass	
	<u>MBF</u>	<u>Avg Price</u>	<u>Cords</u>	<u>Avg Price</u>	<u>Cords</u>	<u>Avg Price</u>	<u>Cords</u>	<u>Avg Price</u>	<u>Tons</u>	<u>Avg Price</u>
Aspen	0.0	\$0.00	0.0	\$0.00	5,585.0	\$31.19	0.0	\$0.00	0.0	\$0.00
Balm of Gilead	0.0	\$0.00	0.0	\$0.00	0.0	\$0.00	0.0	\$0.00	0.0	\$0.00
Birch Species	0.0	\$0.00	2,230.0	\$14.64	0.0	\$0.00	0.0	\$0.00	0.0	\$0.00
Ash Species	0.0	\$0.00	0.0	\$0.00	0.0	\$0.00	0.0	\$0.00	0.0	\$0.00
Elm Species	0.0	\$0.00	0.0	\$0.00	0.0	\$0.00	0.0	\$0.00	0.0	\$0.00
Oak Species	0.0	\$0.00	917.0	\$22.42	25.0	\$18.00	0.0	\$0.00	0.0	\$0.00
Basswood	0.0	\$0.00	15.0	\$14.40	0.0	\$0.00	0.0	\$0.00	0.0	\$0.00
Mixed/Other Hdws	0.0	\$0.00	50.0	\$23.52	0.0	\$0.00	0.0	\$0.00	0.0	\$0.00
Balsam fir	0.0	\$0.00	369.0	\$17.28	0.0	\$0.00	0.0	\$0.00	0.0	\$0.00
White Spruce	0.0	\$0.00	0.0	\$0.00	80.0	\$15.84	0.0	\$0.00	0.0	\$0.00
Black Spruce	0.0	\$0.00	0.0	\$0.00	0.0	\$0.00	0.0	\$0.00	0.0	\$0.00
Tamarack	0.0	\$0.00	160.0	\$8.06	0.0	\$0.00	0.0	\$0.00	0.0	\$0.00
White Cedar	0.0	\$0.00	0.0	\$0.00	0.0	\$0.00	0.0	\$0.00	0.0	\$0.00
Jack Pine	0.0	\$0.00	1,040.0	\$18.18	0.0	\$0.00	0.0	\$0.00	0.0	\$0.00
Red Pine	0.0	\$0.00	200.0	\$29.40	0.0	\$0.00	0.0	\$0.00	0.0	\$0.00
White Pine	0.0	\$0.00	10.0	\$14.00	0.0	\$0.00	0.0	\$0.00	0.0	\$0.00
Maple Species	0.0	\$0.00	0.0	\$0.00	95.0	\$13.05	0.0	\$0.00	0.0	\$0.00
Mixed Species	0.0	\$0.00	0.0	\$0.00	0.0	\$0.00	0.0	\$0.00	0.0	\$0.00
Becker Co.: All Species	0.0	\$0.00	4,991.0	\$17.47	5,785.0	\$30.62	0.0	\$0.00	0.0	\$0.00

Agency Name: Beltrami Co.**Reporting Period: 01/20 to 12/20****Reporting Basis: Appraisal Reports**

<u>Species Name</u>	Sawtimber		Pulp and Bolts		Pulpwood		Fuelwood		Biomass	
	<u>MBF</u>	<u>Avg Price</u>	<u>Cords</u>	<u>Avg Price</u>	<u>Cords</u>	<u>Avg Price</u>	<u>Cords</u>	<u>Avg Price</u>	<u>Tons</u>	<u>Avg Price</u>
Aspen	0.0	\$0.00	0.0	\$0.00	13,864.0	\$35.83	0.0	\$0.00	0.0	\$0.00
Balm of Gilead	0.0	\$0.00	0.0	\$0.00	350.0	\$31.31	0.0	\$0.00	0.0	\$0.00
Birch Species	0.0	\$0.00	0.0	\$0.00	701.0	\$10.78	0.0	\$0.00	0.0	\$0.00
Ash Species	0.0	\$0.00	0.0	\$0.00	315.0	\$11.38	0.0	\$0.00	0.0	\$0.00
Elm Species	0.0	\$0.00	0.0	\$0.00	0.0	\$0.00	0.0	\$0.00	0.0	\$0.00
Oak Species	0.0	\$0.00	100.0	\$15.83	451.0	\$9.73	0.0	\$0.00	0.0	\$0.00
Basswood	0.0	\$0.00	265.0	\$24.93	1,421.0	\$10.20	0.0	\$0.00	0.0	\$0.00
Mixed/Other Hdws	0.0	\$0.00	0.0	\$0.00	873.0	\$8.93	590.0	\$2.50	0.0	\$0.00
Balsam fir	0.0	\$0.00	0.0	\$0.00	982.0	\$12.88	0.0	\$0.00	0.0	\$0.00
White Spruce	0.0	\$0.00	243.0	\$23.51	28.0	\$13.80	0.0	\$0.00	0.0	\$0.00
Black Spruce	0.0	\$0.00	0.0	\$0.00	76.0	\$14.58	0.0	\$0.00	0.0	\$0.00
Tamarack	0.0	\$0.00	0.0	\$0.00	1,290.0	\$4.77	35.0	\$2.00	0.0	\$0.00
White Cedar	0.0	\$0.00	0.0	\$0.00	0.0	\$0.00	0.0	\$0.00	0.0	\$0.00
Jack Pine	0.0	\$0.00	1,104.0	\$31.70	3,342.0	\$20.32	299.0	\$4.00	0.0	\$0.00
Red Pine	175.0	\$136.87	2,938.6	\$49.28	2,984.0	\$17.52	0.0	\$0.00	0.0	\$0.00
White Pine	15.0	\$156.00	0.0	\$0.00	10.0	\$8.00	0.0	\$0.00	0.0	\$0.00
Maple Species	0.0	\$0.00	0.0	\$0.00	915.0	\$11.91	0.0	\$0.00	0.0	\$0.00
Mixed Species	0.0	\$0.00	0.0	\$0.00	223.0	\$9.93	0.0	\$0.00	0.0	\$0.00
Beltrami Co. All Species	190.0	\$138.38	4,650.6	\$41.65	27,825.0	\$25.13	924.0	\$2.97	0.0	\$0.00

Agency Name: Carlton Co.**Reporting Period: 01/20 to 12/20****Reporting Basis: Appraisal Reports**

<u>Species Name</u>	Sawtimber		Pulp and Bolts		Pulpwood		Fuelwood		Biomass	
	<u>MBF</u>	<u>Avg Price</u>	<u>Cords</u>	<u>Avg Price</u>	<u>Cords</u>	<u>Avg Price</u>	<u>Cords</u>	<u>Avg Price</u>	<u>Tons</u>	<u>Avg Price</u>
Aspen	0.0	\$0.00	0.0	\$0.00	10,401.0	\$31.81	0.0	\$0.00	0.0	\$0.00
Balm of Gilead	0.0	\$0.00	0.0	\$0.00	0.0	\$0.00	0.0	\$0.00	0.0	\$0.00
Birch Species	0.0	\$0.00	0.0	\$0.00	0.0	\$0.00	0.0	\$0.00	0.0	\$0.00
Ash Species	0.0	\$0.00	0.0	\$0.00	0.0	\$0.00	0.0	\$0.00	0.0	\$0.00
Elm Species	0.0	\$0.00	0.0	\$0.00	0.0	\$0.00	0.0	\$0.00	0.0	\$0.00
Oak Species	0.0	\$0.00	315.0	\$25.00	0.0	\$0.00	0.0	\$0.00	0.0	\$0.00
Basswood	0.0	\$0.00	0.0	\$0.00	0.0	\$0.00	0.0	\$0.00	0.0	\$0.00
Mixed/Other Hdws	0.0	\$0.00	3,920.0	\$12.48	0.0	\$0.00	0.0	\$0.00	0.0	\$0.00
Balsam fir	0.0	\$0.00	0.0	\$0.00	95.0	\$4.64	0.0	\$0.00	0.0	\$0.00
White Spruce	0.0	\$0.00	0.0	\$0.00	0.0	\$0.00	0.0	\$0.00	0.0	\$0.00
Black Spruce	0.0	\$0.00	0.0	\$0.00	0.0	\$0.00	5.0	\$2.00	0.0	\$0.00
Tamarack	0.0	\$0.00	0.0	\$0.00	300.0	\$5.06	0.0	\$0.00	0.0	\$0.00
White Cedar	0.0	\$0.00	0.0	\$0.00	0.0	\$0.00	0.0	\$0.00	0.0	\$0.00
Jack Pine	0.0	\$0.00	0.0	\$0.00	0.0	\$0.00	0.0	\$0.00	0.0	\$0.00
Red Pine	0.0	\$0.00	855.0	\$28.13	0.0	\$0.00	0.0	\$0.00	0.0	\$0.00
White Pine	0.0	\$0.00	0.0	\$0.00	0.0	\$0.00	0.0	\$0.00	0.0	\$0.00
Maple Species	0.0	\$0.00	0.0	\$0.00	0.0	\$0.00	0.0	\$0.00	0.0	\$0.00
Mixed Species	0.0	\$0.00	0.0	\$0.00	0.0	\$0.00	0.0	\$0.00	0.0	\$0.00
Carlton Co.:All Species	0.0	\$0.00	5,090.0	\$15.89	10,796.0	\$30.83	5.0	\$2.00	0.0	\$0.00

2020 Minnesota Public Agencies Stumpage Price Review

Agency Name: Cass Co.

Reporting Period: 01/20 to 12/20

Reporting Basis: Appraisal Reports

<u>Species Name</u>	Sawtimber		Pulp and Bolts		Pulpwood		Fuelwood		Biomass	
	<u>MBF</u>	<u>Avg Price</u>	<u>Cords</u>	<u>Avg Price</u>	<u>Cords</u>	<u>Avg Price</u>	<u>Cords</u>	<u>Avg Price</u>	<u>Tons</u>	<u>Avg Price</u>
Aspen	0.0	\$0.00	0.0	\$0.00	43,028.0	\$35.88	0.0	\$0.00	0.0	\$0.00
Balm of Gilead	0.0	\$0.00	0.0	\$0.00	89.0	\$17.00	0.0	\$0.00	0.0	\$0.00
Birch Species	0.0	\$0.00	4,895.0	\$20.39	0.0	\$0.00	0.0	\$0.00	0.0	\$0.00
Ash Species	0.0	\$0.00	1,453.0	\$12.18	0.0	\$0.00	0.0	\$0.00	0.0	\$0.00
Elm Species	0.0	\$0.00	0.0	\$0.00	0.0	\$0.00	0.0	\$0.00	0.0	\$0.00
Oak Species	0.0	\$0.00	10,722.0	\$33.56	0.0	\$0.00	0.0	\$0.00	0.0	\$0.00
Basswood	0.0	\$0.00	2,968.0	\$18.87	0.0	\$0.00	0.0	\$0.00	0.0	\$0.00
Mixed/Other Hdws	0.0	\$0.00	0.0	\$0.00	0.0	\$0.00	380.0	\$2.50	0.0	\$0.00
Balsam fir	0.0	\$0.00	0.0	\$0.00	418.0	\$12.49	0.0	\$0.00	0.0	\$0.00
White Spruce	0.0	\$0.00	166.0	\$25.25	0.0	\$0.00	0.0	\$0.00	0.0	\$0.00
Black Spruce	0.0	\$0.00	0.0	\$0.00	0.0	\$0.00	0.0	\$0.00	0.0	\$0.00
Tamarack	0.0	\$0.00	0.0	\$0.00	0.0	\$0.00	0.0	\$0.00	0.0	\$0.00
White Cedar	0.0	\$0.00	0.0	\$0.00	0.0	\$0.00	0.0	\$0.00	0.0	\$0.00
Jack Pine	0.0	\$0.00	1,399.0	\$26.21	0.0	\$0.00	0.0	\$0.00	0.0	\$0.00
Red Pine	304.0	\$115.02	1,785.0	\$42.08	0.0	\$0.00	0.0	\$0.00	0.0	\$0.00
White Pine	19.8	\$80.00	13.0	\$29.21	0.0	\$0.00	0.0	\$0.00	0.0	\$0.00
Maple Species	0.0	\$0.00	3,283.0	\$16.50	0.0	\$0.00	0.0	\$0.00	0.0	\$0.00
Mixed Species	0.0	\$0.00	2.0	\$16.60	0.0	\$0.00	0.0	\$0.00	0.0	\$0.00
Cass Co.: All Species	323.8	\$112.88	26,686.0	\$26.38	43,535.0	\$35.61	380.0	\$2.50	0.0	\$0.00

Agency Name: Clearwater Co.**Reporting Period: 01/20 to 12/20****Reporting Basis: Appraisal Reports**

<u>Species Name</u>	Sawtimber		Pulp and Bolts		Pulpwood		Fuelwood		Biomass	
	<u>MBF</u>	<u>Avg Price</u>	<u>Cords</u>	<u>Avg Price</u>	<u>Cords</u>	<u>Avg Price</u>	<u>Cords</u>	<u>Avg Price</u>	<u>Tons</u>	<u>Avg Price</u>
Aspen	0.0	\$0.00	0.0	\$0.00	5,319.0	\$33.78	0.0	\$0.00	0.0	\$0.00
Balm of Gilead	0.0	\$0.00	0.0	\$0.00	0.0	\$0.00	0.0	\$0.00	0.0	\$0.00
Birch Species	0.0	\$0.00	1,195.0	\$15.91	0.0	\$0.00	0.0	\$0.00	0.0	\$0.00
Ash Species	3.8	\$50.00	0.0	\$0.00	16.0	\$8.28	0.0	\$0.00	0.0	\$0.00
Elm Species	0.0	\$0.00	0.0	\$0.00	0.0	\$0.00	0.0	\$0.00	0.0	\$0.00
Oak Species	81.5	\$68.26	0.0	\$0.00	912.0	\$15.81	0.0	\$0.00	0.0	\$0.00
Basswood	153.9	\$78.74	1,068.0	\$17.01	0.0	\$0.00	0.0	\$0.00	0.0	\$0.00
Mixed/Other Hdws	0.0	\$0.00	0.0	\$0.00	118.0	\$13.55	0.0	\$0.00	0.0	\$0.00
Balsam fir	0.0	\$0.00	0.0	\$0.00	39.0	\$5.25	0.0	\$0.00	0.0	\$0.00
White Spruce	22.5	\$138.24	0.0	\$0.00	9.0	\$16.34	0.0	\$0.00	0.0	\$0.00
Black Spruce	0.0	\$0.00	0.0	\$0.00	3.0	\$8.93	0.0	\$0.00	0.0	\$0.00
Tamarack	0.0	\$0.00	0.0	\$0.00	0.0	\$0.00	0.0	\$0.00	0.0	\$0.00
White Cedar	0.0	\$0.00	0.0	\$0.00	0.0	\$0.00	0.0	\$0.00	0.0	\$0.00
Jack Pine	0.0	\$0.00	0.0	\$0.00	0.0	\$0.00	0.0	\$0.00	0.0	\$0.00
Red Pine	182.3	\$136.50	0.0	\$0.00	372.0	\$12.87	0.0	\$0.00	0.0	\$0.00
White Pine	0.0	\$0.00	0.0	\$0.00	0.0	\$0.00	0.0	\$0.00	0.0	\$0.00
Maple Species	14.1	\$86.38	612.0	\$16.69	0.0	\$0.00	0.0	\$0.00	0.0	\$0.00
Mixed Species	0.0	\$0.00	0.0	\$0.00	0.0	\$0.00	0.0	\$0.00	0.0	\$0.00
Clearwater Co.: All Species	458.1	\$102.78	2,875.0	\$16.49	6,788.0	\$29.61	0.0	\$0.00	0.0	\$0.00

Agency Name: Crow Wing Co.Reporting

Period: 01/20 to 12/20

Reporting Basis: Appraisal Reports

Species Name	Sawtimber		Pulp and Bolts		Pulpwood		Fuelwood		Biomass	
	MBF	Avg Price	Cords	Avg Price	Cords	Avg Price	Cords	Avg Price	Tons	Avg Price
Aspen	0.0	\$0.00	0.0	\$0.00	14,975.0	\$40.57	0.0	\$0.00	0.0	\$0.00
Balm of Gilead	0.0	\$0.00	0.0	\$0.00	0.0	\$0.00	0.0	\$0.00	0.0	\$0.00
Birch Species	0.0	\$0.00	2,781.0	\$21.75	0.0	\$0.00	0.0	\$0.00	0.0	\$0.00
Ash Species	0.0	\$0.00	665.0	\$12.29	0.0	\$0.00	0.0	\$0.00	0.0	\$0.00
Elm Species	0.0	\$0.00	0.0	\$0.00	0.0	\$0.00	0.0	\$0.00	0.0	\$0.00
Oak Species	0.0	\$0.00	6,444.0	\$30.84	253.0	\$17.60	0.0	\$0.00	0.0	\$0.00
Basswood	0.0	\$0.00	1,227.0	\$17.56	10.0	\$12.50	0.0	\$0.00	0.0	\$0.00
Mixed/Other Hdws	0.0	\$0.00	0.0	\$0.00	258.0	\$12.72	0.0	\$0.00	0.0	\$0.00
Balsam fir	0.0	\$0.00	0.0	\$0.00	0.0	\$0.00	165.0	\$1.00	0.0	\$0.00
White Spruce	0.0	\$0.00	0.0	\$0.00	0.0	\$0.00	0.0	\$0.00	0.0	\$0.00
Black Spruce	0.0	\$0.00	0.0	\$0.00	0.0	\$0.00	485.0	\$1.00	0.0	\$0.00
Tamarack	0.0	\$0.00	0.0	\$0.00	0.0	\$0.00	100.0	\$1.00	0.0	\$0.00
White Cedar	0.0	\$0.00	0.0	\$0.00	0.0	\$0.00	0.0	\$0.00	0.0	\$0.00
Jack Pine	0.0	\$0.00	181.0	\$26.50	0.0	\$0.00	0.0	\$0.00	0.0	\$0.00
Red Pine	1,141.0	\$124.93	0.0	\$0.00	0.0	\$0.00	0.0	\$0.00	0.0	\$0.00
White Pine	0.0	\$0.00	0.0	\$0.00	0.0	\$0.00	0.0	\$0.00	0.0	\$0.00
Maple Species	0.0	\$0.00	0.0	\$0.00	2,993.0	\$12.28	0.0	\$0.00	0.0	\$0.00
Mixed Species	0.0	\$0.00	0.0	\$0.00	0.0	\$0.00	0.0	\$0.00	0.0	\$0.00
Crow Wing Co.: All Species	1,141.0	\$124.93	11,298.0	\$26.00	18,489.0	\$35.27	750.0	\$1.00	0.0	\$0.00

Agency Name: Hubbard Co.

Reporting Period: 01/20 to 12/20

Reporting Basis: Appraisal Reports

Species Name	Sawtimber		Pulp and Bolts		Pulpwood		Fuelwood		Biomass	
	MBF	Avg Price	Cords	Avg Price	Cords	Avg Price	Cords	Avg Price	Tons	Avg Price
Aspen	0.0	\$0.00	7,370.0	\$37.54	12,725.0	\$35.08	0.0	\$0.00	0.0	\$0.00
Balm of Gilead	0.0	\$0.00	0.0	\$0.00	25.0	\$4.82	0.0	\$0.00	0.0	\$0.00
Birch Species	0.0	\$0.00	0.0	\$0.00	3,014.0	\$10.55	0.0	\$0.00	0.0	\$0.00
Ash Species	0.0	\$0.00	0.0	\$0.00	55.0	\$2.79	0.0	\$0.00	0.0	\$0.00
Elm Species	0.0	\$0.00	0.0	\$0.00	0.0	\$0.00	0.0	\$0.00	0.0	\$0.00
Oak Species	0.0	\$0.00	0.0	\$0.00	285.0	\$0.00	0.0	\$0.00	0.0	\$0.00
Basswood	0.0	\$0.00	0.0	\$0.00	485.0	\$6.05	0.0	\$0.00	0.0	\$0.00
Mixed/Other Hdwds	0.0	\$0.00	0.0	\$0.00	0.0	\$0.00	0.0	\$0.00	0.0	\$0.00
Balsam fir	0.0	\$0.00	0.0	\$0.00	760.0	\$12.51	0.0	\$0.00	0.0	\$0.00
White Spruce	125.0	\$92.46	175.0	\$34.57	0.0	\$0.00	0.0	\$0.00	0.0	\$0.00
Black Spruce	0.0	\$0.00	0.0	\$0.00	0.0	\$0.00	0.0	\$0.00	0.0	\$0.00
Tamarack	0.0	\$0.00	0.0	\$0.00	0.0	\$0.00	0.0	\$0.00	0.0	\$0.00
White Cedar	0.0	\$0.00	0.0	\$0.00	0.0	\$0.00	0.0	\$0.00	0.0	\$0.00
Jack Pine	0.0	\$0.00	1,018.0	\$34.94	40.0	\$9.89	0.0	\$0.00	0.0	\$0.00
Red Pine	0.0	\$0.00	2,015.0	\$43.07	1,005.0	\$20.45	0.0	\$0.00	0.0	\$0.00
White Pine	0.0	\$0.00	0.0	\$0.00	0.0	\$0.00	0.0	\$0.00	0.0	\$0.00
Maple Species	0.0	\$0.00	0.0	\$0.00	360.0	\$9.01	0.0	\$0.00	0.0	\$0.00
Mixed Species	0.0	\$0.00	0.0	\$0.00	0.0	\$0.00	0.0	\$0.00	0.0	\$0.00
Hubbard Co.: All Species	125.0	\$92.46	10,578.0	\$38.29	18,754.0	\$27.47	0.0	\$0.00	0.0	\$0.00

Agency Name: Itasca Co.**Reporting Period: 01/20 to 12/20****Reporting Basis: Appraisal Reports**

<u>Species Name</u>	Sawtimber		Pulp and Bolts		Pulpwood		Fuelwood		Biomass	
	<u>MBF</u>	<u>Avg Price</u>	<u>Cords</u>	<u>Avg Price</u>	<u>Cords</u>	<u>Avg Price</u>	<u>Cords</u>	<u>Avg Price</u>	<u>Tons</u>	<u>Avg Price</u>
Aspen	0.0	\$0.00	0.0	\$0.00	44,310.0	\$36.69	0.0	\$0.00	0.0	\$0.00
Balm of Gilead	0.0	\$0.00	0.0	\$0.00	1,028.0	\$24.09	0.0	\$0.00	0.0	\$0.00
Birch Species	0.0	\$0.00	0.0	\$0.00	2,940.0	\$11.49	0.0	\$0.00	0.0	\$0.00
Ash Species	0.0	\$0.00	3,295.0	\$12.21	0.0	\$0.00	0.0	\$0.00	0.0	\$0.00
Elm Species	0.0	\$0.00	0.0	\$0.00	0.0	\$0.00	0.0	\$0.00	0.0	\$0.00
Oak Species	0.0	\$0.00	600.0	\$21.47	0.0	\$0.00	0.0	\$0.00	0.0	\$0.00
Basswood	0.0	\$0.00	1,207.0	\$13.09	0.0	\$0.00	0.0	\$0.00	0.0	\$0.00
Mixed/Other Hdws	0.0	\$0.00	0.0	\$0.00	0.0	\$0.00	21.8	\$0.00	0.0	\$0.00
Balsam fir	0.0	\$0.00	0.0	\$0.00	3,466.0	\$11.51	0.0	\$0.00	0.0	\$0.00
White Spruce	0.0	\$0.00	0.0	\$0.00	0.0	\$0.00	0.0	\$0.00	0.0	\$0.00
Black Spruce	0.0	\$0.00	0.0	\$0.00	11,965.0	\$19.42	0.0	\$0.00	0.0	\$0.00
Tamarack	0.0	\$0.00	0.0	\$0.00	5,054.0	\$4.98	0.0	\$0.00	0.0	\$0.00
White Cedar	0.0	\$0.00	0.0	\$0.00	0.0	\$0.00	0.0	\$0.00	0.0	\$0.00
Jack Pine	0.0	\$0.00	3,690.0	\$29.81	0.0	\$0.00	0.0	\$0.00	0.0	\$0.00
Red Pine	0.0	\$0.00	14,578.0	\$39.02	0.0	\$0.00	0.0	\$0.00	0.0	\$0.00
White Pine	0.0	\$0.00	181.0	\$14.03	0.0	\$0.00	0.0	\$0.00	0.0	\$0.00
Maple Species	0.0	\$0.00	0.0	\$0.00	1,969.0	\$7.68	0.0	\$0.00	0.0	\$0.00
Mixed Species	0.0	\$0.00	0.0	\$0.00	0.0	\$0.00	0.0	\$0.00	0.0	\$0.00
Itasca Co.: All Species	0.0	\$0.00	23,551.0	\$31.86	70,732.0	\$28.23	21.8	\$0.00	0.0	\$0.00

Agency Name: Koochiching Co.

Reporting Period: 01/20 to 12/20

Reporting Basis: Appraisal Reports

Species Name	Sawtimber		Pulp and Bolts		Pulpwood		Fuelwood		Biomass	
	MBF	Avg Price	Cords	Avg Price	Cords	Avg Price	Cords	Avg Price	Tons	Avg Price
Aspen	0.0	\$0.00	0.0	\$0.00	58,200.0	\$31.89	0.0	\$0.00	0.0	\$0.00
Balm of Gilead	0.0	\$0.00	1,770.0	\$33.87	0.0	\$0.00	0.0	\$0.00	0.0	\$0.00
Birch Species	0.0	\$0.00	0.0	\$0.00	2,543.0	\$6.12	0.0	\$0.00	0.0	\$0.00
Ash Species	0.0	\$0.00	0.0	\$0.00	5,261.0	\$6.85	10.0	\$6.00	0.0	\$0.00
Elm Species	0.0	\$0.00	0.0	\$0.00	0.0	\$0.00	0.0	\$0.00	0.0	\$0.00
Oak Species	0.0	\$0.00	0.0	\$0.00	0.0	\$0.00	0.0	\$0.00	0.0	\$0.00
Basswood	0.0	\$0.00	0.0	\$0.00	896.0	\$5.97	0.0	\$0.00	0.0	\$0.00
Mixed/Other Hdws	0.0	\$0.00	0.0	\$0.00	0.0	\$0.00	0.0	\$0.00	0.0	\$0.00
Balsam fir	0.0	\$0.00	0.0	\$0.00	4,957.0	\$8.83	0.0	\$0.00	0.0	\$0.00
White Spruce	0.0	\$0.00	0.0	\$0.00	0.0	\$0.00	0.0	\$0.00	0.0	\$0.00
Black Spruce	0.0	\$0.00	0.0	\$0.00	15,559.0	\$20.87	0.0	\$0.00	0.0	\$0.00
Tamarack	0.0	\$0.00	0.0	\$0.00	4,284.0	\$5.52	0.0	\$0.00	0.0	\$0.00
White Cedar	0.0	\$0.00	0.0	\$0.00	1,061.0	\$4.55	0.0	\$0.00	0.0	\$0.00
Jack Pine	0.0	\$0.00	2,226.0	\$43.10	0.0	\$0.00	0.0	\$0.00	0.0	\$0.00
Red Pine	0.0	\$0.00	2,943.0	\$43.76	0.0	\$0.00	0.0	\$0.00	0.0	\$0.00
White Pine	0.0	\$0.00	65.0	\$23.77	0.0	\$0.00	0.0	\$0.00	0.0	\$0.00
Maple Species	0.0	\$0.00	0.0	\$0.00	783.0	\$6.00	0.0	\$0.00	0.0	\$0.00
Mixed Species	0.0	\$0.00	0.0	\$0.00	0.0	\$0.00	233.0	\$3.00	0.0	\$0.00
Koochiching All Species	0.0	\$0.00	7,004.0	\$40.86	93,544.0	\$24.74	243.0	\$3.13	0.0	\$0.00

Agency Name: Lake Co.

Reporting Period: 01/20 to 12/20

Reporting Basis: Appraisal Reports

<u>Species Name</u>	Sawtimber		Pulp and Bolts		Pulpwood		Fuelwood		Biomass	
	<u>MBF</u>	<u>Avg Price</u>	<u>Cords</u>	<u>Avg Price</u>	<u>Cords</u>	<u>Avg Price</u>	<u>Cords</u>	<u>Avg Price</u>	<u>Tons</u>	<u>Avg Price</u>
Aspen	0.0	\$0.00	0.0	\$0.00	8,609.0	\$24.27	0.0	\$0.00	0.0	\$0.00
Balm of Gilead	0.0	\$0.00	0.0	\$0.00	540.0	\$17.83	0.0	\$0.00	0.0	\$0.00
Birch Species	0.0	\$0.00	0.0	\$0.00	2,121.0	\$10.90	0.0	\$0.00	0.0	\$0.00
Ash Species	0.0	\$0.00	0.0	\$0.00	965.0	\$4.29	0.0	\$0.00	0.0	\$0.00
Elm Species	0.0	\$0.00	0.0	\$0.00	0.0	\$0.00	0.0	\$0.00	0.0	\$0.00
Oak Species	0.0	\$0.00	0.0	\$0.00	20.0	\$9.90	0.0	\$0.00	0.0	\$0.00
Basswood	0.0	\$0.00	0.0	\$0.00	676.0	\$8.70	0.0	\$0.00	0.0	\$0.00
Mixed/Other Hdws	0.0	\$0.00	0.0	\$0.00	0.0	\$0.00	0.0	\$0.00	0.0	\$0.00
Balsam fir	0.0	\$0.00	0.0	\$0.00	1,570.0	\$4.85	0.0	\$0.00	0.0	\$0.00
White Spruce	0.0	\$0.00	0.0	\$0.00	724.0	\$12.87	0.0	\$0.00	0.0	\$0.00
Black Spruce	0.0	\$0.00	0.0	\$0.00	0.0	\$0.00	0.0	\$0.00	0.0	\$0.00
Tamarack	0.0	\$0.00	10.0	\$10.10	0.0	\$0.00	0.0	\$0.00	0.0	\$0.00
White Cedar	0.0	\$0.00	0.0	\$0.00	0.0	\$0.00	0.0	\$0.00	0.0	\$0.00
Jack Pine	0.0	\$0.00	0.0	\$0.00	5.0	\$12.25	0.0	\$0.00	0.0	\$0.00
Red Pine	0.0	\$0.00	0.0	\$0.00	520.0	\$15.64	0.0	\$0.00	0.0	\$0.00
White Pine	0.0	\$0.00	0.0	\$0.00	52.0	\$12.25	0.0	\$0.00	0.0	\$0.00
Maple Species	0.0	\$0.00	4,582.0	\$13.24	0.0	\$0.00	0.0	\$0.00	0.0	\$0.00
Mixed Species	0.0	\$0.00	0.0	\$0.00	0.0	\$0.00	21.0	\$6.00	0.0	\$0.00
Lake Co.: All Species	0.0	\$0.00	4,592.0	\$13.23	15,802.0	\$17.57	21.0	\$6.00	0.0	\$0.00

2020 Minnesota Public Agencies Stumpage Price Review

Agency Name: Pine Co.

Reporting Period: 01/20 to 12/20

Reporting Basis: Appraisal Reports

<u>Species Name</u>	Sawtimber		Pulp and Bolts		Pulpwood		Fuelwood		Biomass	
	<u>MBF</u>	<u>Avg Price</u>	<u>Cords</u>	<u>Avg Price</u>	<u>Cords</u>	<u>Avg Price</u>	<u>Cords</u>	<u>Avg Price</u>	<u>Tons</u>	<u>Avg Price</u>
Aspen	0.0	\$0.00	0.0	\$0.00	5,728.0	\$38.34	0.0	\$0.00	0.0	\$0.00
Balm of Gilead	0.0	\$0.00	0.0	\$0.00	0.0	\$0.00	0.0	\$0.00	0.0	\$0.00
Birch Species	0.0	\$0.00	195.0	\$21.60	0.0	\$0.00	0.0	\$0.00	0.0	\$0.00
Ash Species	0.0	\$0.00	54.0	\$18.44	0.0	\$0.00	0.0	\$0.00	0.0	\$0.00
Elm Species	0.0	\$0.00	0.0	\$0.00	0.0	\$0.00	0.0	\$0.00	0.0	\$0.00
Oak Species	0.0	\$0.00	213.0	\$30.96	0.0	\$0.00	0.0	\$0.00	0.0	\$0.00
Basswood	0.0	\$0.00	0.0	\$0.00	18.0	\$7.50	0.0	\$0.00	0.0	\$0.00
Mixed/Other Hdwds	0.0	\$0.00	0.0	\$0.00	0.0	\$0.00	0.0	\$0.00	0.0	\$0.00
Balsam fir	0.0	\$0.00	0.0	\$0.00	0.0	\$0.00	0.0	\$0.00	0.0	\$0.00
White Spruce	0.0	\$0.00	0.0	\$0.00	0.0	\$0.00	0.0	\$0.00	0.0	\$0.00
Black Spruce	0.0	\$0.00	0.0	\$0.00	0.0	\$0.00	0.0	\$0.00	0.0	\$0.00
Tamarack	0.0	\$0.00	0.0	\$0.00	0.0	\$0.00	0.0	\$0.00	0.0	\$0.00
White Cedar	0.0	\$0.00	0.0	\$0.00	0.0	\$0.00	0.0	\$0.00	0.0	\$0.00
Jack Pine	0.0	\$0.00	0.0	\$0.00	59.0	\$10.86	0.0	\$0.00	0.0	\$0.00
Red Pine	0.0	\$0.00	0.0	\$0.00	0.0	\$0.00	0.0	\$0.00	0.0	\$0.00
White Pine	0.0	\$0.00	0.0	\$0.00	0.0	\$0.00	0.0	\$0.00	0.0	\$0.00
Maple Species	0.0	\$0.00	475.0	\$20.47	0.0	\$0.00	0.0	\$0.00	0.0	\$0.00
Mixed Species	0.0	\$0.00	0.0	\$0.00	9.0	\$13.56	0.0	\$0.00	0.0	\$0.00
Pine Co.: All Species	0.0	\$0.00	937.0	\$22.97	5,814.0	\$37.93	0.0	\$0.00	0.0	\$0.00

Agency Name: St. Louis Co.**Reporting Period: 01/20 to 12/20****Reporting Basis: Appraisal Reports**

<u>Species Name</u>	Sawtimber		Pulp and Bolts		Pulpwood		Fuelwood		Biomass	
	<u>MBF</u>	<u>Avg Price</u>	<u>Cords</u>	<u>Avg Price</u>	<u>Cords</u>	<u>Avg Price</u>	<u>Cords</u>	<u>Avg Price</u>	<u>Tons</u>	<u>Avg Price</u>
Aspen	0.0	\$0.00	0.0	\$0.00	84,618.0	\$30.93	0.0	\$0.00	0.0	\$0.00
Balm of Gilead	0.0	\$0.00	0.0	\$0.00	2,180.0	\$28.19	0.0	\$0.00	0.0	\$0.00
Birch Species	0.0	\$0.00	0.0	\$0.00	16,161.0	\$8.90	0.0	\$0.00	0.0	\$0.00
Ash Species	0.0	\$0.00	0.0	\$0.00	4,593.0	\$4.09	0.0	\$0.00	0.0	\$0.00
Elm Species	0.0	\$0.00	0.0	\$0.00	0.0	\$0.00	0.0	\$0.00	0.0	\$0.00
Oak Species	0.0	\$0.00	0.0	\$0.00	429.0	\$23.37	0.0	\$0.00	0.0	\$0.00
Basswood	0.0	\$0.00	0.0	\$0.00	929.0	\$6.62	0.0	\$0.00	0.0	\$0.00
Mixed/Other Hdwds	0.0	\$0.00	0.0	\$0.00	0.0	\$0.00	0.0	\$0.00	0.0	\$0.00
Balsam fir	0.0	\$0.00	0.0	\$0.00	14,135.0	\$9.66	0.0	\$0.00	0.0	\$0.00
White Spruce	0.0	\$0.00	0.0	\$0.00	6,255.0	\$18.84	0.0	\$0.00	0.0	\$0.00
Black Spruce	0.0	\$0.00	0.0	\$0.00	18,199.0	\$21.70	0.0	\$0.00	0.0	\$0.00
Tamarack	0.0	\$0.00	0.0	\$0.00	3,438.0	\$4.87	0.0	\$0.00	0.0	\$0.00
White Cedar	0.0	\$0.00	0.0	\$0.00	3.0	\$5.00	0.0	\$0.00	0.0	\$0.00
Jack Pine	0.0	\$0.00	3,247.0	\$20.82	0.0	\$0.00	0.0	\$0.00	0.0	\$0.00
Red Pine	0.0	\$0.00	7,235.0	\$27.59	0.0	\$0.00	0.0	\$0.00	0.0	\$0.00
White Pine	0.0	\$0.00	2,549.0	\$29.33	0.0	\$0.00	0.0	\$0.00	0.0	\$0.00
Maple Species	0.0	\$0.00	0.0	\$0.00	11,556.0	\$7.77	0.0	\$0.00	0.0	\$0.00
Mixed Species	0.0	\$0.00	0.0	\$0.00	776.0	\$4.91	0.0	\$0.00	223.0	\$1.00
St. Louis Co.: All Species	0.0	\$0.00	13,031.0	\$26.24	163,272.0	\$22.15	0.0	\$0.00	223.0	\$1.00

MINNESOTA FEDERAL AGENCIES 2019

Agency Name: USDI – BIA

Reporting Period: 01/20 to 12/20

Reporting Basis: Scale Receipts

Species Name	Sawtimber		Pulp and Bolts		Pulpwood		Fuelwood		Biomass	
	MBF	Avg Price	Cords	Avg Price	Cords	Avg Price	Cords	Avg Price	Tons	Avg Price
Aspen	0.0	\$0.00	0.0	\$0.00	22,317.7	\$22.78	0.0	\$0.00	0.0	\$0.00
Balm of Gilead	0.0	\$0.00	0.0	\$0.00	0.0	\$0.00	0.0	\$0.00	0.0	\$0.00
Birch Species	0.0	\$0.00	0.0	\$0.00	767.9	\$10.27	0.0	\$0.00	0.0	\$0.00
Ash Species	0.0	\$0.00	0.0	\$0.00	321.9	\$8.84	0.0	\$0.00	0.0	\$0.00
Elm Species	0.0	\$0.00	0.0	\$0.00	0.0	\$0.00	0.0	\$0.00	0.0	\$0.00
Oak Species	0.0	\$0.00	0.0	\$0.00	0.0	\$0.00	43.5	\$5.70	0.0	\$0.00
Basswood	0.0	\$0.00	177.5	\$13.60	0.0	\$0.00	0.0	\$0.00	0.0	\$0.00
Mixed/Other Hdws	0.0	\$0.00	0.0	\$0.00	12.3	\$4.91	26.3	\$4.91	0.0	\$0.00
Balsam fir	0.0	\$0.00	0.0	\$0.00	1,097.7	\$13.98	0.0	\$0.00	0.0	\$0.00
White Spruce	0.0	\$0.00	55.0	\$22.97	1,813.3	\$19.08	0.0	\$0.00	0.0	\$0.00
Black Spruce	0.0	\$0.00	0.0	\$0.00	0.0	\$0.00	0.0	\$0.00	0.0	\$0.00
Tamarack	0.0	\$0.00	0.0	\$0.00	97.4	\$3.42	47.3	\$4.00	0.0	\$0.00
White Cedar	0.0	\$0.00	37.2	\$20.97	546.0	\$7.84	0.0	\$0.00	0.0	\$0.00
Jack Pine	0.0	\$0.00	7.4	\$31.55	112.3	\$19.72	11.1	\$10.50	0.0	\$0.00
Red Pine	227.5	\$103.90	3,668.3	\$26.62	387.0	\$15.64	0.0	\$0.00	0.0	\$0.00
White Pine	30.8	\$96.79	126.8	\$26.76	0.0	\$0.00	0.0	\$0.00	0.0	\$0.00
Maple Species	0.0	\$0.00	0.0	\$0.00	14.6	\$9.47	0.0	\$0.00	0.0	\$0.00
Mixed Species	0.0	\$0.00	0.0	\$0.00	15.0	\$4.99	0.0	\$0.00	0.0	\$0.00
USDI – BIA: All Species	258.3	\$103.05	4,072.2	\$25.96	27,503.1	\$21.17	128.2	\$5.33	0.0	\$0.00

Agency Name: Chippewa N.F.**Reporting Period: 10/19 to 09/20****Reporting Basis: Appraisal Reports**

<u>Species Name</u>	Sawtimber		Pulp and Bolts		Pulpwood		Fuelwood		Biomass	
	<u>MBF</u>	<u>Avg Price</u>	<u>Cords</u>	<u>Avg Price</u>	<u>Cords</u>	<u>Avg Price</u>	<u>Cords</u>	<u>Avg Price</u>	<u>Tons</u>	<u>Avg Price</u>
Aspen	0.0	\$0.00	0.0	\$0.00	44,516.0	\$32.90	0.0	\$0.00	0.0	\$0.00
Balm of Gilead	0.0	\$0.00	0.0	\$0.00	0.0	\$0.00	0.0	\$0.00	0.0	\$0.00
Birch Species	0.0	\$0.00	0.0	\$0.00	0.0	\$0.00	0.0	\$0.00	0.0	\$0.00
Ash Species	0.0	\$0.00	0.0	\$0.00	0.0	\$0.00	0.0	\$0.00	0.0	\$0.00
Elm Species	0.0	\$0.00	0.0	\$0.00	0.0	\$0.00	0.0	\$0.00	0.0	\$0.00
Oak Species	0.0	\$0.00	0.0	\$0.00	0.0	\$0.00	0.0	\$0.00	0.0	\$0.00
Basswood	0.0	\$0.00	0.0	\$0.00	0.0	\$0.00	0.0	\$0.00	0.0	\$0.00
Mixed/Other Hdws	0.0	\$0.00	3,202.0	\$15.71	10,336.0	\$11.30	0.0	\$0.00	0.0	\$0.00
Balsam fir	0.0	\$0.00	5,182.0	\$20.93	0.0	\$0.00	0.0	\$0.00	0.0	\$0.00
White Spruce	0.0	\$0.00	2,044.0	\$26.08	0.0	\$0.00	0.0	\$0.00	0.0	\$0.00
Black Spruce	0.0	\$0.00	0.0	\$0.00	0.0	\$0.00	0.0	\$0.00	0.0	\$0.00
Tamarack	0.0	\$0.00	0.0	\$0.00	8.0	\$7.63	0.0	\$0.00	0.0	\$0.00
White Cedar	0.0	\$0.00	0.0	\$0.00	0.0	\$0.00	0.0	\$0.00	0.0	\$0.00
Jack Pine	47.0	\$101.19	0.0	\$0.00	0.0	\$0.00	0.0	\$0.00	0.0	\$0.00
Red Pine	5,178.0	\$121.46	0.0	\$0.00	3,813.0	\$17.93	0.0	\$0.00	0.0	\$0.00
White Pine	229.0	\$119.70	0.0	\$0.00	0.0	\$0.00	0.0	\$0.00	0.0	\$0.00
Maple Species	0.0	\$0.00	0.0	\$0.00	0.0	\$0.00	0.0	\$0.00	0.0	\$0.00
Mixed Species	0.0	\$0.00	0.0	\$0.00	0.0	\$0.00	470.0	\$4.04	0.0	\$0.00
Chippewa N.F.: All Species	5,454.0	\$121.22	10,428.0	\$20.33	58,673.0	\$28.12	470.0	\$4.04	0.0	\$0.00

Agency Name: Superior N.F.

Reporting Period: 10/19 to 09/20

Reporting Basis: Appraisal Reports

Species Name	Sawtimber		Pulp and Bolts		Pulpwood		Fuelwood		Biomass	
	MBF	Avg Price	Cords	Avg Price	Cords	Avg Price	Cords	Avg Price	Tons	Avg Price
Aspen	0.0	\$0.00	0.0	\$0.00	44,480.5	\$19.26	0.0	\$0.00	0.0	\$0.00
Balm of Gilead	0.0	\$0.00	0.0	\$0.00	0.0	\$0.00	0.0	\$0.00	0.0	\$0.00
Birch Species	0.0	\$0.00	0.0	\$0.00	5,916.9	\$2.86	0.0	\$0.00	0.0	\$0.00
Ash Species	0.0	\$0.00	0.0	\$0.00	0.0	\$0.00	0.0	\$0.00	0.0	\$0.00
Elm Species	0.0	\$0.00	0.0	\$0.00	0.0	\$0.00	0.0	\$0.00	0.0	\$0.00
Oak Species	0.0	\$0.00	0.0	\$0.00	0.0	\$0.00	0.0	\$0.00	0.0	\$0.00
Basswood	0.0	\$0.00	0.0	\$0.00	0.0	\$0.00	0.0	\$0.00	0.0	\$0.00
Mixed/Other Hdws	0.0	\$0.00	0.0	\$0.00	70.0	\$10.29	15,249.4	\$1.04	0.0	\$0.00
Balsam fir	0.0	\$0.00	0.0	\$0.00	7,095.5	\$2.99	0.0	\$0.00	0.0	\$0.00
White Spruce	0.0	\$0.00	7,214.0	\$29.97	14,826.6	\$12.90	0.0	\$0.00	0.0	\$0.00
Black Spruce	0.0	\$0.00	0.0	\$0.00	0.0	\$0.00	0.0	\$0.00	0.0	\$0.00
Tamarack	0.0	\$0.00	0.0	\$0.00	0.0	\$0.00	0.0	\$0.00	0.0	\$0.00
White Cedar	0.0	\$0.00	0.0	\$0.00	0.0	\$0.00	0.0	\$0.00	0.0	\$0.00
Jack Pine	0.0	\$0.00	6,038.0	\$11.75	0.0	\$0.00	439.7	\$1.07	0.0	\$0.00
Red Pine	0.0	\$0.00	13,154.0	\$36.75	14,138.7	\$5.68	0.0	\$0.00	0.0	\$0.00
White Pine	39.0	\$84.85	0.0	\$0.00	0.0	\$0.00	0.0	\$0.00	0.0	\$0.00
Maple Species	0.0	\$0.00	0.0	\$0.00	0.0	\$0.00	0.0	\$0.00	0.0	\$0.00
Mixed Species	0.0	\$0.00	131.7	\$20.01	0.0	\$0.00	0.0	\$0.00	0.0	\$0.00
Superior N.F.: All Species	39.0	\$84.85	26,537.7	\$29.14	86,528.2	\$13.49	15,689.1	\$1.04	0.0	\$0.00

MnDNR FORESTRY [STATE] 2019**Agency Name: MnDNR Forestry****Reporting Period: 01/20 to 12/20****Reporting Basis: Appraisal Reports**

<u>Species Name</u>	Sawtimber		Pulp and Bolts		Pulpwood		Fuelwood		Biomass	
	<u>MBF</u>	<u>Avg Price</u>	<u>Cords</u>	<u>Avg Price</u>	<u>Cords</u>	<u>Avg Price</u>	<u>Cords</u>	<u>Avg Price</u>	<u>Tons</u>	<u>Avg Price</u>
Aspen	0.0	\$0.00	0.0	\$0.00	327,176.2	\$28.29	100.0	\$5.00	0.0	\$0.00
Balm of Gilead	0.0	\$0.00	4,651.4	\$31.05	21,820.7	\$23.18	0.0	\$0.00	0.0	\$0.00
Birch Species	1.6	\$80.14	17,420.5	\$19.11	14,827.6	\$10.58	22.6	\$2.76	0.0	\$0.00
Ash Species	4.8	\$69.95	22,064.2	\$11.14	13,060.6	\$6.74	101.3	\$6.00	0.0	\$0.00
Elm Species	7.6	\$72.91	0.2	\$13.50	118.5	\$9.17	0.0	\$0.00	0.0	\$0.00
Oak Species	557.7	\$213.39	21,012.5	\$29.23	1,456.7	\$11.51	532.8	\$2.17	0.0	\$0.00
Basswood	24.7	\$68.21	15,114.9	\$12.00	1,566.6	\$5.75	0.0	\$0.00	0.0	\$0.00
Mixed/Other Hdwds	29.0	\$71.82	6.9	\$11.47	106.7	\$6.81	23.6	\$3.56	0.0	\$0.00
Balsam fir	0.0	\$0.00	9,677.1	\$17.19	18,390.6	\$12.58	0.0	\$0.00	0.0	\$0.00
White Spruce	856.6	\$79.62	19,925.5	\$24.98	4,508.9	\$11.99	111.1	\$2.00	0.0	\$0.00
Black Spruce	28.9	\$78.32	0.0	\$0.00	54,929.3	\$20.94	0.0	\$0.00	0.0	\$0.00
Tamarack	0.0	\$0.00	9,649.0	\$10.44	14,743.8	\$5.93	3,040.1	\$3.31	0.0	\$0.00
White Cedar	0.0	\$0.00	154.0	\$21.31	652.6	\$5.83	0.0	\$0.00	0.0	\$0.00
Jack Pine	11.0	\$125.78	18,964.3	\$27.42	675.0	\$6.24	570.3	\$2.45	0.0	\$0.00
Red Pine	9,984.2	\$132.54	50,121.8	\$36.80	1,426.0	\$4.13	100.0	\$2.50	0.0	\$0.00
White Pine	70.0	\$96.11	4,351.0	\$30.90	752.2	\$5.08	0.0	\$0.00	0.0	\$0.00
Maple Species	9.8	\$105.66	12,325.7	\$15.33	19,277.1	\$12.28	3.0	\$2.00	0.0	\$0.00
Mixed Species	0.0	\$0.00	0.0	\$0.00	0.0	\$0.00	0.0	\$0.00	16,910.4	\$0.79
MnDNR: All Species	11,585.9	\$131.77	205,439.0	\$24.22	495,489.1	\$23.84	4,604.8	\$3.12	16,910.4	\$0.79