

2016 Minnesota Public Stumpage Price Review and Price Indices

June 6, 2017

Download at: <http://www.dnr.state.mn.us/forestry/timbersales/stumpage.html>

Highlights

- In 2016, all species and products stumpage sold by public agencies totaled 1.777 million cord equivalents with a bid value of \$51.319 million as compared to the 2015 total 1.879 million cords sold with a bid value of \$54.634 million, a year-over-year volume decrease of 102,039 cord equivalents or 5.4 percent with a year-over-year value decrease of \$3.314 million or 6.1 percent.
- In 2016, the average public stumpage price received for all-species cord products decreased to \$28.43 per cord from \$28.80 per cord in 2015, a price decrease of \$0.38 per cord or 1.3 percent. In 2016, the average public agency aspen stumpage price received was \$35.23 per cord compared to \$36.64 per cord in 2015, a price decrease of \$1.41 per cord or 3.9 percent (Figure 1).

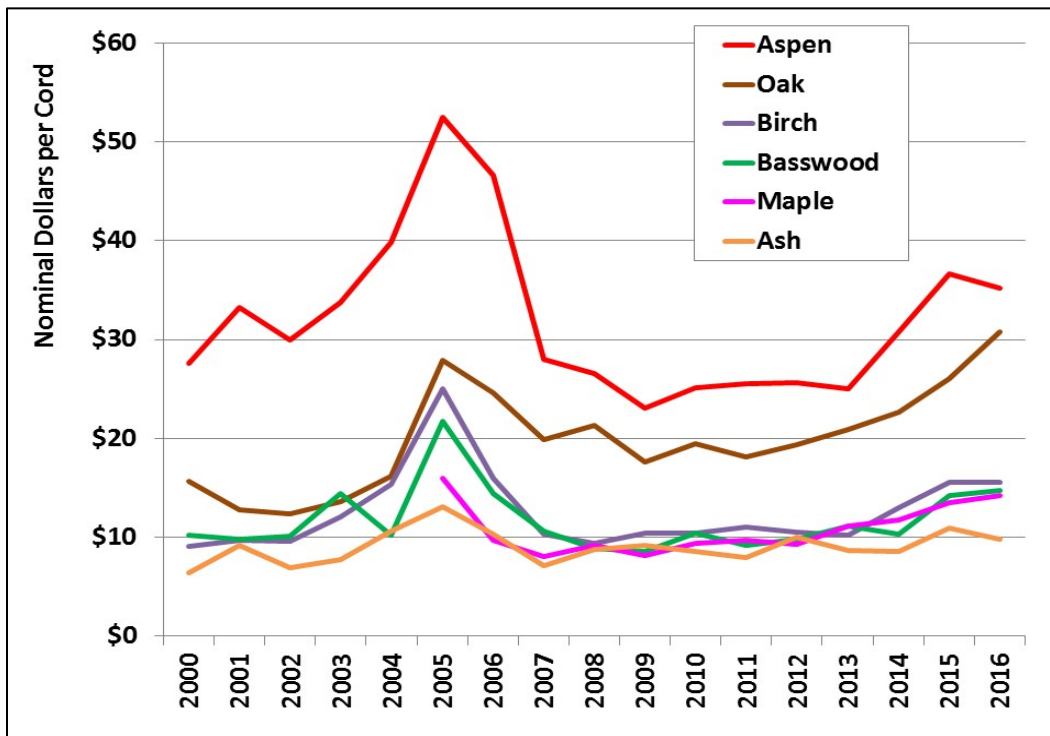


Figure 1: Hardwood cord product prices, 2000-2016.

- In 2016, the average public agency red pine cord products stumpage price was \$34.31 per cord compared to \$38.75 per cord in 2015, a year-over-year price decrease of \$4.44 per cord or 11.5 percent. In 2016, the average public agency black spruce cord products stumpage price was \$27.02 per cord compared to \$23.79 per cord in 2015, a year-over-year price increase of \$3.23 per cord or 13.6% (Figure 2).

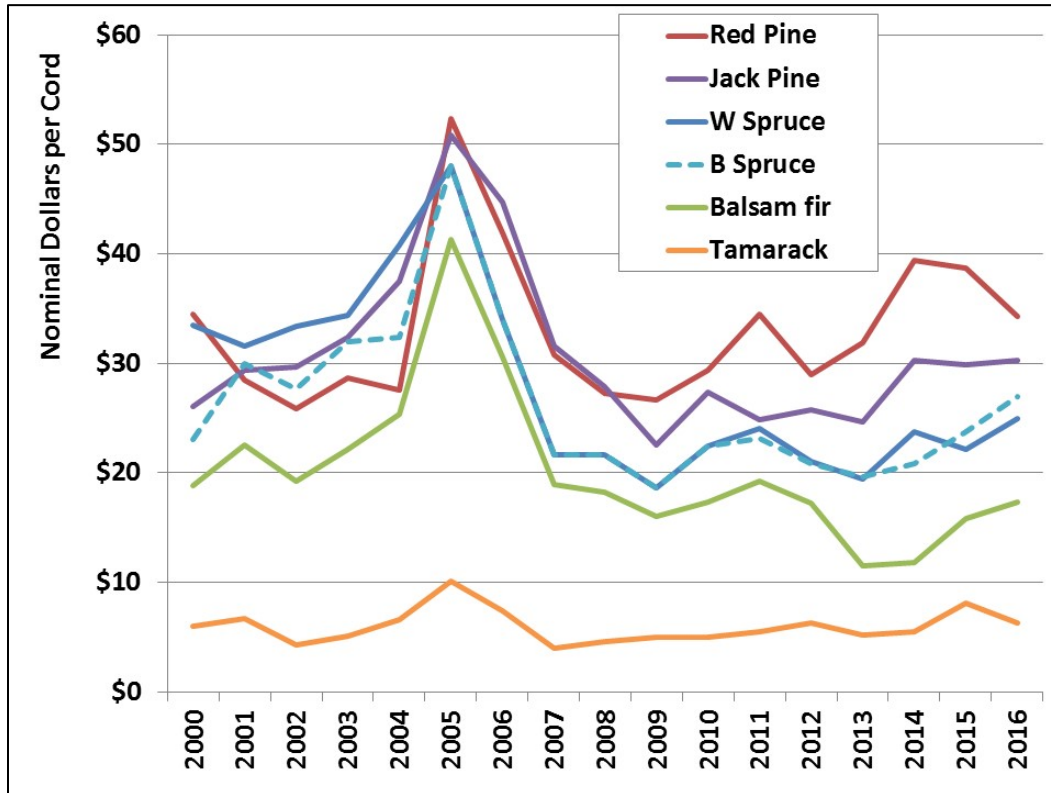


Figure 2: Softwood cord product prices, 2000-2016.

- In 2016, a total 26.292 MMbf of sawtimber was sold by Minnesota’s public agencies as compared to 18.673 MMbf sold in 2015, a year-over-year volume increase of 7.619 MMbf or 40.8 percent. In 2016, the all-species average public agency sawtimber stumpage price was \$131.77 per Mbf compared to \$160.13 per Mbf in 2015, a year-over-year price decrease of \$28.36 per Mbf or 17.7 percent. In 2016, the average price of red pine sawtimber stumpage sold was \$133.22 compared to \$177.18 in 2015, a price decrease of \$43.96 per Mbf or 24.8% (Figure 3).

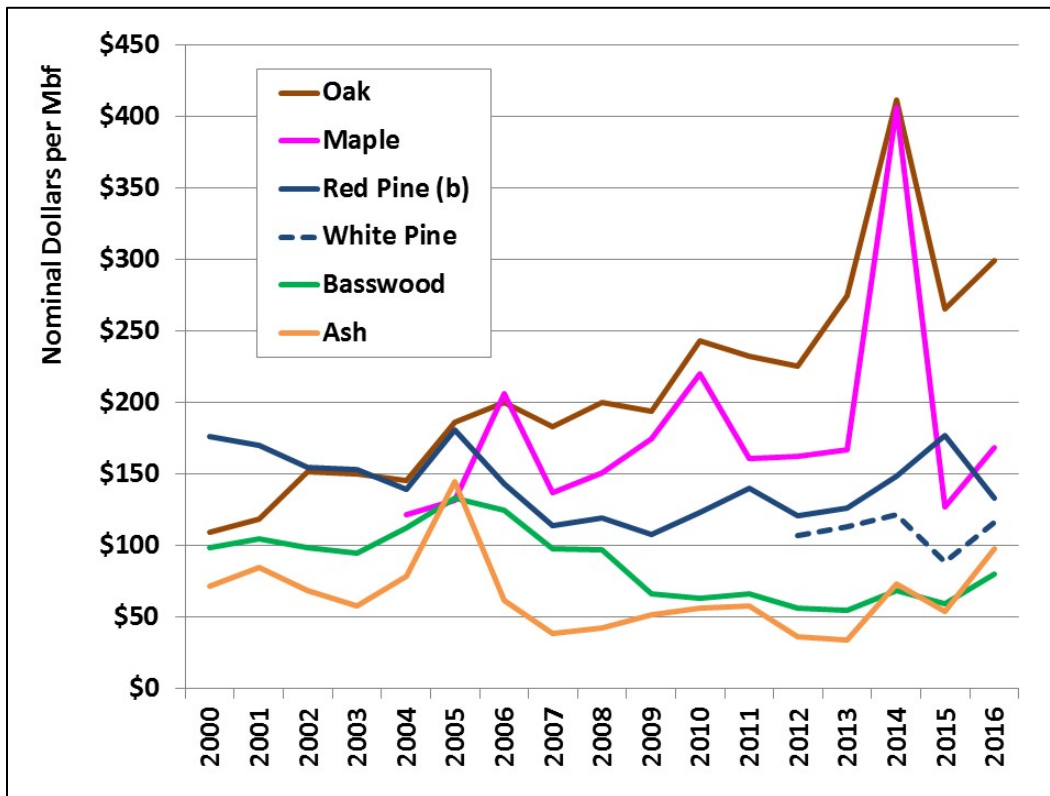


Figure 3: Sawtimber stumpage prices, 2000-2016.
 a) Scribner Decimal C log rule.
 b) Prices are combined red and white pine, 2000-2011.

Inflation Adjusted Stumpage Price Indices

The Implicit Price Deflator for Gross Domestic Product (GDP) is baseline inflation (all indices base year 2000=100). In 2016, the Inflation Index increased 1.5 percent year-over-year. In 2016, the all-agencies Aspen Cord Price Index decreased 3.8 percent year-over-year to 127.6 from 132.7 in 2015. In 2016, the Black Spruce Price Index increased 13.6 percent year-over-year to 117.3 from 103.3 in 2015. In 2016, the Red Pine Mbf Price Index decreased 24.8 percent year-over-year to 75.7 from 100.7 in 2015. In 2016, the Mbf Composite Price Index decreased 17.7 percent year-over-year to 123.1 from 149.7 in 2015 (Figure 4, Table 1).

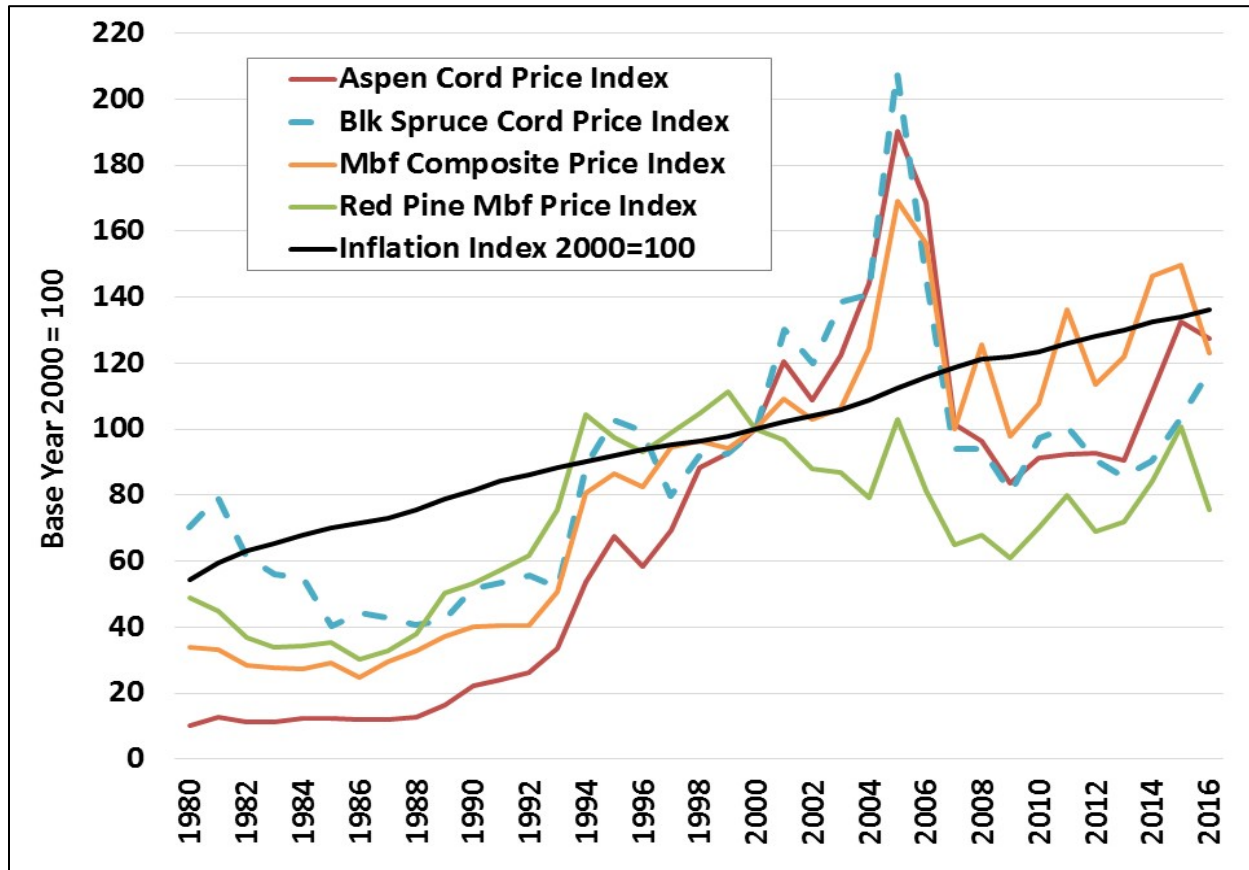


Figure 4: Inflation and public agency stumpage price indices, 1980-2016.

Table 1: Public stumpage price indices and inflation, base year 2000 = 100.

Price Index	2012	2013	2014	2015	2016	Y/Y Δ	Y/Y Δ%
Aspen Cord Price Index	92.7	90.5	111.5	132.7	127.6	-5.1	-3.8%
Black Spruce Cord Price Index	90.6	85.4	90.5	103.3	117.3	14.0	13.6%
Red Pine Mbf Price Index	68.8	71.9	84.3	100.7	75.7	-25.0	-24.8%
Mbf Composite Price Index	113.6	121.9	146.3	149.7	123.1	-26.5	-17.7%
Inflation Index	128.2	130.2	132.7	134.0	136.1	2.0	1.5%

Historical Prices

Table 2: Statewide average prices received for stumpage sold by public land agencies in Minnesota, 10-year history.

Cord Products (a) (Nominal \$/Cord)	2007	2008	2009	2010	2011	2012	2013	2014	2015	2016	16/15 Δ\$/y	16/15 Δ% y/y
Ash	\$7.12	\$8.76	\$9.16	\$8.60	\$7.92	\$10.02	\$8.66	\$8.51	\$10.88	\$9.81	(\$1.07)	-9.8%
Aspen	\$28.00	\$26.57	\$23.11	\$25.16	\$25.55	\$25.59	\$24.99	\$30.80	\$36.64	\$35.23	(\$1.41)	-3.8%
Balm	\$21.75	\$21.18	\$20.83	\$21.22	\$20.01	\$22.77	\$20.56	\$24.80	\$27.68	\$27.46	(\$0.22)	-0.8%
Birch	\$10.33	\$9.40	\$10.37	\$10.37	\$11.06	\$10.54	\$10.18	\$13.00	\$15.60	\$15.53	(\$0.07)	-0.4%
Oak	\$19.88	\$21.27	\$17.61	\$19.51	\$18.14	\$19.38	\$20.89	\$22.68	\$26.06	\$30.76	\$4.70	18.0%
Basswood	\$10.62	\$8.83	\$8.58	\$10.45	\$9.15	\$9.79	\$11.13	\$10.30	\$14.19	\$14.78	\$0.59	4.2%
Maple	\$8.05	\$9.15	\$8.14	\$9.36	\$9.71	\$9.27	\$11.10	\$11.72	\$13.50	\$14.26	\$0.76	5.6%
Mixed/Other Hdwds	\$12.16	\$10.97	\$11.78	\$12.29	\$11.84	\$12.23	\$10.71	\$13.90	\$14.08	\$16.58	\$2.50	17.8%
Balsam fir	\$18.93	\$18.26	\$16.04	\$17.38	\$19.25	\$17.25	\$11.54	\$11.83	\$15.84	\$17.33	\$1.49	9.4%
W Spruce	\$21.64	\$21.62	\$18.64	\$22.43	\$24.08	\$21.01	\$19.41	\$23.78	\$22.12	\$24.99	\$2.87	13.0%
B Spruce	\$21.64	\$21.62	\$18.64	\$22.43	\$23.14	\$20.87	\$19.68	\$20.84	\$23.79	\$27.02	\$3.23	13.6%
Tamarack	\$3.97	\$4.62	\$5.01	\$5.03	\$5.51	\$6.30	\$5.17	\$5.54	\$8.09	\$6.26	(\$1.83)	-22.6%
Cedar	\$8.47	\$5.30	\$5.69	\$6.19	\$8.21	\$5.12	\$7.86	\$6.34	\$6.41	\$6.85	\$0.44	6.9%
Jack Pine	\$31.54	\$27.85	\$22.59	\$27.42	\$24.85	\$25.75	\$24.67	\$30.31	\$29.85	\$30.24	\$0.39	1.3%
Red Pine (b)	\$30.79	\$27.23	\$26.71	\$29.42	\$34.45	\$29.02	\$31.93	\$39.42	\$38.75	\$34.31	(\$4.44)	-11.5%
White Pine					\$31.42	\$21.74	\$30.06	\$23.23	\$38.66	\$27.02	(\$11.64)	-30.1%
Pulp Composite	\$22.03	\$20.13	\$18.29	\$20.39	\$20.90	\$21.05	\$20.12	\$24.16	\$28.47	\$27.50	(\$0.97)	-3.4%
Pulp & Bolts Composite	\$24.32	\$27.21	\$23.68	\$25.87	\$25.64	\$24.14	\$26.82	\$26.47	\$29.56	\$30.59	\$1.03	3.5%

a) Combined pulpwood and pulp & bolts cord products only.

b) Includes White pine through 2010.

Table 3: Statewide average prices received for stumpage sold by public agencies in Minnesota, 10-year history.

Sawtimber Products (a) (Nominal \$/Mbf)	2007	2008	2009	2010	2011	2012	2013	2014	2015	2016	16/15 Δ\$ y/y	16/15 Δ% y/y
Ash	\$38.21	\$42.41	\$51.89	\$56.27	\$58.09	\$36.12	\$34.06	\$73.41	\$54.17	\$97.67	\$43.50	80.3%
Aspen												
Birch	\$27.24	\$32.04	\$19.82	\$38.92	\$42.15	\$35.70	\$36.97	\$47.04	\$42.84	\$45.24	\$2.40	5.6%
Elm	\$85.22	\$60.08	\$53.99	\$45.08	\$60.43	\$42.45	\$41.41	\$42.19	\$42.50	\$42.54	\$0.04	0.1%
Oak	\$182.83	\$200.00	\$193.61	\$243.09	\$232.20	\$225.36	\$274.54	\$411.34	\$265.54	\$299.03	\$33.49	12.6%
Basswood	\$97.73	\$97.33	\$66.24	\$63.47	\$66.11	\$55.87	\$54.44	\$68.87	\$59.24	\$80.40	\$21.16	35.7%
Maple	\$137.00	\$150.62	\$175.00	\$219.83	\$160.78	\$162.50	\$166.65	\$406.70	\$126.70	\$168.50	\$41.80	33.0%
Mixed/Other Hdwds	\$52.91	\$52.86	\$37.72	\$29.80	\$48.31	\$36.88	\$28.56	\$65.40	\$47.87	\$47.04	(\$0.83)	-1.7%
Balsam fir	\$76.47	\$72.75	\$58.34				\$66.51					
W Spruce	\$96.41	\$81.57	\$87.05	\$102.15	\$64.23	\$83.12	\$87.57	\$61.12	\$74.68	\$73.59	(\$1.09)	-1.5%
Cedar	\$16.20											
Jack Pine	\$115.21	\$109.95	\$106.19	\$105.00	\$145.76	\$138.95	\$112.00	\$89.56	\$105.00	\$118.77	\$13.77	13.1%
Red Pine (b)	\$114.04	\$119.51	\$107.40	\$123.36	\$140.46	\$121.15	\$126.48	\$148.33	\$177.18	\$133.22	(\$43.96)	-24.8%
White Pine						\$106.66	\$112.79	\$121.29	\$88.92	\$116.02	\$27.10	30.5%
MBF Composite	\$106.92	\$134.24	\$104.49	\$115.16	\$145.88	\$121.59	\$130.39	\$156.53	\$160.13	\$131.77	(\$28.36)	-17.7%

a) Scribner Decimal C.

b) Includes White Pine through 2011.

Historical Sales Values

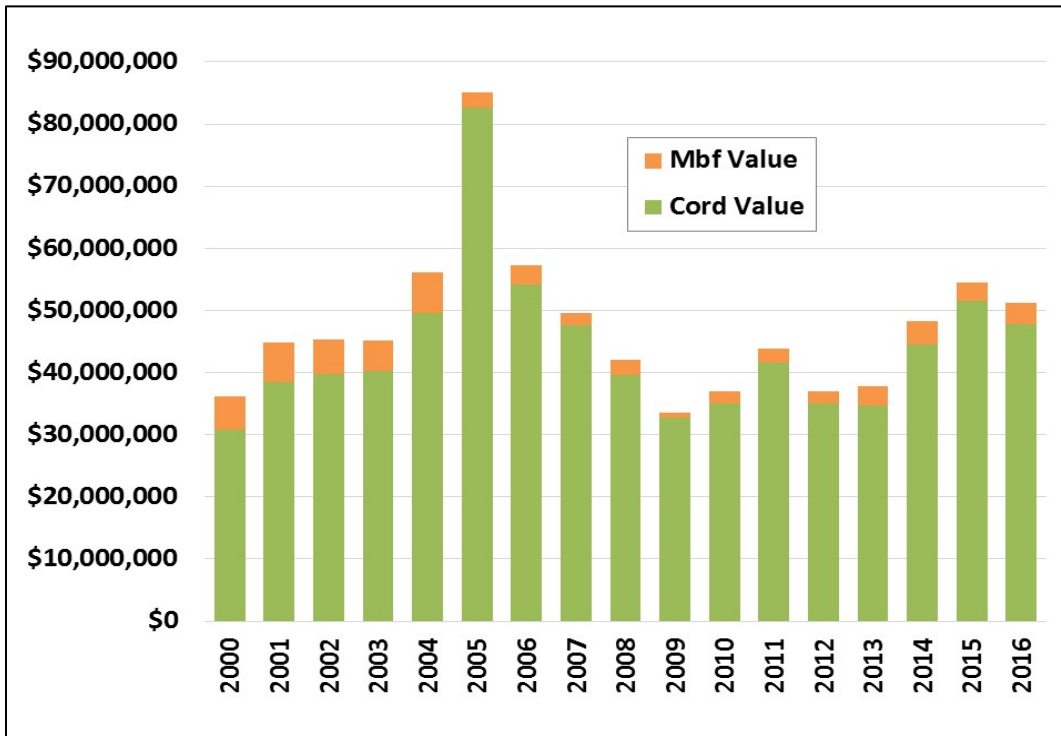


Figure 5: Minnesota public agencies total bid values of stumpage sold.

Table 4: All Minnesota public agencies bid values of stumpage sold, 2000-2016.

Year	Cord Value	Mbf Value	Total Value	Δ\$ y/y	Δ% y/y
2000	\$30,713,890	\$5,448,682	\$36,162,573	-	-
2001	\$38,534,245	\$6,376,200	\$44,910,445	\$8,747,872	24.2%
2002	\$39,789,080	\$5,542,413	\$45,331,494	\$421,049	0.9%
2003	\$40,227,105	\$4,936,971	\$45,164,076	(\$167,418)	-0.4%
2004	\$49,500,995	\$6,690,588	\$56,191,584	\$11,027,508	24.4%
2005	\$82,631,761	\$2,387,282	\$85,019,043	\$28,827,459	51.3%
2006	\$54,106,947	\$3,114,194	\$57,221,141	(\$27,797,902)	-32.7%
2007	\$47,688,386	\$1,949,798	\$49,638,184	(\$7,582,957)	-13.3%
2008	\$39,556,646	\$2,581,705	\$42,138,351	(\$7,499,832)	-15.1%
2009	\$32,672,750	\$868,862	\$33,541,612	(\$8,596,740)	-20.4%
2010	\$34,986,480	\$2,017,522	\$37,004,002	\$3,462,391	10.3%
2011	\$41,490,200	\$2,394,396	\$43,884,596	\$6,880,593	18.6%
2012	\$35,047,126	\$1,952,204	\$36,999,330	(\$6,885,266)	-15.7%
2013	\$34,731,261	\$3,002,852	\$37,734,113	\$734,783	2.0%
2014	\$44,457,180	\$3,887,081	\$48,344,261	\$10,610,148	28.1%
2015	\$51,491,456	\$2,990,015	\$54,481,472	\$6,137,211	12.7%
2016	\$47,761,030	\$3,464,521	\$51,225,551	(\$3,255,921)	-6.0%

Historical Sales Volumes

In 2016, Minnesota public agencies sold 1,732,707 cord equivalents of sawtimber, pulp & bolts, and pulpwood compared to sales of 1,825,081 cord equivalents in 2015, a sales volume decline of 92,374 cord equivalents or 5.1 percent year-over-year. In 2016, aspen/balm of Gilead sold volume decreased to 845,524 cords from 855,460 cords in 2015, a 9,936-cord or 1.2 percent decrease year-over-year. In 2016, pine volume sold decreased to 234,485 cord equivalents from 247,082 cord equivalents in 2015, a 12,597-cord or 5.1 percent decrease. In 2016 spruce volume sold decreased to 159,245 cords from 174,975 cords in 2015, a 15,729-cord or 9 percent decrease (Figure 6, Table 5).

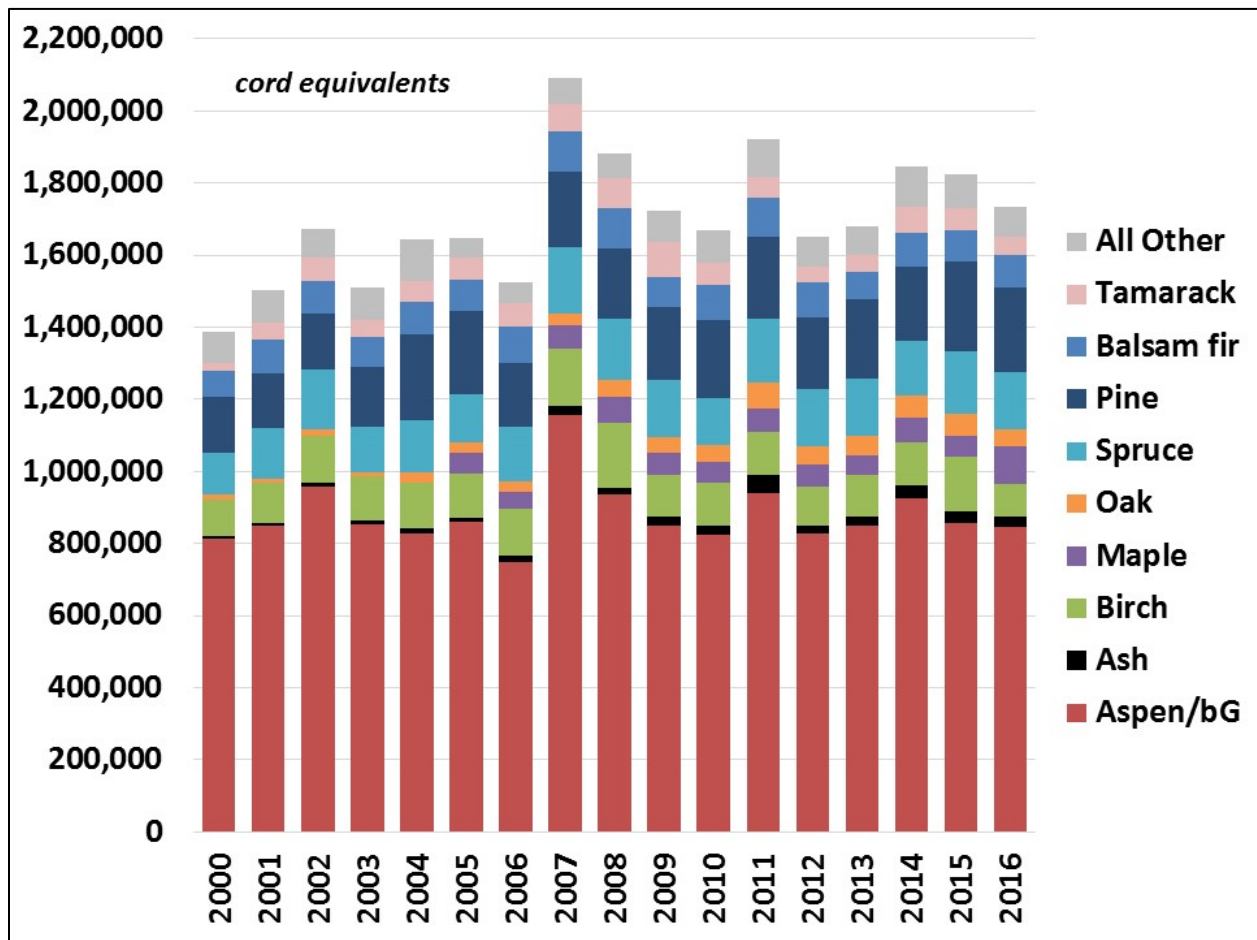


Figure 6: All public agencies volume sold by species group, 2000-2016. Products include: sawtimber converted at 2 cords per Mbf, pulp & bolts cord products, and pulpwood cord products.

Table 5: All Minnesota public agencies volume sold in cord equivalents by species group, 2000-2016.

Year	Aspen/bG	Ash	Birch	Maple	Oak	Spruce	Pine	Balsam fir	Tamarack	All Other	Total
2000	814,784	5,508	103,031		13,776	114,403	153,842	74,730	20,776	86,647	1,387,498
2001	848,575	7,025	111,558		13,885	138,038	153,692	92,788	46,582	92,513	1,504,656
2002	958,984	8,696	132,484		18,298	164,598	154,277	91,831	65,224	78,825	1,673,216
2003	853,447	10,202	121,405		14,169	125,711	163,366	83,723	49,246	88,535	1,509,803
2004	829,113	11,622	127,859		29,508	145,013	238,930	89,271	55,552	115,821	1,642,688
2005	859,569	13,236	121,440	57,180	28,597	135,031	228,974	87,083	62,233	54,875	1,648,219
2006	747,408	18,722	129,006	46,572	29,979	150,877	178,471	102,102	63,926	58,193	1,525,254
2007	1,155,112	26,946	159,154	65,437	30,833	184,221	208,896	111,690	77,649	71,020	2,090,958
2008	937,598	16,730	181,954	69,493	48,439	169,773	193,034	112,445	83,207	70,900	1,883,574
2009	848,016	26,943	115,236	62,320	43,887	156,408	202,221	85,918	97,270	86,399	1,724,617
2010	824,135	24,988	119,494	59,575	44,530	130,870	216,865	98,517	60,380	89,861	1,669,214
2011	940,669	50,223	119,533	63,752	74,256	176,260	227,487	106,658	58,118	104,144	1,921,100
2012	826,340	24,979	107,629	60,741	48,525	160,322	199,581	97,256	43,303	81,381	1,650,055
2013	849,626	25,730	114,661	55,874	51,912	160,644	220,209	75,940	45,471	81,498	1,681,563
2014	927,010	32,801	122,493	67,117	62,050	152,298	202,962	95,889	71,717	110,434	1,844,771
2015	855,460	32,223	153,171	59,020	59,129	174,975	247,082	88,934	59,133	95,955	1,825,081
2016	845,524	30,523	89,247	105,016	47,710	159,245	234,485	89,715	47,926	83,316	1,732,707
16/15 Δ	(9,936)	(1,700)	(63,924)	45,996	(11,420)	(15,729)	(12,597)	780	(11,207)	(12,638)	(92,374)
16/15 Δ%	-1.2%	-5.3%	-41.7%	77.9%	-19.3%	-9.0%	-5.1%	0.9%	-19.0%	-13.2%	-5.1%

a) Volumes include sawtimber converted to cords at 2 cords per Mbf, pulp & bolts cord products, and pulpwood cord products.

Data and Methods

This report presents average stumpage prices received by all Minnesota public agencies for the following product classifications: sawtimber, pulp & bolts, pulpwood, fuelwood, and biomass. All data was voluntarily self-reported by individual agency representatives facilitated by a DNR-led survey. Price and volume data and analyses presented in this report may be useful for determining the total volume and value of stumpage sold and for comparing relative volumes and values of stumpage sold over time.

DATA VARIABILITY AND DISCLAIMER—Public agencies follow different fiscal years and there is some variability in sawtimber specifications. The reporting period for each agency is included as part of the agencies information. The fiscal year used by the counties is the same as the calendar year. The state’s (Minnesota DNR Forestry) fiscal year runs from July 1 to June 30, but, to make the data reported more consistent with the other agencies, the time period for state data included in the report is for **CY2016**. Federal agencies (USFS and BIA) fiscal year runs from October 1 – September 30. Federal agencies softwood sawtimber specifications include bolts to a six-inch top dib and hardwood bolts to an eight-inch top dib. Virtually all other agencies report pulp and bolts as a standalone product category for species that are frequently purchased by sawmills. Self-reported product category volumes and values were adjusted to account for variability in product specifications at the discretion of the state forest economist. In addition, some agencies report their data based on timber appraisal estimates from timber sales sold, while others report based on actual scale receipts from timber harvested and scaled. The reporting basis for each agency is noted in the report.

The reader should use caution when comparing the prices shown in this report with actual prices received or expected on a specific timber sale. Individual sale prices may vary significantly (± 30 percent or more) from the averages shown in this report due to variability in local markets, road access costs, haul distance, sale/site specific conditions, and operational constraints.

Definitions

Average price—volume weighted mean, equals total value divided by total volume for each listed species group and product classification.

Biomass—dead trees and logging residues including tops, limbs, and cull reported in green tons.

Board foot—a piece of wood 1” thick by 12” long by 12” wide.

Bolt—short length log, in the Lake States usually 100” in length with minimum 6” top dib. Depending on species and quality, may be suitable for the production of dimensional lumber (2x4s), industrial grade lumber (pallets), for manufacturing turned forest products, or for peeling.

Inflation Index—base year 2000=100, indexed to general price changes as measured by the Implicit Price Deflator for Gross Domestic Product (GDP) compiled by the U.S. Department of Commerce, Bureau of Economic Analysis.

Cord (Standard)—cubic volume measure 4-feet wide by 4-feet high by 8-feet in length, or equivalent containing 128 cubic feet of well stacked roundwood, including bark and air space, with an average of 79 cubic feet of solid wood. By state statute, fuelwood is measured in standard cords.

Cord (100-inch)—cubic volume measure 4-feet wide by 4-feet high by 8.3-feet (100-inch) in length, or equivalent containing 133.3 cubic feet of well stacked roundwood, including bark and air space, with an average of 82.3 cubic feet solid wood. In Minnesota, the vast majority of cord products are cut to 100-inch.

Mbf—one thousand board feet; stumpage volume measured using Scribner Decimal C log or tree scale.

Mbf Composite Price Index—base year 2000=100, volume weighted (total all-species MBF value divided by total all-species MBF volume) sawtimber price index.

MMbf—one million board feet; stumpage volume measured using Scribner log or tree scale.

Pulpwood—stem suitable for fiber used for paper and oriented strand board (OSB) manufacturing.

Pulp & Bolts—stem containing the mixed products of pulpwood and bolts.

Sawtimber—stem suitable for production of graded boards and/or dimension lumber.

Stumpage—value paid to a landowner to harvest standing timber.

Contact

Don Deckard, Ph.D., State Forest Economist
MNDNR Division of Forestry
500 Lafayette Road
Saint Paul, Minnesota 55155-4044
Mailto: donald.deckard@state.mn.us
Office: (651) 259-5287

2016 SUMMARY

ALL MINNESOTA PUBLIC AGENCIES

All Agencies	Sawtimber		Pulp and Bolts		Pulpwood		Fuelwood		Biomass	
	Species Name	MBF	Avg Price	Cords	Avg Price	Cords	Avg Price	Cords	Avg Price	Tons
Aspen	0.0	\$0.00	65,888.0	\$46.49	769,367.5	\$34.26	0.0	\$0.00	0.0	\$0.00
Balm of Gilead	0.0	\$0.00	765.0	\$66.80	9,503.6	\$24.29	0.0	\$0.00	0.0	\$0.00
Birch Species	238.5	\$45.24	35,936.0	\$18.11	52,833.9	\$13.77	77.4	\$3.71	0.0	\$0.00
Ash Species	226.0	\$97.67	11,699.5	\$12.55	18,371.7	\$8.07	107.0	\$4.26	0.0	\$0.00
Elm Species	5.9	\$42.54	0.0	\$0.00	116.0	\$3.63	0.0	\$0.00	0.0	\$0.00
Oak Species	1,548.9	\$299.03	41,732.4	\$31.71	2,879.7	\$17.00	70.5	\$2.82	0.0	\$0.00
Basswood	251.2	\$80.40	20,035.0	\$16.62	5,653.5	\$8.26	0.0	\$0.00	0.0	\$0.00
Mixed/Other Hdwds	2,491.4	\$47.04	38,215.0	\$17.15	2,534.9	\$8.06	945.0	\$3.83	0.0	\$0.00
Balsam fir	0.0	\$0.00	23,061.3	\$24.73	66,653.3	\$14.76	65.0	\$4.46	0.0	\$0.00
White Spruce	517.3	\$73.59	53,306.6	\$27.63	18,155.2	\$17.25	427.0	\$5.10	0.0	\$0.00
Black Spruce	0.0	\$0.00	11,314.3	\$41.36	75,434.7	\$24.87	0.0	\$0.00	0.0	\$0.00
Tamarack	0.0	\$0.00	0.0	\$0.00	47,926.2	\$6.26	3,546.3	\$2.31	0.0	\$0.00
White Cedar	0.0	\$0.00	45.0	\$12.07	4,496.0	\$6.80	0.0	\$0.00	0.0	\$0.00
Jack Pine	25.3	\$118.77	35,548.0	\$34.03	8,403.3	\$14.20	451.8	\$2.70	0.0	\$0.00
Red Pine	20,060.7	\$133.22	122,036.9	\$37.71	18,460.6	\$11.84	5.0	\$2.40	0.0	\$0.00
White Pine	742.2	\$116.02	7,277.0	\$28.70	1,102.4	\$15.91	0.0	\$0.00	0.0	\$0.00
Maple Species	184.9	\$168.50	37,072.0	\$17.82	67,574.3	\$12.31	0.0	\$0.00	0.0	\$0.00
Mixed Species	0.0	\$0.00	11.0	\$15.00	6,713.0	\$10.43	1,865.0	\$4.72	84,541.6	\$0.81
All Agencies All Spp.	26,292.3	\$131.77	503,943.0	\$30.59	1,176,179.8	\$27.50	7,560.0	\$3.34	84,541.6	\$0.81

AVERAGE SALE PRICES REPORTED BY AGENCY

MINNESOTA COUNTIES 2016

Agency Name: Aitkin Co.

Reporting Period: 01/15 to 12/16

Reporting Basis: Appraisal Reports

Species Name	Sawtimber		Pulp and Bolts		Pulpwood		Fuelwood		Biomass	
	MBF	Avg Price	Cords	Avg Price	Cords	Avg Price	Cords	Avg Price	Tons	Avg Price
Aspen (a)	0.0	\$0.00	19,562.0	\$39.73	14,397.0	\$17.16	0.0	\$0.00	0.0	\$0.00
Balm of Gilead	0.0	\$0.00	0.0	\$0.00	0.0	\$0.00	0.0	\$0.00	0.0	\$0.00
Birch Species	9.5	\$86.84	1,777.0	\$14.42	0.0	\$0.00	0.0	\$0.00	0.0	\$0.00
Ash Species	0.0	\$0.00	1,204.0	\$11.44	0.0	\$0.00	17.0	\$8.00	0.0	\$0.00
Elm Species	0.0	\$0.00	0.0	\$0.00	0.0	\$0.00	0.0	\$0.00	0.0	\$0.00
Oak Species	245.5	\$162.41	3,026.0	\$19.72	791.0	\$9.74	0.0	\$0.00	0.0	\$0.00
Basswood	96.0	\$70.01	1,631.0	\$13.03	12.0	\$8.00	0.0	\$0.00	0.0	\$0.00
Mixed/Other Hdwds	0.0	\$0.00	9,674.0	\$16.31	0.0	\$0.00	0.0	\$0.00	0.0	\$0.00
Balsam fir	0.0	\$0.00	1,041.0	\$36.53	219.0	\$15.19	0.0	\$0.00	0.0	\$0.00
White Spruce	0.0	\$0.00	629.0	\$30.73	155.0	\$4.00	0.0	\$0.00	0.0	\$0.00
Black Spruce	0.0	\$0.00	0.0	\$0.00	710.0	\$13.01	0.0	\$0.00	0.0	\$0.00
Tamarack	0.0	\$0.00	0.0	\$0.00	830.0	\$6.27	13.0	\$8.00	0.0	\$0.00
White Cedar	0.0	\$0.00	0.0	\$0.00	0.0	\$0.00	0.0	\$0.00	0.0	\$0.00
Jack Pine	0.0	\$0.00	0.0	\$0.00	0.0	\$0.00	0.0	\$0.00	0.0	\$0.00
Red Pine	0.0	\$0.00	1,380.5	\$29.05	1,360.0	\$11.47	0.0	\$0.00	0.0	\$0.00
White Pine	0.0	\$0.00	2.0	\$50.00	0.0	\$0.00	0.0	\$0.00	0.0	\$0.00
Maple Species	0.0	\$0.00	0.0	\$0.00	5,270.0	\$12.43	0.0	\$0.00	0.0	\$0.00
Mixed Species	0.0	\$0.00	0.0	\$0.00	757.0	\$4.74	0.0	\$0.00	0.0	\$0.00
Aitkin Co. All Species	351.0	\$135.09	39,926.5	\$28.87	24,501.0	\$14.61	30.0	\$8.00	0.0	\$0.00

a) Includes 13,159 cords aspen pulpwood salvage sold at \$15.49 per cord.

Agency Name: Becker Co.

Reporting Period: 01/16 to 12/16

Reporting Basis: Appraisal Reports

Species Name	Sawtimber		Pulp and Bolts		Pulpwood		Fuelwood		Biomass	
	MBF	Avg Price	Cords	Avg Price	Cords	Avg Price	Cords	Avg Price	Tons	Avg Price
Aspen	0.0	\$0.00	0.0	\$0.00	7,620.0	\$44.17	0.0	\$0.00	0.0	\$0.00
Balm of Gilead	0.0	\$0.00	0.0	\$0.00	0.0	\$0.00	0.0	\$0.00	0.0	\$0.00
Birch Species	0.0	\$0.00	730.0	\$20.82	0.0	\$0.00	0.0	\$0.00	0.0	\$0.00
Ash Species	0.0	\$0.00	0.0	\$0.00	0.0	\$0.00	0.0	\$0.00	0.0	\$0.00
Elm Species	0.0	\$0.00	0.0	\$0.00	10.0	\$6.10	0.0	\$0.00	0.0	\$0.00
Oak Species	0.0	\$0.00	109.0	\$24.12	0.0	\$0.00	0.0	\$0.00	0.0	\$0.00
Basswood	0.0	\$0.00	120.0	\$13.68	0.0	\$0.00	0.0	\$0.00	0.0	\$0.00
Mixed/Other Hdws	0.0	\$0.00	0.0	\$0.00	10.0	\$9.90	0.0	\$0.00	0.0	\$0.00
Balsam fir	0.0	\$0.00	0.0	\$0.00	195.0	\$14.12	0.0	\$0.00	0.0	\$0.00
White Spruce	0.0	\$0.00	0.0	\$0.00	115.0	\$17.08	0.0	\$0.00	0.0	\$0.00
Black Spruce	0.0	\$0.00	0.0	\$0.00	0.0	\$0.00	0.0	\$0.00	0.0	\$0.00
Tamarack	0.0	\$0.00	0.0	\$0.00	55.0	\$7.36	0.0	\$0.00	0.0	\$0.00
White Cedar	0.0	\$0.00	0.0	\$0.00	0.0	\$0.00	0.0	\$0.00	0.0	\$0.00
Jack Pine	0.0	\$0.00	775.0	\$24.92	0.0	\$0.00	0.0	\$0.00	0.0	\$0.00
Red Pine	0.0	\$0.00	0.0	\$0.00	330.0	\$12.00	0.0	\$0.00	0.0	\$0.00
White Pine	0.0	\$0.00	0.0	\$0.00	0.0	\$0.00	0.0	\$0.00	0.0	\$0.00
Maple Species	0.0	\$0.00	0.0	\$0.00	5.0	\$15.20	0.0	\$0.00	0.0	\$0.00
Mixed Species	0.0	\$0.00	0.0	\$0.00	0.0	\$0.00	0.0	\$0.00	0.0	\$0.00
Becker Co. All Species	0.0	\$0.00	1,734.0	\$22.37	8,340.0	\$41.48	0.0	\$0.00	0.0	\$0.00

Agency Name: Beltrami Co.

Reporting Period: 01/16 to 12/16

Reporting Basis: Appraisal Reports

Species Name	Sawtimber		Pulp and Bolts		Pulpwood		Fuelwood		Biomass	
	MBF	Avg Price	Cords	Avg Price	Cords	Avg Price	Cords	Avg Price	Tons	Avg Price
Aspen	0.0	\$0.00	12,526.0	\$55.53	0.0	\$0.00	0.0	\$0.00	0.0	\$0.00
Balm of Gilead	0.0	\$0.00	765.0	\$66.80	0.0	\$0.00	0.0	\$0.00	0.0	\$0.00
Birch Species	0.0	\$0.00	147.0	\$22.70	1,600.0	\$19.00	0.0	\$0.00	0.0	\$0.00
Ash Species	0.0	\$0.00	497.0	\$16.79	427.0	\$12.09	0.0	\$0.00	0.0	\$0.00
Elm Species	0.0	\$0.00	0.0	\$0.00	0.0	\$0.00	0.0	\$0.00	0.0	\$0.00
Oak Species	0.0	\$0.00	478.0	\$17.92	278.0	\$11.66	0.0	\$0.00	0.0	\$0.00
Basswood	0.0	\$0.00	1,193.0	\$24.56	356.0	\$14.83	0.0	\$0.00	0.0	\$0.00
Mixed/Other Hdwds	0.0	\$0.00	0.0	\$0.00	280.0	\$13.45	0.0	\$0.00	0.0	\$0.00
Balsam fir	0.0	\$0.00	890.0	\$23.25	2,009.5	\$18.51	0.0	\$0.00	0.0	\$0.00
White Spruce	0.0	\$0.00	0.0	\$0.00	261.0	\$22.54	0.0	\$0.00	0.0	\$0.00
Black Spruce	0.0	\$0.00	0.0	\$0.00	841.0	\$15.82	0.0	\$0.00	0.0	\$0.00
Tamarack	0.0	\$0.00	0.0	\$0.00	1,787.0	\$8.50	271.0	\$4.00	0.0	\$0.00
White Cedar	0.0	\$0.00	0.0	\$0.00	10.0	\$10.00	0.0	\$0.00	0.0	\$0.00
Jack Pine	0.0	\$0.00	735.0	\$36.93	1,191.0	\$22.29	0.0	\$0.00	0.0	\$0.00
Red Pine	323.5	\$253.34	3,070.0	\$58.30	233.0	\$10.95	0.0	\$0.00	0.0	\$0.00
White Pine	5.5	\$155.82	0.0	\$0.00	0.0	\$0.00	0.0	\$0.00	0.0	\$0.00
Maple Species	0.0	\$0.00	0.0	\$0.00	879.0	\$15.23	0.0	\$0.00	0.0	\$0.00
Mixed Species	0.0	\$0.00	0.0	\$0.00	2.0	\$7.50	0.0	\$0.00	0.0	\$0.00
Beltrami Co. All Species	329.0	\$251.71	20,301.0	\$50.40	10,154.5	\$15.96	271.0	\$4.00	0.0	\$0.00

Agency Name: Carlton Co.

Reporting Period:01/16 to 12/16

Reporting Basis: Appraisal Reports

Species Name	Sawtimber		Pulp and Bolts		Pulpwood		Fuelwood		Biomass	
	MBF	Avg Price	Cords	Avg Price	Cords	Avg Price	Cords	Avg Price	Tons	Avg Price
Aspen	0.0	\$0.00	0.0	\$0.00	9,420.0	\$39.80	0.0	\$0.00	0.0	\$0.00
Balm of Gilead	0.0	\$0.00	0.0	\$0.00	0.0	\$0.00	0.0	\$0.00	0.0	\$0.00
Birch Species	0.0	\$0.00	0.0	\$0.00	33.0	\$10.00	0.0	\$0.00	0.0	\$0.00
Ash Species	0.0	\$0.00	0.0	\$0.00	0.0	\$0.00	0.0	\$0.00	0.0	\$0.00
Elm Species	0.0	\$0.00	0.0	\$0.00	0.0	\$0.00	0.0	\$0.00	0.0	\$0.00
Oak Species	0.0	\$0.00	0.0	\$0.00	50.0	\$18.00	0.0	\$0.00	0.0	\$0.00
Basswood	0.0	\$0.00	0.0	\$0.00	0.0	\$0.00	0.0	\$0.00	0.0	\$0.00
Mixed/Other Hdws	0.0	\$0.00	3,999.0	\$17.88	0.0	\$0.00	0.0	\$0.00	0.0	\$0.00
Balsam fir	0.0	\$0.00	0.0	\$0.00	240.0	\$16.20	0.0	\$0.00	0.0	\$0.00
White Spruce	0.0	\$0.00	0.0	\$0.00	30.0	\$17.33	0.0	\$0.00	0.0	\$0.00
Black Spruce	0.0	\$0.00	0.0	\$0.00	0.0	\$0.00	0.0	\$0.00	0.0	\$0.00
Tamarack	0.0	\$0.00	0.0	\$0.00	0.0	\$0.00	0.0	\$0.00	0.0	\$0.00
White Cedar	0.0	\$0.00	0.0	\$0.00	0.0	\$0.00	0.0	\$0.00	0.0	\$0.00
Jack Pine	0.0	\$0.00	75.0	\$26.00	0.0	\$0.00	0.0	\$0.00	0.0	\$0.00
Red Pine	0.0	\$0.00	810.0	\$51.64	0.0	\$0.00	0.0	\$0.00	0.0	\$0.00
White Pine	0.0	\$0.00	0.0	\$0.00	0.0	\$0.00	0.0	\$0.00	0.0	\$0.00
Maple Species	0.0	\$0.00	0.0	\$0.00	0.0	\$0.00	0.0	\$0.00	0.0	\$0.00
Mixed Species	0.0	\$0.00	0.0	\$0.00	0.0	\$0.00	0.0	\$0.00	0.0	\$0.00
Carlton Co. All Species	0.0	\$0.00	4,884.0	\$23.60	9,773.0	\$38.94	0.0	\$0.00	0.0	\$0.00

Agency Name: Cass Co.

Reporting Period: 01/16 to 12/16

Reporting Basis: Appraisal Reports

Species Name	Sawtimber		Pulp and Bolts		Pulpwood		Fuelwood		Biomass	
	MBF	Avg Price	Cords	Avg Price	Cords	Avg Price	Cords	Avg Price	Tons	Avg Price
Aspen	0.0	\$0.00	0.0	\$0.00	27,344.0	\$37.25	0.0	\$0.00	0.0	\$0.00
Balm of Gilead	0.0	\$0.00	0.0	\$0.00	403.0	\$16.02	0.0	\$0.00	0.0	\$0.00
Birch Species	0.0	\$0.00	6,550.0	\$25.56	0.0	\$0.00	0.0	\$0.00	0.0	\$0.00
Ash Species	0.0	\$0.00	0.0	\$0.00	2,565.0	\$10.72	0.0	\$0.00	0.0	\$0.00
Elm Species	0.0	\$0.00	0.0	\$0.00	0.0	\$0.00	0.0	\$0.00	0.0	\$0.00
Oak Species	0.0	\$0.00	12,461.0	\$43.83	0.0	\$0.00	0.0	\$0.00	0.0	\$0.00
Basswood	0.0	\$0.00	4,038.0	\$20.23	0.0	\$0.00	0.0	\$0.00	0.0	\$0.00
Mixed/Other Hdwds	0.0	\$0.00	0.0	\$0.00	0.0	\$0.00	612.0	\$3.88	0.0	\$0.00
Balsam fir	0.0	\$0.00	0.0	\$0.00	974.0	\$18.35	0.0	\$0.00	0.0	\$0.00
White Spruce	0.0	\$0.00	5.0	\$28.00	0.0	\$0.00	0.0	\$0.00	0.0	\$0.00
Black Spruce	0.0	\$0.00	0.0	\$0.00	282.0	\$22.79	0.0	\$0.00	0.0	\$0.00
Tamarack	0.0	\$0.00	0.0	\$0.00	6.0	\$3.67	0.0	\$0.00	0.0	\$0.00
White Cedar	0.0	\$0.00	0.0	\$0.00	30.0	\$8.50	0.0	\$0.00	0.0	\$0.00
Jack Pine	0.0	\$0.00	509.0	\$27.28	52.0	\$20.88	0.0	\$0.00	0.0	\$0.00
Red Pine	493.0	\$113.09	1,218.0	\$24.11	29.0	\$13.48	0.0	\$0.00	0.0	\$0.00
White Pine	397.4	\$105.12	5.0	\$30.00	0.0	\$0.00	0.0	\$0.00	0.0	\$0.00
Maple Species	0.0	\$0.00	4,677.0	\$21.17	0.0	\$0.00	0.0	\$0.00	0.0	\$0.00
Mixed Species	0.0	\$0.00	11.0	\$15.00	0.0	\$0.00	0.0	\$0.00	0.0	\$0.00
Cass Co. All Species	890.4	\$109.53	29,474.0	\$31.82	31,685.0	\$34.04	612.0	\$3.88	0.0	\$0.00

Agency Name: Clearwater Co.

Reporting Period: 01/16 to 12/16

Reporting Basis: Appraisal Reports

Species Name	Sawtimber		Pulp and Bolts		Pulpwood		Fuelwood		Biomass	
	MBF	Avg Price	Cords	Avg Price	Cords	Avg Price	Cords	Avg Price	Tons	Avg Price
Aspen	0.0	\$0.00	0.0	\$0.00	7,287.0	\$36.93	0.0	\$0.00	0.0	\$0.00
Balm of Gilead	0.0	\$0.00	0.0	\$0.00	10.0	\$17.00	0.0	\$0.00	0.0	\$0.00
Birch Species	0.0	\$0.00	1,269.0	\$18.70	0.0	\$0.00	0.0	\$0.00	0.0	\$0.00
Ash Species	18.3	\$42.02	0.0	\$0.00	98.0	\$9.66	0.0	\$0.00	0.0	\$0.00
Elm Species	0.0	\$0.00	0.0	\$0.00	0.0	\$0.00	0.0	\$0.00	0.0	\$0.00
Oak Species	151.8	\$104.57	1,022.0	\$26.78	0.0	\$0.00	0.0	\$0.00	0.0	\$0.00
Basswood	139.3	\$85.51	0.0	\$0.00	827.0	\$11.80	0.0	\$0.00	0.0	\$0.00
Mixed/Other Hdws	0.0	\$0.00	593.0	\$17.15	0.0	\$0.00	0.0	\$0.00	0.0	\$0.00
Balsam fir	0.0	\$0.00	0.0	\$0.00	969.0	\$6.40	0.0	\$0.00	0.0	\$0.00
White Spruce	22.8	\$78.25	0.0	\$0.00	237.0	\$10.56	0.0	\$0.00	0.0	\$0.00
Black Spruce	0.0	\$0.00	0.0	\$0.00	0.0	\$0.00	0.0	\$0.00	0.0	\$0.00
Tamarack	0.0	\$0.00	0.0	\$0.00	612.0	\$6.00	0.0	\$0.00	0.0	\$0.00
White Cedar	0.0	\$0.00	0.0	\$0.00	0.0	\$0.00	0.0	\$0.00	0.0	\$0.00
Jack Pine	0.0	\$0.00	0.0	\$0.00	1,299.0	\$9.51	0.0	\$0.00	0.0	\$0.00
Red Pine	106.2	\$100.00	0.0	\$0.00	500.0	\$9.88	0.0	\$0.00	0.0	\$0.00
White Pine	0.0	\$0.00	0.0	\$0.00	0.0	\$0.00	0.0	\$0.00	0.0	\$0.00
Maple Species	22.9	\$95.02	0.0	\$0.00	958.0	\$13.98	0.0	\$0.00	0.0	\$0.00
Mixed Species	0.0	\$0.00	0.0	\$0.00	0.0	\$0.00	10.0	\$4.00	0.0	\$0.00
Clearwater Co. All Spp.	461.3	\$93.51	2,884.0	\$21.24	12,797.0	\$25.24	10.0	\$4.00	0.0	\$0.00

Agency Name: Crow Wing Co.

Reporting Period: 01/16 to 12/16

Reporting Basis: Appraisal Reports

Species Name	Sawtimber		Pulp and Bolts		Pulpwood		Fuelwood		Biomass	
	MBF	Avg Price	Cords	Avg Price	Cords	Avg Price	Cords	Avg Price	Tons	Avg Price
Aspen	0.0	\$0.00	0.0	\$0.00	13,778.0	\$28.14	0.0	\$0.00	0.0	\$0.00
Balm of Gilead	0.0	\$0.00	0.0	\$0.00	0.0	\$0.00	0.0	\$0.00	0.0	\$0.00
Birch Species	0.0	\$0.00	2,939.0	\$14.40	0.0	\$0.00	0.0	\$0.00	0.0	\$0.00
Ash Species	0.0	\$0.00	70.0	\$12.00	675.0	\$11.62	0.0	\$0.00	0.0	\$0.00
Elm Species	0.0	\$0.00	0.0	\$0.00	0.0	\$0.00	0.0	\$0.00	0.0	\$0.00
Oak Species	0.0	\$0.00	6,219.0	\$16.19	0.0	\$0.00	0.0	\$0.00	0.0	\$0.00
Basswood	0.0	\$0.00	1,455.0	\$13.45	0.0	\$0.00	0.0	\$0.00	0.0	\$0.00
Mixed/Other Hdwds	0.0	\$0.00	0.0	\$0.00	247.0	\$15.00	0.0	\$0.00	0.0	\$0.00
Balsam fir	0.0	\$0.00	0.0	\$0.00	83.0	\$14.71	0.0	\$0.00	0.0	\$0.00
White Spruce	0.0	\$0.00	0.0	\$0.00	0.0	\$0.00	0.0	\$0.00	0.0	\$0.00
Black Spruce	0.0	\$0.00	0.0	\$0.00	0.0	\$0.00	0.0	\$0.00	0.0	\$0.00
Tamarack	0.0	\$0.00	0.0	\$0.00	250.0	\$8.00	0.0	\$0.00	0.0	\$0.00
White Cedar	0.0	\$0.00	0.0	\$0.00	0.0	\$0.00	0.0	\$0.00	0.0	\$0.00
Jack Pine	0.0	\$0.00	216.0	\$26.94	0.0	\$0.00	0.0	\$0.00	0.0	\$0.00
Red Pine	0.0	\$0.00	390.0	\$18.67	517.0	\$12.15	0.0	\$0.00	0.0	\$0.00
White Pine	0.0	\$0.00	90.0	\$25.00	0.0	\$0.00	0.0	\$0.00	0.0	\$0.00
Maple Species	0.0	\$0.00	0.0	\$0.00	2,537.0	\$10.22	0.0	\$0.00	0.0	\$0.00
Mixed Species	0.0	\$0.00	0.0	\$0.00	0.0	\$0.00	0.0	\$0.00	2,845.0	\$1.00
Crow Wing Co. All Spp.	0.0	\$0.00	11,379.0	\$15.71	18,087.0	\$24.03	0.0	\$0.00	2,845.0	\$1.00

Agency Name: Hubbard Co.

Reporting Period: 01/16 to 12/16

Reporting Basis: Appraisal Reports

Species Name	Sawtimber		Pulp and Bolts		Pulpwood		Fuelwood		Biomass	
	MBF	Avg Price	Cords	Avg Price	Cords	Avg Price	Cords	Avg Price	Tons	Avg Price
Aspen	0.0	\$0.00	19,268.0	\$49.16	8,142.0	\$44.35	0.0	\$0.00	0.0	\$0.00
Balm of Gilead	0.0	\$0.00	0.0	\$0.00	6.0	\$7.33	0.0	\$0.00	0.0	\$0.00
Birch Species	0.0	\$0.00	1,275.0	\$18.88	3,526.0	\$16.25	0.0	\$0.00	0.0	\$0.00
Ash Species	0.0	\$0.00	20.0	\$7.15	80.0	\$6.51	0.0	\$0.00	0.0	\$0.00
Elm Species	0.0	\$0.00	0.0	\$0.00	0.0	\$0.00	0.0	\$0.00	0.0	\$0.00
Oak Species	0.0	\$0.00	1,290.0	\$31.02	563.0	\$29.20	0.0	\$0.00	0.0	\$0.00
Basswood	0.0	\$0.00	475.0	\$13.97	460.0	\$12.36	0.0	\$0.00	0.0	\$0.00
Mixed/Other Hdwds	0.0	\$0.00	0.0	\$0.00	801.0	\$6.84	0.0	\$0.00	0.0	\$0.00
Balsam fir	0.0	\$0.00	579.0	\$13.36	21.0	\$6.33	0.0	\$0.00	0.0	\$0.00
White Spruce	10.0	\$121.00	206.0	\$33.36	0.0	\$0.00	0.0	\$0.00	0.0	\$0.00
Black Spruce	0.0	\$0.00	0.0	\$0.00	10.0	\$6.00	0.0	\$0.00	0.0	\$0.00
Tamarack	0.0	\$0.00	0.0	\$0.00	0.0	\$0.00	0.0	\$0.00	0.0	\$0.00
White Cedar	0.0	\$0.00	5.0	\$10.00	0.0	\$0.00	0.0	\$0.00	0.0	\$0.00
Jack Pine	0.0	\$0.00	1,526.0	\$50.46	727.0	\$19.50	0.0	\$0.00	0.0	\$0.00
Red Pine	803.7	\$172.47	2,010.0	\$48.86	1,639.0	\$19.49	0.0	\$0.00	0.0	\$0.00
White Pine	0.0	\$0.00	0.0	\$0.00	0.0	\$0.00	0.0	\$0.00	0.0	\$0.00
Maple Species	0.0	\$0.00	0.0	\$0.00	926.0	\$7.84	0.0	\$0.00	0.0	\$0.00
Mixed Species	0.0	\$0.00	0.0	\$0.00	0.0	\$0.00	0.0	\$0.00	5,271.0	\$1.00
Hubbard Co. All Spp.	813.7	\$171.84	26,654.0	\$45.32	16,901.0	\$29.59	0.0	\$0.00	5,271.0	\$1.00

Agency Name: Itasca Co.

Reporting Period: 01/16 to 12/16

Reporting Basis: Appraisal Reports

Species Name	Sawtimber		Pulp and Bolts		Pulpwood		Fuelwood		Biomass	
	MBF	Avg Price	Cords	Avg Price	Cords	Avg Price	Cords	Avg Price	Tons	Avg Price
Aspen	0.0	\$0.00	0.0	\$0.00	45,100.0	\$36.14	0.0	\$0.00	0.0	\$0.00
Balm of Gilead	0.0	\$0.00	0.0	\$0.00	508.0	\$22.29	0.0	\$0.00	0.0	\$0.00
Birch Species	0.0	\$0.00	7,378.0	\$17.47	0.0	\$0.00	0.0	\$0.00	0.0	\$0.00
Ash Species	0.0	\$0.00	1,853.0	\$13.24	0.0	\$0.00	0.0	\$0.00	0.0	\$0.00
Elm Species	0.0	\$0.00	0.0	\$0.00	0.0	\$0.00	0.0	\$0.00	0.0	\$0.00
Oak Species	0.0	\$0.00	624.0	\$30.76	0.0	\$0.00	0.0	\$0.00	0.0	\$0.00
Basswood	0.0	\$0.00	1,294.0	\$12.83	0.0	\$0.00	0.0	\$0.00	0.0	\$0.00
Mixed/Other Hdws	0.0	\$0.00	0.0	\$0.00	0.0	\$0.00	0.0	\$0.00	0.0	\$0.00
Balsam fir	0.0	\$0.00	7,487.0	\$23.76	0.0	\$0.00	0.0	\$0.00	0.0	\$0.00
White Spruce	0.0	\$0.00	5,258.0	\$25.51	0.0	\$0.00	0.0	\$0.00	0.0	\$0.00
Black Spruce	0.0	\$0.00	0.0	\$0.00	5,668.0	\$29.19	0.0	\$0.00	0.0	\$0.00
Tamarack	0.0	\$0.00	0.0	\$0.00	2,268.0	\$5.98	0.0	\$0.00	0.0	\$0.00
White Cedar	0.0	\$0.00	0.0	\$0.00	0.0	\$0.00	0.0	\$0.00	0.0	\$0.00
Jack Pine	0.0	\$0.00	4,457.0	\$36.47	0.0	\$0.00	0.0	\$0.00	0.0	\$0.00
Red Pine	0.0	\$0.00	13,106.0	\$43.98	0.0	\$0.00	0.0	\$0.00	0.0	\$0.00
White Pine	0.0	\$0.00	351.0	\$48.23	0.0	\$0.00	0.0	\$0.00	0.0	\$0.00
Maple Species	0.0	\$0.00	0.0	\$0.00	4,436.0	\$13.17	0.0	\$0.00	0.0	\$0.00
Mixed Species	0.0	\$0.00	0.0	\$0.00	0.0	\$0.00	0.0	\$0.00	0.0	\$0.00
Itasca Co. All Spp.	0.0	\$0.00	41,808.0	\$30.07	57,980.0	\$32.40	0.0	\$0.00	0.0	\$0.00

Agency Name: Koochiching Co.

Reporting Period: 01/16 to 12/16

Reporting Basis: Appraisal Reports

Species Name	Sawtimber		Pulp and Bolts		Pulpwood		Fuelwood		Biomass	
	MBF	Avg Price	Cords	Avg Price	Cords	Avg Price	Cords	Avg Price	Tons	Avg Price
Aspen	0.0	\$0.00	0.0	\$0.00	59,064.0	\$41.15	0.0	\$0.00	0.0	\$0.00
Balm of Gilead	0.0	\$0.00	0.0	\$0.00	2,800.0	\$35.59	0.0	\$0.00	0.0	\$0.00
Birch Species	0.0	\$0.00	0.0	\$0.00	3,992.0	\$6.23	0.0	\$0.00	0.0	\$0.00
Ash Species	0.0	\$0.00	0.0	\$0.00	5,250.0	\$9.07	30.0	\$5.67	0.0	\$0.00
Elm Species	0.0	\$0.00	0.0	\$0.00	0.0	\$0.00	0.0	\$0.00	0.0	\$0.00
Oak Species	0.0	\$0.00	0.0	\$0.00	0.0	\$0.00	0.0	\$0.00	0.0	\$0.00
Basswood	0.0	\$0.00	0.0	\$0.00	818.0	\$5.80	0.0	\$0.00	0.0	\$0.00
Mixed/Other Hdws	0.0	\$0.00	0.0	\$0.00	0.0	\$0.00	0.0	\$0.00	0.0	\$0.00
Balsam fir	0.0	\$0.00	0.0	\$0.00	8,417.0	\$13.25	0.0	\$0.00	0.0	\$0.00
White Spruce	0.0	\$0.00	0.0	\$0.00	0.0	\$0.00	0.0	\$0.00	0.0	\$0.00
Black Spruce	0.0	\$0.00	0.0	\$0.00	15,390.0	\$29.51	0.0	\$0.00	0.0	\$0.00
Tamarack	0.0	\$0.00	0.0	\$0.00	2,941.0	\$5.77	0.0	\$0.00	0.0	\$0.00
White Cedar	0.0	\$0.00	0.0	\$0.00	423.0	\$4.63	0.0	\$0.00	0.0	\$0.00
Jack Pine	0.0	\$0.00	3,067.0	\$49.39	0.0	\$0.00	0.0	\$0.00	0.0	\$0.00
Red Pine	0.0	\$0.00	4,857.0	\$51.31	0.0	\$0.00	0.0	\$0.00	0.0	\$0.00
White Pine	0.0	\$0.00	0.0	\$0.00	0.0	\$0.00	0.0	\$0.00	0.0	\$0.00
Maple Species	0.0	\$0.00	0.0	\$0.00	360.0	\$6.96	0.0	\$0.00	0.0	\$0.00
Mixed Species	0.0	\$0.00	0.0	\$0.00	0.0	\$0.00	199.0	\$2.93	0.0	\$0.00
Koochiching Co. All Spp.	0.0	\$0.00	7,924.0	\$50.56	99,455.0	\$32.12	229.0	\$3.29	0.0	\$0.00

Agency Name: Lake Co.

Reporting Period: 01/16 to 12/16

Reporting Basis: Appraisal Reports

Species Name	Sawtimber		Pulp and Bolts		Pulpwood		Fuelwood		Biomass	
	MBF	Avg Price	Cords	Avg Price	Cords	Avg Price	Cords	Avg Price	Tons	Avg Price
Aspen	0.0	\$0.00	0.0	\$0.00	5,783.0	\$28.07	0.0	\$0.00	0.0	\$0.00
Balm of Gilead	0.0	\$0.00	0.0	\$0.00	249.0	\$8.84	0.0	\$0.00	0.0	\$0.00
Birch Species	0.0	\$0.00	4,434.0	\$15.74	0.0	\$0.00	0.0	\$0.00	0.0	\$0.00
Ash Species	0.0	\$0.00	918.0	\$8.87	0.0	\$0.00	0.0	\$0.00	0.0	\$0.00
Elm Species	0.0	\$0.00	0.0	\$0.00	0.0	\$0.00	0.0	\$0.00	0.0	\$0.00
Oak Species	0.0	\$0.00	3.0	\$13.33	12.0	\$6.58	0.0	\$0.00	0.0	\$0.00
Basswood	0.0	\$0.00	0.0	\$0.00	208.0	\$5.81	0.0	\$0.00	0.0	\$0.00
Mixed/Other Hdws	0.0	\$0.00	0.0	\$0.00	20.0	\$5.00	0.0	\$0.00	0.0	\$0.00
Balsam fir	0.0	\$0.00	0.0	\$0.00	2,429.0	\$8.00	0.0	\$0.00	0.0	\$0.00
White Spruce	0.0	\$0.00	2,589.0	\$26.82	0.0	\$0.00	0.0	\$0.00	0.0	\$0.00
Black Spruce	0.0	\$0.00	263.0	\$18.00	0.0	\$0.00	0.0	\$0.00	0.0	\$0.00
Tamarack	0.0	\$0.00	0.0	\$0.00	55.0	\$6.00	0.0	\$0.00	0.0	\$0.00
White Cedar	0.0	\$0.00	40.0	\$12.33	0.0	\$0.00	0.0	\$0.00	0.0	\$0.00
Jack Pine	0.0	\$0.00	60.0	\$32.50	0.0	\$0.00	0.0	\$0.00	0.0	\$0.00
Red Pine	0.0	\$0.00	83.0	\$38.00	0.0	\$0.00	0.0	\$0.00	0.0	\$0.00
White Pine	0.0	\$0.00	154.0	\$49.95	0.0	\$0.00	0.0	\$0.00	0.0	\$0.00
Maple Species	0.0	\$0.00	0.0	\$0.00	2,930.0	\$7.67	0.0	\$0.00	0.0	\$0.00
Mixed Species	0.0	\$0.00	0.0	\$0.00	0.0	\$0.00	28.0	\$3.54	0.0	\$0.00
Lake Co. All Spp.	0.0	\$0.00	8,544.0	\$19.36	11,686.0	\$17.81	28.0	\$3.54	0.0	\$0.00

Agency Name: Pine Co.

Reporting Period: 01/16 to 12/16

Reporting Basis: Appraisal Reports

Species Name	Sawtimber		Pulp and Bolts		Pulpwood		Fuelwood		Biomass	
	MBF	Avg Price	Cords	Avg Price	Cords	Avg Price	Cords	Avg Price	Tons	Avg Price
Aspen	0.0	\$0.00	0.0	\$0.00	4,366.0	\$82.90	0.0	\$0.00	0.0	\$0.00
Balm of Gilead	0.0	\$0.00	0.0	\$0.00	0.0	\$0.00	0.0	\$0.00	0.0	\$0.00
Birch Species	0.0	\$0.00	0.0	\$0.00	115.0	\$14.29	0.0	\$0.00	0.0	\$0.00
Ash Species	0.0	\$0.00	1,374.0	\$26.79	0.0	\$0.00	0.0	\$0.00	0.0	\$0.00
Elm Species	0.0	\$0.00	0.0	\$0.00	0.0	\$0.00	0.0	\$0.00	0.0	\$0.00
Oak Species	0.0	\$0.00	1,101.0	\$34.28	0.0	\$0.00	0.0	\$0.00	0.0	\$0.00
Basswood	0.0	\$0.00	0.0	\$0.00	15.0	\$6.53	0.0	\$0.00	0.0	\$0.00
Mixed/Other Hdws	0.0	\$0.00	0.0	\$0.00	203.0	\$13.62	0.0	\$0.00	0.0	\$0.00
Balsam fir	0.0	\$0.00	0.0	\$0.00	0.0	\$0.00	0.0	\$0.00	0.0	\$0.00
White Spruce	0.0	\$0.00	0.0	\$0.00	0.0	\$0.00	0.0	\$0.00	0.0	\$0.00
Black Spruce	0.0	\$0.00	0.0	\$0.00	0.0	\$0.00	0.0	\$0.00	0.0	\$0.00
Tamarack	0.0	\$0.00	0.0	\$0.00	0.0	\$0.00	0.0	\$0.00	0.0	\$0.00
White Cedar	0.0	\$0.00	0.0	\$0.00	0.0	\$0.00	0.0	\$0.00	0.0	\$0.00
Jack Pine	0.0	\$0.00	0.0	\$0.00	0.0	\$0.00	0.0	\$0.00	0.0	\$0.00
Red Pine	0.0	\$0.00	0.0	\$0.00	0.0	\$0.00	0.0	\$0.00	0.0	\$0.00
White Pine	0.0	\$0.00	0.0	\$0.00	0.0	\$0.00	0.0	\$0.00	0.0	\$0.00
Maple Species	0.0	\$0.00	0.0	\$0.00	49.0	\$13.76	0.0	\$0.00	0.0	\$0.00
Mixed Species	0.0	\$0.00	0.0	\$0.00	0.0	\$0.00	0.0	\$0.00	0.0	\$0.00
Pine Co. All Spp.	0.0	\$0.00	2,475.0	\$30.12	4,748.0	\$77.32	0.0	\$0.00	0.0	\$0.00

Agency Name: St. Louis Co.

Reporting Period: 01/16 to 12/16

Reporting Basis: Appraisal Reports

Species Name	Sawtimber		Pulp and Bolts		Pulpwood		Fuelwood		Biomass	
	MBF	Avg Price	Cords	Avg Price	Cords	Avg Price	Cords	Avg Price	Tons	Avg Price
Aspen	0.0	\$0.00	0.0	\$0.00	79,451.0	\$32.50	0.0	\$0.00	0.0	\$0.00
Balm of Gilead	0.0	\$0.00	0.0	\$0.00	1,272.0	\$28.95	0.0	\$0.00	0.0	\$0.00
Birch Species	0.0	\$0.00	0.0	\$0.00	20,989.0	\$18.66	0.0	\$0.00	0.0	\$0.00
Ash Species	0.0	\$0.00	0.0	\$0.00	4,047.0	\$6.18	0.0	\$0.00	0.0	\$0.00
Elm Species	0.0	\$0.00	0.0	\$0.00	17.0	\$6.18	0.0	\$0.00	0.0	\$0.00
Oak Species	0.0	\$0.00	0.0	\$0.00	0.0	\$0.00	0.0	\$0.00	0.0	\$0.00
Basswood	0.0	\$0.00	0.0	\$0.00	2,224.0	\$6.53	0.0	\$0.00	0.0	\$0.00
Mixed/Other Hdws	0.0	\$0.00	0.0	\$0.00	729.0	\$4.51	0.0	\$0.00	0.0	\$0.00
Balsam fir	0.0	\$0.00	0.0	\$0.00	14,956.0	\$18.34	0.0	\$0.00	0.0	\$0.00
White Spruce	0.0	\$0.00	0.0	\$0.00	4,812.0	\$23.56	0.0	\$0.00	0.0	\$0.00
Black Spruce	0.0	\$0.00	0.0	\$0.00	20,962.0	\$28.69	0.0	\$0.00	0.0	\$0.00
Tamarack	0.0	\$0.00	0.0	\$0.00	7,124.0	\$7.57	0.0	\$0.00	0.0	\$0.00
White Cedar	0.0	\$0.00	0.0	\$0.00	0.0	\$0.00	0.0	\$0.00	0.0	\$0.00
Jack Pine	0.0	\$0.00	5,656.0	\$23.05	0.0	\$0.00	0.0	\$0.00	0.0	\$0.00
Red Pine	0.0	\$0.00	8,089.0	\$33.05	0.0	\$0.00	0.0	\$0.00	0.0	\$0.00
White Pine	0.0	\$0.00	3,475.0	\$28.53	0.0	\$0.00	0.0	\$0.00	0.0	\$0.00
Maple Species	0.0	\$0.00	0.0	\$0.00	18,619.0	\$16.07	0.0	\$0.00	0.0	\$0.00
Mixed Species	0.0	\$0.00	0.0	\$0.00	0.0	\$0.00	0.0	\$0.00	0.0	\$0.00
St. Louis Co. All Spp.	0.0	\$0.00	17,220.0	\$28.85	175,202.0	\$25.09	0.0	\$0.00	0.0	\$0.00

MINNESOTA FEDERAL AGENCIES 2016

Agency Name: USDI – BIA

Reporting Period: 01/16 to 12/16

Reporting Basis: Scale Receipts

Species Name	Sawtimber		Pulp and Bolts		Pulpwood		Fuelwood		Biomass		
	MBF	Avg Price	Cords	Avg Price	Cords	Avg Price	Cords	Avg Price	Tons	Avg Price	
Aspen	0.0	\$0.00	0.0	\$0.00	20,498.1	\$25.90	0.0	\$0.00	0.0	\$0.00	
Balm of Gilead	0.0	\$0.00	0.0	\$0.00	4,045.6	\$16.61	0.0	\$0.00	0.0	\$0.00	
Birch Species	0.0	\$0.00	0.0	\$0.00	2,626.0	\$8.28	0.0	\$0.00	0.0	\$0.00	
Ash Species	0.0	\$0.00	19.2	\$18.39	375.1	\$8.24	0.0	\$0.00	0.0	\$0.00	
Elm Species	0.0	\$0.00	0.0	\$0.00	19.0	\$7.00	0.0	\$0.00	0.0	\$0.00	
Oak Species	1.7	\$80.00	35.4	\$19.52	0.0	\$0.00	15.5	\$4.77	0.0	\$0.00	
Basswood	0.0	\$0.00	0.0	\$0.00	42.0	\$10.81	0.0	\$0.00	0.0	\$0.00	
Mixed/Other Hdwds	0.0	\$0.00	0.0	\$0.00	27.4	\$4.78	113.0	\$5.21	0.0	\$0.00	
Balsam fir	0.0	\$0.00	126.3	\$12.99	2,247.0	\$12.49	0.0	\$0.00	0.0	\$0.00	
White Spruce	46.0	\$80.00	318.6	\$20.66	1,411.2	\$19.06	0.0	\$0.00	0.0	\$0.00	
Black Spruce	0.0	\$0.00	113.3	\$21.09	781.7	\$13.67	0.0	\$0.00	0.0	\$0.00	
Tamarack	0.0	\$0.00	0.0	\$0.00	95.3	\$5.54	69.3	\$4.18	0.0	\$0.00	
White Cedar	0.0	\$0.00	0.0	\$0.00	3,594.0	\$7.25	0.0	\$0.00	0.0	\$0.00	
Jack Pine	25.3	\$118.77	338.0	\$25.35	2,334.3	\$16.49	0.0	\$0.00	0.0	\$0.00	
Red Pine	405.1	\$113.62	1,607.4	\$28.45	1,626.5	\$20.26	0.0	\$0.00	0.0	\$0.00	
White Pine	339.3	\$128.14	0.0	\$0.00	480.4	\$29.47	0.0	\$0.00	0.0	\$0.00	
Maple Species	0.0	\$0.00	0.0	\$0.00	538.2	\$8.58	0.0	\$0.00	0.0	\$0.00	
Mixed Species	0.0	\$0.00	0.0	\$0.00	0.0	\$0.00	0.0	\$0.00	0.0	\$0.00	
USDI - BIA	All Spp.	817.4	\$117.85	2,558.2	\$25.78	40,741.8	\$19.78	197.8	\$4.82	0.0	\$0.00

Agency Name: Chippewa N.F.

Reporting Period: 10/15 to 09/16

Reporting Basis: Appraisal Reports

Species Name	Sawtimber		Pulp and Bolts		Pulpwood		Fuelwood		Biomass	
	MBF	Avg Price	Cords	Avg Price	Cords	Avg Price	Cords	Avg Price	Tons	Avg Price
Aspen	0.0	\$0.00	0.0	\$0.00	35,114.0	\$47.71	0.0	\$0.00	0.0	\$0.00
Balm of Gilead	0.0	\$0.00	0.0	\$0.00	0.0	\$0.00	0.0	\$0.00	0.0	\$0.00
Birch Species	0.0	\$0.00	0.0	\$0.00	0.0	\$0.00	0.0	\$0.00	0.0	\$0.00
Ash Species	0.0	\$0.00	0.0	\$0.00	0.0	\$0.00	0.0	\$0.00	0.0	\$0.00
Elm Species	0.0	\$0.00	0.0	\$0.00	0.0	\$0.00	0.0	\$0.00	0.0	\$0.00
Oak Species	0.0	\$0.00	0.0	\$0.00	0.0	\$0.00	0.0	\$0.00	0.0	\$0.00
Basswood	0.0	\$0.00	0.0	\$0.00	0.0	\$0.00	0.0	\$0.00	0.0	\$0.00
Mixed/Other Hdws	2,366.0	\$45.77	14,999.0	\$19.50	0.0	\$0.00	0.0	\$0.00	0.0	\$0.00
Balsam fir	0.0	\$0.00	2,429.0	\$28.75	0.0	\$0.00	0.0	\$0.00	0.0	\$0.00
White Spruce	437.0	\$71.69	2,242.0	\$30.43	0.0	\$0.00	0.0	\$0.00	0.0	\$0.00
Black Spruce	0.0	\$0.00	0.0	\$0.00	0.0	\$0.00	0.0	\$0.00	0.0	\$0.00
Tamarack	0.0	\$0.00	0.0	\$0.00	4.0	\$9.50	0.0	\$0.00	0.0	\$0.00
White Cedar	0.0	\$0.00	0.0	\$0.00	0.0	\$0.00	0.0	\$0.00	0.0	\$0.00
Jack Pine	0.0	\$0.00	0.0	\$0.00	0.0	\$0.00	0.0	\$0.00	0.0	\$0.00
Red Pine	8,446.0	\$156.35	11,896.0	\$34.88	0.0	\$0.00	0.0	\$0.00	0.0	\$0.00
White Pine	0.0	\$0.00	0.0	\$0.00	0.0	\$0.00	0.0	\$0.00	0.0	\$0.00
Maple Species	0.0	\$0.00	0.0	\$0.00	0.0	\$0.00	0.0	\$0.00	0.0	\$0.00
Mixed Species	0.0	\$0.00	0.0	\$0.00	0.0	\$0.00	1,374.0	\$4.05	12,369.0	\$0.24
Chippewa N.F. All Spp.	11,249.0	\$129.80	31,566.0	\$26.78	35,118.0	\$47.71	1,374.0	\$4.05	12,369.0	\$0.24

Agency Name: Superior N.F.

Reporting Period: 10/15 to 09/16

Reporting Basis: Appraisal Reports

Species Name	Sawtimber		Pulp and Bolts		Pulpwood		Fuelwood		Biomass	
	MBF	Avg Price	Cords	Avg Price	Cords	Avg Price	Cords	Avg Price	Tons	Avg Price
Aspen	0.0	\$0.00	0.0	\$0.00	29,852.0	\$21.80	0.0	\$0.00	0.0	\$0.00
Balm of Gilead	0.0	\$0.00	0.0	\$0.00	0.0	\$0.00	0.0	\$0.00	0.0	\$0.00
Birch Species	229.0	\$43.52	0.0	\$0.00	4,568.0	\$9.73	0.0	\$0.00	0.0	\$0.00
Ash Species	0.0	\$0.00	0.0	\$0.00	0.0	\$0.00	0.0	\$0.00	0.0	\$0.00
Elm Species	0.0	\$0.00	0.0	\$0.00	0.0	\$0.00	0.0	\$0.00	0.0	\$0.00
Oak Species	0.0	\$0.00	0.0	\$0.00	0.0	\$0.00	0.0	\$0.00	0.0	\$0.00
Basswood	0.0	\$0.00	0.0	\$0.00	0.0	\$0.00	0.0	\$0.00	0.0	\$0.00
Mixed/Other Hdwds	0.0	\$0.00	0.0	\$0.00	86.0	\$4.98	0.0	\$0.00	0.0	\$0.00
Balsam fir	0.0	\$0.00	0.0	\$0.00	5,574.0	\$5.60	0.0	\$0.00	0.0	\$0.00
White Spruce	0.0	\$0.00	2,270.0	\$26.74	6,368.0	\$13.52	0.0	\$0.00	0.0	\$0.00
Black Spruce	0.0	\$0.00	0.0	\$0.00	0.0	\$0.00	0.0	\$0.00	0.0	\$0.00
Tamarack	0.0	\$0.00	0.0	\$0.00	46.0	\$2.41	0.0	\$0.00	0.0	\$0.00
White Cedar	0.0	\$0.00	0.0	\$0.00	0.0	\$0.00	0.0	\$0.00	0.0	\$0.00
Jack Pine	0.0	\$0.00	4,344.0	\$22.51	38.0	\$6.82	0.0	\$0.00	0.0	\$0.00
Red Pine	8,441.0	\$106.94	0.0	\$0.00	11,170.0	\$9.83	0.0	\$0.00	0.0	\$0.00
White Pine	0.0	\$0.00	1,442.0	\$28.65	0.0	\$0.00	0.0	\$0.00	0.0	\$0.00
Maple Species	0.0	\$0.00	0.0	\$0.00	5,662.0	\$10.49	0.0	\$0.00	0.0	\$0.00
Mixed Species	0.0	\$0.00	0.0	\$0.00	0.0	\$0.00	254.0	\$9.92	8,804.0	\$0.36
Superior N.F. All Spp.	8,670.0	\$105.26	8,056.0	\$24.80	63,364.0	\$15.51	254.0	\$9.92	8,804.0	\$0.36

MINNESOTA DNR FORESTRY 2016

Agency Name: MnDNR Forestry

Reporting Period: 01/16 to 12/16

Reporting Basis: Appraisal Reports

Species Name	Sawtimber		Pulp and Bolts		Pulpwood		Fuelwood		Biomass	
	MBF	Avg Price	Cords	Avg Price	Cords	Avg Price	Cords	Avg Price	Tons	Avg Price
Aspen	0.0	\$0.00	14,532.0	\$44.27	402,151.4	\$33.18	0.0	\$0.00	0.0	\$0.00
Balm of Gilead	0.0	\$0.00	0.0	\$0.00	210.0	\$33.47	0.0	\$0.00	0.0	\$0.00
Birch Species	0.0	\$0.00	9,437.0	\$15.95	15,384.9	\$10.09	77.4	\$3.71	0.0	\$0.00
Ash Species	207.7	\$102.58	5,744.3	\$9.38	4,854.6	\$6.29	60.0	\$2.50	0.0	\$0.00
Elm Species	5.9	\$42.54	0.0	\$0.00	70.0	\$1.74	0.0	\$0.00	0.0	\$0.00
Oak Species	1,149.9	\$354.19	15,364.0	\$31.29	1,185.7	\$17.37	55.0	\$2.27	0.0	\$0.00
Basswood	15.9	\$98.36	9,829.0	\$15.90	691.5	\$6.99	0.0	\$0.00	0.0	\$0.00
Mixed/Other Hdwds	125.4	\$71.13	8,950.0	\$13.79	131.5	\$5.03	220.0	\$2.96	0.0	\$0.00
Balsam fir	0.0	\$0.00	10,509.0	\$24.21	28,319.8	\$15.78	65.0	\$4.46	0.0	\$0.00
White Spruce	1.5	\$42.67	39,789.0	\$27.83	4,766.0	\$15.79	427.0	\$5.10	0.0	\$0.00
Black Spruce	0.0	\$0.00	10,938.0	\$42.13	30,790.0	\$19.99	0.0	\$0.00	0.0	\$0.00
Tamarack	0.0	\$0.00	0.0	\$0.00	31,852.9	\$5.91	3,193.0	\$2.10	0.0	\$0.00
White Cedar	0.0	\$0.00	0.0	\$0.00	439.0	\$5.02	0.0	\$0.00	0.0	\$0.00
Jack Pine	0.0	\$0.00	13,790.0	\$37.11	2,762.0	\$9.58	451.8	\$2.70	0.0	\$0.00
Red Pine	1,042.2	\$111.65	73,520.0	\$36.04	1,056.1	\$9.56	5.0	\$2.40	0.0	\$0.00
White Pine	0.0	\$0.00	1,758.0	\$23.50	622.0	\$5.44	0.0	\$0.00	0.0	\$0.00
Maple Species	162.0	\$178.88	32,395.0	\$17.34	24,405.1	\$10.62	0.0	\$0.00	0.0	\$0.00
Mixed Species	0.0	\$0.00	0.0	\$0.00	5,954.0	\$11.15	0.0	\$0.00	55,252.6	\$0.99
MnDNR Forestry All Spp.	2,710.5	\$215.73	246,555.3	\$29.18	555,646.5	\$27.45	4,554.2	\$2.55	55,252.6	\$0.99