

CHAPTER 2

Land Ownership and Administration

St. Louis Moraines, Tamarack Lowlands, Nashwauk Uplands, and Littlefork-Vermilion Uplands Subsections

2.1 ... Land Ownership

<i>Table 2.1</i>	<i>North-4 Subsections Land Ownership</i>
<i>Chart 2.1 slm</i>	<i>St. Louis Moraines Land Ownership</i>
<i>Chart 2.1 tl</i>	<i>Tamarack Lowlands Land Ownership</i>
<i>Chart 2.1 nu</i>	<i>Nashwauk Uplands Land Ownership</i>
<i>Chart 2.1 lvu</i>	<i>Littlefork-Vermilion Uplands Land Ownership</i>
<i>Map 2.1</i>	<i>North-4 Subsections Land Ownership</i>
<i>Map 2.2</i>	<i>North-4 Subsections Management Units</i>

Graphics (i.e., Tables, Charts, and Maps) referring to all four subsections combined (St. Louis Moraines, Tamarack Lowlands, Nashwauk Uplands, and Littlefork-Vermilion Uplands) are indicated by a “North-4 Subsections” after the chart designation (e.g., Table 3.2 North-4 Subsections).

Graphics referring to the St. Louis Moraines Subsection *only* are indicated by a “slm” after each chart designation (e.g., Chart 3.2 slm).

Graphics referring to the Tamarack Lowlands Subsection *only* are indicated by a “tl” after each chart designation (e.g., Map 3.2 tl).

Graphics referring to the Nashwauk Uplands Subsection *only* are indicated by a “nu” after each chart designation (e.g., Map 3.2 nu).

Graphics referring to the Littlefork-Vermilion Uplands *only* are indicated by a “lvu” after each chart designation (e.g., Map 3.2 lvu).

Notes relating to this chapter:

Color maps may be viewed as PDF files on the St. Louis Moraines, Tamarack Lowlands, Nashwauk Uplands, and Littlefork-Vermilion Uplands Subsection Forest Resource Management Plan (SFRMP) Web site at:

http://www.dnr.state.mn.us/forestry/subsection/north_4subsections/assessment.html

Maps in this chapter depict information for an area within a “planning boundary.” This boundary is designed to closely approximate the subsection while capturing data summary and planning efficiencies by using survey or jurisdiction lines in some cases.

Printed documents will be available for review at the Minnesota DNR Grand Rapids Region Headquarters at 1201 E Hwy 2, Grand Rapids, Minnesota, and on compact disk by request to Lynn Sue Mizner at (218) 927-7511 or lynn.mizner@dnr.state.mn.us.

2.1 Land Ownership

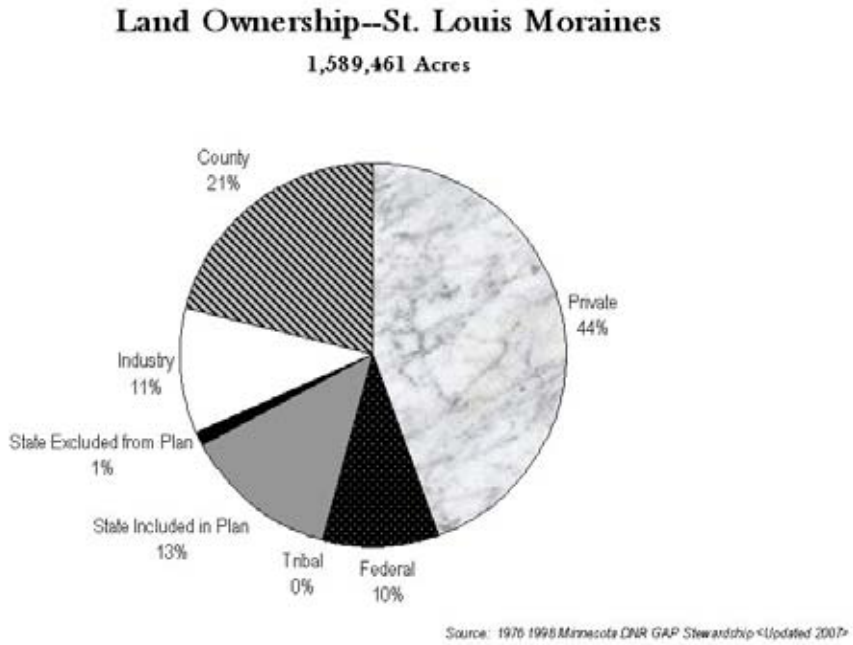
Table 2.1 North-4 Subsections Land Ownership¹

	St. Louis Moraines	Tamarack Lowlands	Nashwauk Uplands	Littlefork-Vermilion Uplands	Four Subsections Total
Private	704,410	641,424	264,277	418,426	2,028,537
Federal	157,413	12,477	92,401	39,126	301,417
Tribal	627	113	0	54,279	55,019
State Included in Plan ²	203,903	344,426	76,903	541,539	1,166,771
Forestry	196,010	293,776	76,864	540,704	1,107,354
Wildlife	7,813	47,096	39	835	55,783
Trails and Waterways	80	3,554	0	0	3,634
State Excluded from Plan	19,292	10,843	8,724	31,231	70,090
Industry	168,346	80,341	231,908	193,767	674,362
County	335,470	432,780	129,249	328,779	1,226,278
Total	1,589,461	1,522,404	803,462	1,607,147	5,522,474

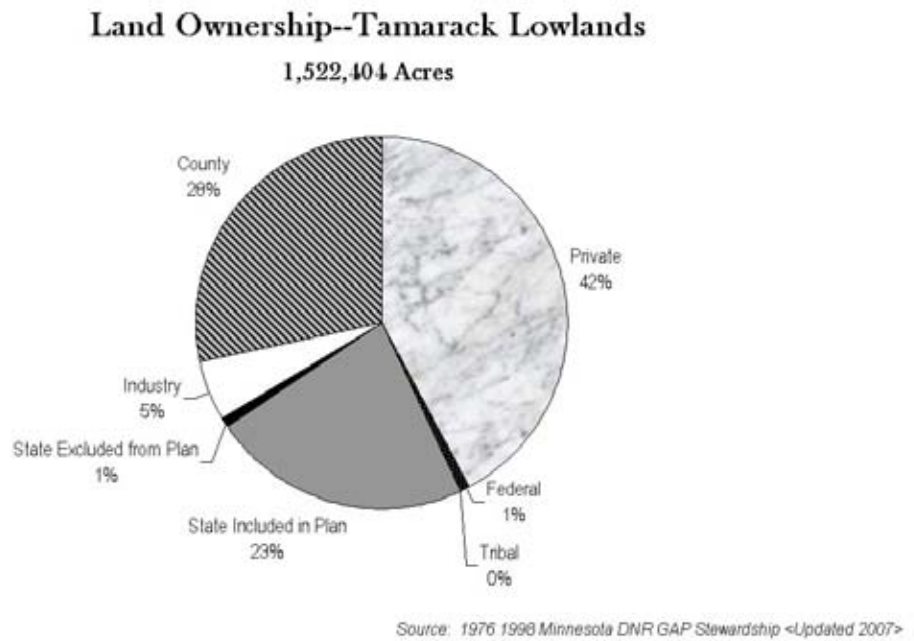
¹Source: 1976 to 1998 Minnesota DNR GAP Stewardship--"All Ownership Types" data.

²SFRMP only covers DNR Divisions of Forestry, Trails and Waterways, and Fish and Wildlife –Wildlife Section - administered lands.

Chart 2.1slm St. Louis Moraines Land Ownership



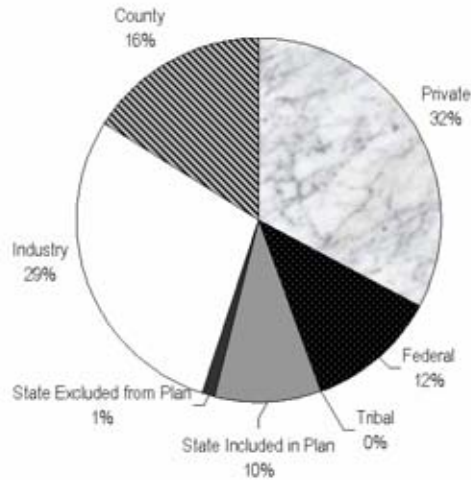
Map 2.1tl Tamarack Lowlands Land Ownership



Map 2.1nu Nashwauk Uplands Land Ownership

Land Ownership—Nashwauk Uplands

803,462 Acres

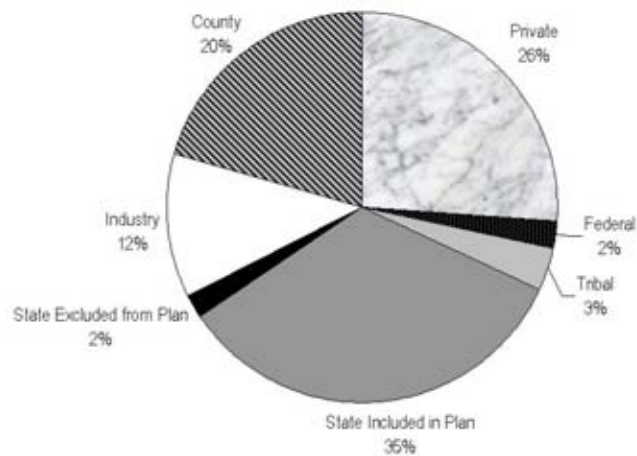


Source: 1976 1998 Minnesota DNR GAP Stewardship <Updated 2007>

Map 2.1lvu Littlefork-Vermilion Uplands Land Ownership

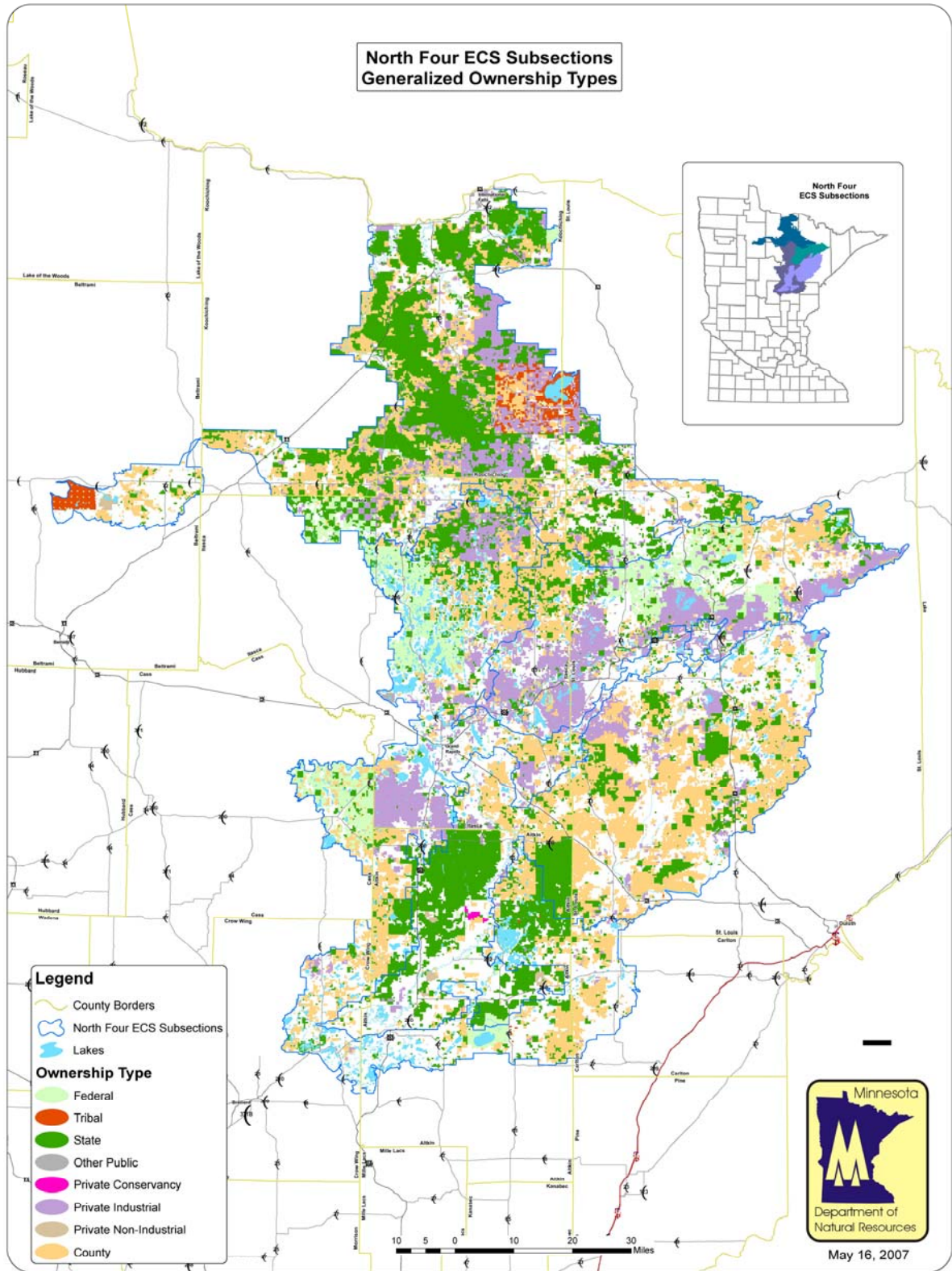
Land Ownership—Littlefork-Vermilion Uplands

1,607,147 Acres



Source: 1976 1998 Minnesota DNR GAP Stewardship

Map 2.1 North-4 Subsections – Land Ownership



Map 2.2 North-4 Subsections – Management Units

